

the basics

Within these pages are all the templates you'll need to create the projects from this month's magazine.

Some have been reduced in size – to get them back up to full measurements, simply use a photocopier to enlarge them by the amount indicated beside the template.

USE THESE MOTIFS TO GET STARTED RIGHT AWAY ON THE PROJECTS WITHIN SEW



DON'T MISS OUT,
GET ONLINE! VISIT
WWW.SEWMAG.CO.UK
FOR EXCLUSIVE READS
AND ALL THIS MONTH'S
TEMPLATES!



Fresh florals p30



Lovely lace p27



Cute as a bug p70

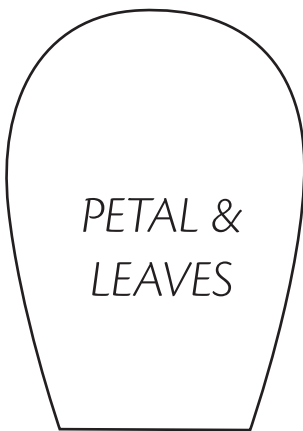


Frock star p67

fresh florals

Designer: Susie Johns
Page: 30

This vintage-style accessory set is created from soft velvet shapes and is easy to make. The template provided can be used to cut both the petals and leaves, making production quicker and easier. For a super-fast make you could even use a die-cutter to create the shapes!



One
template,
three ways



Be Prepared

Make sure to keep these sewing essentials in your stash for quick and easy use.

NEEDLES: A selection of hand and machine needles for use in a range of sizes.

PINS & PINCUSHION: A mixture of dressmaker's pins (long, thin sharps), glass top pins (mid-length, will not melt when pressed), and safety pins for securing templates and pattern pieces to fabric.

RULER: For measuring smaller items.

SCISSORS: Dressmaking (sharp, large blades for cutting fabric), pinking shears (sawtoothed blades used to neaten and secure the raw edges of fabric) and embroidery (small pointed blades for trimming threads).

SEAM RIPPER: A sharp-ended hook for pulling and undoing unwanted stitches, and opening buttonholes.

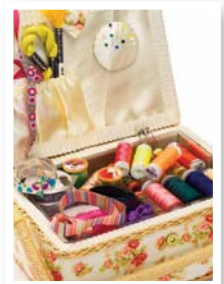
TAILOR'S CHALK: Removable chalks for marking patterns and templates onto fabric.

TAPE MEASURE: At least 150cm long for dressmaking.

THIMBLE: Protects fingertips from sharp needles.

THREADS: A variety of cotton, Nylon and silk threads for use in hand and machine stitching.

VANISHING PEN: For making precise marks on fabric and copying motifs neatly.



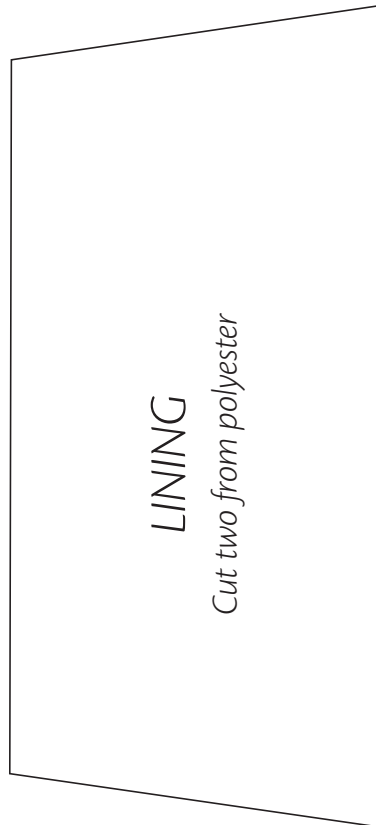
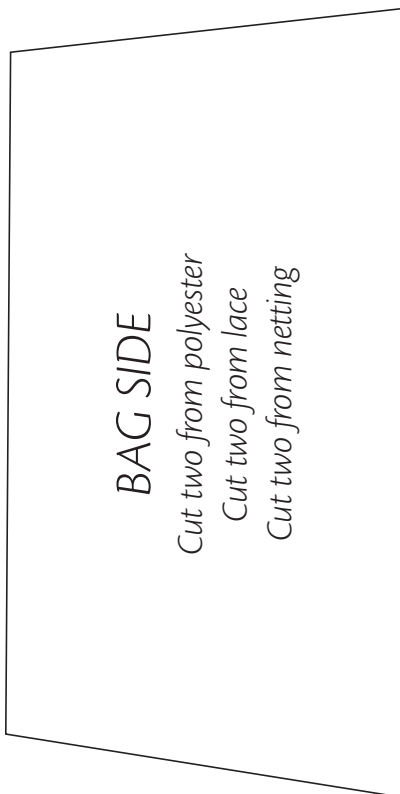
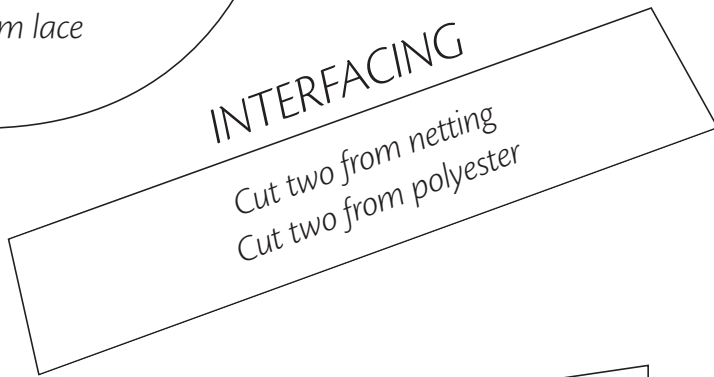
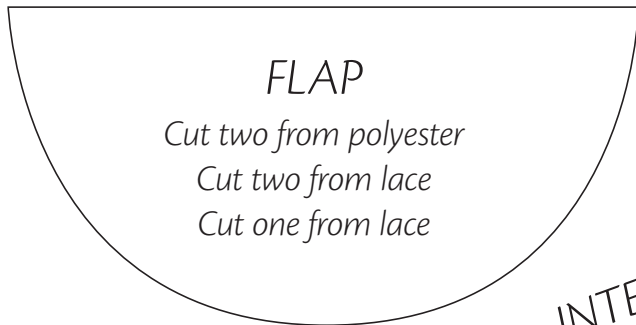


lovely lace

Use less than 1m of fabric!

Designer: Lisa Steed Davey
Page: 27 **Enlarge to** 333%

This bag features layers of lace, net and polyester to create a gorgeous coloured overlay finish. The netting is stiff and gives the bag shape and structure, whilst the embroidered lace lends it a pretty, designer look. Add beads or sequins to give the purse a little extra glam.



Must know fabric facts

Taking a critical look at the composition of a material will help you ascertain which techniques to use when creating your projects. Find the grain of your fabric with this handy guide.

WARP: The yarns that run the length of the fabric – stronger than weft yarns and less likely to stretch.

WEFT: These run over and under the warp threads, going across the fabric from selvedge to selvedge. As these yarns double back they fix the weave of the selvedge.

BIAS: This is the diagonal line running at a 45° angle to the warp and weft. Cutting pattern pieces on the bias allows them to stretch much easier.

SELVEDGE: The finished edge of woven fabrics.



Quick TIP

Fabric can be torn along the grain for a super-straight edge – this is often done in fabric shops, where the cutter will snip a small tear in the edge of the bolt then rip however much is needed from the roll quickly and neatly.

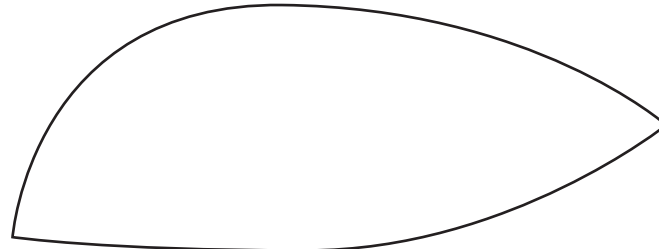
cute as a bug



Designer:
Lisa Steed Davey
Page: 70

These fun bug toys are assembled from colourful pieces of felt, layered together to create three different types of insect – a striped bug, a lady bug and a long winged bug. Combine different colours for a rainbow effect – you could even embroider small designs onto the wings for an extra special touch!

LONG
WINGED
BUG LEGS
Cut six



LONG WINGED
BUG WINGS
Cut two



*Make this
from your
stash!*

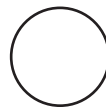
LADY
BUG WINGS
Cut one



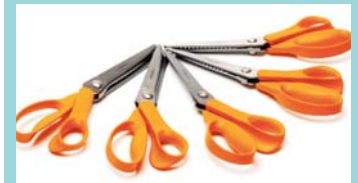
LADY
BUG LEGS
Cut six



LADY
BUG SPOTS
Cut six



Cutting EDGE



Follow these simple rules to ensure that you get neat results and accurate edges when cutting your fabric. This will help the pattern pieces to fit together well when it comes to sewing the project together.

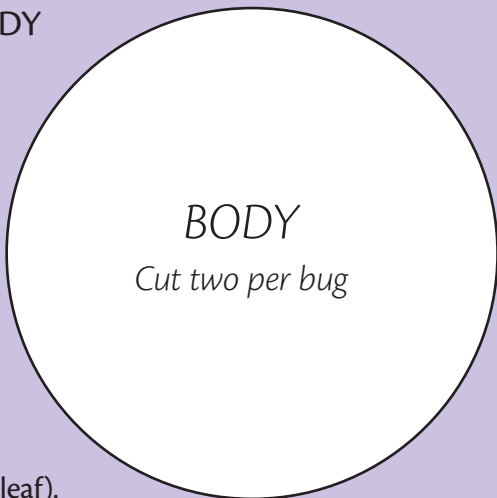
- Always cut on a smooth, flat surface, such as a table. Ensure that your scissors are sharp – and never use the same pair for cutting both fabric and paper. Use the full blade of the scissors for longer straight edges, making smaller cuts around curves.

- If you are right-handed, place your left hand onto the template and fabric and hold it securely. Holding the scissor blades at right angles to the fabric, begin cutting cleanly around each section. Reverse the process if you're left-handed.

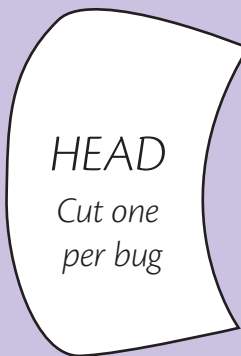
HEAD AND BODY TEMPLATES

Cut two body pieces for each of the three bugs; cut one head piece for both the Long Winged Bug and the Lady Bug. The Striped Bug has a separate head template (see overleaf).

BODY
Cut two per bug



HEAD
Cut one per bug



cute as a bug



STRIPED BUG LEGS

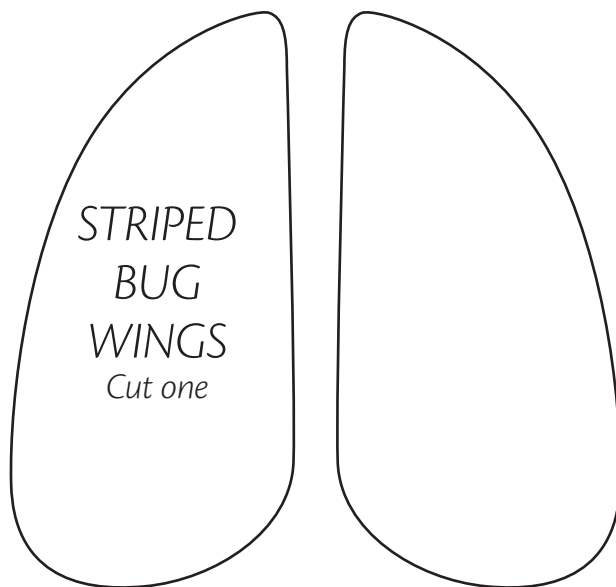
Cut six



Practise your
embroidery
techniques

STRIPED
BUG
WINGS

Cut one



STRIPED BUG
HEAD

Cut one



frock star

Designer: Louise Nichols

Page: 67

Enlarge to 166%

This gorgeous pinafore dress is perfect for the little lady in your life – created from soft calico it's comfy and cool but can be layered with T-shirts or cardigans to prepare for the autumn and winter ahead. A built-in pocket adds detail and allow for little hands to stow away small toys!

The bodice front and back are both cut using the same template – use the centre line indicated to cut the shortened back bodice piece.

Quick
dressmaking
project



Stitch Dictionary

Your templates and pattern pieces may feature the following markings – use this guide to get professional results every time.

Notches: These symbols help you accurately align seams. All pieces that require joining will have matching notches.

Written instructions: These indicate what the template is and how it should be used

Grain line: This double-pointed arrow dictates the placement of the template on the fabric – ensure that it lays parallel to the grain of the cloth.

Fold line: This arrow indicates the placement of a pattern piece along a fold. Make sure that it is pushed right up against the fold of the fabric.

GIRLS'
PINAFORE

