

Make these gorgeous garments with your **FREE** pattern!

bette collection

FEEL VIVACIOUS IN THESE TIMELESS PIECES

This month, the third instalment in your FREE SEW Pattern Collection allows you to create two fabulous dresses and separates that are guaranteed to impress!

Bette is a figure flattering collection of flirty frocks, stunning bodice and skirt that can be worked up in a variety of different fabrics to create your own individual style. We love the stand-out-from-the-crowd effect of bold polka dot cottons – but our full skirt version will look equally beautiful worked up in solid cottons or embroidered silks.

Once you have selected the garments you want to make first and have prepared the fabric and pattern pieces for your size as per the Sew Essentials page 8, you're ready to start stitching! Follow these step-by-step instructions to make your own vintage-style dresses!

Each of the pattern pieces has a 1.5cm seam allowance unless otherwise stated on the individual section. This means that once you have cut the tissue pattern pieces and pinned them to the fabric, you will cut them directly from the material - so you don't need to worry about adding additional borders to accommodate seams.



BETTE Dress A

BETTE Dress B



Make this dress for **£15!**



BETTE Top C



Embroidered satin makes this bodice elegant

BETTE Skirt D



Make this classic skirt stand out with bold shades



piece by piece

As always, the latest pattern in your collection is printed on dressmaker's tissue. Once you have taken it out of the envelope and opened it you will need to identify the pieces required for each garment. Use this chart to locate the pattern pieces for each garment before cutting.

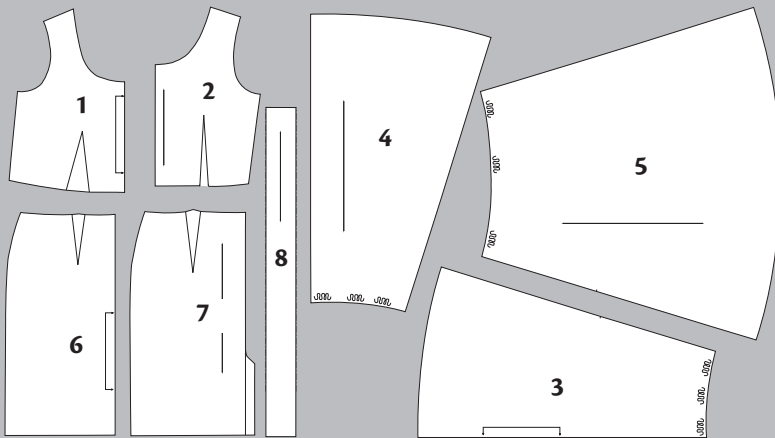
Prep & Pin

- 1 Once all the pattern pieces have been cut and laid onto the fabric as specified (see fabric layout guides), pin each one around the edges to secure it onto the material.
- 2 With dressmaking scissors cut all the pattern pieces from the fabric. Use careful clean cuts and work close to the edge of the tissue paper.
- 3 Once all pieces have been cut, leave the pattern pieces pinned in place until you're ready to work with them. This makes identifying each section easier.



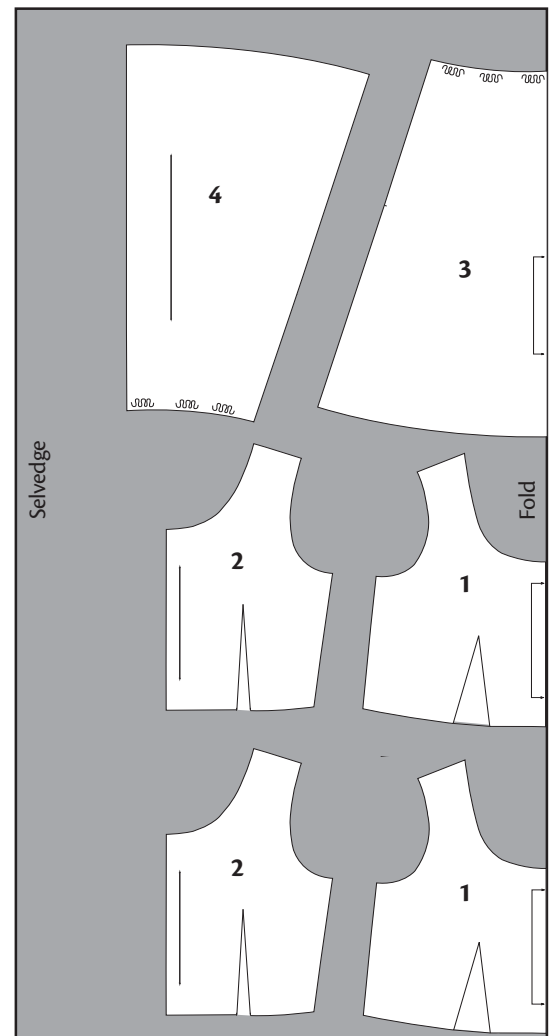
BETTE Dress A

IDENTIFYING PATTERN PIECES



- | | |
|------------------------------------|---|
| 1 FRONT BODICE, Dress A, B & Top C | 5 SIDE FULL SKIRT, Dress A |
| 2 BACK BODICE, Dress A, B & Top C | 6 FRONT STRAIGHT SKIRT, Dress B & Skirt D |
| 3 FRONT FULL SKIRT, Dress A | 7 BACK STRAIGHT SKIRT, Dress B & Skirt D |
| 4 BACK FULL SKIRT, Dress A | 8 WAISTBAND, Skirt D |

CUTTING LAYOUT



Dress A Fabric Width 150cm, you will need 2.4m

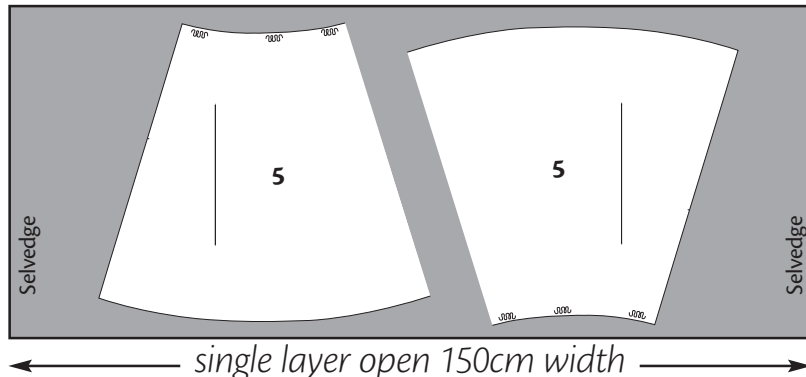
BETTE Dress A sewsupplies

- Printed cotton, 150cm x 2.4m
- Net, 3.5m
- Matching lining, 150cm x 50cm
- Concealed zip, 51cm

patternpieces

- 1 Front Bodice, cut two on fold (one becomes lining)
- 2 Back Bodice, cut two pairs (one becomes lining)
- 3 Front Full Skirt, cut one on fold
- 4 Back Full Skirt, cut one pair
- 5 Side Full Skirt, cut one pair

CUTTING LAYOUT





Make this with your **FREE** pattern!

IN ASSOCIATION WITH
ABAKHAN
 FABRICS, HOBBY & HOME
 www.abakhan.co.uk

BETTE Dress B

sewsupplies

150cm x 1.5m Floral linen
 Concealed zip, 51cm

patternpieces

1 Front Bodice, cut two on fold (one becomes lining)

2 Back Bodice, cut two pairs (one becomes lining)

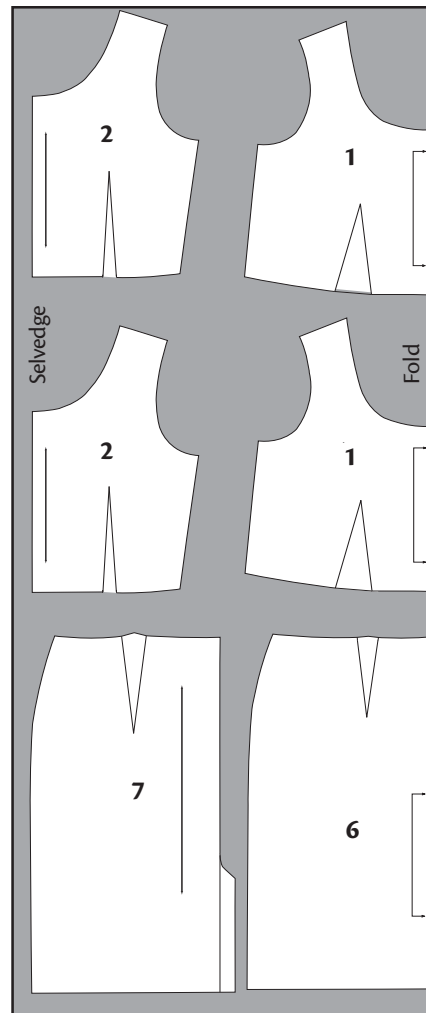
6 Front Straight Skirt, cut one on fold

7 Back Straight Skirt, cut one pair

Dress B: Fabric width 115cm or 150cm
 You will need 1.5m of fabric



CUTTING LAYOUT



BETTE Top C

sewsupplies

150cm x 1m, Chinese Brocade
 Concealed zip, 12cm

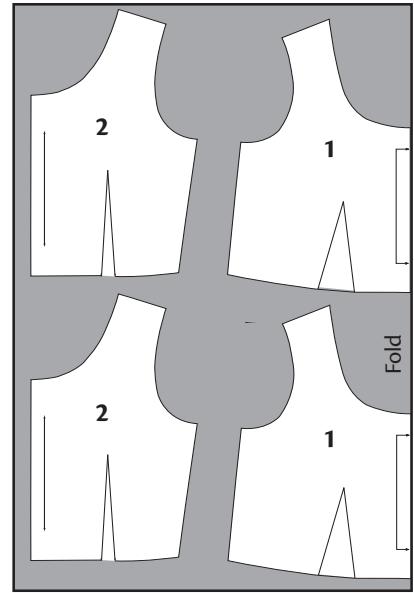
patternpieces

1 Front Bodice, cut two on fold (one becomes lining)

2 Back Bodice, cut two pairs (one becomes lining)

Top C: Fabric width 114cm or 150cm you will need 1m fabric

CUTTING LAYOUT



BETTE Skirt D

sewsupplies

150cm x 1m, silk dupion

Concealed zip, 23cm

Skirt hook and bar

Light weight interlining, Iron-on

patternpieces

6 Front Straight Skirt, cut one on fold

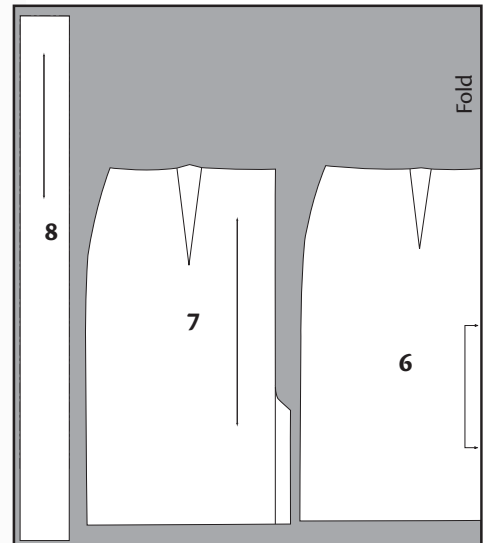
7 Back Straight Skirt, cut one pair

8 Waistband, cut one in fabric, cut one in interlining

Skirt D: Fabric width 114cm or 150cm you will need 1m fabric



CUTTING LAYOUT





making up

Bette Dress A Refer to cutting layouts

Pattern pieces 1, 2, 3, 4 & 5

1 Layout your fabric as instructed in the cutting layouts, adhering to all fold lines. From the printed cotton place Pattern Piece 1 (Front Bodice) on the fold and cut out two (one of these will act as lining). Then cut two pairs of Pattern Piece 2 (Back Bodice), again one pair will become the lining. Place Pattern Piece 3 (Front Full Skirt) on the fold, cut one. Next cut one pair of Pattern Piece 4 (Back Full Skirt). These pieces form one front skirt piece and two back skirt pieces. With fabric laid flat, cut one pair of Pattern Piece 5 (Side Full Skirt). With tailor's chalk mark on the relevant notches to the wrong side of the fabric.

2 Fold the net in a rectangle 124cm wide, cut along the fold but leave the two layers together. Cut a 38cm x 135cm rectangle from the lining fabric, this will become the top of the net under skirt.

3 With wrong side facing and using a straight machine stitch sew the darts in the front bodice and then the back bodice pieces. Once stitched in place, press the darts towards the centre of the garment. Repeat this process to dart the lining pieces.

4 With right sides facing, align the shoulder seams of the front and back bodice pieces and pin to secure. Using a straight machine stitch join the two pieces together with a 1.5cm seam allowance. Repeat this process for the lining.

5 Lay the lining on top of the bodice with the right sides of the fabrics facing. Match the necklines together, aligning the shoulder seams and the centre backs and front and pin to secure. Working with a straight machine stitch join together with a 1.5cm seam allowance. Trim away half of the seam allowance and then clip around the curve to allow the piece to lay smooth.

6 Stay stitch the neckline. This line of stitching gives the neckline a smooth finish and prevents the lining from rolling out to the right side of the garment. Fold the seam allowance towards the lining and then stitch on the right side, as close as you can to the seam line through all three layers and press.

7 Stitch the armholes; this is achieved in two sections, the front (up to the shoulder seam) and then the back. Place the bodice in front of you with the right side of the fabric towards you. Start by folding in the seam allowance of the bodice and the lining on the corner of the armhole and the front side seam; pin together. Continue working along the armhole matching and pinning the lining and the bodice together until you reach the shoulder seam. Stitch together with a straight machine stitch leaving a 1.5cm seam allowance, trim away the seam allowance and clip the curve. Pull the stitched part of the armhole to the right side again. Next repeat this process starting at the back side seam and armhole corner, stitching up towards the shoulder seam, in line with the previous stitching line.



The fullness of this dress is achievable due to the skirt being made up from five panels. Here it's boosted with an additional net underskirt.

BETTE Dress A

Again trim and clip around the curve before turning back to the right side. Repeat the process to the remaining armhole.

8 Join the side seams together. The bodice side seams and the lining will be treated as one long seam. With wrong sides outermost match the underarm seams together, folding the seam allowances over onto the lining side of the bodice and pin into place. With a straight machine stitch work a consecutive seam from one end of the main fabric to the other end of the lining, leaving a 1.5cm seam

allowance. Press the seam open and press the armholes.

9 Make up the skirt. With right sides facing, align the side skirt pieces to the front skirt piece, ensuring that all the notches match up and pin into place. Work in a straight machine stitch to join the pieces together. With the right sides facing pin each of the back pieces to its corresponding side piece, ensuring all notches are aligned, and join with a straight machine stitch. Finally, create the back seam by working a straight stitched seam up to the



Make this with your **FREE** pattern!

IN ASSOCIATION WITH
ABAKHAN
 FABRICS, HOBBY & HOME
 www.abakhan.co.uk

marker for the zip notch.

10 Work two rows of gathering stitches 1cm apart, just below the top edge within the 1.5cm seam allowance, around the waistline of the skirt. A gathering stitch is the longest stitch length setting on your machine, it allows you to pull the threads through the fabric and create a gather in the material. To do this, draw up the threads, pulling an even tension on both threads, the material will begin to bunch up and create the gathering at the top of the skirt. Measure the base of the bodice, and continue gathering the top of the skirt until it is the same length as the base of the bodice. Ensure the gathers are even by working the ripples of fabric along the thread to the full width of the waistband.

11 With the right side of the bodice and the right side of the gathered top of the skirt facing, pin the bodice and skirt together. Stitch the skirt to the bodice with a 1.5cm seam allowance using a straight machine stitch. This stitching line should appear just below the second gathering line.

12 Make up the net underskirt. Stitch a gathering stitch through the centre of the two layers of net and gather until it measures 134cm to correspond to the rectangle of lining fabric. Neaten one of the longer 134cm sides of the rectangle by either zig zag stitching along the edge or overlocking. Fold the lining in half, matching the two shorter edges and stitch the two edges together from the neatened edge upwards, leaving 20cm open at the top of the seam.

13 Place the gathered area, through the centre of the net, along the neatened edge of the lining, pin and then attach the net to the lining by stitching on top of the gathered line of stitching. Pleat the top of the lining to the same measurement as the waist area of the full skirt. Position and pin the pleated edge along the inside of the waistline and use a straight stitch along the top of the gathered waistline of the skirt to join the two pieces.

14 Insert the zip. Stitch the concealed zip into the back opening using a zipper foot or a concealed zipper foot. Fold and press the seam allowance along the two sides of the back opening. Open out the seam allowance and with the right side of the fabric facing place the opened zip face down matching the teeth to the crease line in the seam allowance. Pin in place. If you are using a concealed zipper foot then place the teeth of the zip into the groove and as you stitch the foot will uncurl the teeth and the stitching will be placed right alongside the teeth. If you are stitching with a normal zipper foot you will need to uncurl the teeth with your fingertips; stitch to the top of the back seam. It is impossible to stitch to the end of a concealed zip so leave approximately 5cm of the zip base un-stitched. Back stitch and then stitch the other side of the zip in place. Carefully thread the zip pull through to the right side at the top of the back seam and pull up to close.

15 Fold the seam allowances in along the edges of the bodice lining and lay over the seam allowances of the bodice on the inside around the waist, matching all the

seams and darts together; pin and then hand slip stitch along the bodice waist seam and along the sides of the zip.

16 Overlock or zig zag the base of the hem working around the entire length of the full skirt. Turn 5mm in towards the wrong side and then machine edge stitch all the way around the skirt hem to finish.



Bette Dress B

Refer to cutting layouts Pattern pieces 1, 2, 6 & 7

1 From the floral linen place Pattern Piece 1 (Front Bodice) on the fold and cut out two (one of these will act as lining). To do this, carefully unpin the pattern piece after you have cut one and pin to a different part of the fabric, as indicated in the cutting layout. Cut two pairs of Pattern Piece 2 (Back Bodice) again one pair will become the lining. Working to the fold in the fabric, cut one of Pattern Piece 6 (Front Skirt); and working away from the fold cut one pair of Pattern Piece 7 (Back Skirt). With tailor's chalk mark on the relevant notches to the wrong side of the fabric pieces.

2 The bodice is made in exactly the same way as for **DRESS A steps 3 - 8**

9 Make up the straight skirt. First, neaten the fabric, by overlocking or zig zag stitching, the side seam edges and the centre back seam edges including the edge of the back pleat. This will stop fraying.

10 With the right sides facing pin the darts to the top of the front skirt and stitch using a straight machine stitch. Press the darts towards the centre front to finish. Repeat the process on the back skirt pieces and press the darts towards the centre back.

11 With the wrong side facing pin the centre back seam from the top of the pleat to the base of the zip notch. Sew the seam with a straight machine stitch, securing at each end by back tacking (setting the machine to reverse and working over a couple of stitches at each end).

12 With right sides facing, align the front and back skirt piece and pin together to create the side seams. Work a straight stitch line at each side leaving a 1.5cm seam allowance. Clip the seam at the top of the back pleat and then press all the seams open.

13 With the right side of the bodice and the skirt facing, match the side seams, darts and the centre fronts together and pin to secure. Sew through the waistline with a straight machine stitch leaving a 1.5cm seam allowance. The bodice lining should not be included in this seam. Press the seam allowance up into the bodice.

14 Insert the zip. Follow DRESS A steps 15 & 16 to insert the zip and hand finish the bodice lining.

17 Overlock or zig zag the base of the skirt and then press up the 3cm hem. Fold and press the left-hand side of the pleat along the centre back line, the right-hand side of the pleat will be laying underneath. Fold the hem back onto the right side of the skirt on the corner of the pleat and stitch close to the edge along the end of the hem and then turn the hem back onto the wrong side. To the left-hand side of the pleat fold the pleat onto the right side of the skirt and then stitch along the fold line made whilst pressing the hem. Turn the hem and the pleat back to the wrong side.

BETTE Dress B



Bette Top C

Refer to cutting layouts

Pattern piece 1 & 2

1 From the embroidered silk place Pattern Piece 1 (Front Bodice) on the fold and cut out two (one of these will act as lining). Then cut two pairs of Pattern Piece 2 (Back Bodice) again one pair will become the lining. With tailor's chalk mark on the relevant notches to the wrong side of the fabric pieces.

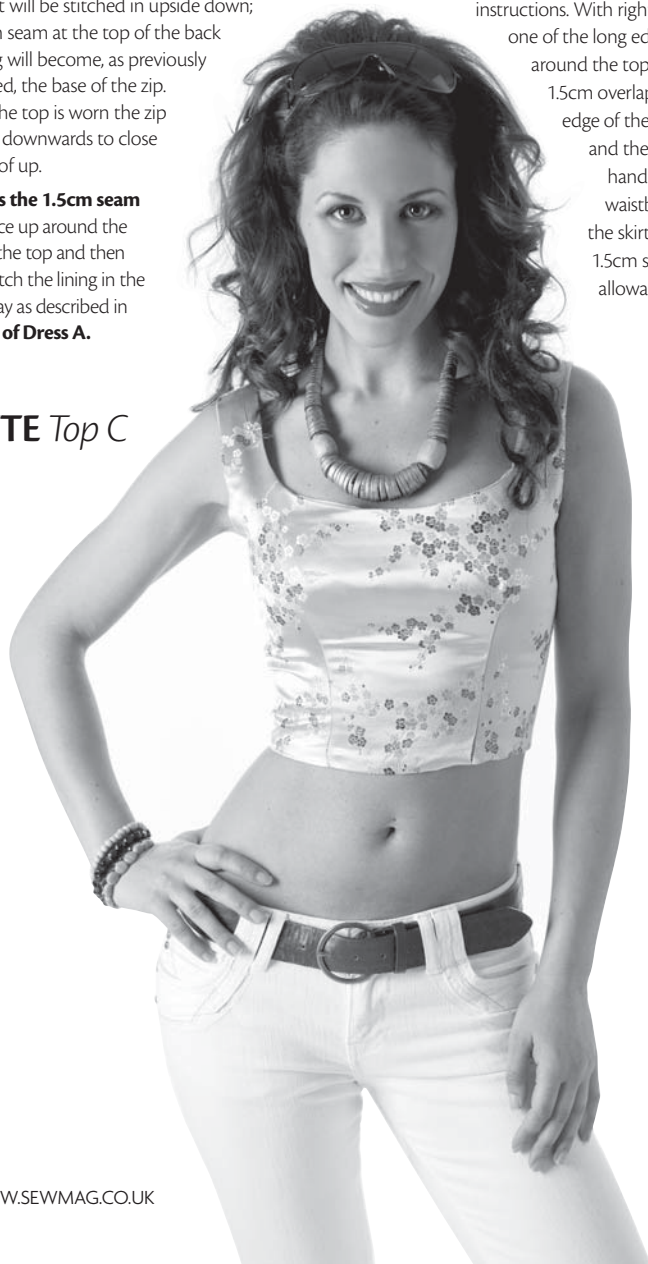
2 The top is made in exactly the same way as the bodice from **Dresses A & B follow steps 3 - 8.**

9 Prepare the top for the zip by turning it so the right sides are facing and pin along the centre back seam for 2cm. Join this small section with a straight machine stitch.

10 The zip in the back of the top is applied in the same way as described in **step 15 of Dress A** except it will be stitched in upside down; the 2cm seam at the top of the back opening will become, as previously described, the base of the zip. When the top is worn the zip will pull downwards to close instead of up.

11 Press the 1.5cm seam allowance up around the base of the top and then hand stitch the lining in the same way as described in **step 16 of Dress A.**

BETTE Top C



Bette Skirt D

Refer to cutting layouts

Pieces 6, 7 & 8

1 Working to the fold in the silk dupion fabric, cut one of Pattern Piece 6 (Front Skirt); and working away from the fold cut one pair of Pattern Piece 7 (Back Skirt). Cut one of Pattern Piece 8 (Waistband) and cut one Pattern Piece 8 (Waistband) from iron on interlining. With tailor's chalk mark on the relevant notches to the wrong side of the fabric pieces.

2 The skirt is made in the same way as the skirt of **Dress B, follow steps 3 - 6** and then insert the 23cm concealed zip as described in **step 15 of Dress A.**

7 Apply the waistband. First adhere the interlining to the waistband to the wrong side of the silk dupion, by following the manufacturer's instructions. With right side facing, pin one of the long edges of the waistband around the top of the skirt, leaving 1.5cm overlapping beyond the edge of the zip on the left-hand side and the extra 3cm on the right-hand side of the zip. Stitch the waistband onto the skirt with a 1.5cm seam allowance.

8 Fold the waistband in half with the right side of the fabric facing with a 3cm overlap at the end. With a straight machine stitch work across the end pivot on the 1.5cm seam allowance and then stitch the remainder of the overlap in line with the waistline stitching. Trim away the corners to reduce bulk and turn this corner to the right side, a small tab will have been formed on which to stitch the shirt hook to.

9 To the remaining end of the waistband, as before, with right sides facing fold the waistband in half. Then fold the stitched seam allowance up into the waistband and then turn the free edge 1.5cm seam allowance of the waistband up as well. Pin to secure all layers and stitch across the end in line with the zip. Turn the band to the right side.

10 Fold and pin the seam allowance along the open edge of the waistband and hand slip stitch in place on the inside of the skirt. Finally, hand stitch the hook and bar to the ends of the waistband.



BETTE Skirt D