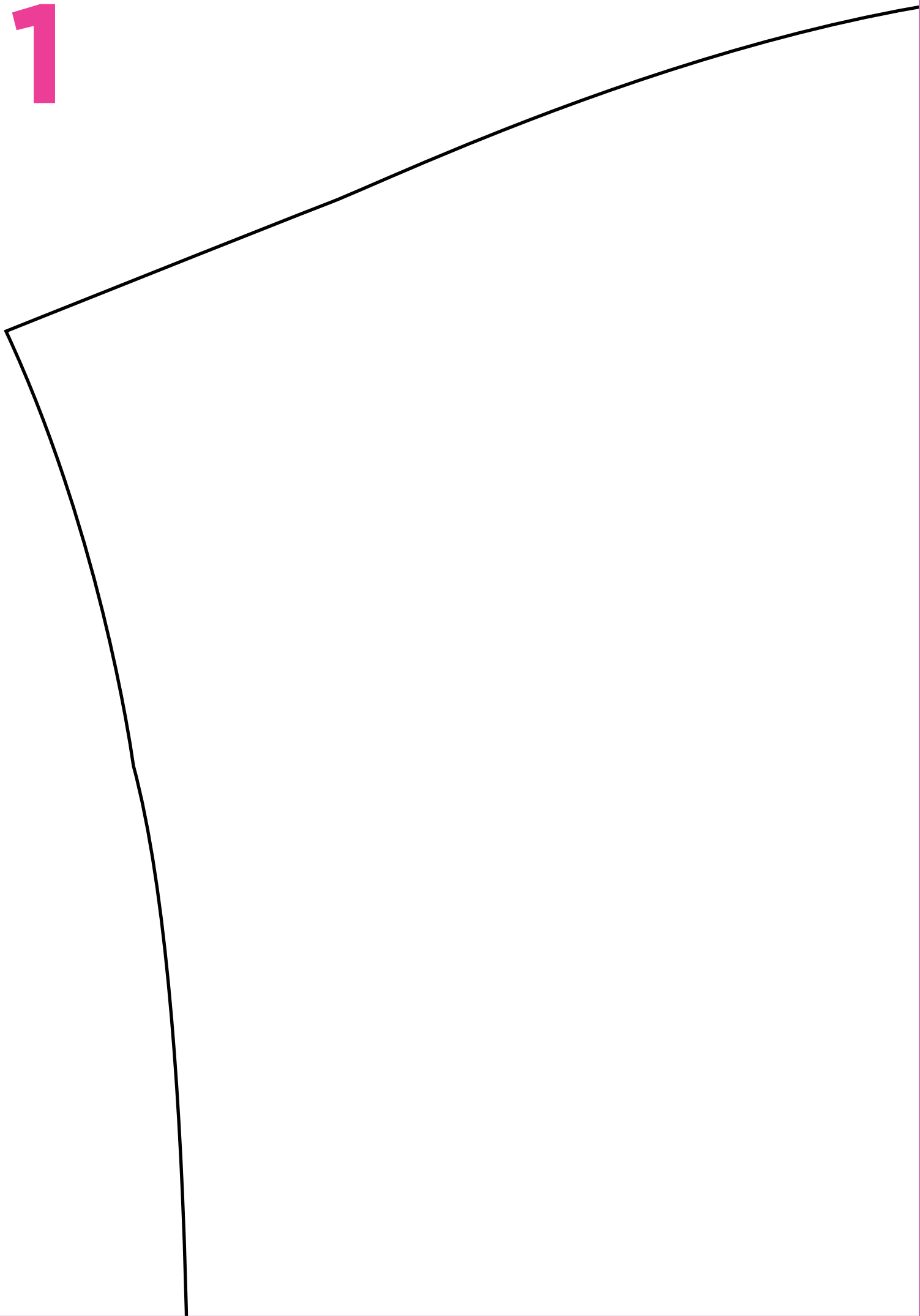


1



2



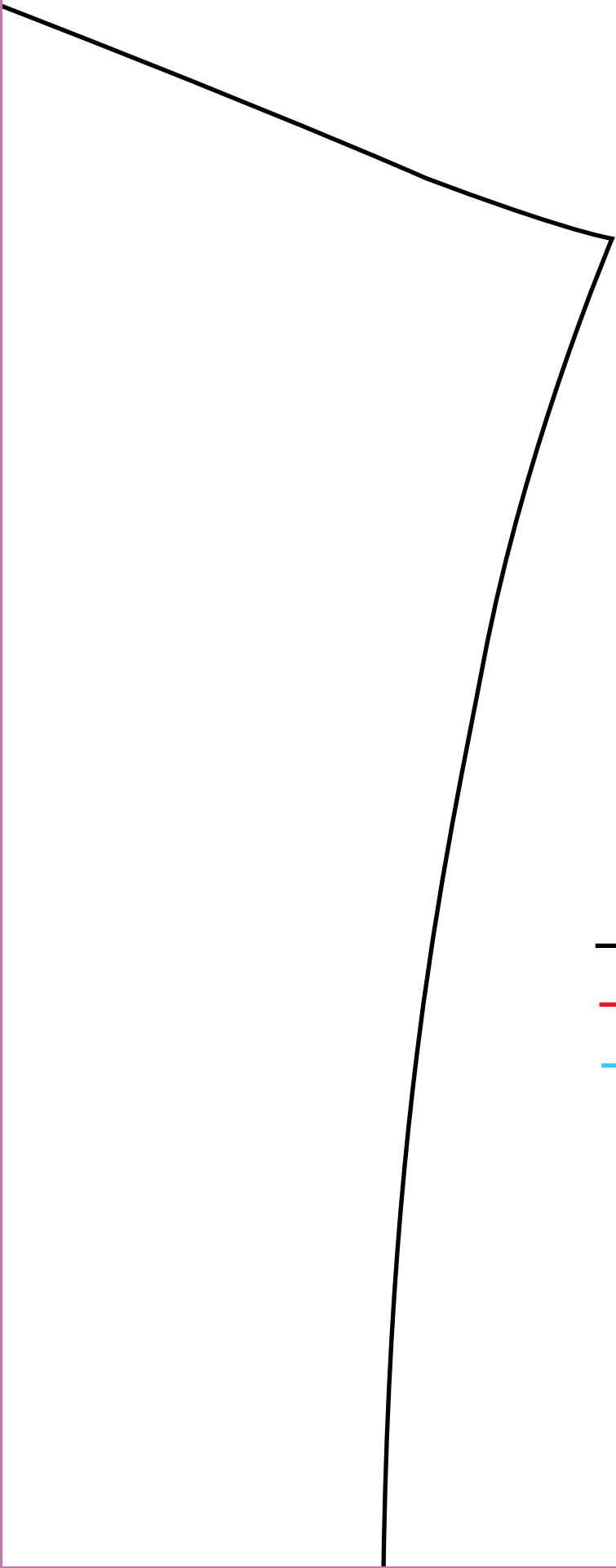
Shoulder notch



SLEEVE

Cut one pair

3



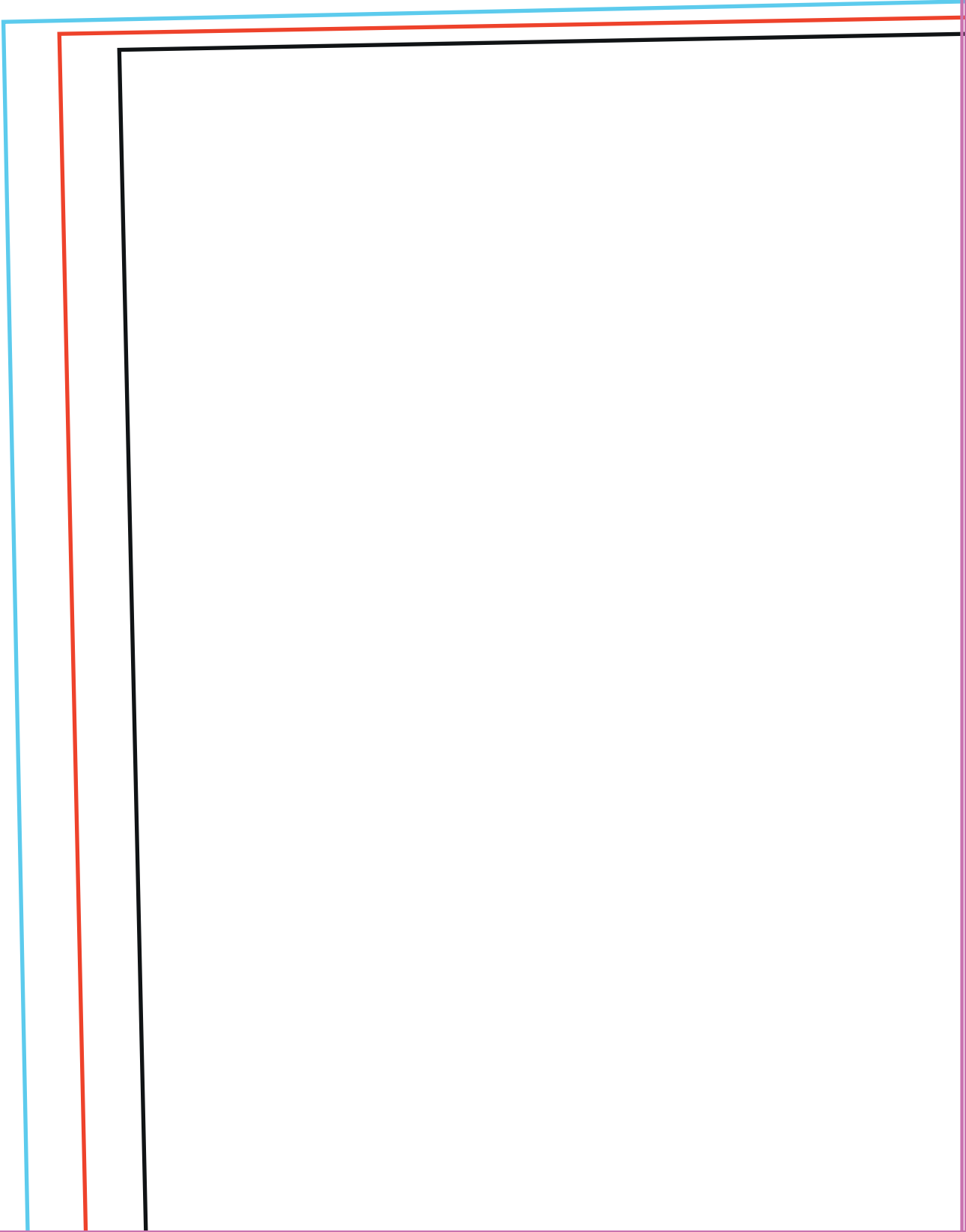
— Small (sizes 8-10)

— Medium (sizes 10-12)

— Large (sizes 12-14)

4

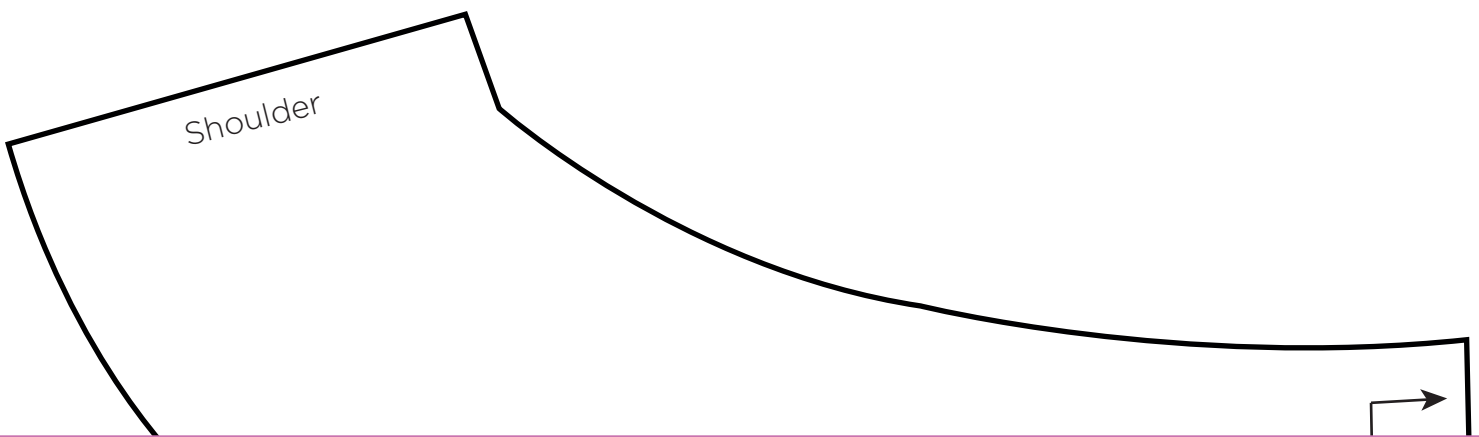
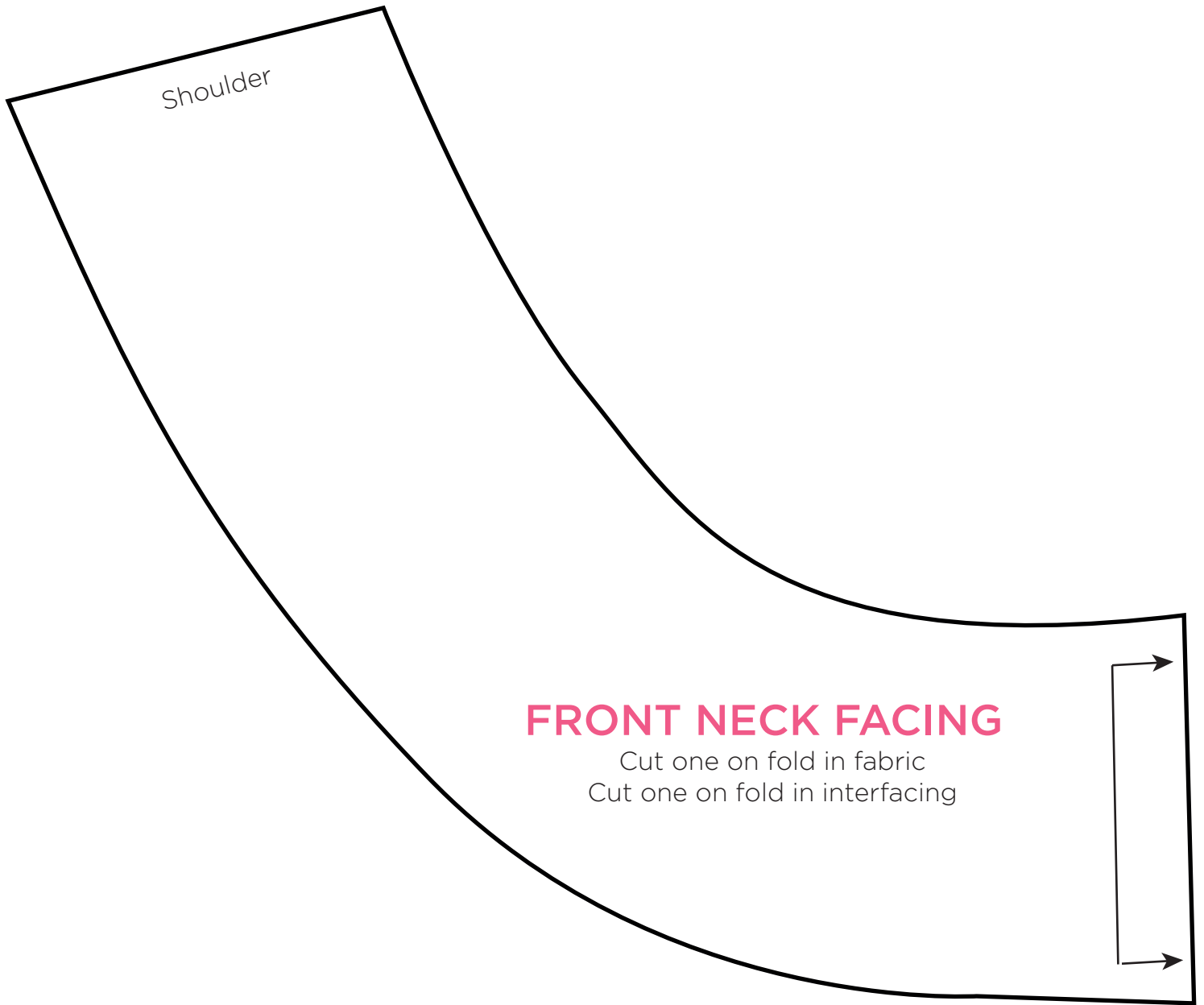
3cm hem



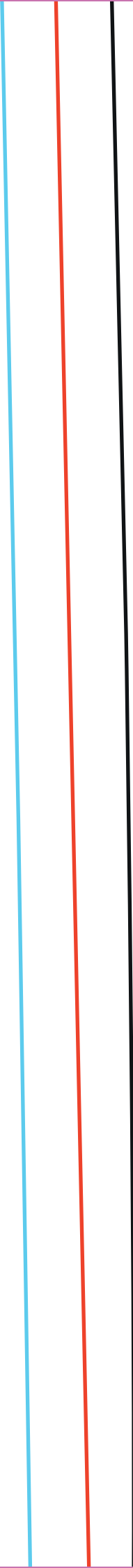
5



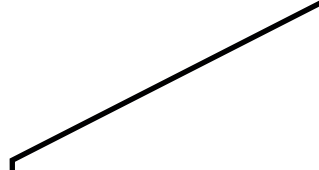
6



7



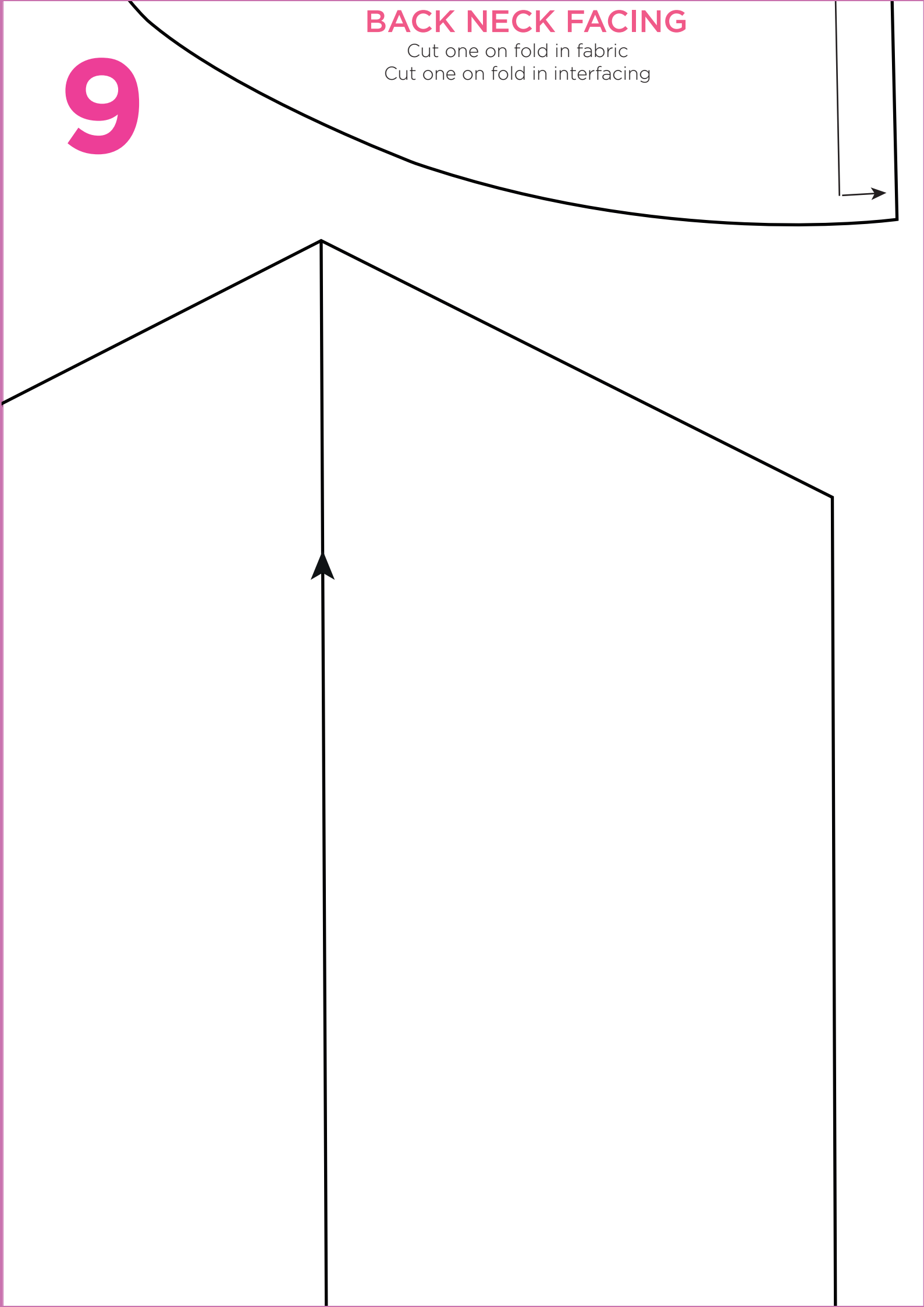
8



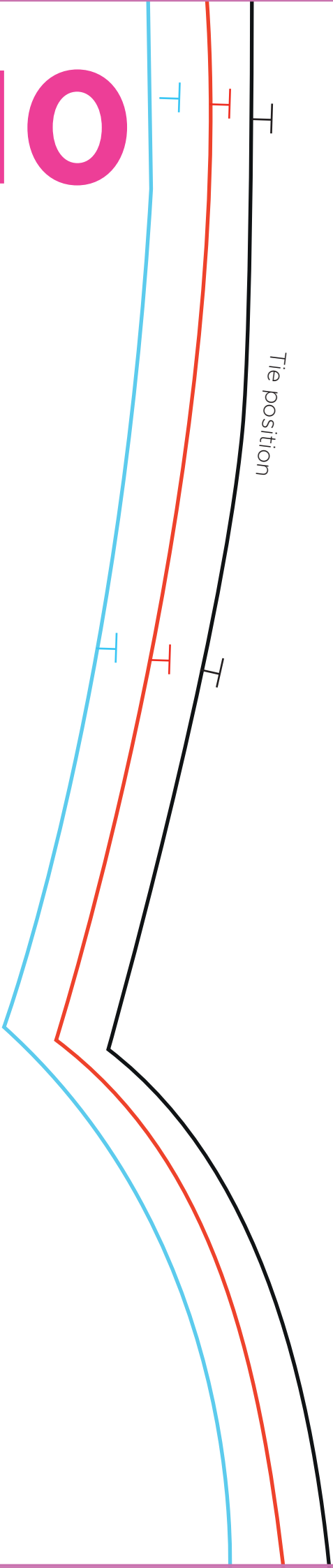
9

BACK NECK FACING

Cut one on fold in fabric
Cut one on fold in interfacing



10



11



Cut one on fold for front (cutting away neckline)
Cut one on fold for back

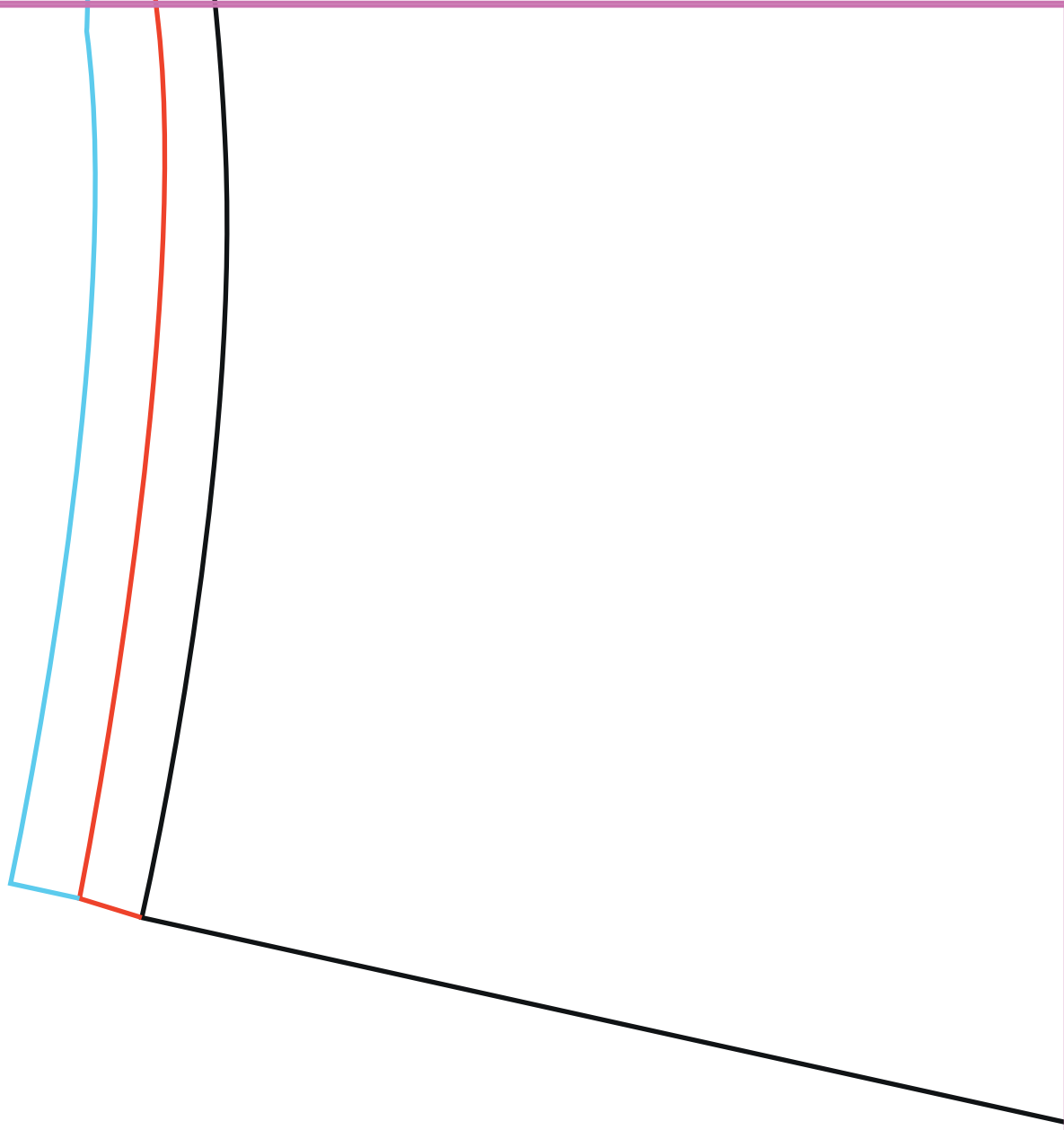
FRONT AND BACK DRESS

12

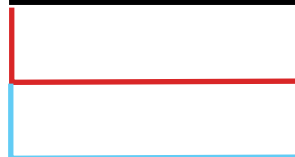
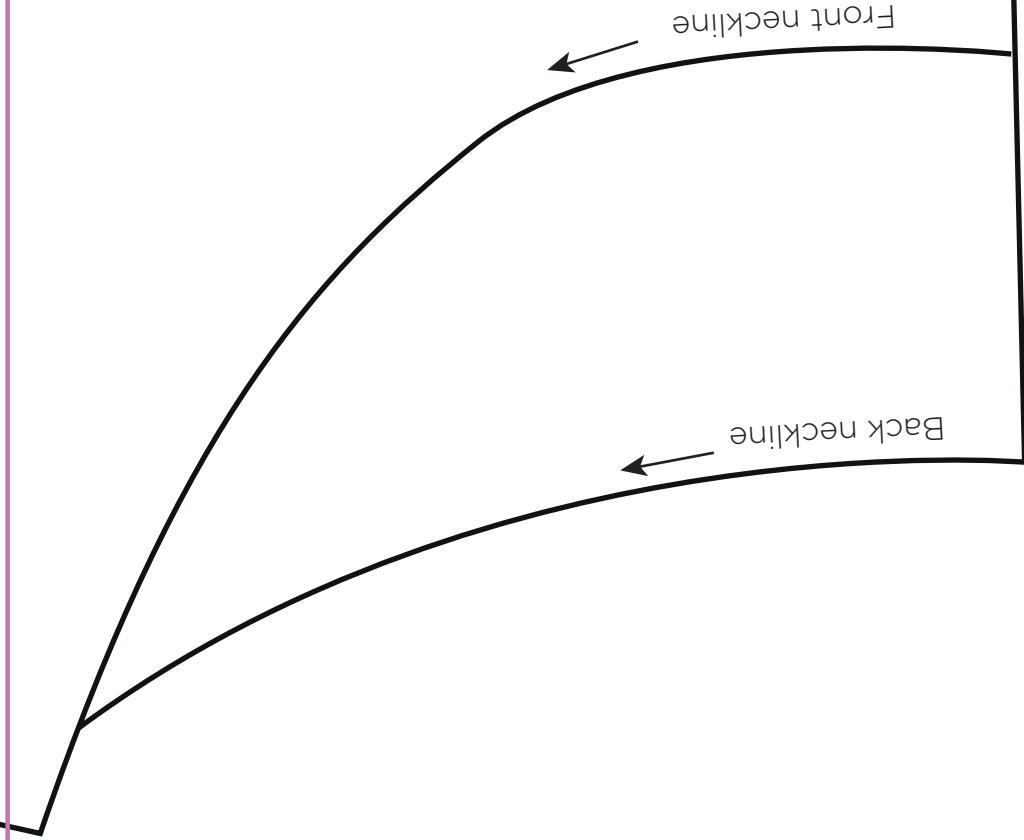
TIE
Cut two

Fold line

13



14



15

