

sew

Issue 103 Christmas 2017

PRINT
OUT
& KEEP

MALLORY TOP TEMPLATE

Use these guides to get started today

IN YOUR PRINT MENU, UNDER SIZE OPTIONS, BE SURE TO SELECT TO PRINT 'ACTUAL SIZE', INSTEAD OF 'FIT TO PAGE'

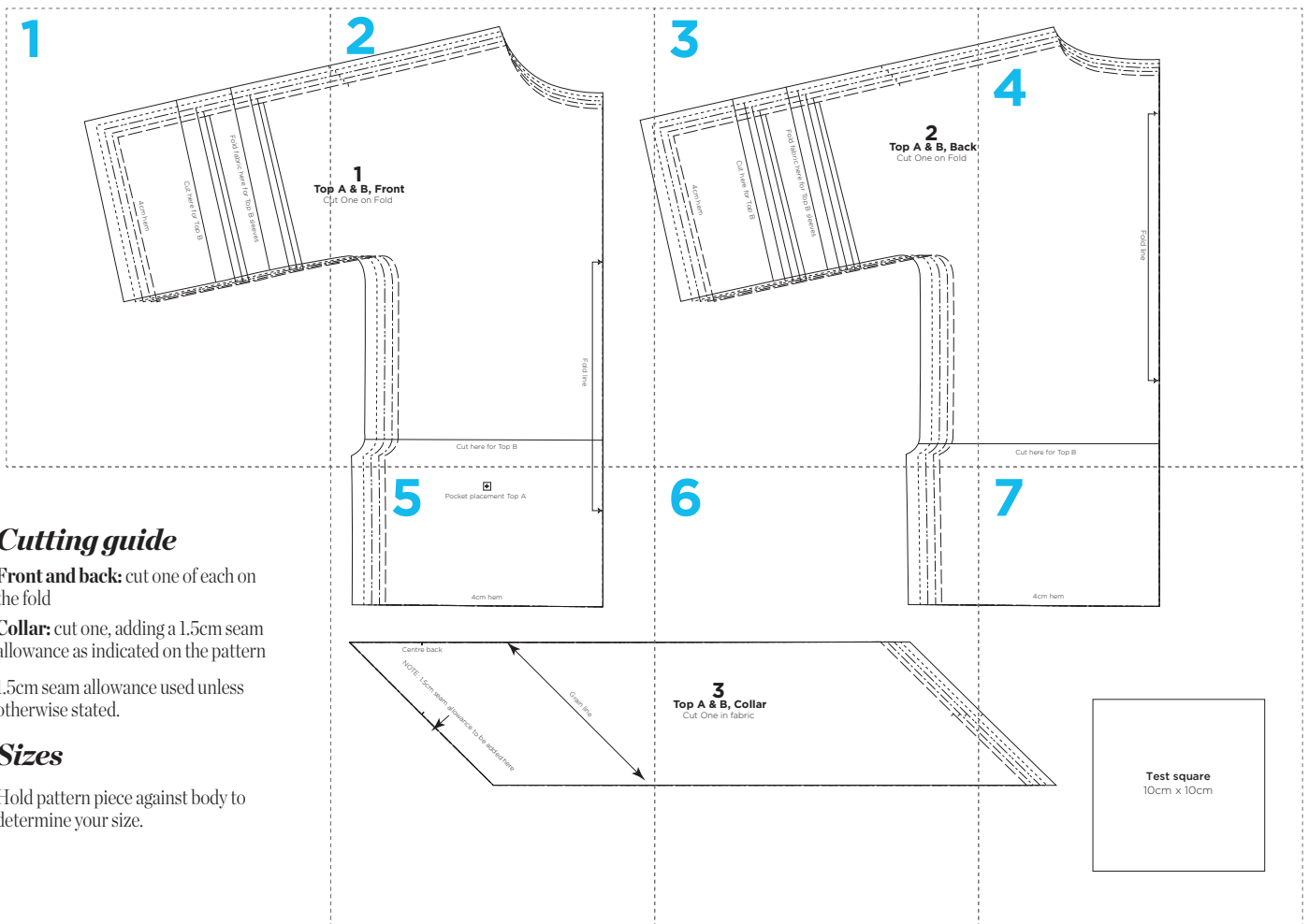
Title: Mallory Top
Designer: Amanda Walker
Magazine page: 38



© ACEVILLE PUBLICATIONS LTD | SEWMAG.CO.UK

All projects, templates and patterns are for personal home use only and cannot be sold or used for commercial purposes.

MALLORY TOP PATTERN LAYOUT



Cutting guide

Front and back: cut one of each on the fold

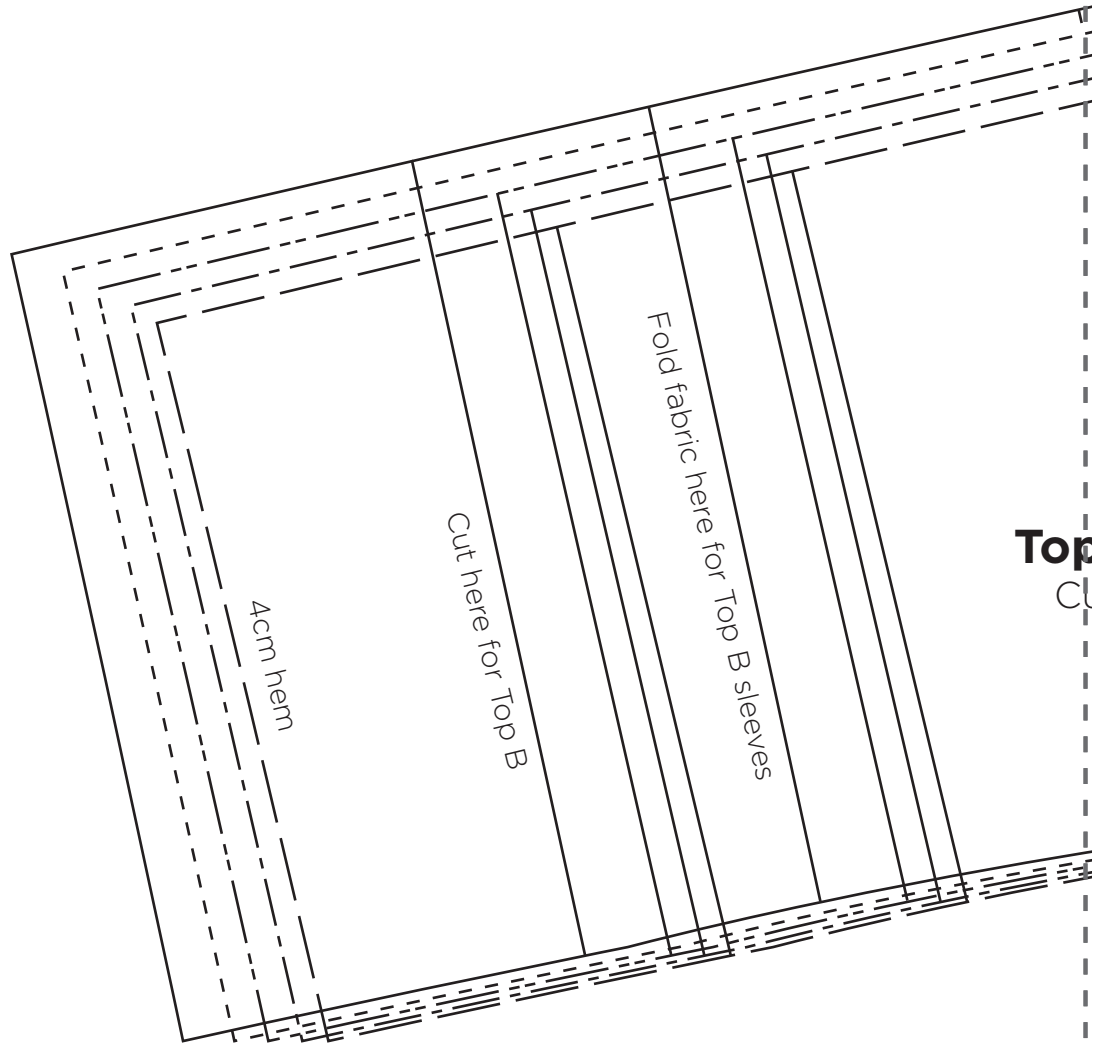
Collar: cut one, adding a 1.5cm seam allowance as indicated on the pattern

1.5cm seam allowance used unless otherwise stated.

Sizes

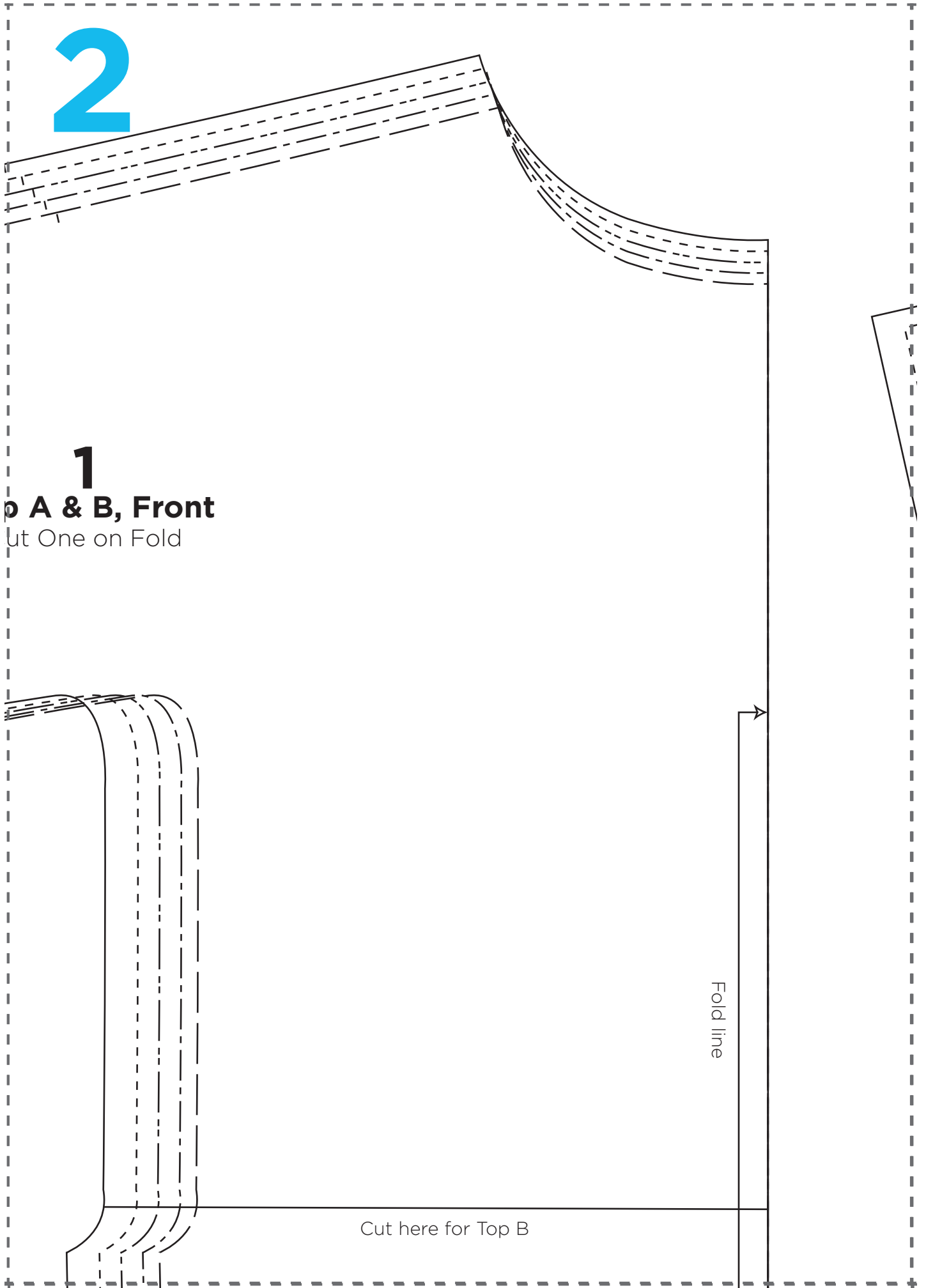
Hold pattern piece against body to determine your size.

1



2

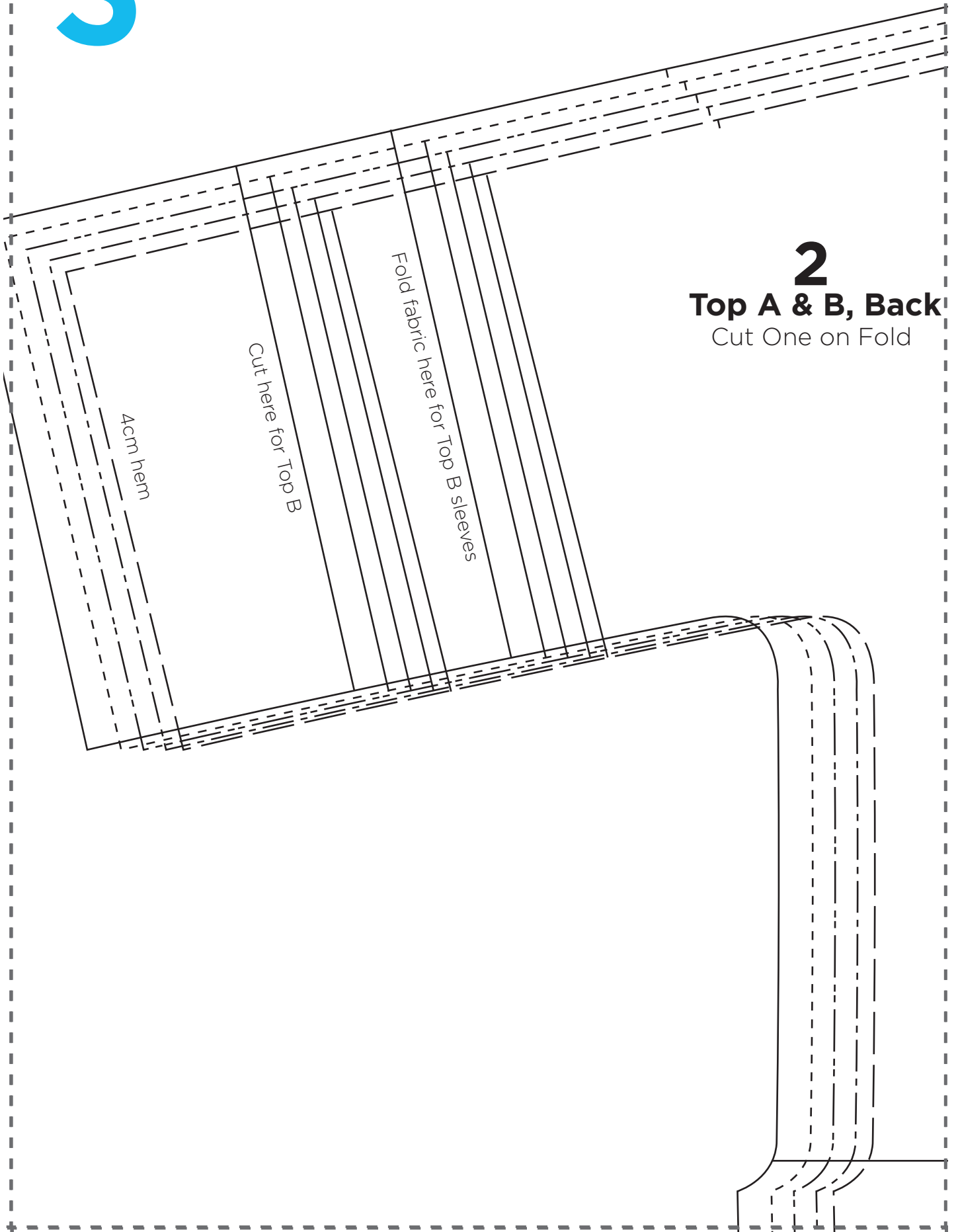
1
Top A & B, Front
Cut One on Fold



Cut here for Top B

Fold line

3



2
Top A & B, Back
Cut One on Fold

4

Fold line

Cut here for Top B

5



Pocket placement Top A

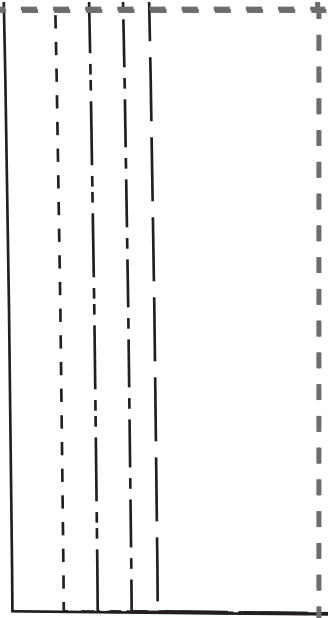
4cm hem

Centre back

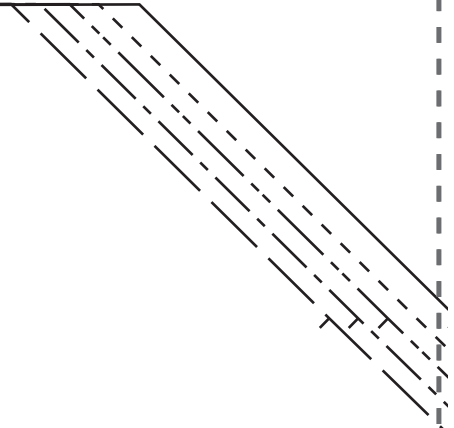
NOTE: 1.5cm seam allowance to be added here

Grain line

6

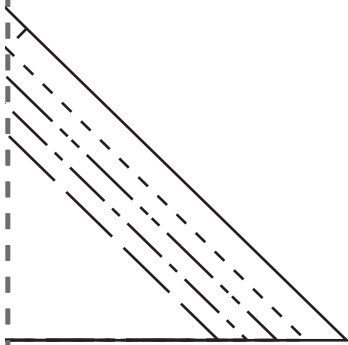


3
Top A & B, Collar
Cut One in fabric



7

4cm hem



Test square
10cm x 10cm