

# PAULA BLOUSE TEMPLATE

Use these guides to get started today

---

IN YOUR PRINT MENU, UNDER SIZE OPTIONS, BE SURE TO  
SELECT TO PRINT 'ACTUAL SIZE', INSTEAD OF 'FIT TO PAGE'

---

**Title:** Paula Blouse  
**Designer:** Yuko Takada (extracted from  
*She Wears The Pants* by Yuko Takada,  
Tuttle Publishing, £13.99, [amazon.co.uk](https://www.amazon.co.uk))  
**Magazine page:** 53



# PAULA BLOUSE PATTERN LAYOUT



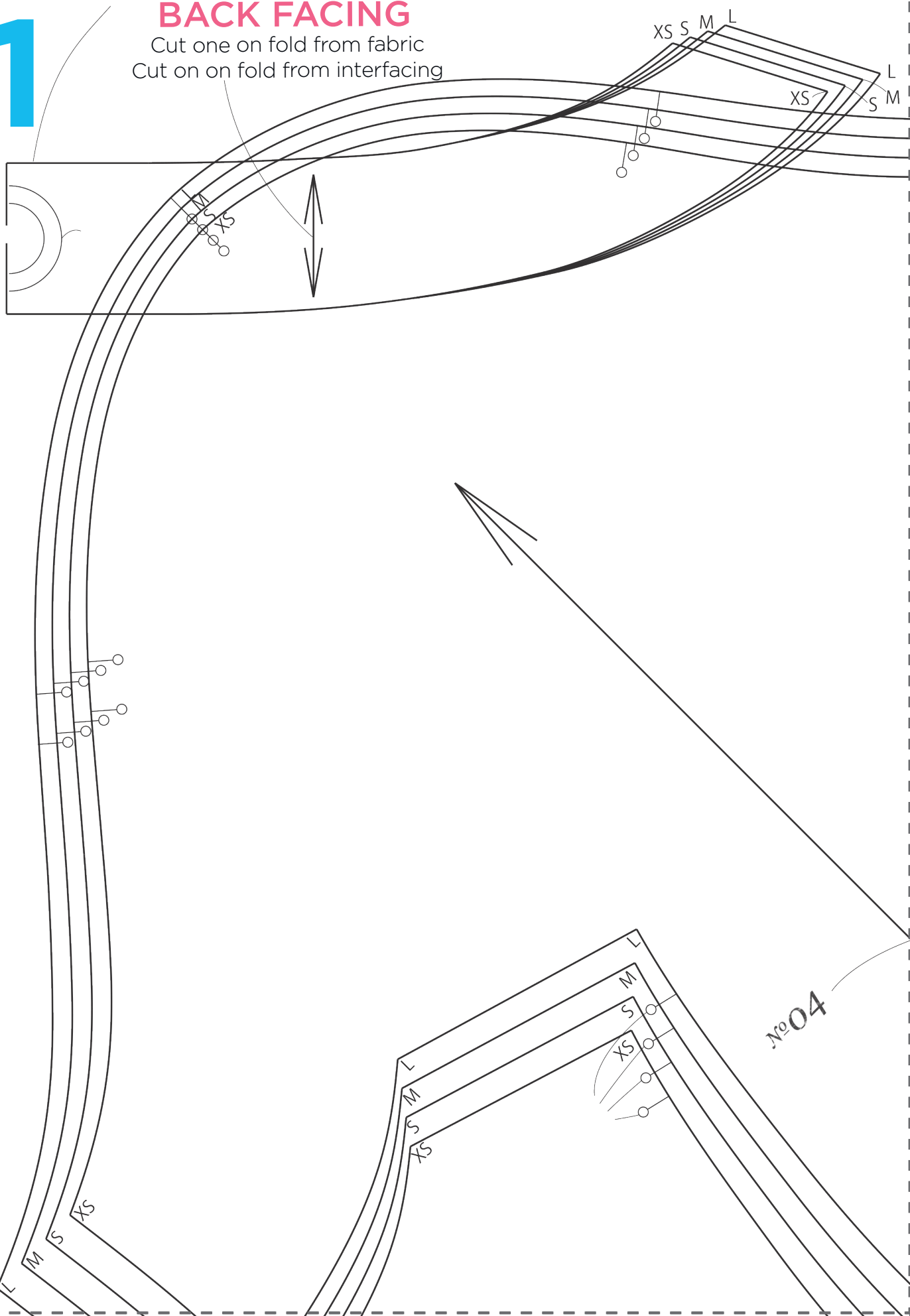
## Sizes

	Height	Bust	Waist	Hips
XS	153cm	78cm	58cm	86cm
S	158cm	82cm	62cm	90cm
M	163cm	86cm	66cm	94cm
L	168cm	90cm	70cm	98cm

# 1

## BACK FACING

Cut one on fold from fabric  
Cut on on fold from interfacing



2

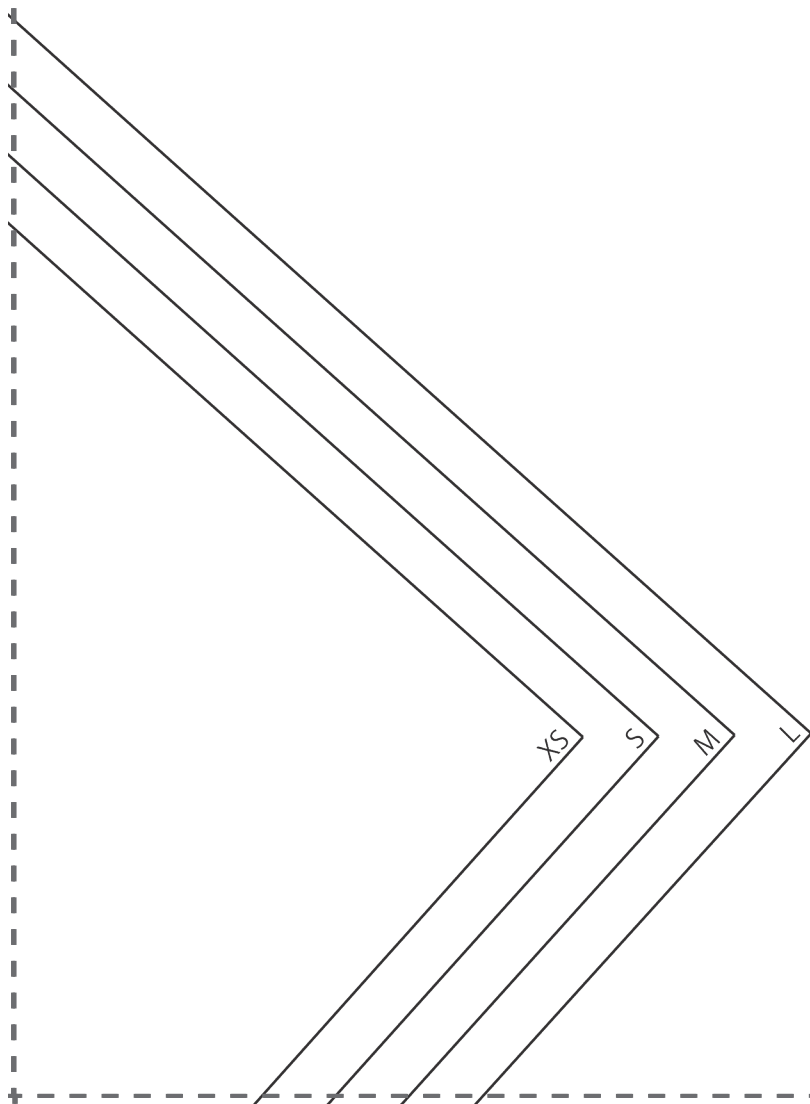
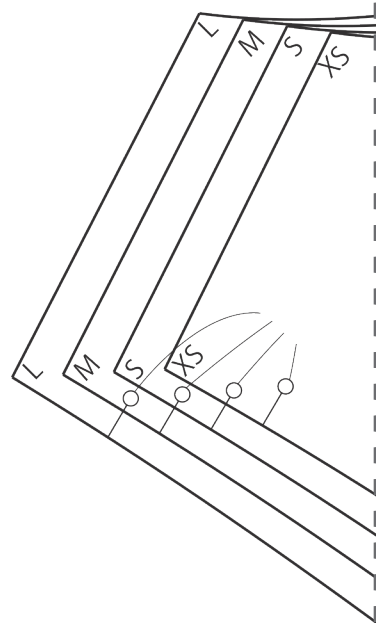
## SLEEVE

Cut two

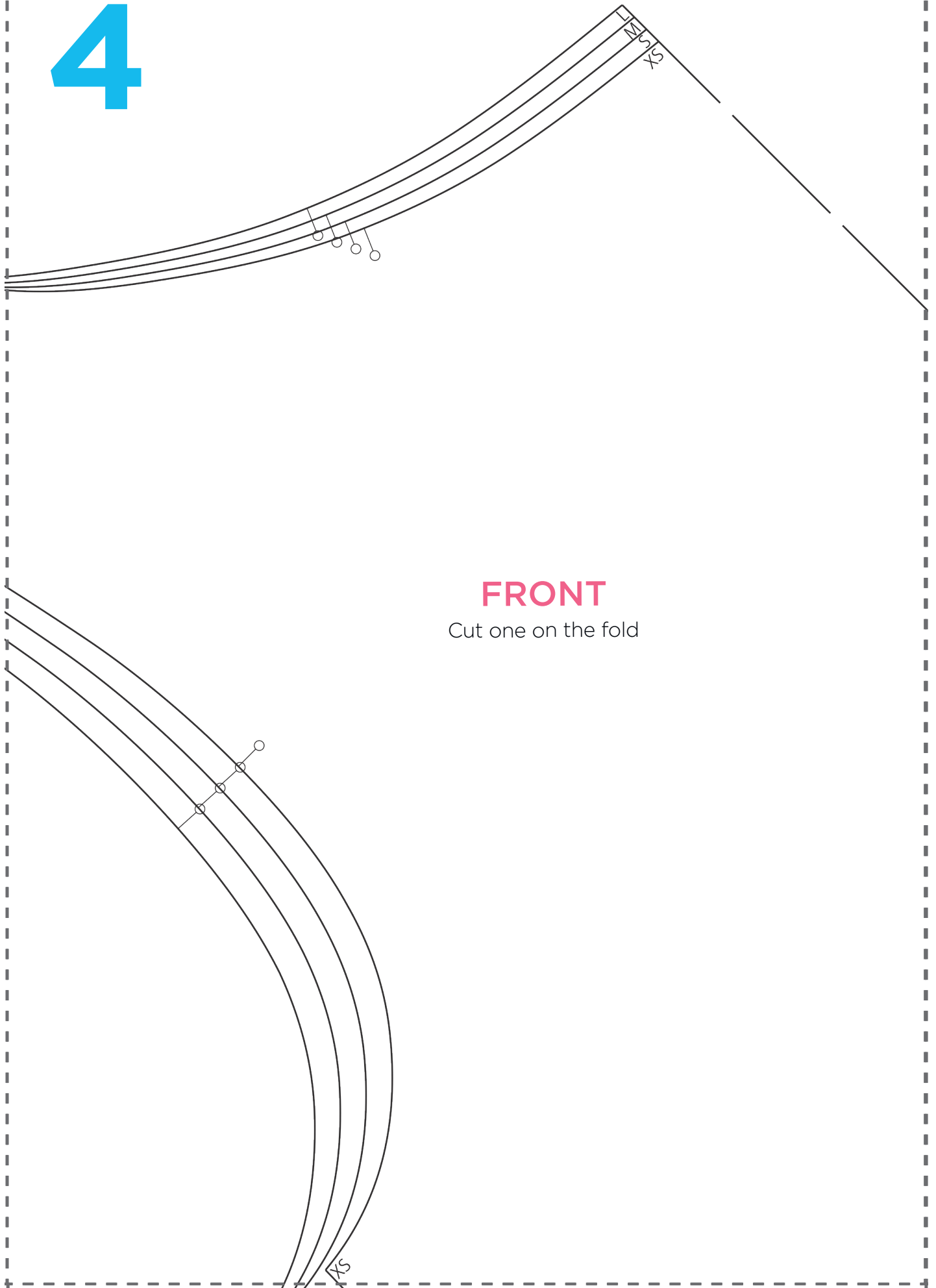
XS S M L



3



4



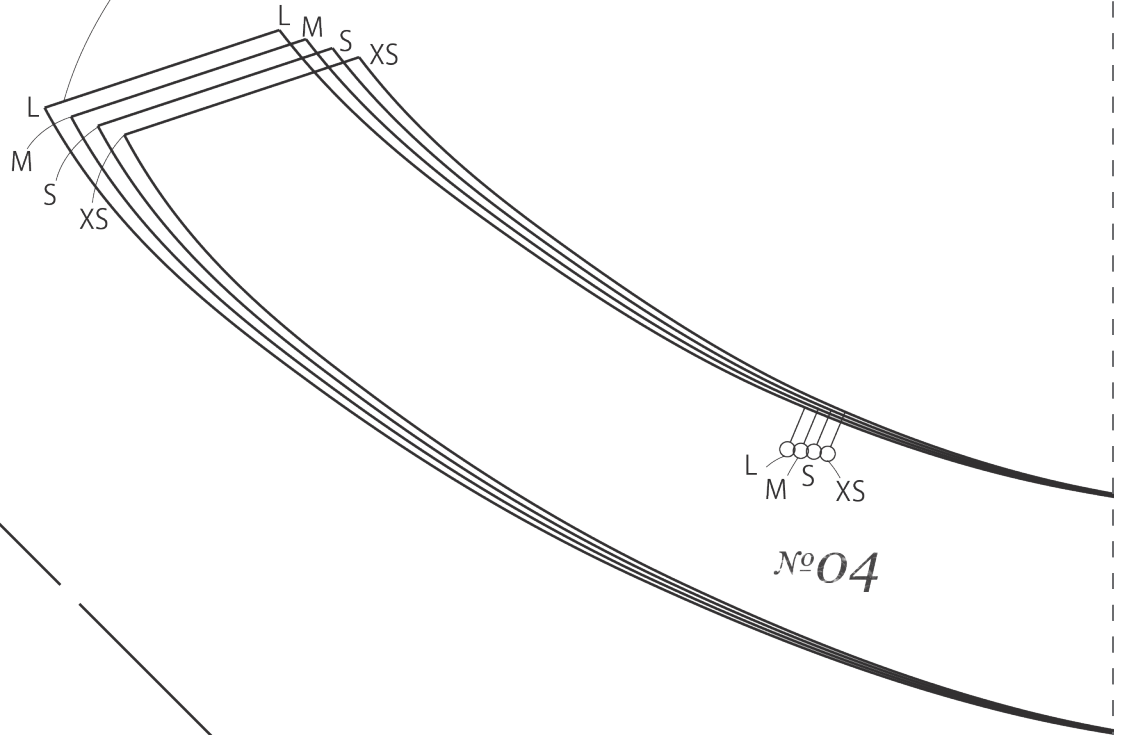
## FRONT

Cut one on the fold

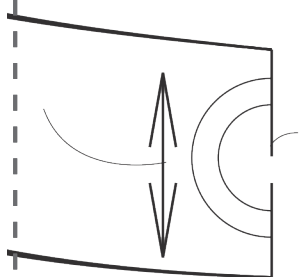
# 5

## FRONT FACING

Cut one on the fold



# 6





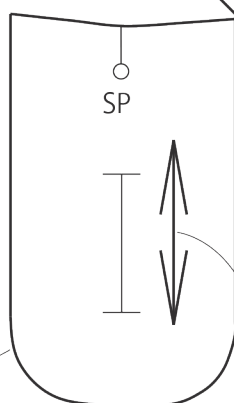
7

BACK

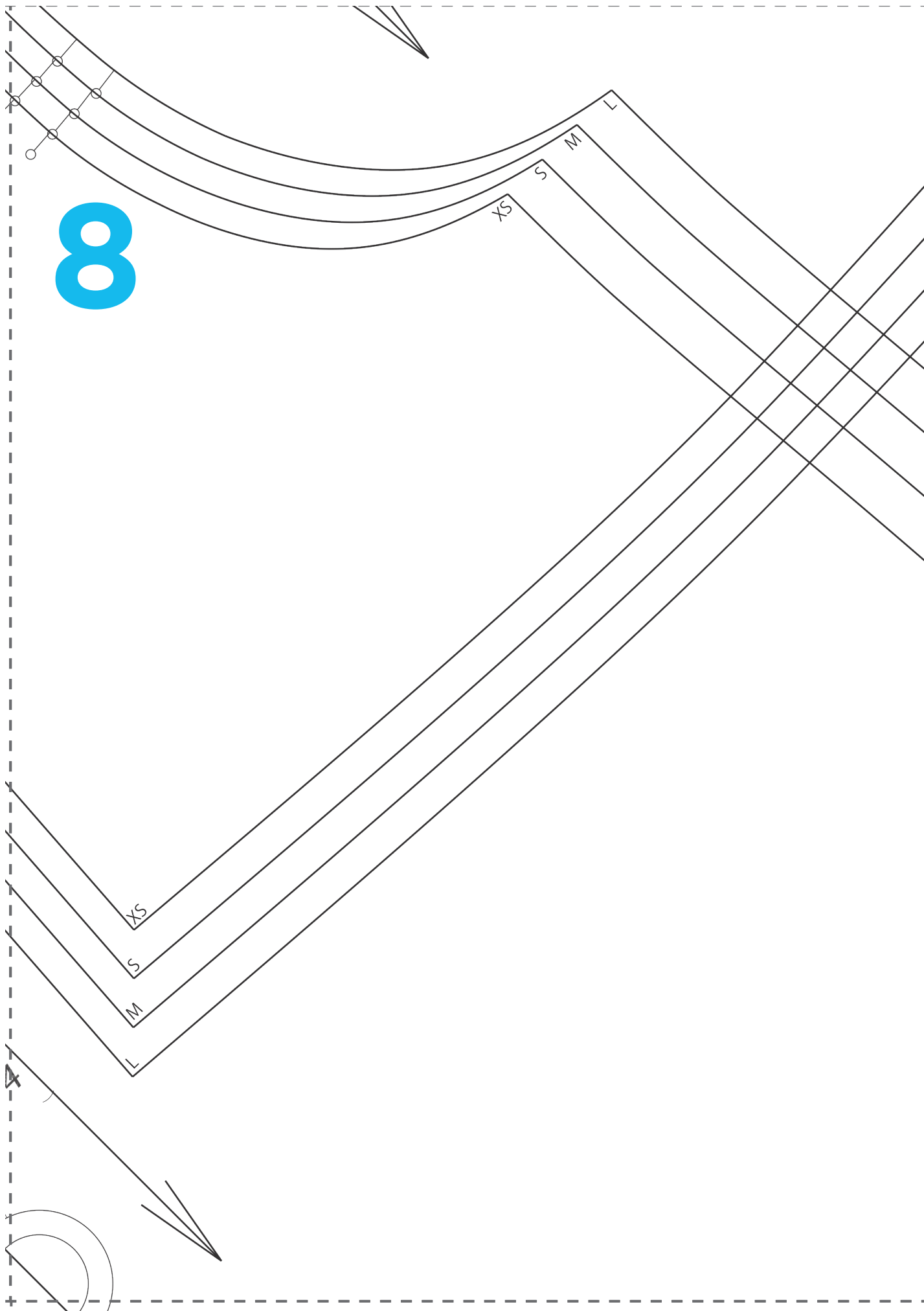
Cut one on fold

EPAULETTE

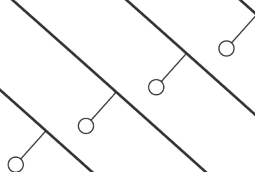
Cut four from fabric  
Cut four from interfacing



8

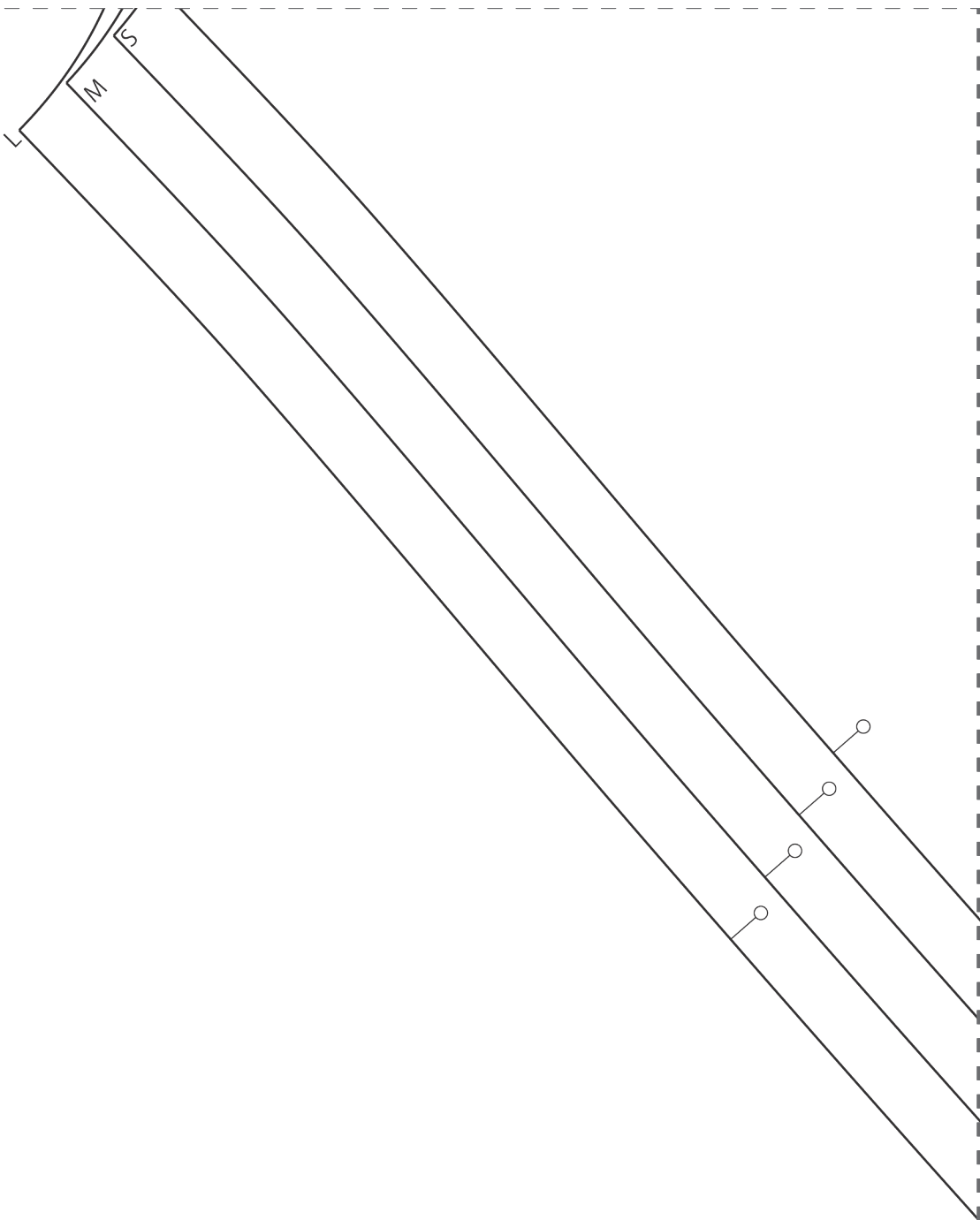


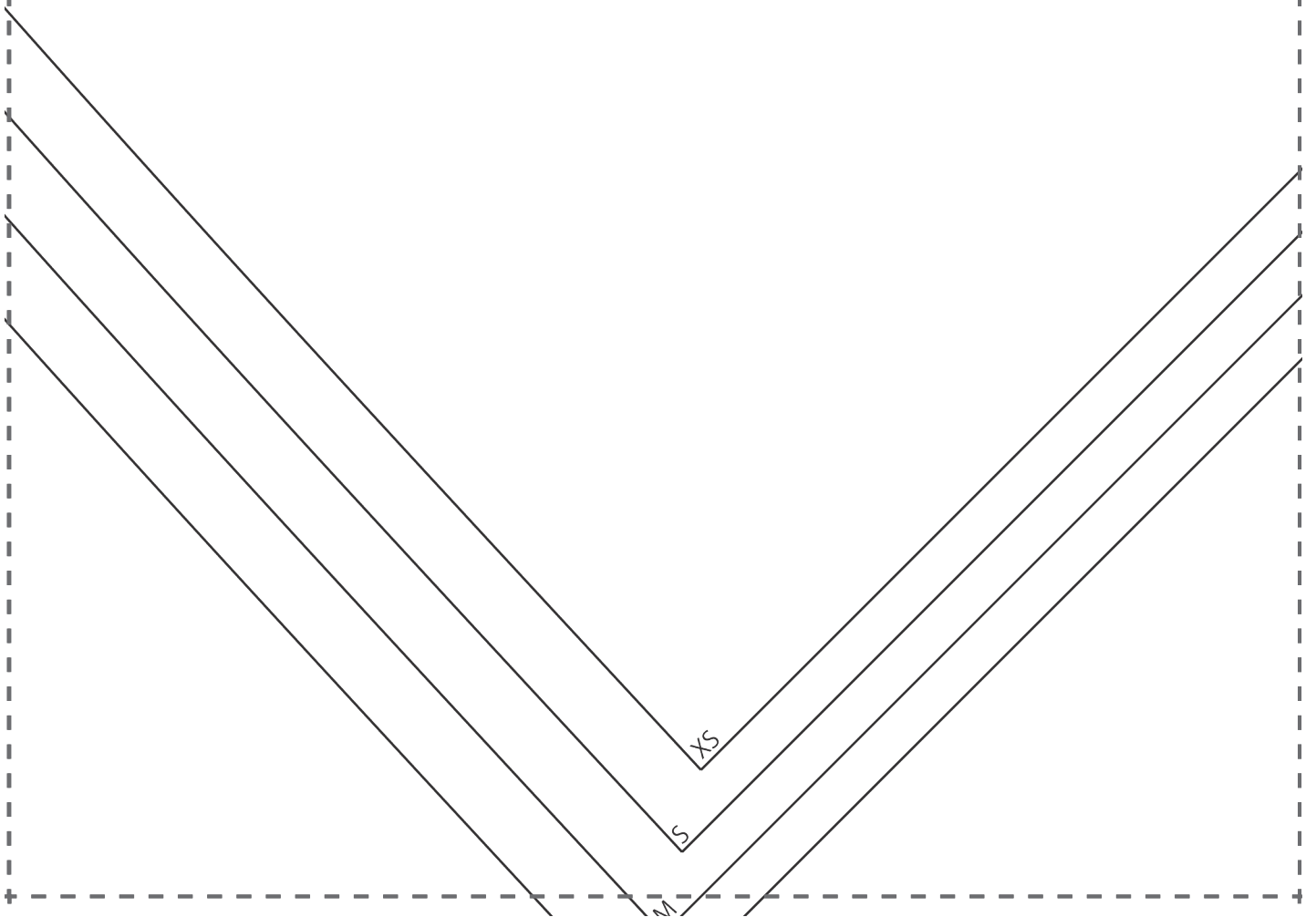
9



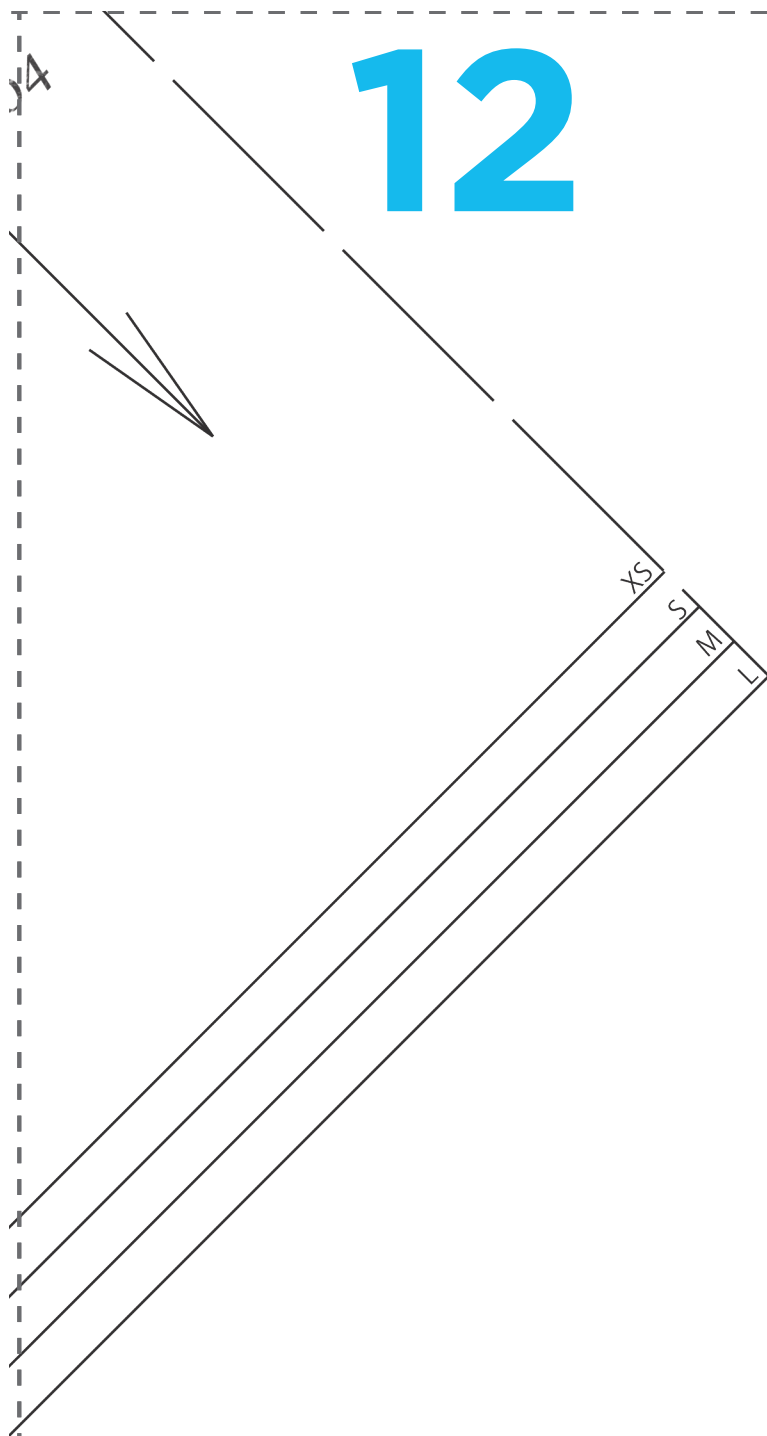
XS S M

10

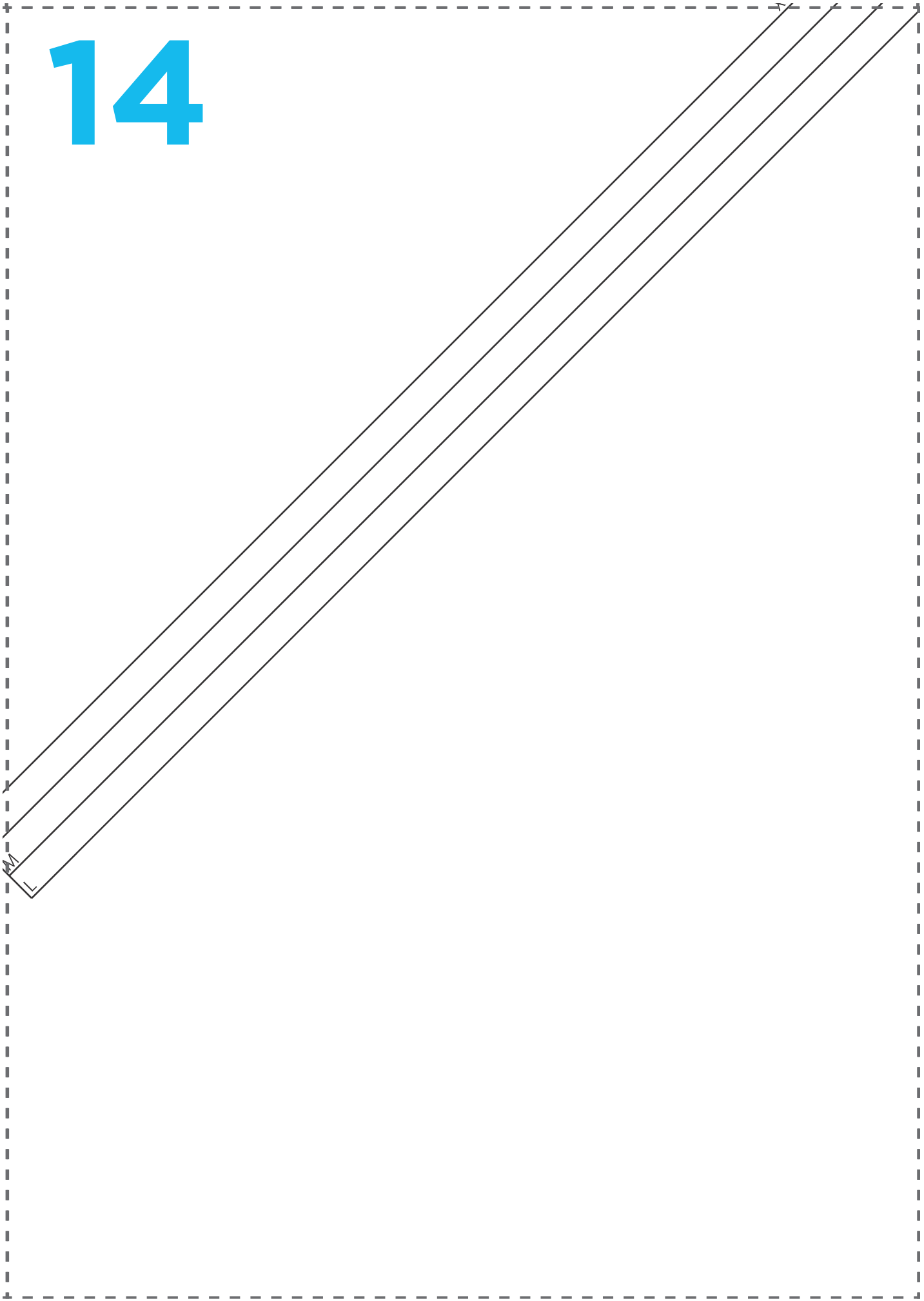




# 12



14



# 15

**Test square**  
10cm x 10cm



# 16

