

Issue 73 July 2015

MOTIFS & TEMPLATES



Use these guides to get started today

FIND THE TEMPLATE YOU REQUIRE ON THE CONTENTS LIST
BELOW AND JUST PRINT OUT THE PAGE OR PAGES YOU NEED
FROM YOUR PRINT MENU

In your print menu, under Size Options, be sure to select
to print 'Actual Size', instead of 'Fit to Page'

Page 2-17

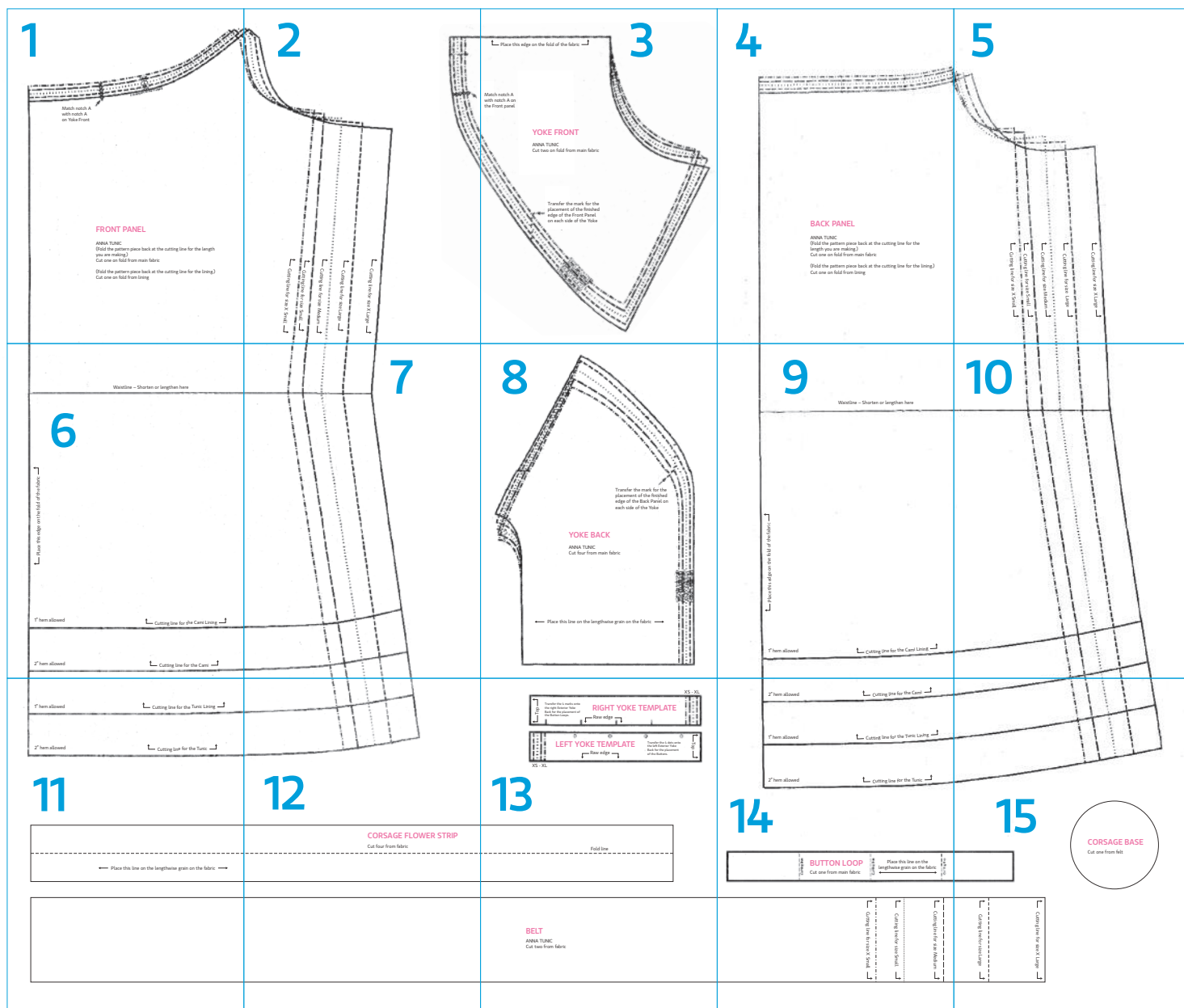
Title: Anna tunic

Designer: Amy Butler

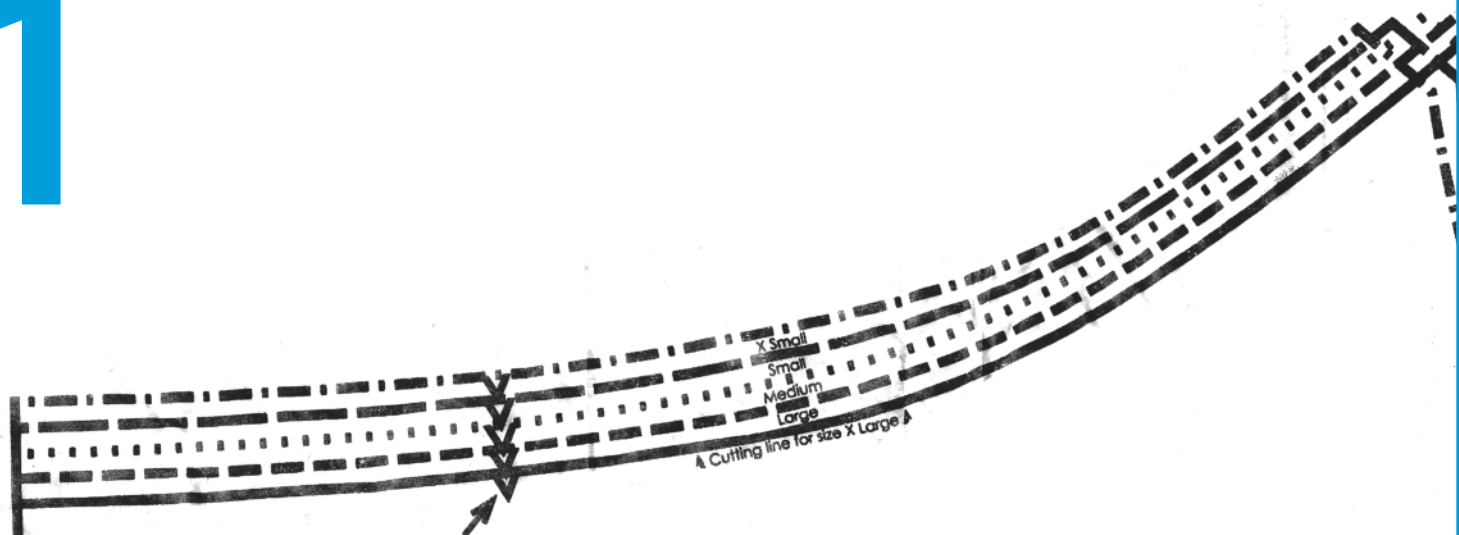
Magazine page: 16

© Aceville Publications Ltd.

All projects, templates and patterns are for personal home use only and cannot be sold or
used for commercial purposes.



1



Match notch A
with notch A
on Yoke Front

FRONT PANEL

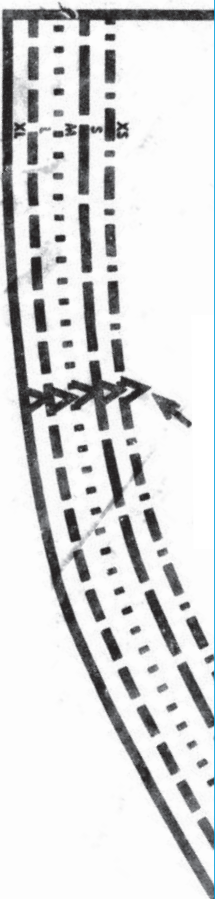
ANNA TUNIC

(Fold the pattern piece back at the cutting line for the length you are making.)

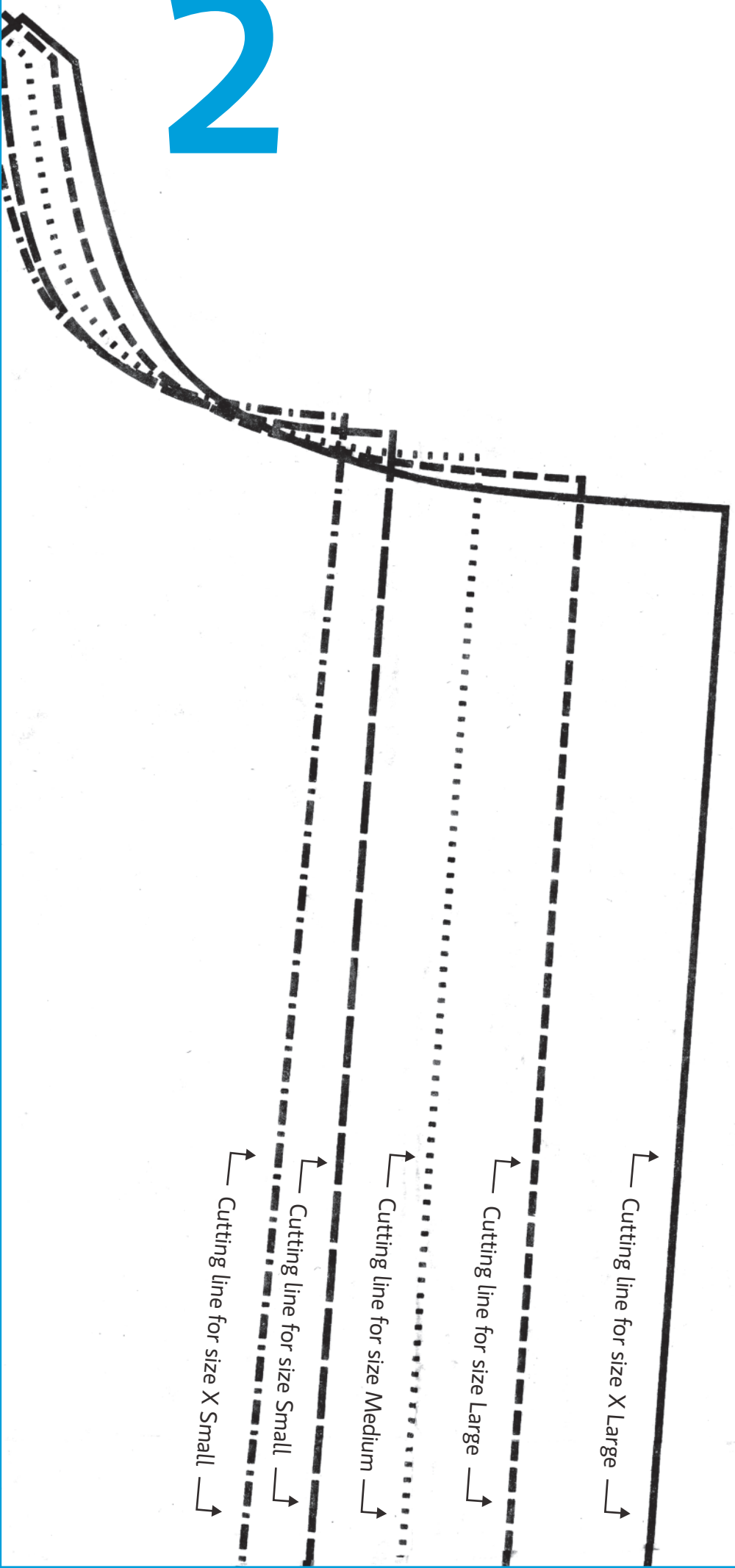
Cut one on fold from main fabric

(Fold the pattern piece back at the cutting line for the lining.)

Cut one on fold from lining



2



3

↑ Place this edge on the fold of the fabric ↓

Match notch A
with notch A on
the Front panel

YOKE FRONT

ANNA TUNIC

Cut two on fold from main fabric

Transfer the mark for the
placement of the finished
edge of the Front Panel
on each side of the Yoke

Cutting line for size X Small
Cutting line for size Small
Cutting line for size Medium
Cutting line for size Large

BACK PANEL

ANNA TUNIC

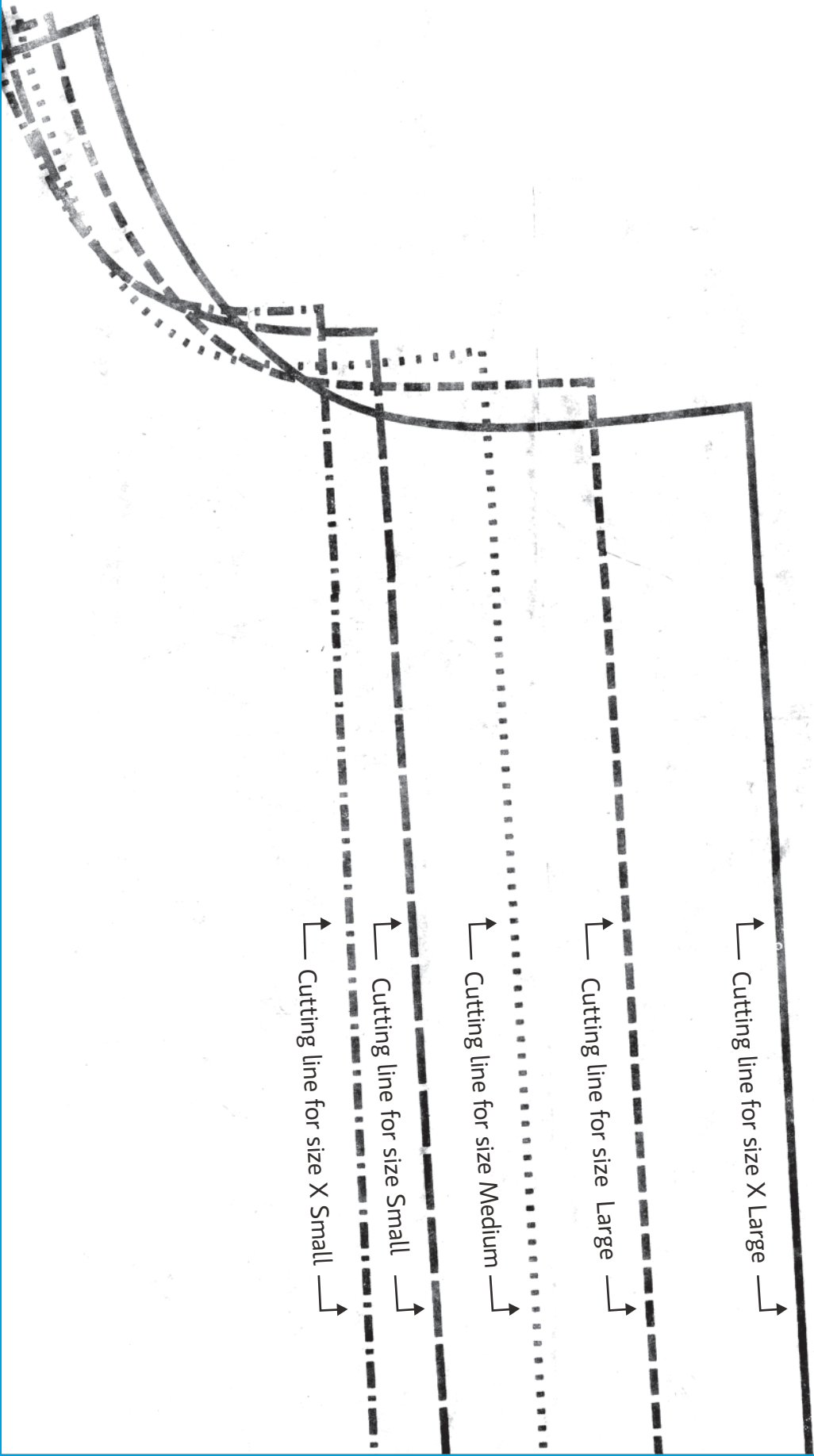
(Fold the pattern piece back at the cutting line for the length you are making.)

Cut one on fold from main fabric

(Fold the pattern piece back at the cutting line for the lining.)

Cut one on fold from lining

5



Waistline – Shorten or lengthen here

6

↑ Place this edge on the fold of the fabric —↑

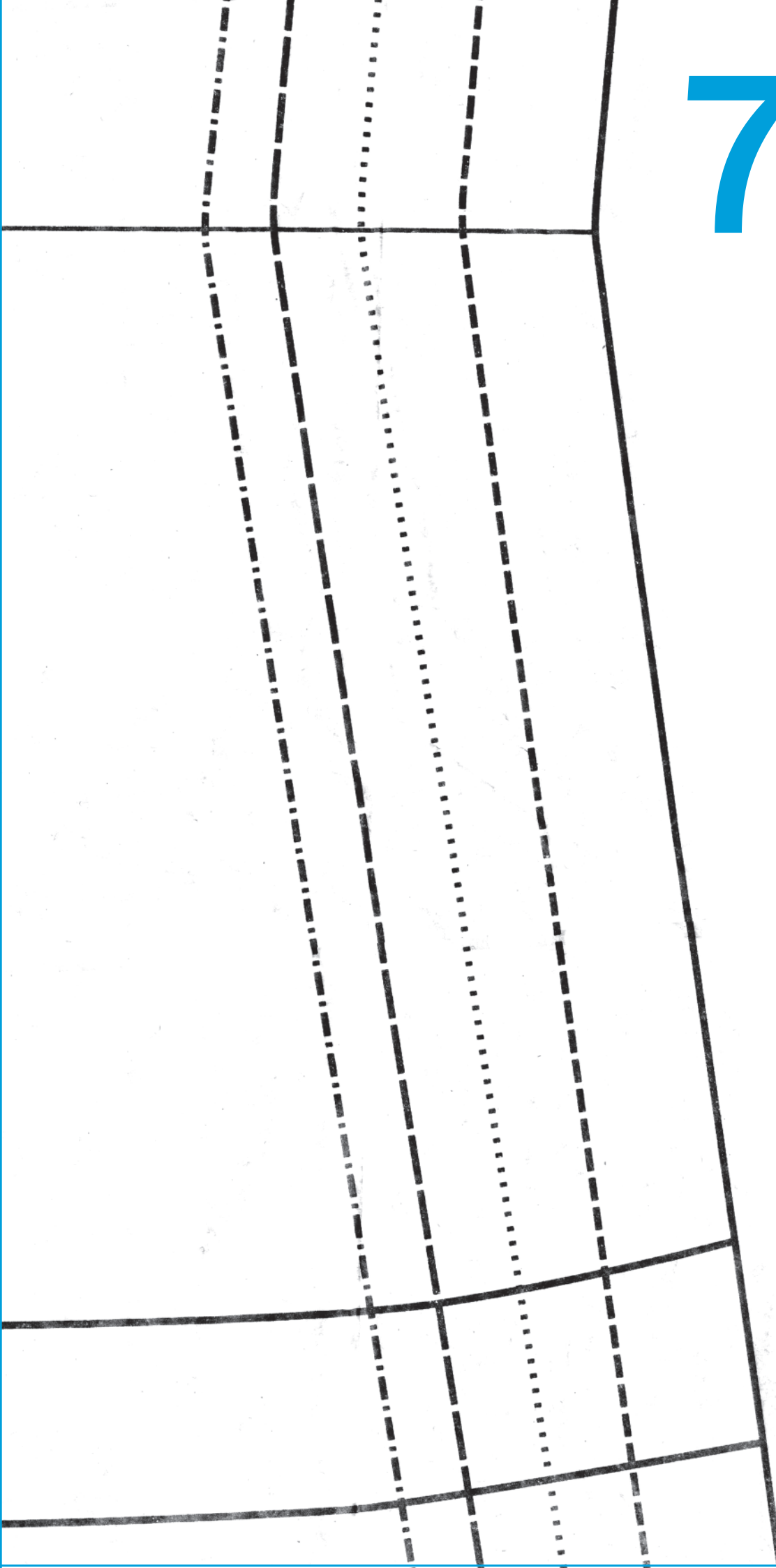
1" hem allowed

↑ Cutting line for the Cami Lining —↑

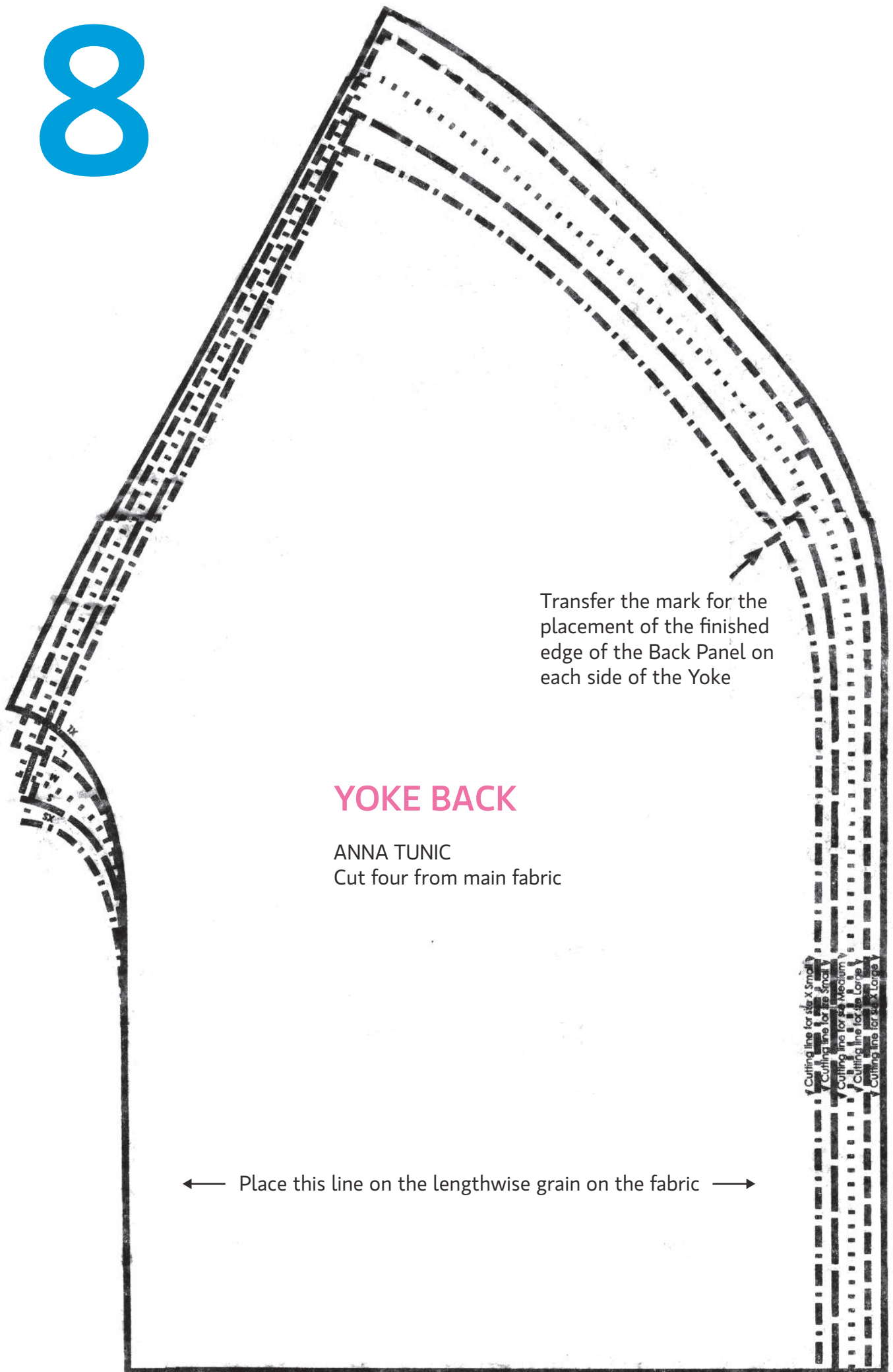
2" hem allowed

↑ Cutting line for the Cami —↑

7



8



Transfer the mark for the placement of the finished edge of the Back Panel on each side of the Yoke

YOKE BACK

ANNA TUNIC
Cut four from main fabric

← Place this line on the lengthwise grain on the fabric →

Cutting line for size X Small
Cutting line for size Small
Cutting line for size Medium
Cutting line for size Large
Cutting line for size X-Large

9

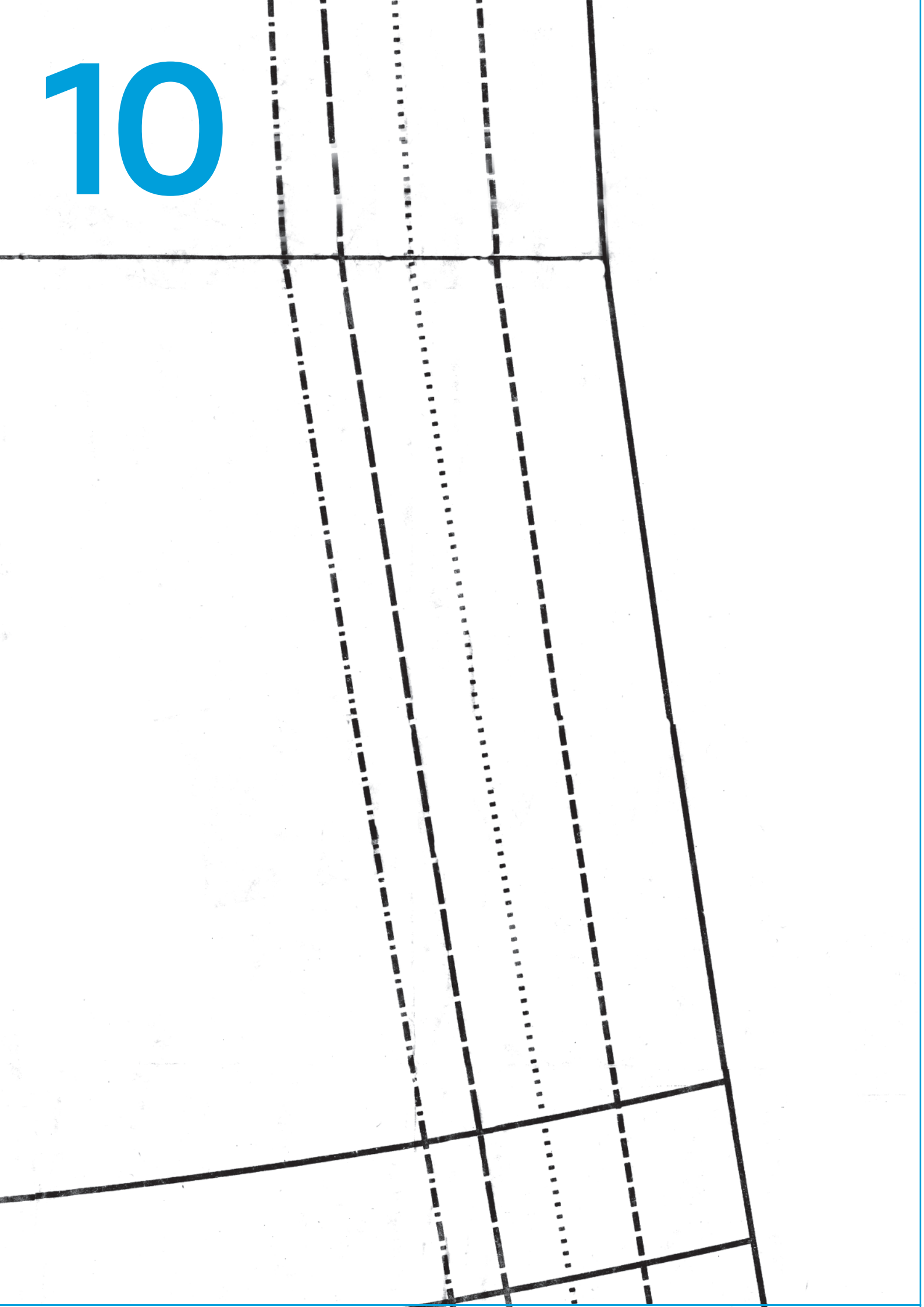
Waistline – Shorten or lengthen here

↑ Place this edge on the fold of the fabric →

1" hem allowed

↑ Cutting line for the Cami Lining →

10



1" hem allowed

↑ Cutting line for the Tunic Lining —↑

2" hem allowed

↑ Cutting line for the Tunic —↑

11

← Place this line on the lengthwise grain on the fabric →

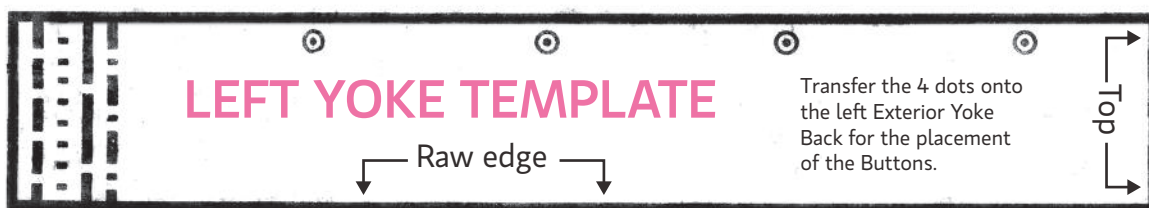


12

CORSAGE FLOWER STRIP

Cut four from fabric

XS - XL



XS - XL

13

Fold line

BELT

ANNA TUNIC
Cut two from fabric

2" hem allowed

↑ Cutting line for the Cami ↓

1" hem allowed

↑ Cutting line for the Tunic Lining ↓

2" hem allowed

↑ Cutting line for the Tunic ↓

14

Cutting line

BUTTON LOOP

Cut one from main fabric

Cutting line

Place this line on the
lengthwise grain on the fabric

Cutting line

↑ Cutting line for size Medium ↓

↑ Cutting line for size Small ↓

↑ Cutting line for size X Small ↓

15

CORSAGE BASE

Cut one from felt

Cutting line for size X Large

Cutting line for size Large