

motifs & templates

CUT OUT AND KEEP!

Download and print all of the motifs for free at www.sewmag.co.uk

Use these guides to get started today!

Make sure to keep these sewing essentials in your stash for quick and easy use.

IRON: For neatening and pressing pattern pieces and fabric.

NEEDLES: A selection of hand and machine options.

PINS & PINCUSHION: A mixture of dressmaker's

pins (long thin sharps), glass top (mid-length, will not melt when pressed), and safety pins for securing templates and pattern pieces to fabric.

RULER: For measuring smaller items.

SCISSORS: Dressmaking (sharp, large blades for cutting fabric), pinking

shears (sawtoothed blades used to neaten and secure the raw edges of fabric) and embroidery (small, pointed blades for trimming threads).

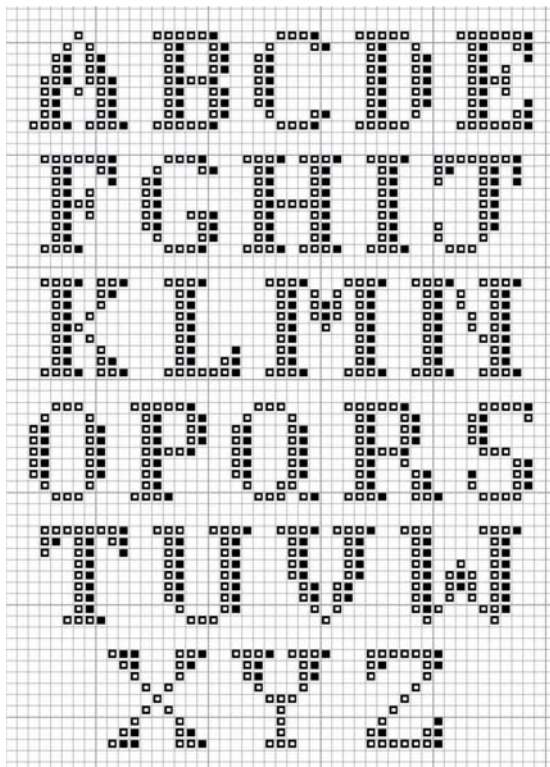
SEAM RIPPER: A sharp-ended hook for pulling and undoing unwanted stitches, and opening buttonholes.

TAILOR'S CHALK: Removable chalks for

marking patterns and templates onto fabric.

TAPE MEASURE: At least 150cm long for dressmaking.

THREADS: A variety of cotton, nylon and silk threads for use in hand and machine stitching.

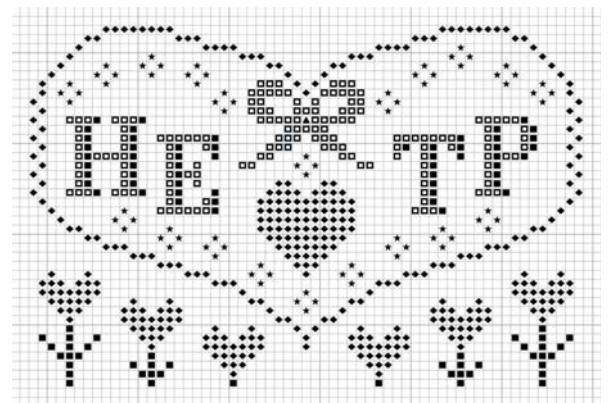
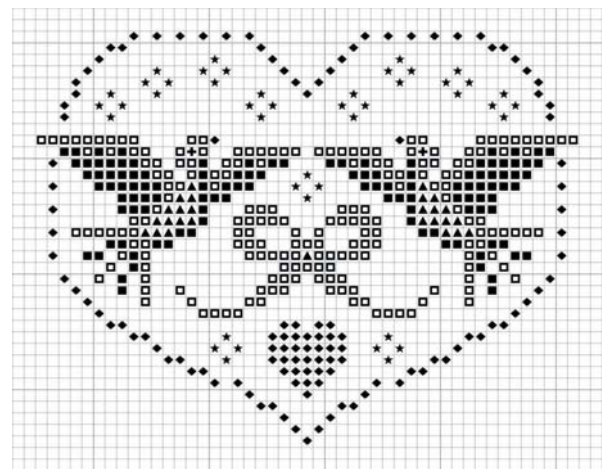


Title: Cross-stitched wedding gifts

Designer: Susie Johns

Page: 66

Whether you're commemorating your own big day or celebrating for a loved one, these pretty cross-stitched gifts from Susie Johns will be treasured for years to come. They're totally customisable to suit the happy couple, and can be worked up in no time as a last minute gift!



Three tips to remember!

1 Make sure you sit in good light. Staring at plain fabric or Aida trying to count the tiny stitches in front of you can be tricky – more so if you're not able to see your stitches clearly!

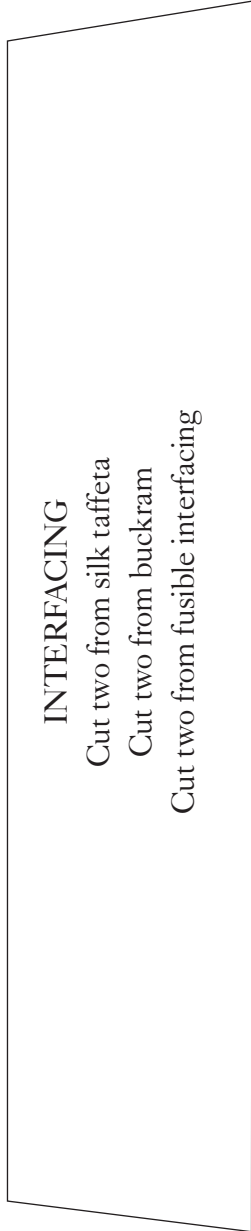
2 Use an embroidery hoop to hold your fabric taut and flat. This will allow you to create even, neat stitches.

3 Wrap unused thread around a bobbin – this will keep it neat, untangled and easy to store away for future use.



Title: Pastel accessories
Designer: Lisa Steed Davey
Page: 38
Templates are 50% of the original size

This vintage-style purse and fascinator will be perfect for any summer event, whether it's an outdoor wedding or a day at the races. Make it in colours to match your outfit – or follow our lead with soft sorbet pastels.

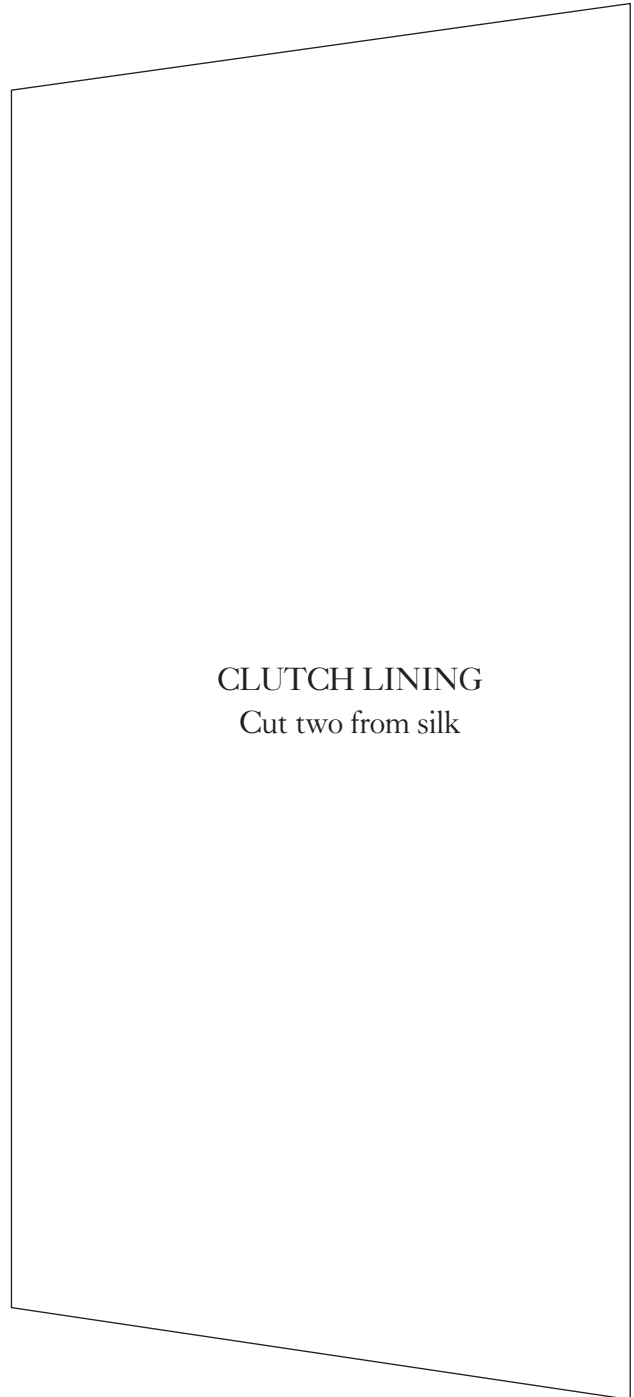


INTERFACING

Cut two from silk taffeta

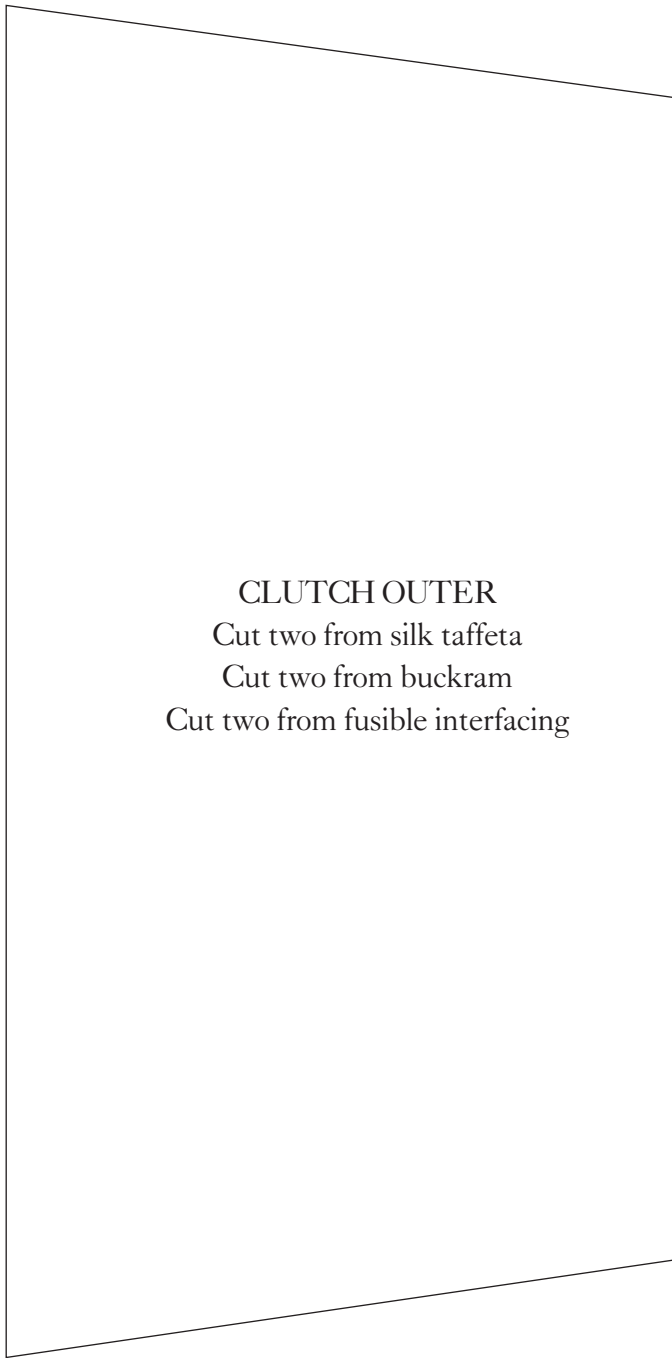
Cut two from buckram

Cut two from fusible interfacing

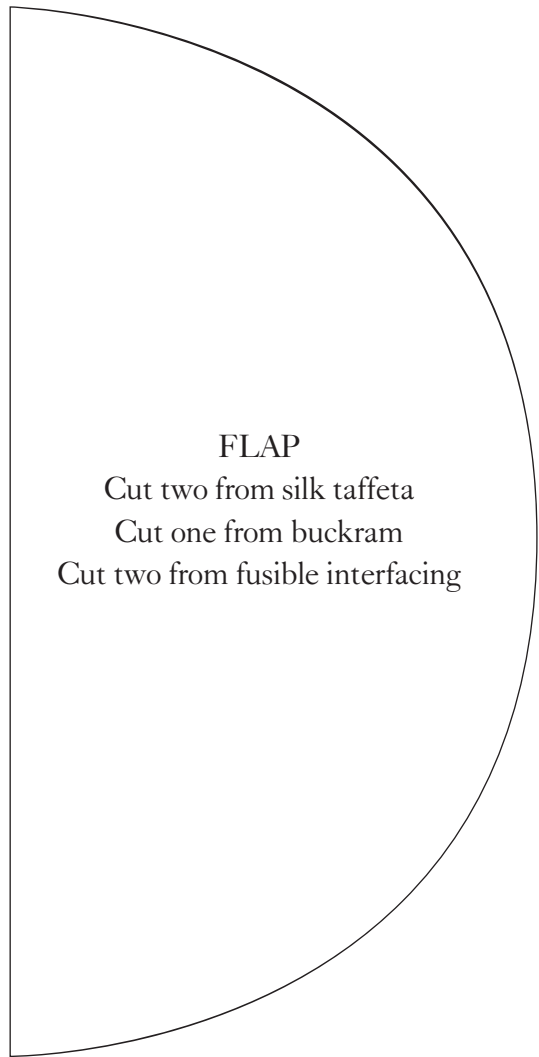


CLUTCH LINING

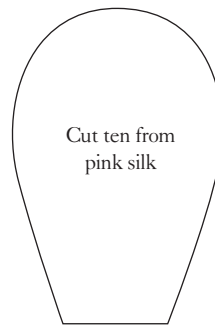
Cut two from silk



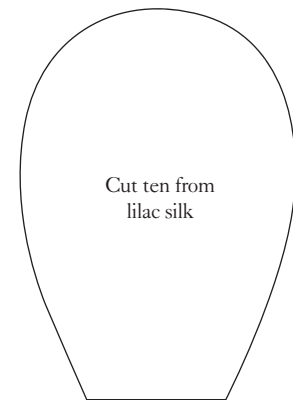
CLUTCH OUTER
 Cut two from silk taffeta
 Cut two from buckram
 Cut two from fusible interfacing



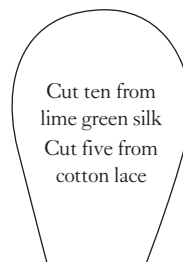
FLAP
 Cut two from silk taffeta
 Cut one from buckram
 Cut two from fusible interfacing



Cut ten from
pink silk



Cut ten from
lilac silk



Cut ten from
lime green silk
Cut five from
cotton lace



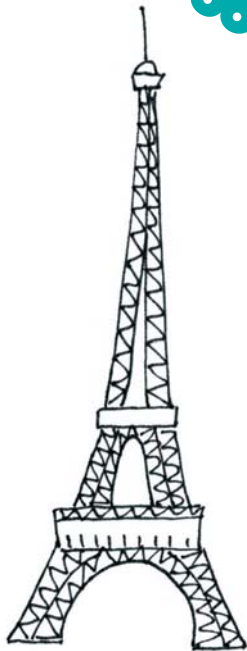
*Try your
hand at
millinery!*



Title: French photograph set
Designer: Carolyn Letten
Page: 42
Templates is full size

This motif will add a Parisian feel to any make. Create a fabric photo frame and album to keep your treasured pictures safe and on display.

Mini embroidery make



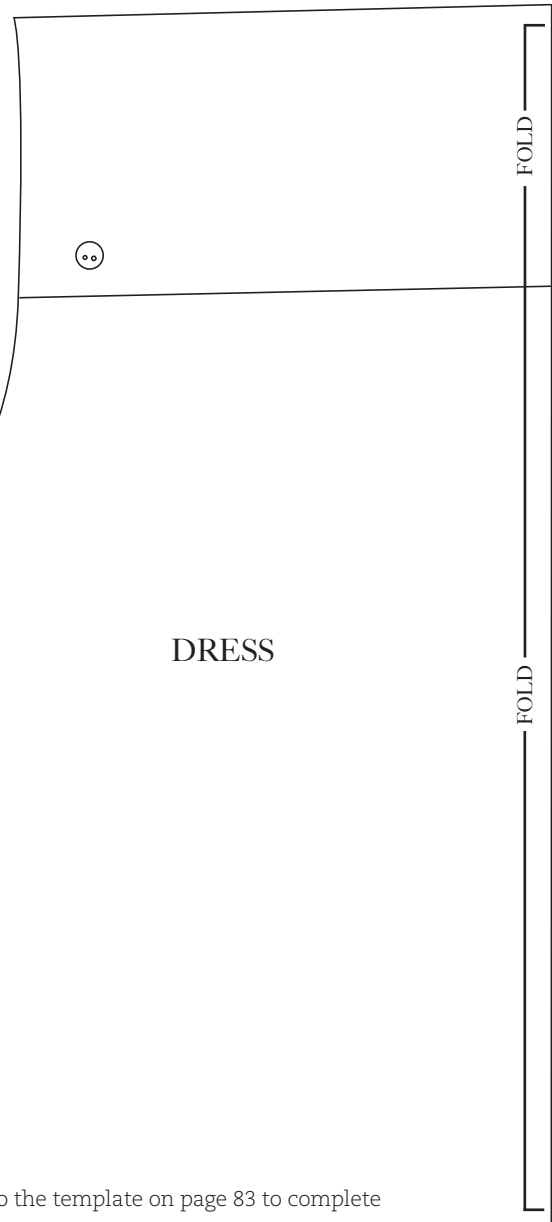
Cutting edge

Follow these simple rules to ensure that you get neat results and accurate edges when cutting your fabric. This will help the pattern pieces to fit together well when it comes to sewing the project together.

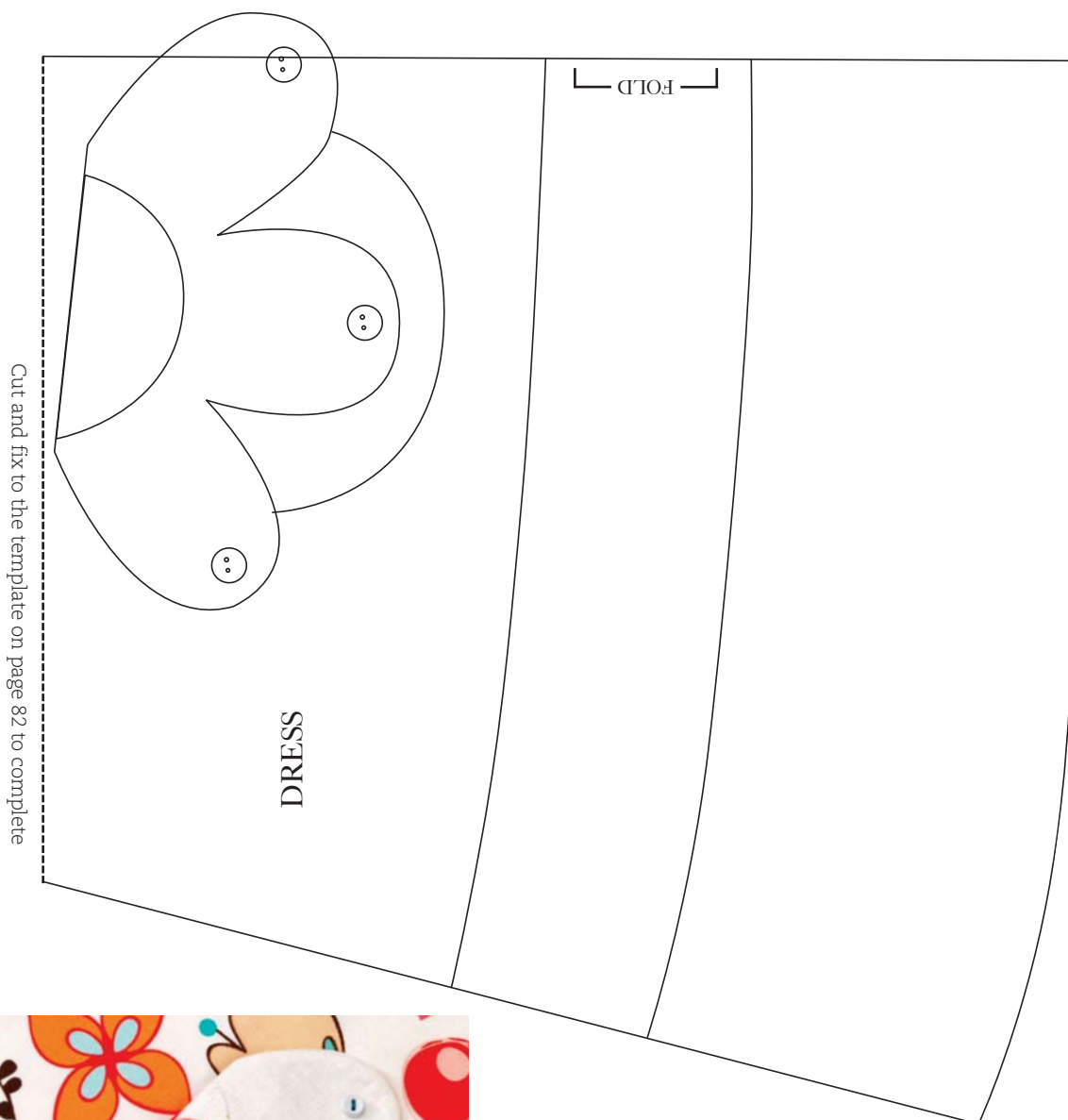
Always cut on a smooth, flat surface, such as a table. Ensure that your scissors are sharp – and never use the same pair for cutting both fabric and paper. Use the full blade of the scissors for longer straight edges, making smaller cuts around curves.

If you are right-handed, place your left hand onto the template and fabric and hold it securely. Holding the scissor blades at right angles to the fabric, begin cutting cleanly around each section.

Reverse the process if you're left-handed.



Cut and fix to the template on page 83 to complete



Fabric Preparation

- 1 It is advisable to launder your fabric before use in the same way as you would the finished project. This will ensure any dye running or shrinking occurs before you cut out the pieces.
- 2 Once laundered, press the fabric with a warm iron to neaten, ready for pinning.
- 3 We advise laying your fabric right sides up, so that you can choose how to place the pieces to accommodate any motif.

Title: Summer dress
Designer: Louise Nichols
Page: 28
 Template is 60% of the original size (age 4-5)

This cute cotton dress is ideal for the summer months – whether your little one is running around on the beach or playing in the park, she'll feel cool and comfy all day long. Mix and match prints and solids for a quirky look.





Title: Embroidered beach bag

Designer: Elisabeth Cockrell

Page: 54

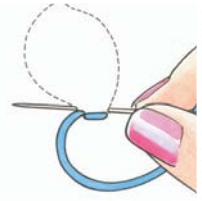
Template is 40% of the original size

Fold-away tote bags needn't be dull – as this fantastic embroidered design shows! Worked in brightly-coloured threads, this motif could be created with a variety of different stitches to give extra texture to the work. Why not try a new technique?

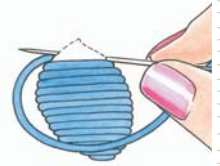
Change the colour scheme to suit your bag!



How to... Satin Stitch



1 Start by securing the thread on the wrong side of the work. Pull the needle through to the surface on the base of the outline to be filled. Take the needle to the outline on the opposite side and push it back through to form a long, straight stitch.



2 Take the needle down next to the end of the work, bringing it back through at the start of the previous stitch forming a parallel line of thread. Repeat this process until the desired area is filled.

Title: Travel set

Designer: Lisa Steed Davey

Page: 52

Template is 50% of the original size

This stylish travel wallet and luggage tag set is ideal for taking with you on your travels. Lined with layers of interfacing, the wallet is strong enough to protect all of your essential documents – and the tag will help identify your cases on the carousel. Create them in a vibrant print to make them even easier to spot.



LUGGAGE TAG
Cut two from fabric
Cut two from fusible interfacing

What is interfacing?

This set uses layers of interfacing to not only give the pieces shape and structure, but protect the contents too. Interfacing is simply an additional layer of material which can be sewn in, or alternatively glued by a thin layer of heat-activated glue. Simply iron the interfacing to the fabric to stick them together.

Collect & Keep Cross Stitch Library

Whether it's a gift to a **betroted loved one** or as a **keepsake** for your own big day, these **wedding-themed motifs** will make the perfect **crafty finishing touch** to any **wedding!**

