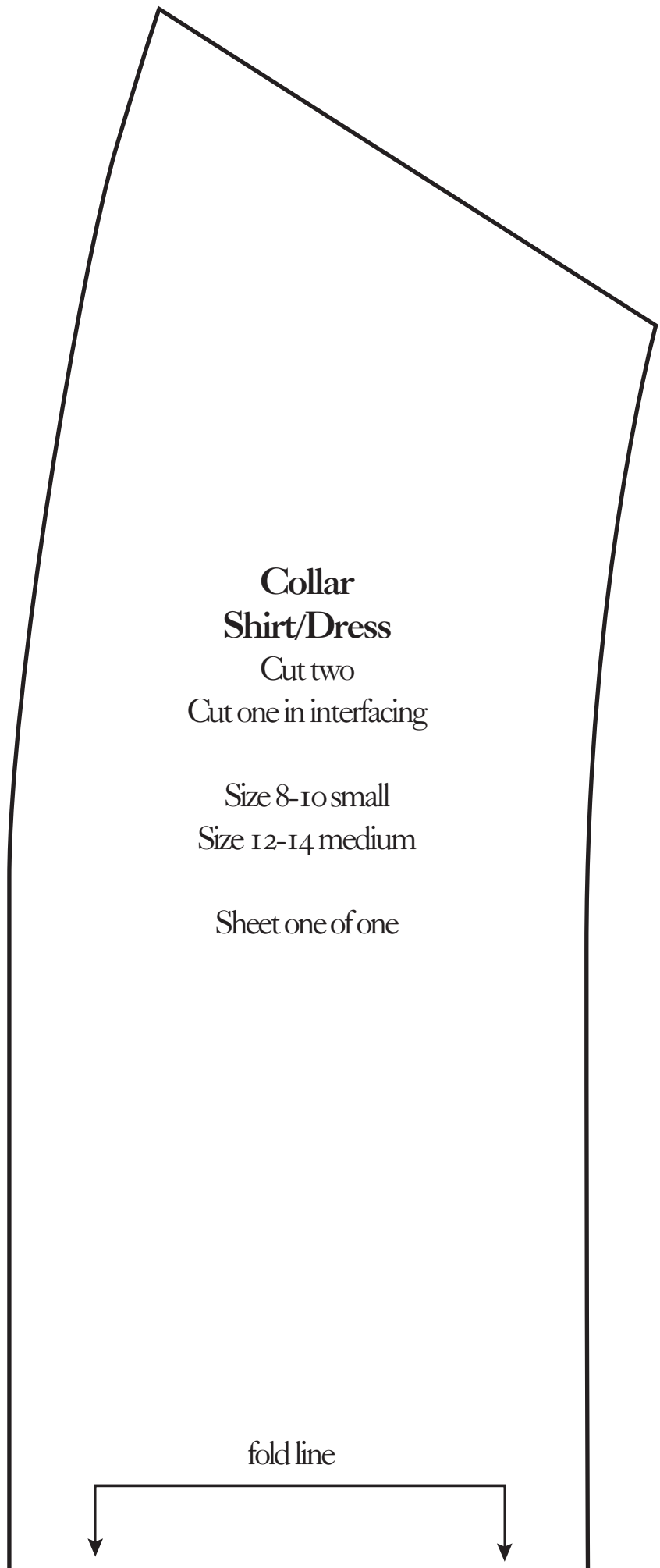


Liberty Print Blouse



Amanda Walker
Page 15



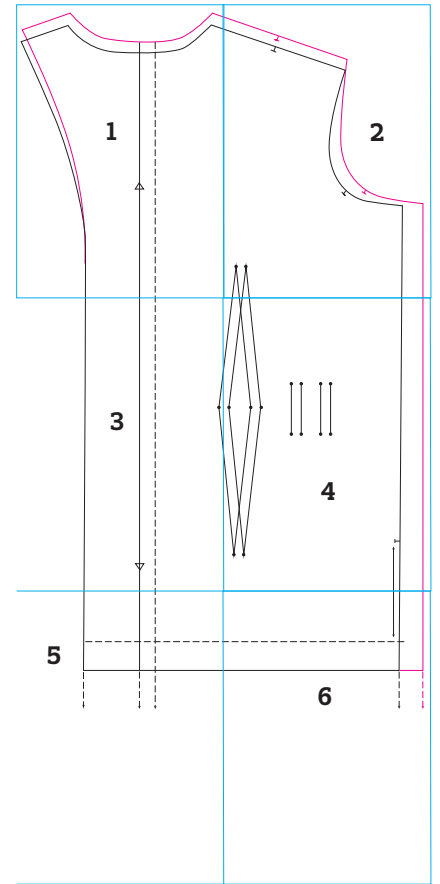
Front Facing
Cut one pair in interfacing

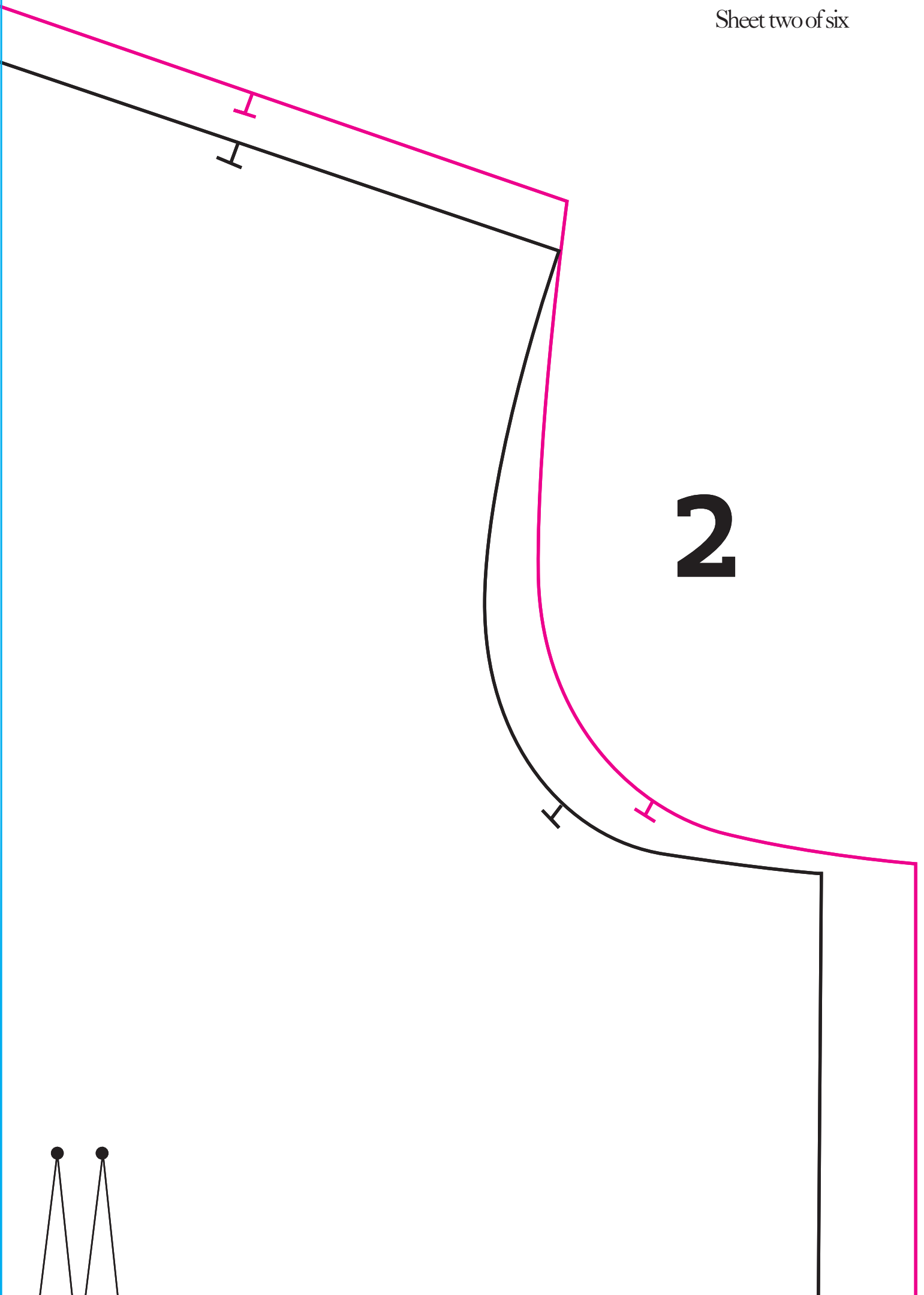
1

Front
Shirt/Dress
Cut one pair

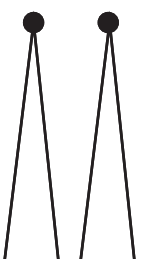
Size 8-10 small
Size 12-14 medium

Sheet one of six





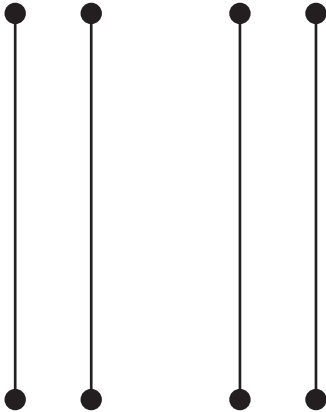
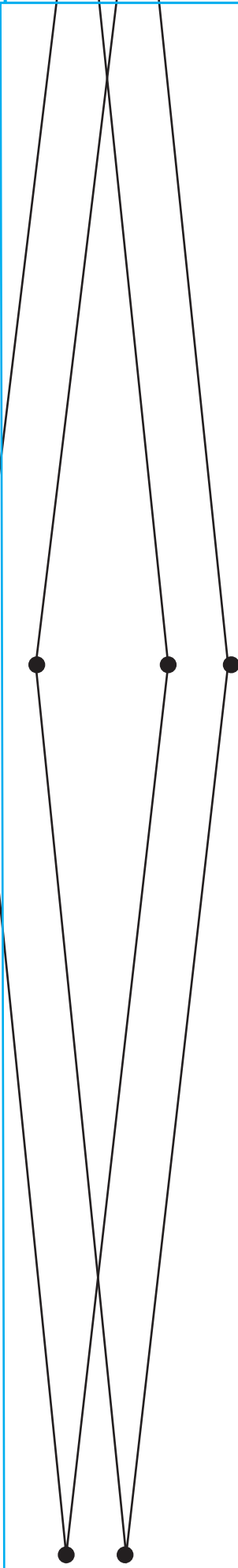
2



Fold line -- cut here for interfacing

3



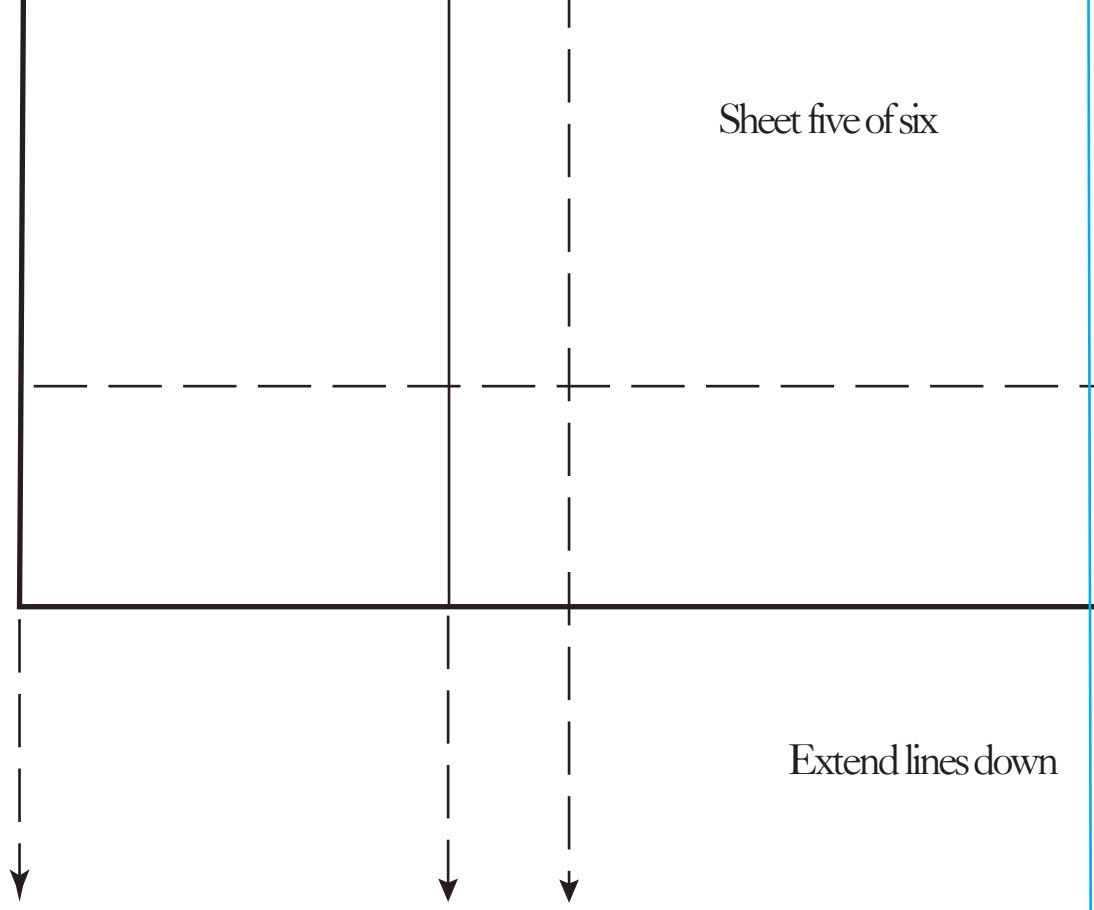


4



5

Sheet five of six

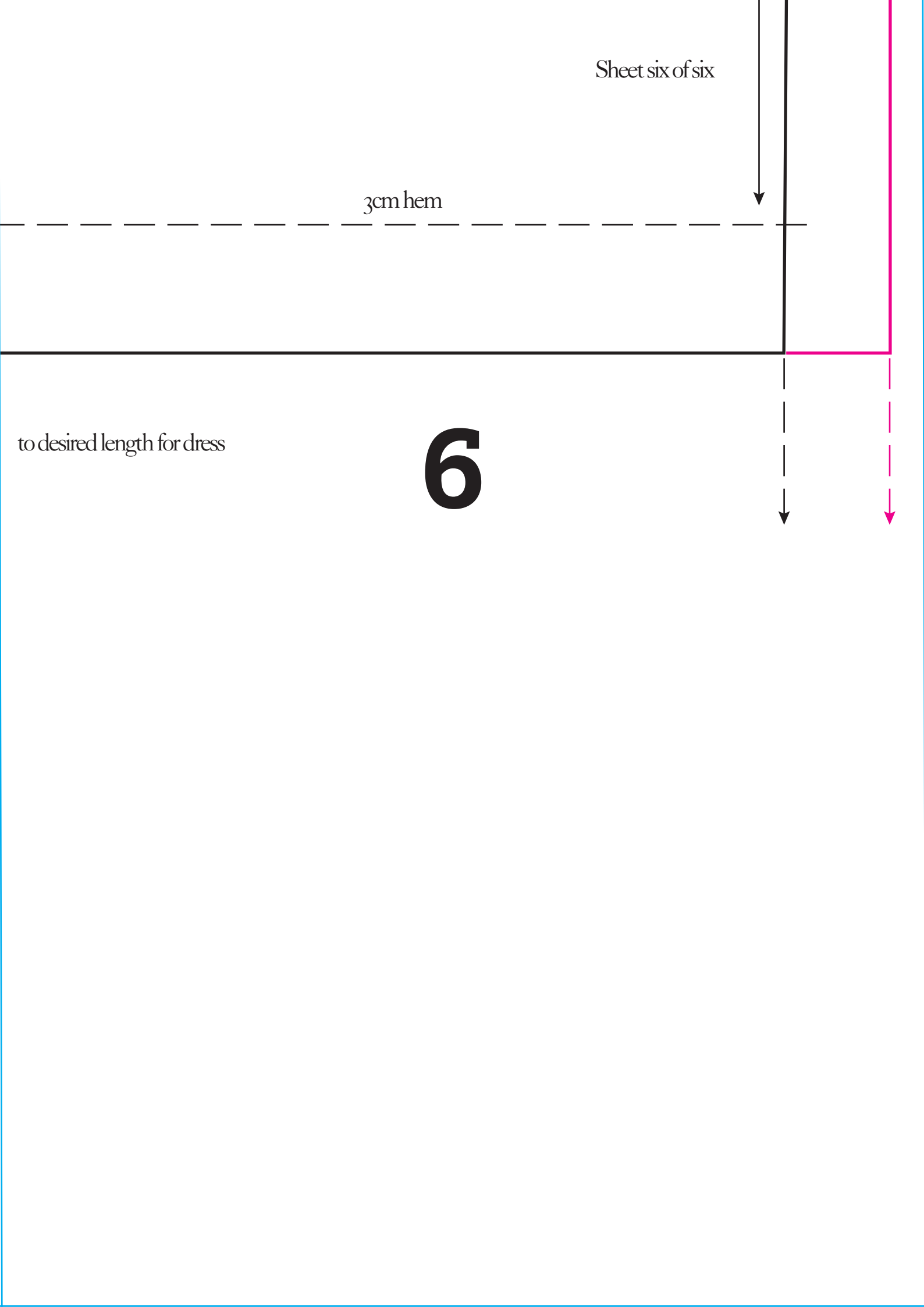


Extend lines down

3cm hem

to desired length for dress

6



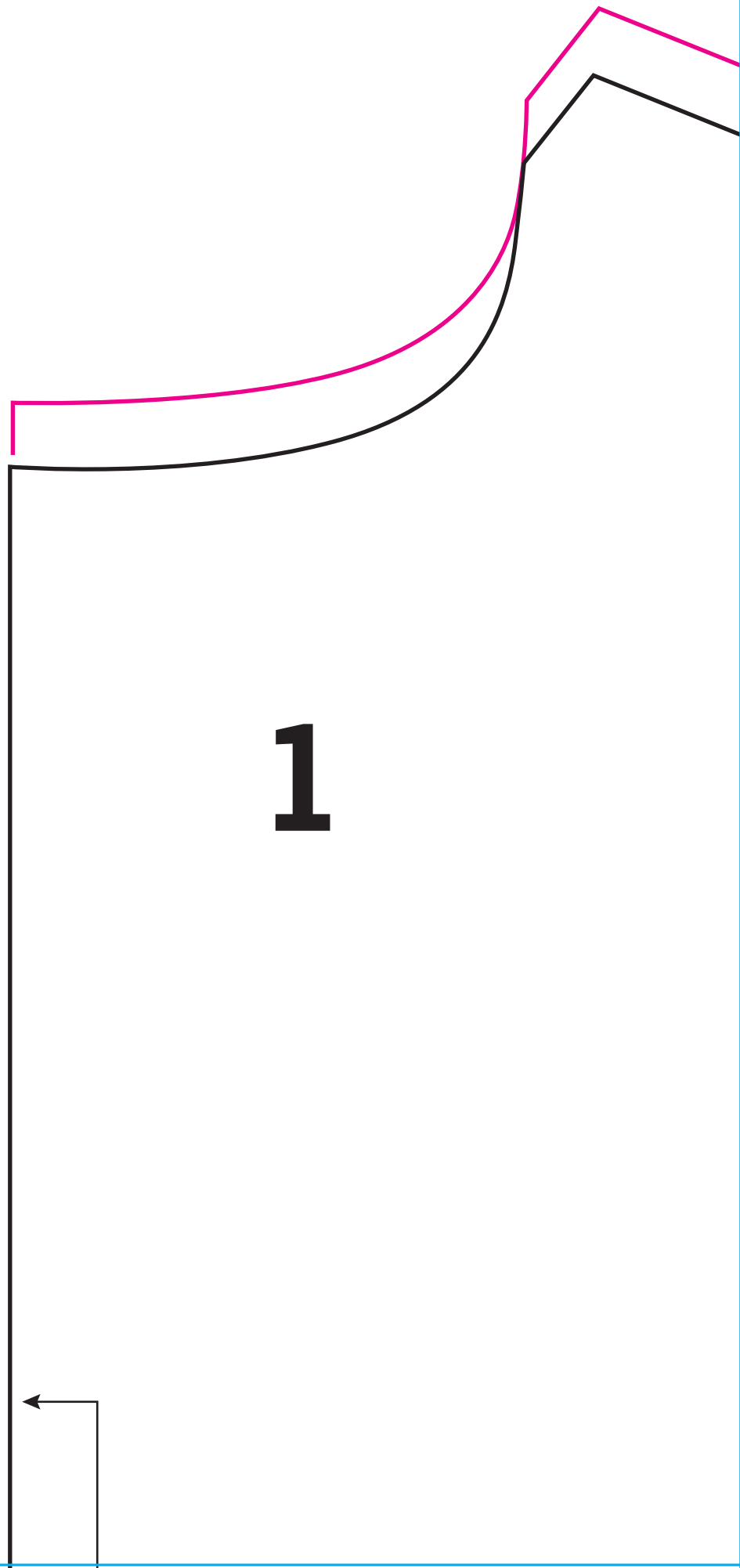
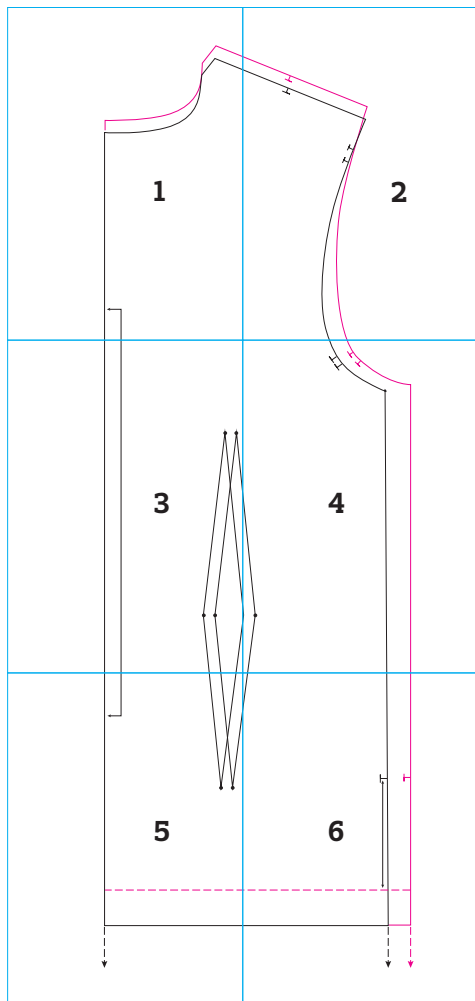
**Back
Shirt/Dress**

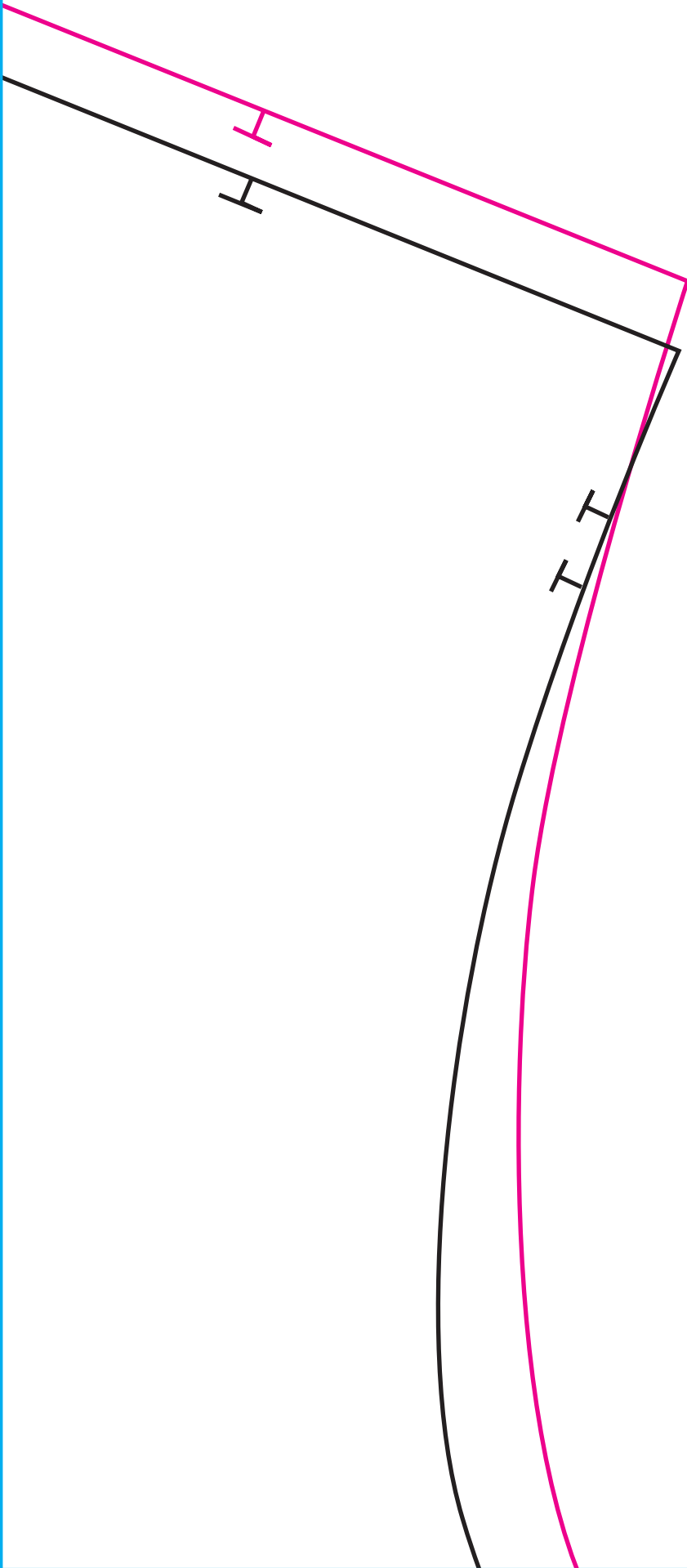
Cut one pair

Size 8-10 small

Size 12-14 medium

Sheet one of six

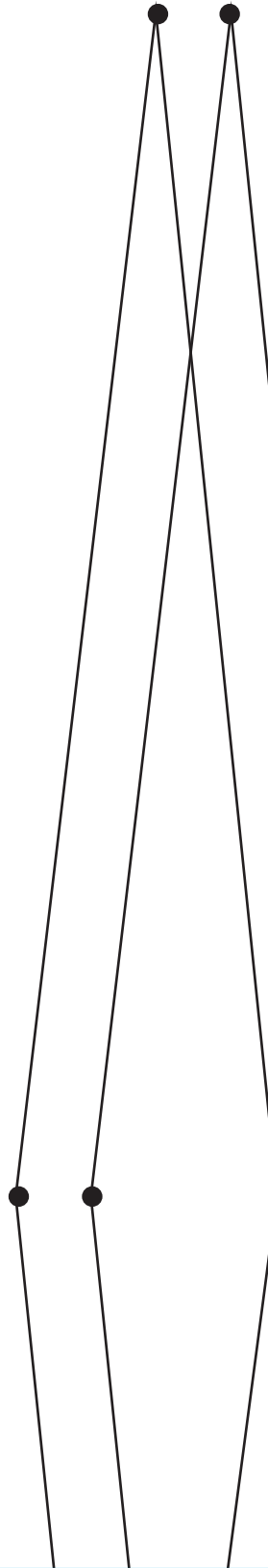


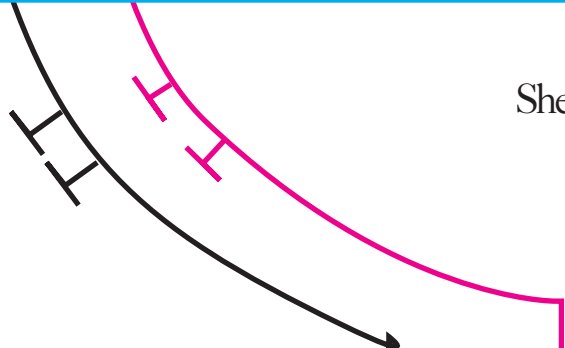


2

Fold

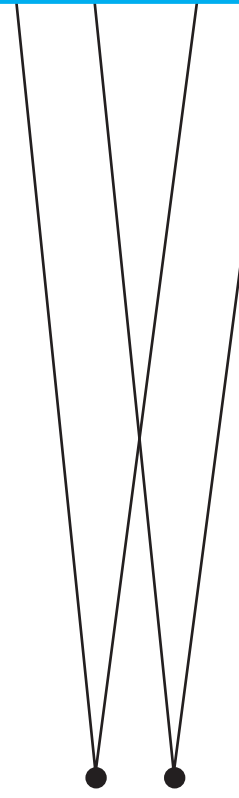
3





4





5



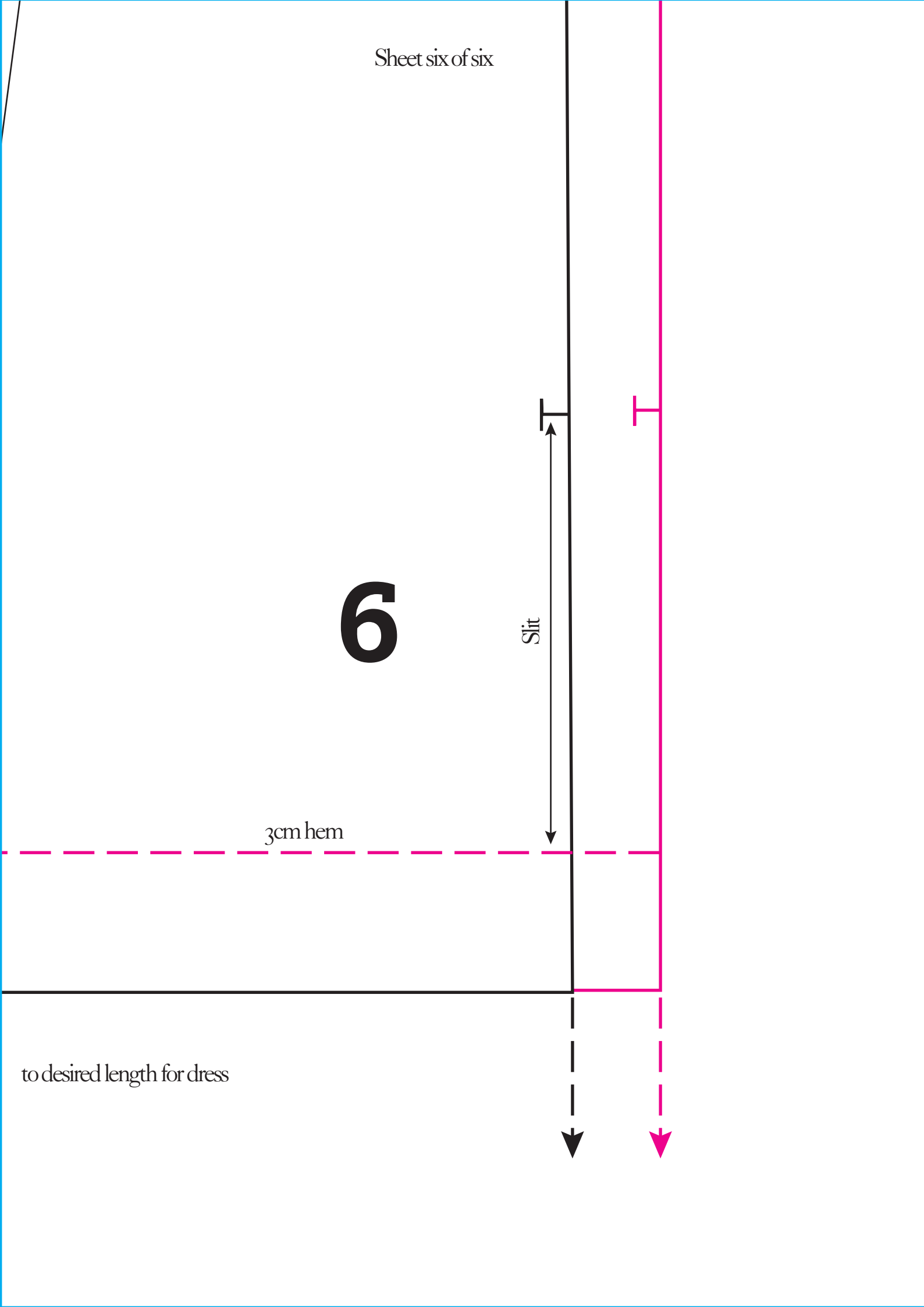
Extend lines down

6

3cm hem

Slit

to desired length for dress



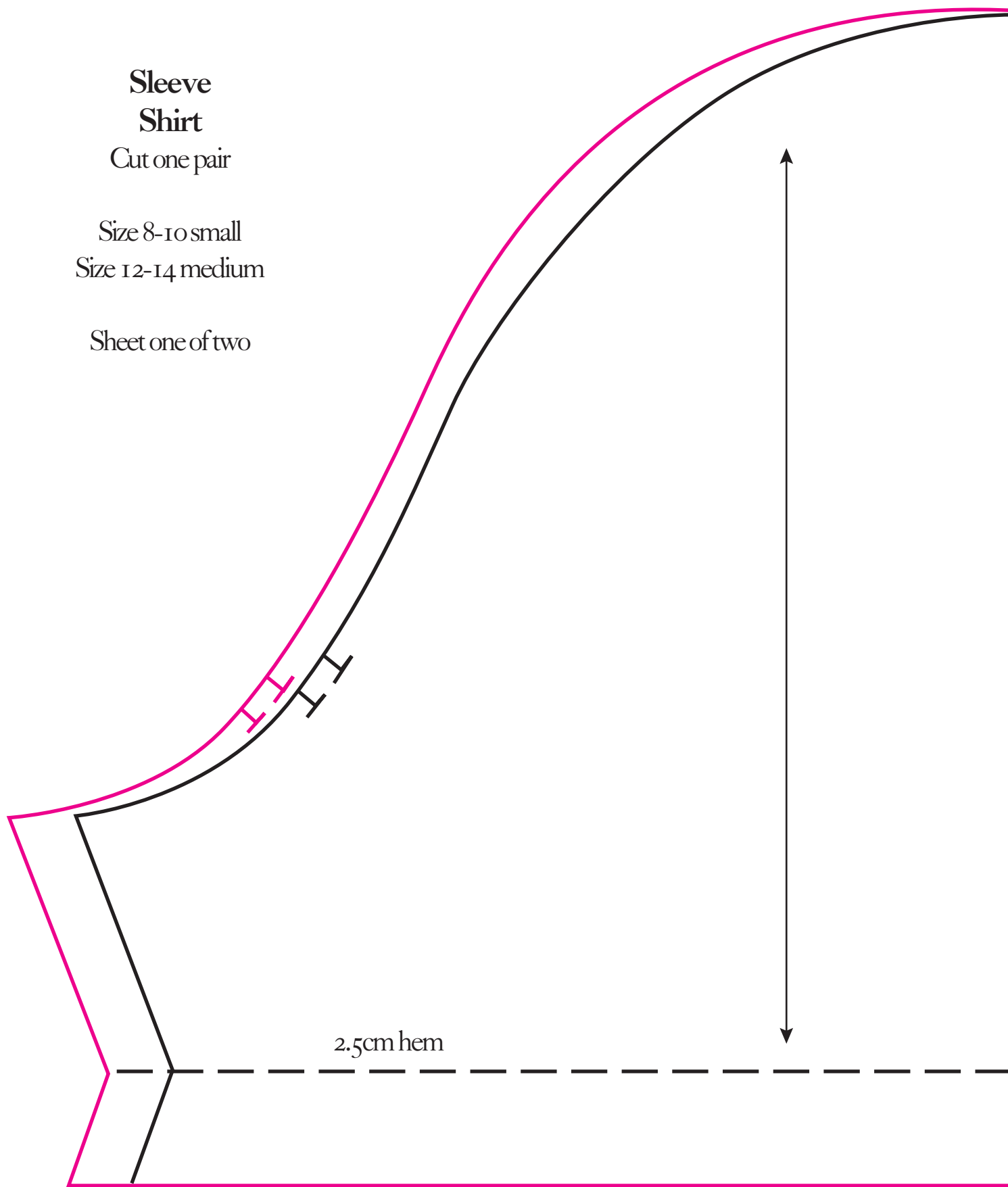
**Sleeve
Shirt**

Cut one pair

Size 8-10 small

Size 12-14 medium

Sheet one of two



2.5cm hem

