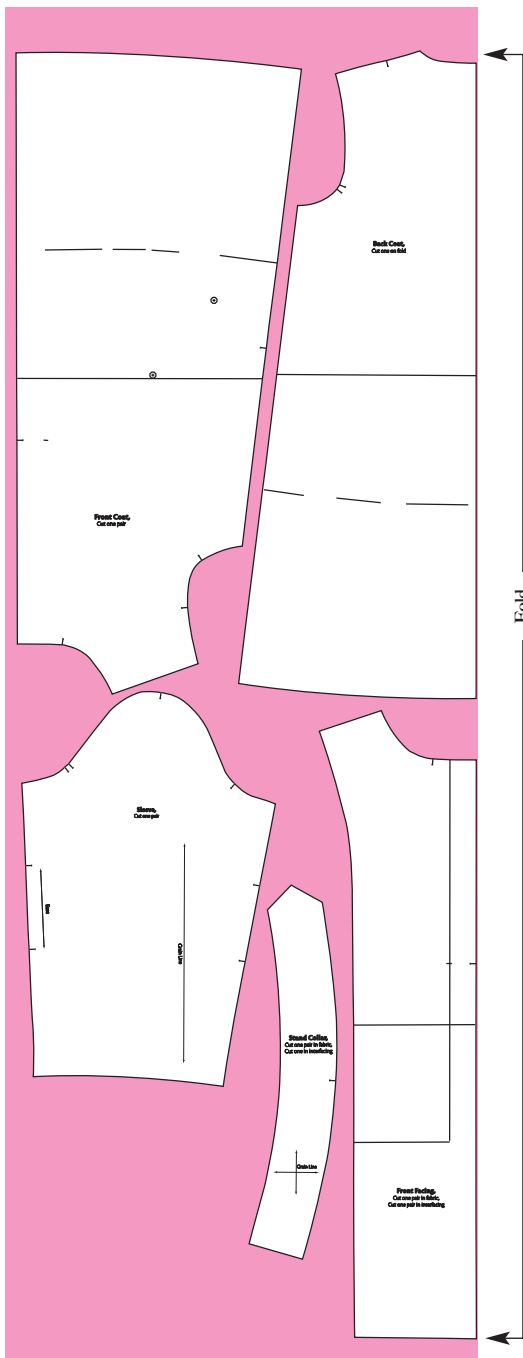


Amy Butler Raincoat



Fabric cutting guide, Mac

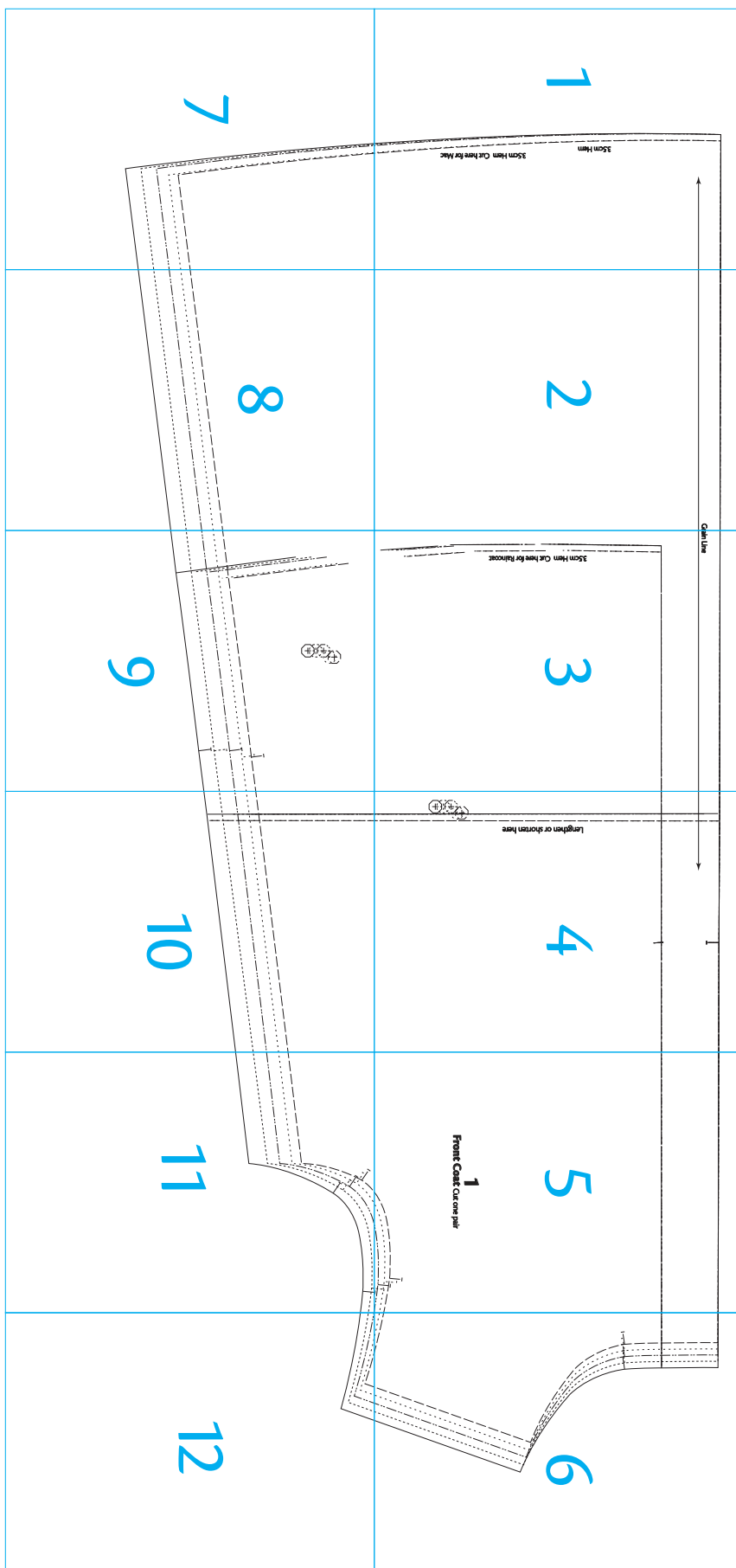


Fabric cutting guide, Raincoat



Front Coat

12 pages





3.5cm Hem

3.5cm Hem Cut here for Mac



2

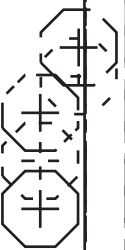
3

3.5cm Hem Cut here for Raincoat



4

Lengthen or shorten here

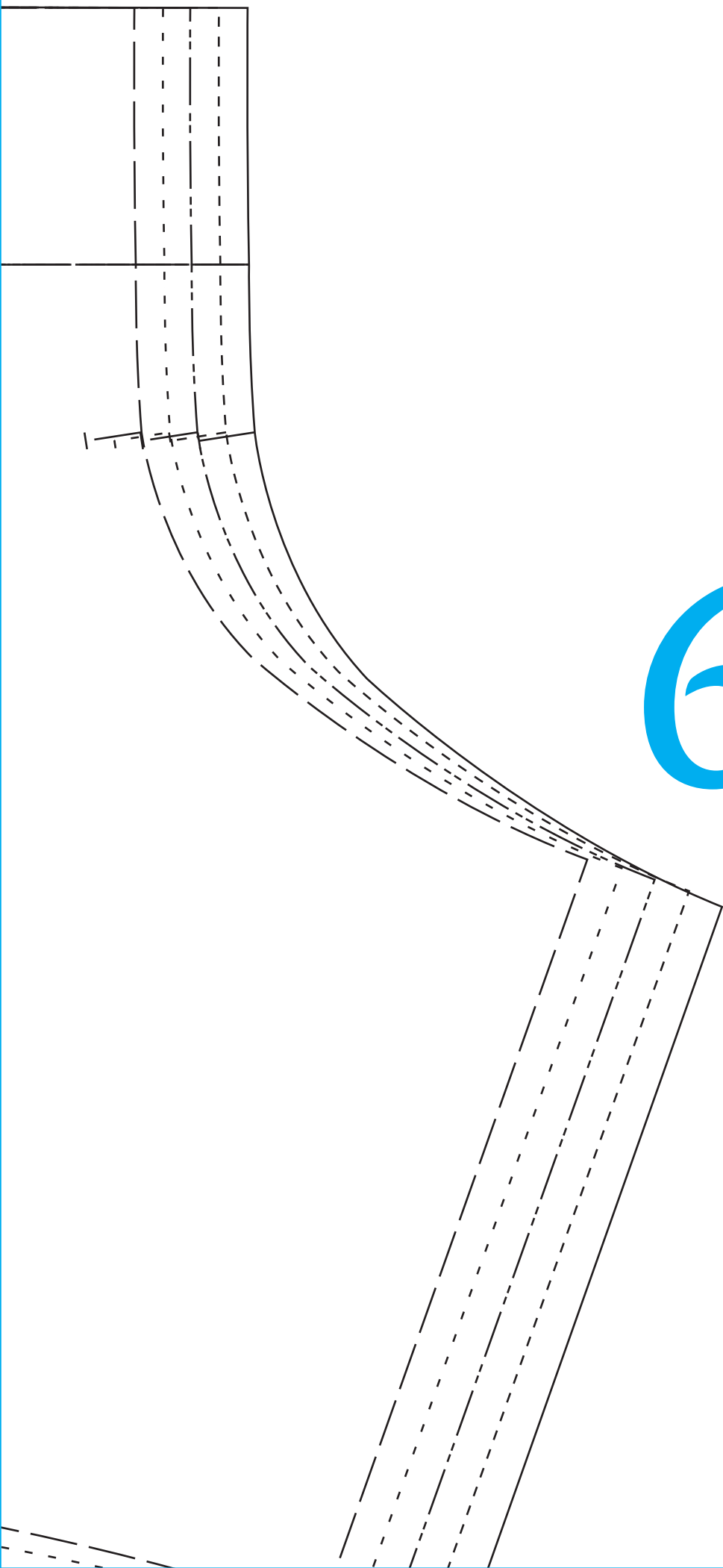


5

1

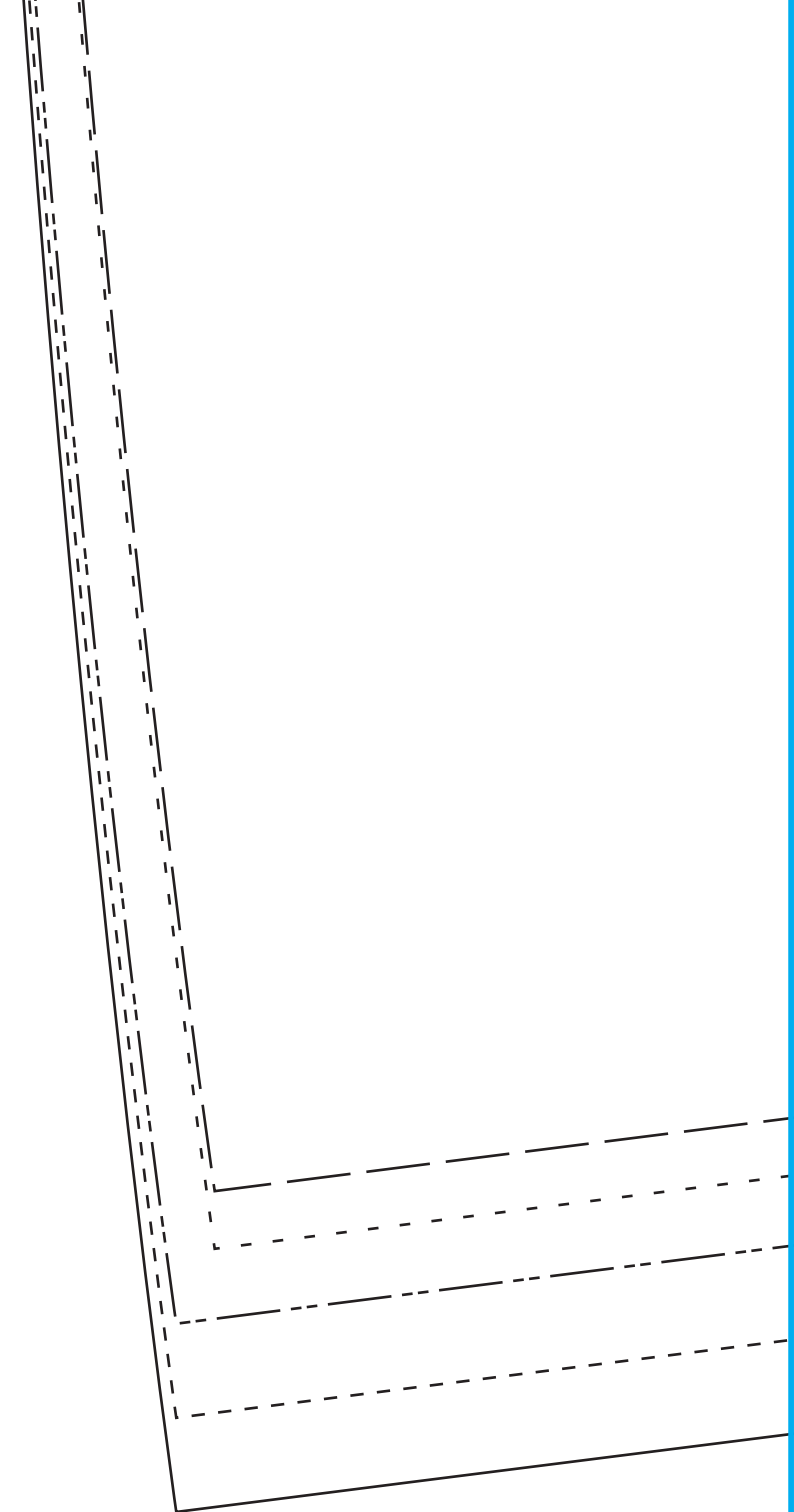
Front Coat Cut one pair



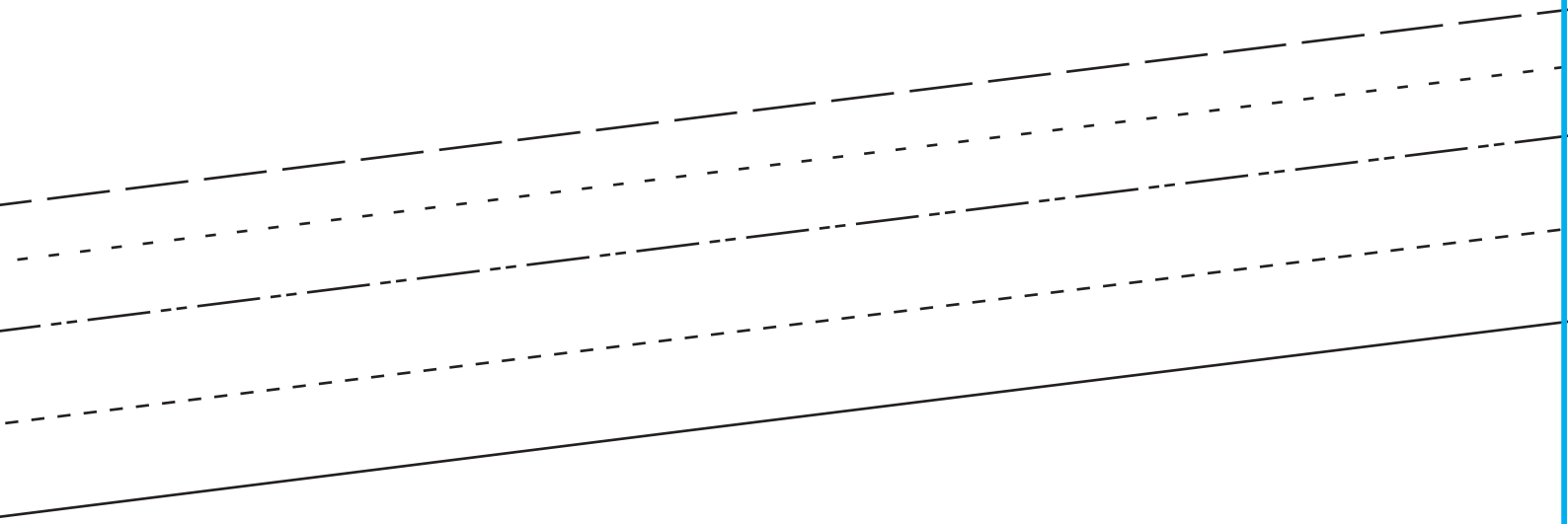


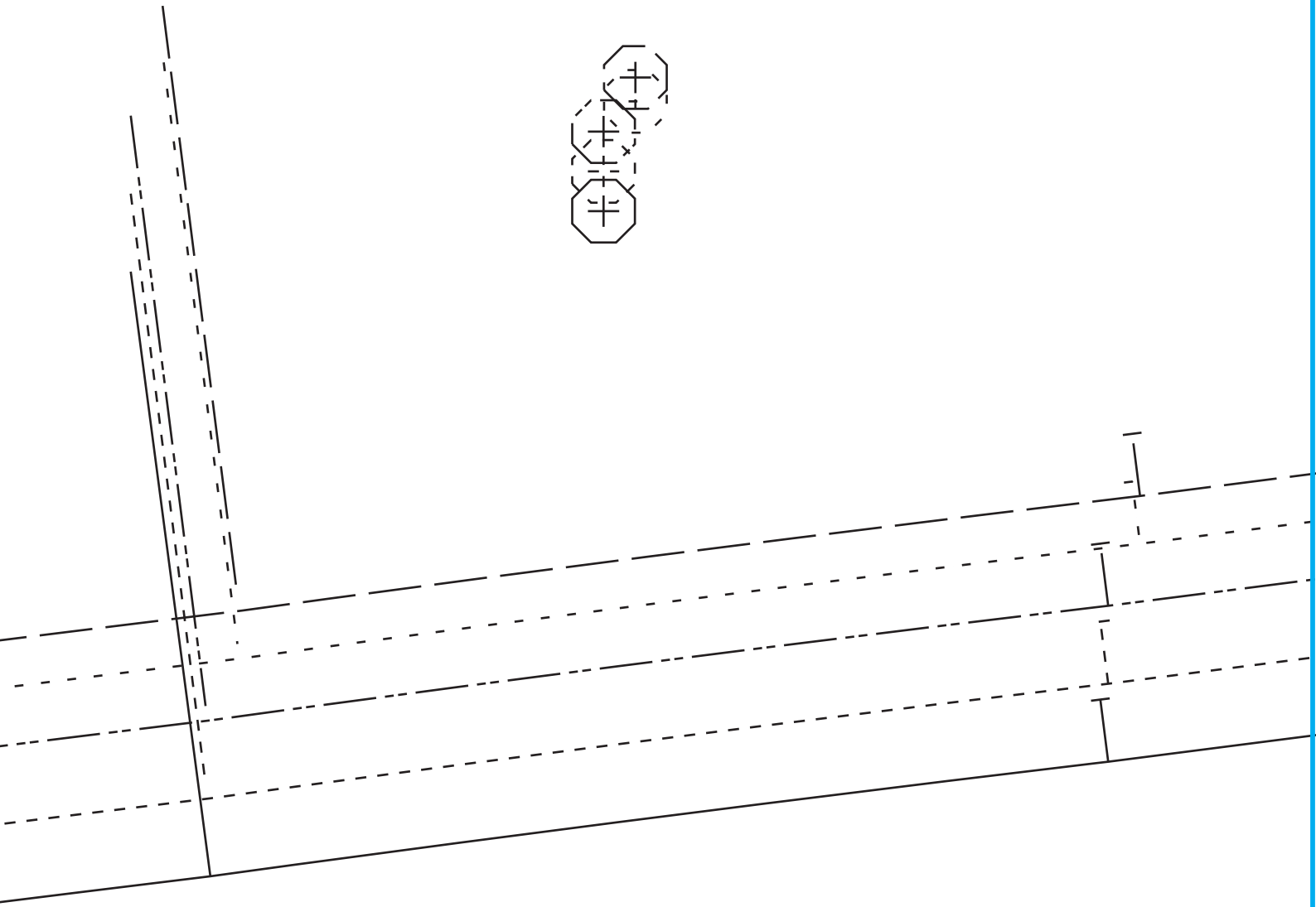
6

7



8

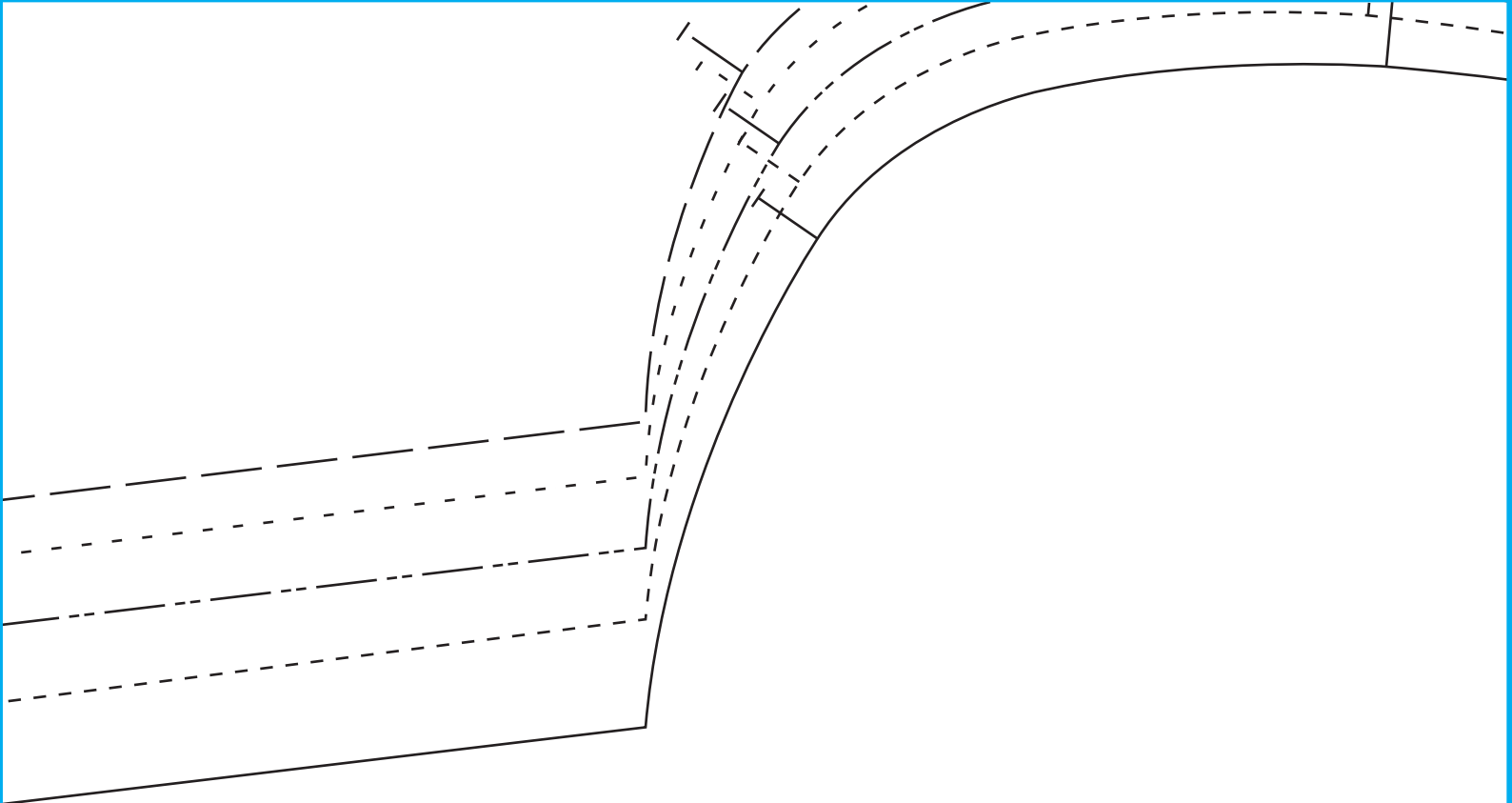




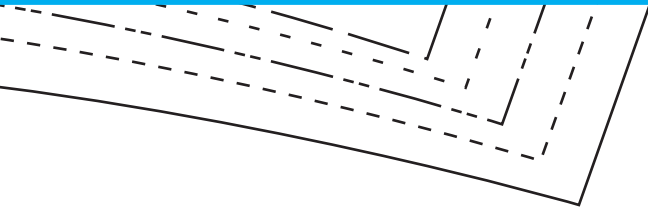
9

The top portion of the page features a handwriting practice area. It consists of a vertical solid line on the left, followed by a vertical dashed line. To the right of these are four horizontal lines that slope upwards from left to right: a solid top line, a dashed midline, a dashed baseline, and a solid bottom line.

10



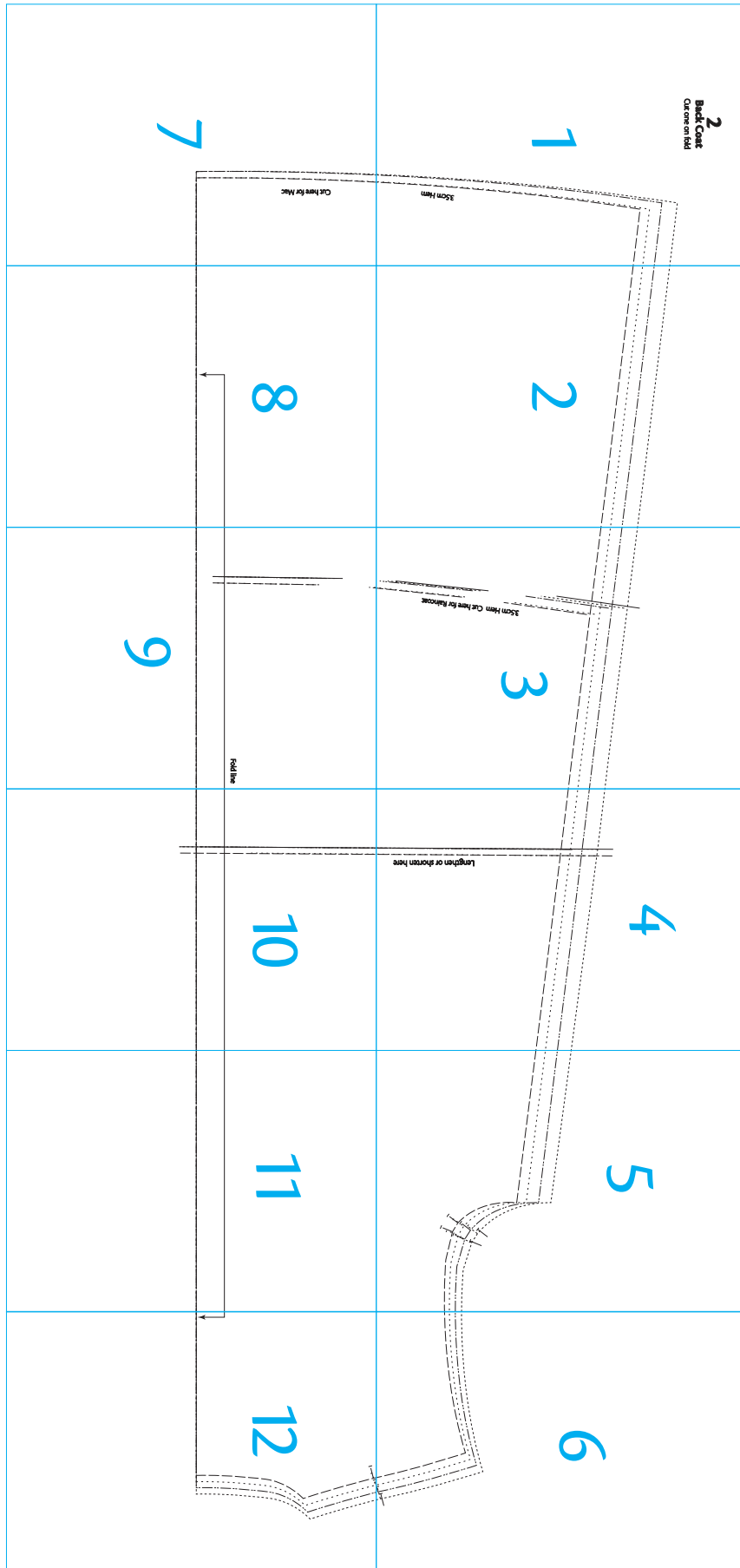
11



12

Back Coat

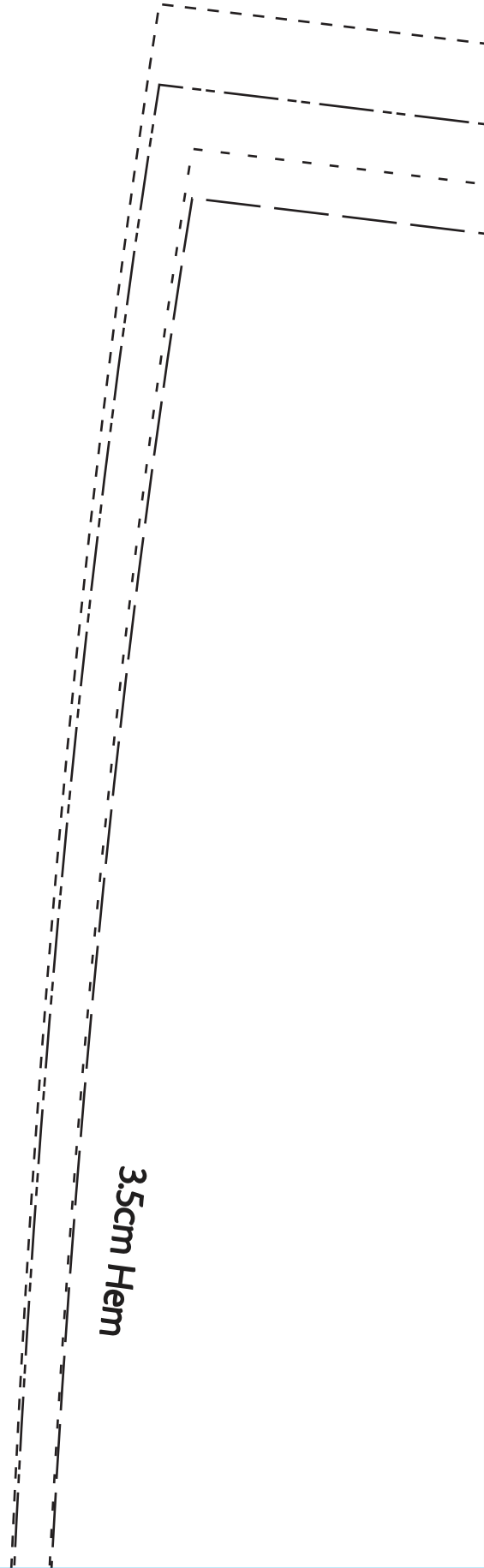
12 pages



2

Back Coat

Cut one on fold



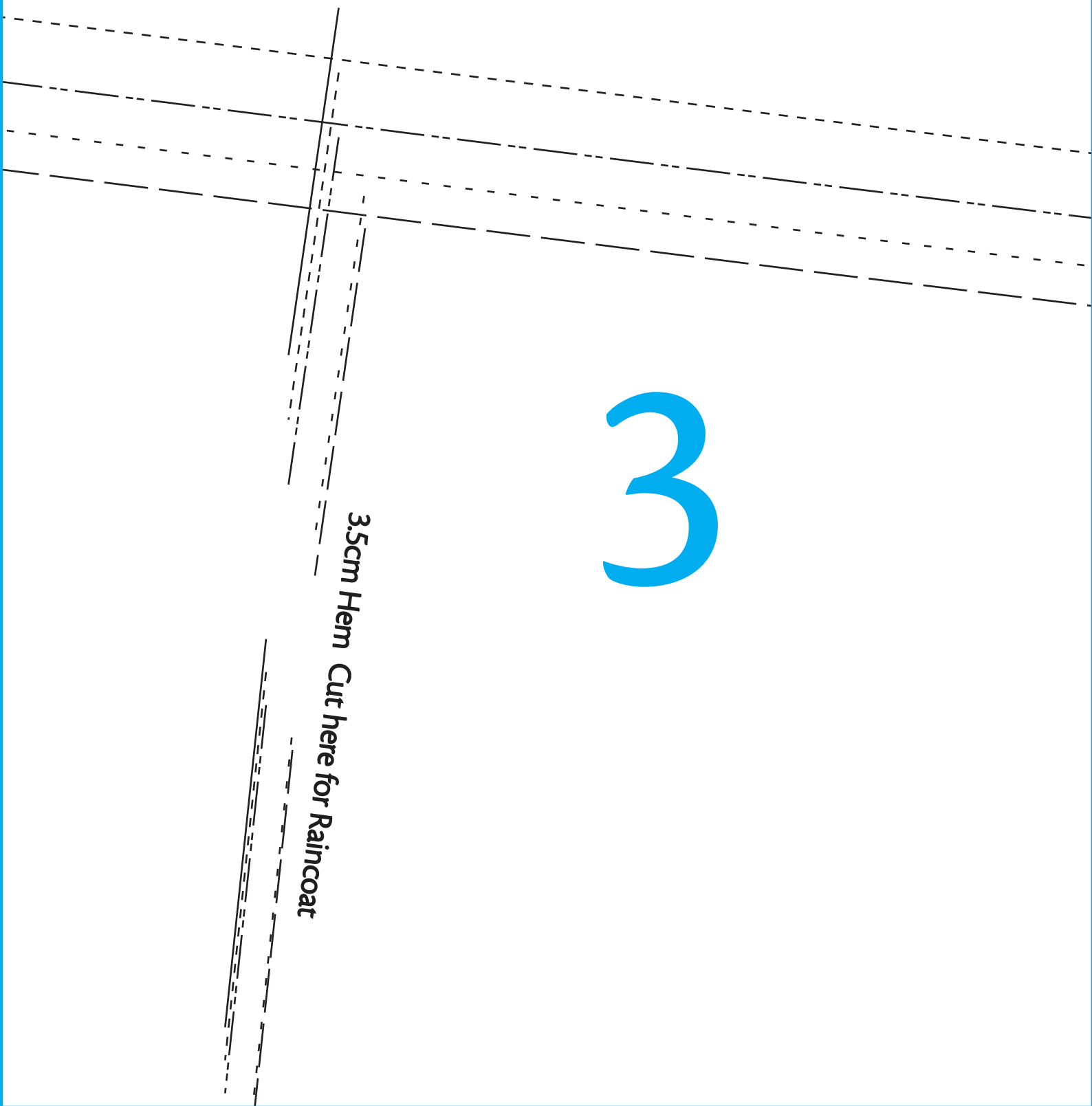
3.5cm Hem



2

3

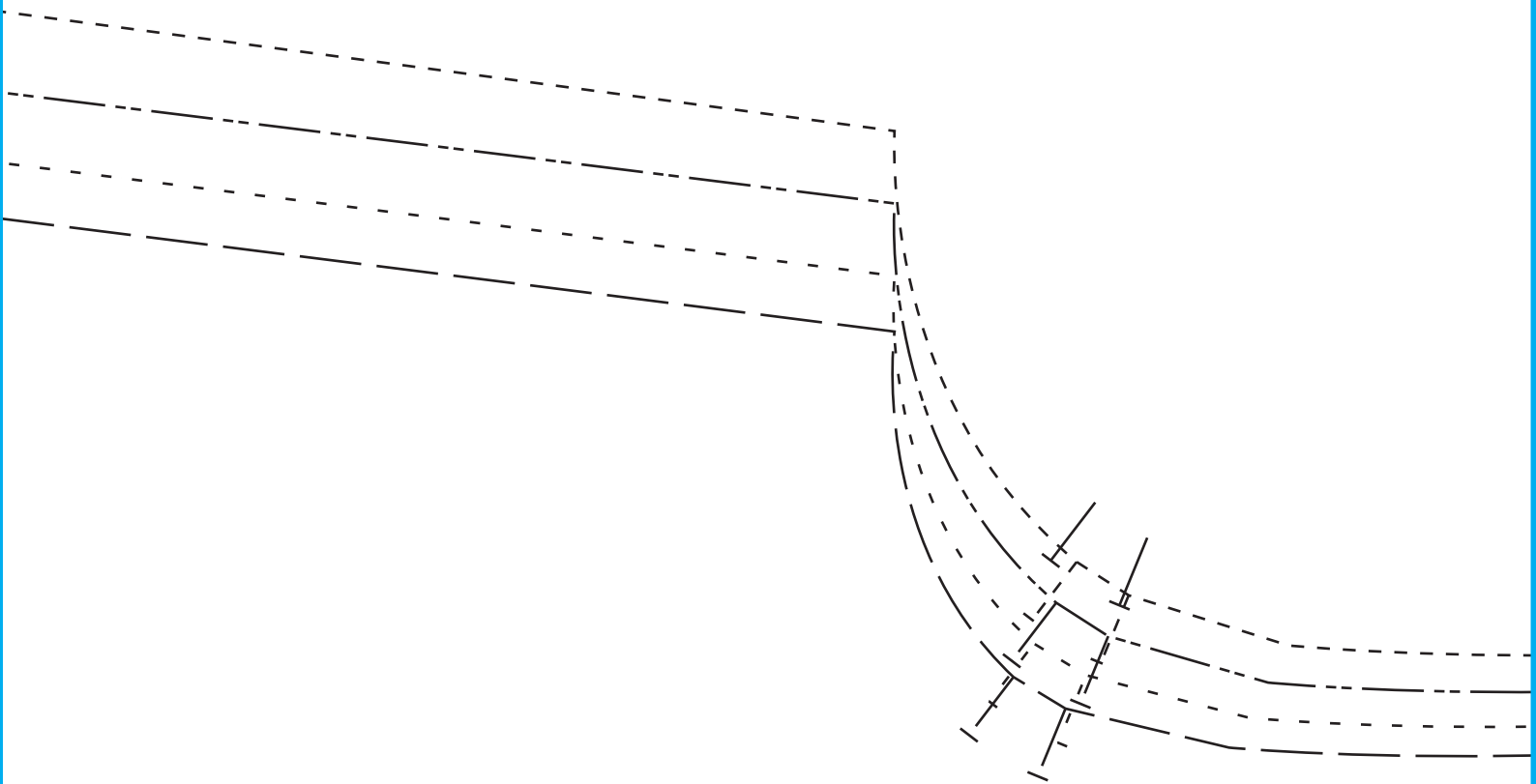
3.5cm Hem Cut here for Raincoat



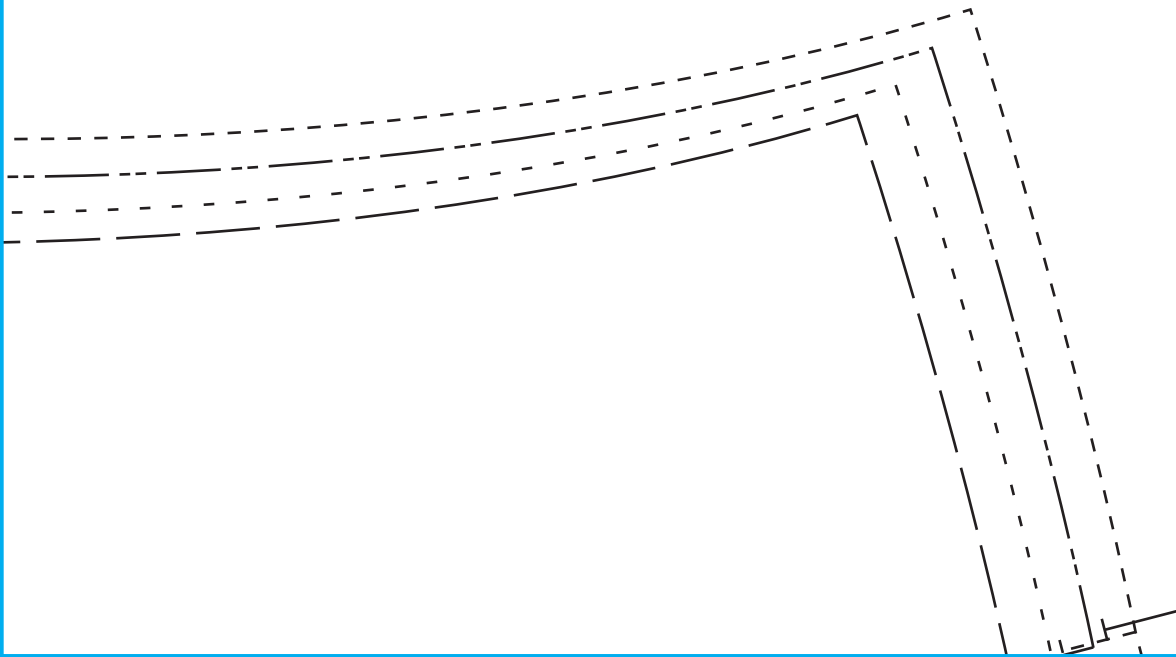
4

Lengthen or shorten here

5



6



Cut here for Mac



8



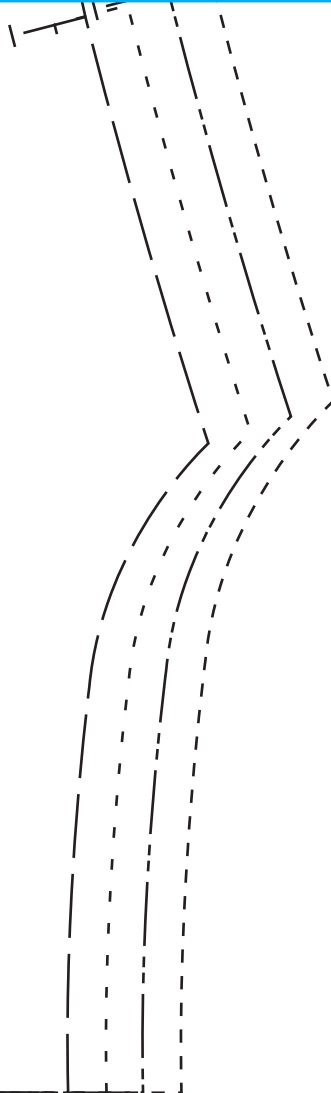
Fold line

9

10

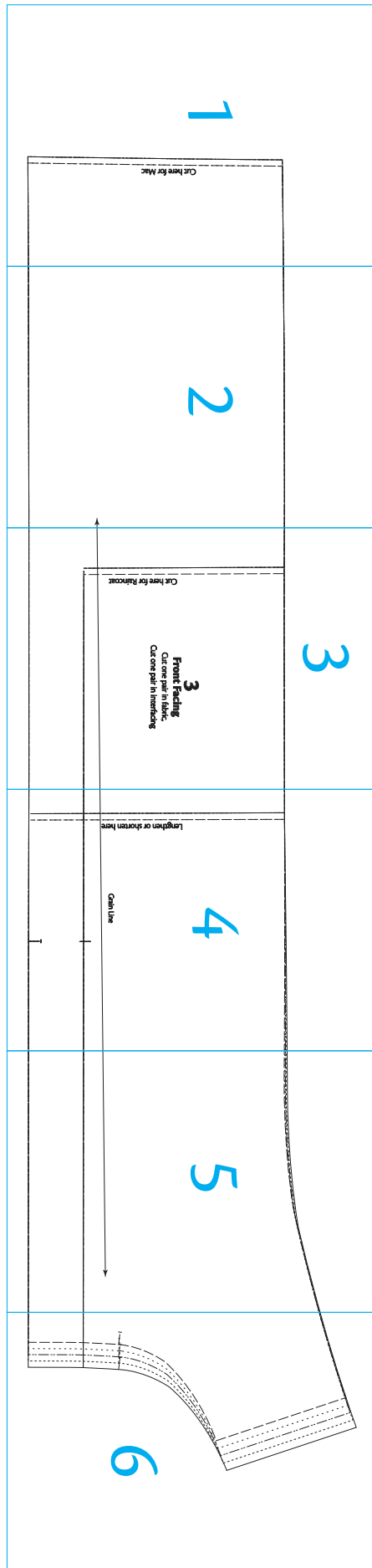
11

12



Front Facing

6 pages



Cut here for Mac



2



3

Cut here for Raincoat

3

Front Facing

Cut one pair in fabric,
Cut one pair in interfacing

4

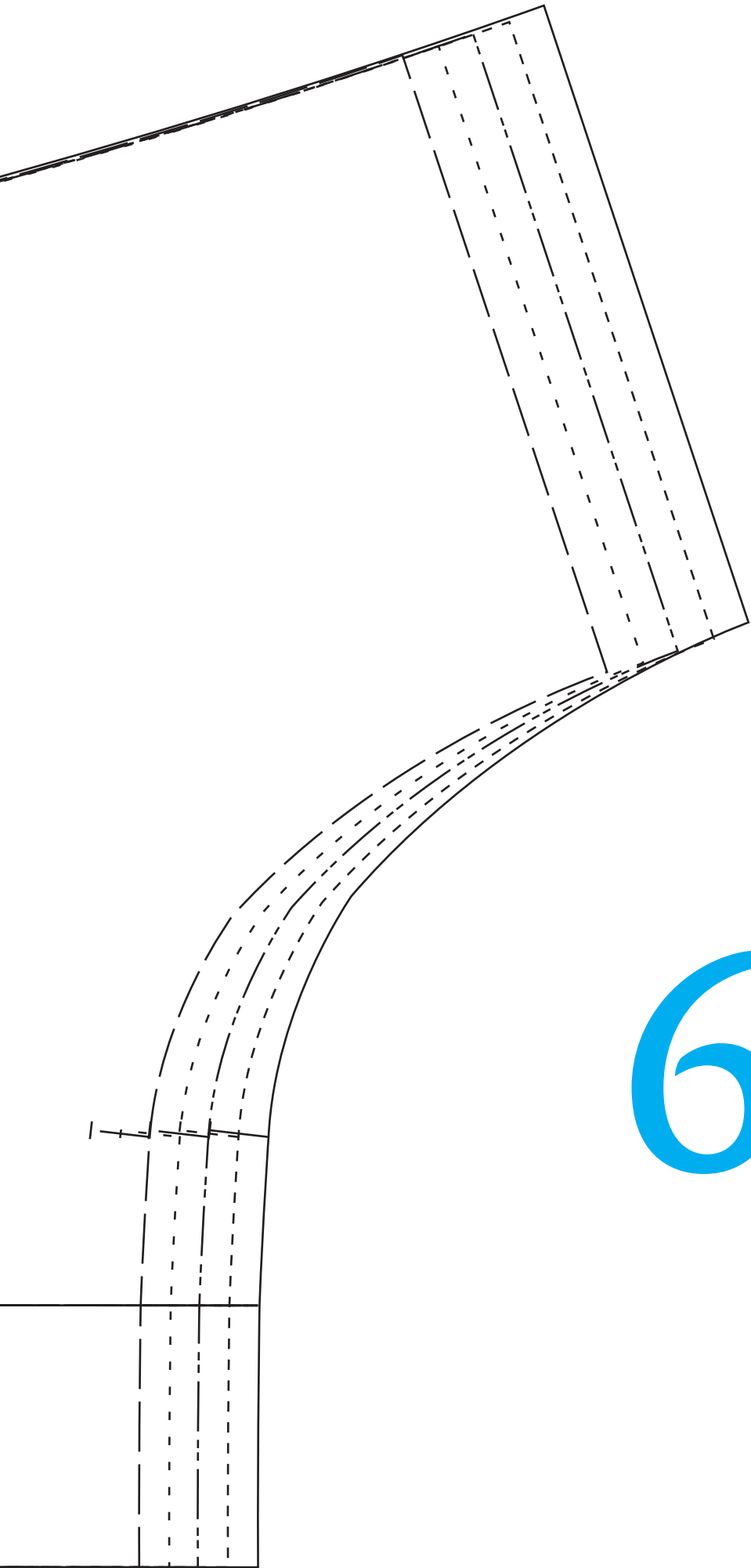
Lengthen or shorten here

Grain Line





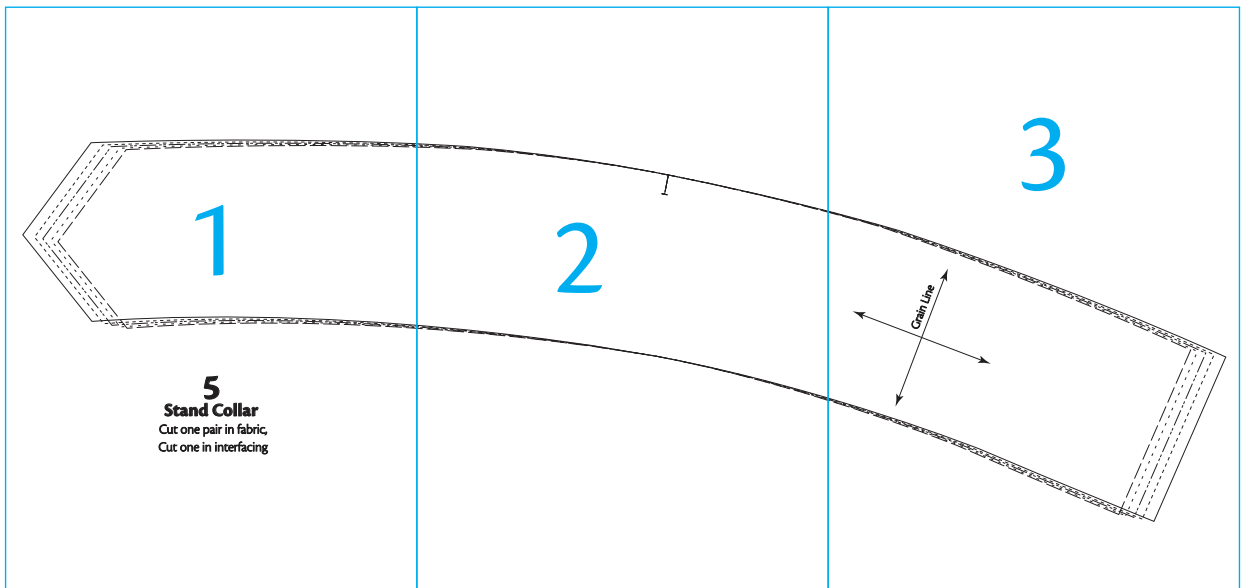
5

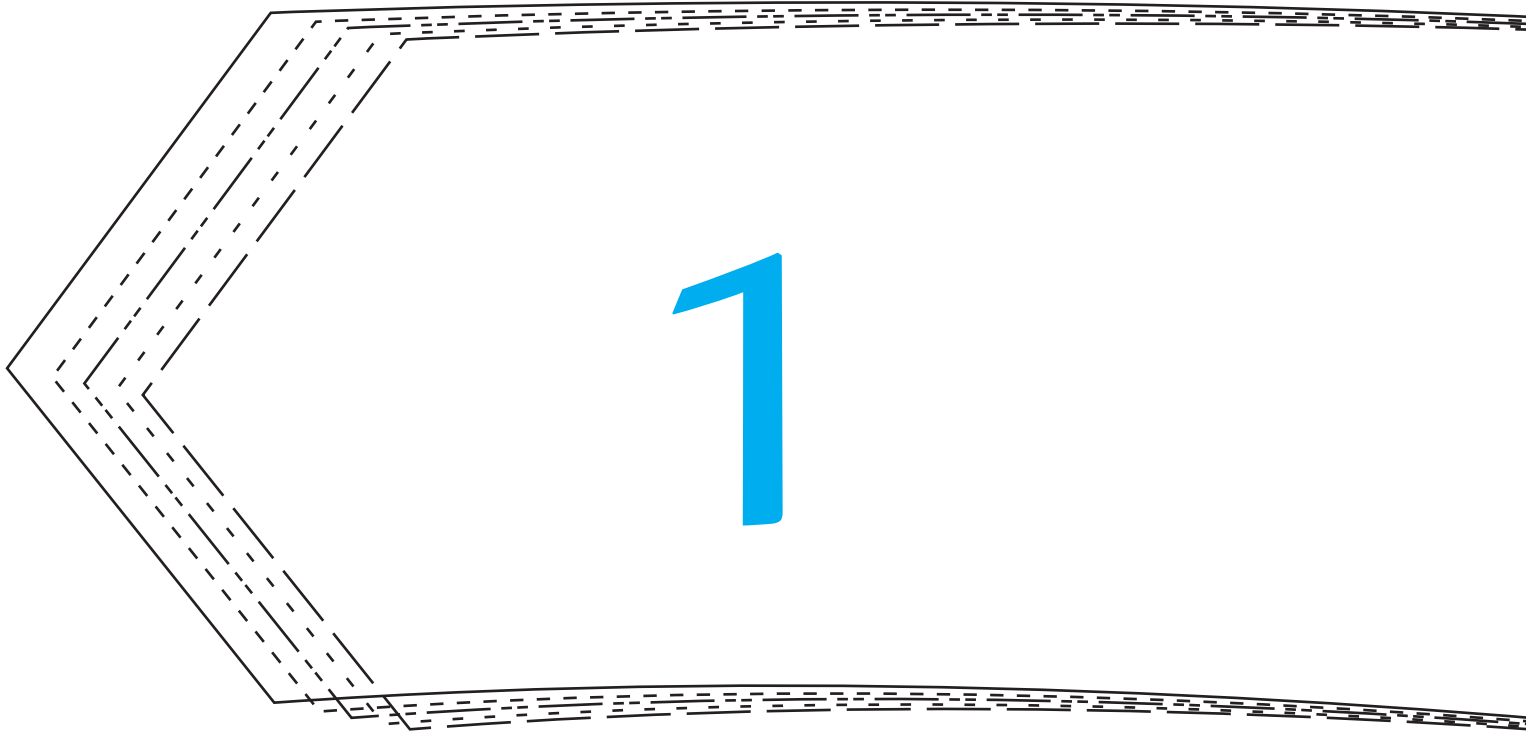


6

Stand collar

3 pages





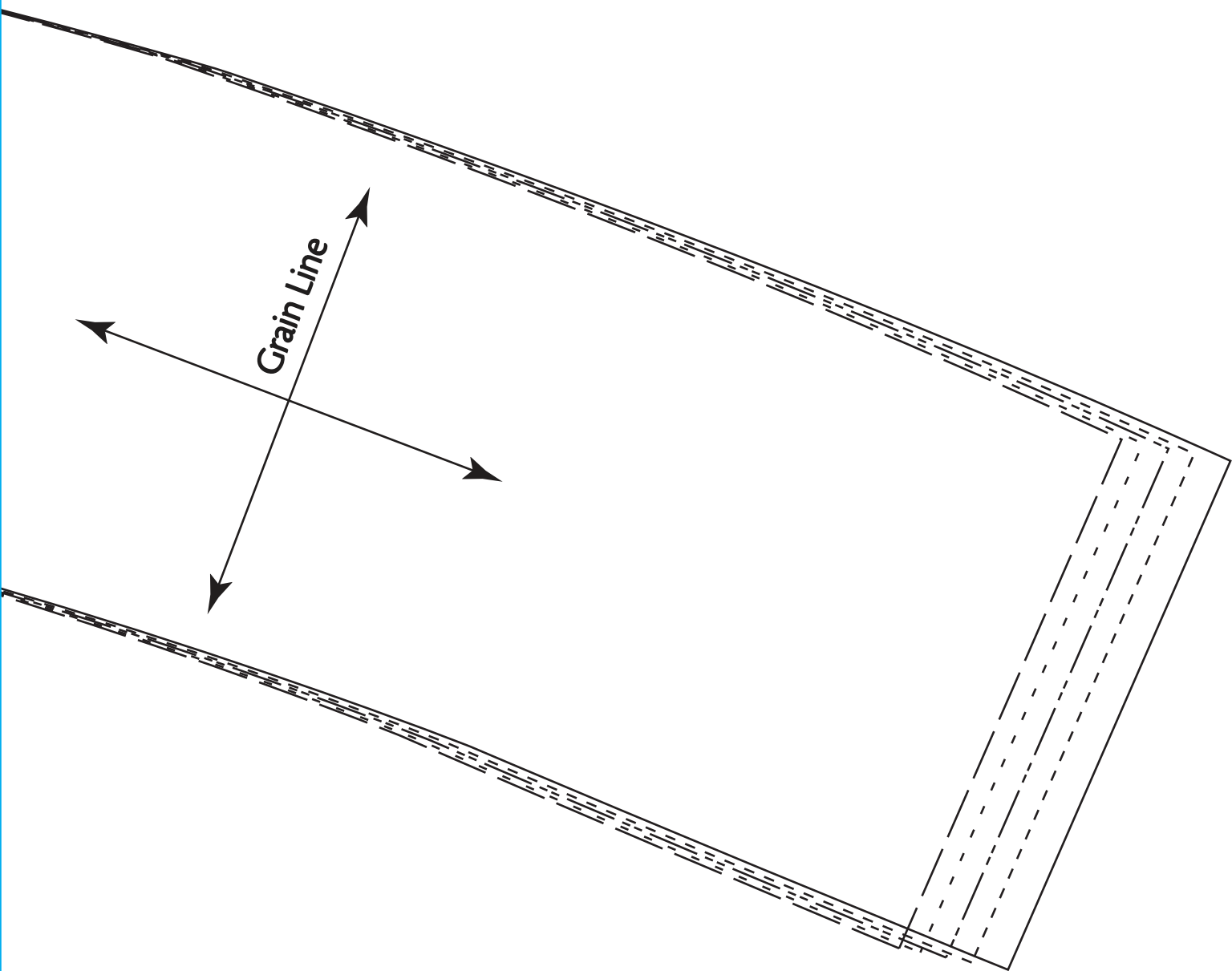
5

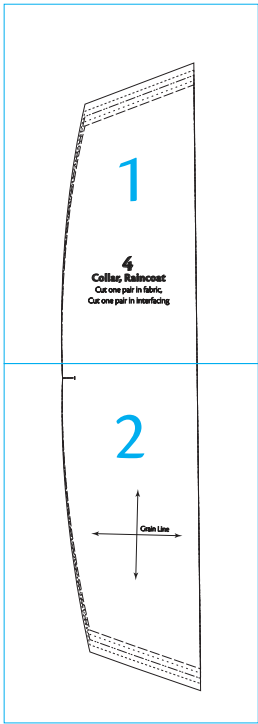
Stand Collar

Cut one pair in fabric,
Cut one in interfacing

2

3





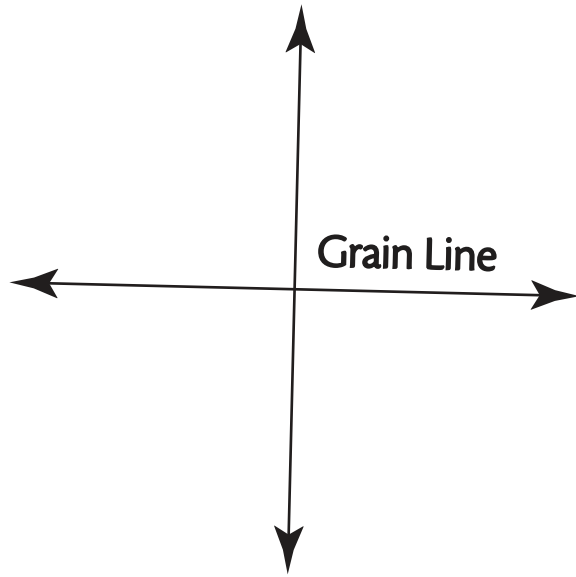
Collar, Raincoat

2 pages



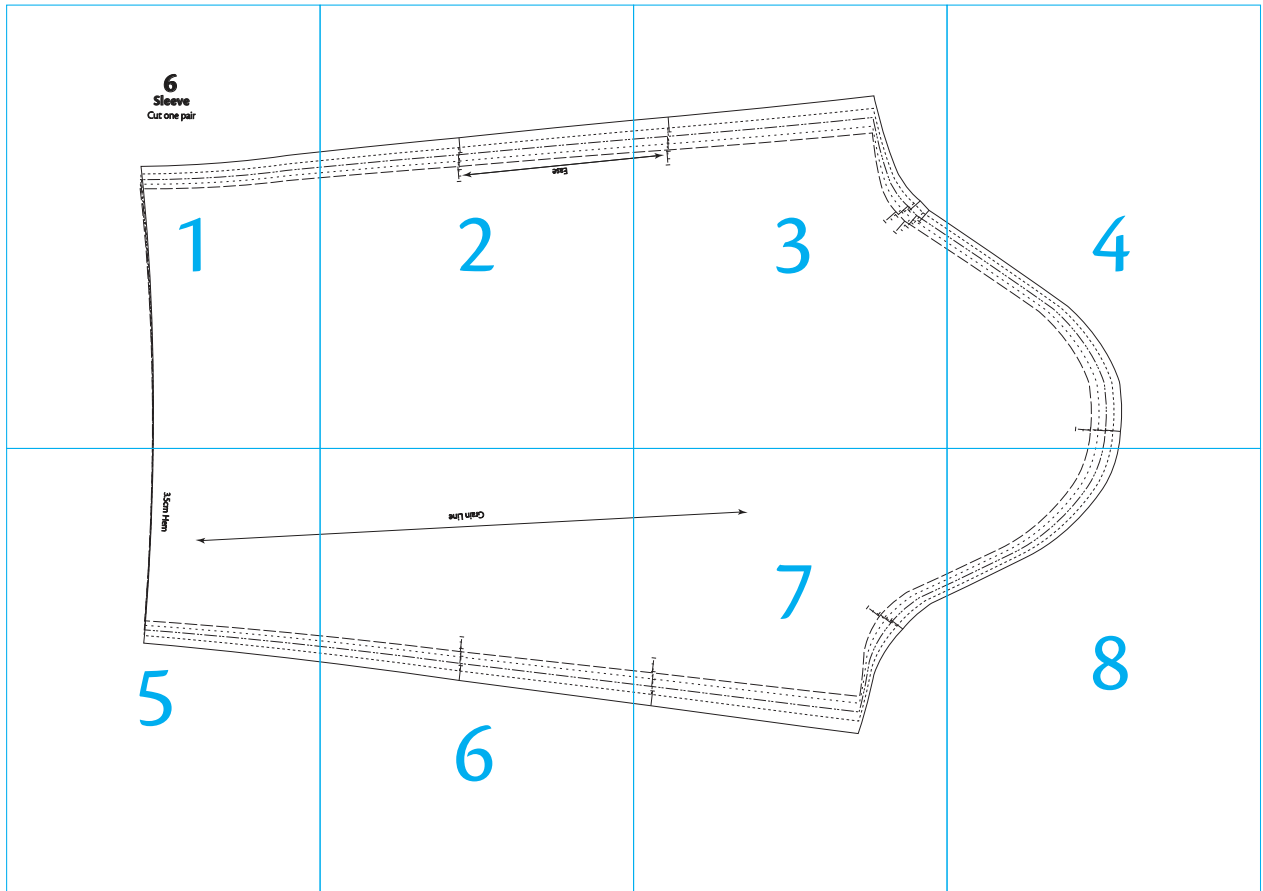
4
Collar, Raincoat
Cut one pair in fabric,
Cut one pair in interfacing

2



Sleeve

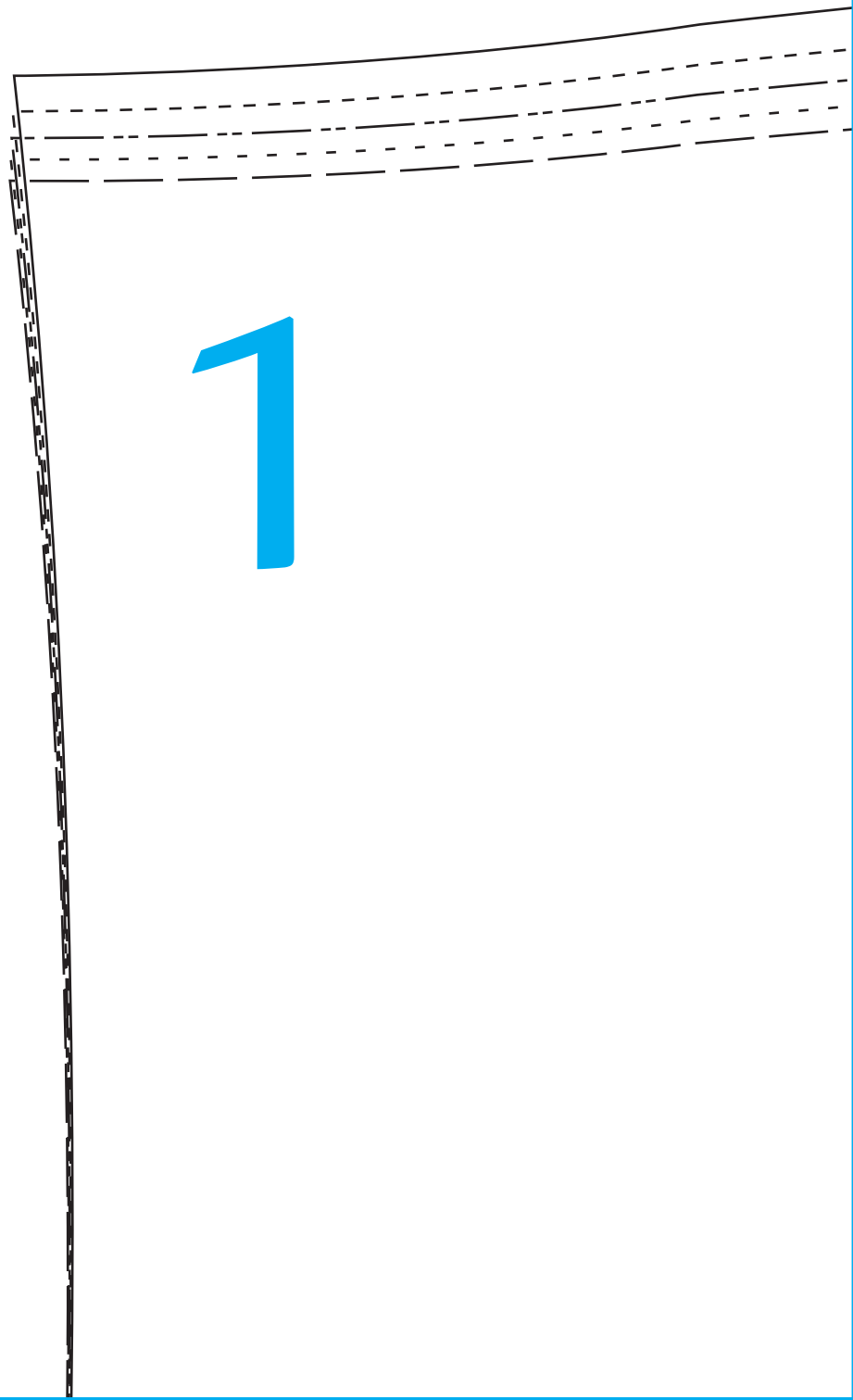
2 pages



6

Sleeve

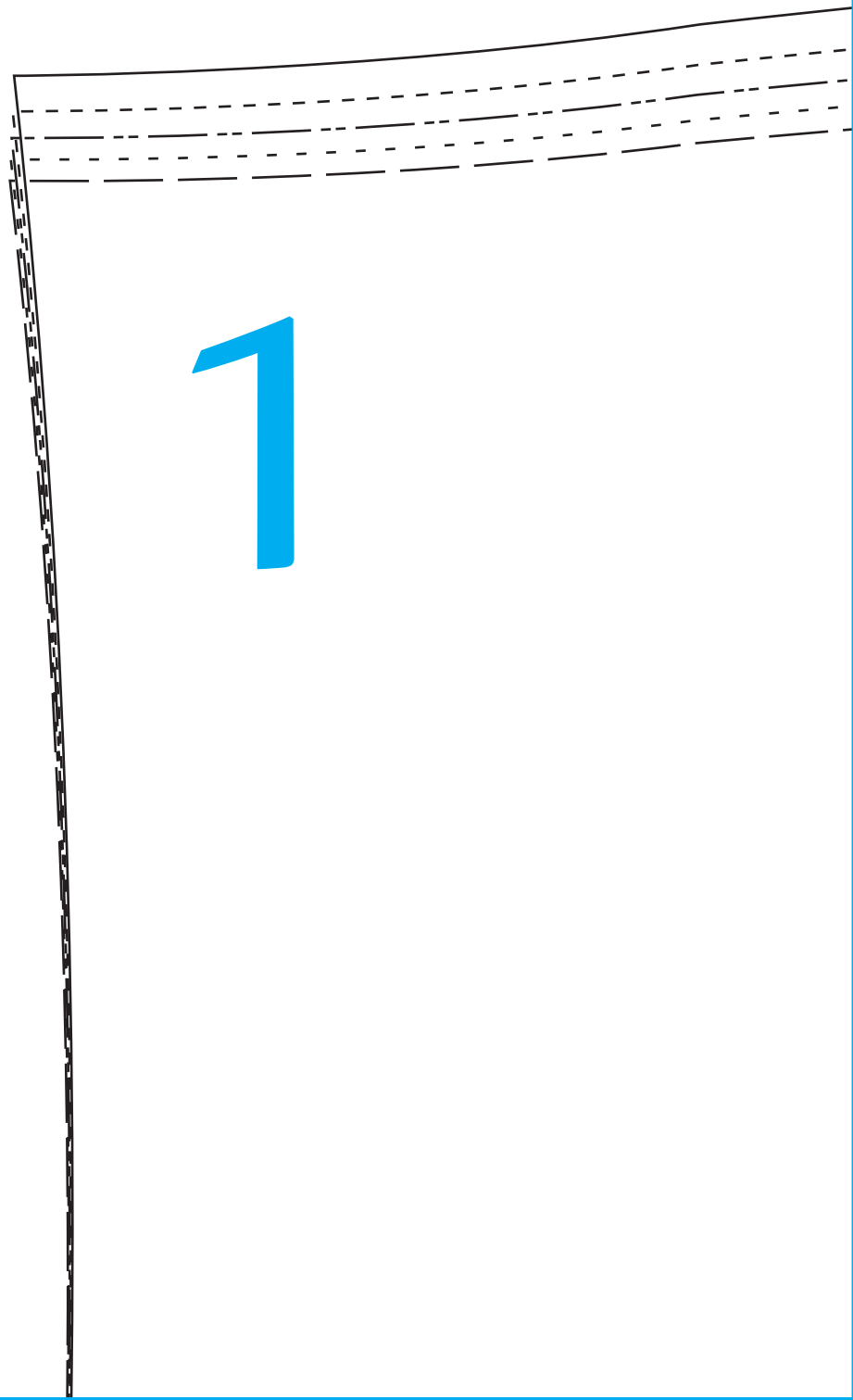
Cut one pair

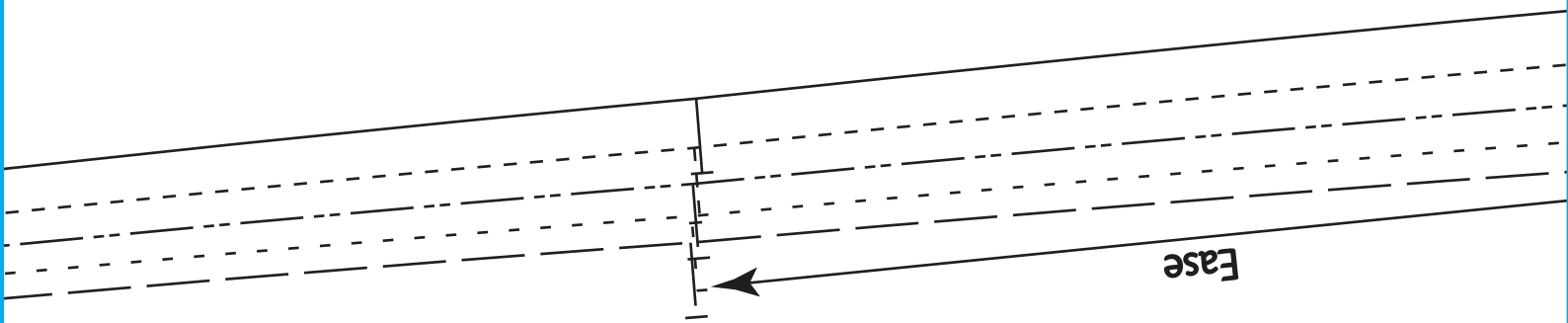


6

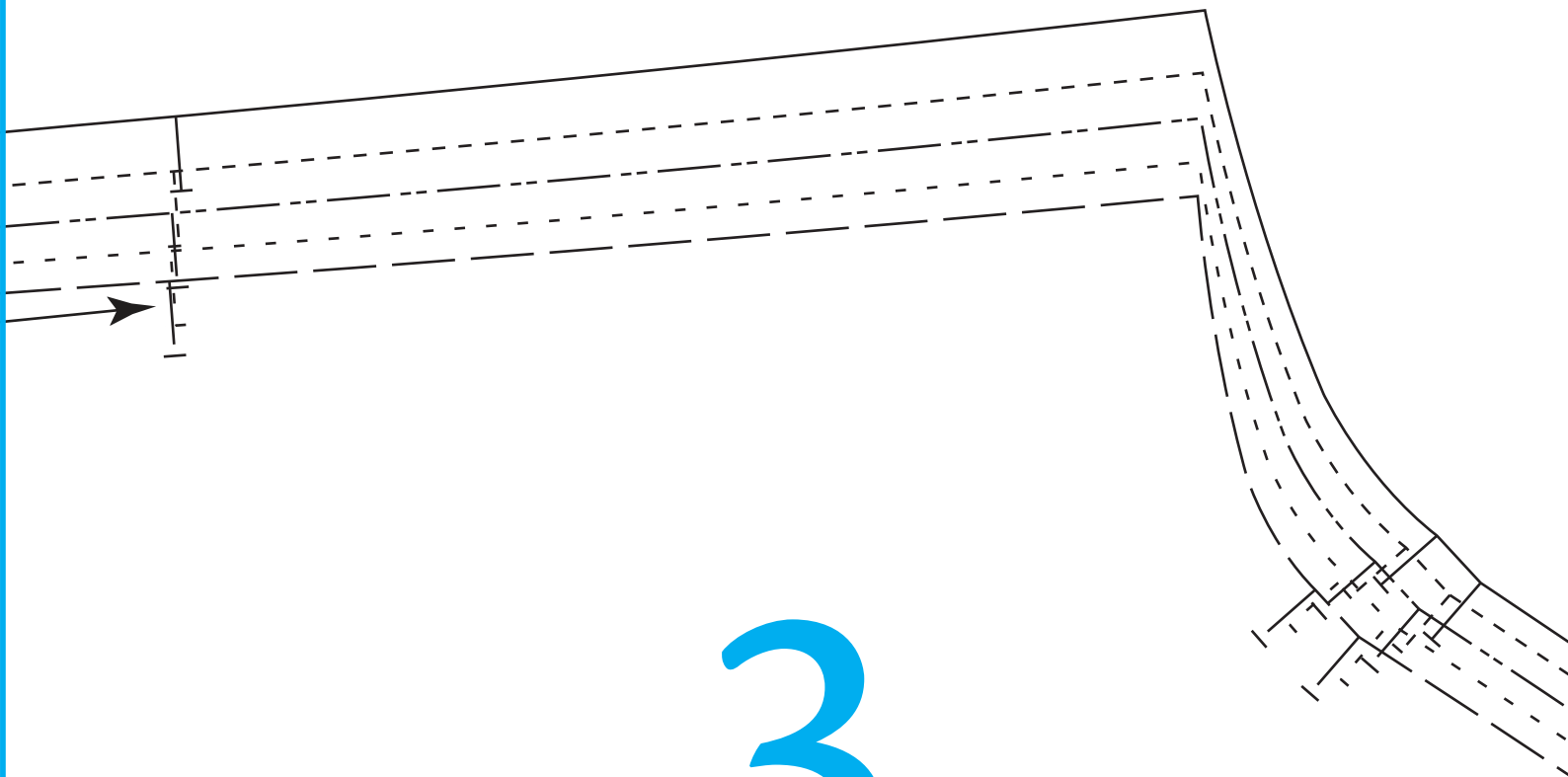
Sleeve

Cut one pair



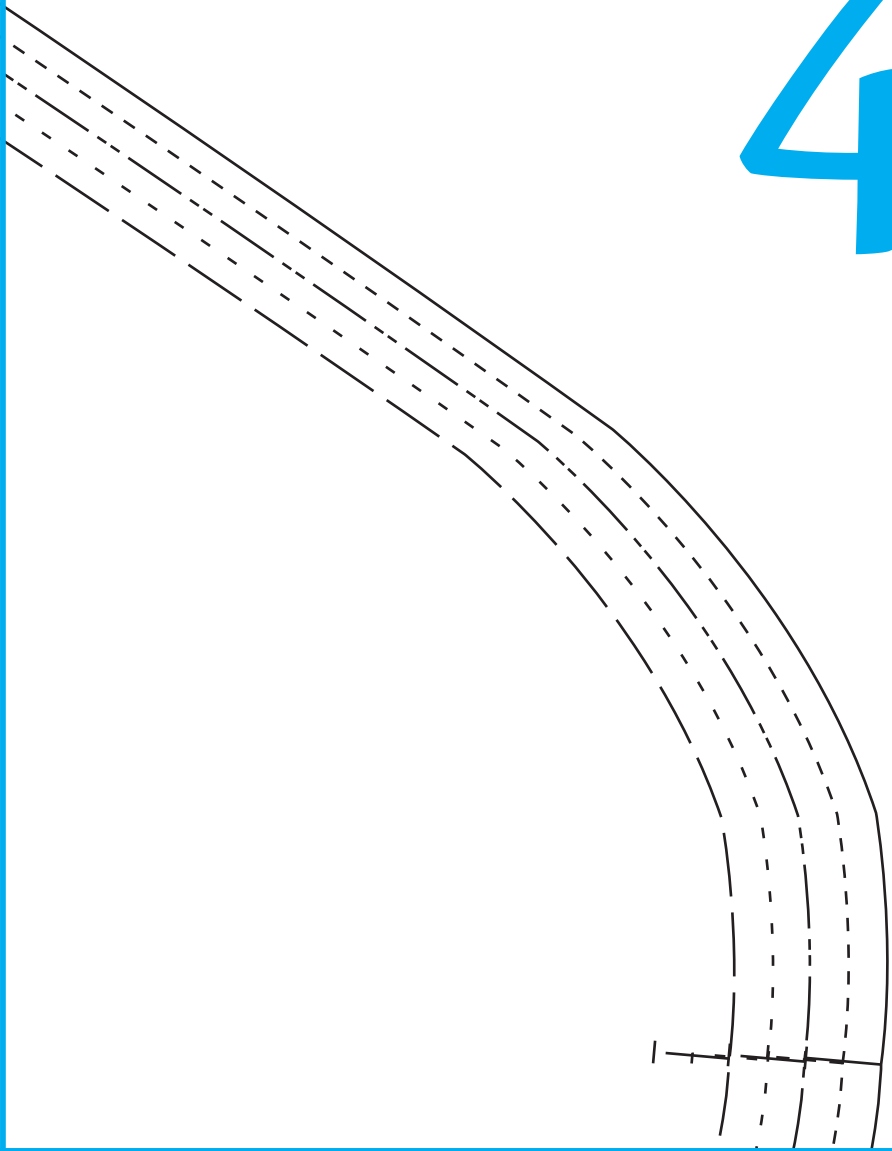


2

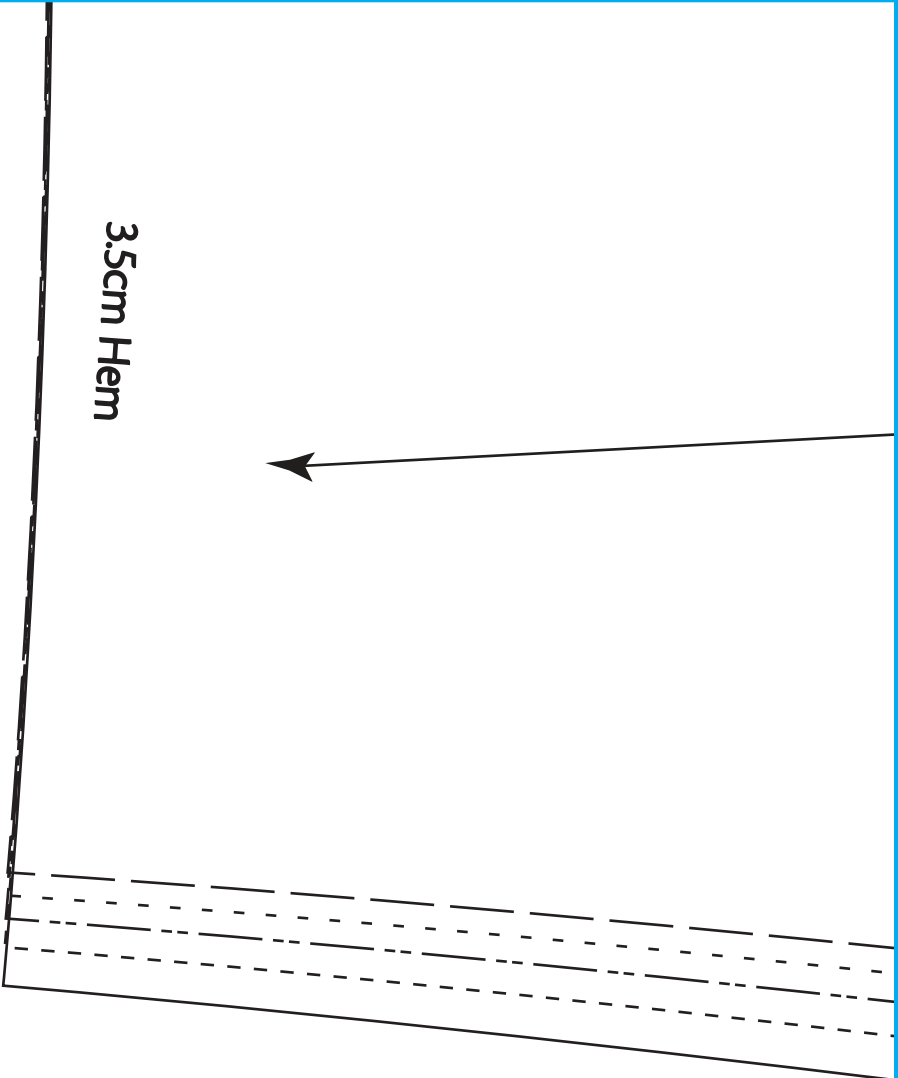


3

4



5

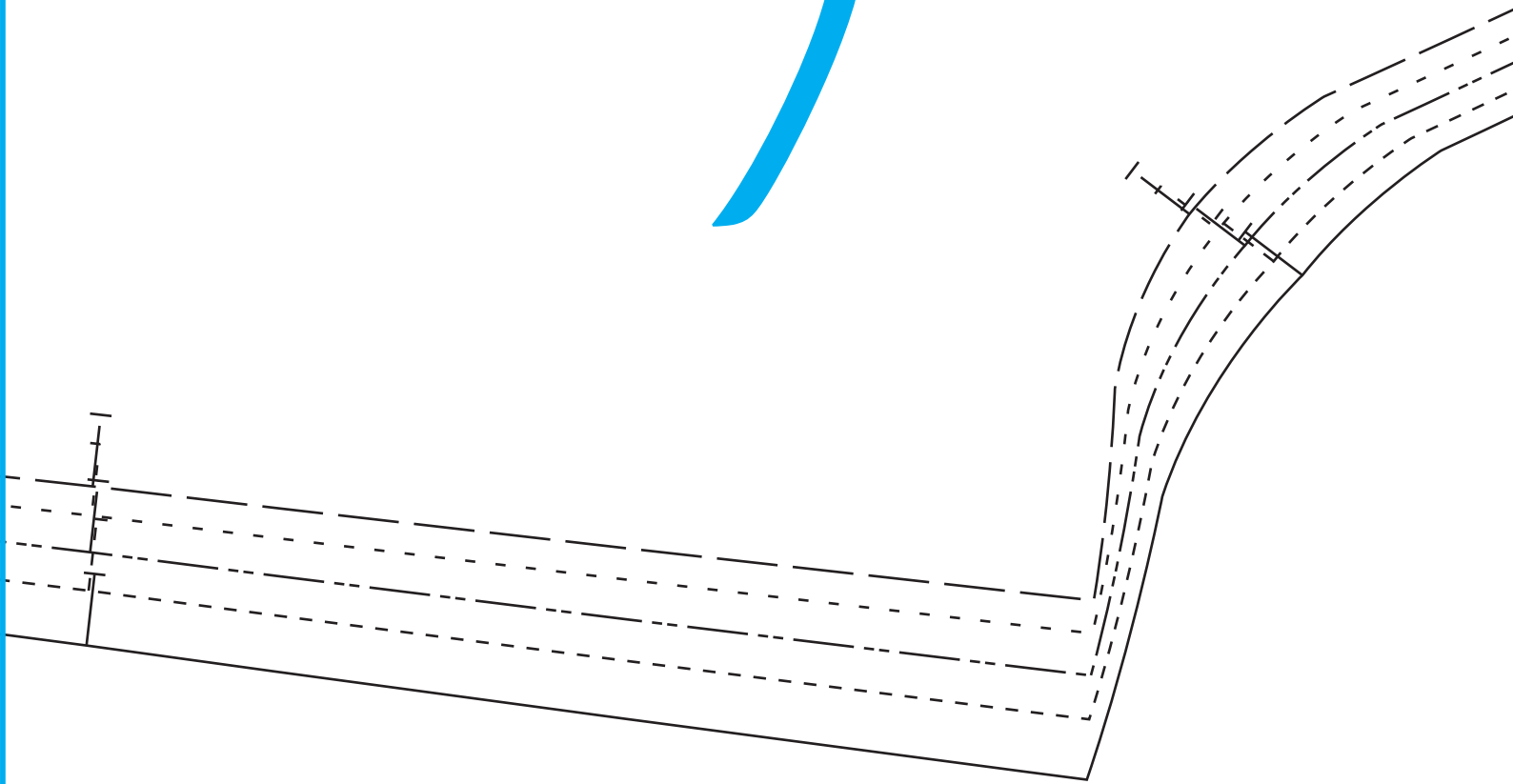


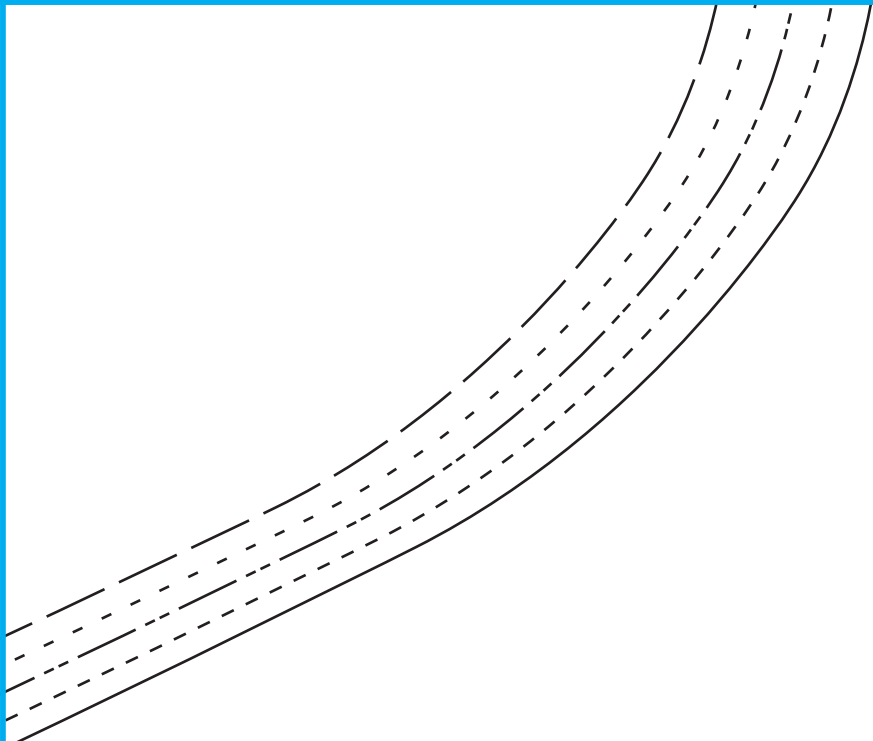
Grain Line

6



7





8