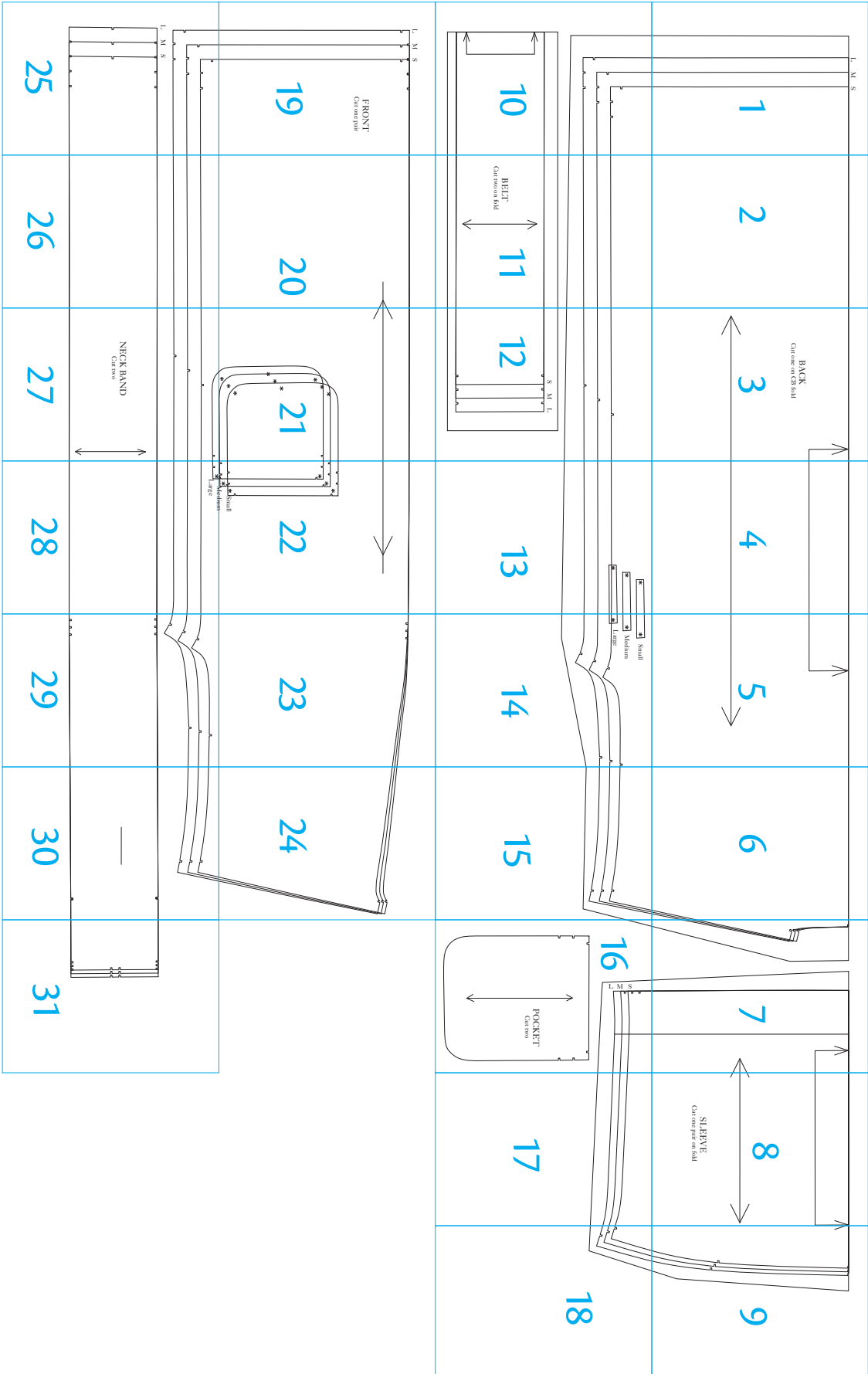


Kimono robe



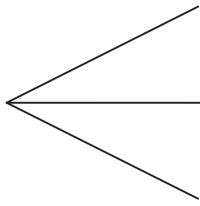
L M S

1

2

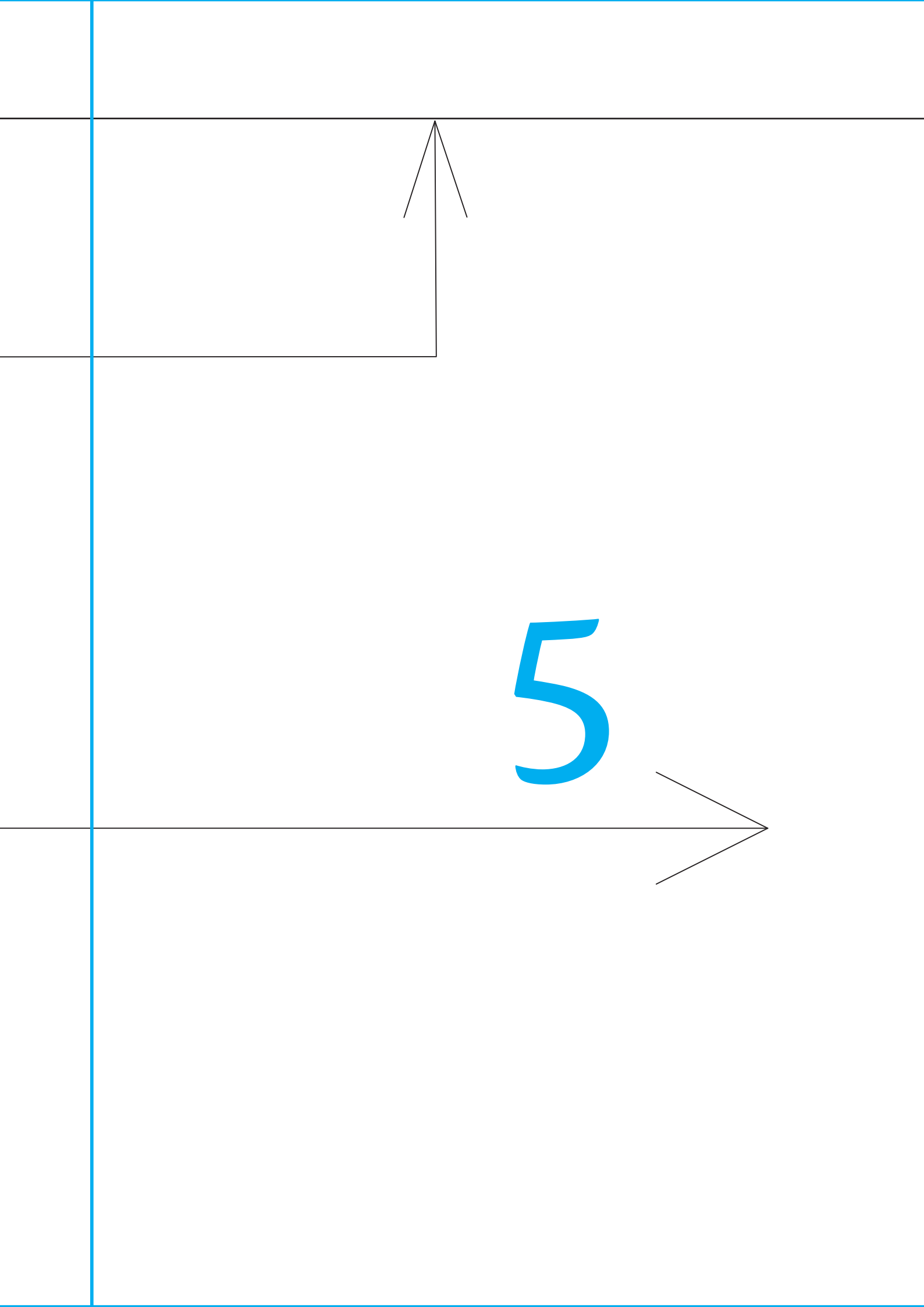
BACK
Cut one on CB fold

3

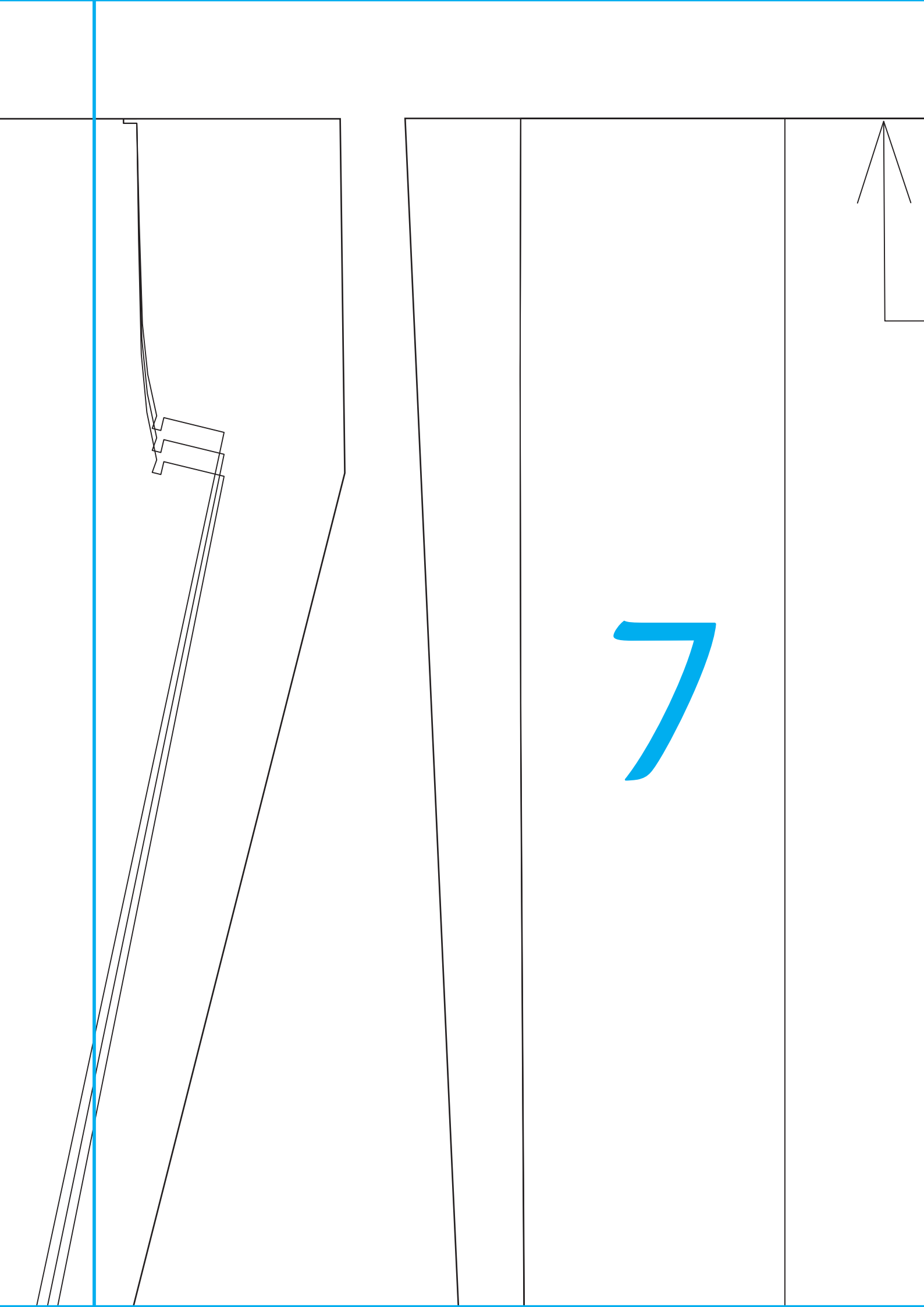


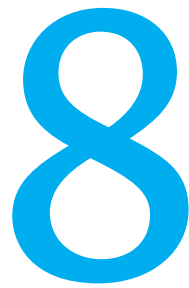


4



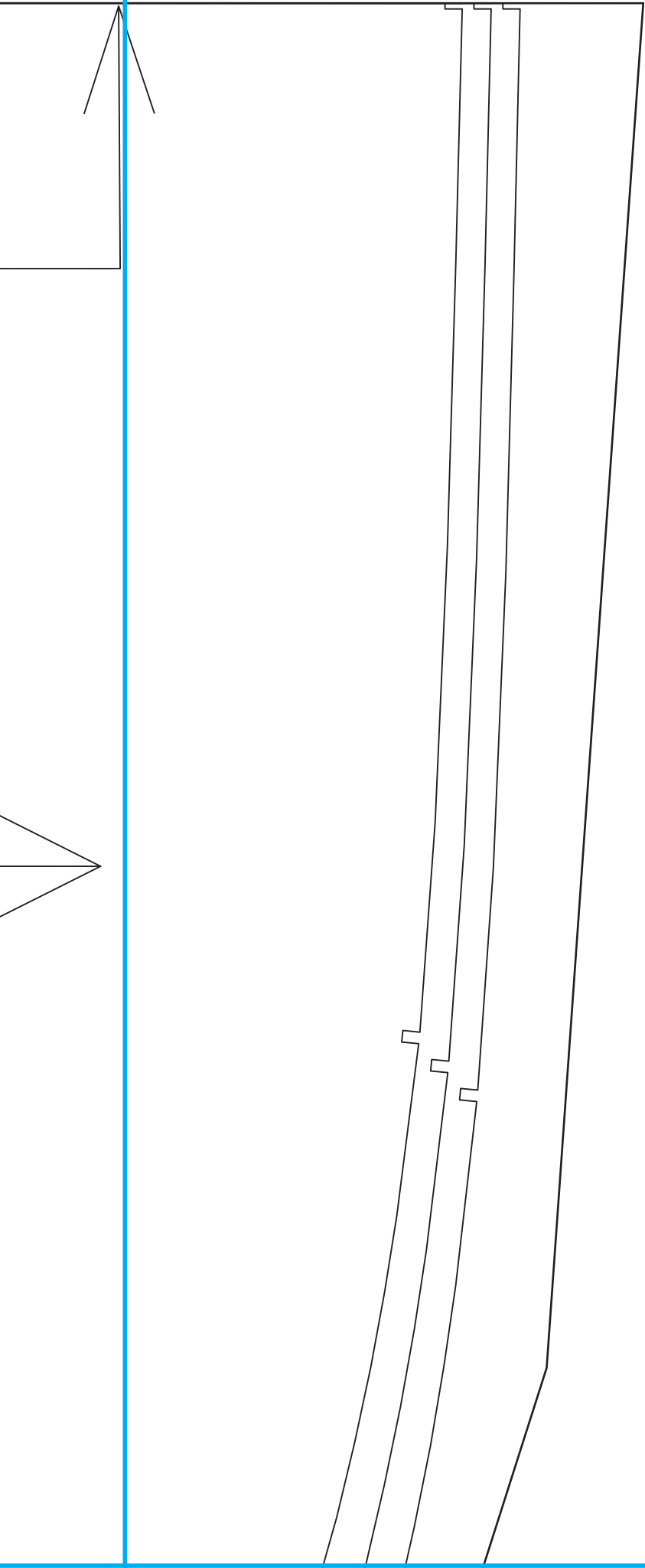
6



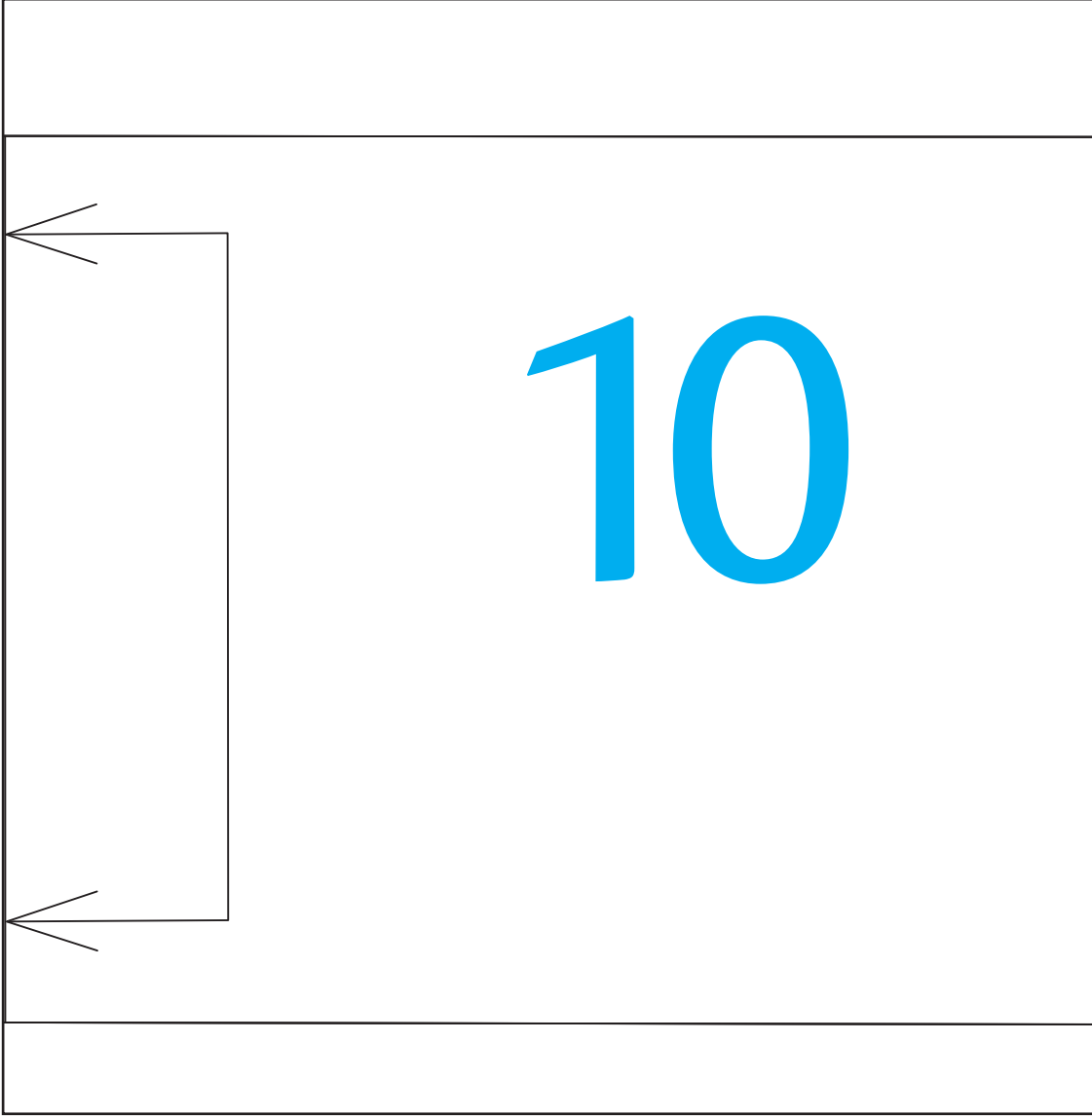
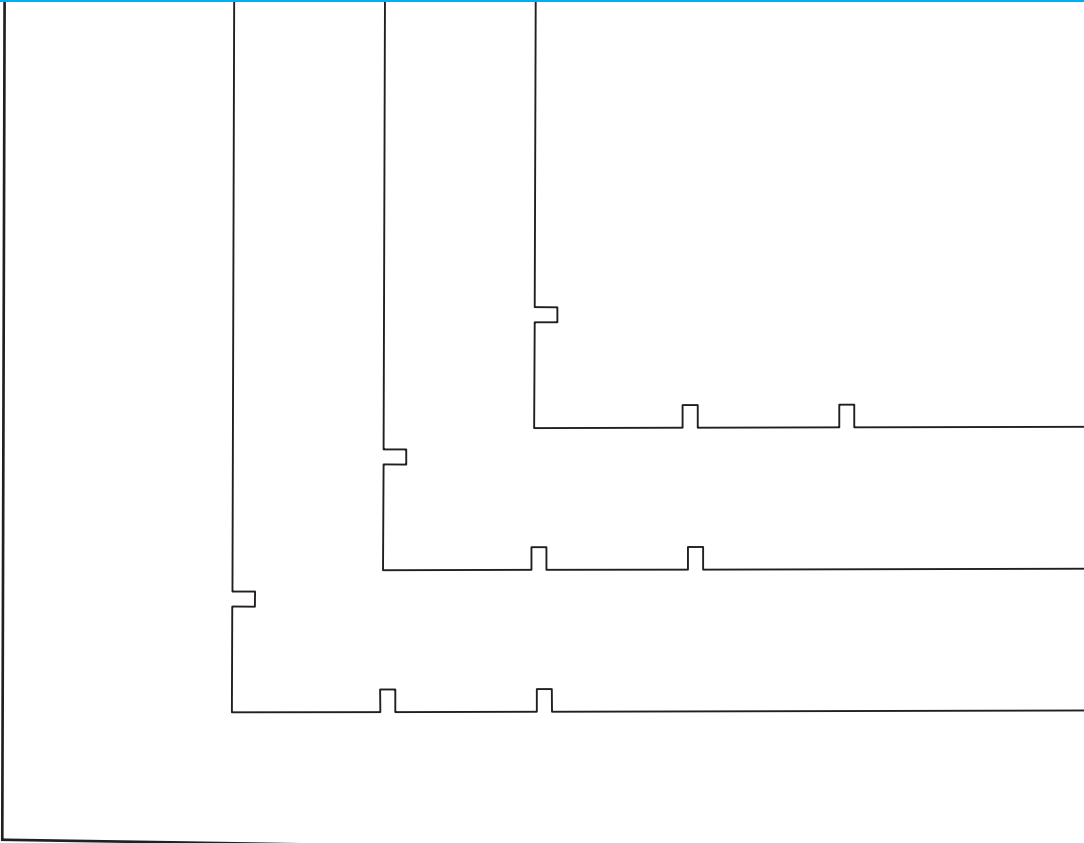


8

SLEEVE
Cut one pair on fold



9



BELT
Cut two on fold



11

12

S M L

S	M	L

*

*

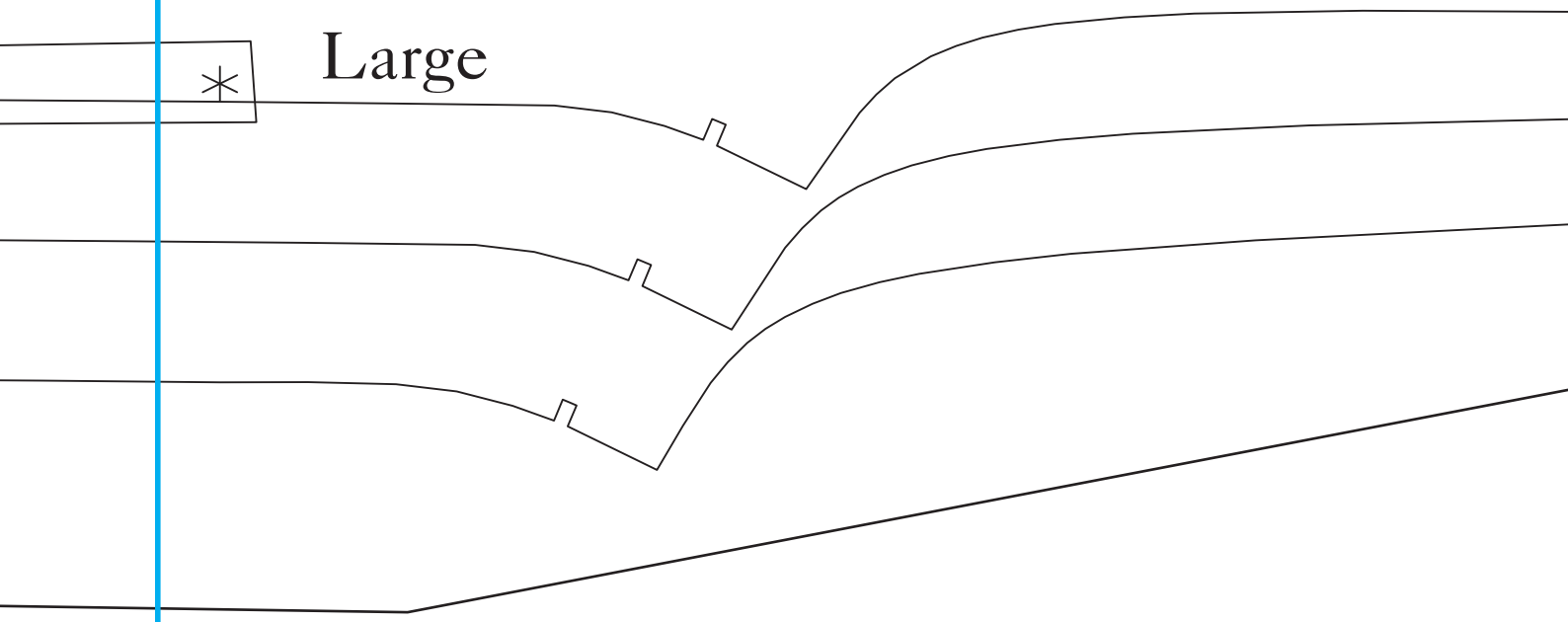
*

13

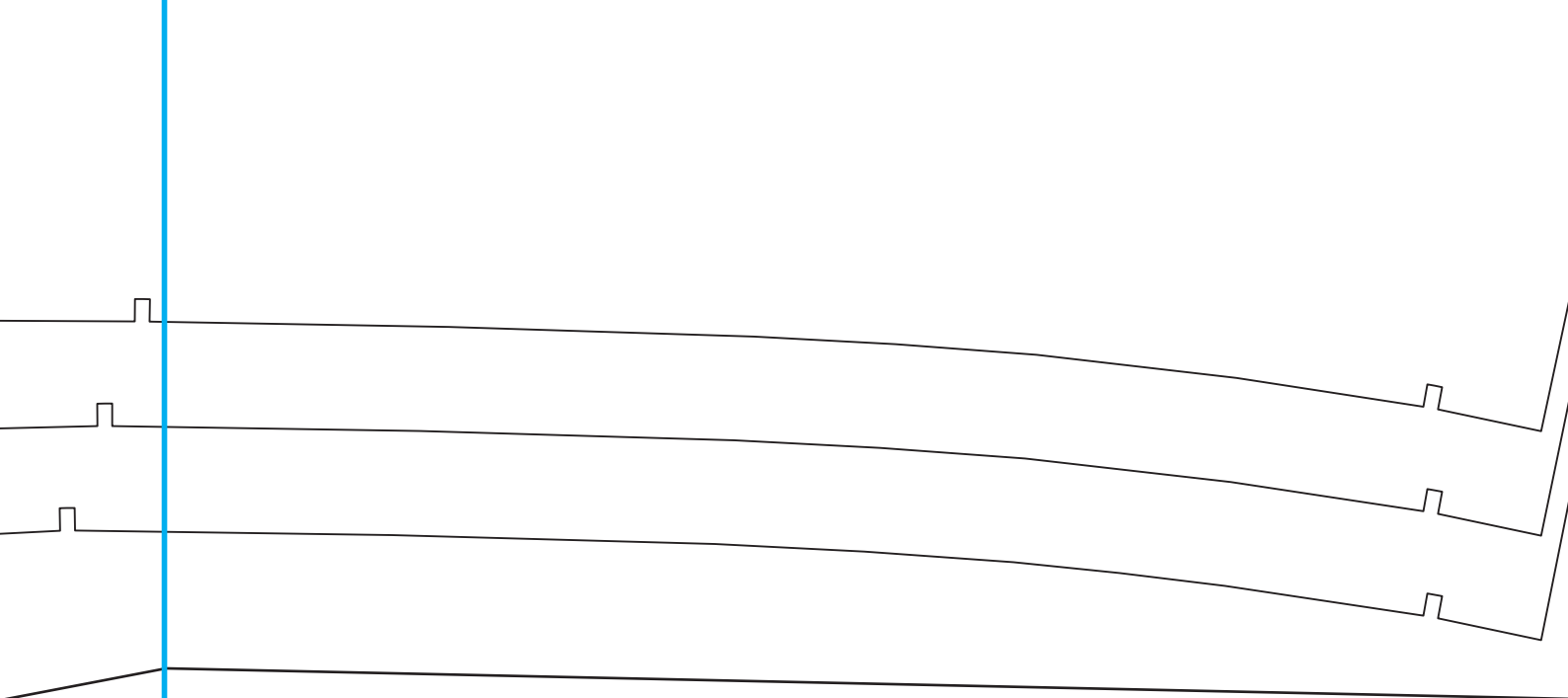
* Small

* Medium

* Large



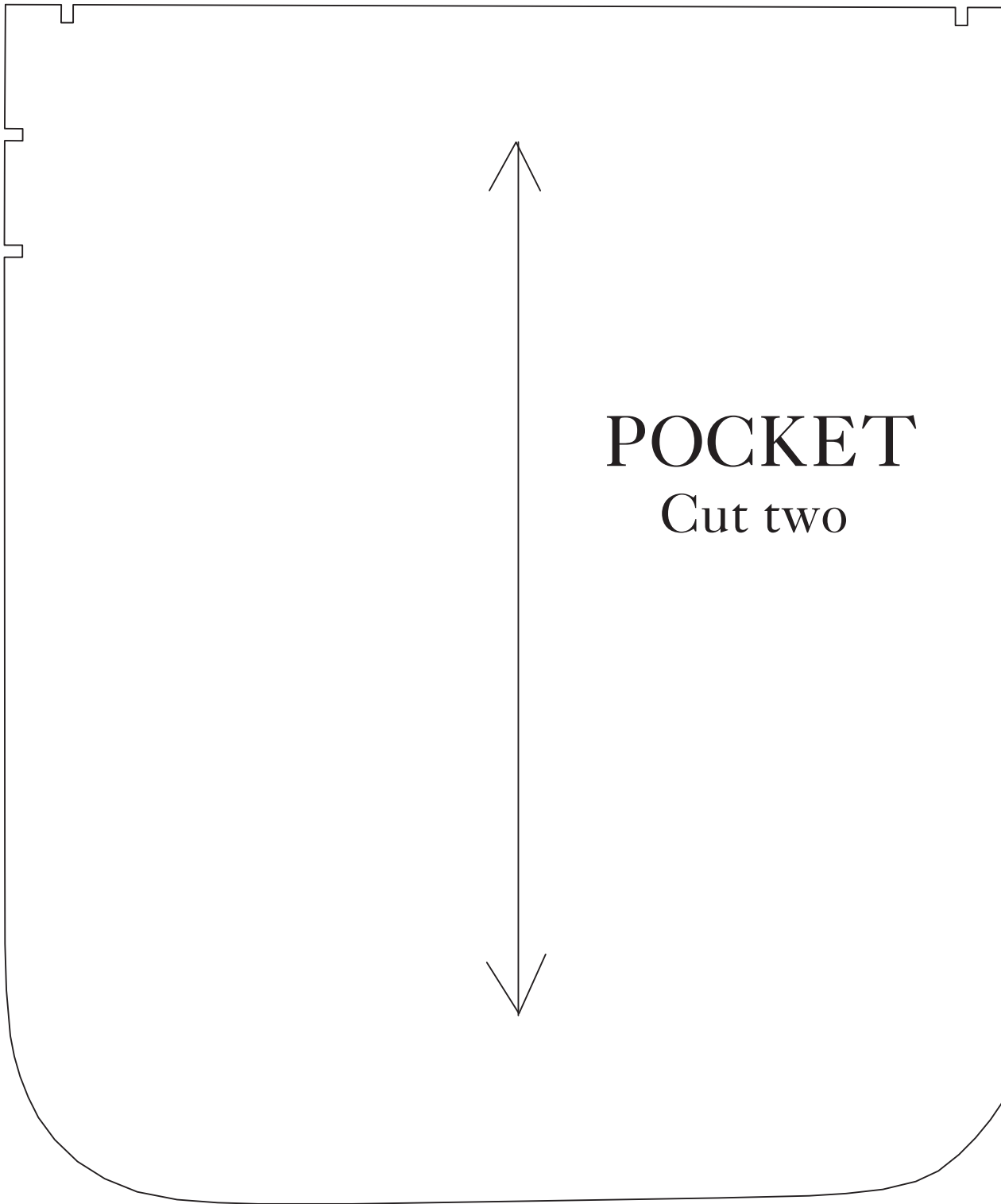
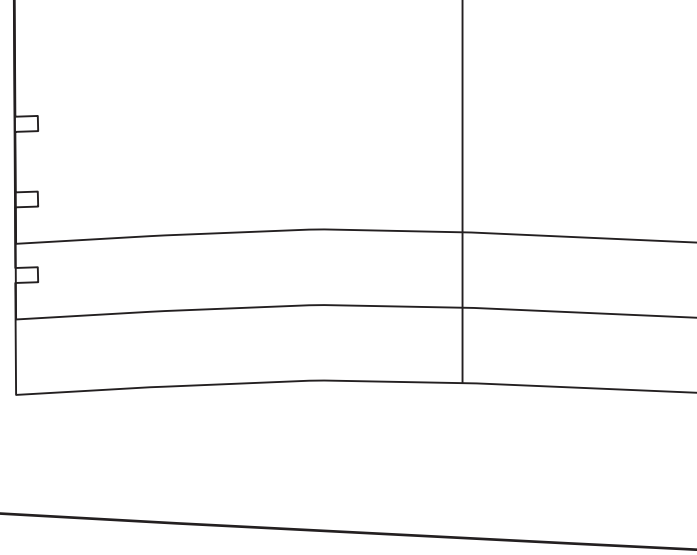
14



15

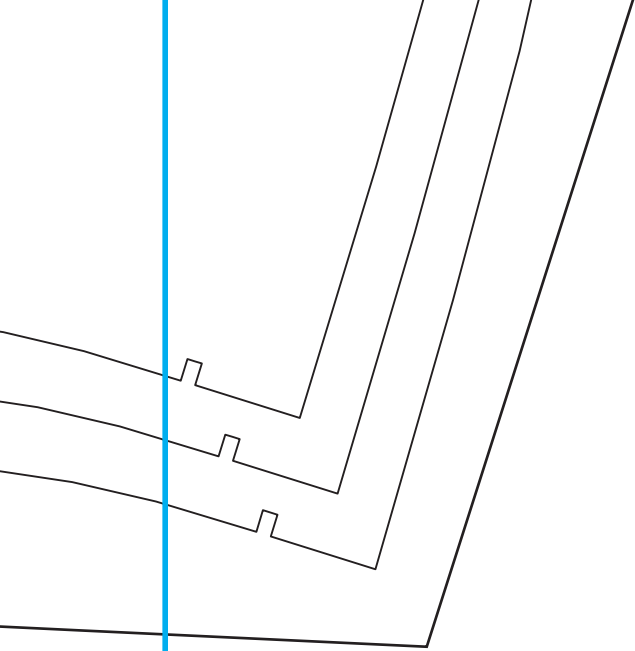
16

L M S



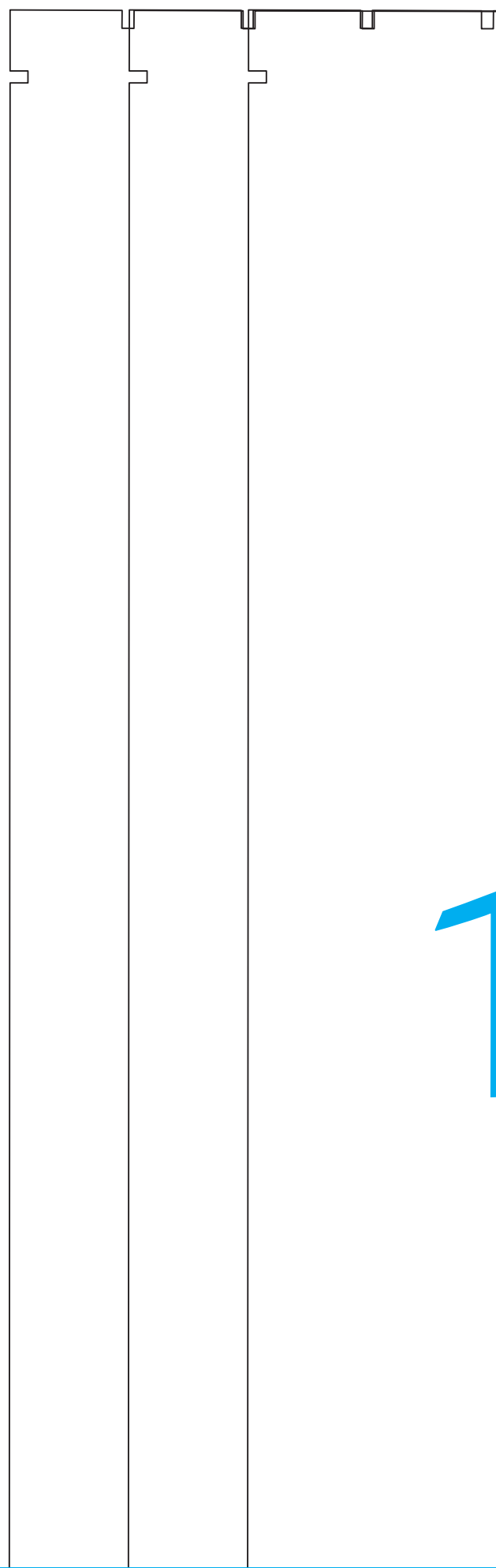
POCKET
Cut two

17



18

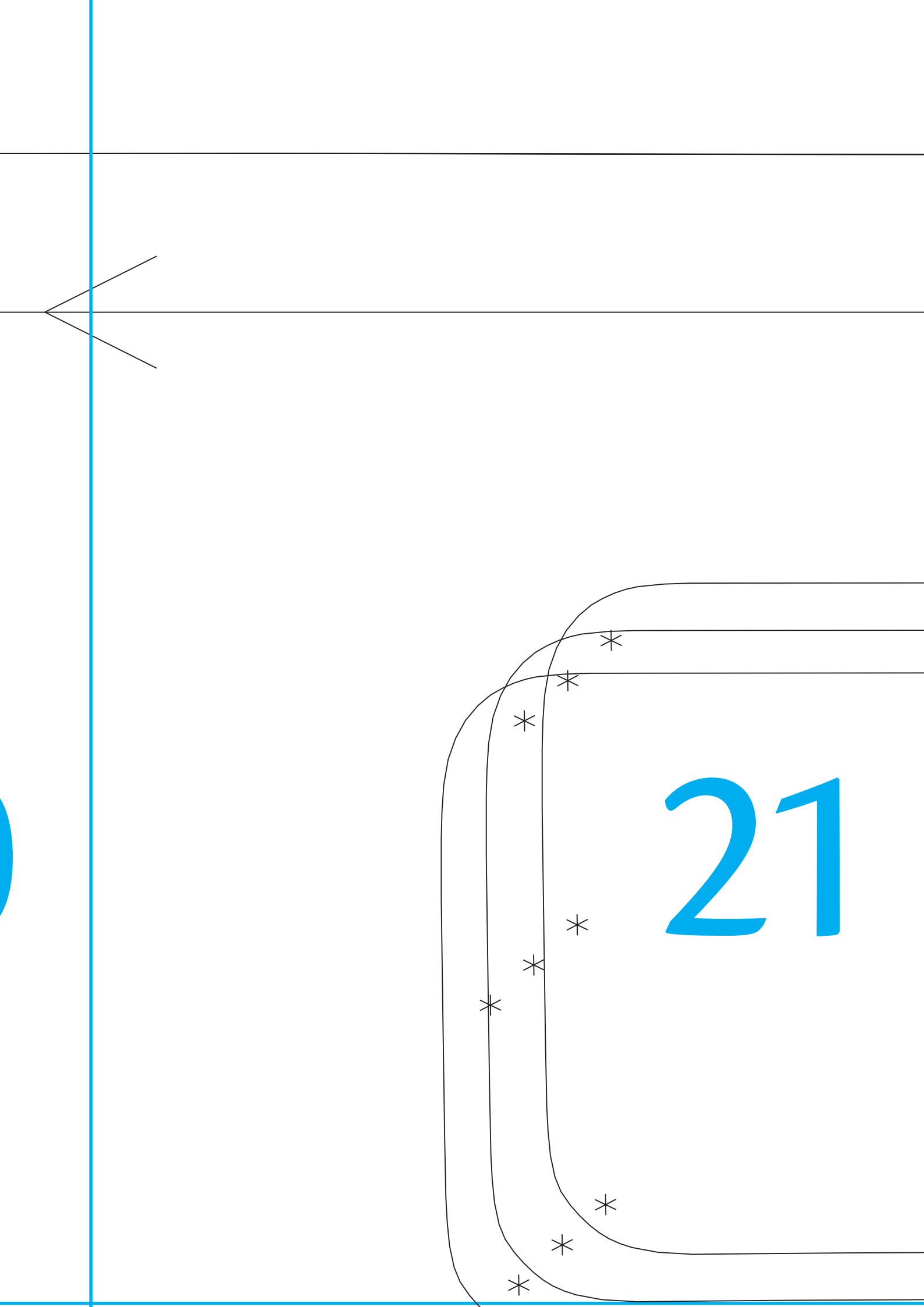
L M S



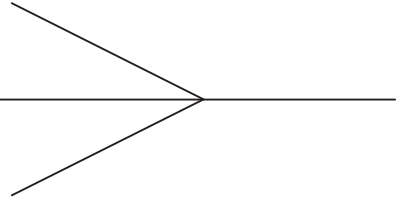
FRONT
Cut one pair

19

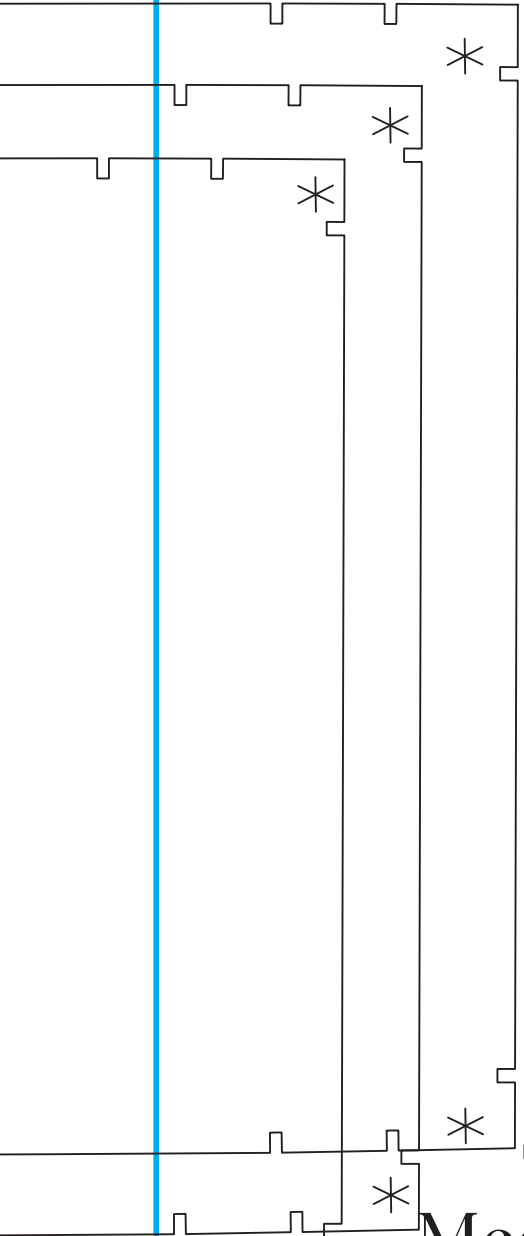
20



21



22



* Small

* Medium



23



24

L M S

25

26



NECK BAND

Cut two

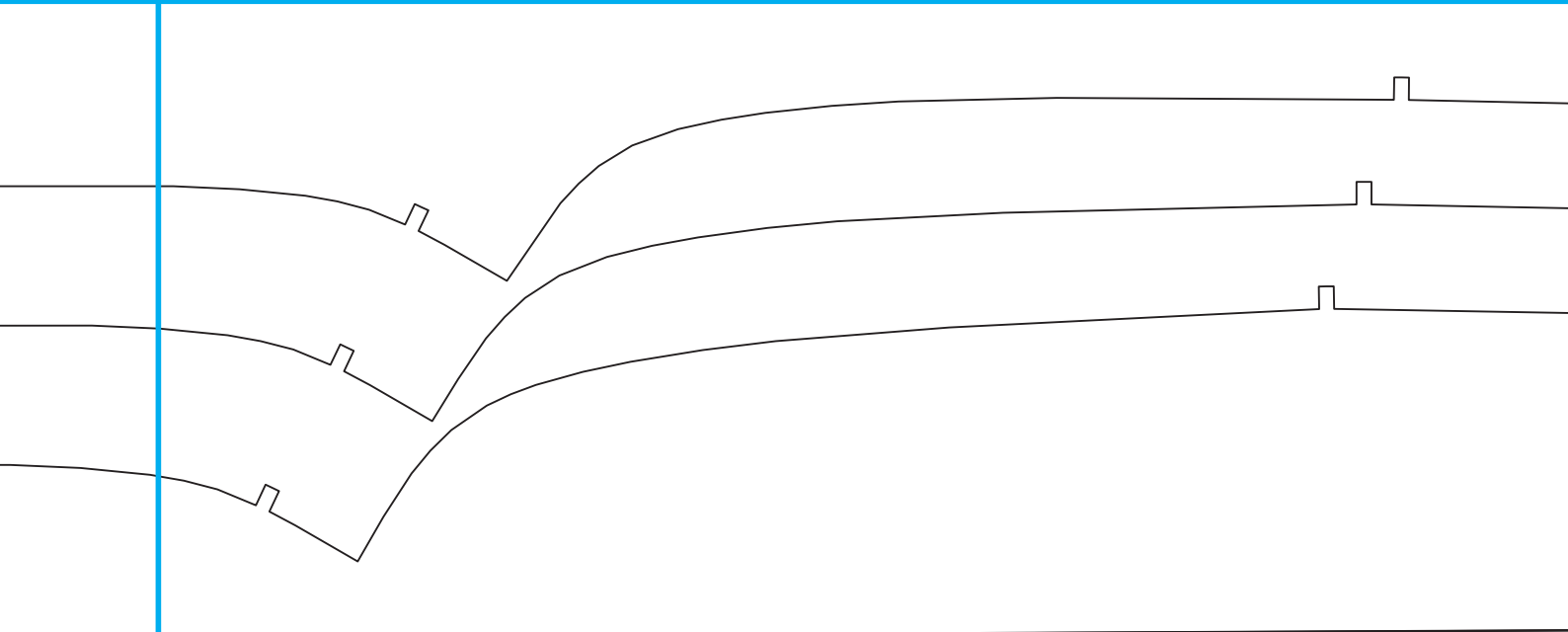
27

Medium

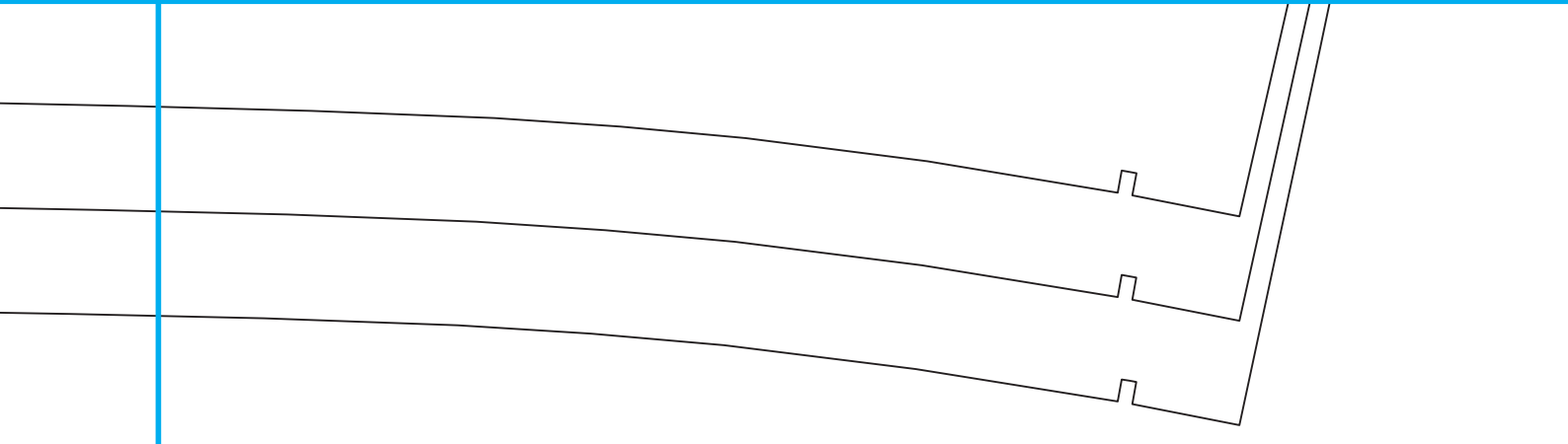
Large



28

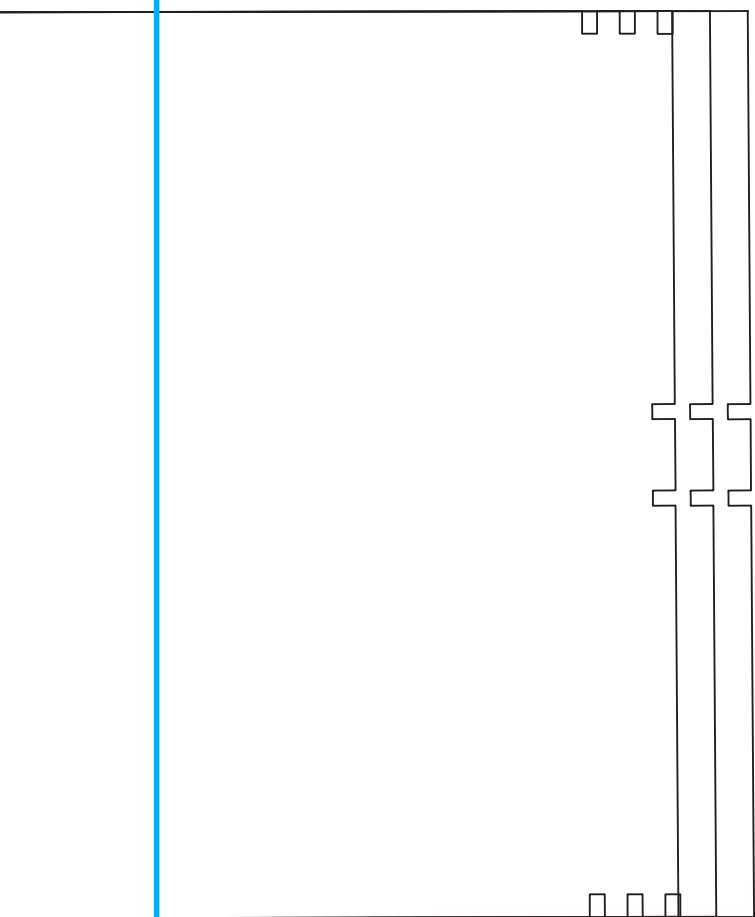


29



—

30



31