

nautical collection



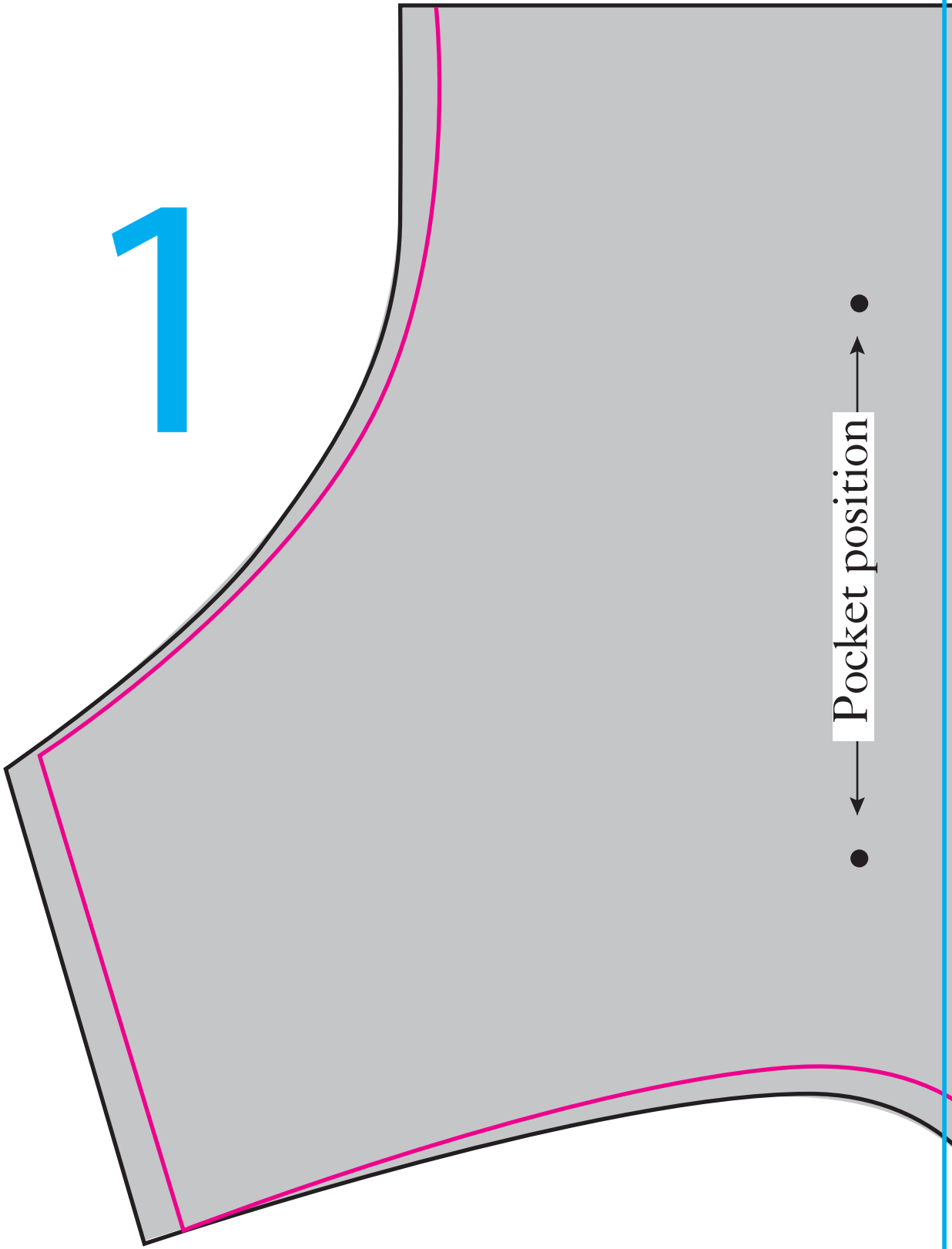
Use these guides to get started today

Designer: Amanda Walker

Page: 15

Seventeen A4 sheets

<p>1</p> <p>Front Dress Facing Cut one on fold in fabric</p>	<p>2</p> <p>Cut the shaded area above in fabric for dress facing</p>	<p>3</p> <p>Front Dress/Tunic Cut one on fold Sizes 8-10, 12-14</p>	<p>4</p> <p>Cut here for 3/4 length sleeved tunic Cut here for short sleeved tunic</p>	<p>5</p>
<p>6</p> <p>Back Dress Facing Cut one pair in fabric</p>	<p>7</p> <p>Cut the shaded area above in fabric for dress facing</p>	<p>8</p> <p>Back Dress/Tunic Cut one pair Sizes 8-10, 12-14</p>	<p>9</p> <p>Cut here for 3/4 length sleeved tunic Cut here for short sleeved tunic</p>	<p>10</p>
<p>11</p> <p>Tunic Sleeve Cut one pair</p>	<p>12</p> <p>Cuff facing (short sleeved tunic) Cut two</p>	<p>13</p> <p>Cuff facing (3/4 length sleeved tunic) Cut two Sizes 8-10, 12-14</p>	<p>14</p> <p>Pocket (3/4 length sleeved tunic) Cut one 1cm seam allowance</p>	
<p>15</p>	<p>16</p>	<p>17</p>		



1

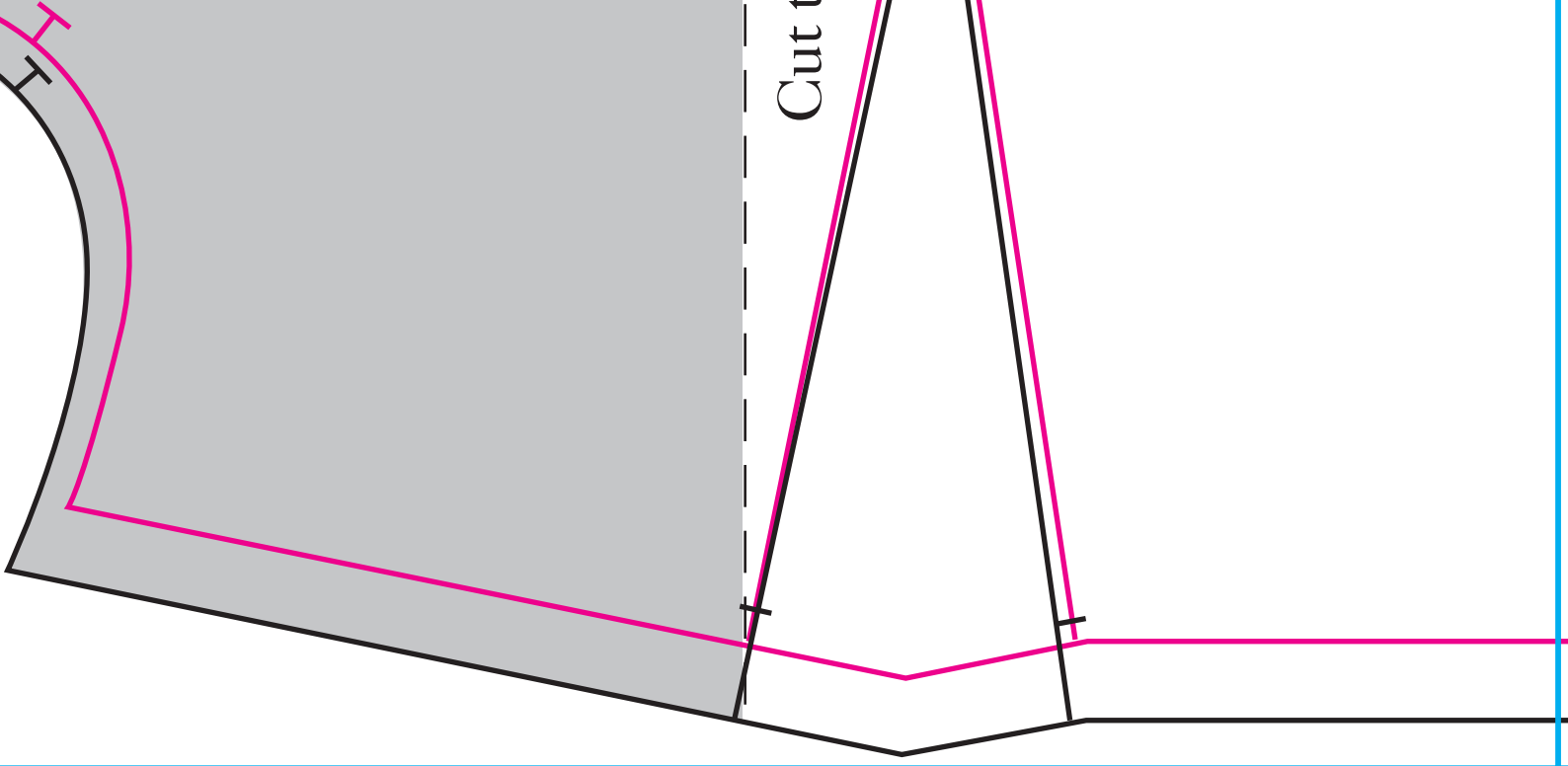
● ← Pocket position → ●

Front Dress Facing

Cut one on fold in fabric

Cut the shaded area above in fabric for dress facing

2



Front Dress/Tunic

Cut one on fold
Sizes 8-10, 12-14

3



4

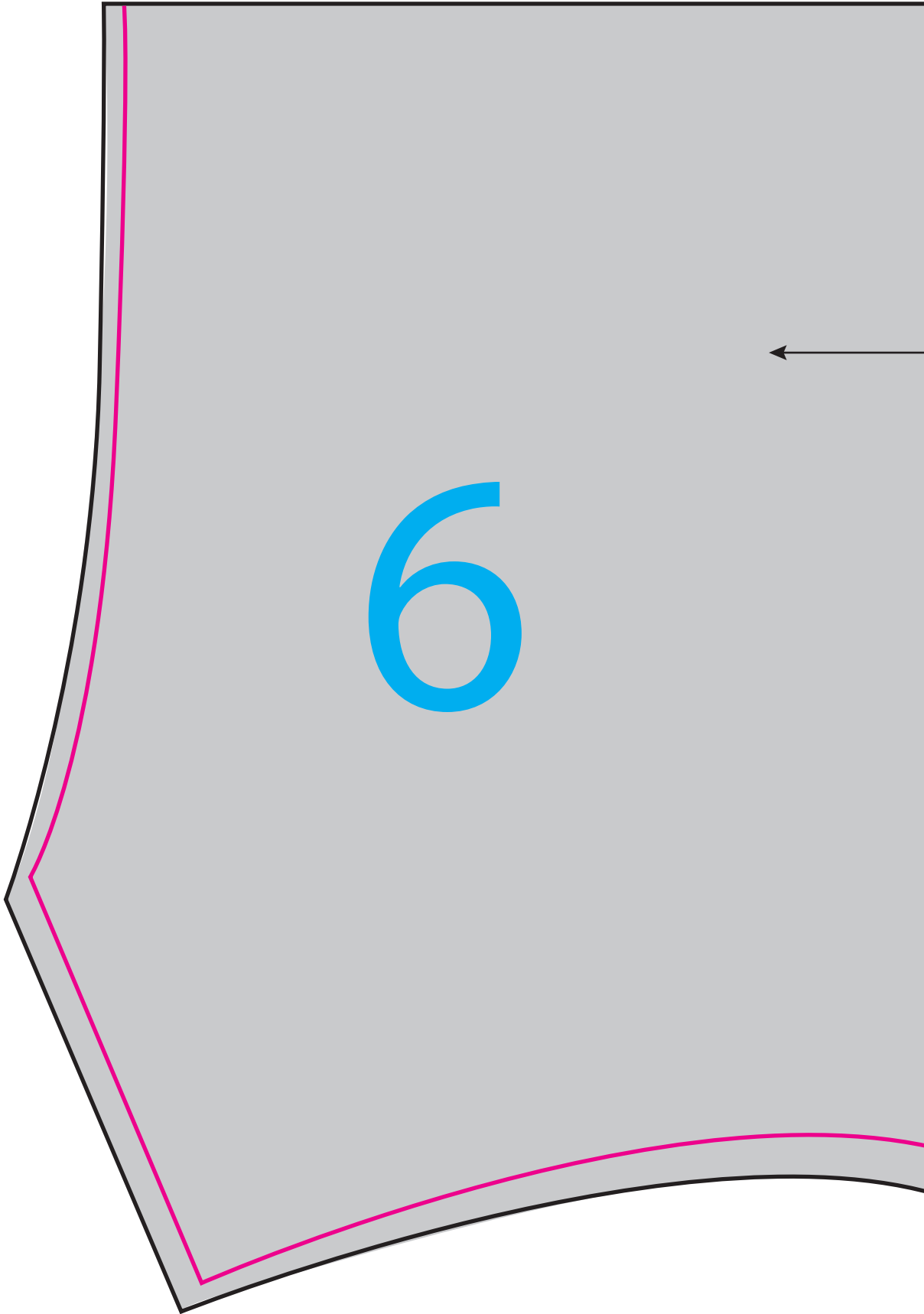


Cut here for 3/4 length sleeved tunic

Cut here for short sleeved tunic

5

6

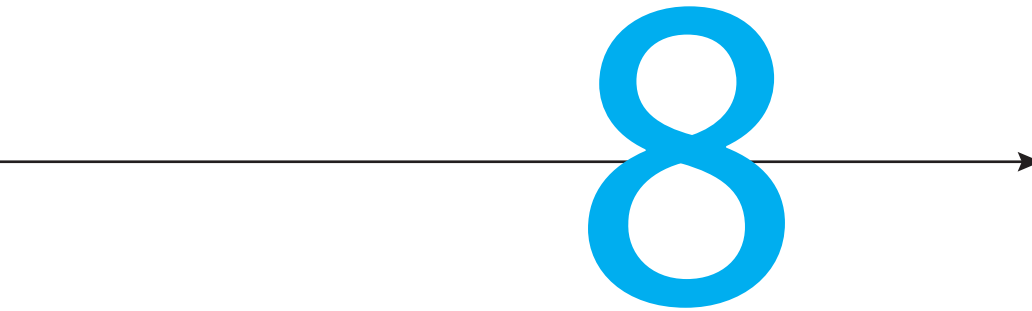


Back Dress Facing

Cut one pair in fabric



Cut the shaded area above in fabric for dress facing



8

Back Dress/Tunic

Cut one pair

Sizes 8-10, 12-14

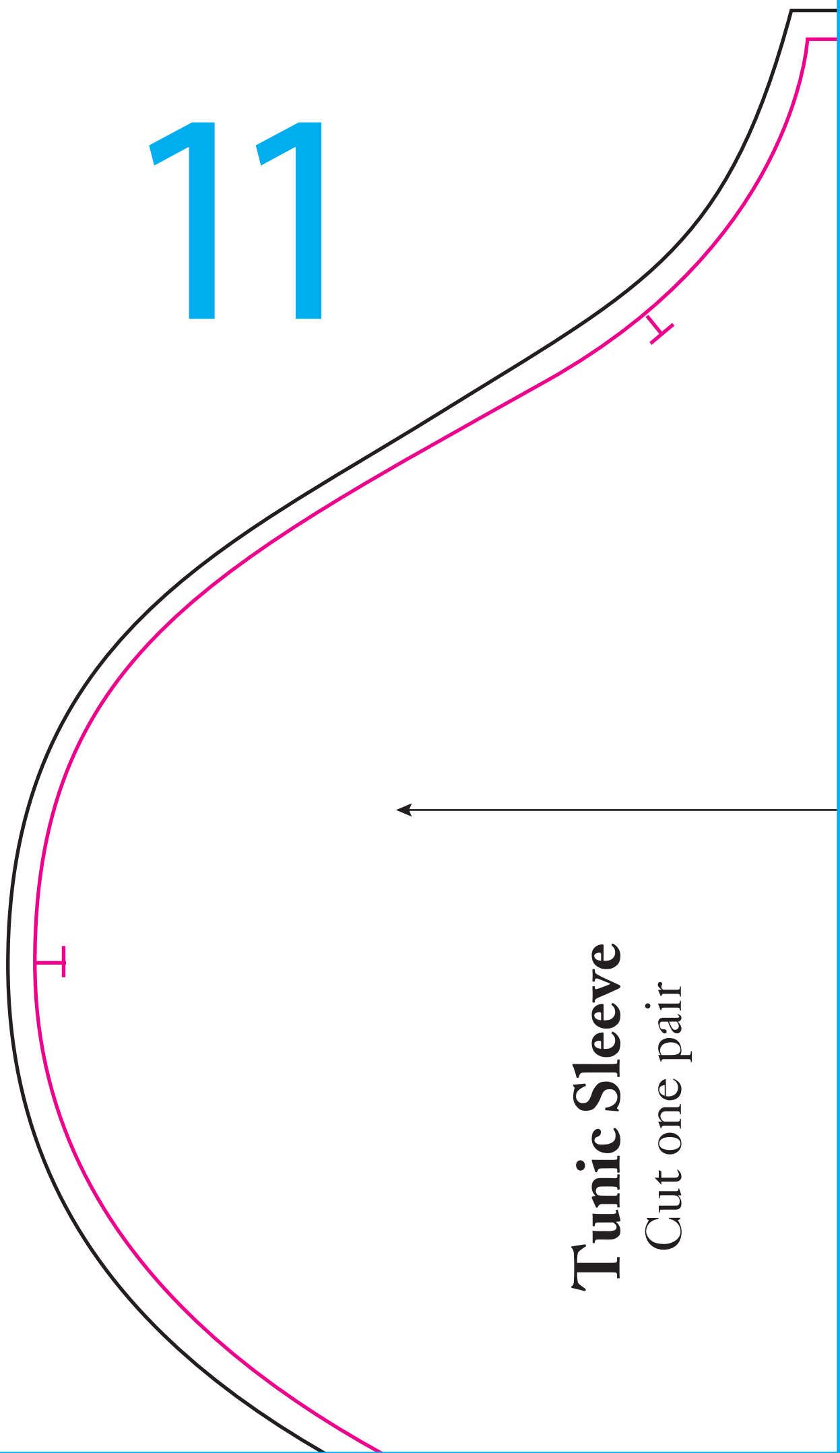
9

Cut here for 3/4 length sleeved tunic

Cut here for short sleeved tunic

10

11



Tunic Sleeve
Cut one pair

Cut the shaded area below for cuff

Cuff facing (short sleeved tunic)

Cut two

12

Cut here for short sleeved tunic

Cut the shaded area below for cuff

Cuff facing (3/4 length sleeved tunic)

Cut two

Sizes 8-10, 12-14

13

Pocket flap (short sleeved tunic)

Cut two in fabric

Cut half x two in interfacing

1cm seam allowance

fold line

14

**Pocket (3/4 length
sleeved tunic)**

Cut one
1cm seam allowance



15



16



17