

Issue 61 July 2014 Summer Stitching Special

MOTIFS & TEMPLATES



Use these guides to get started today

FIND THE TEMPLATE YOU REQUIRE ON THE CONTENTS LIST
BELOW AND JUST PRINT OUT THE PAGE OR PAGES YOU NEED
FROM YOUR PRINT MENU

In your print menu, under Size Options, be sure to select print
'Actual Size', instead of 'Fit to Page'

Page 2-16

Title: Shirred sundress

Designer: Jane Bolsover

Magazine page: 4

Page 17

Title: Camera pouch

Designer: Cecilia Hanselmann

Magazine page: 10

Page 18

Title: Flower playmat

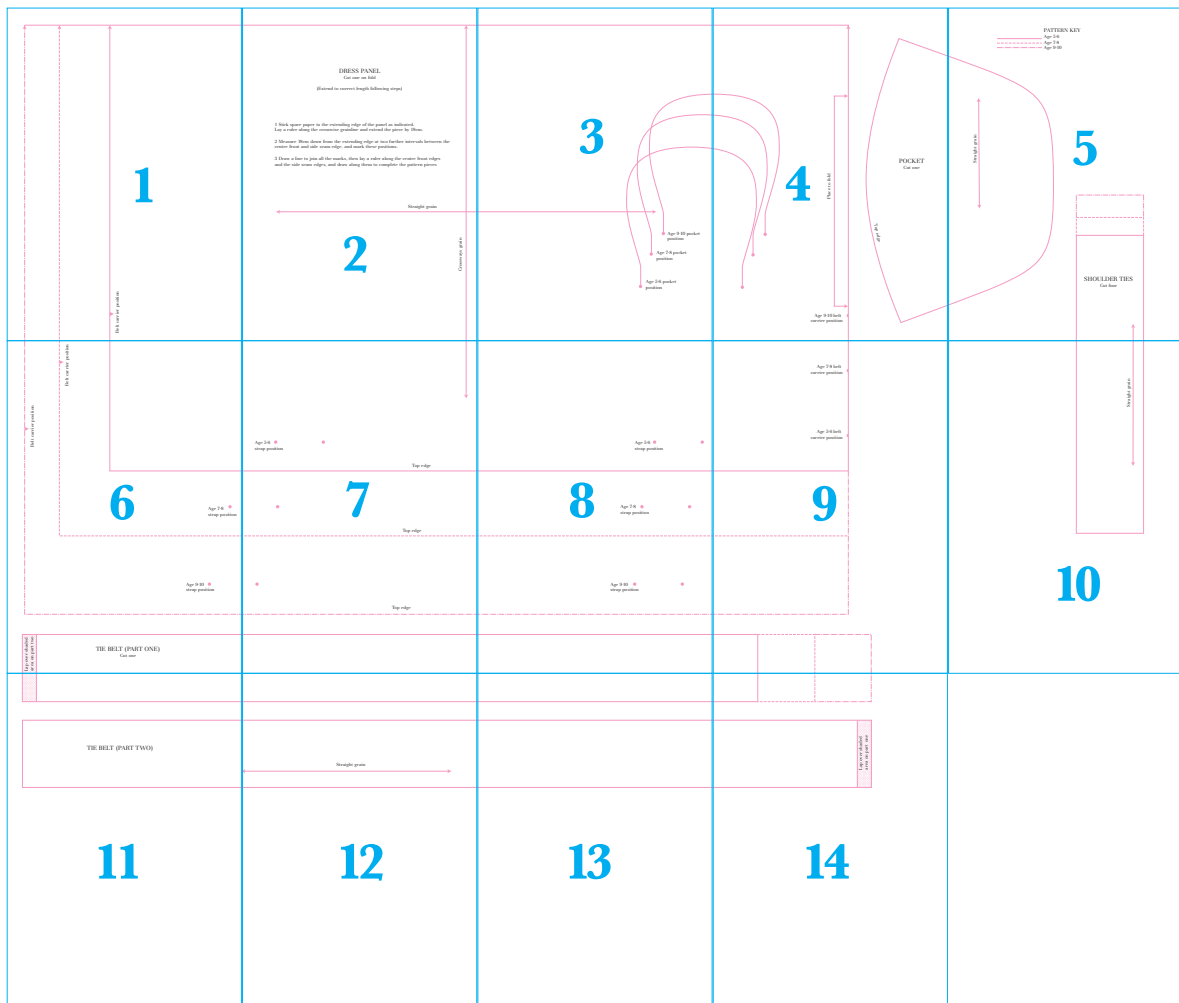
Magazine page: 12

Page 2-16

Title: Shirred sundress

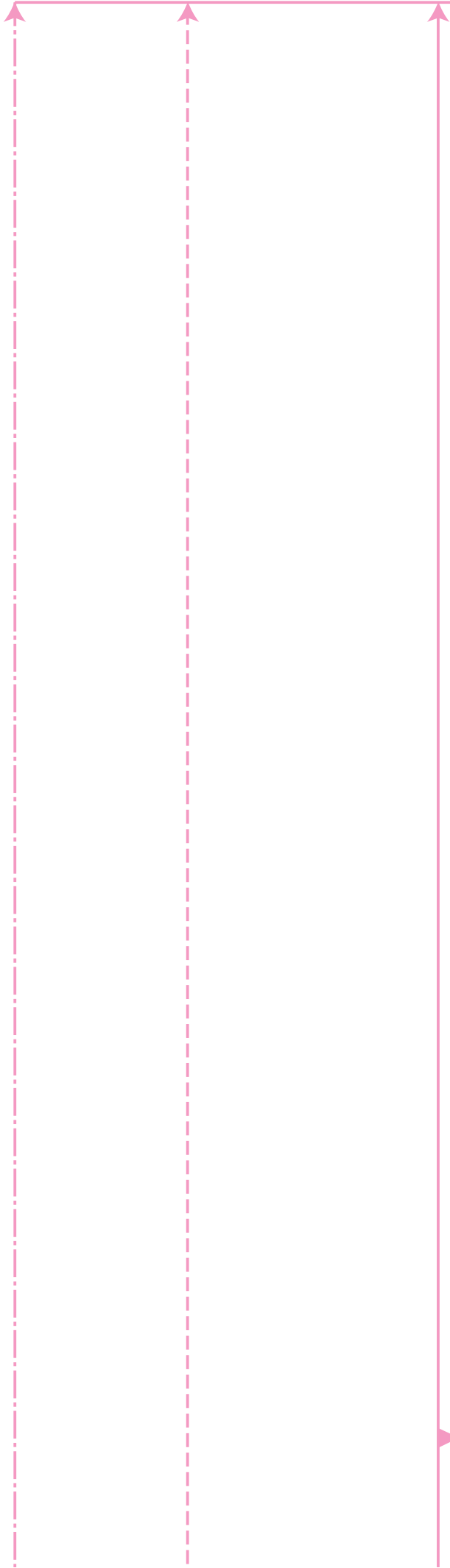
Designer: Jane Bolsover

Magazine page: 4



1

Belt carrier position



DRESS PANEL

Cut one on fold

(Extend to correct length following steps)

1 Stick spare paper to the extending edge of the panel as indicated.
Lay a ruler along the crosswise grainline and extend the piece by 18cm.

2 Measure 18cm down from the extending edge at two further intervals between the centre front and side seam edge, and mark these positions.

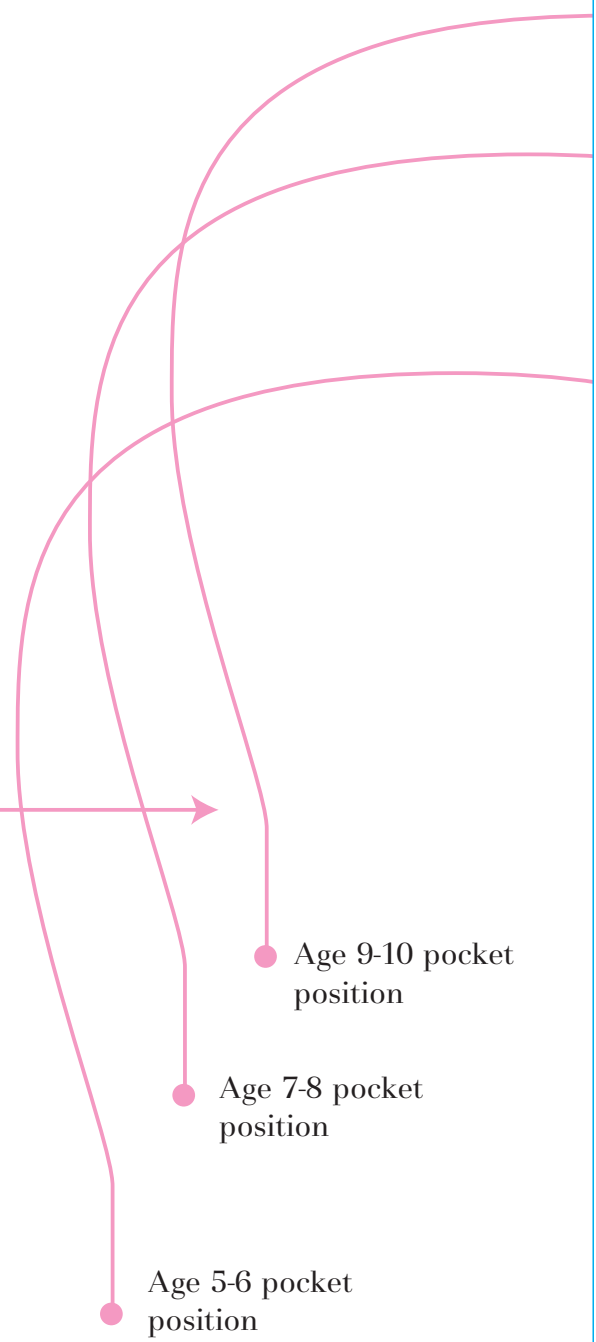
3 Draw a line to join all the marks, then lay a ruler along the centre front edges and the side seam edges, and draw along them to complete the pattern pieces

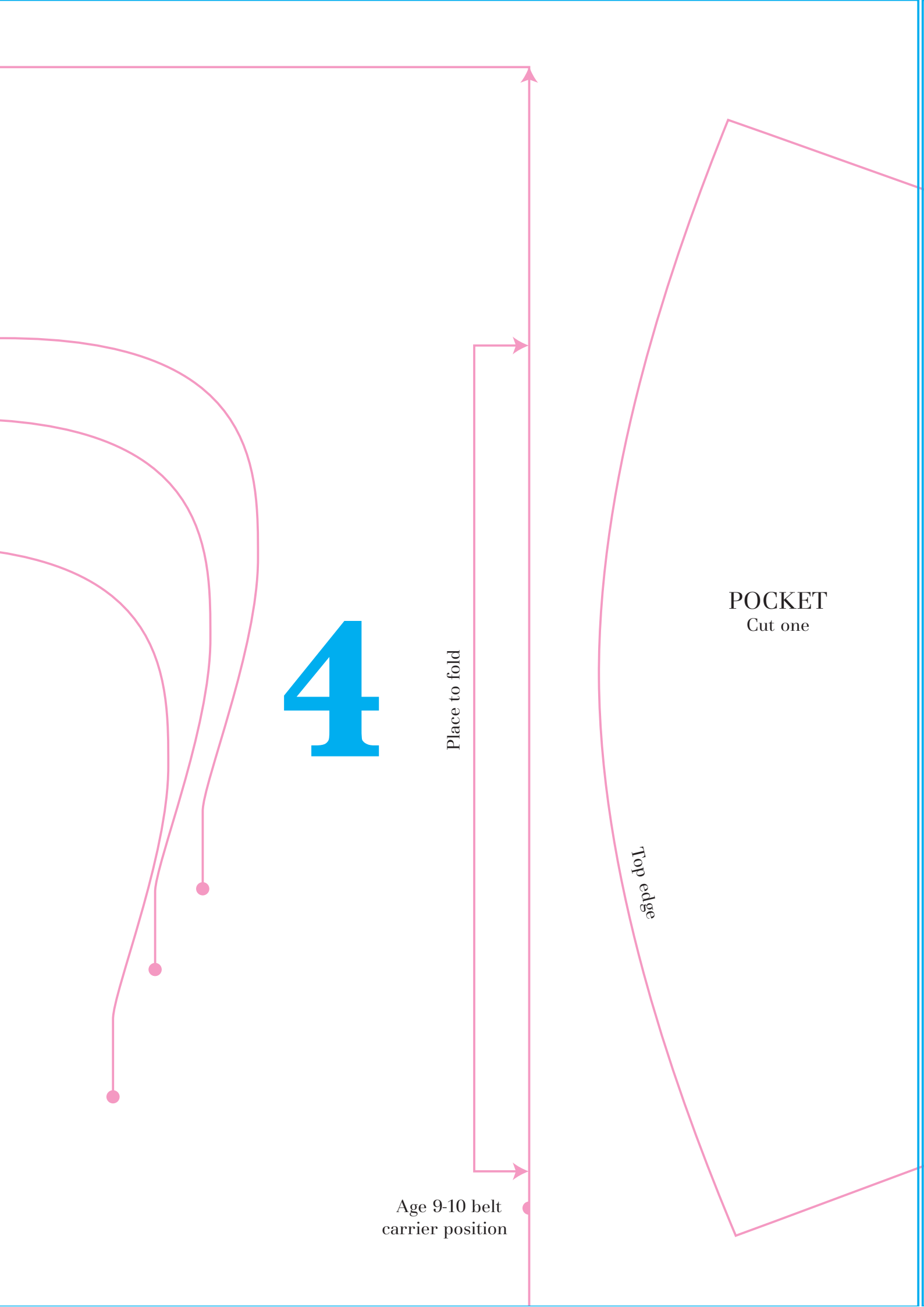
Straight grain

2

Crossways grain

3





4

Place to fold

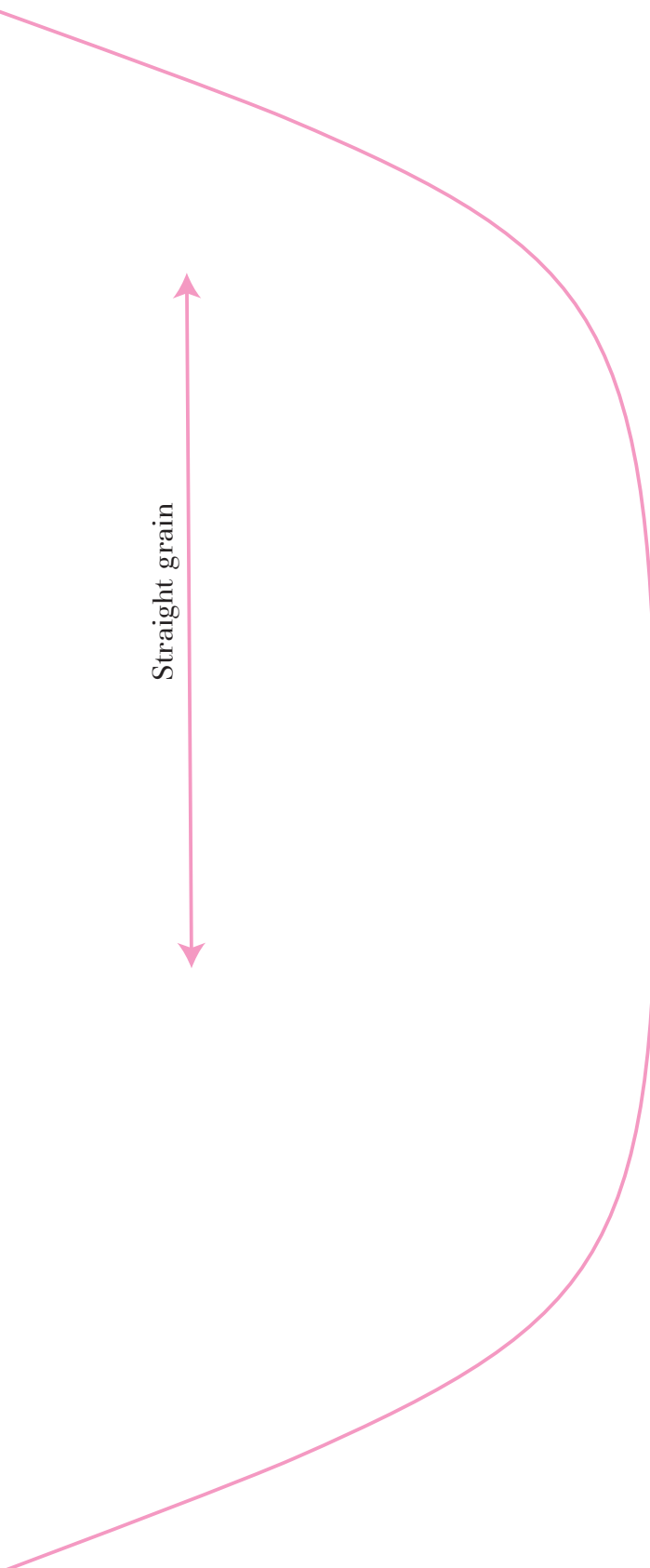
POCKET
Cut one

Top edge

Age 9-10 belt
carrier position

PATTERN KEY

- Age 5-6
- - - Age 7-8
- · - · Age 9-10



5



SHOULDER TIES
Cut four



Belt carrier position

Belt carrier position

6

Age 7-8 ●
strap position

Age 9-10 ●
strap position

Lap over shaded
area on part two

TIE BELT (PART ONE)

Cut one



Age 5-6 ●
strap position



Top edge

7



Top edge



Top edge

Age 5-6 ●
strap position

8

Age 7-8 ●
strap position

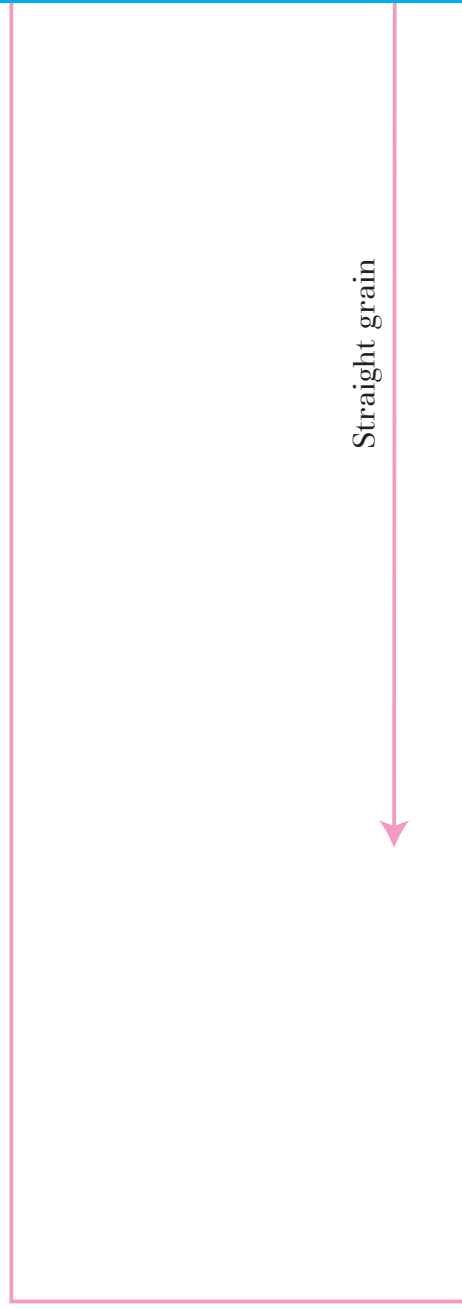
Age 9-10 ●
strap position

Age 7-8 belt
carrier position

Age 5-6 belt
carrier position

9

10





TIE BELT (PART TWO)

11

Straight grain



12

13

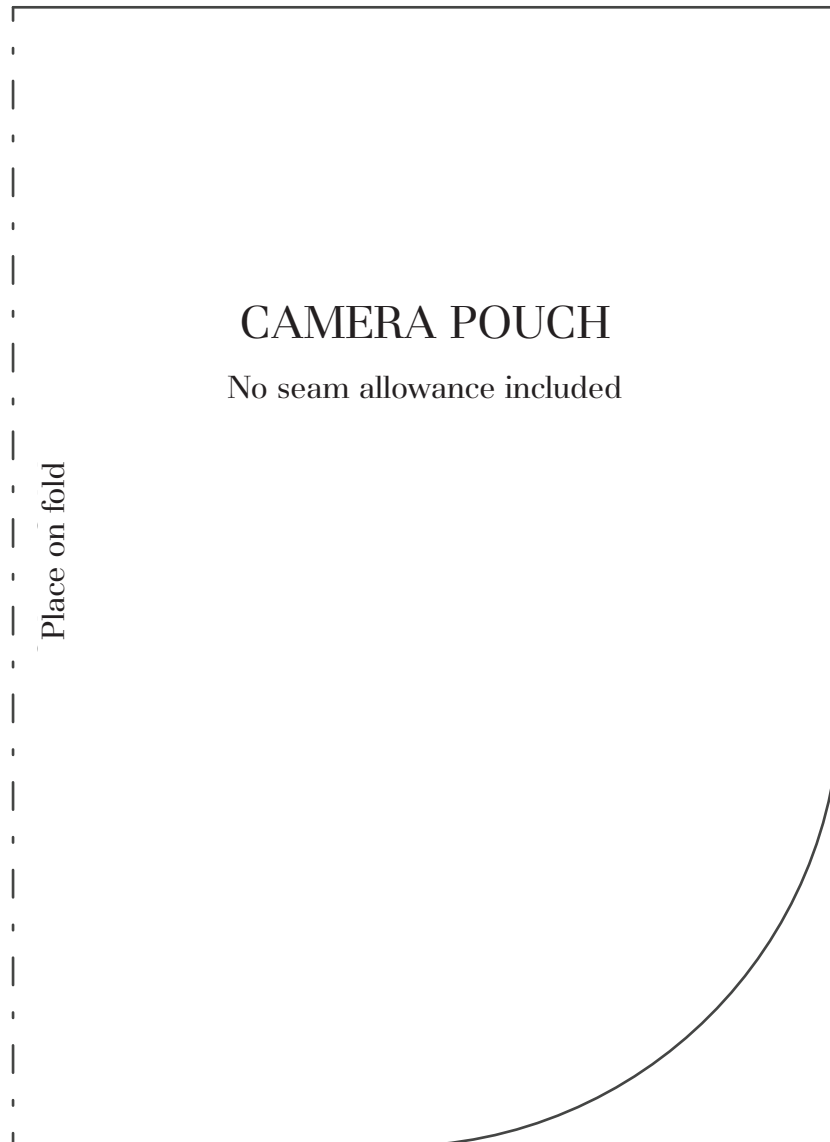
14

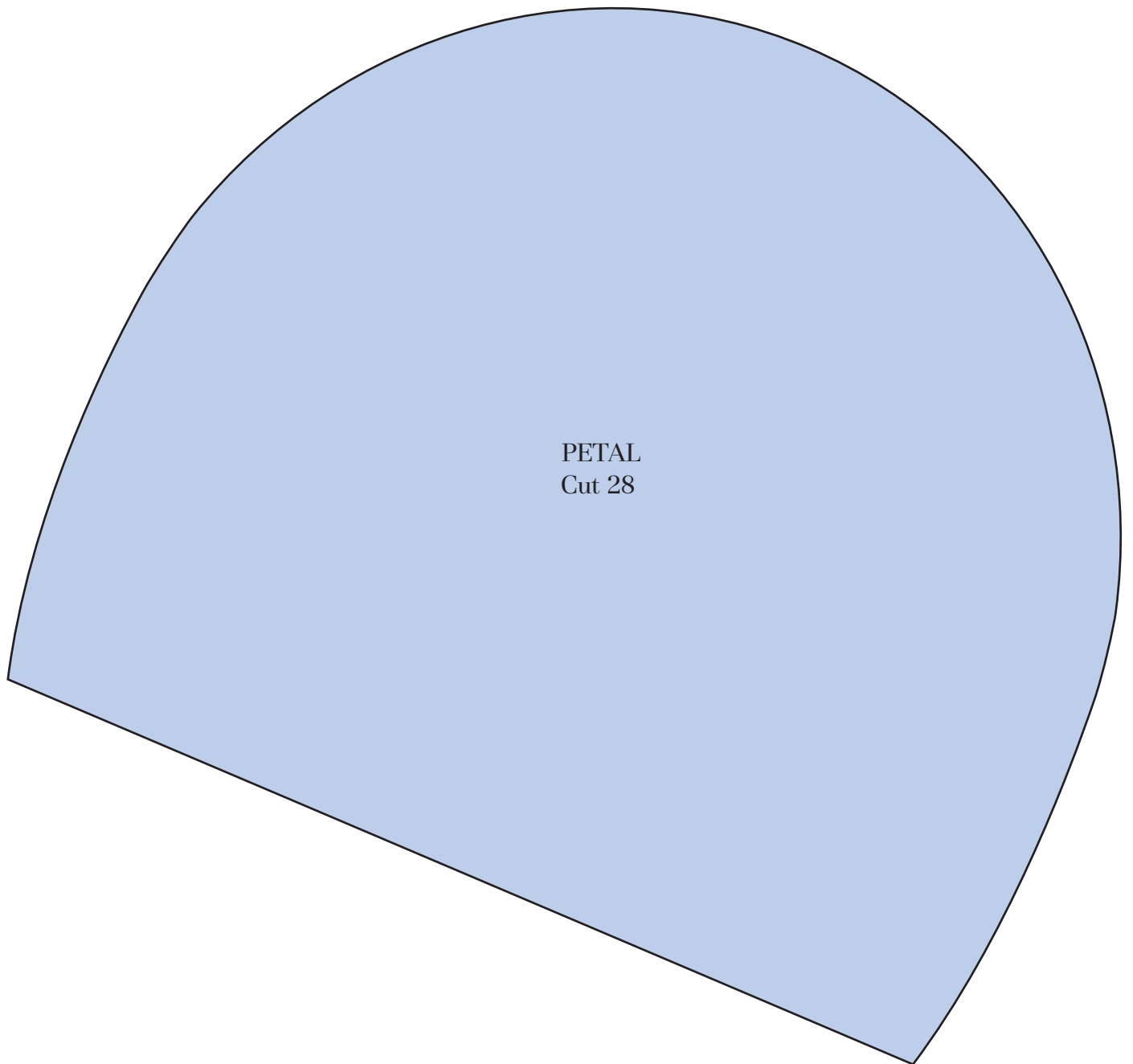
Lap over shaded
area on part one

Title: Camera pouch

Designer: Cecilia Hanselmann

Magazine page: 10





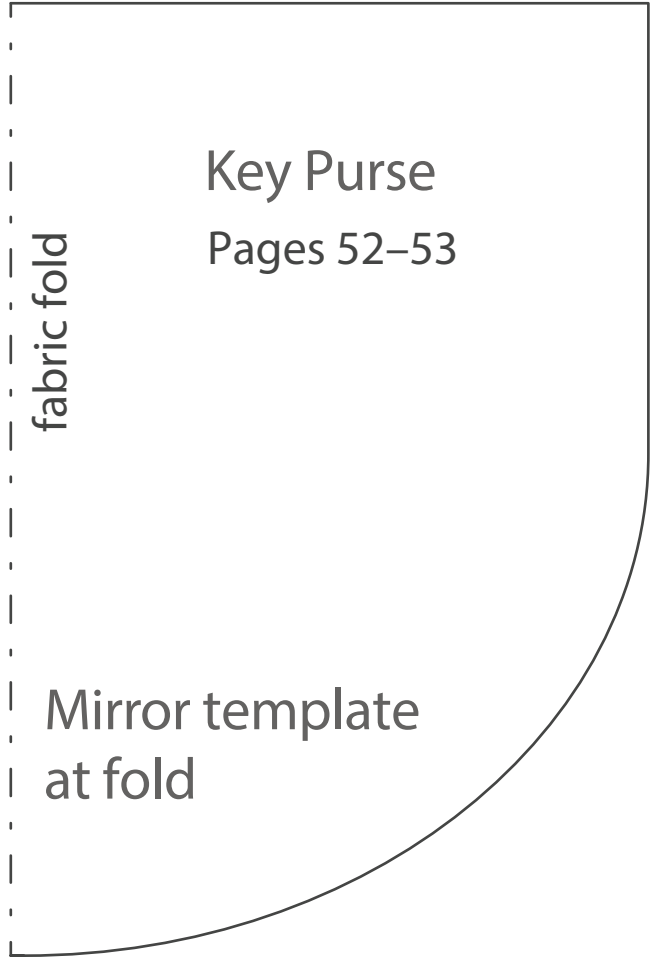
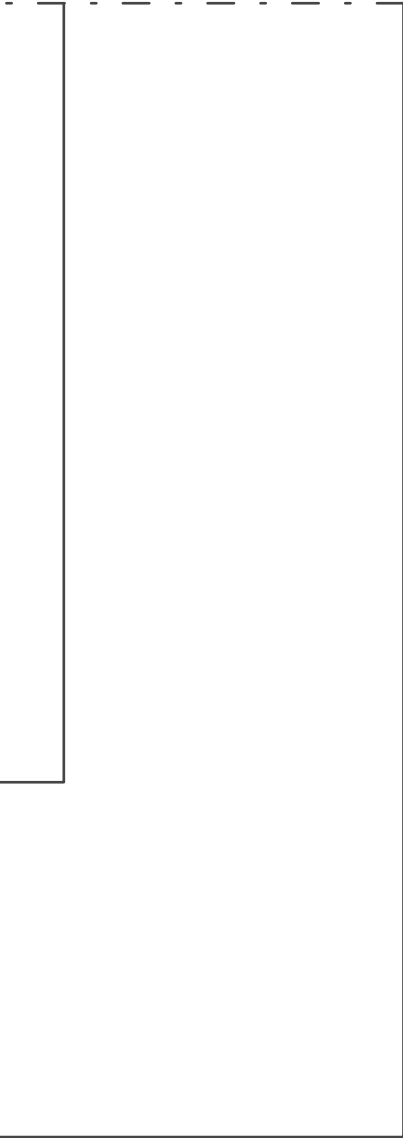
PETAL
Cut 28

Double template
at fold

Shoulder Bag
Pages 56–57
Template A (Outside)
No seam allowance

fabric fold

Shoulder Bag
Pages 56–57
Template B (Outside Pocket)
No seam allowance



Key Purse
Pages 52-53

fabric fold

Mirror template
at fold