

DOWNLOAD
PATTERNS
ONLINE

SEW DRESSMAKING & STYLE



STEP OUT IN STYLE IN
CLAIRE-LOUISE HARDIE'S

LACE PENCIL SKIRT

UK
SIZES
8-20

A fitted skirt is the perfect blank canvas to showcase an amazing lace fabric, and with no front darts or back vent, there's nothing to disrupt the beauty of the overlay in this double layered garment. Play around with colour combinations or level of detail in the lace to create a unique item you can wear to any occasion.

Photography: Jenni Hare

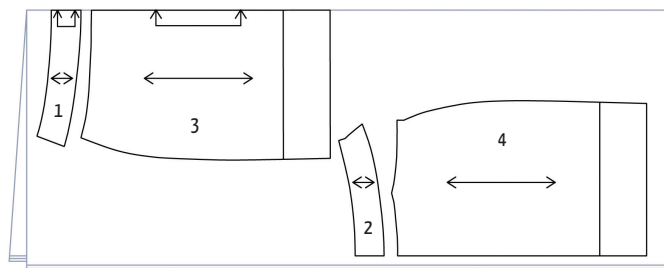
DOWNLOAD
PATTERNS
ONLINE

ESSENTIALS

Lace fabric, 150cm wide, 80cm or 114cm wide, 130cm
Medium weight satin lining, 150cm wide, 80cm or 114cm wide, 140cm
Coordinating concealed zip, 23cm
Very lightweight fusible interfacing, 20cm
Coordinating sewing machine thread

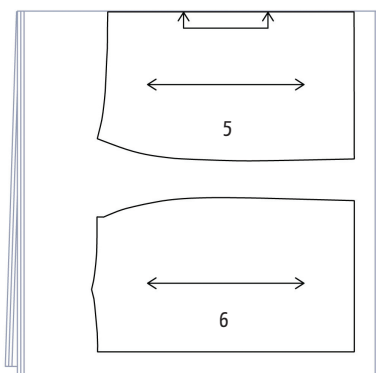
Dimensions:

Size	8	10	12	14	16	18	20
Waist	71	76	81	86	92	98	104
Hip	93	98	103	108	114	120	126



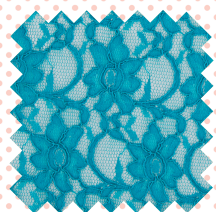
Cutting guide

- 1 Front facing, cut on one fold from lining and interfacing
 - 2 Back facing, cut two from lining and interfacing
 - 3 Underskirt front, cut one on fold from lining
 - 4 Underskirt back, cut two from lining
 - 5 Outer skirt front, cut one on fold from lace
 - 6 Outer skirt back, cut two from lace
- A 1.5cm seam allowance is included throughout unless otherwise stated



“Make up the underskirt first, then fit it and transfer any adjustments onto the lace pieces. Lace fabric doesn’t like being unpicked, so this way you can avoid having to sew it before trying it on”

LOVE IT... BUY IT!



Scalloped edged lace

Classic and elegant, this is the perfect choice for this skirt, priced £7.99 per metre, www.whitelodgefabric.com, 01630 620387.

SEW A SKIRT

1 Download the pattern from www.sewmag.co.uk, print, and piece together. Trace then cut out all the pieces following the cutting guide and transfer markings. When placing the lace skirt pattern pieces on the fabric, carefully match up any horizontal motifs across the side seam. Lay the edge of the pattern just above the scalloped edge.

2 Carefully staystitch the waistline of the three lace skirt pieces, sewing 1cm from the edge. Repeat on the three lining skirt pieces. Make up the inner lining shell by pinning and sewing the darts into the two back underskirt pieces. Press them towards the side seams.

3 With right sides together, matching up the notches, pin and stitch the underskirt front to the underskirt back pieces at the side seams. Neaten the raw edges and press the seams open.

4 Pin the centre back seam from the hem up to the bottom of the zip opening. Try the skirt on and check the fit. Make any necessary fitting adjustments, then transfer them to the lace pieces.

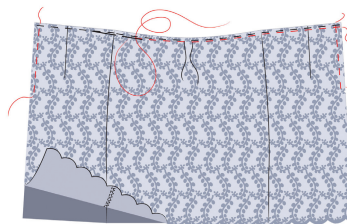
5 Sew the darts into the two back sections of lace in the same way as for the underskirt. If the seam allowance of the darts looks bulky when pressed, follow the instructions for a hairline seam, (see Crash Course). Pin and stitch the outer skirt front and back pieces at the side seams. Neaten the raw edges and press the seams.

6 Lay the lace layer over the underskirt, both right sides up, making sure that the side seams and darts line up. Pin or tack in place. Hand tack around the opening for the zip and along the waistline, stitching 1cm from the edge [1].

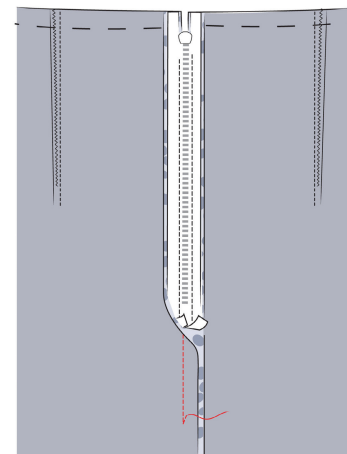
7 Sewing through both skirt layers, line up the top of a concealed zip 1.5cm below the cut edge of the waistline and insert it. Tuck the bottom of the zip away from the seam and sew the centre back seam for 7cm below the bottom of the fastening, making sure you back stitch at each end of the seam [2].

8 Before you sew the rest of the back seam, it's important to release the lace from the lining layer. Snip into the seam allowance of the lace, making

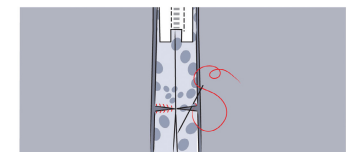
1



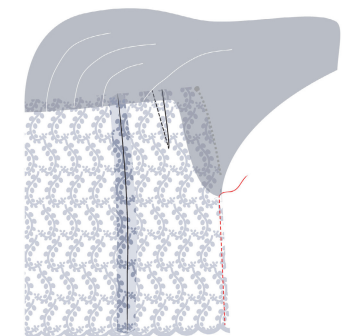
2



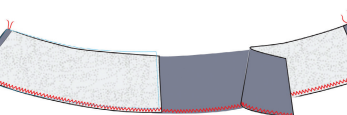
3



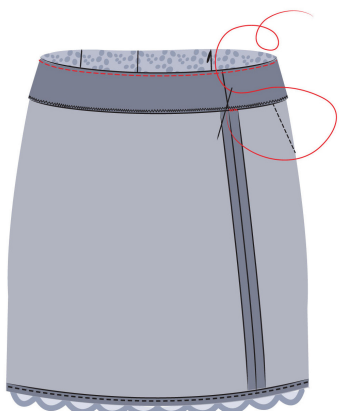
4



5



6



CRASH COURSE...

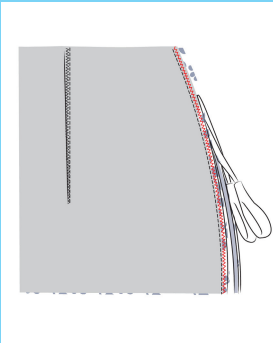
hairline seams

A hairline seam is one that is stitched, zig zagged, then trimmed. This type of seam is a really good choice for most lace or sheer fabrics. As any seam and finish is visible through the lace, you need to use one that creates a light finish.

1 With right sides together, matching up the notches, pin and stitch the front to the back pieces at the side seams, using a 1.5cm seam allowance.

2 Stitch the seam again about 3mm from the first, using a narrow zig zag stitch. Trim the seam allowance away close to the stitches.

3 Press the seam flat, then carefully to one side, making sure you do not overstretch the lace as you press.



sure you do not get too close to the stitches. Over stitch around the snipped edges by hand to strengthen the seam [3].

9 Pull the underskirt up and away, and machine the rest of the lace centre back seam below the snip. Repeat on the underskirt layer, sewing from the bottom of the zip to the hem [4].

10 Decide how much of the scalloped hem you'd like to see. As a general guide, the hemline of the lining should sit at the top edge of the lace scallop. However, you can have a shallower or deeper lace edge if you'd prefer.

11 Carefully iron lightweight interfacing onto the back of the facing pieces. This is optional, as if you have a very light lace fabric, the interfacing can make the facing noticeable. With right sides together, pin then stitch the front facing to the back pieces at the side seams, then press them open.

12 Neaten the raw lower edge of the facing with either a zig zag or an overlock stitch [5]. Attach the facing to the waistline, under stitch and attach to the zip. Hand stitch the facing to the side seams to finish [6].

Stitch it with... Brother Innov-is 20LE

Stitch up garments like these in no time with Brother's easy to use computerised machine from the Innov-is series. With 40 built-in stitches, there's plenty of choice and the electronic jog dial makes selection simple. The automatic needle threader and quick set top loading bobbin make getting started quick and easy, and the LCD screen shows you everything you need to know, including stitch type and length. Slide type speed control and the start/stop button mean that the machine can be used with or without foot control. There's also five styles of one-step buttonhole so you're always spoilt for choice.

Priced £329, visit www.brothersewing.co.uk or call 0333 777 4444 to find your nearest stockist.



brother
at your side

Issue 70 April 2015

MOTIFS & TEMPLATES



Use these guides to get started today

FIND THE TEMPLATE YOU REQUIRE ON THE CONTENTS LIST
BELOW AND JUST PRINT OUT THE PAGE OR PAGES YOU NEED
FROM YOUR PRINT MENU

In your print menu, under Size Options, be sure to select
to print 'Actual Size', instead of 'Fit to Page'

Page 2-20

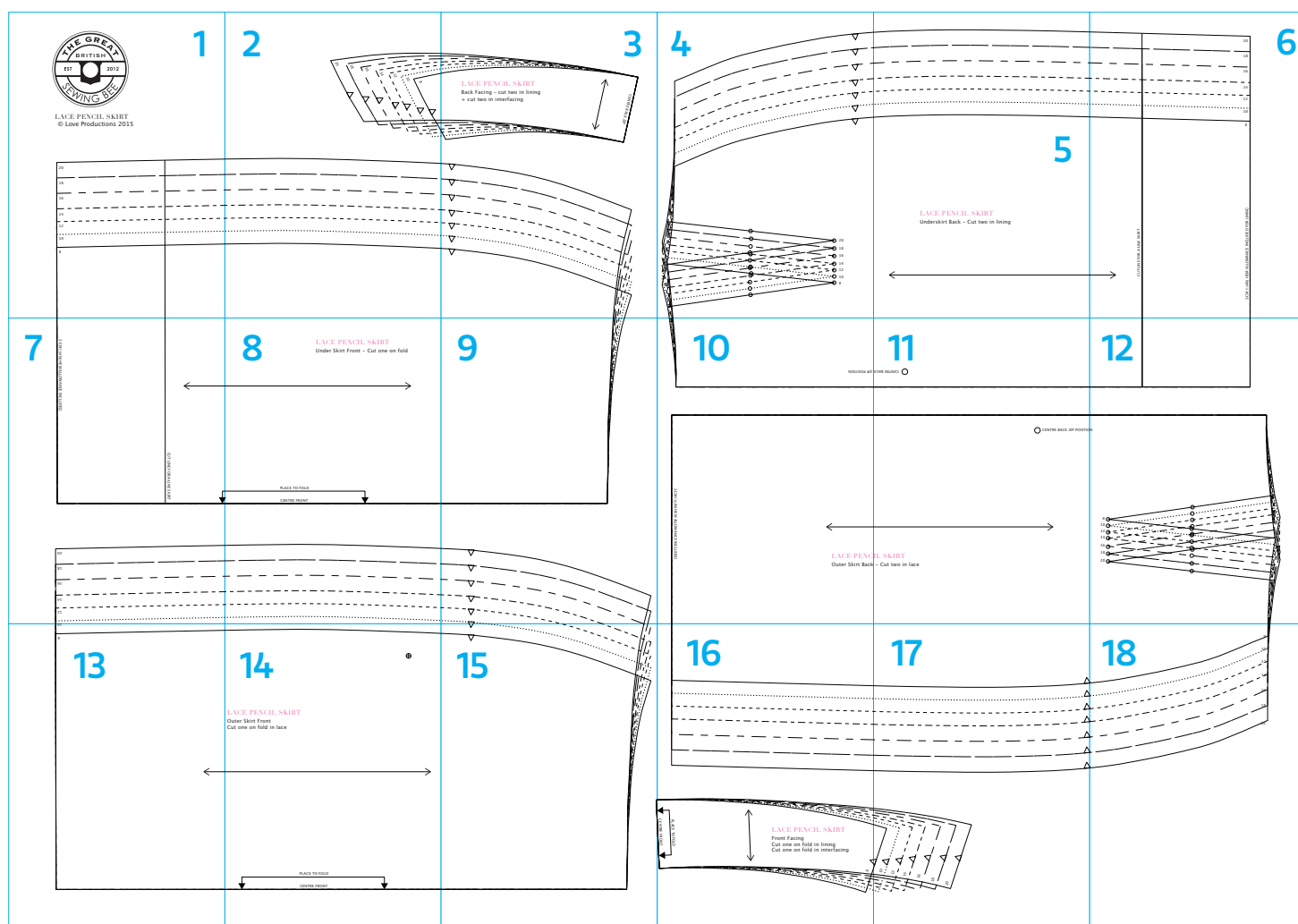
Title: Lace pencil skirt

Designer: Claire-Louise Hardie

Magazine page: 19

© Aceville Publications Ltd.

All projects, templates and patterns are for personal home use only and cannot be sold or
used for commercial purposes.



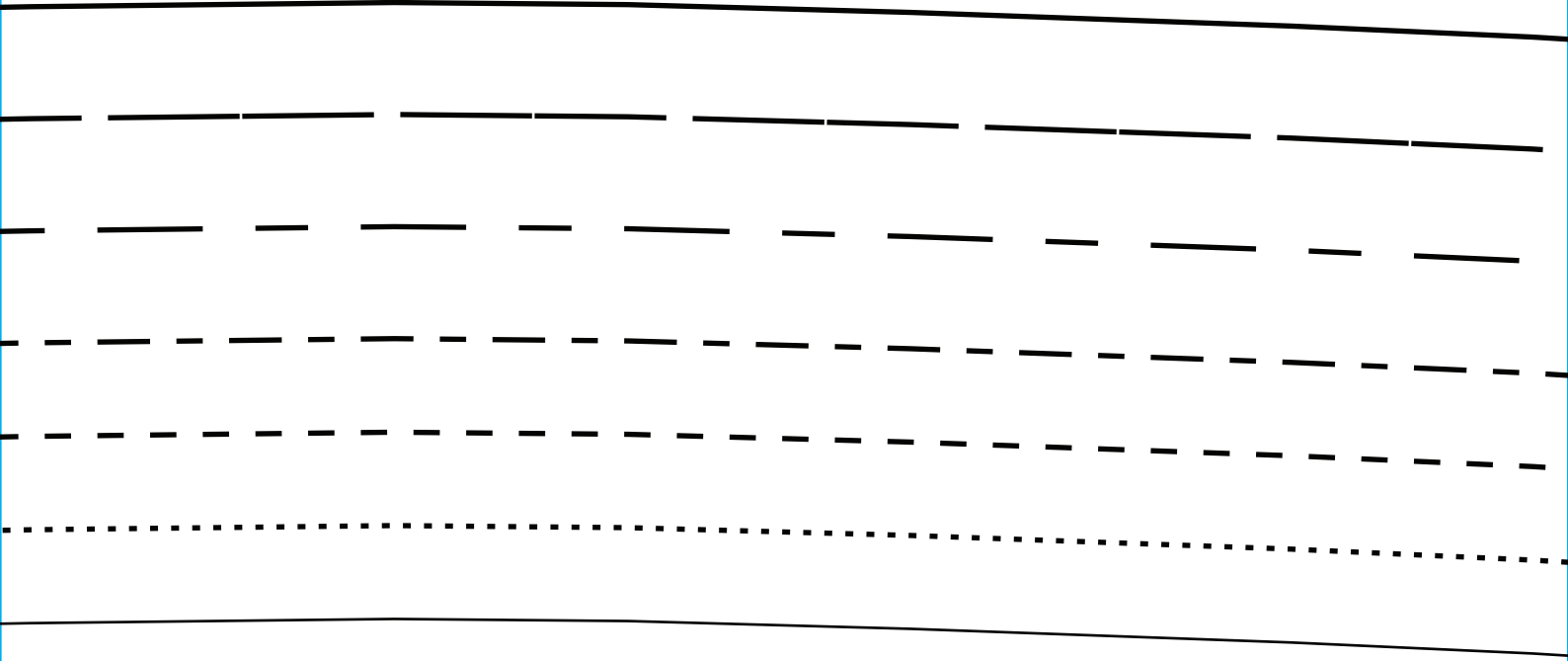
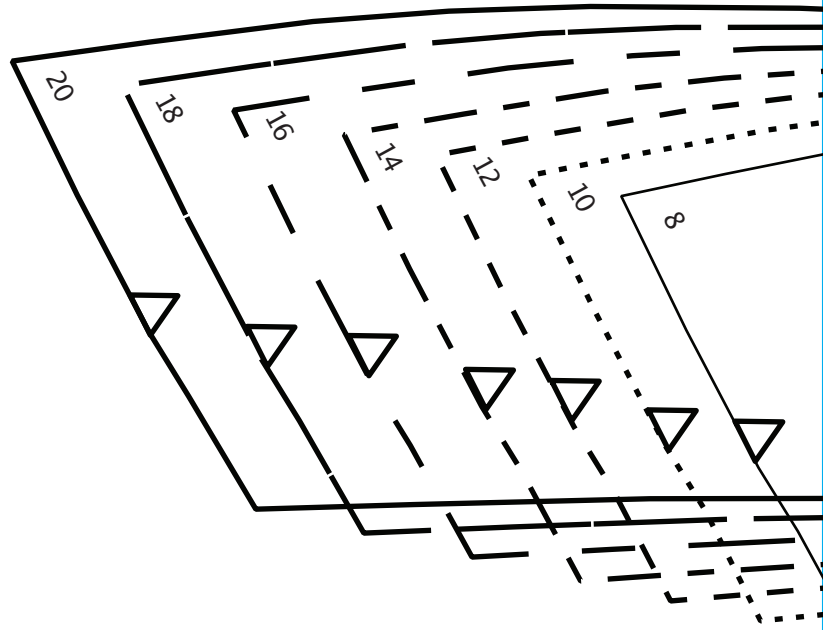


LACE PENCIL SKIRT

© Love Productions 2015

20	
18	
16	
14	
12	
10	
8	

2

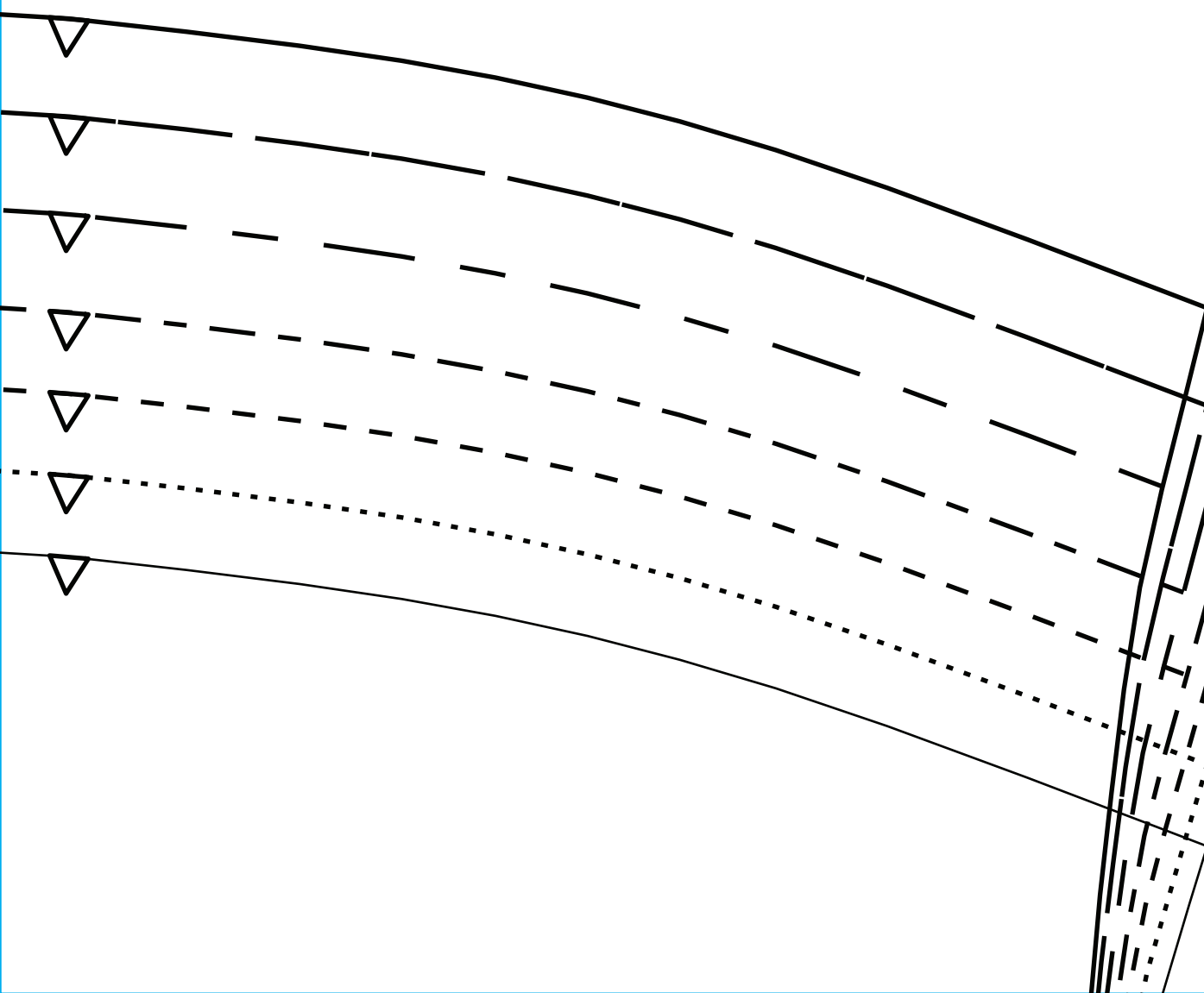


LACE PENCIL SKIRT

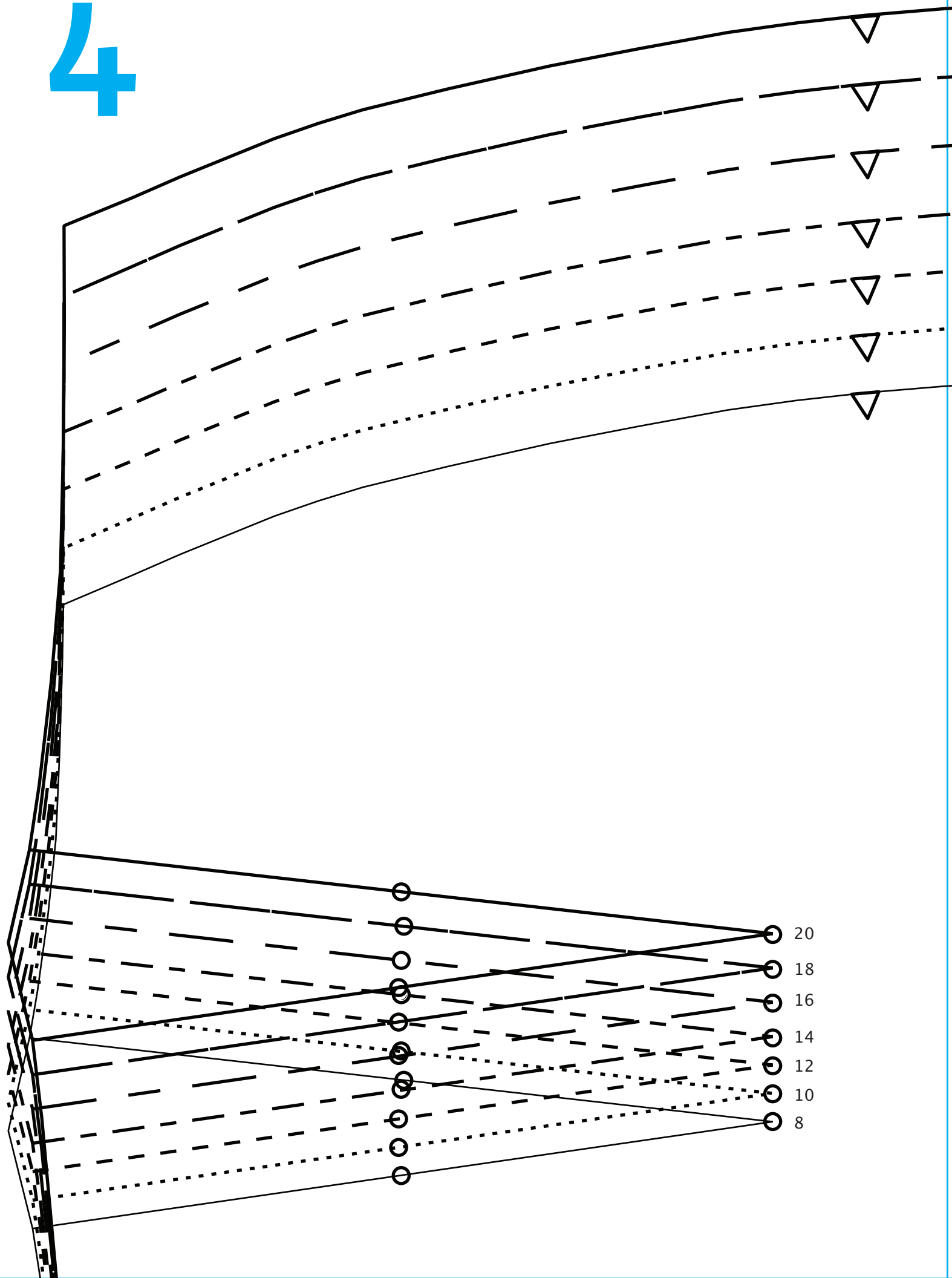
Back Facing - cut two in lining
+ cut two in interfacing

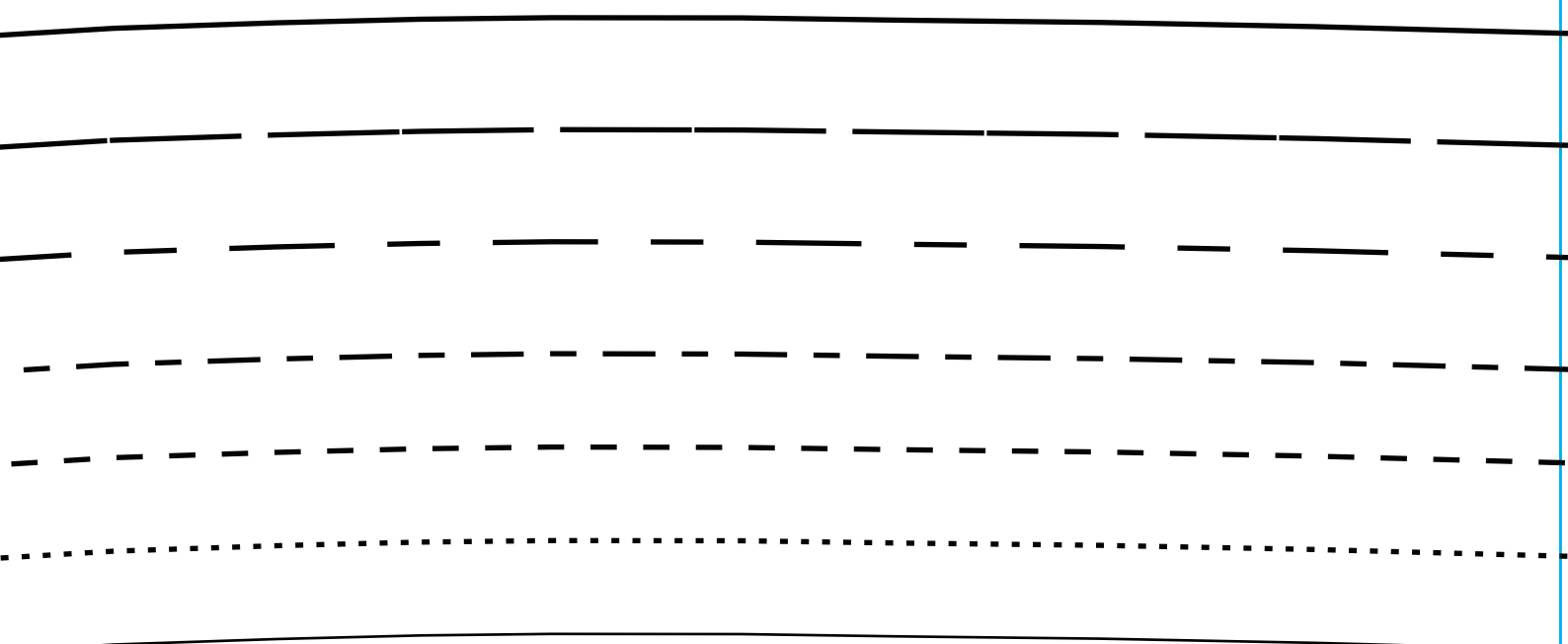


CENTRE BACK ZIP



4

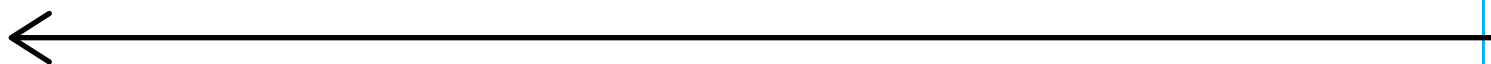


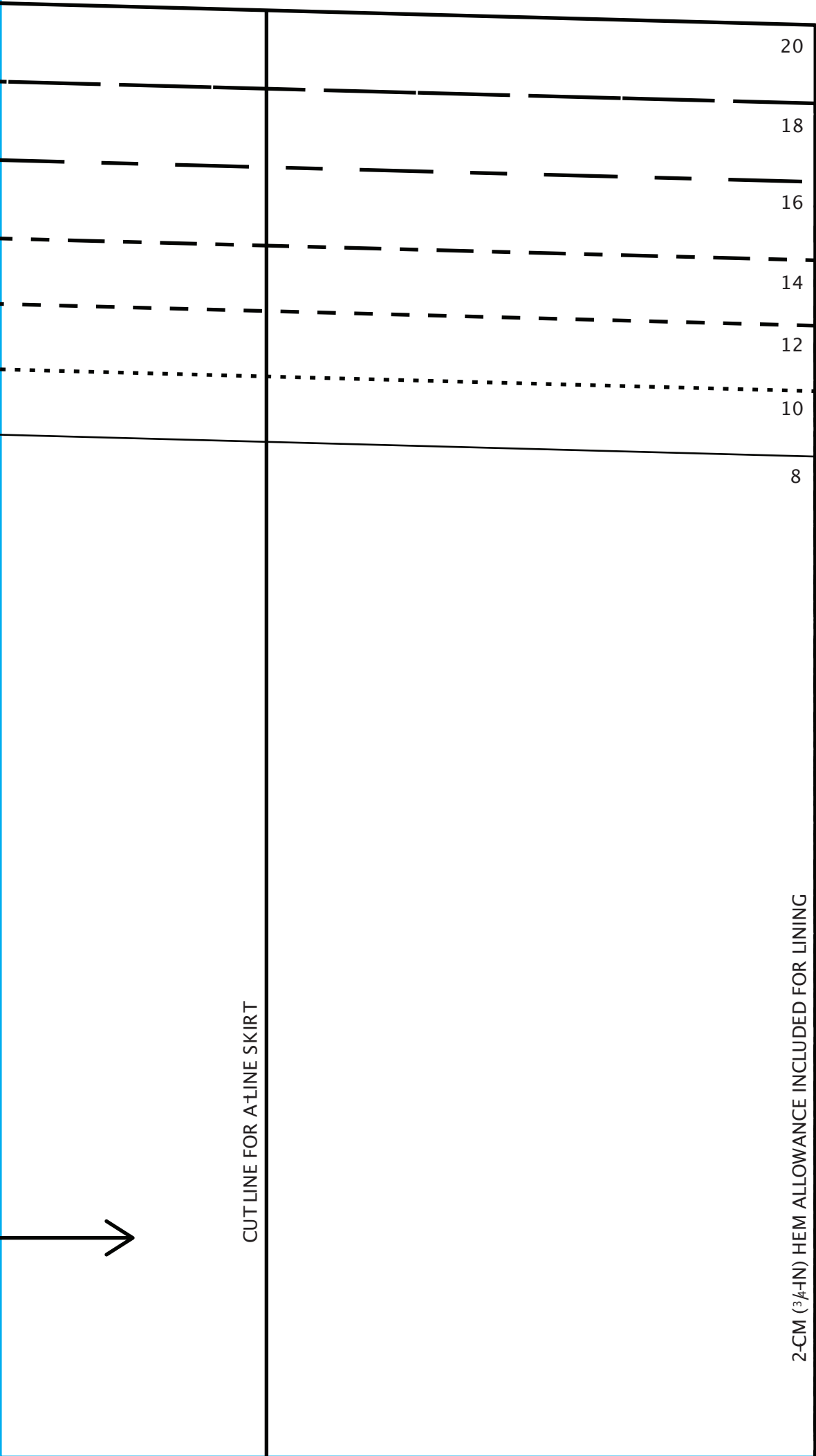


5

LACE PENCIL SKIRT

Underskirt Back – Cut two in lining







CUT LINE FOR A-LINE SKIRT

2-CM (3/4-IN) HEM ALLOWANCE INCLUDED

7

20

18

16

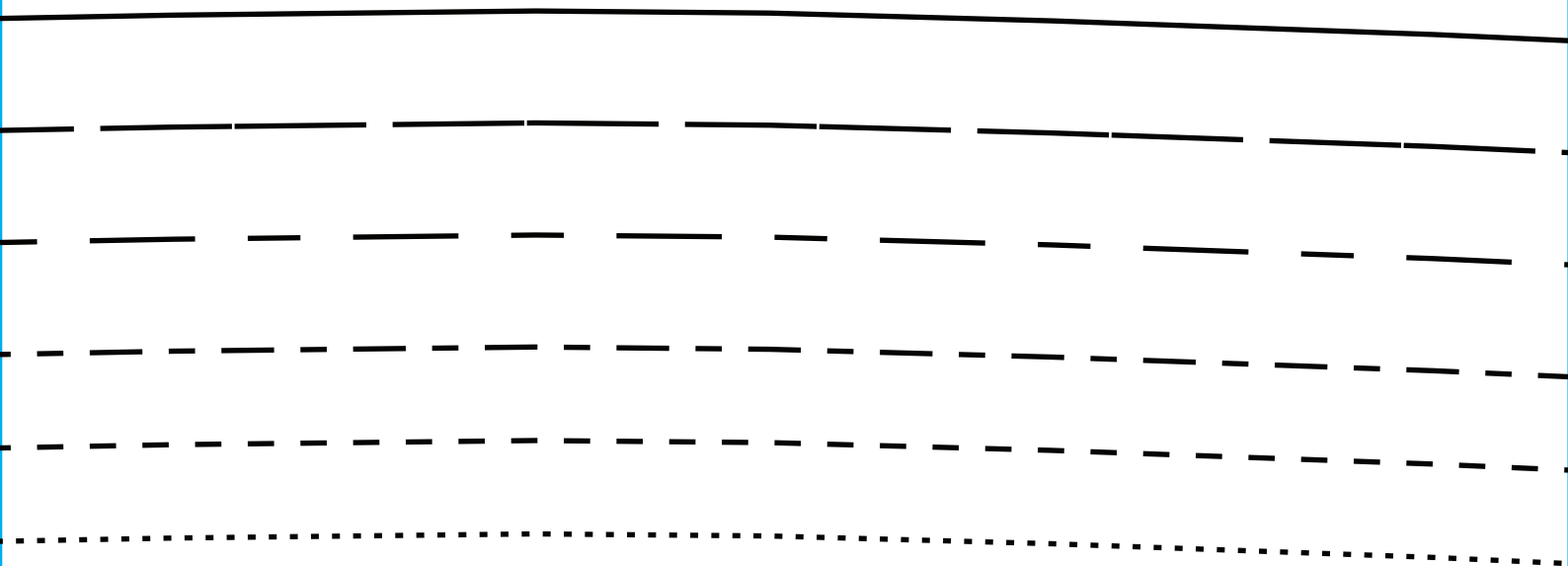
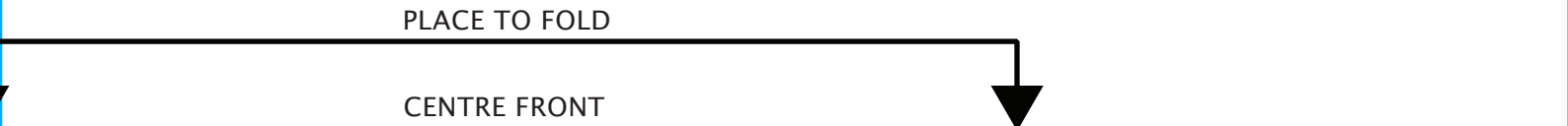
14

12

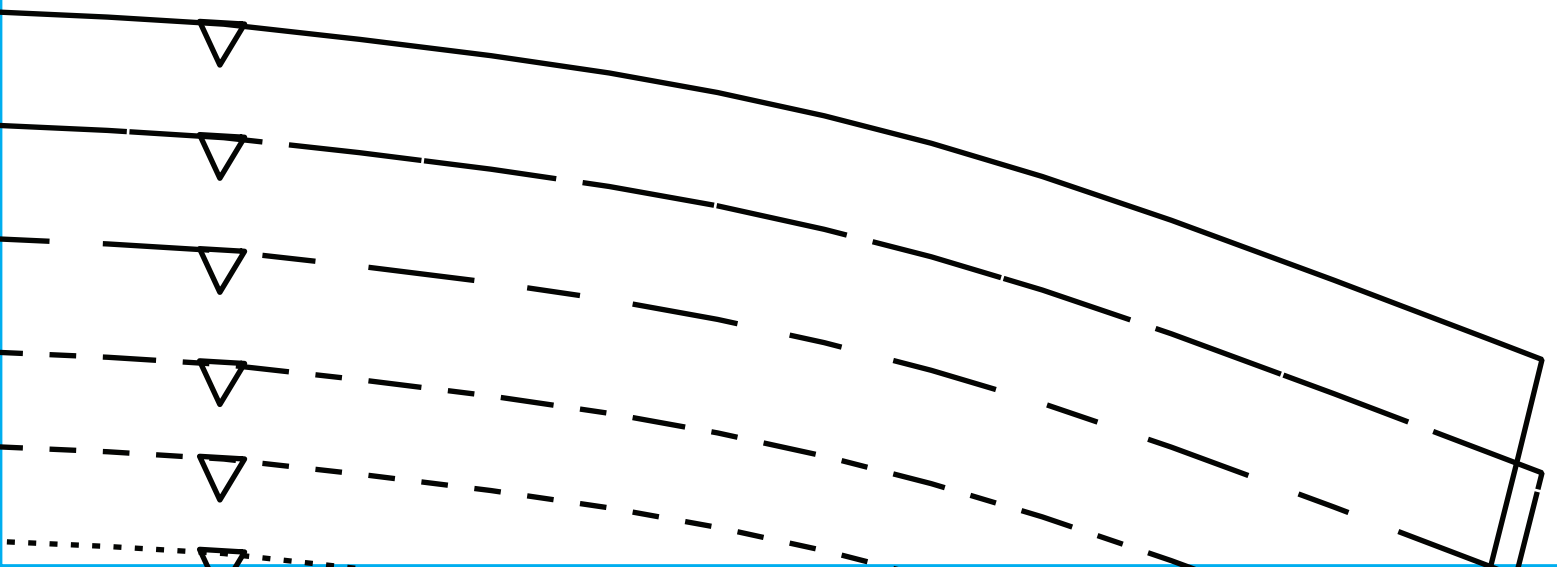
8

LACE PENCIL SKIRT

Under Skirt Front – Cut one on fold



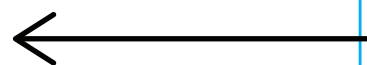
9



10

ZIP POSITION

2-CM (3/4-IN) HEM ALLOWANCE INCLUDED

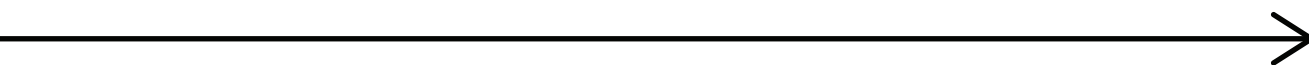


LACE PENCIL
Outer Skirt Back

11

○ CENTRE BACK

○ CENTRE BACK ZIP POSITION

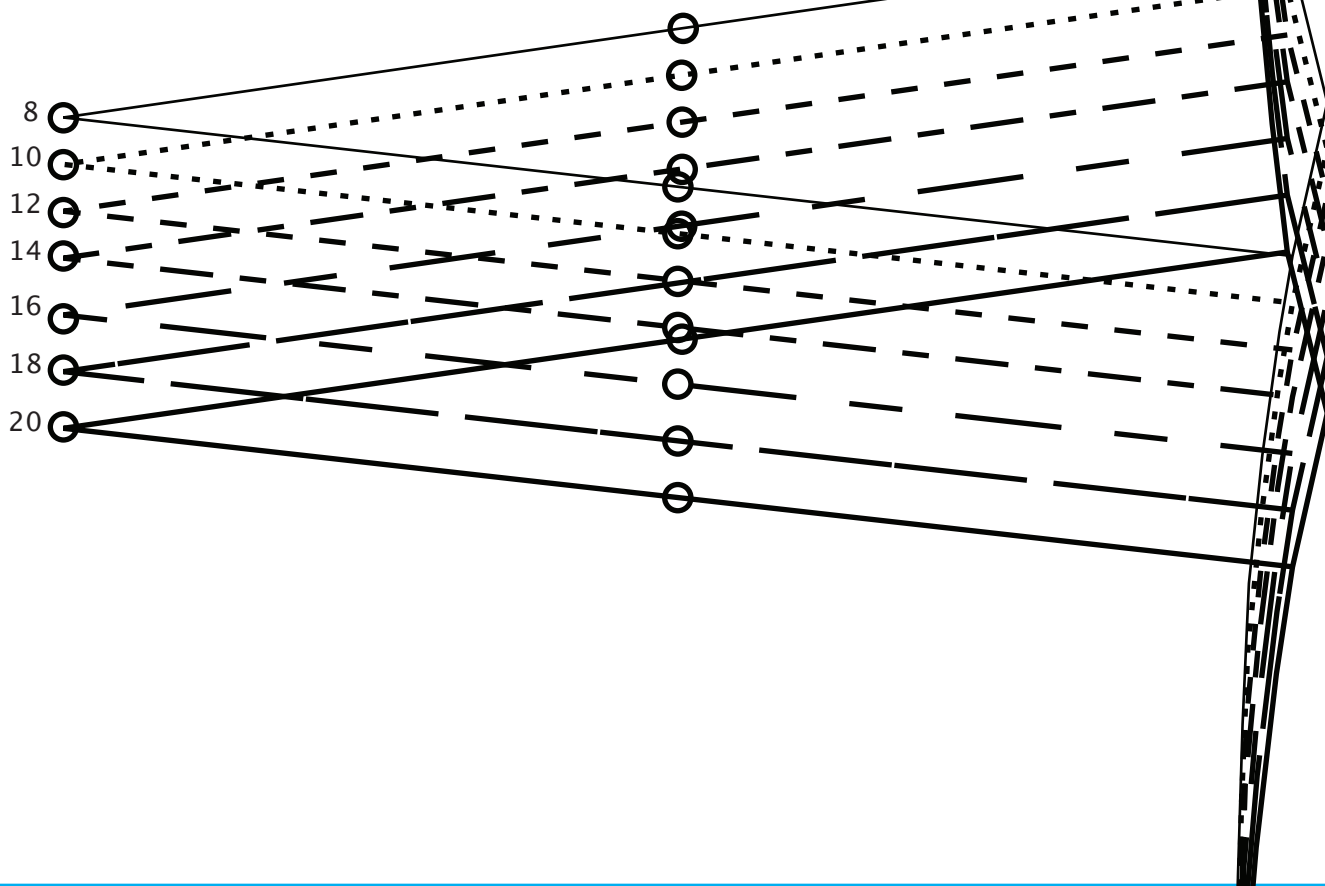


LACE SKIRT

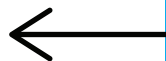
- Cut two in lace

12

N



13

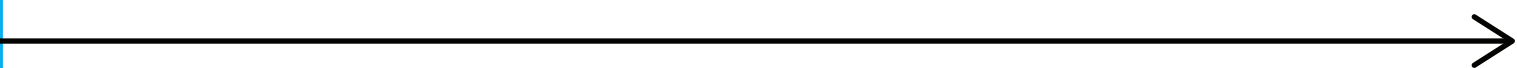


14



LACE PENCIL SKIRT

Outer Skirt Front
Cut one on fold in lace

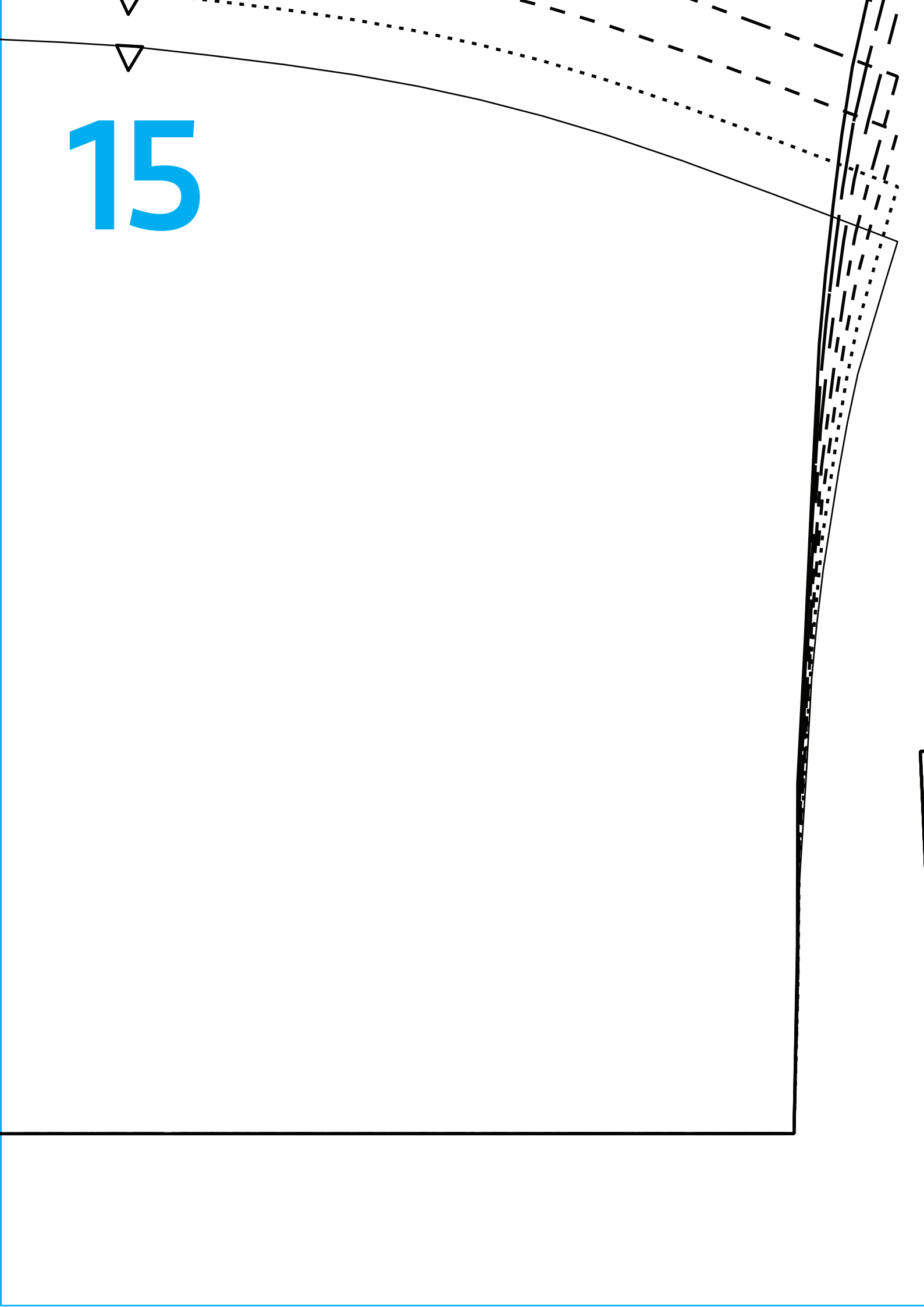


PLACE TO FOLD

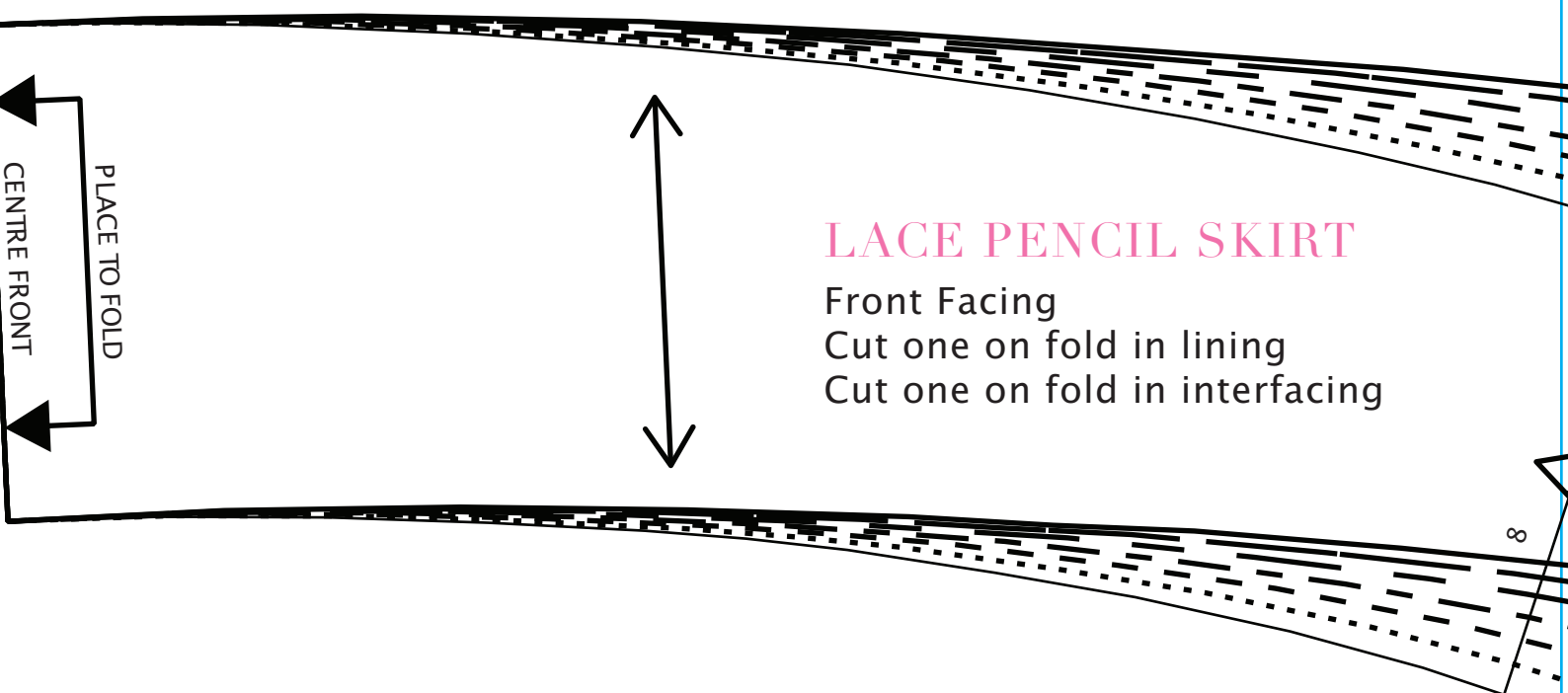
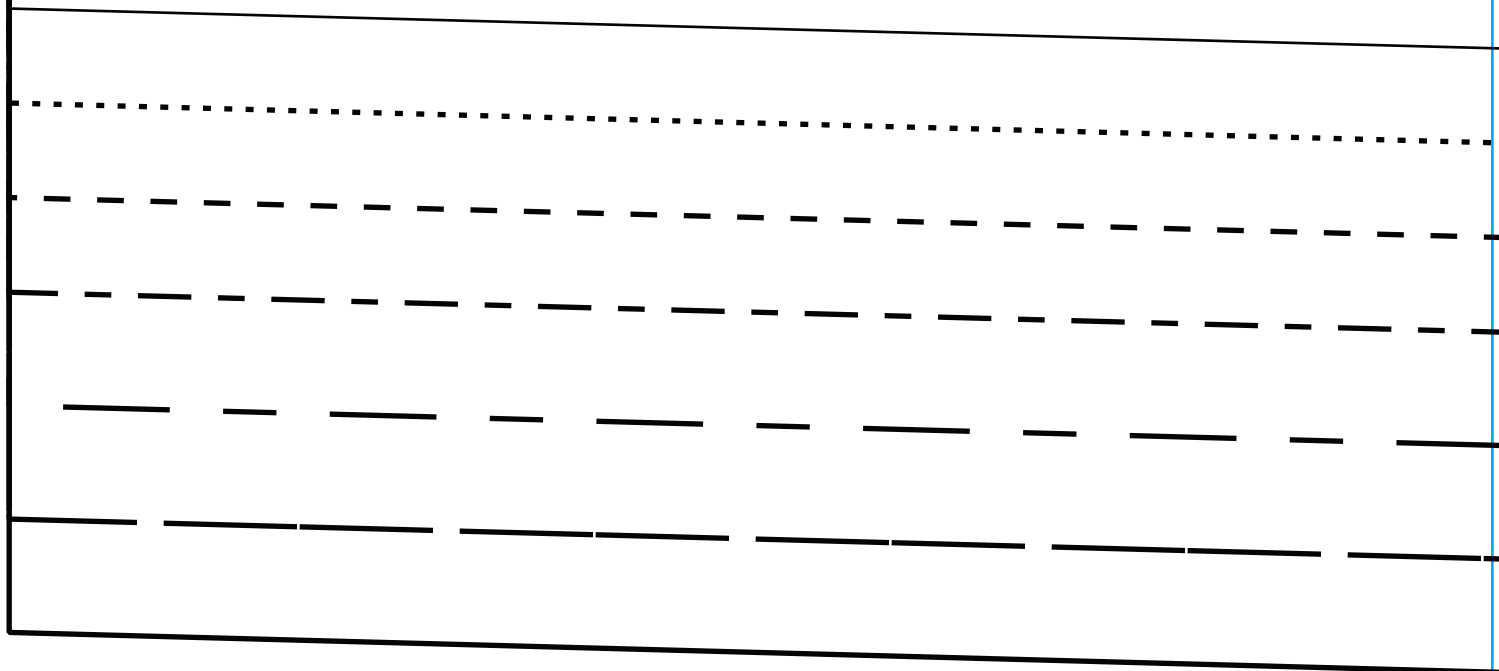


CENTRE FRONT

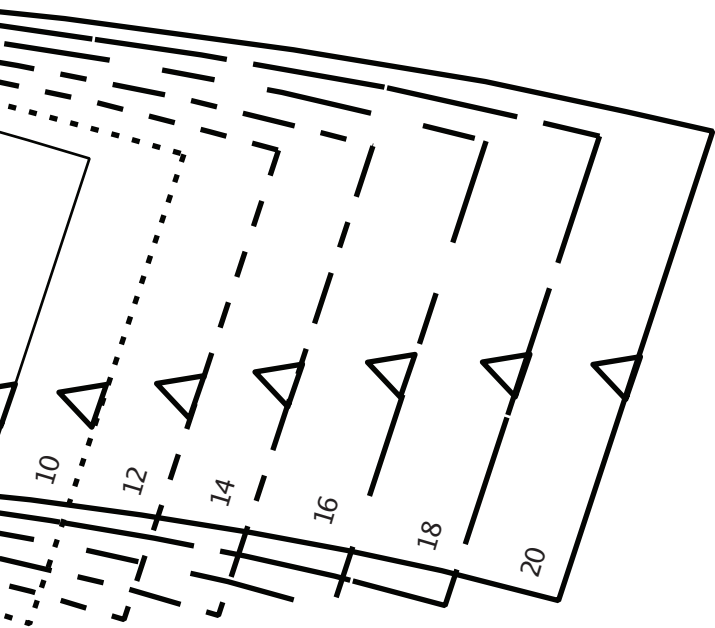
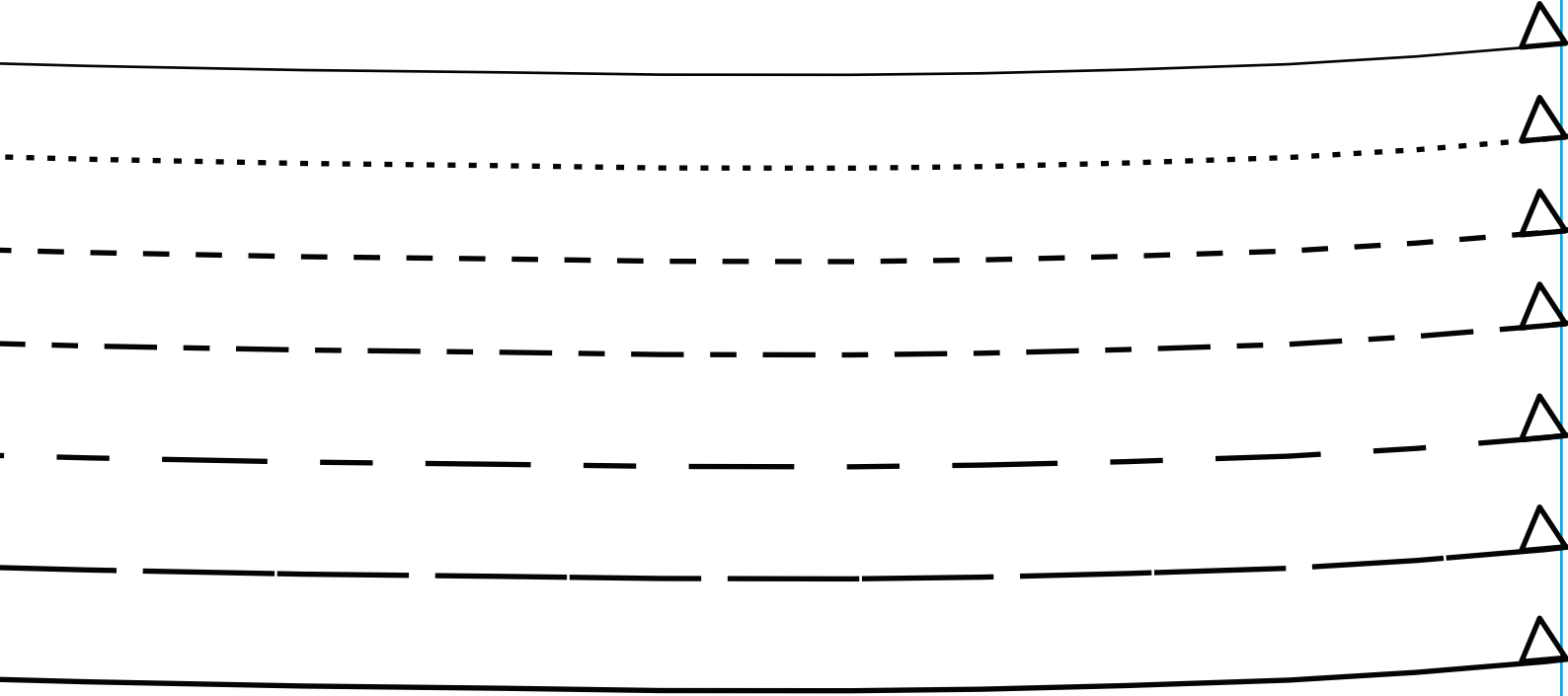
15



16



17



18

