

Issue 71 May 2015

# MOTIFS & TEMPLATES



Use these guides to get started today

---

FIND THE TEMPLATE YOU REQUIRE ON THE CONTENTS LIST  
BELOW AND JUST PRINT OUT THE PAGE OR PAGES YOU NEED  
FROM YOUR PRINT MENU

In your print menu, under Size Options, be sure to select  
to print 'Actual Size', instead of 'Fit to Page'

---

**Page 2-26**

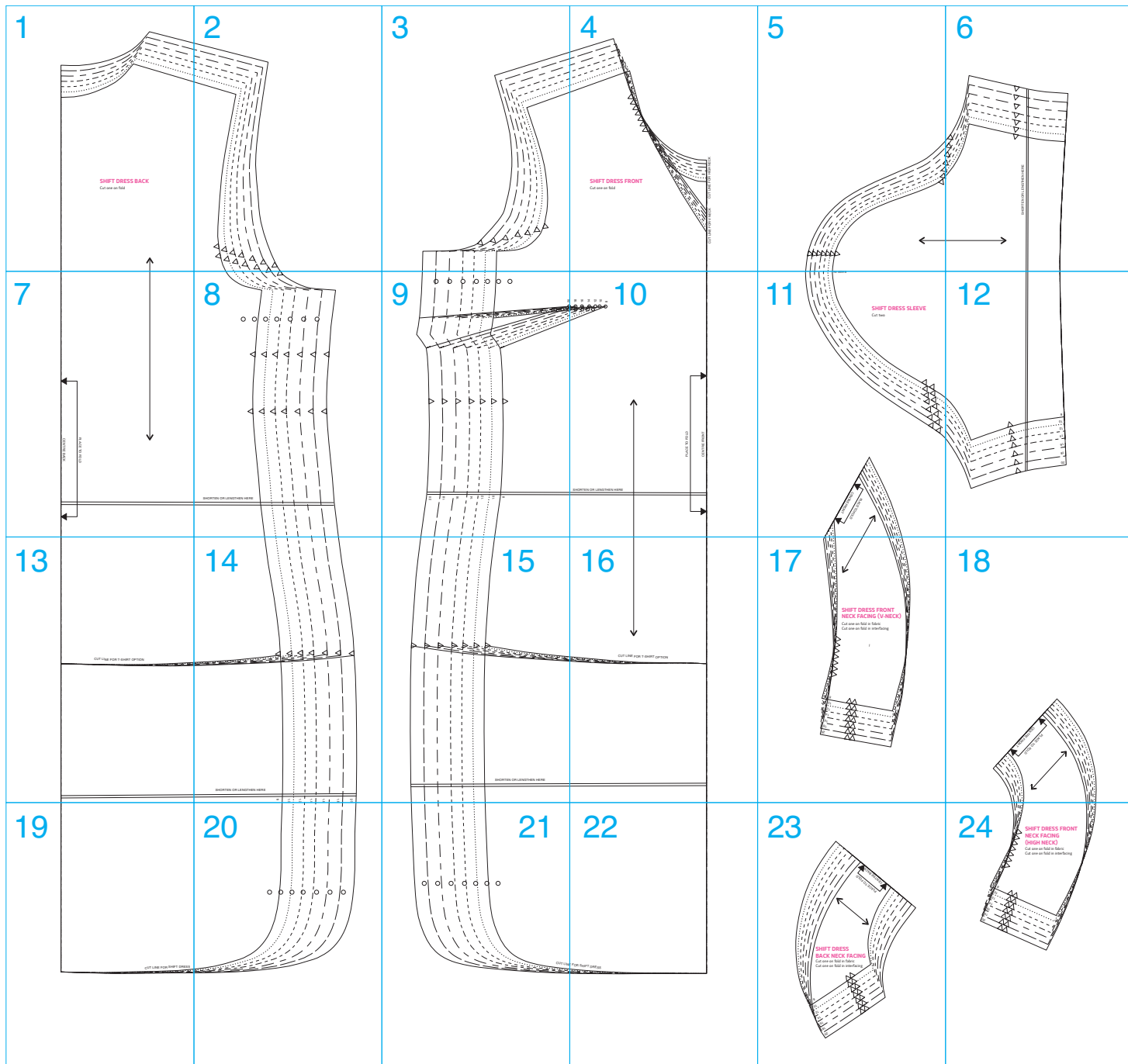
**Title:** Shift dress

**Designer:** Claire-Louise Hardie

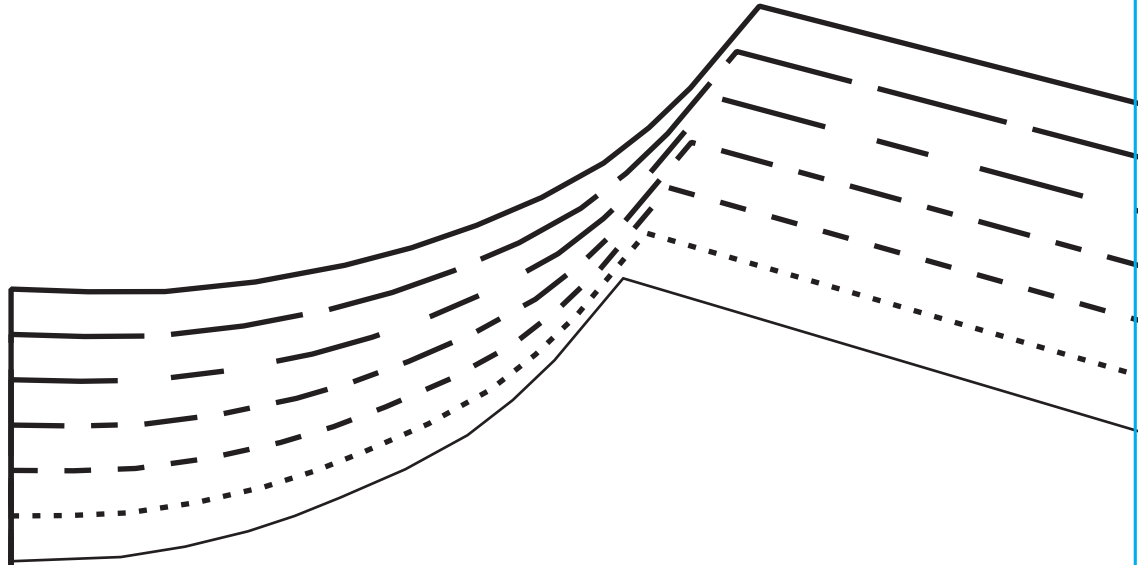
**Magazine page:** 18

© Aceville Publications Ltd.

All projects, templates and patterns are for personal home use only and cannot be sold or  
used for commercial purposes.



1

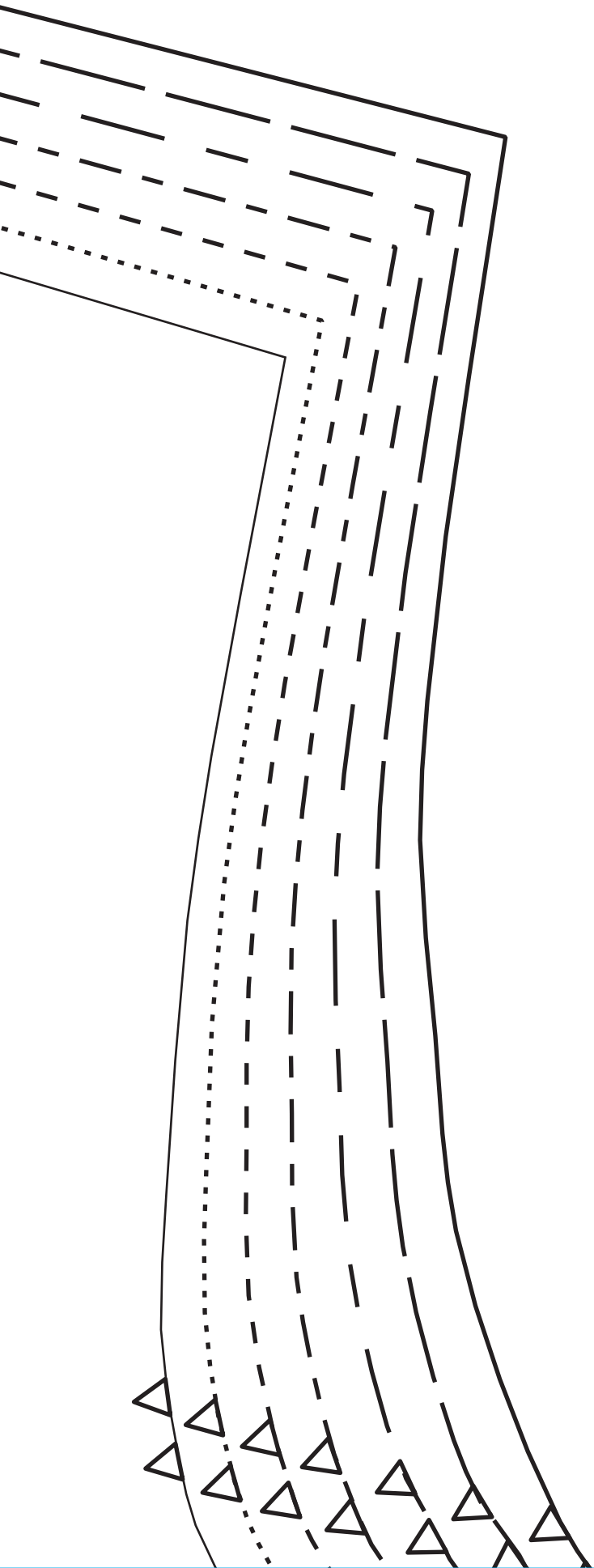


## SHIFT DRESS BACK

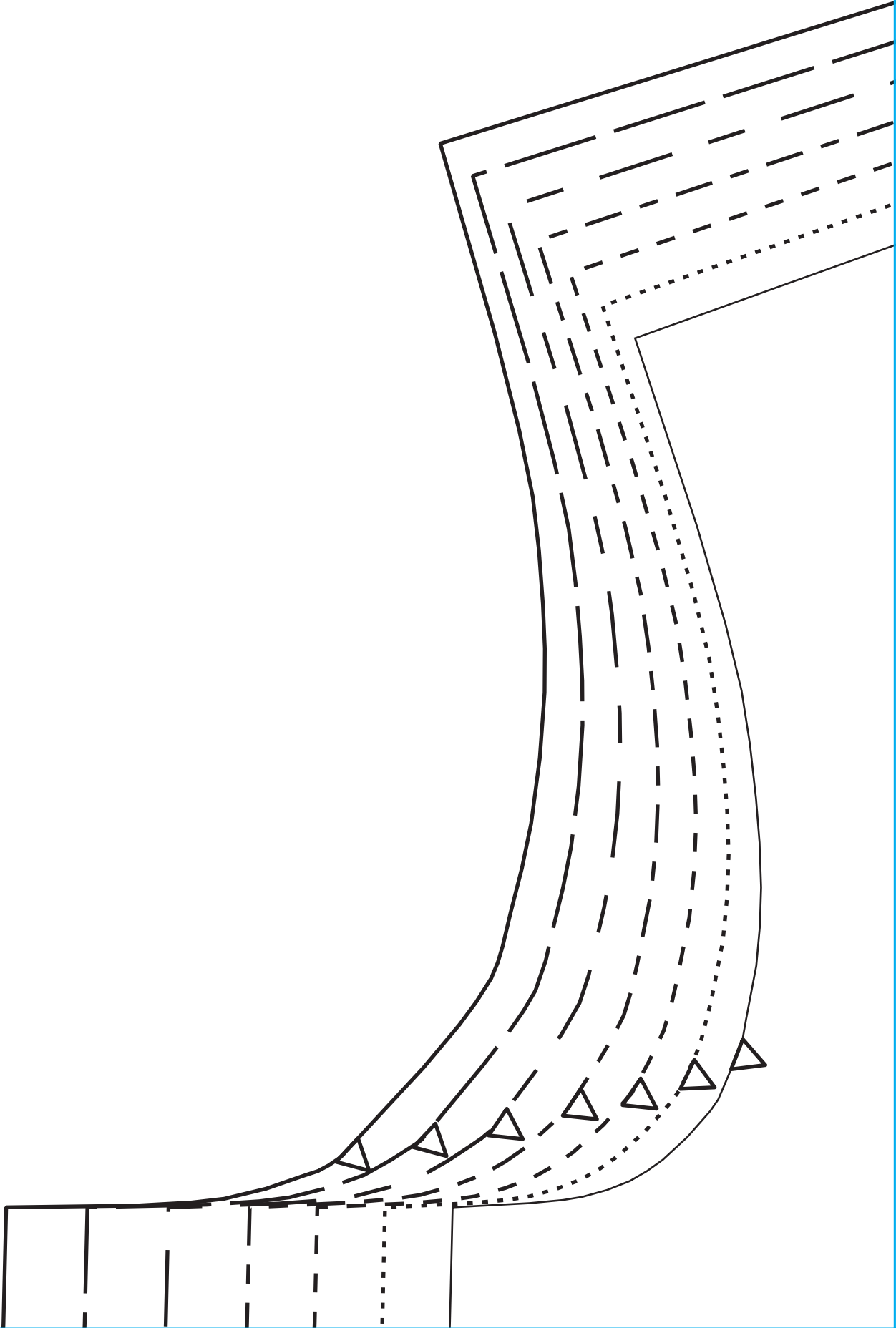
Cut one on fold



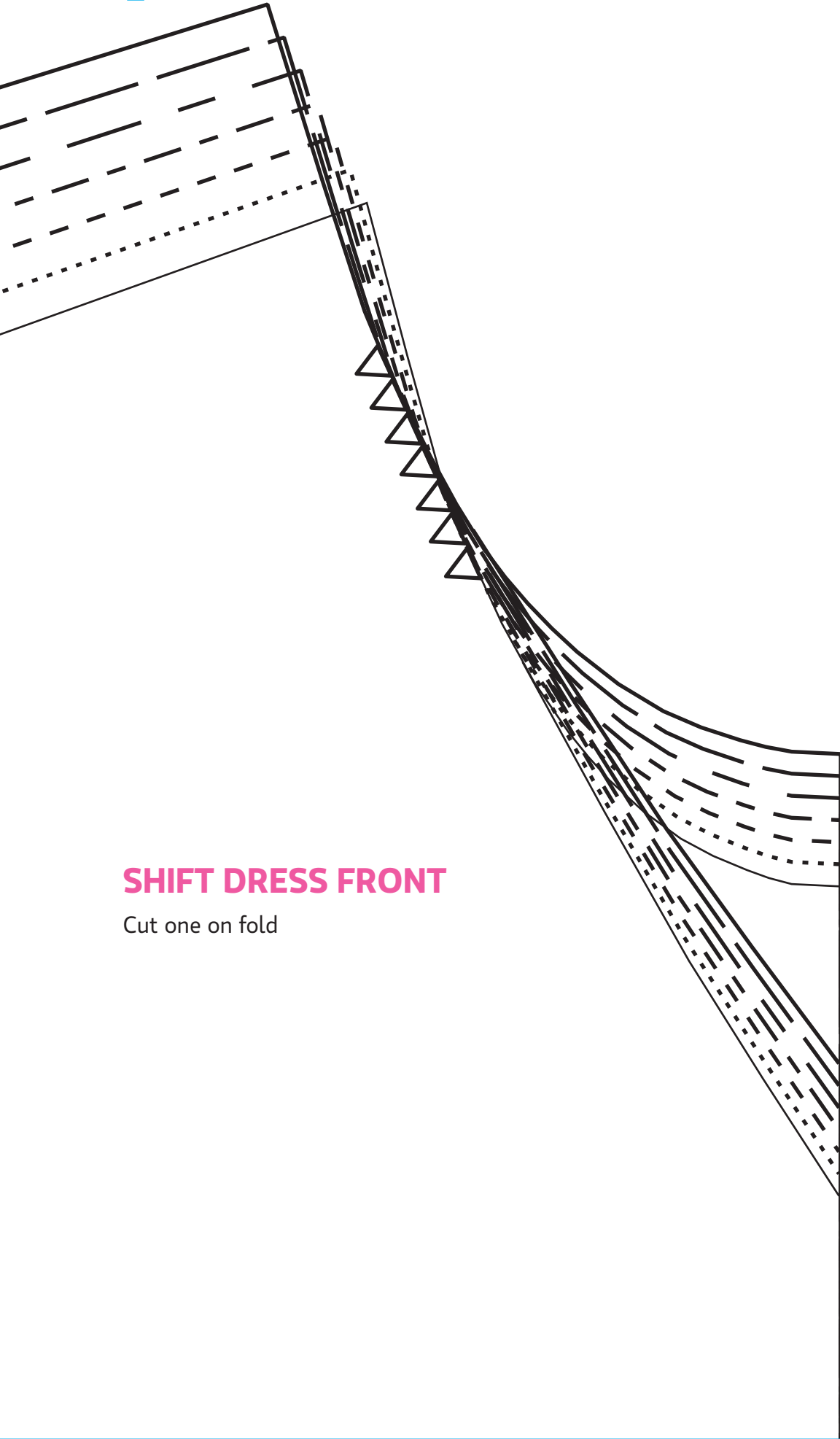
2



3



4



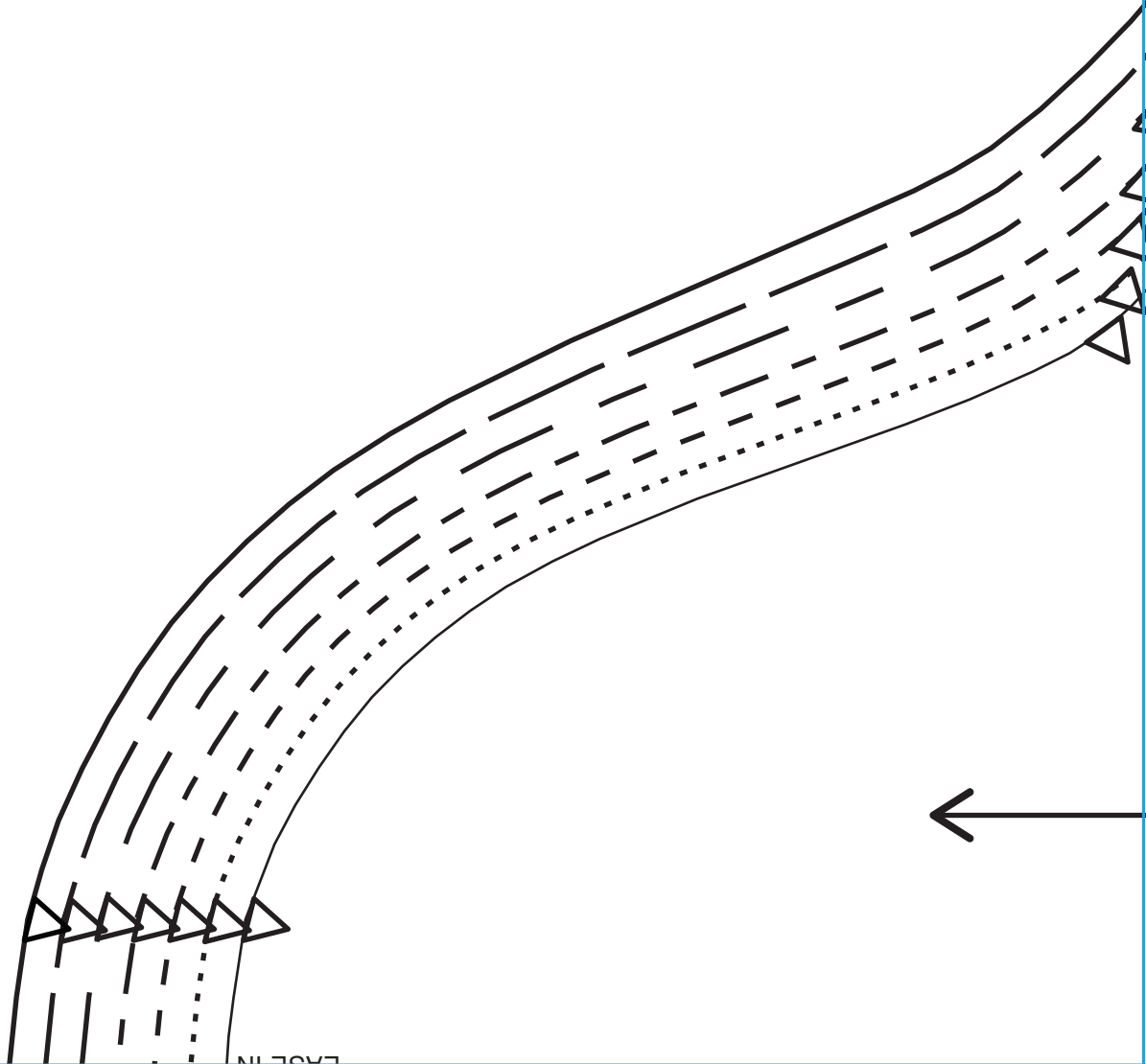
**SHIFT DRESS FRONT**

Cut one on fold

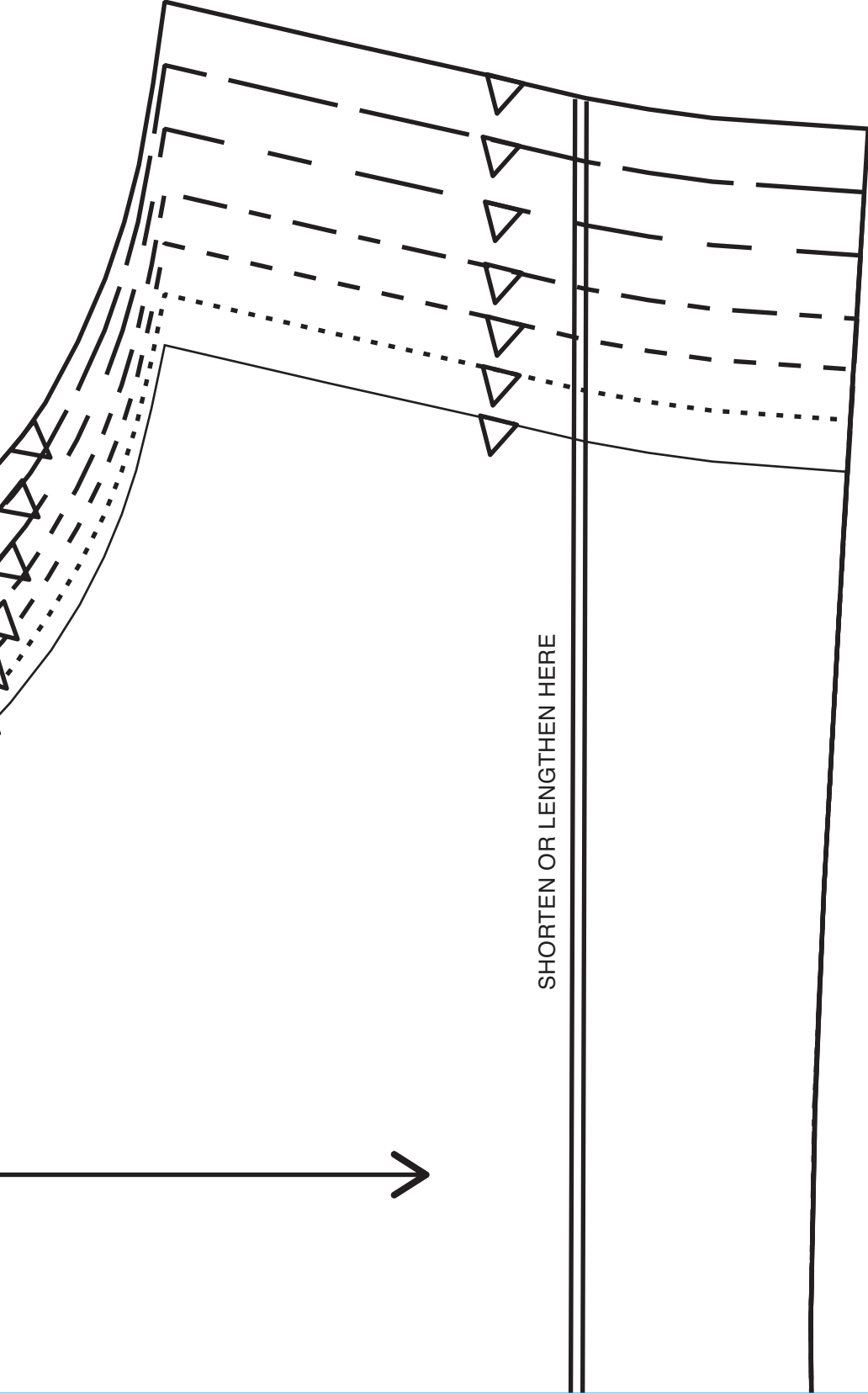
CUT LINE FOR HIGH NECK

CUT LINE FOR V NECK

5

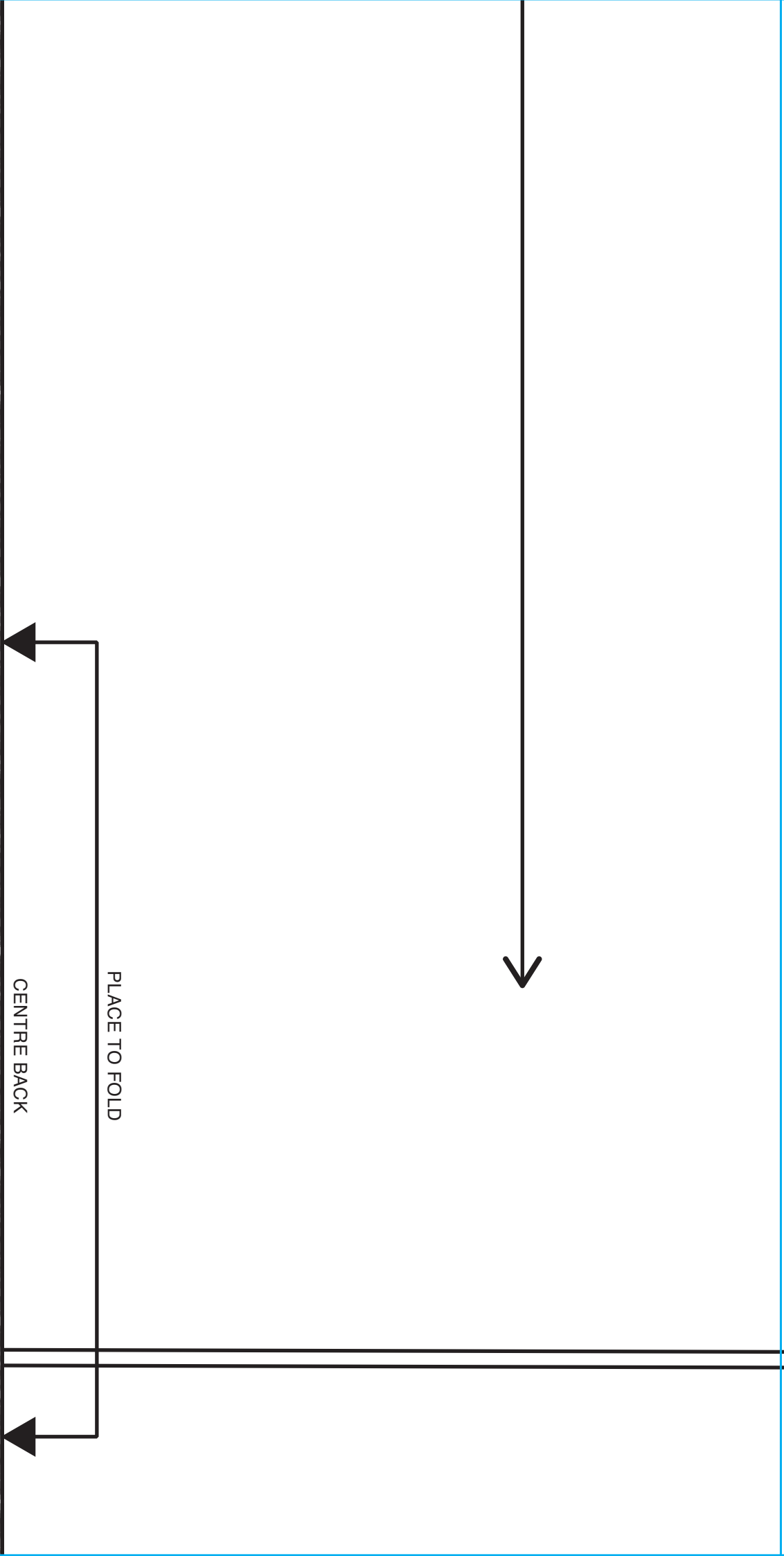


6

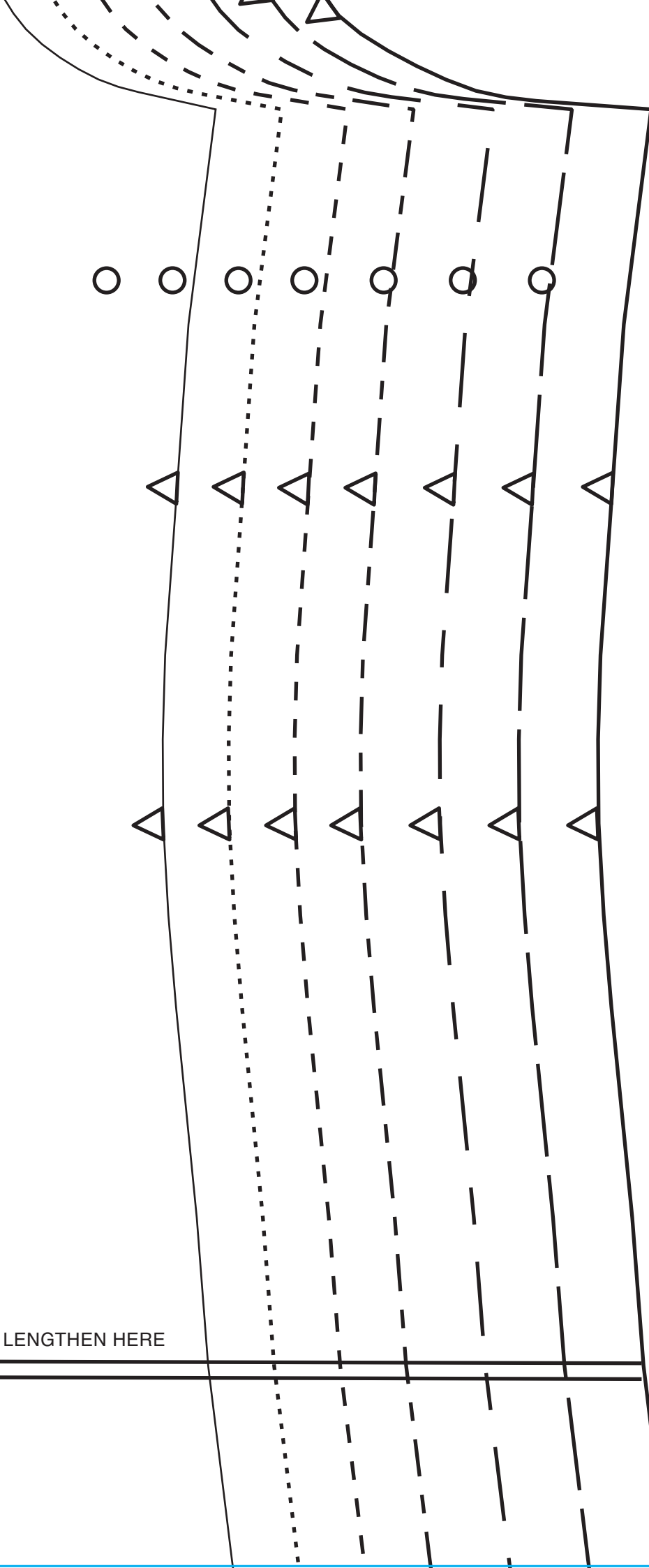




7

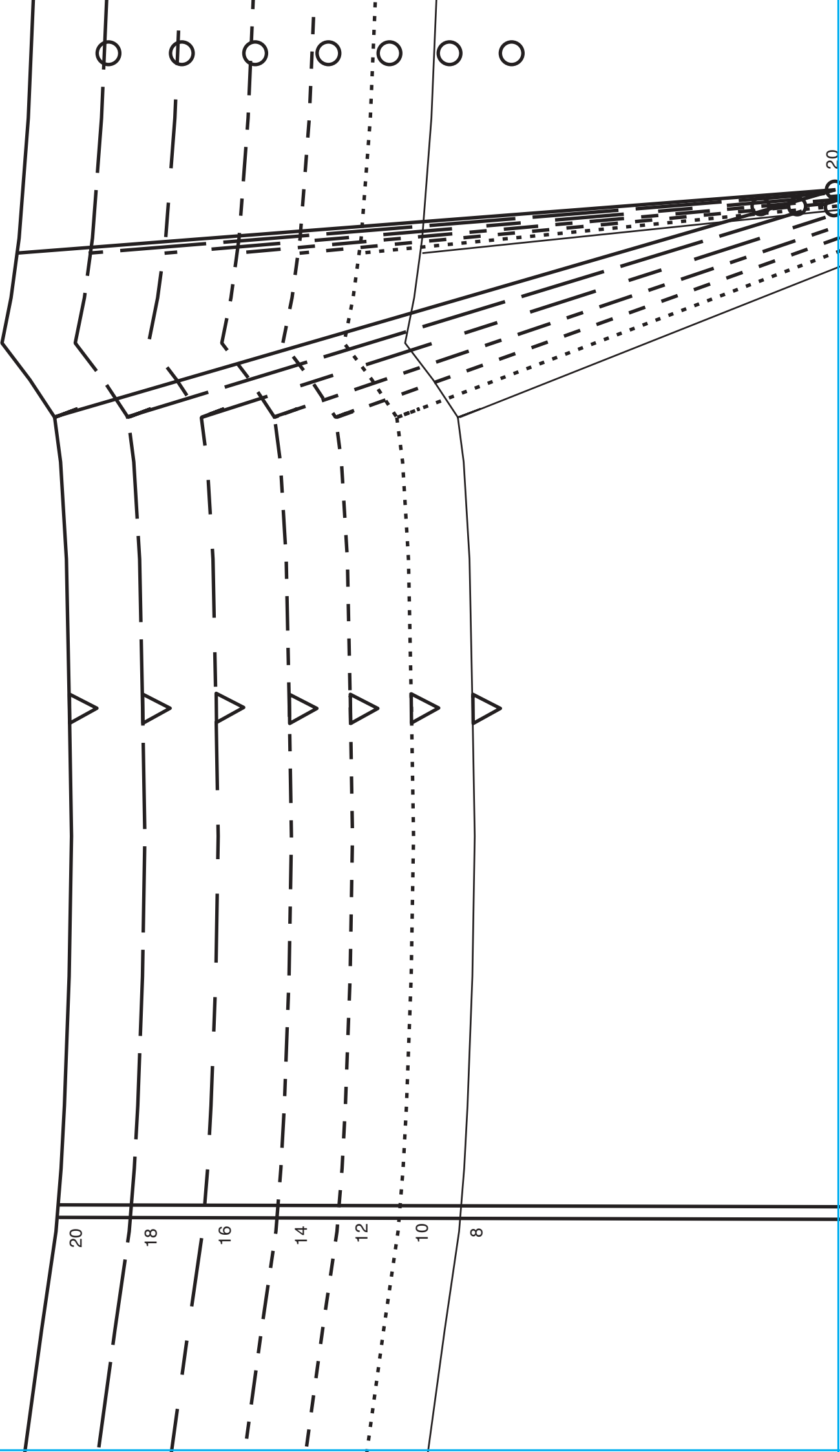


8

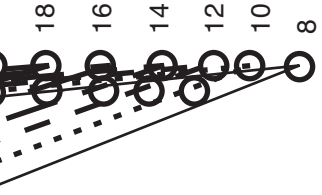


SHORTEN OR LENGTHEN HERE

# 9



# 10



SHORTEN OR LENGTHEN HERE



PLACE TO FOLD

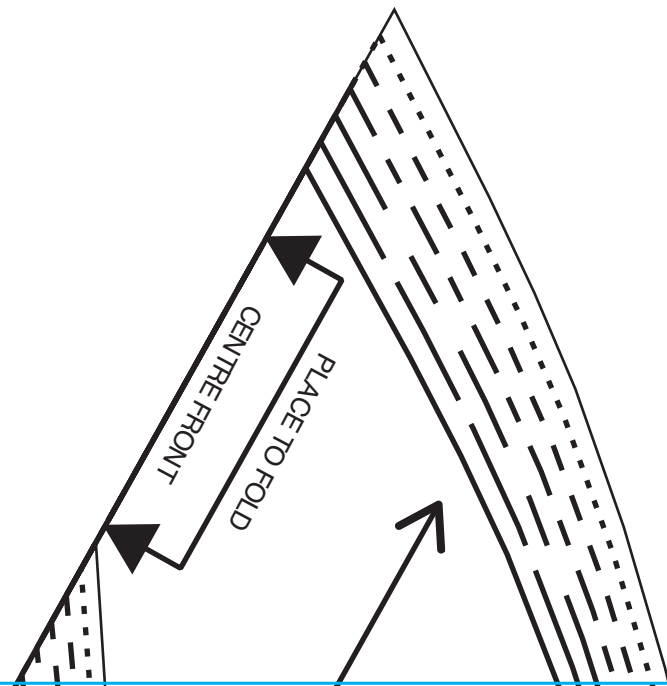
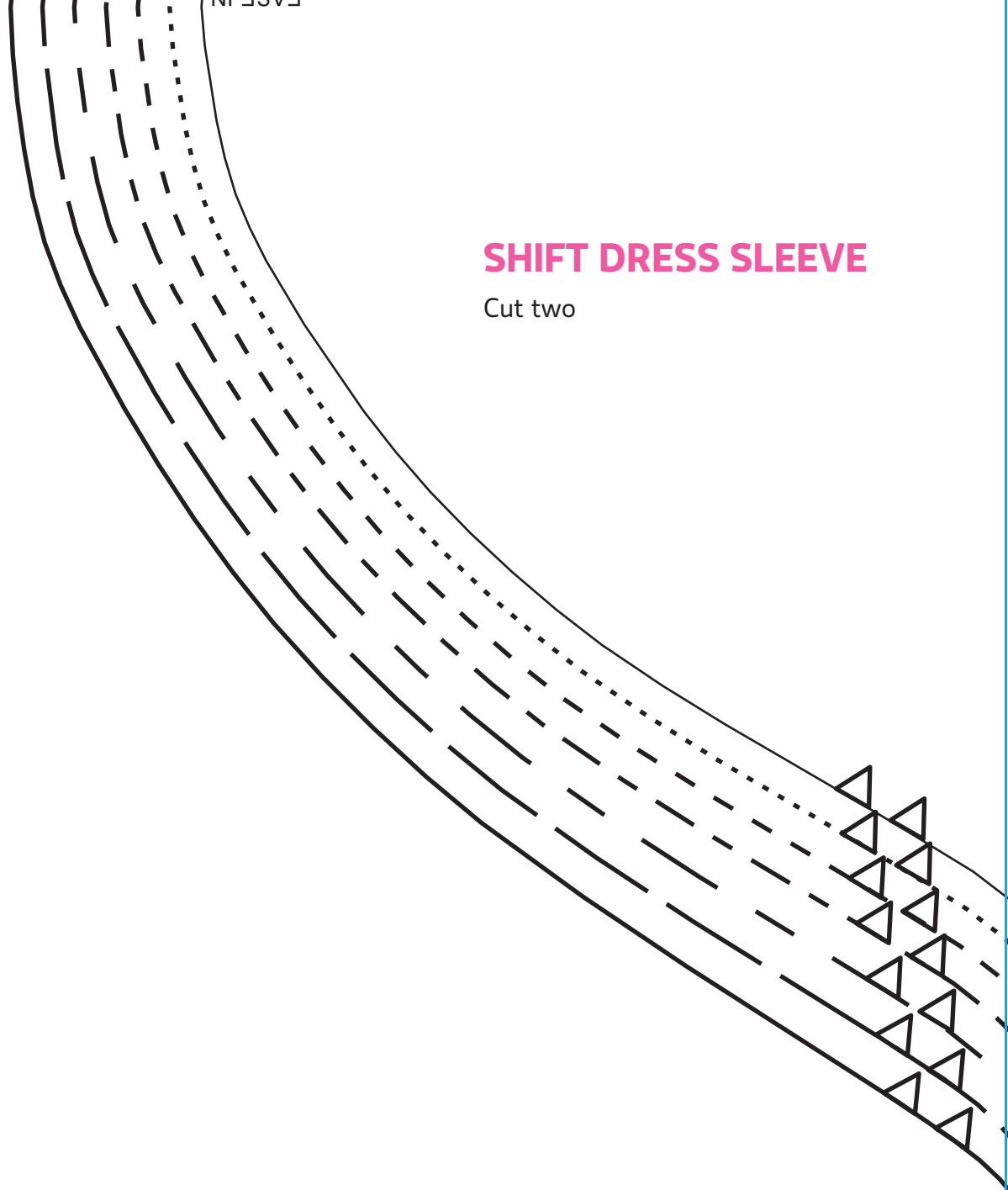
CENTRE FRONT



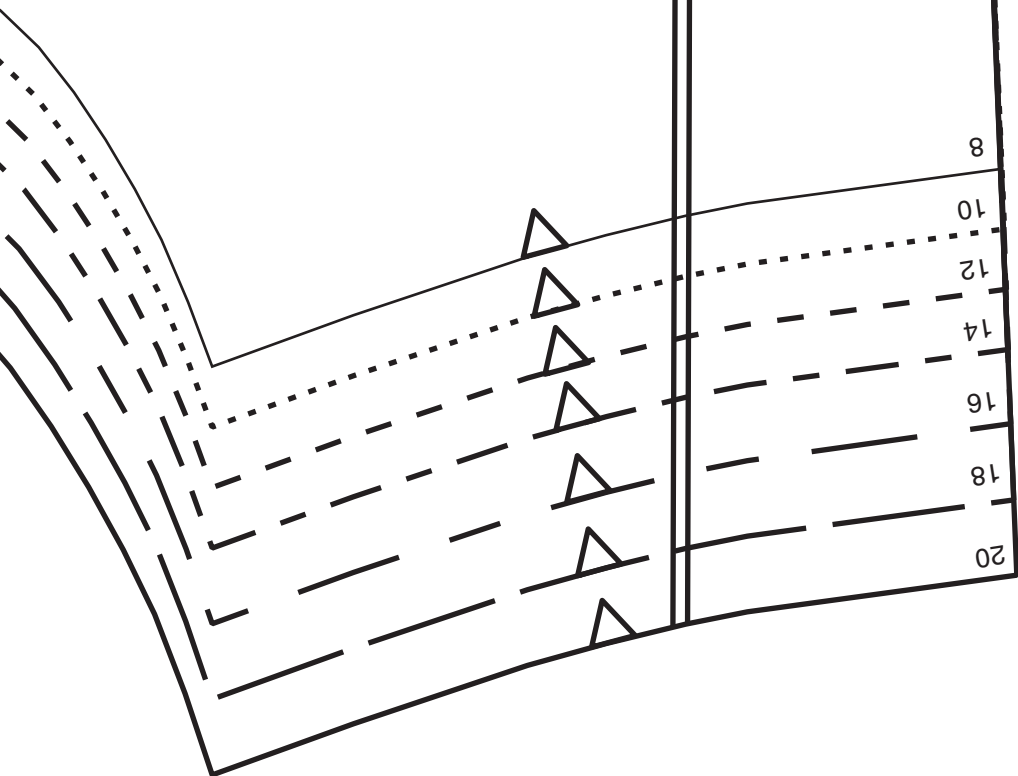
11

# SHIFT DRESS SLEEVE

Cut two



# 12

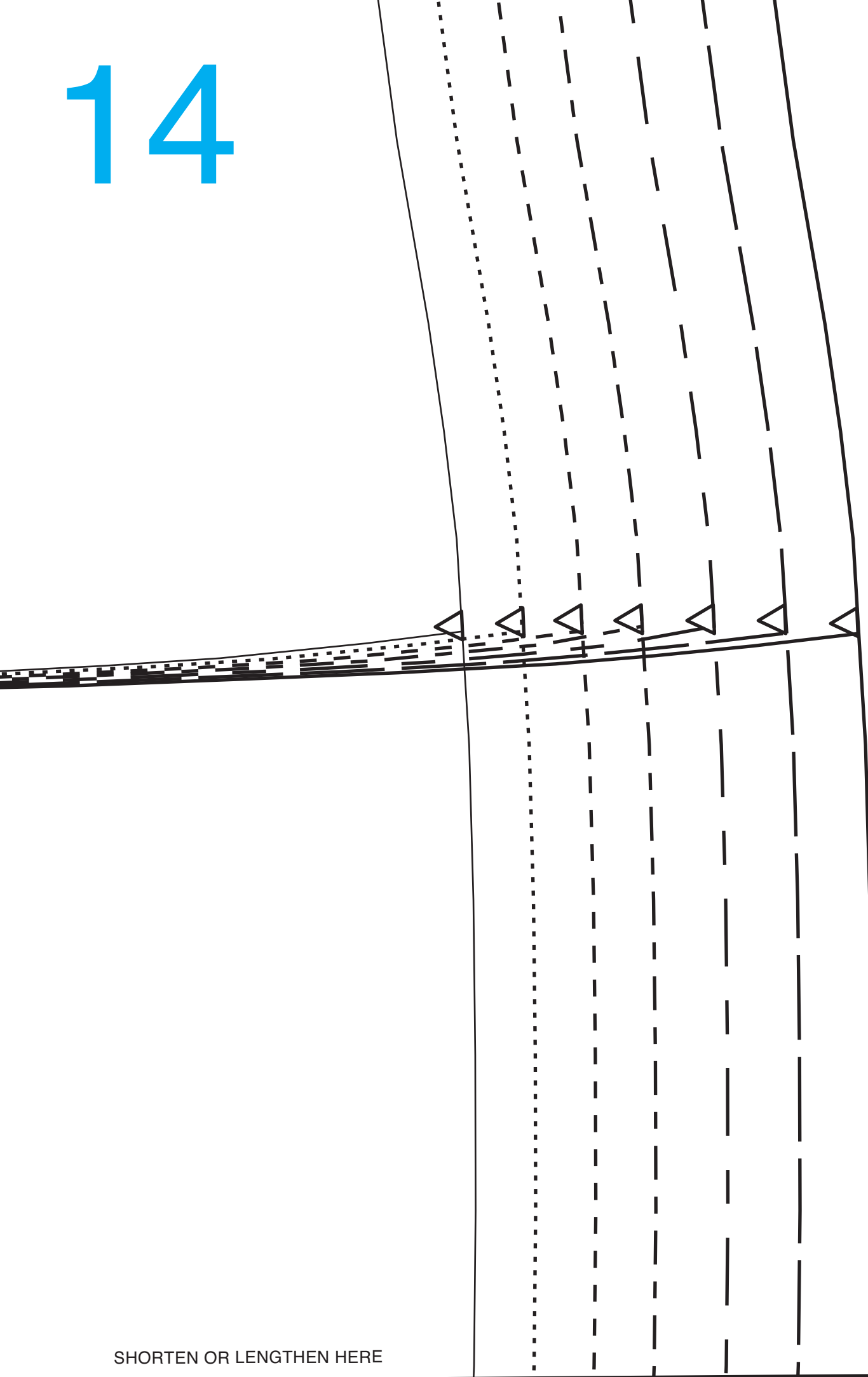


# 13

CUT LINE FOR T-SHIRT OPTION



# 14



SHORTEN OR LENGTHEN HERE

8

10

12

14

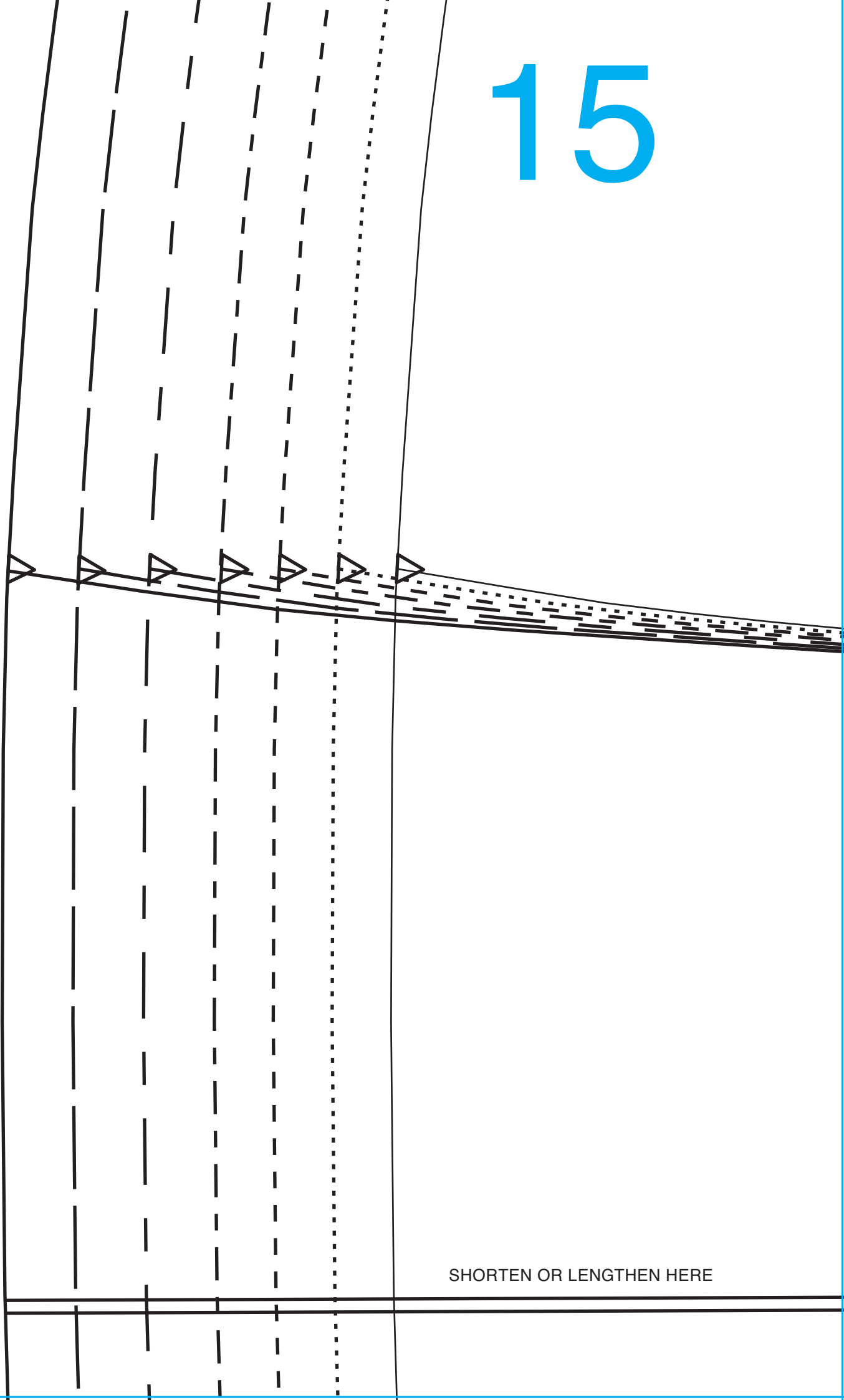
16

18

20



# 15



SHORTEN OR LENGTHEN HERE

# 16



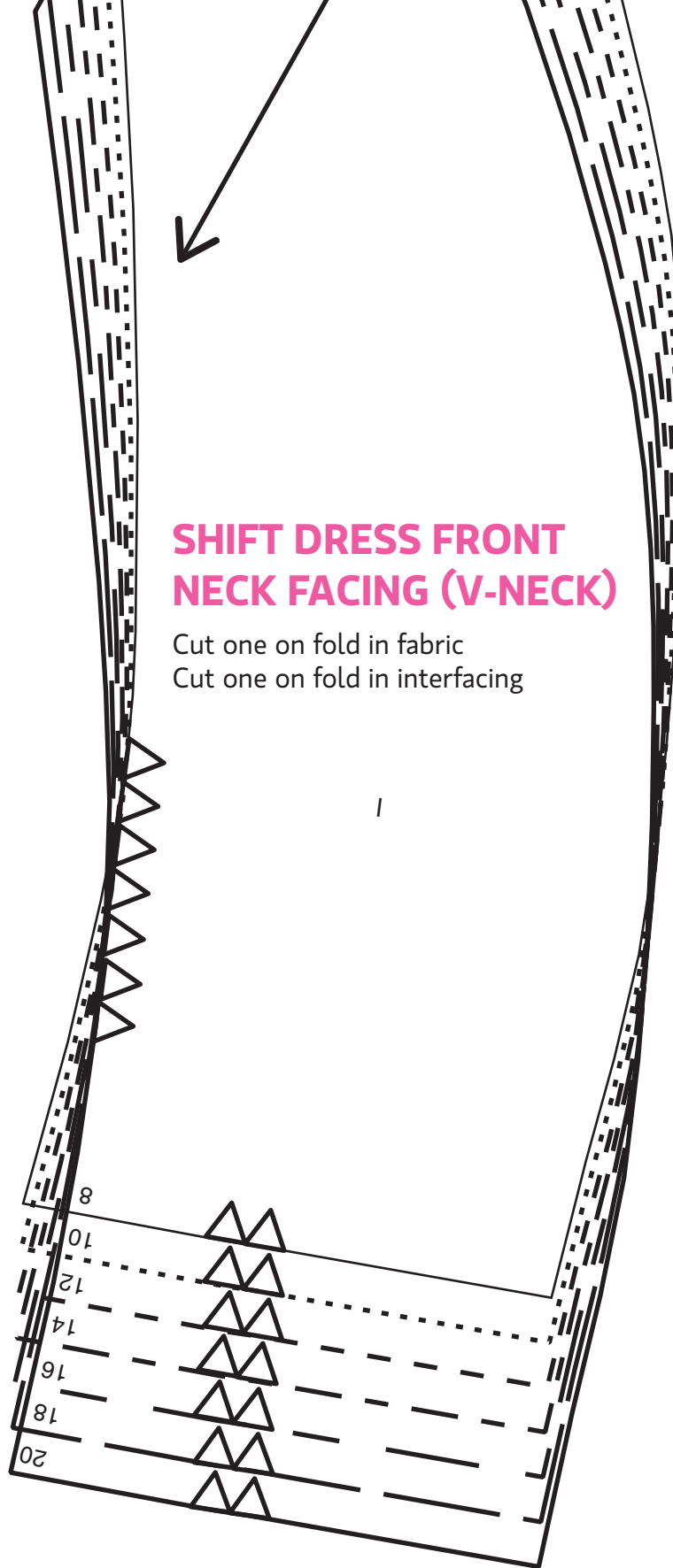
CUT LINE FOR T-SHIRT OPTION



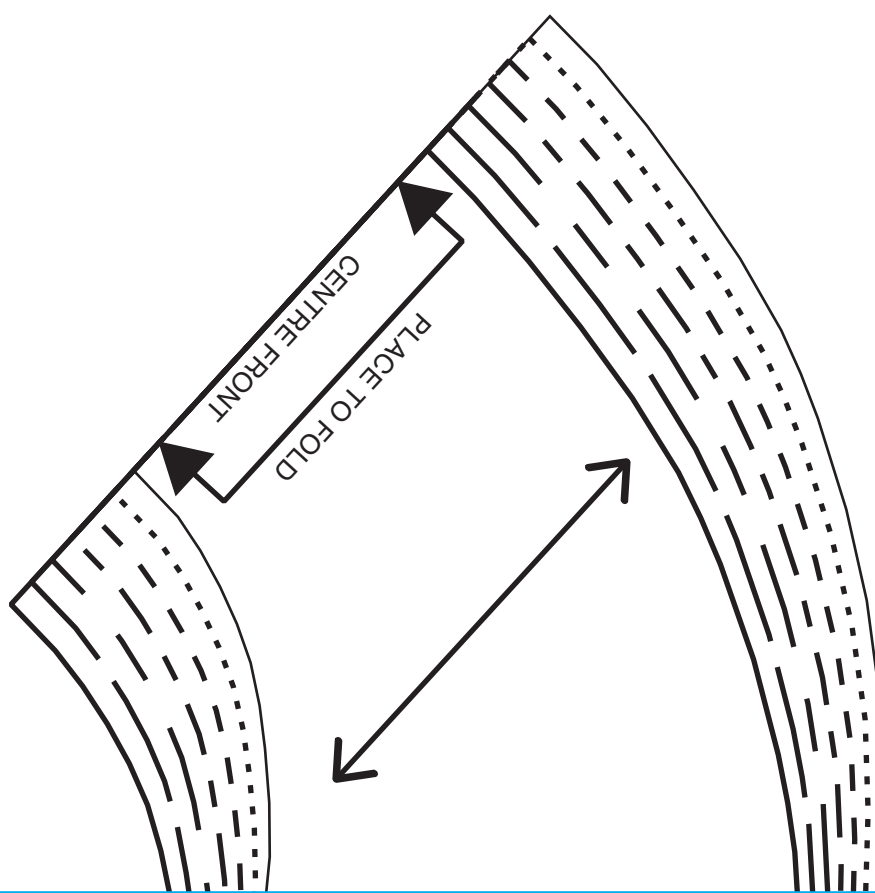
# 17

## SHIFT DRESS FRONT NECK FACING (V-NECK)

Cut one on fold in fabric  
Cut one on fold in interfacing



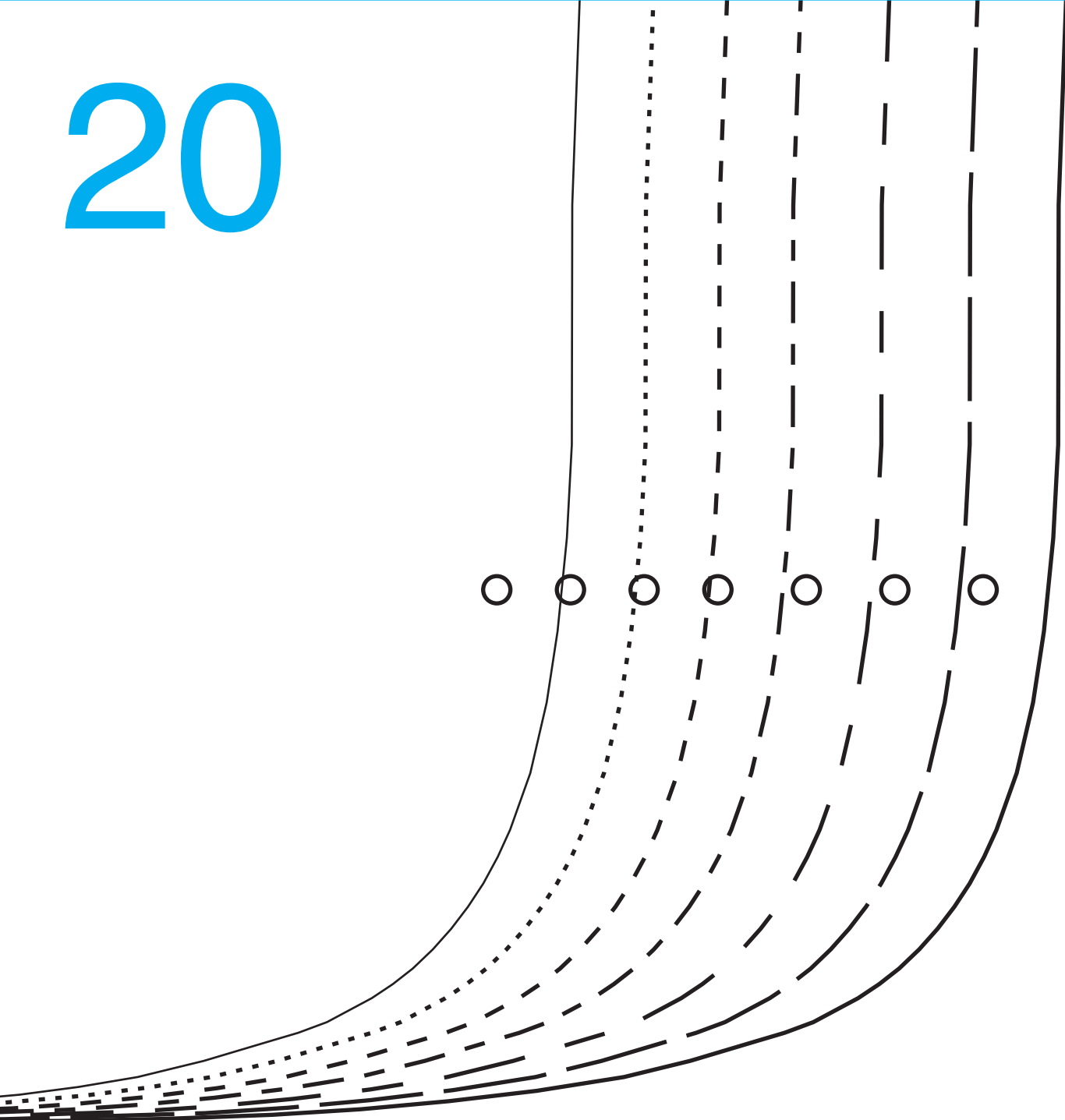
# 18



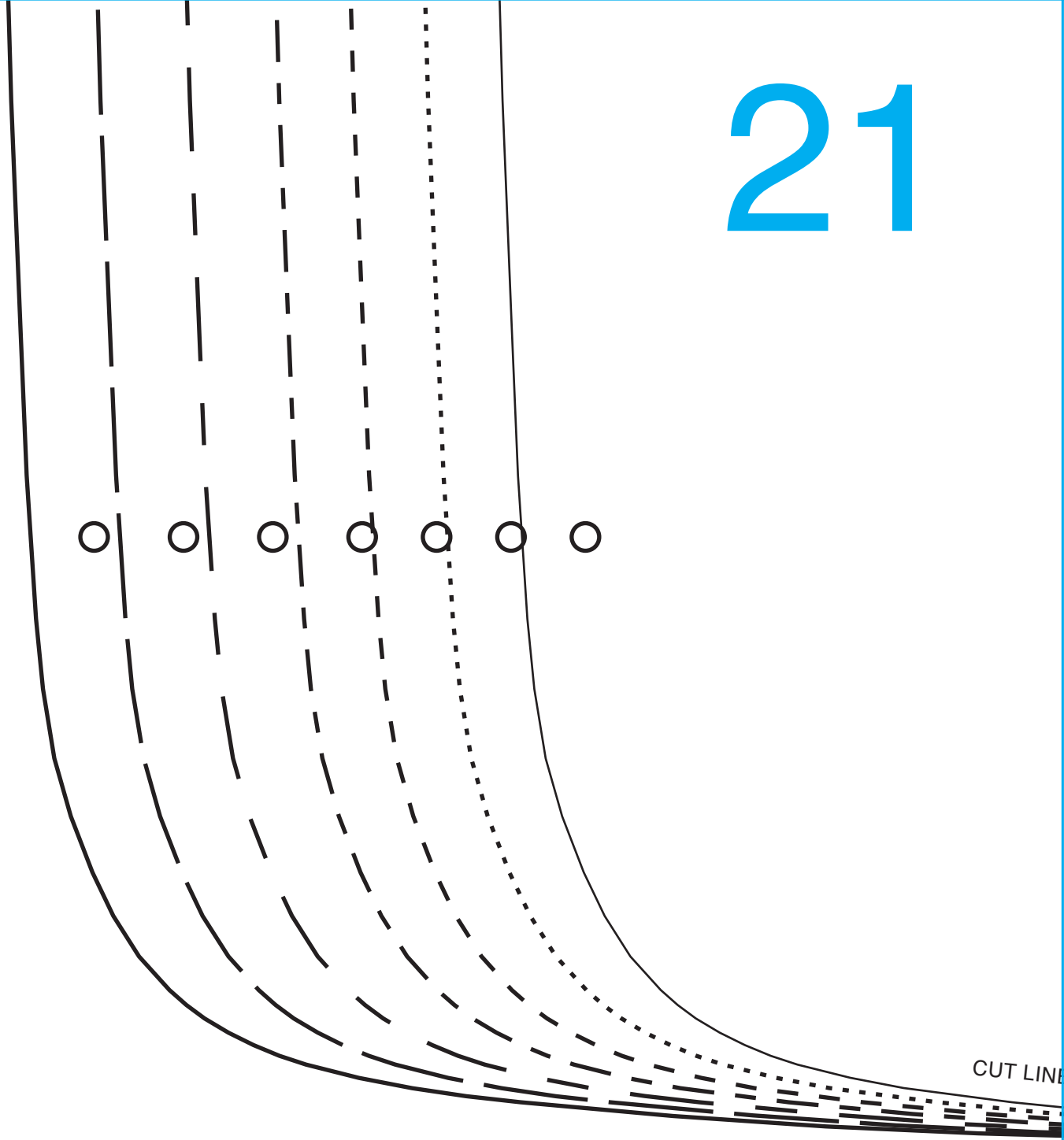
# 19

CUT LINE FOR SHIFT DRESS

20



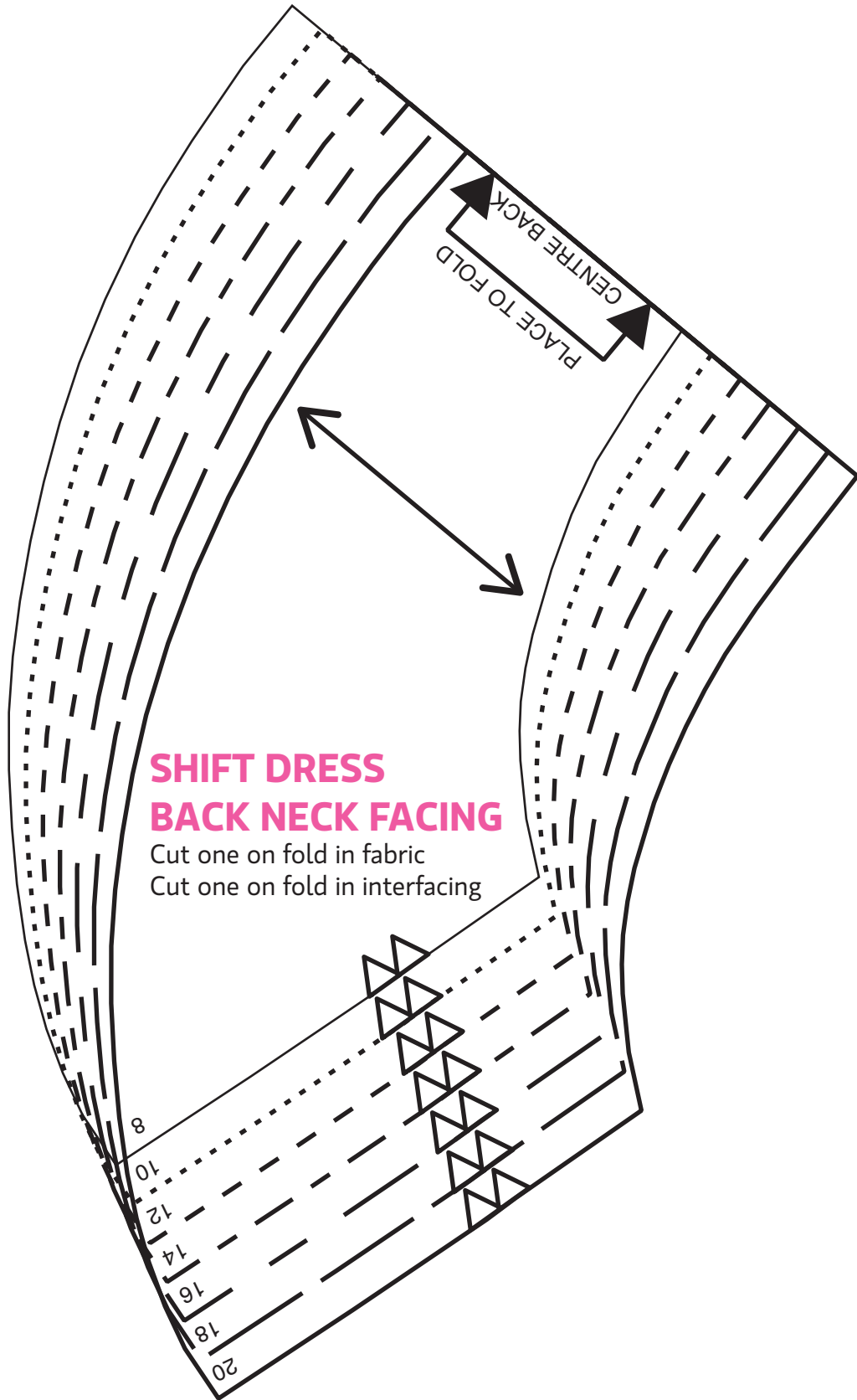
21



22

E FOR SHIFT DRESS





# 24

## SHIFT DRESS FRONT NECK FACING (HIGH NECK)

Cut one on fold in fabric  
Cut one on fold in interfacing

