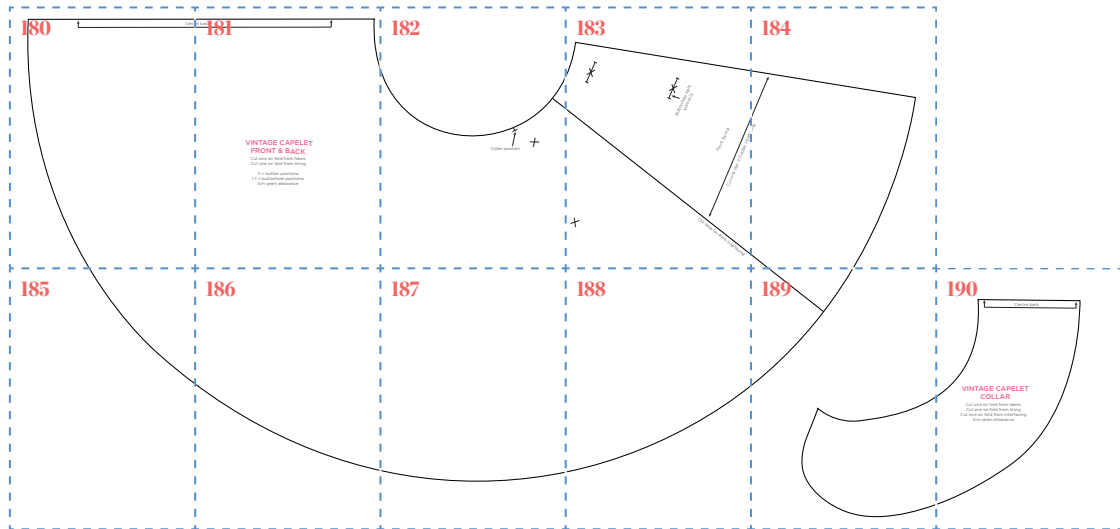
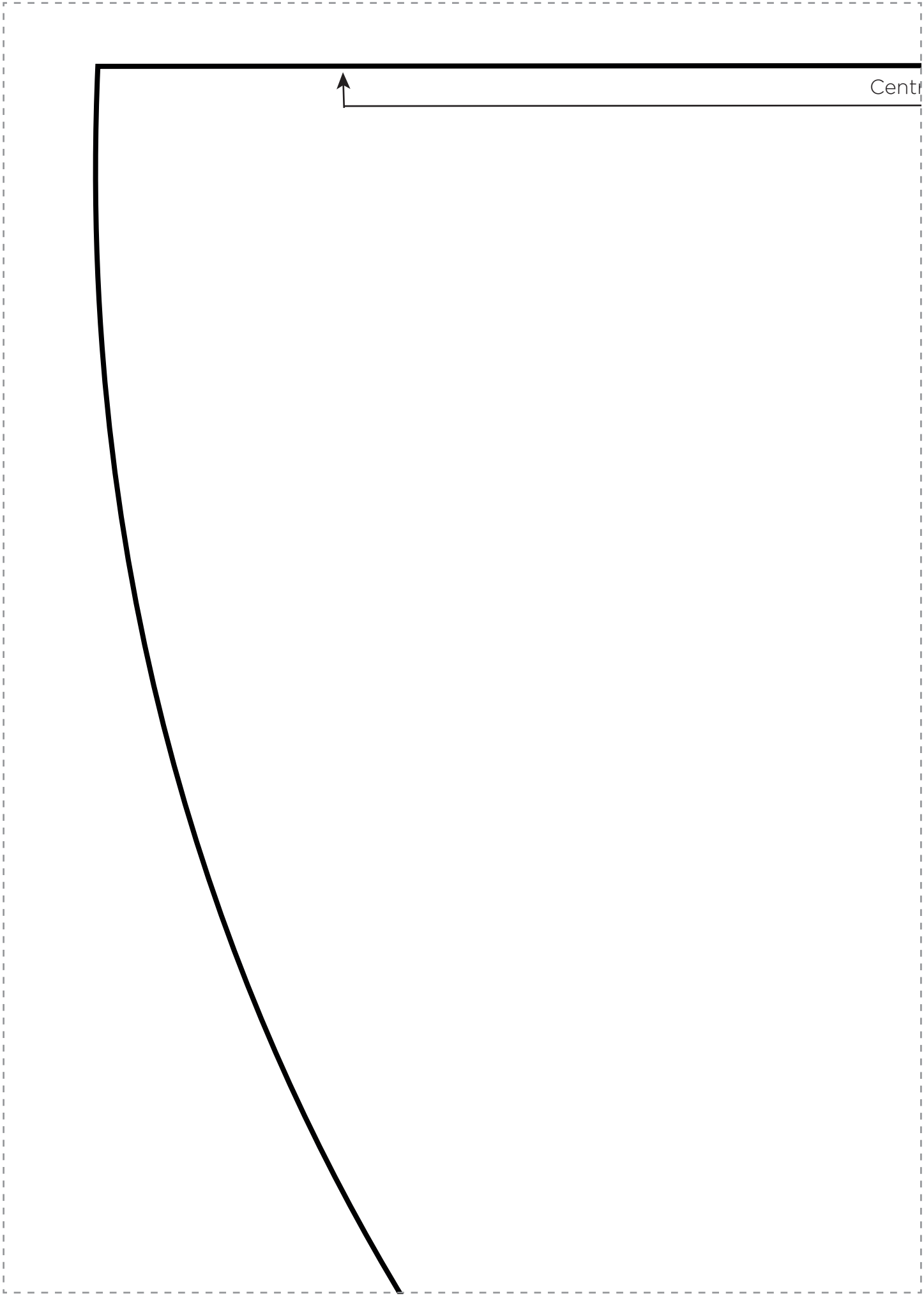


# Vintage capelet

Sew Style Vintage 86 • Templates 179-190





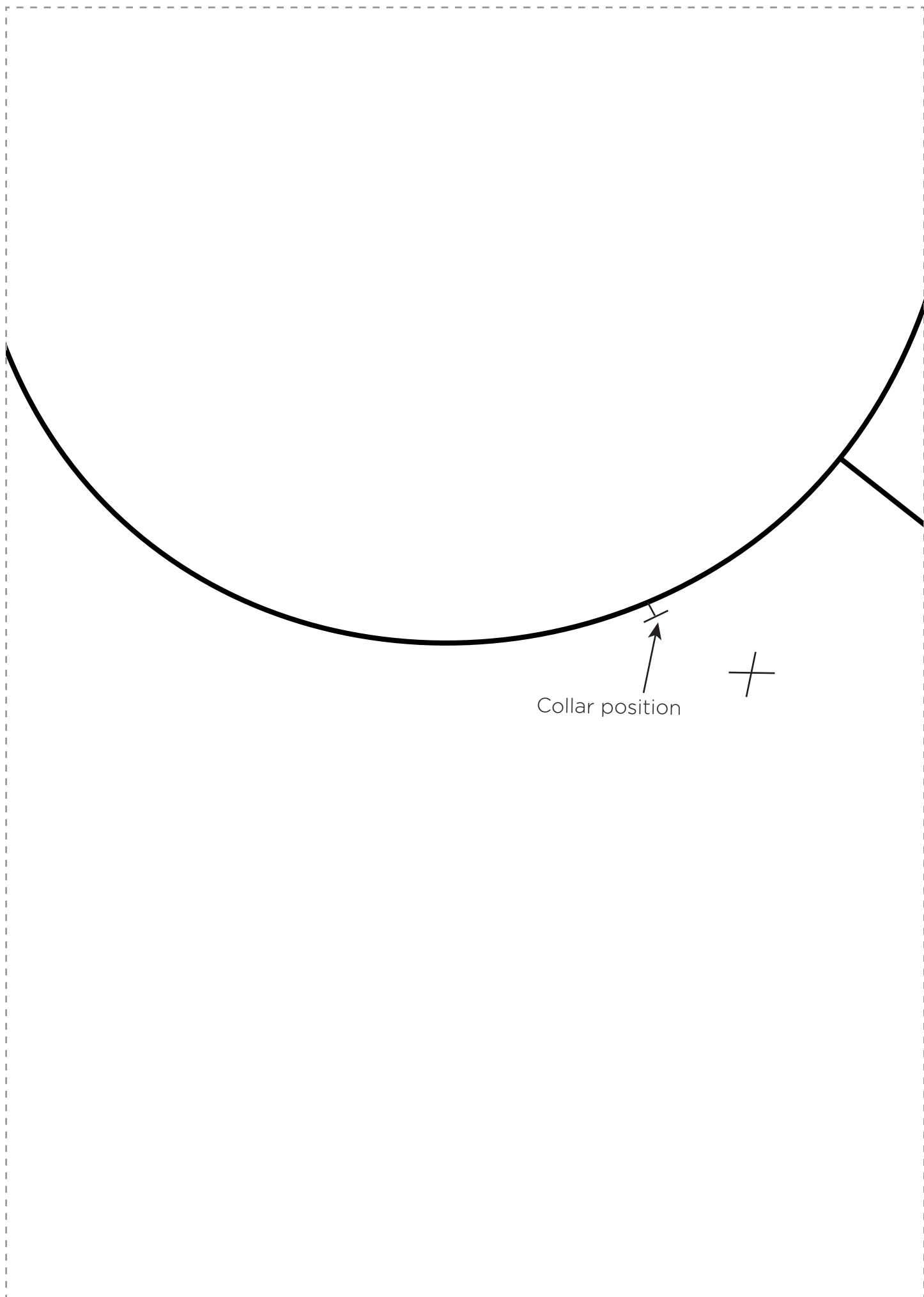


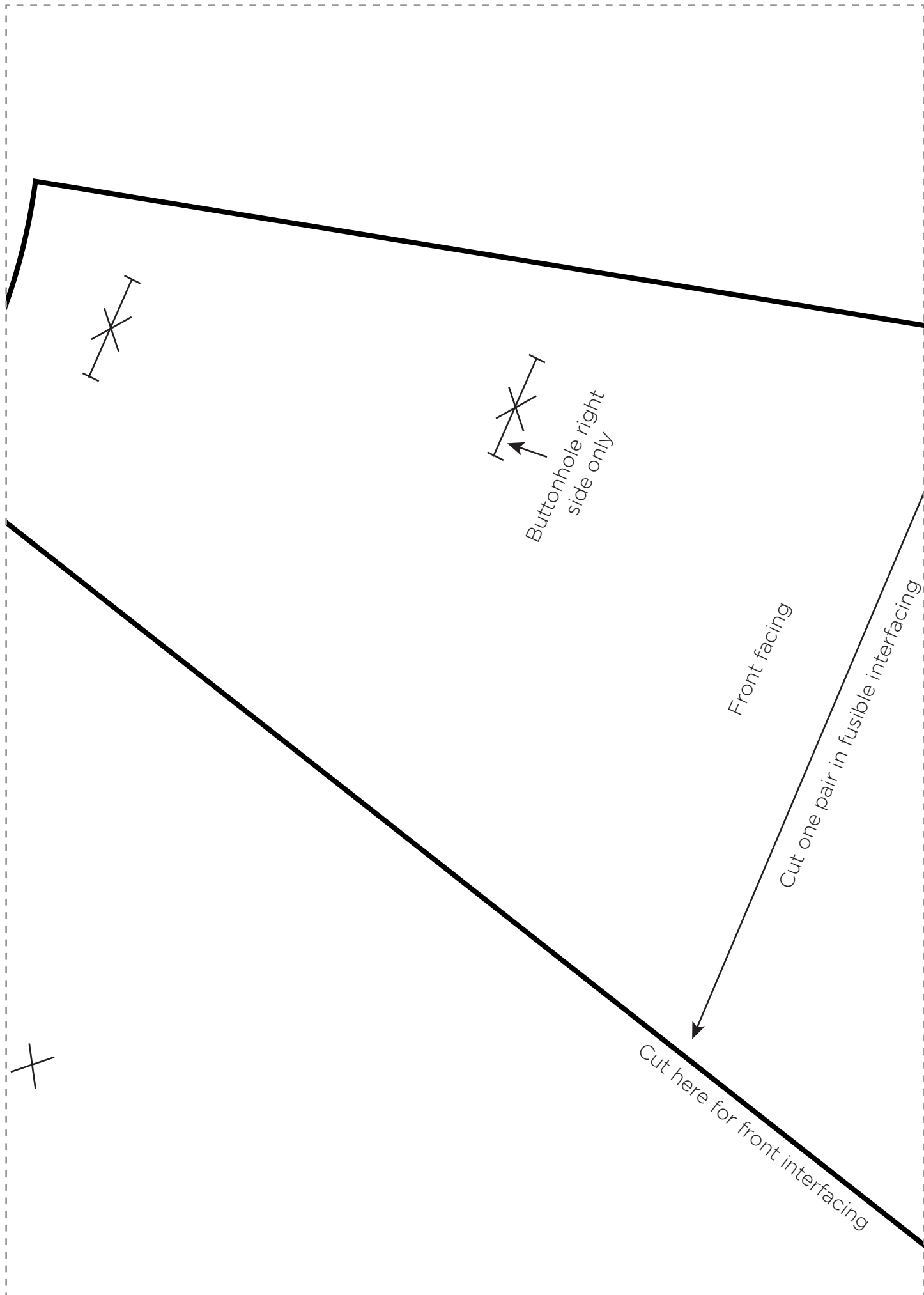
to back

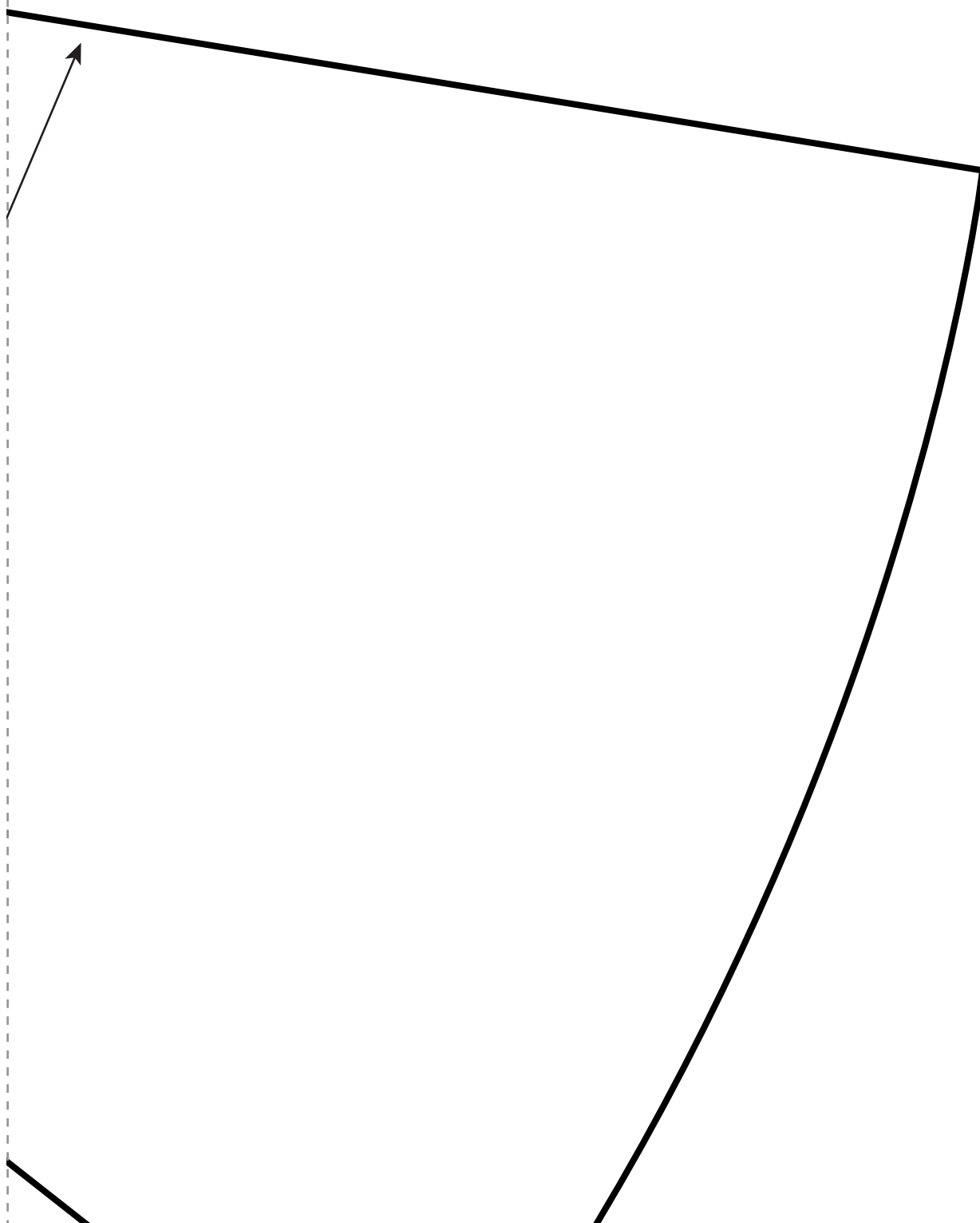
## VINTAGE CAPELET FRONT & BACK

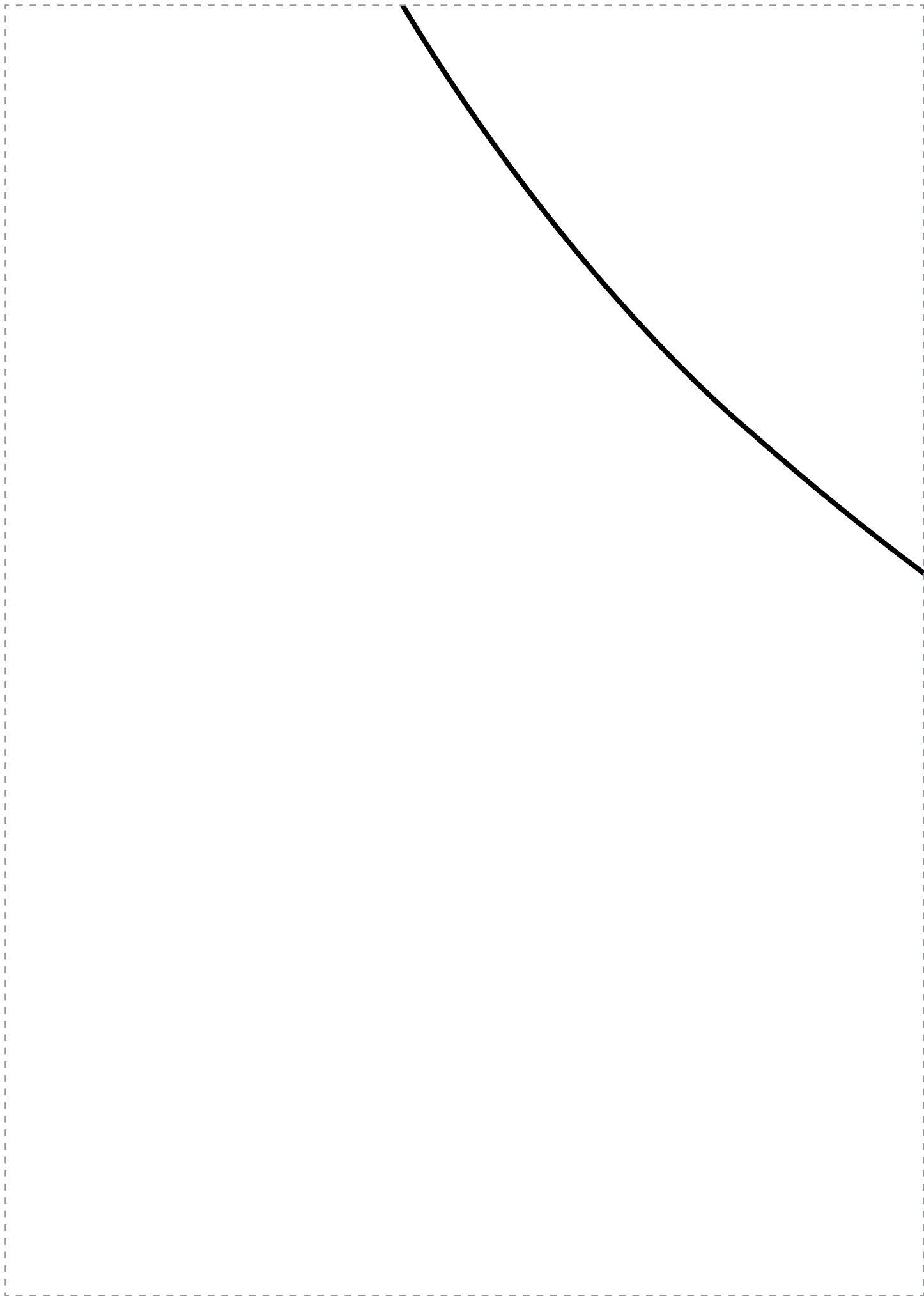
Cut one on fold from fabric  
Cut one on fold from lining

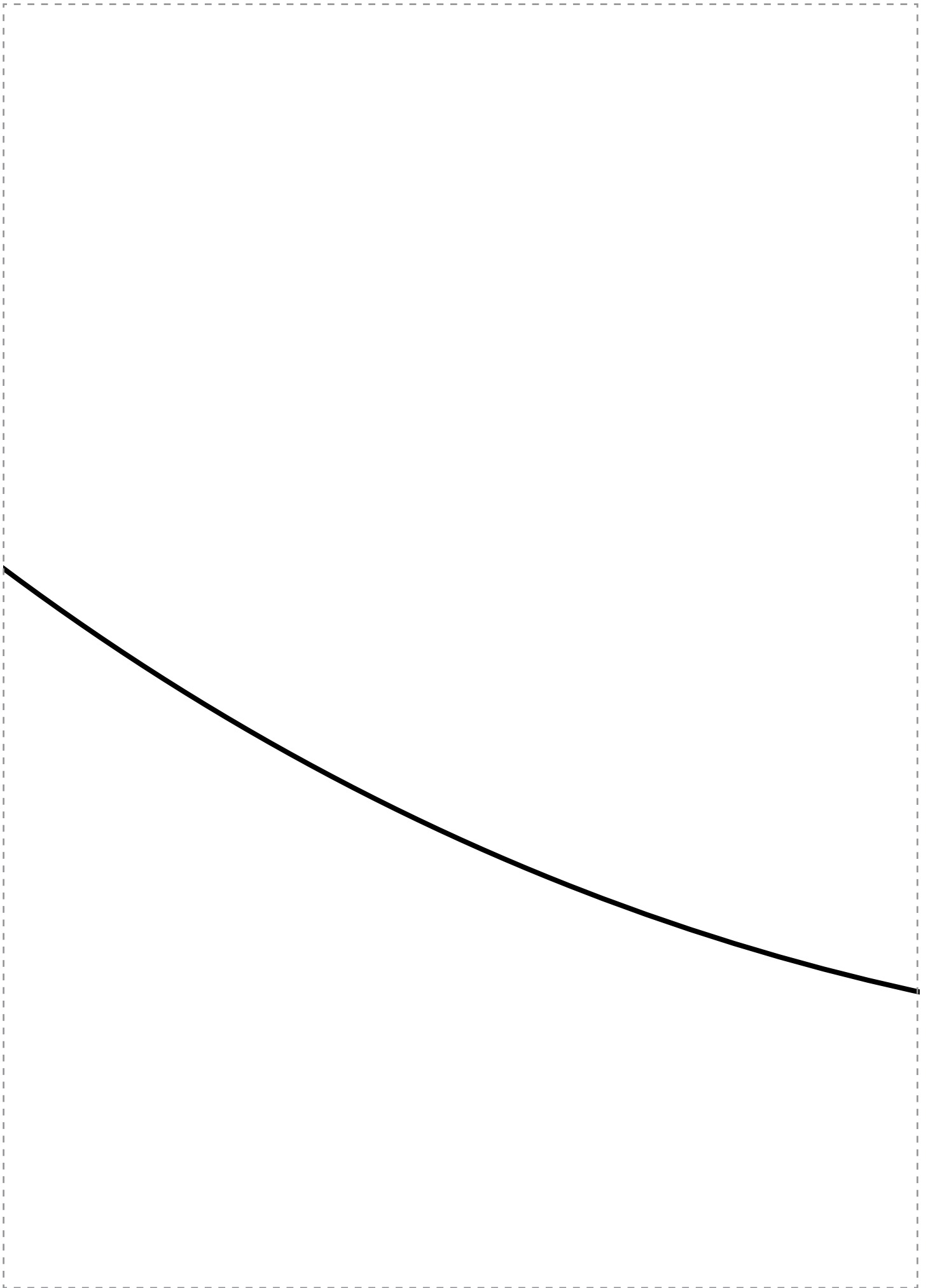
X = button positions  
|-| = buttonhole positions  
1cm seam allowance



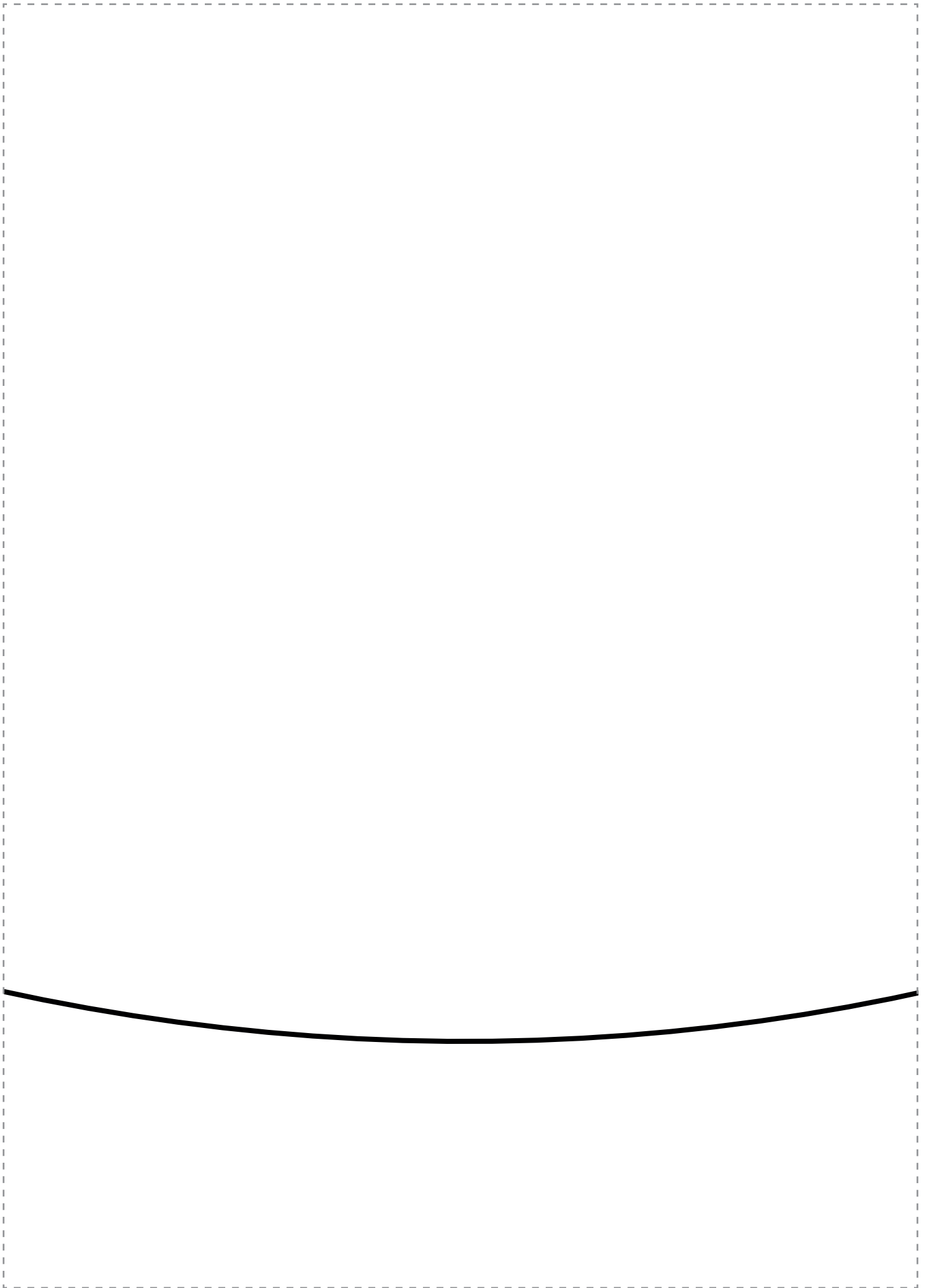


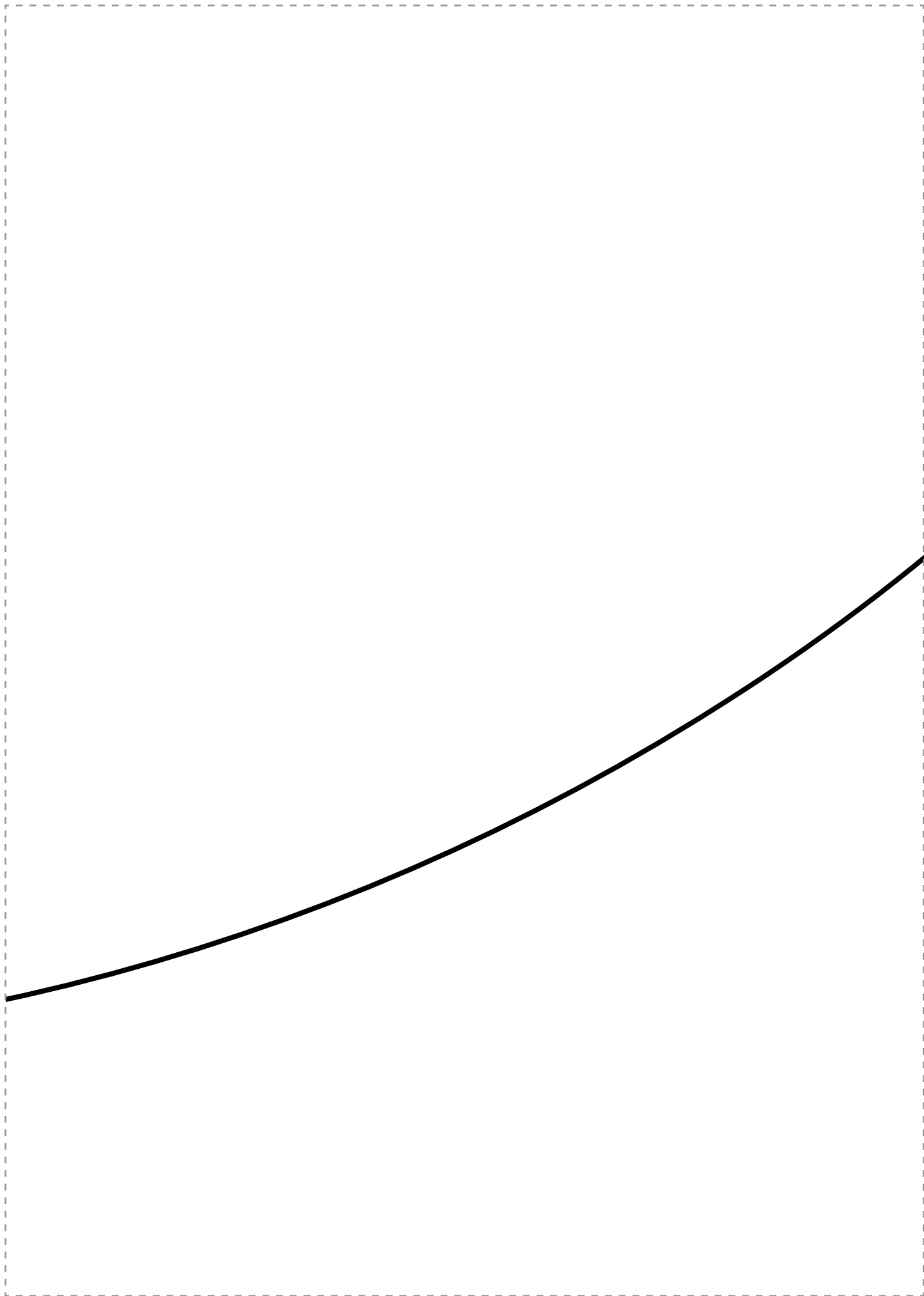


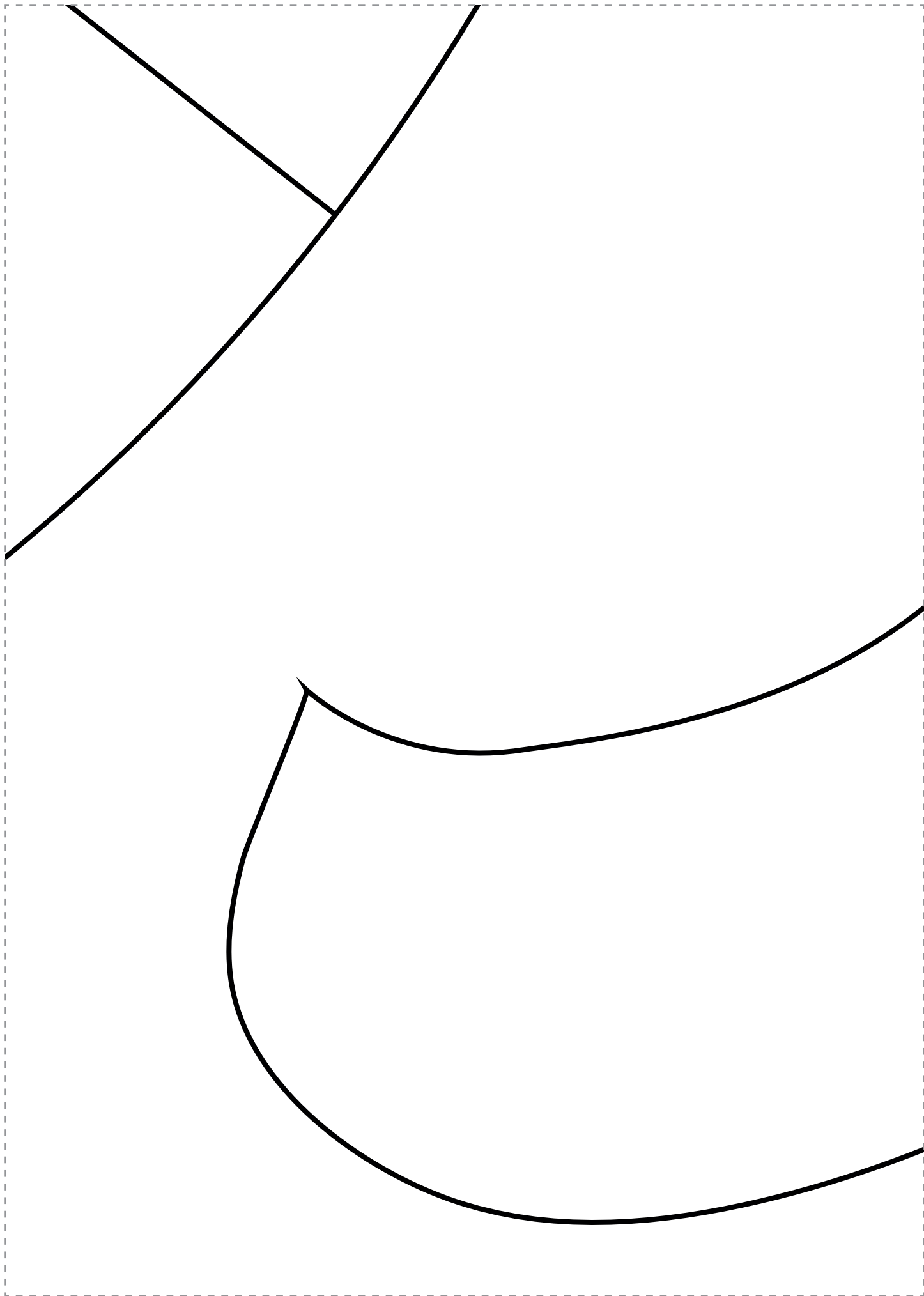














## VINTAGE CAPELET COLLAR

Cut one on fold from fabric  
Cut one on fold from lining  
Cut one on fold from interfacing  
1cm seam allowance