

sew

Issue 99 July issue 2017

BELLA TROUSERS TEMPLATE



Use these guides to get started today

FIND THE TEMPLATE YOU REQUIRE ON THE CONTENTS LIST BELOW AND JUST PRINT OUT THE PAGE OR PAGES YOU NEED FROM YOUR PRINT MENU

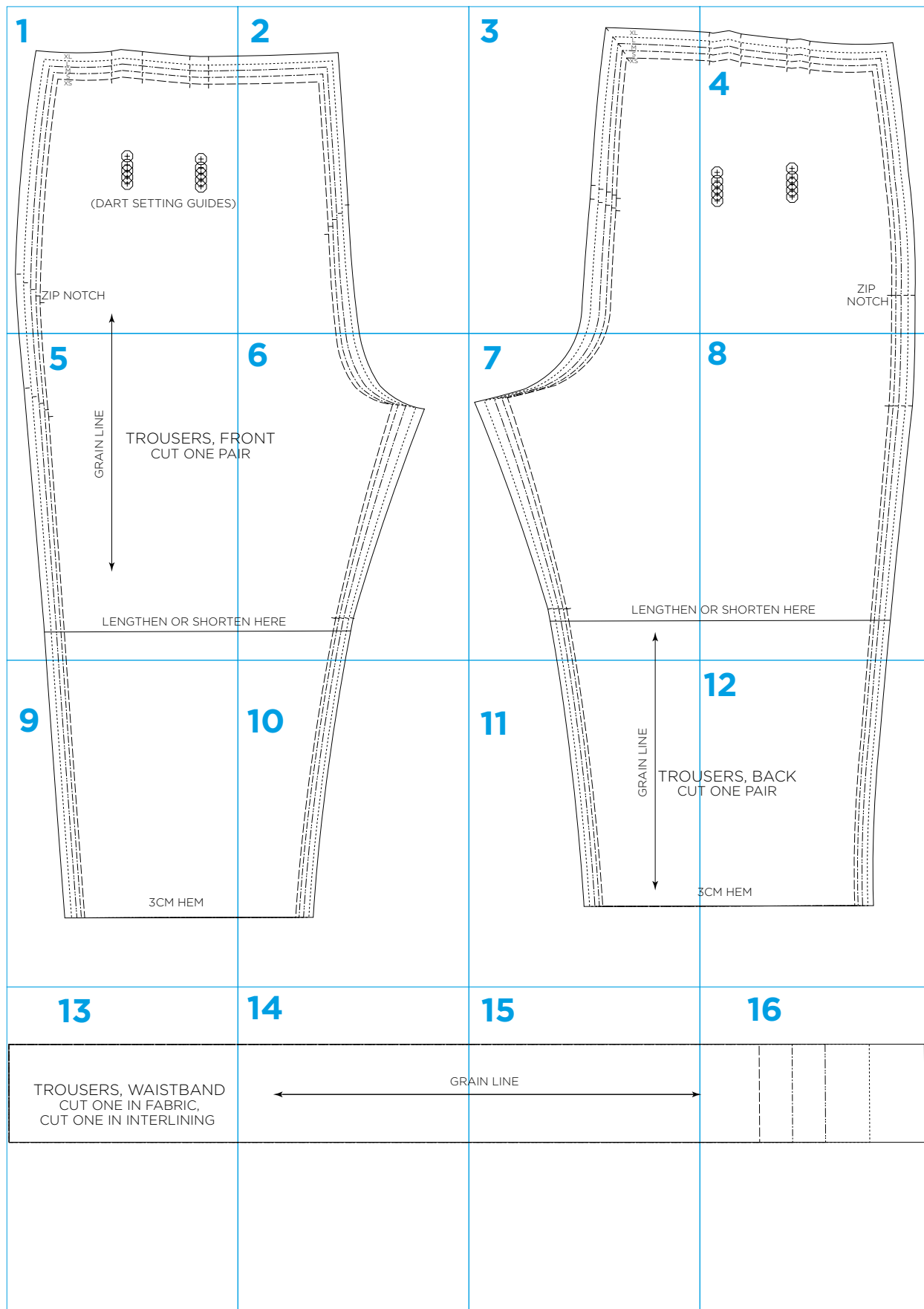
In your print menu, under Size options, be sure to select to print 'Actual Size', instead of 'Fit to Page'

Title: Bella trousers
Designer: Amanda Walker
Magazine page: 32
Total 16 pages to print

© ACEVILLE PUBLICATIONS LTD | WWW.SEWMAG.CO.UK

All projects, templates and patterns are for personal home use only and cannot be sold or used for commercial purposes.

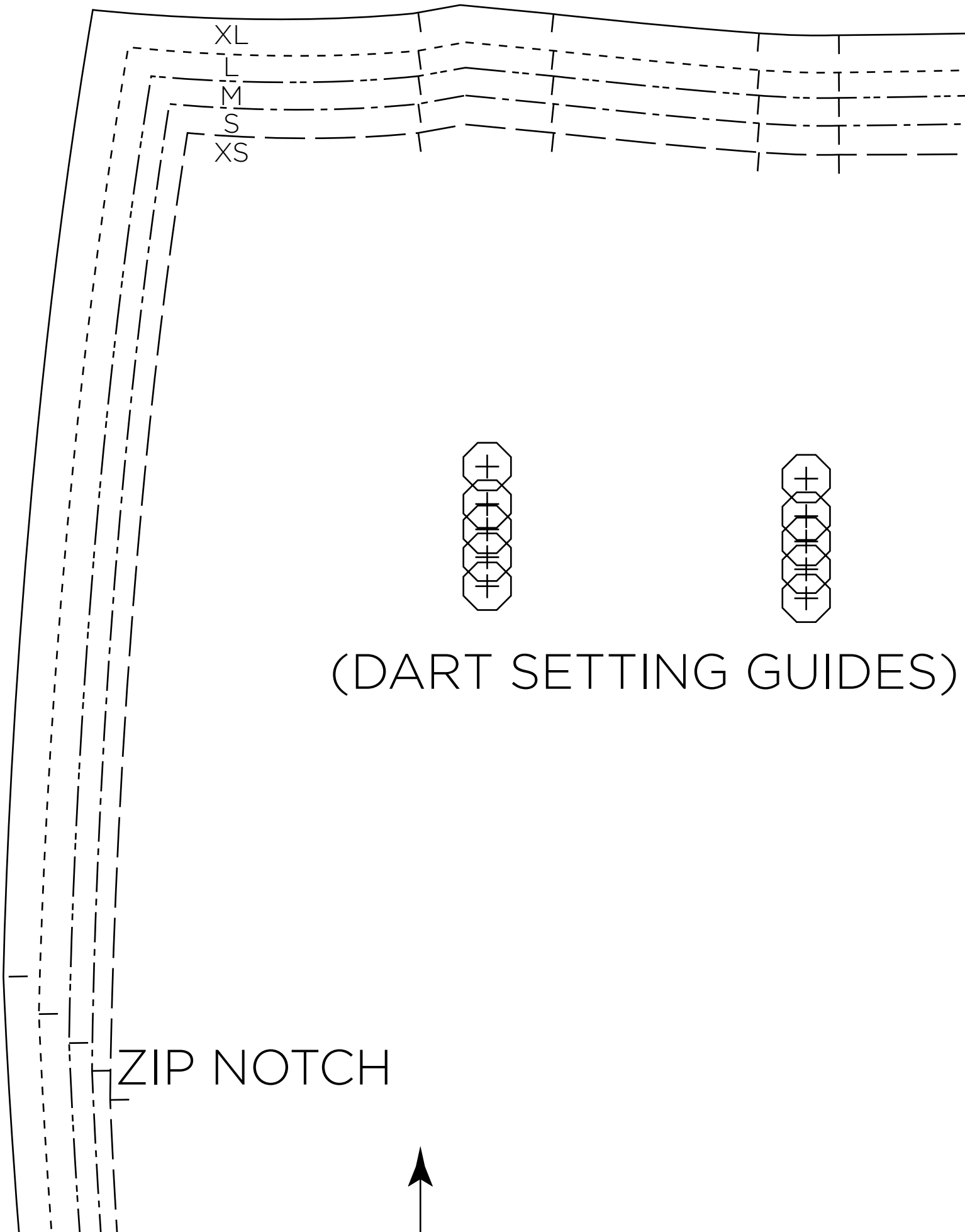
Title: Bella trousers
Designer: Amanda Walker
Magazine page: 32
Total 16 pages to print



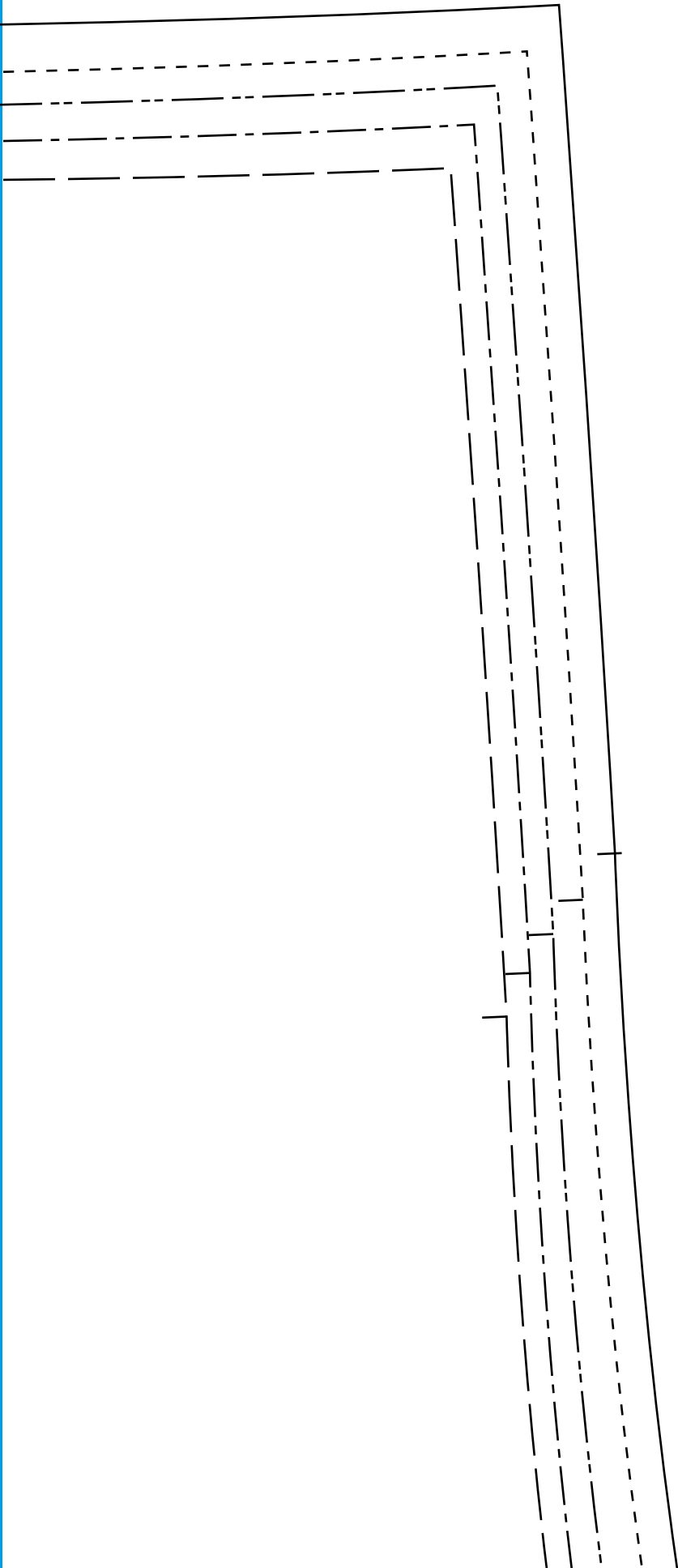
sew

www.sewmag.co.uk

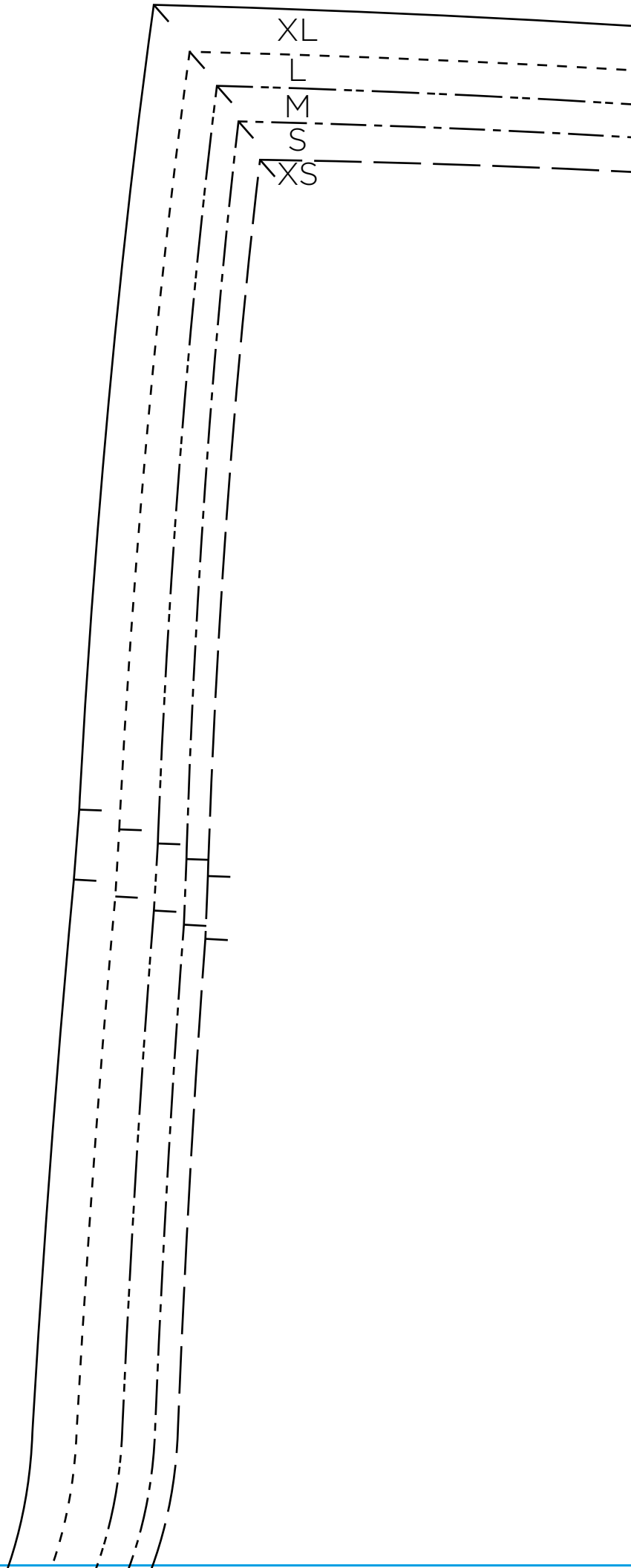
1



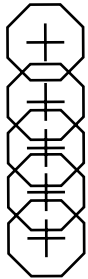
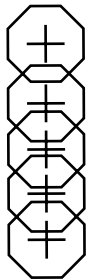
2



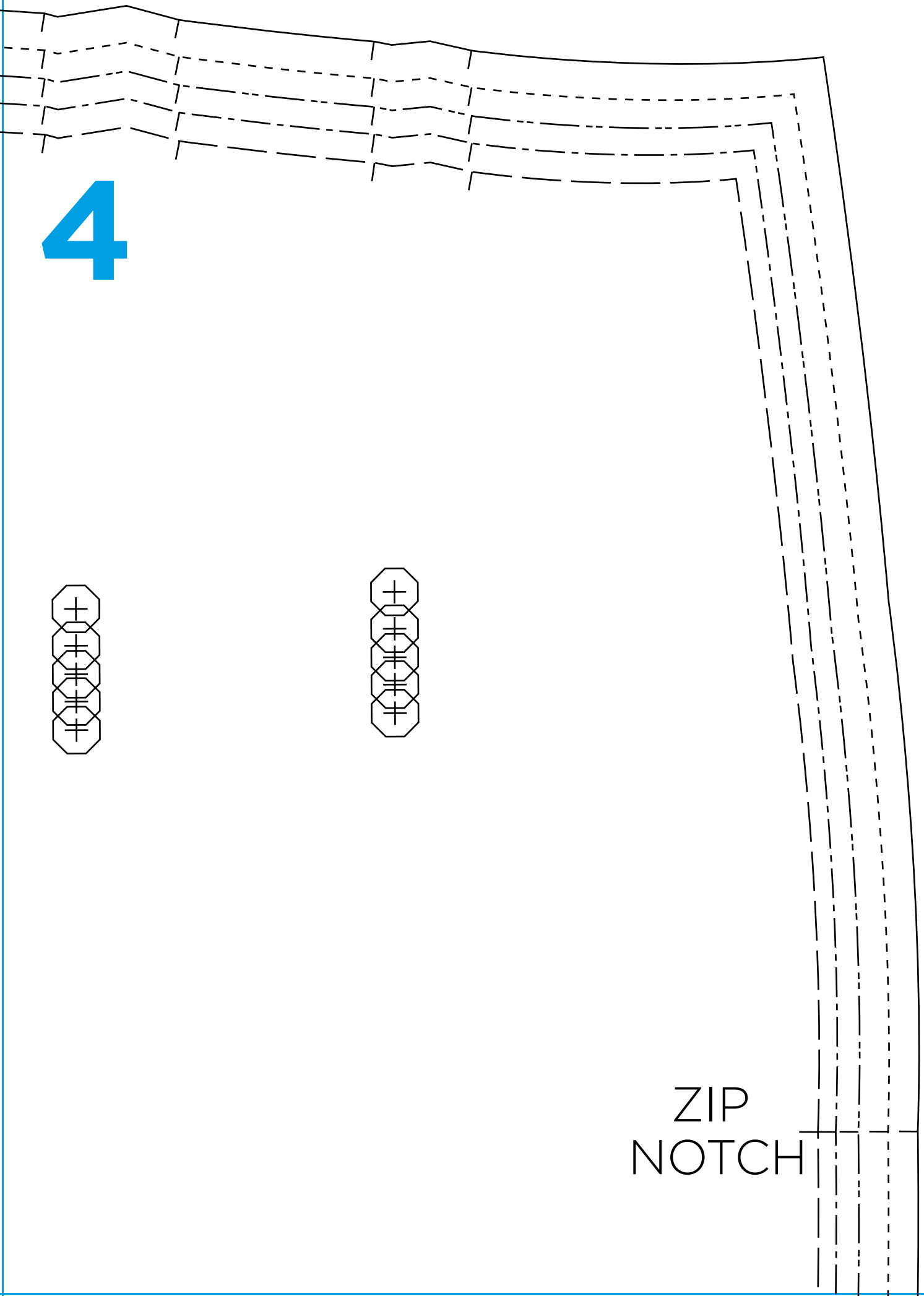
3



4



ZIP
NOTCH

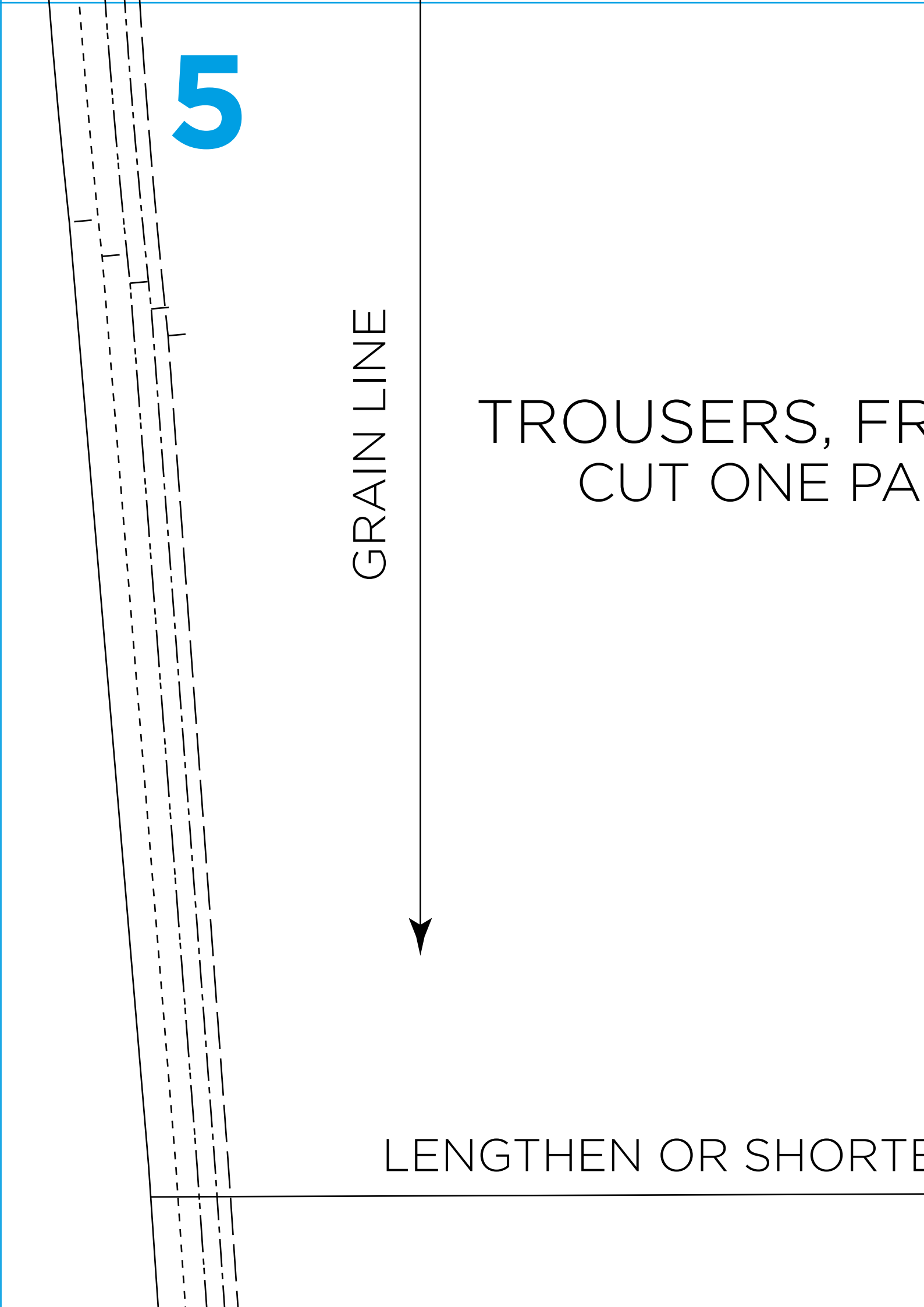


5

GRAIN LINE

TROUSERS, FR
CUT ONE PA

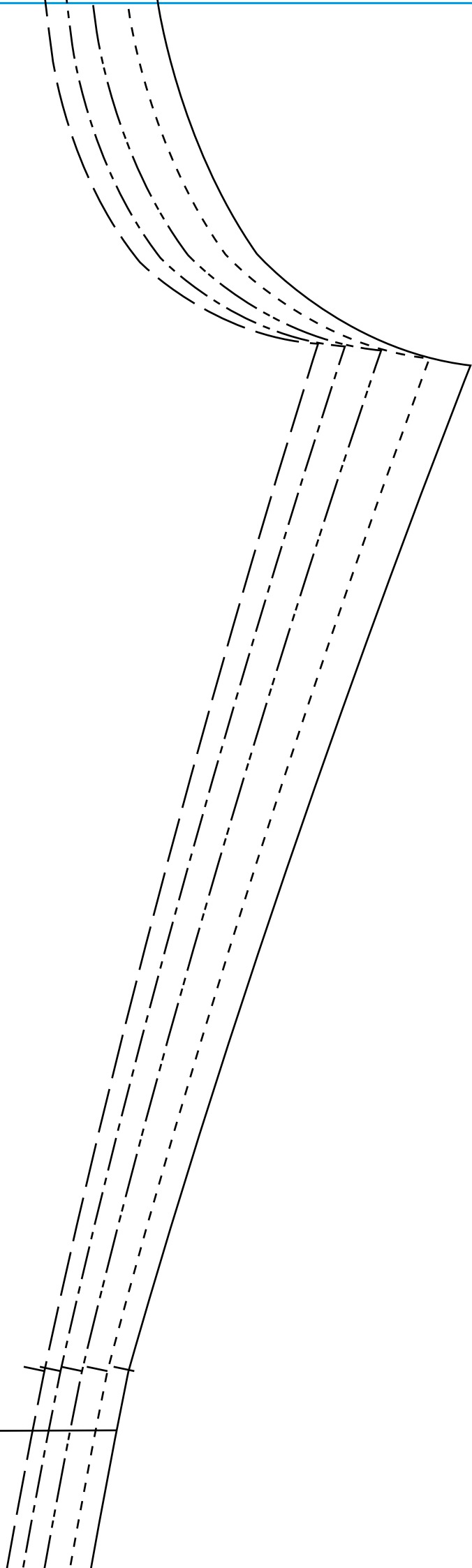
LENGTHEN OR SHORTE



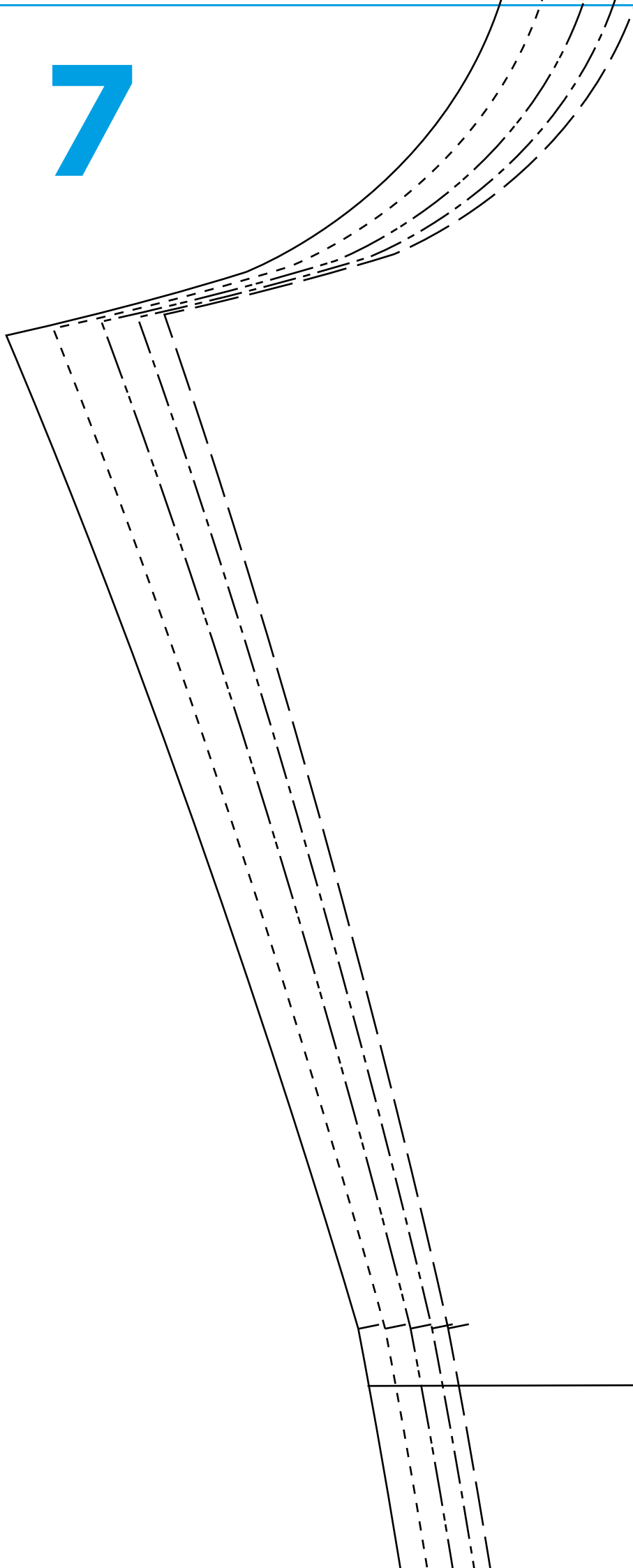
6

FRONT
PIECE

CUT HERE



7

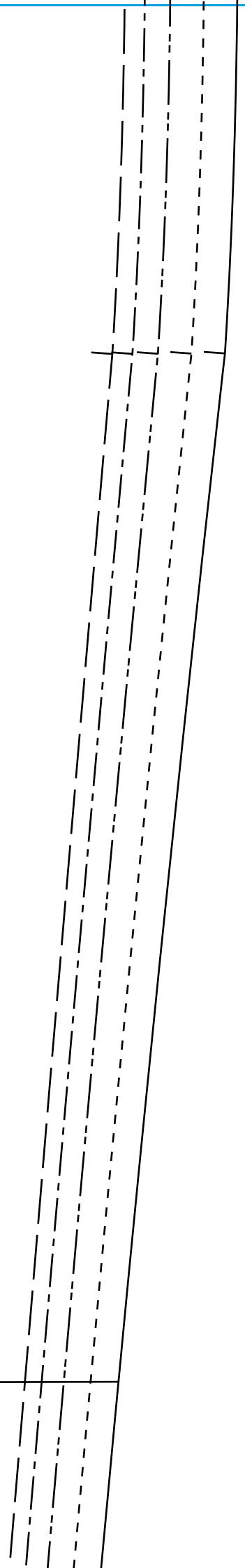


LENGTHEN C

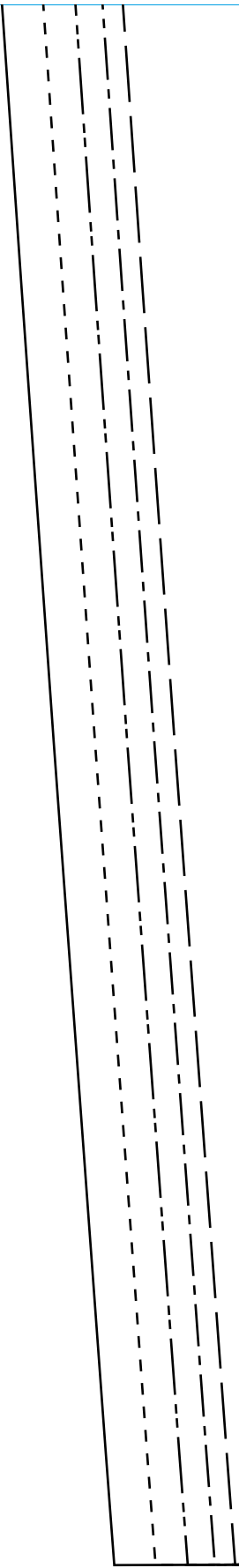


8

OR SHORTEN HERE

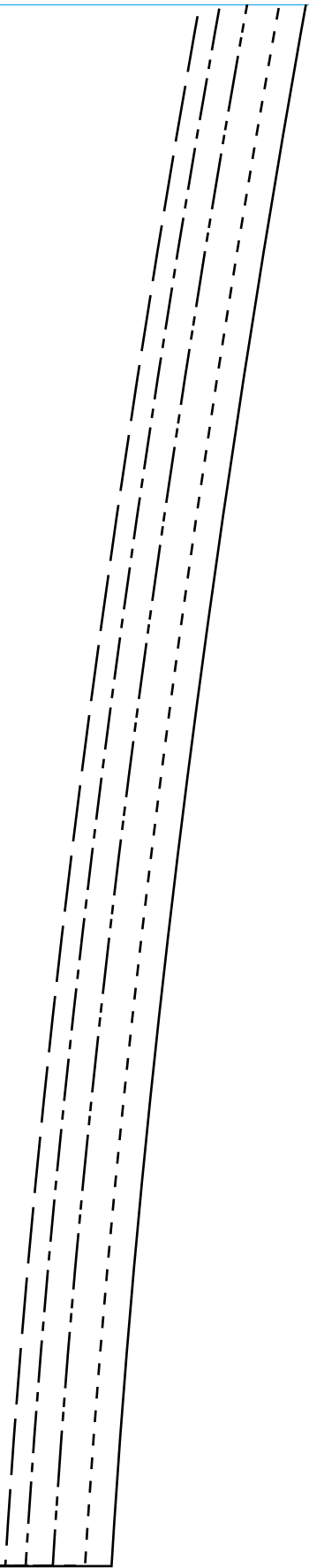


9

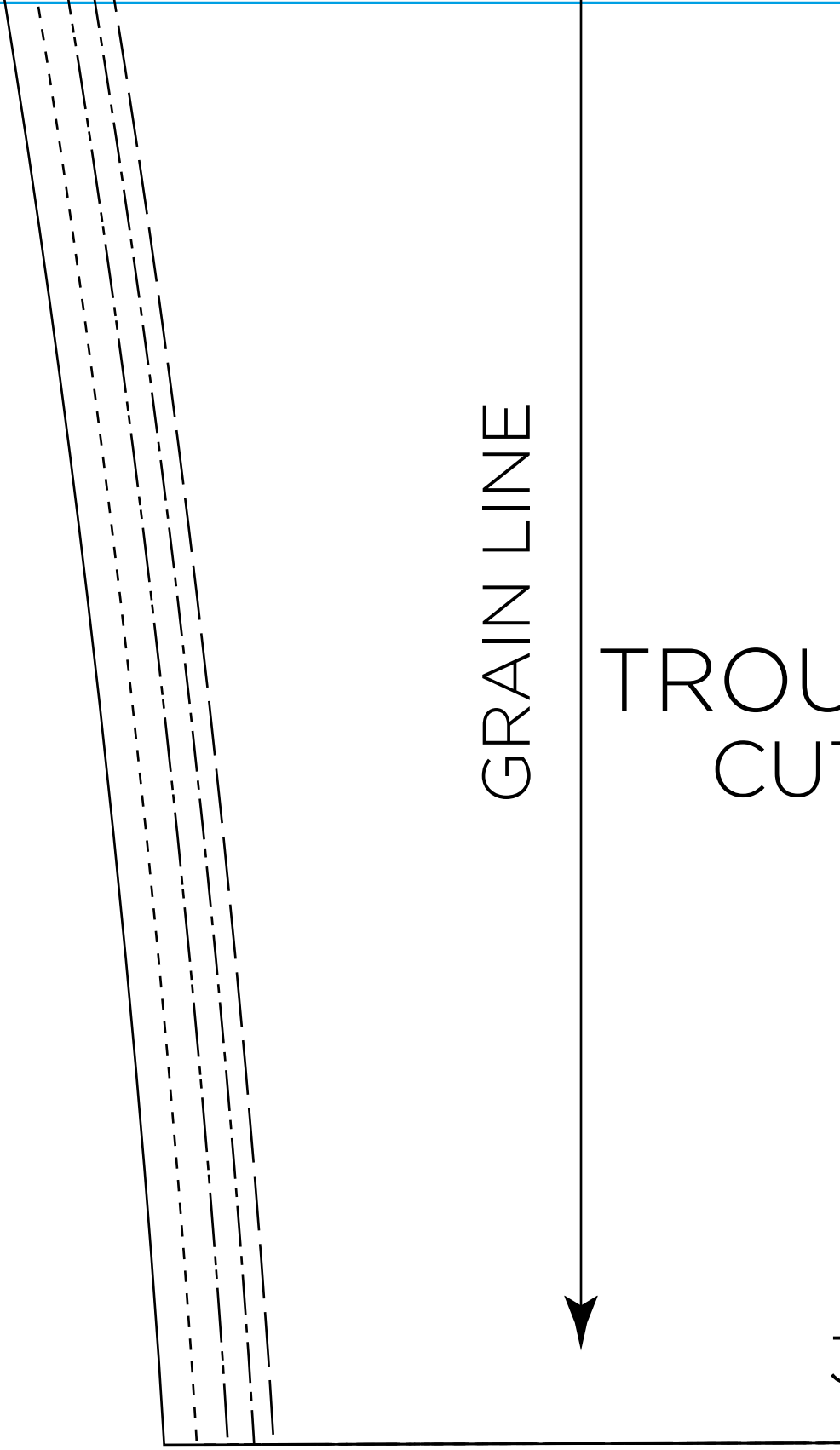


3CM HEM

10



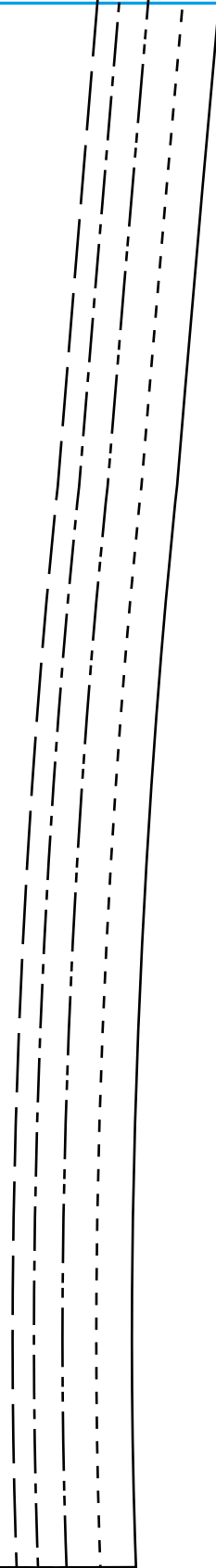
11



12

USERS, BACK
T ONE PAIR

3CM HEM



13

TROUSERS, WAISTBAND
CUT ONE IN FABRIC,
CUT ONE IN INTERLINING

14

GRA



15

AIN LINE



The diagram consists of a horizontal black line that spans the width of the page. At the right end of this line, there is a black arrowhead pointing to the right. The text 'AIN LINE' is positioned to the left of the line, centered vertically relative to it.

16

--	--	--	--	--