

# sew

ISSUE 148 APRIL 2021

## PATTERN DOWNLOAD

CUT OUT & KEEP

### BONNIE SKIRT

**Designer:** Posner & Posner

**Magazine page:** 28

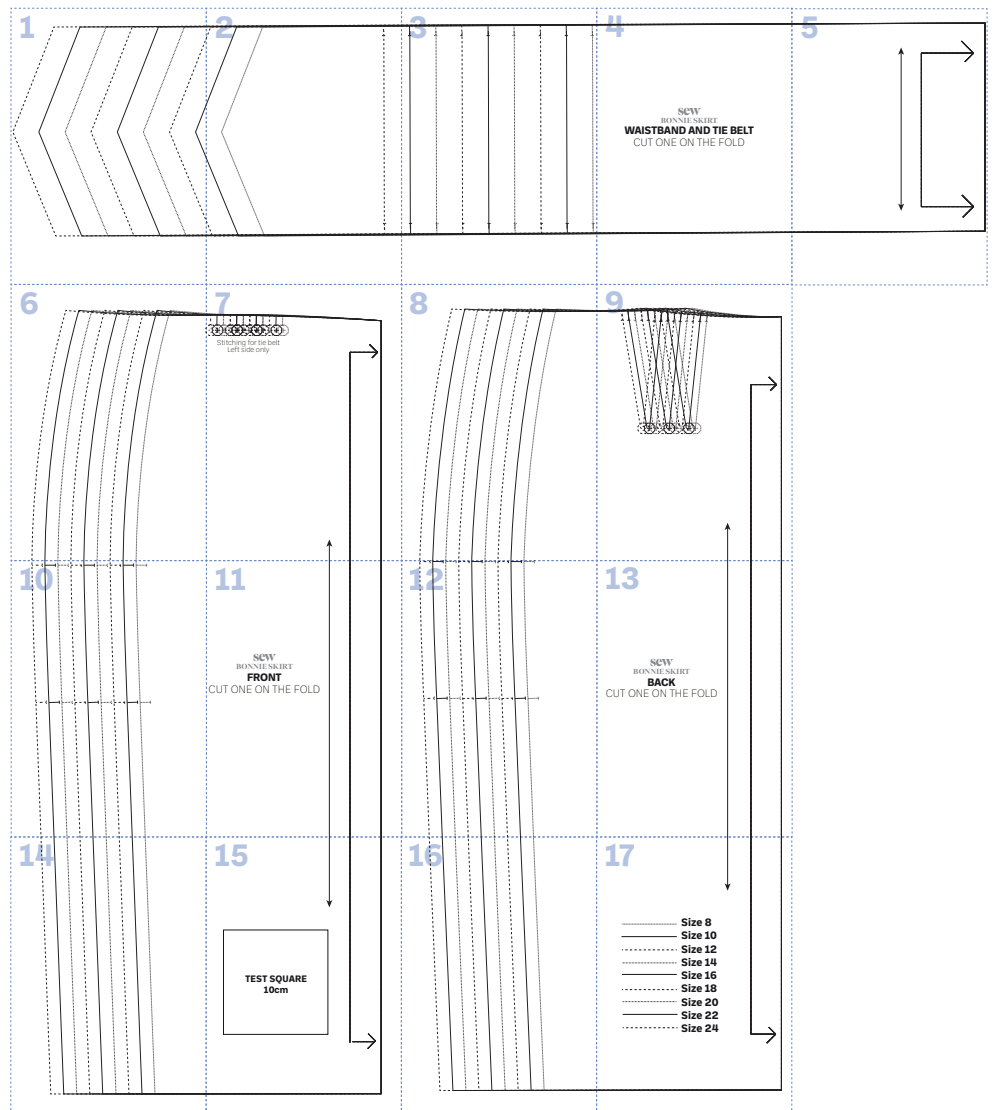


IN YOUR PRINT MENU, UNDER SIZE OPTIONS, BE SURE TO  
SELECT '**ACTUAL SIZE/100%**', INSTEAD OF 'FIT TO PAGE'

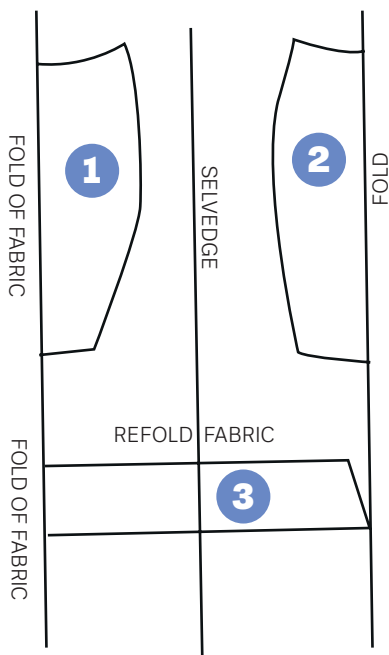
© ACEVILLE PUBLICATIONS LTD | SEWMAG.CO.UK

All projects, templates and patterns are for personal home use only and cannot be sold or used for commercial purposes.

## PATTERN LAYOUT



## CUTTING GUIDE



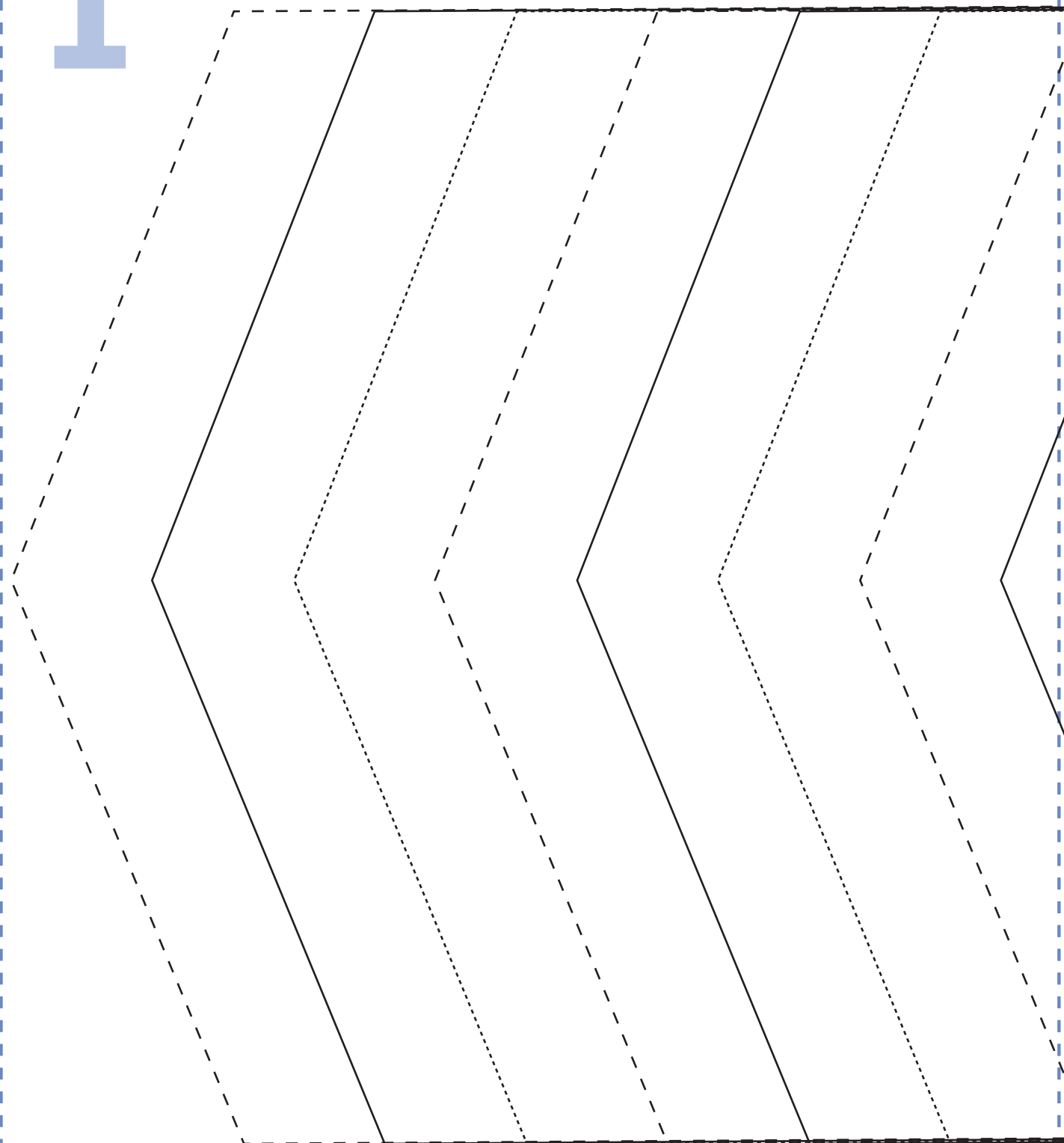
- 1 BACK SKIRT** Cut one on the fold
- 2 FRONT SKIRT** Cut one on the fold
- 3 WAISTBAND AND TIE** Cut one on the fold

## YOUR SIZING CHART

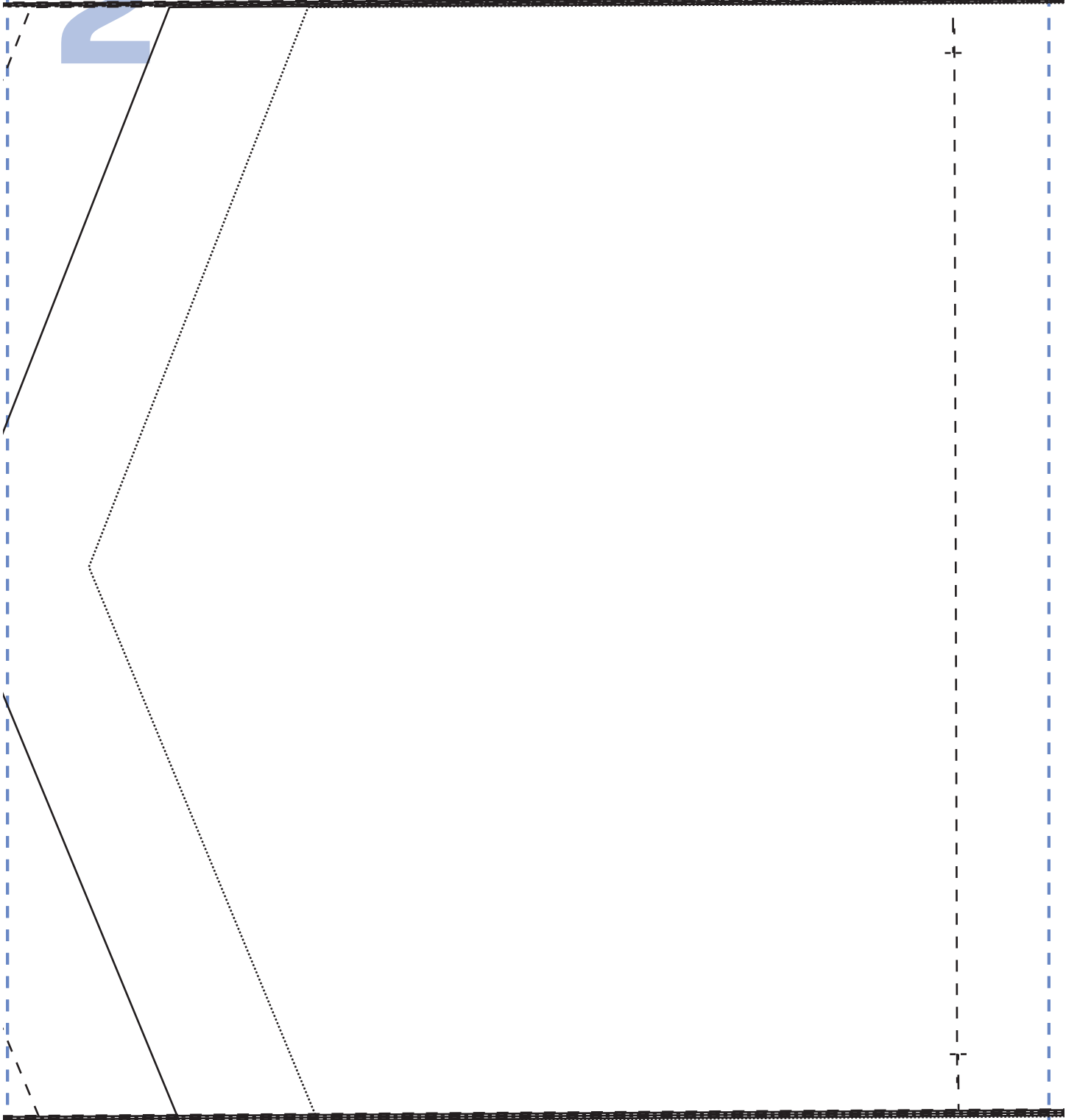
	8	10	12	14	16	18	20	22	24
Bust cm	78	83	88	93	98	103	108	113	118
Waist cm	59	64	69	74	79	84	89	94	99
Hip cm	85	88	93	98	103	108	113	118	123
Back neck to waist	39	40	41	42	43	44	45	46	47

Once you have your body measurements, choose the closest size from the chart below. Remember, there will be variations depending on which fabric and pattern you choose, so always make a toile first.

1



2

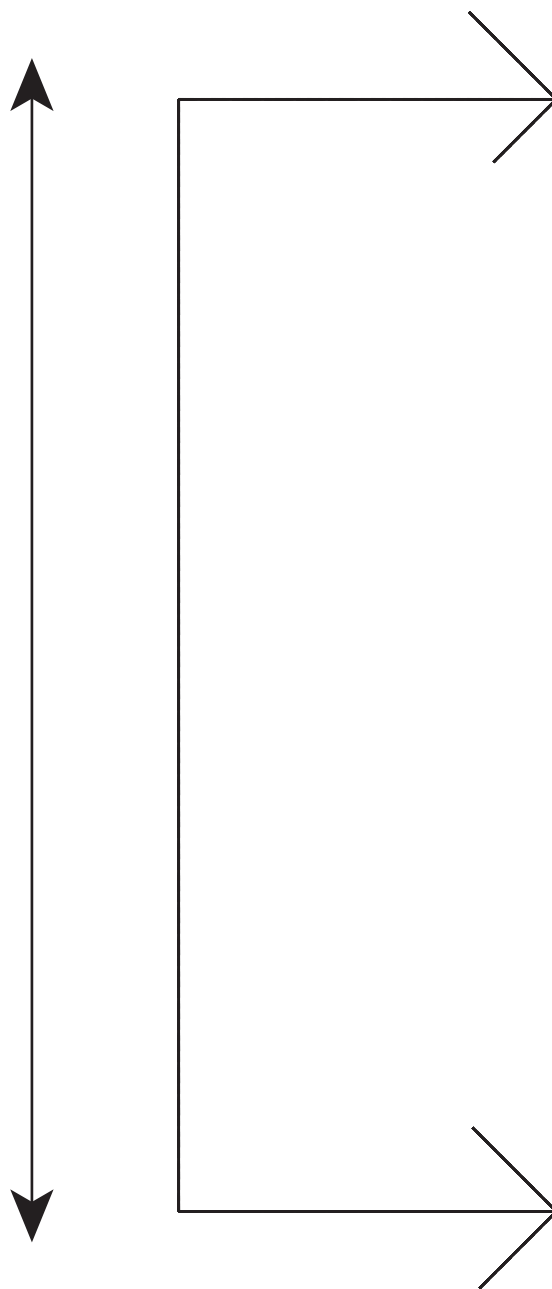


3

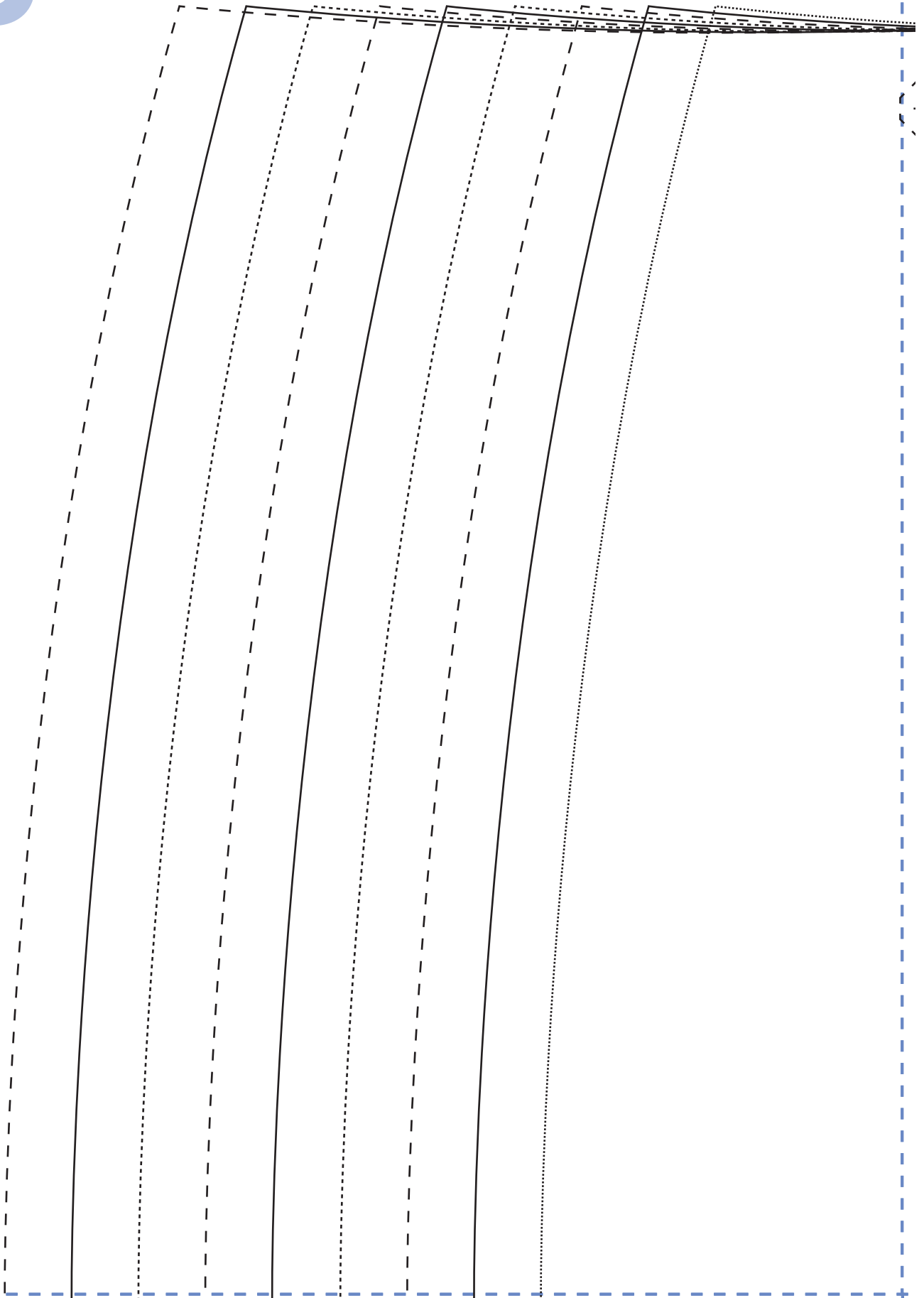
4

**sew**  
BONNIE SKIRT  
**WAISTBAND AND TIE BELT**  
CUT ONE ON THE FOLD

5

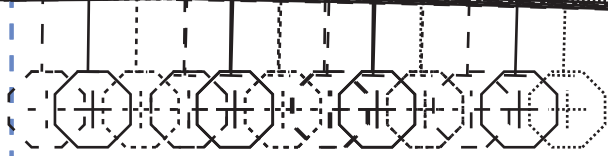


6

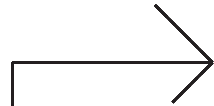




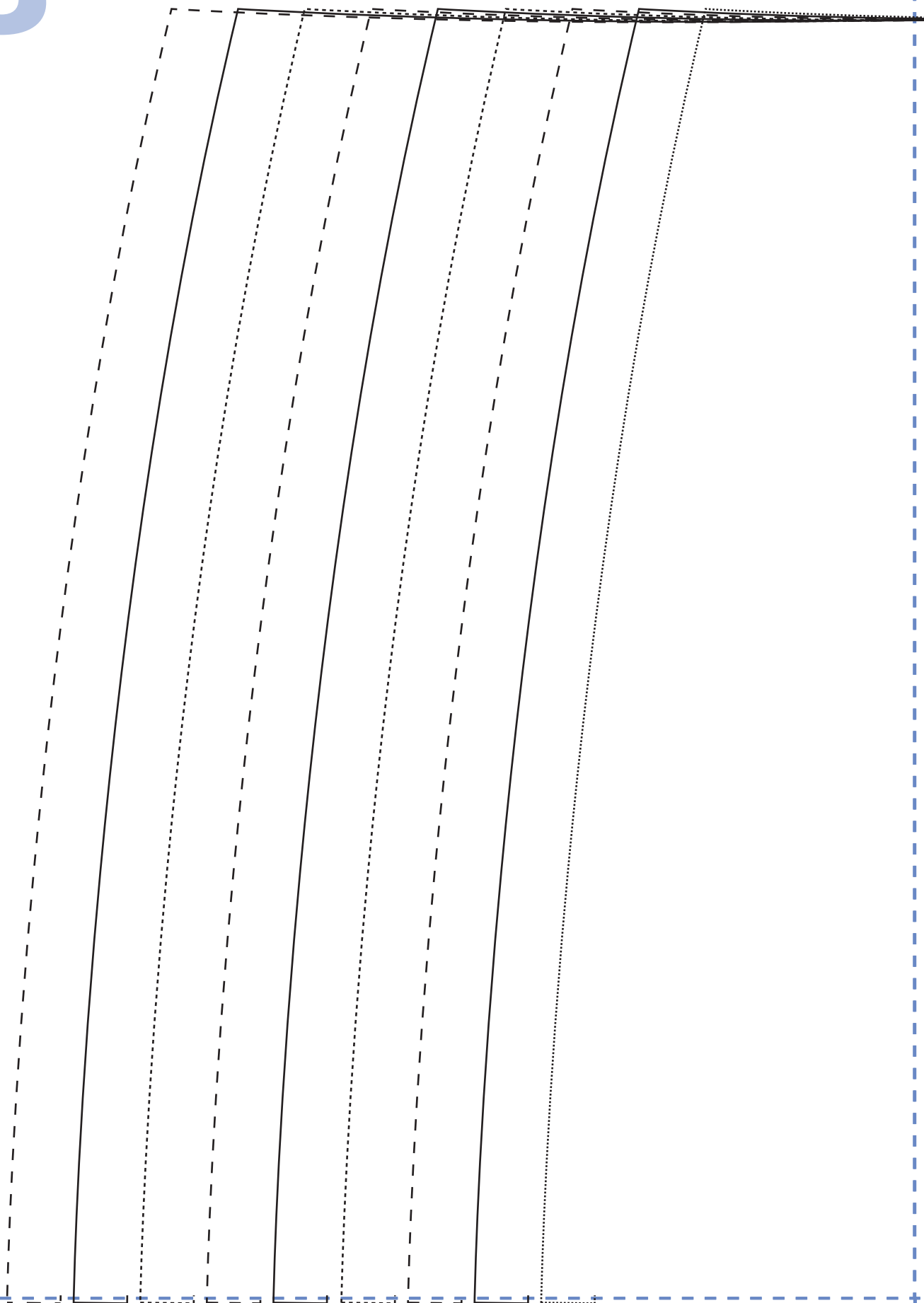
# 7



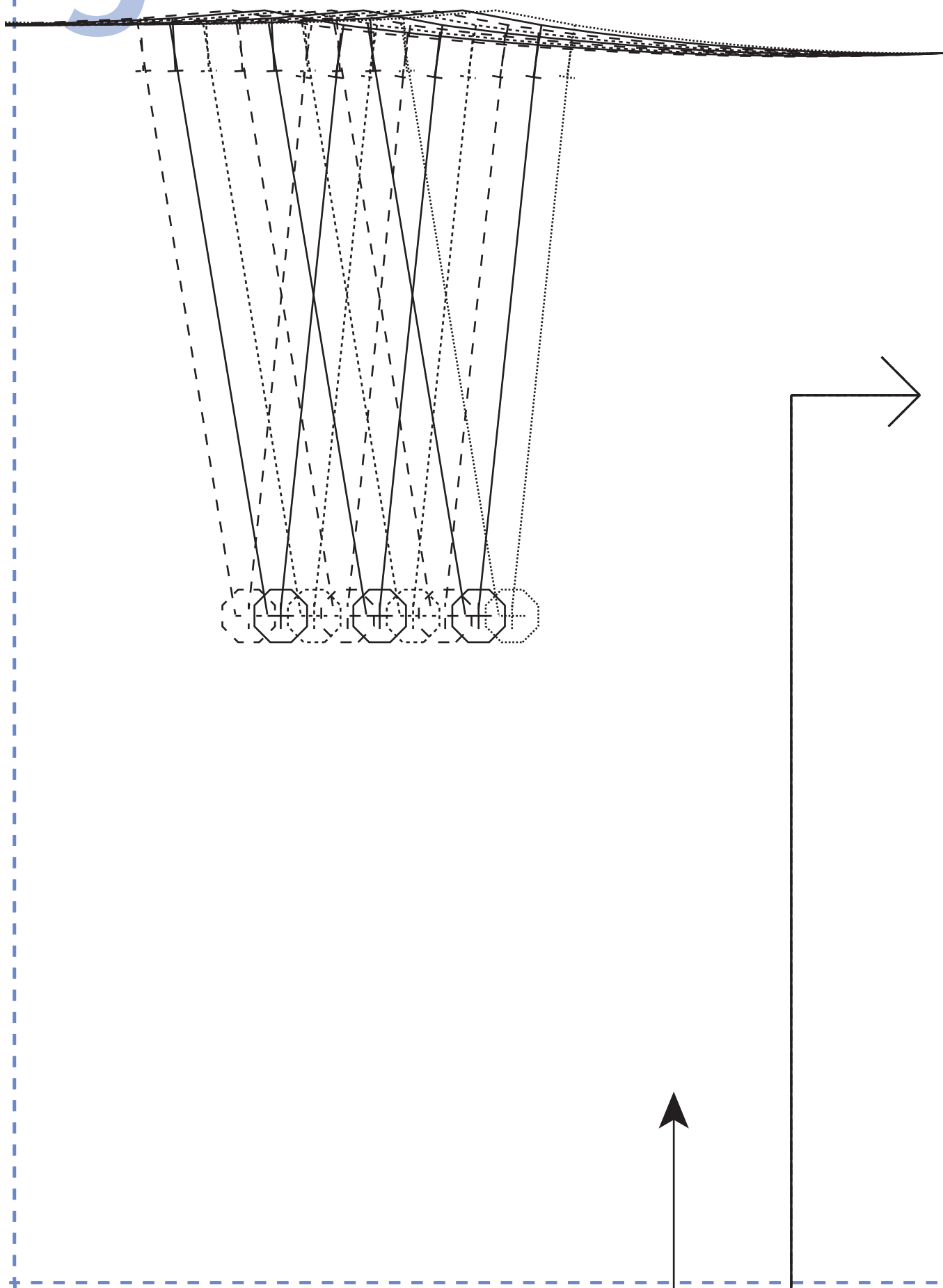
Stitching for tie belt  
Left side only



8



9



10

11

**sew**  
**BONNIE SKIRT**

**FRONT**

CUT ONE ON THE FOLD

12

# 13

**sew**  
BONNIE SKIRT

**BACK**

CUT ONE ON THE FOLD

14



# 15

**TEST SQUARE**  
**10cm**

16

# 17



..... **Size 8**  
\_\_\_\_\_ **Size 10**  
- - - - - **Size 12**  
..... **Size 14**  
\_\_\_\_\_ **Size 16**  
- - - - - **Size 18**  
..... **Size 20**  
\_\_\_\_\_ **Size 22**  
- - - - - **Size 24**

