

sew

Issue 97 May issue 2017

**PRINT
OUT
& KEEP**

GABRIELLE JACKET TEMPLATES

Use these guides to get started today

JUST PRINT OUT THE PAGE OR PAGES YOU
NEED FROM YOUR PRINT MENU

In your print menu, under Size options, be sure to
select to print 'Actual Size', instead of 'Fit to Page'

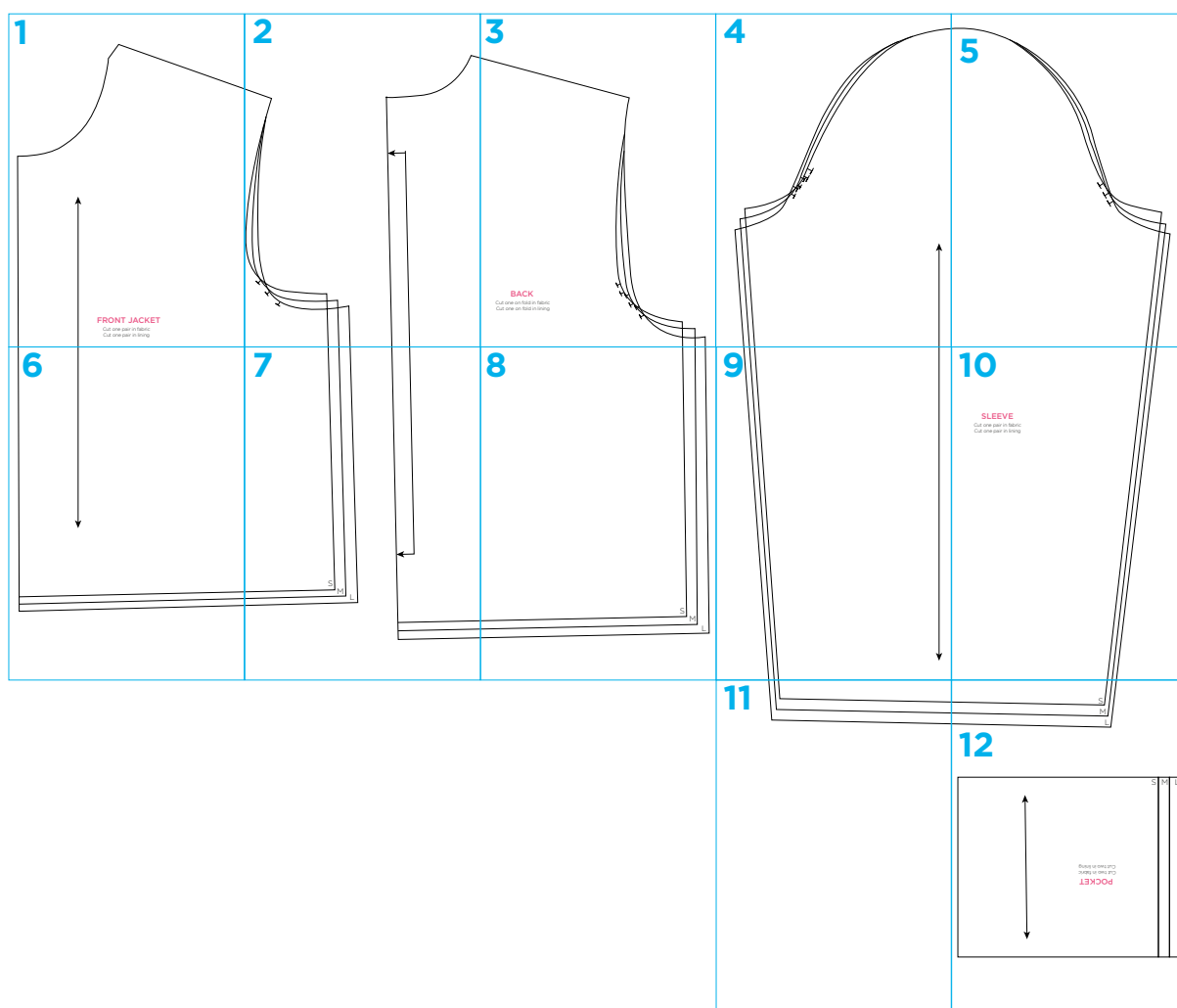
Title: Gabrielle Jacket
Designer: Amanda Walker
Magazine page: 32
Total 14 pages to print

© ACEVILLE PUBLICATIONS LTD | WWW.SEWMAG.CO.UK

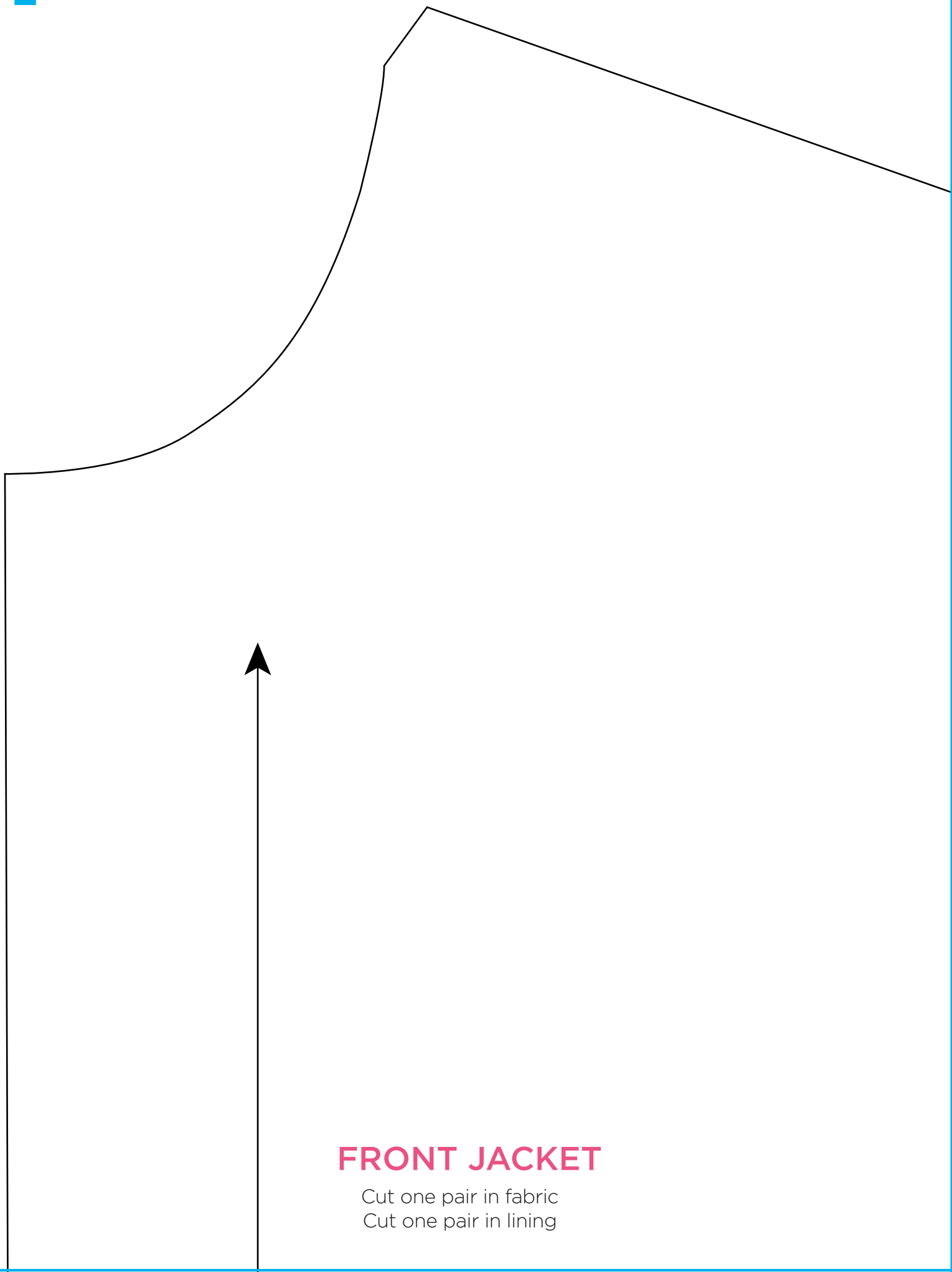
All projects, templates and patterns are for personal home use only and cannot be sold or used for commercial purposes.

Title: Gabrielle Jacket
Designer: Amanda Walker
Magazine page: 32
Total 14 pages to print

SIZE	BUST
Small (8-10)	88cm
Medium (10-12)	92cm
Large (12-14)	96cm



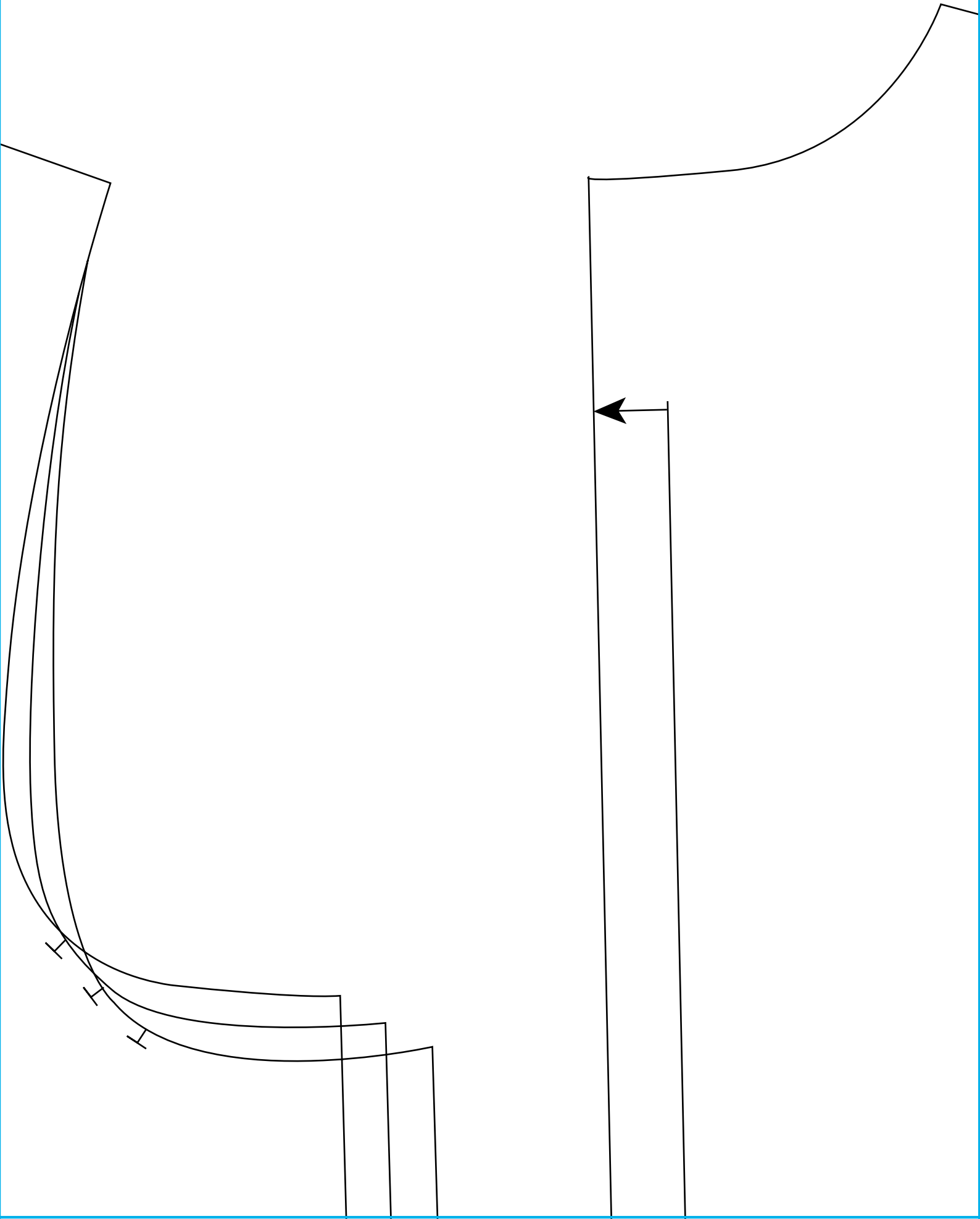
1



FRONT JACKET

Cut one pair in fabric
Cut one pair in lining

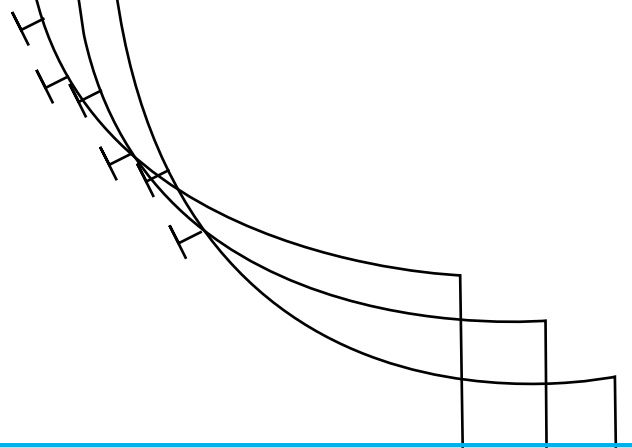
2



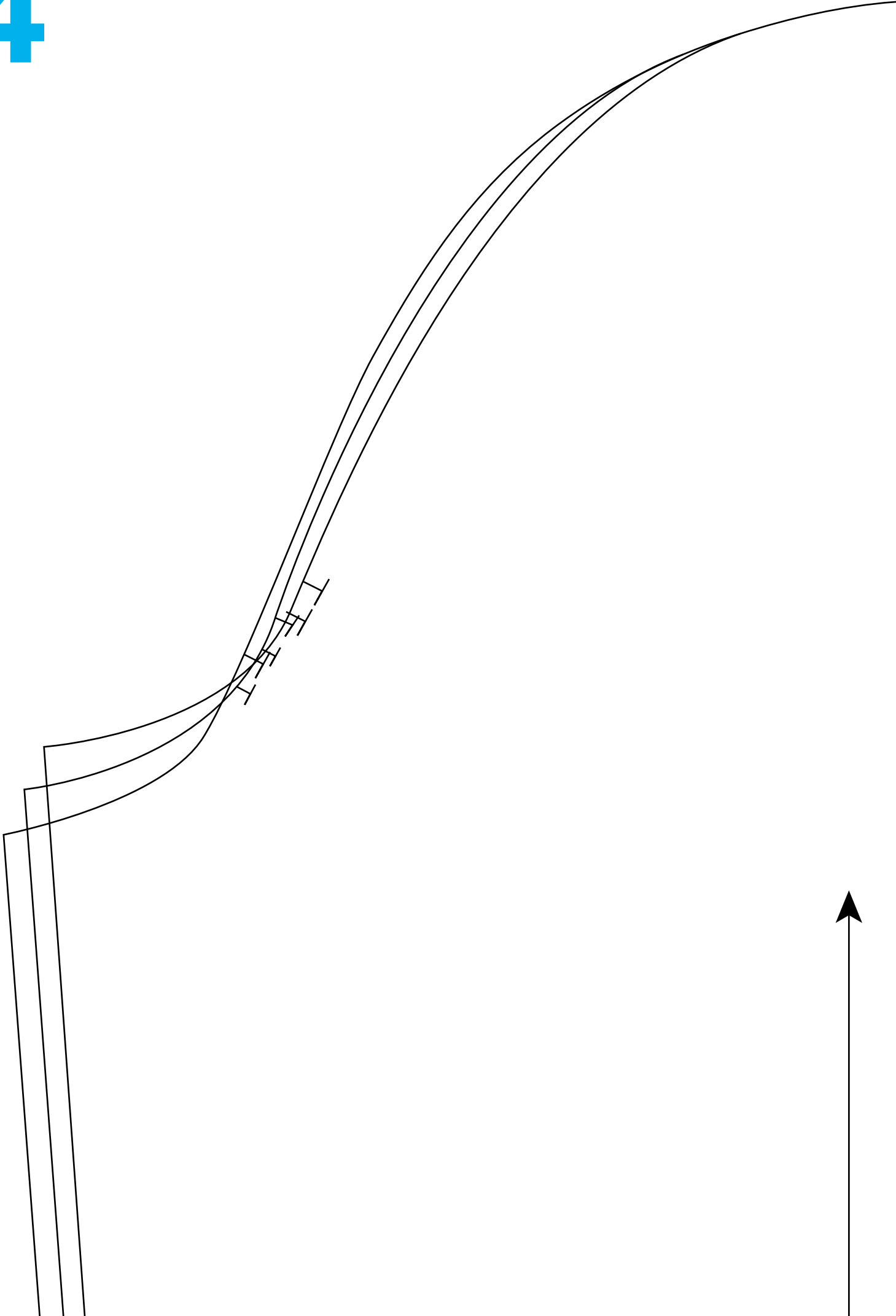
3

BACK

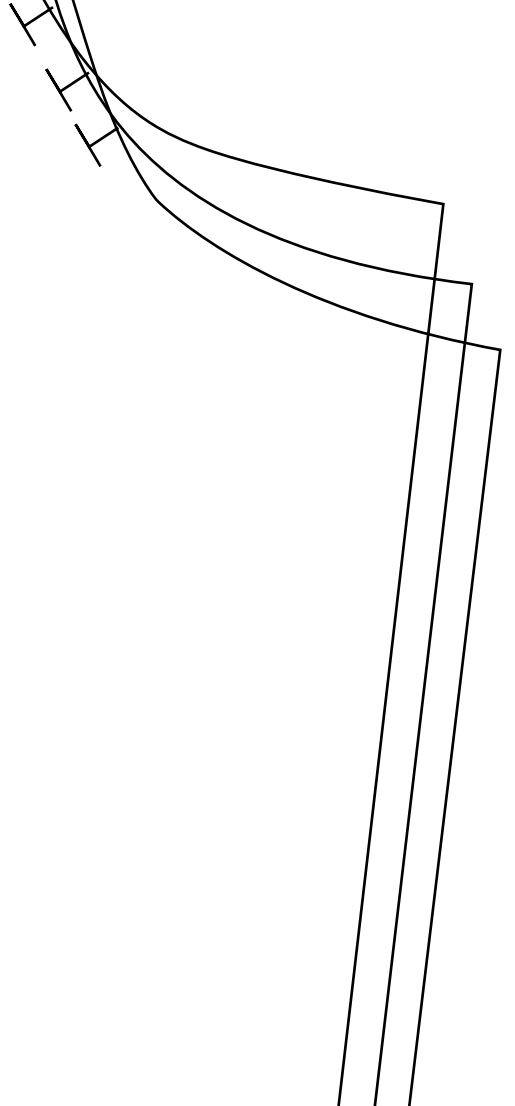
Cut one on fold in fabric
Cut one on fold in lining



4



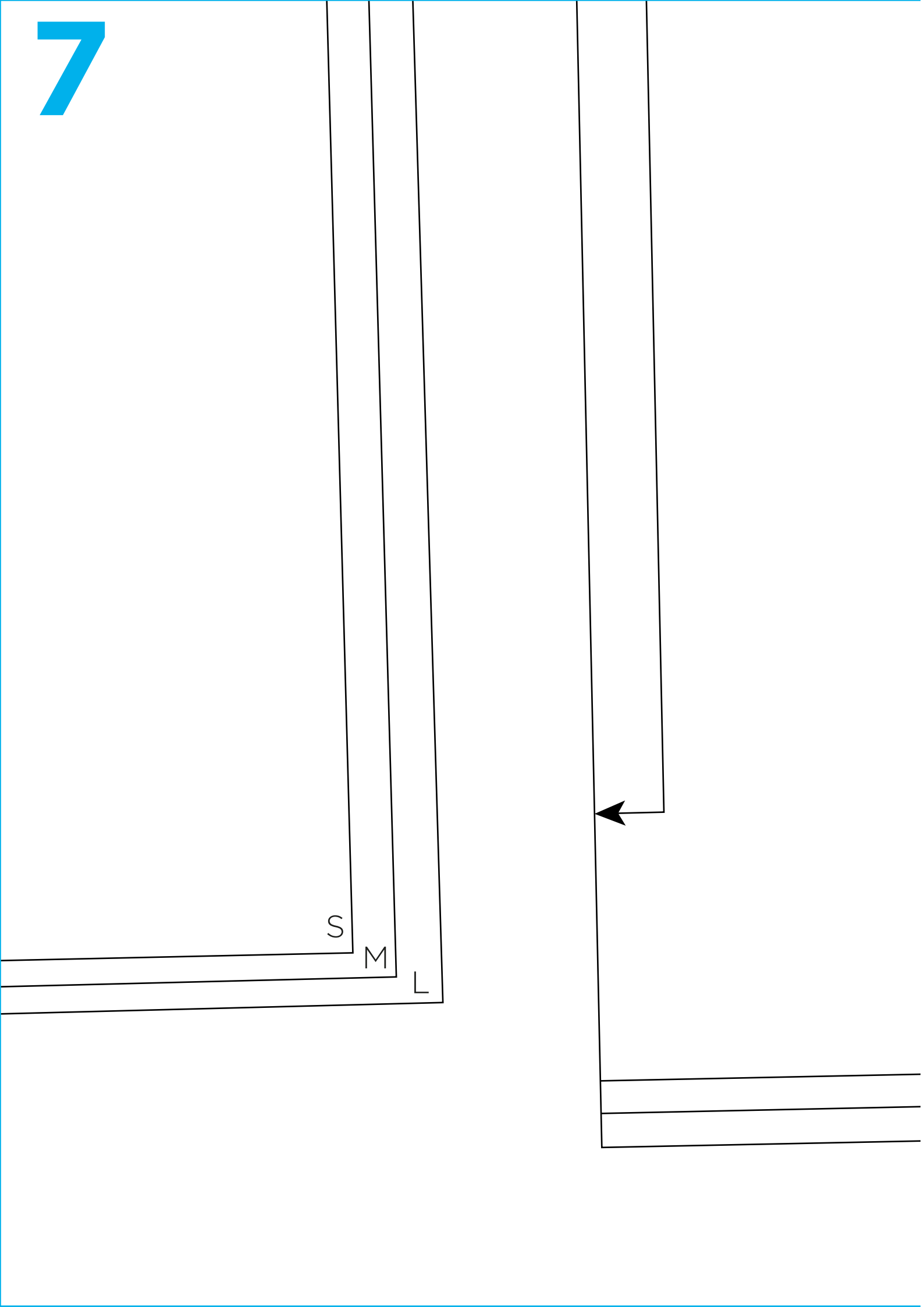
5



6



7



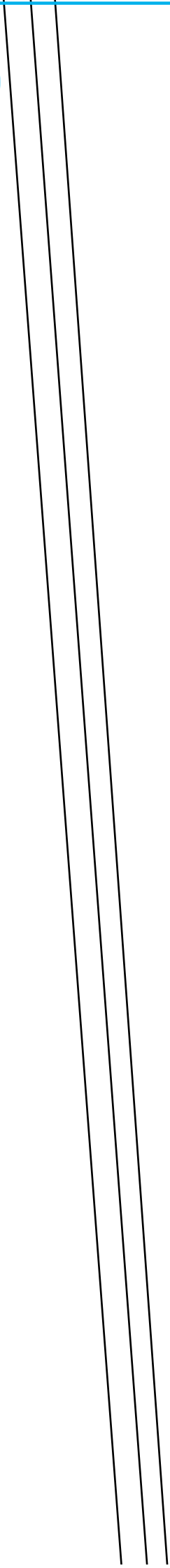
8

S

M

L

9

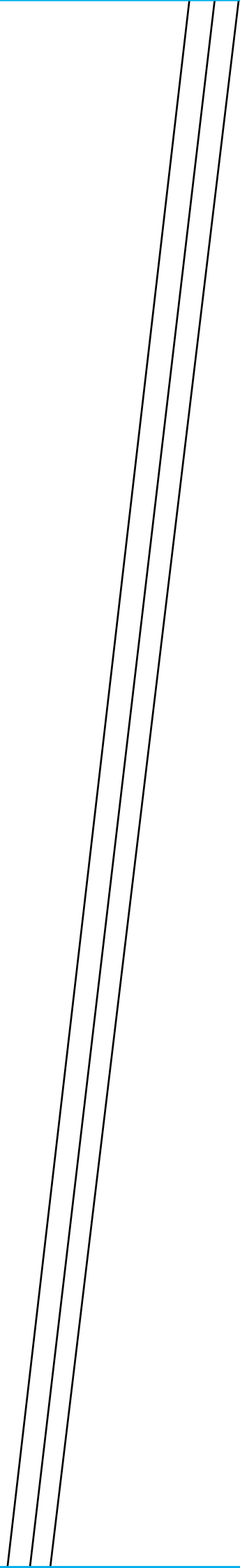


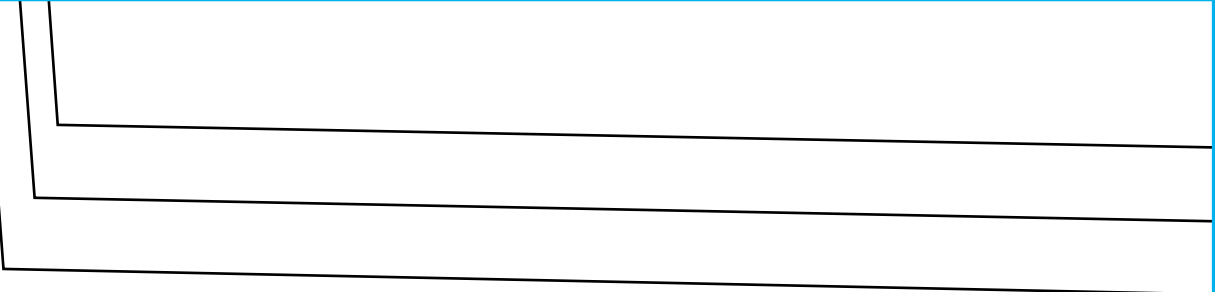
10

SLEEVE

Cut one pair in fabric

Cut one pair in lining





S

M

L

12

S

M

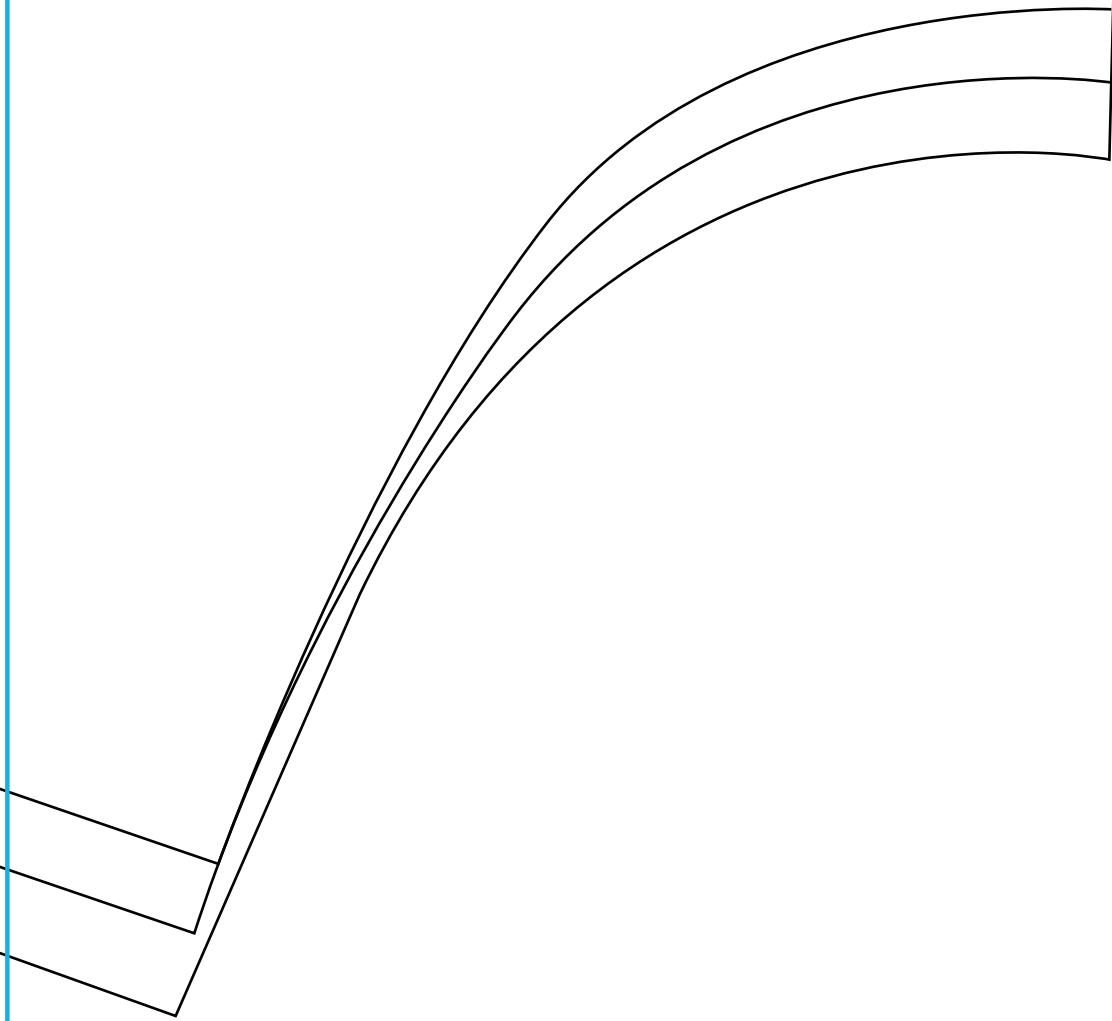
L

Cut two in fabric
Cut two in lining

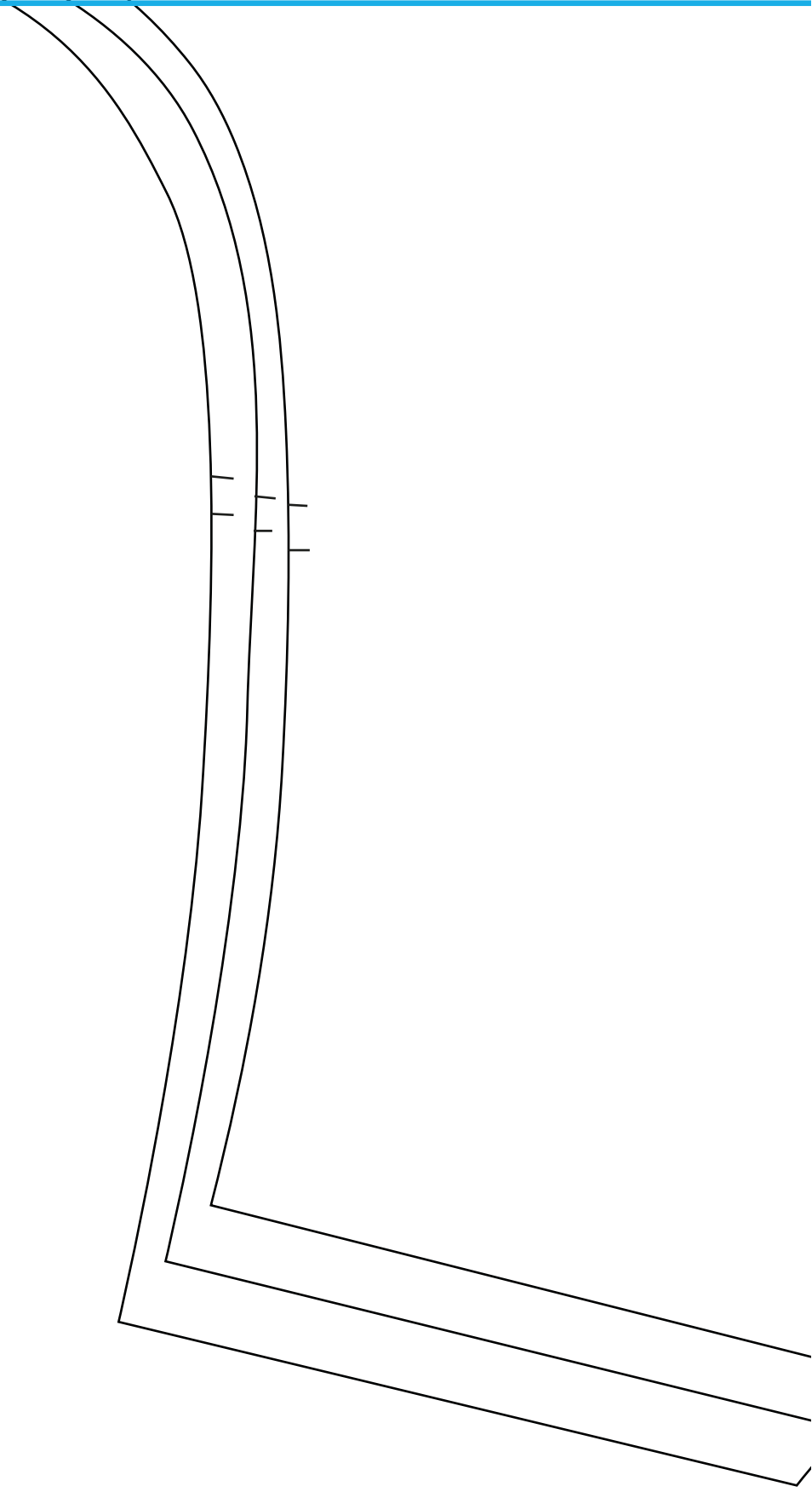
POCKET

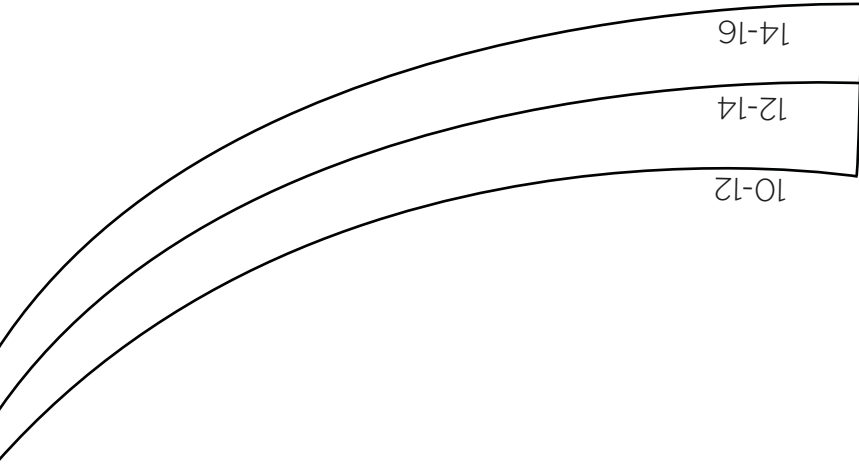


14

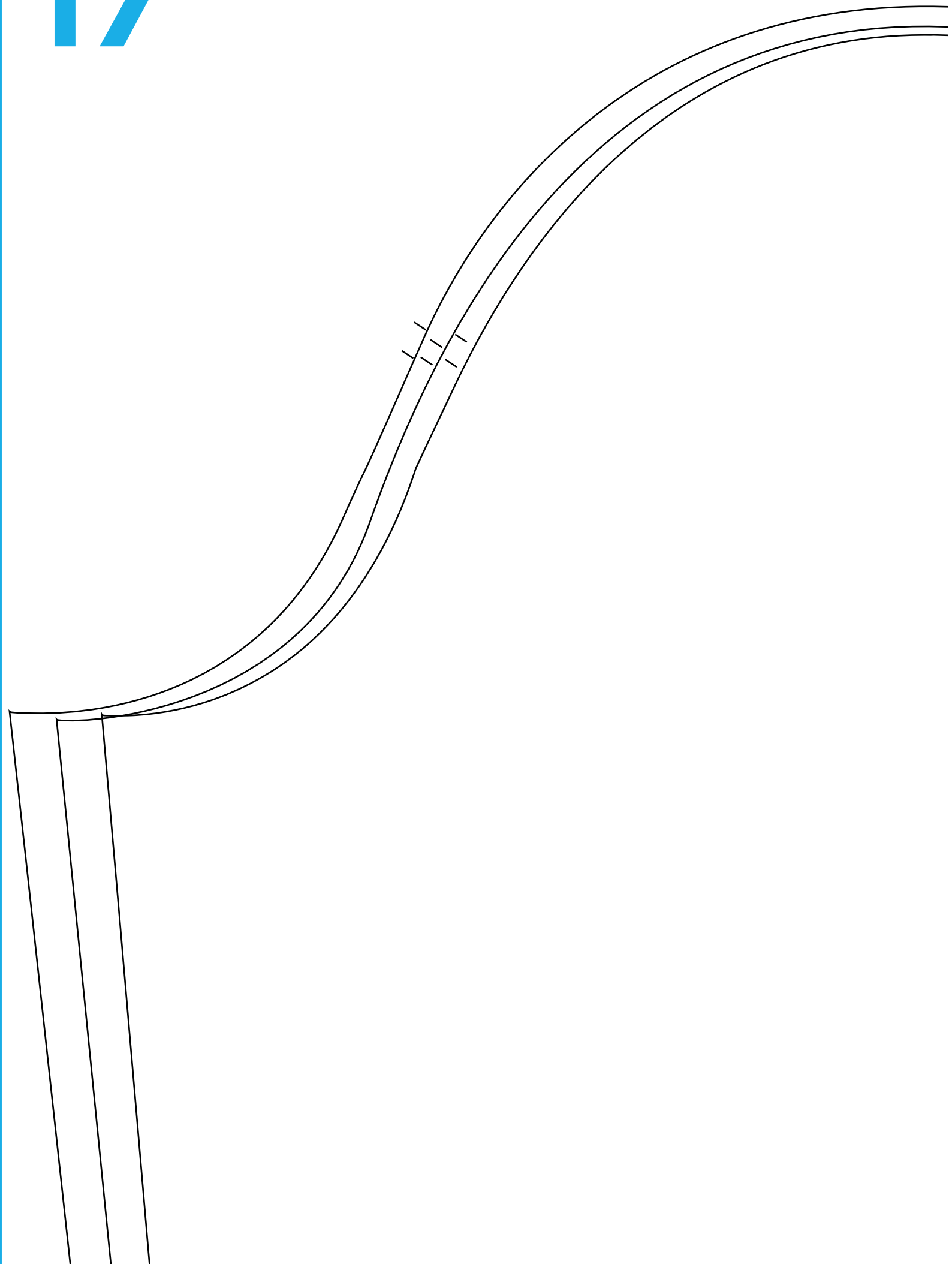


15





17



18



SLEEVE
Cut one pair

19

10-12

12-14

14-16



20

