

sew

Issue 98 June issue 2017

**PRINT
OUT
& KEEP**

LEA TOP TEMPLATES

Use these guides to get started today

JUST PRINT OUT THE PAGE OR PAGES YOU
NEED FROM YOUR PRINT MENU

In your print menu, under Size options, be sure to
select to print 'Actual Size', instead of 'Fit to Page'

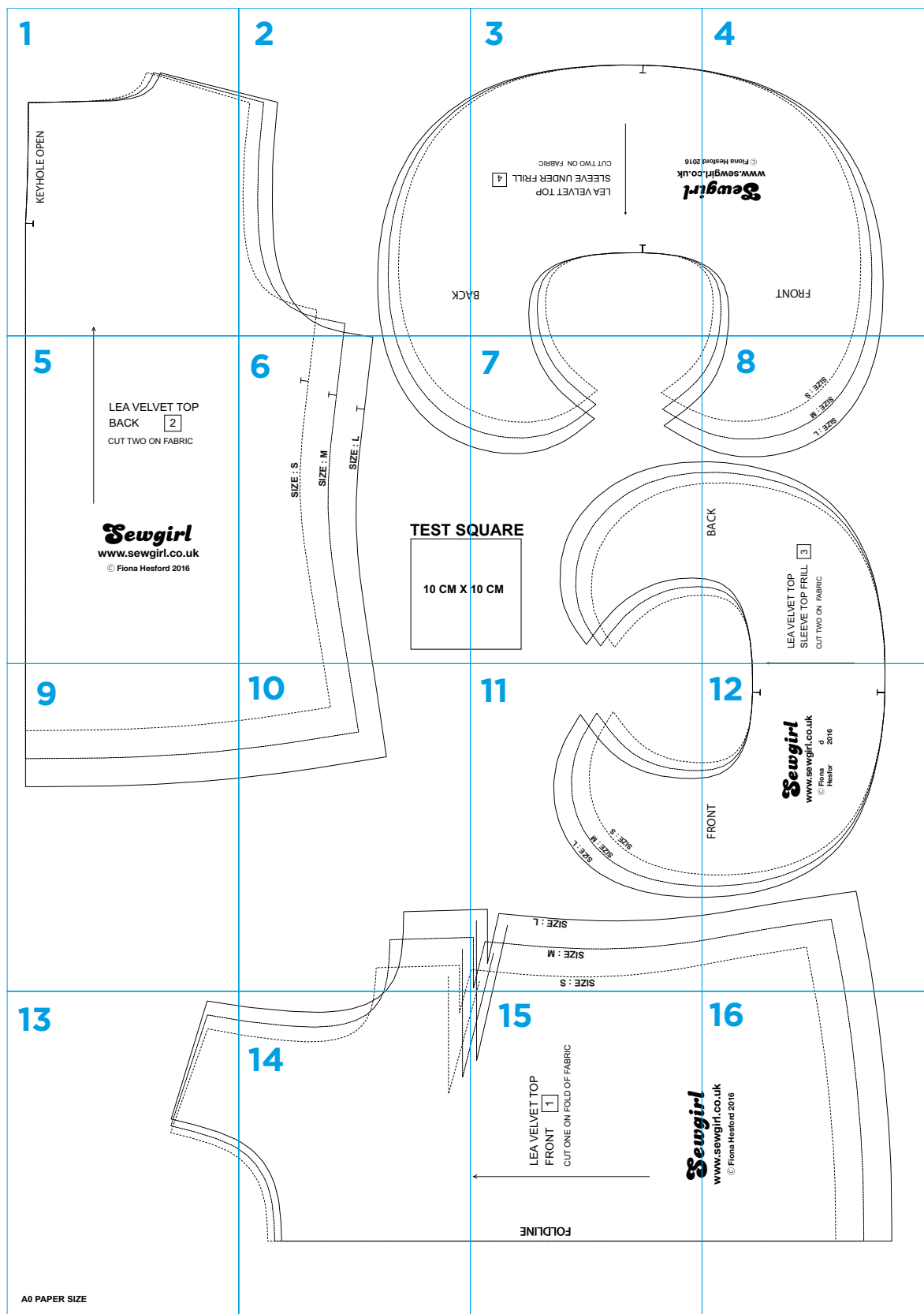
Title: Lea Top
Designer: Fiona Hesford
Magazine page: 41
Total 18 pages to print

© ACEVILLE PUBLICATIONS LTD | WWW.SEWMAG.CO.UK

All projects, templates and patterns are for personal home use only and cannot be sold or used for commercial purposes.

Title: Lea Top
Designer: Fiona Hesford
Magazine page: 41
Total 18 pages to print

UK SIZE GUIDE	8-10 (small)	12-14 (medium)	16-18 (large)
Bust (cm)	82-86	91-96	100-106
Waist (cm)	65-69	74-79	84-89
Hips (cm)	90-94	99-104	109-114

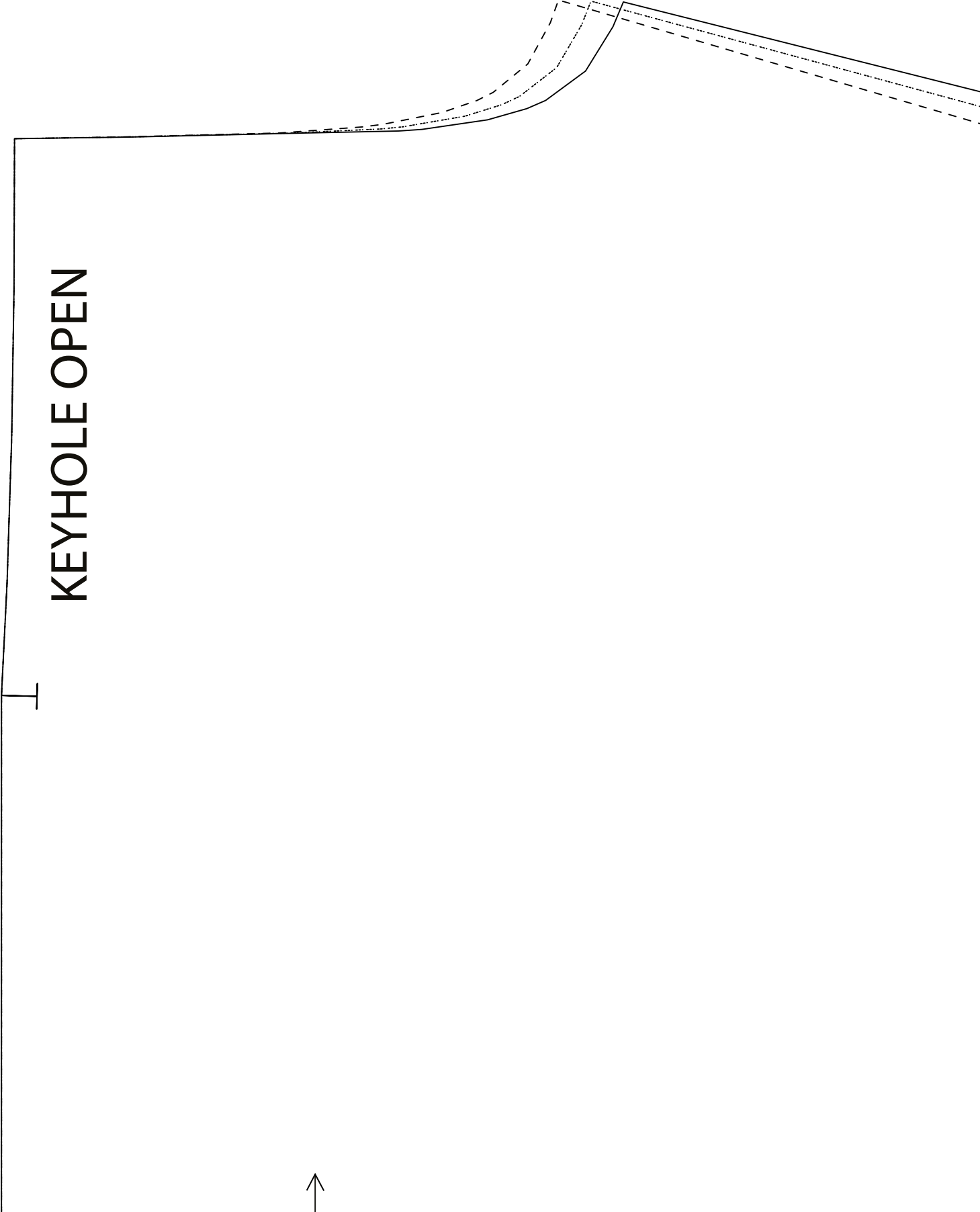


sew

www.sewmag.co.uk

1

KEYHOLE OPEN



2



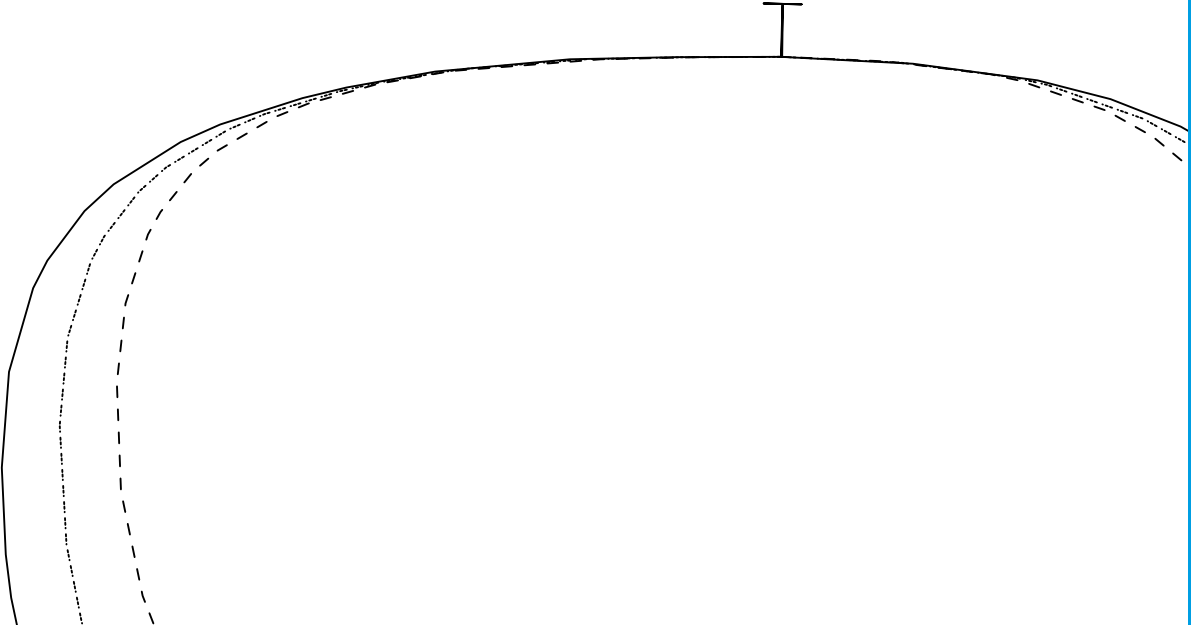
ACK

3



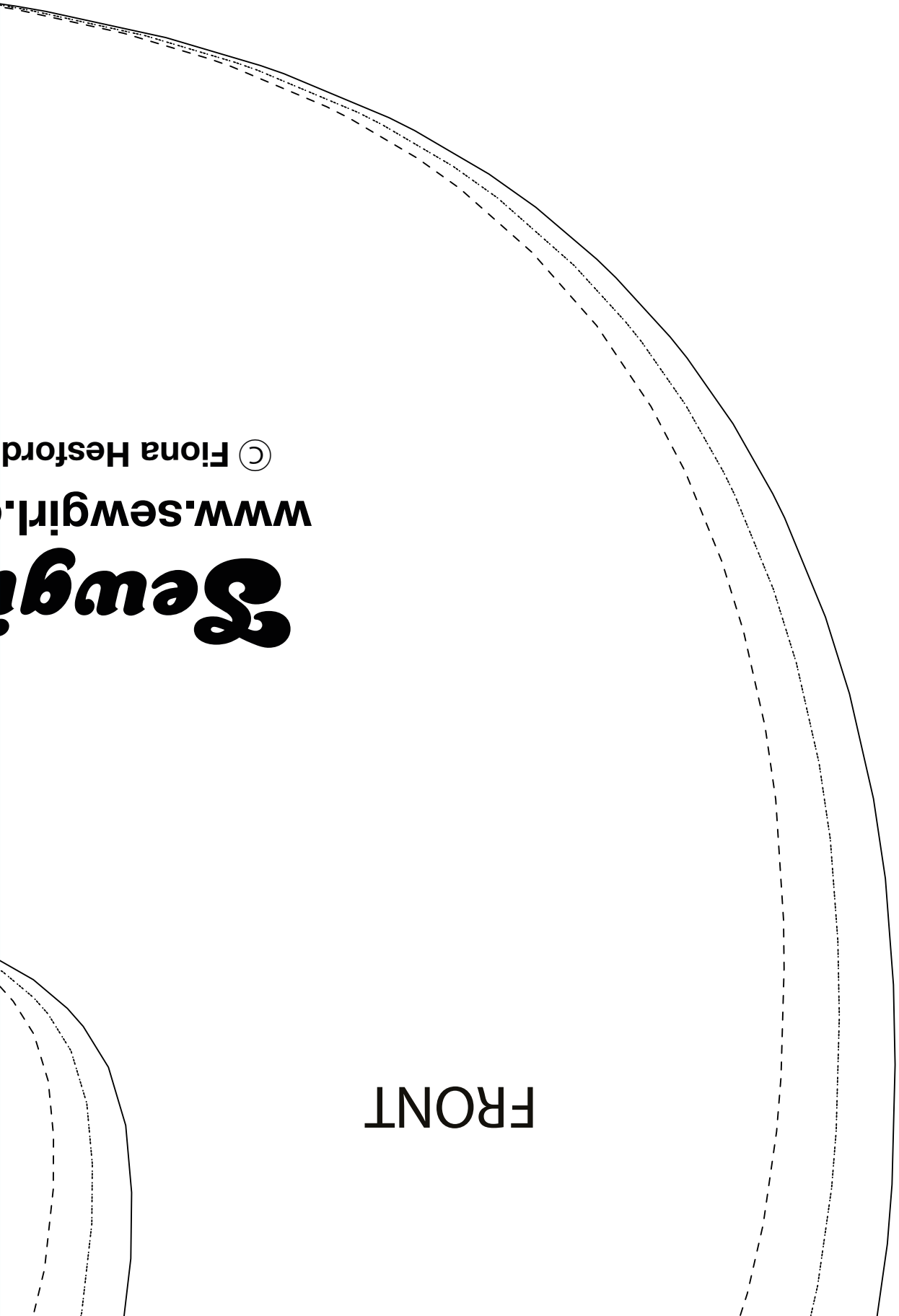
LEA VELVET TOP
SLEEVE UNDER FRILL
CUT TWO ON FABRIC

4



B/

4



Sewgirl
www.sewgirl.com © Fiona Hestford

FRONT

5

LEA VELVET TOP

BACK

2

CUT TWO ON FABRIC

Sewgirl

www.sewgirl.co.uk

© Fiona Hesford 2016

6

SIZE : S

SIZE : M

SIZE : L

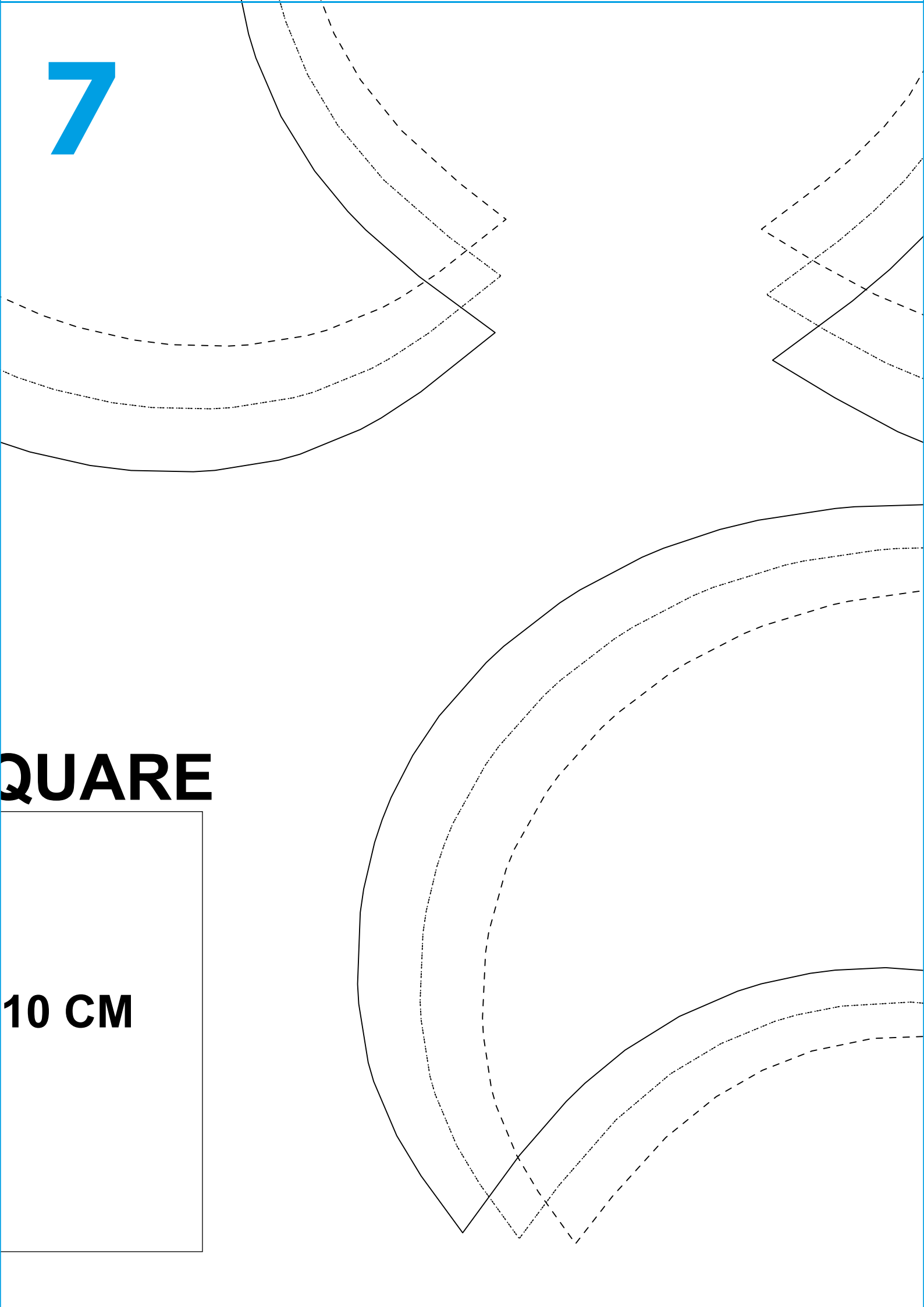
TEST SC

10 CM X

7

SQUARE

10 CM



8

SIZE : S

SIZE : M

SIZE : L

BACK

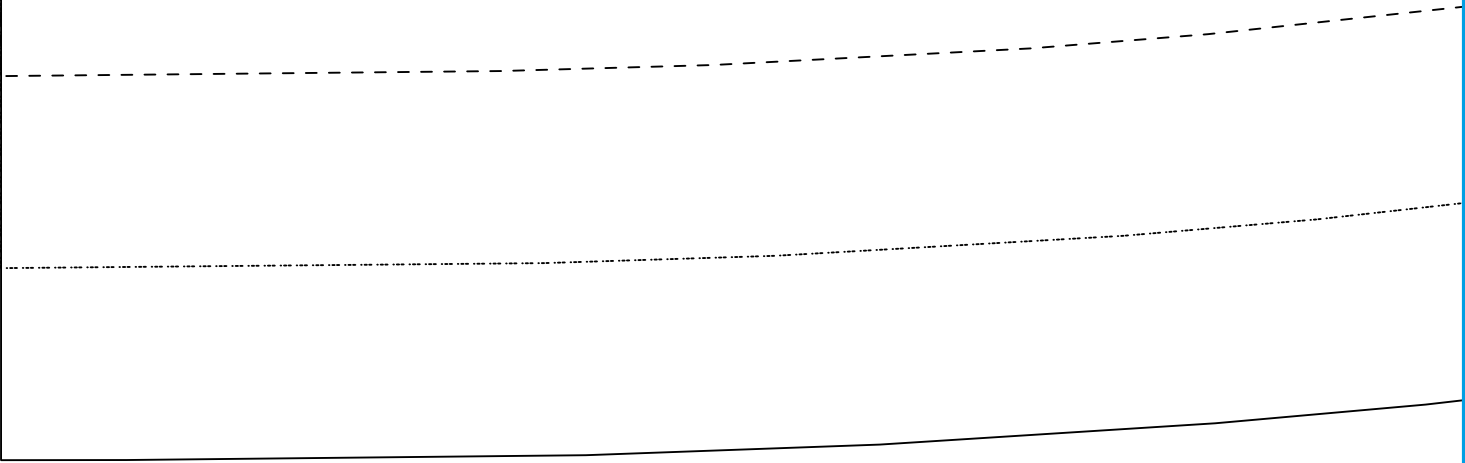
LEA VELVET TOP

SLEEVE TOP FRILL

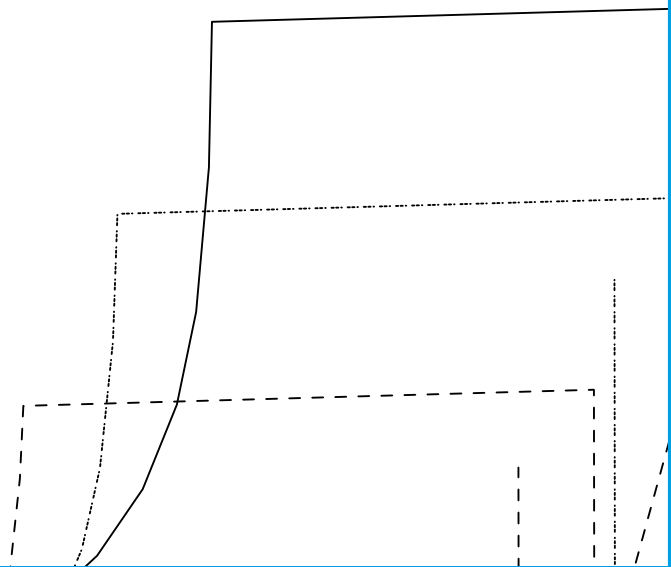
3

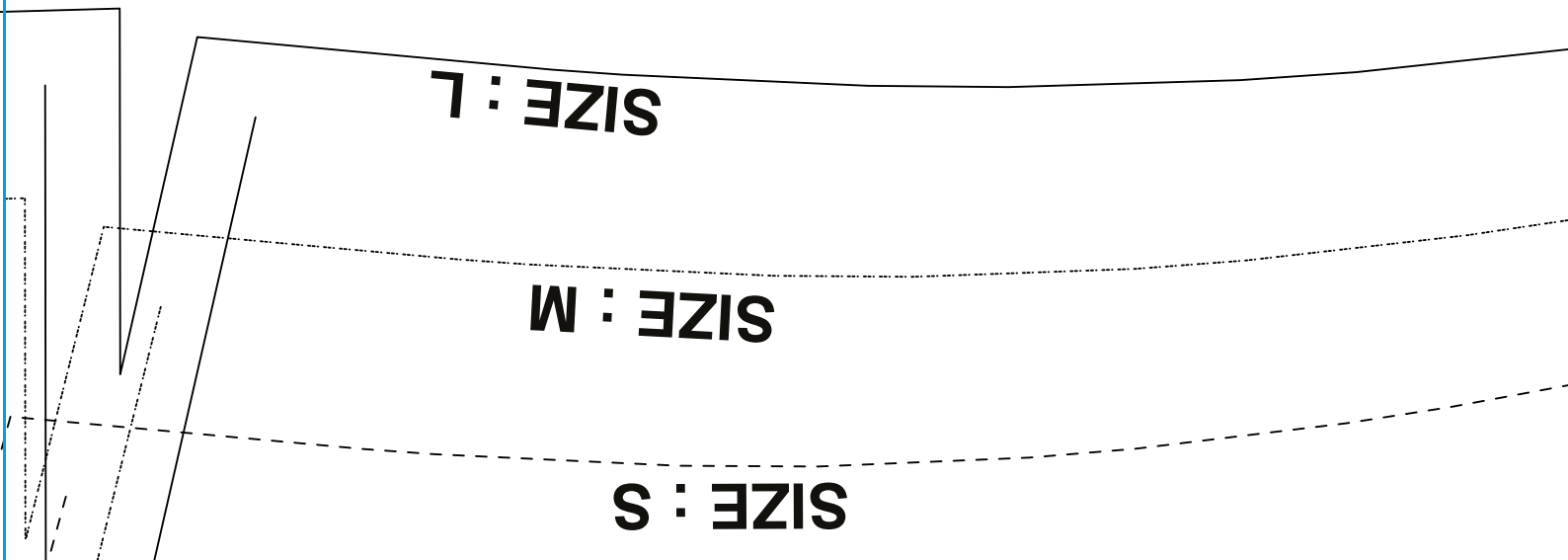
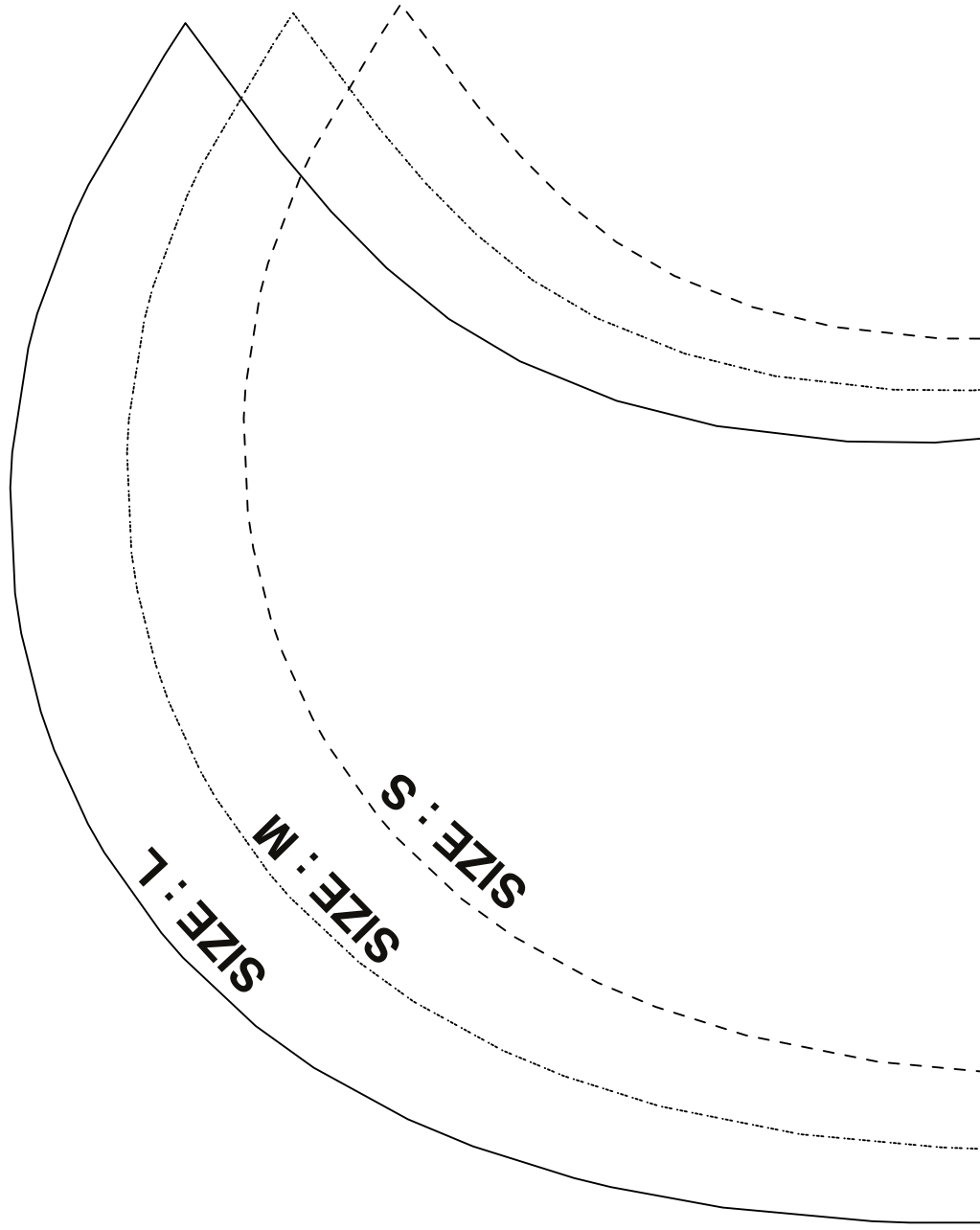
CUT TWO ON FABRIC

9



10





FRONT

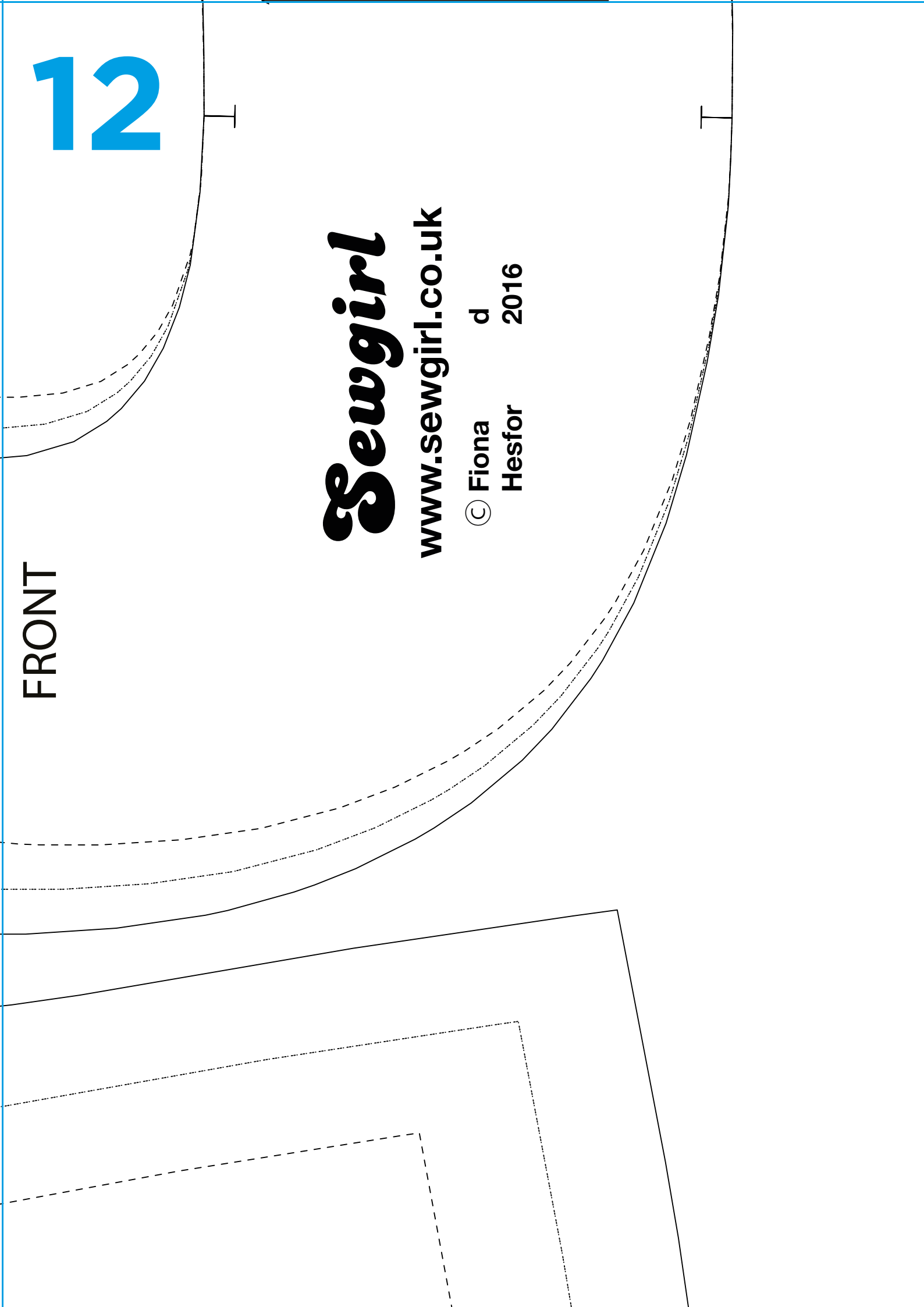
12

Sewgirl

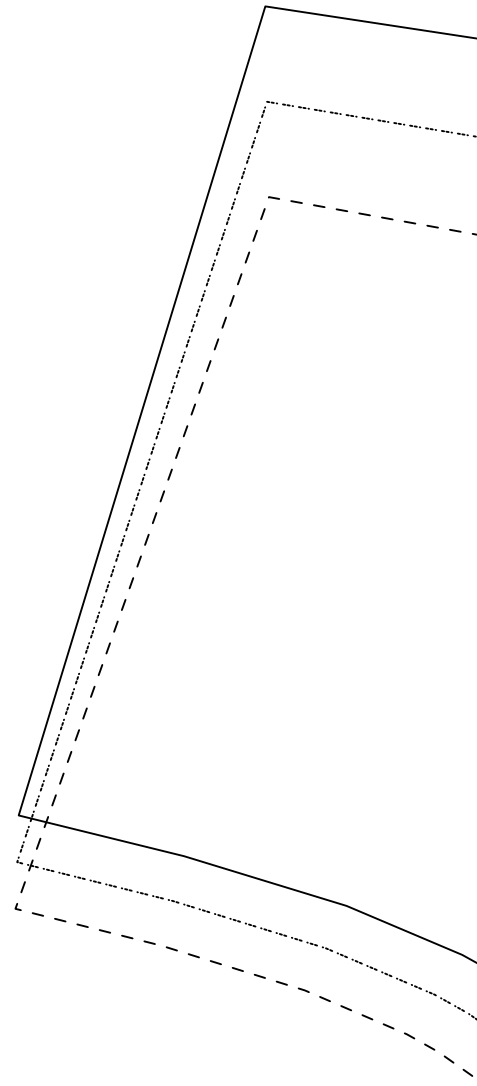
www.sewgirl.co.uk

© Fiona
Hesfor

d
2016



13



A0 PAPER SIZE

14

15

LEA VELVET TOP

FRONT

1

CUT ONE ON FOLD OF FABRIC

FOLDLINE

Sewair

