



## MIA SKIRT

JUST PRINT OUT THE PAGE OR PAGES YOU NEED FROM YOUR PRINT MENU

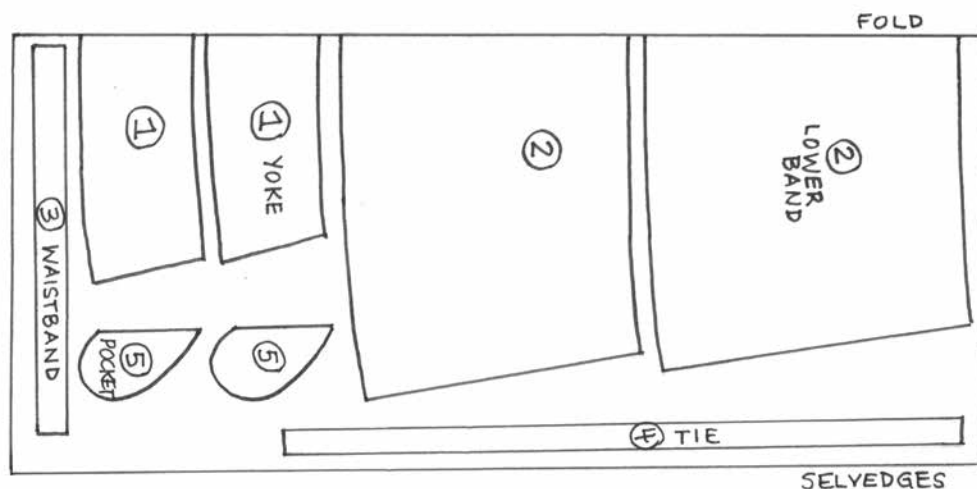
In your print menu, under Size options, be sure to select to print 'Actual Size', instead of 'Fit to Page'

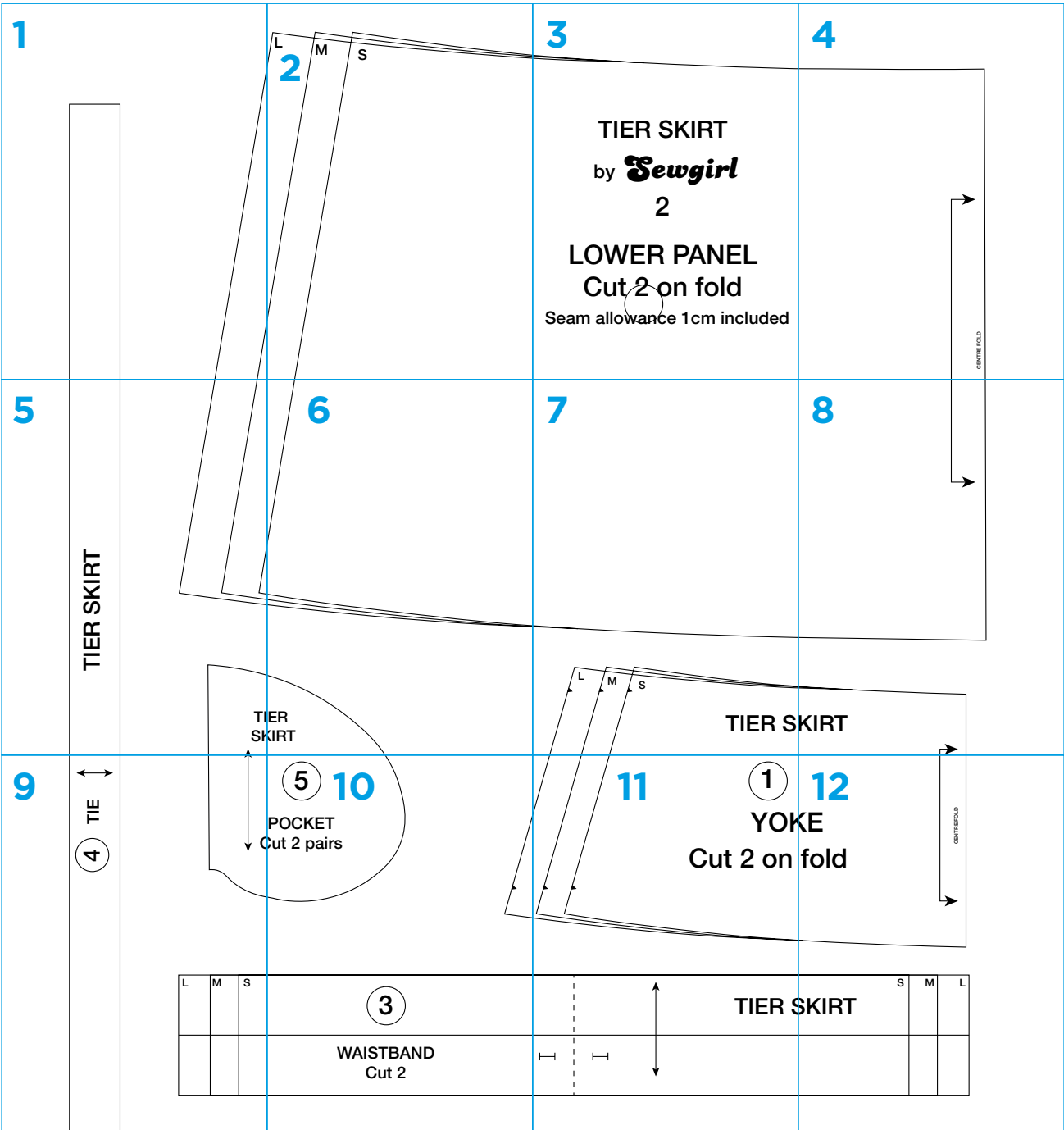
**Designer:** Fiona Hesford

**Magazine page:** 41

**Total 21 pages to print**

UK SIZE GUIDE	8-10 (small)	12-14 (Med)	16-18 (Large)
BUST inches/cm	32-34 (82-86)	36-38 (91-96)	40-42 (100-106)
WAIST inches/cm	26-27 (65-69)	29-31 (74-79)	33-35 (84-89)
HIPS inches/cm	35-37 (90-94)	35-37 (90-94)	39-41 (109-114)





1

2

3

4

TIER SKIRT  
by **Sewgirl**  
2

LOWER PANEL  
Cut 2 on fold

Seam allowance 1cm included

5

6

7

8

TIER SKIRT

TIER SKIRT

5 10

POCKET  
Cut 2 pairs

4

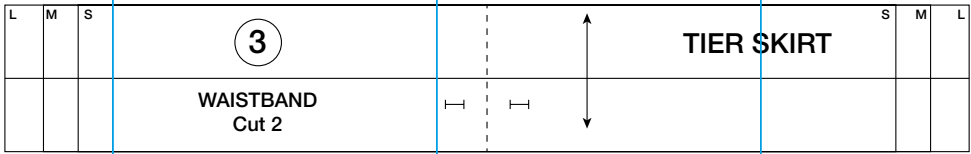
TIE

TIER SKIRT

11

1 12

YOKE  
Cut 2 on fold



13

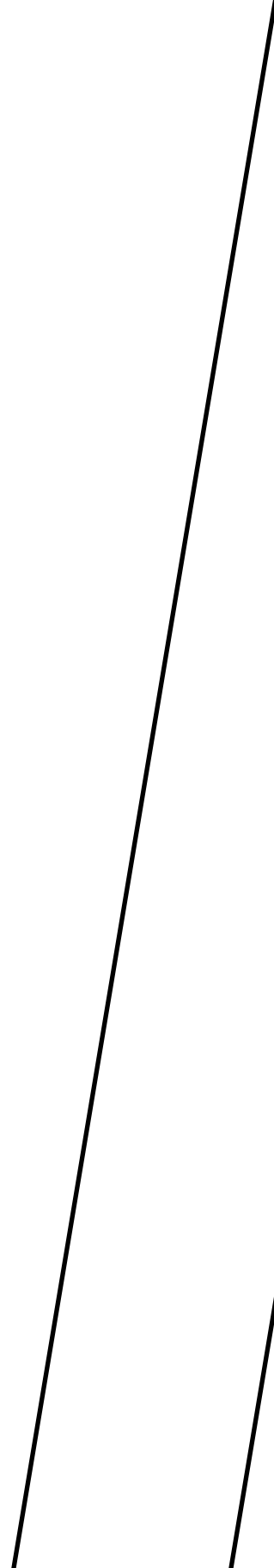
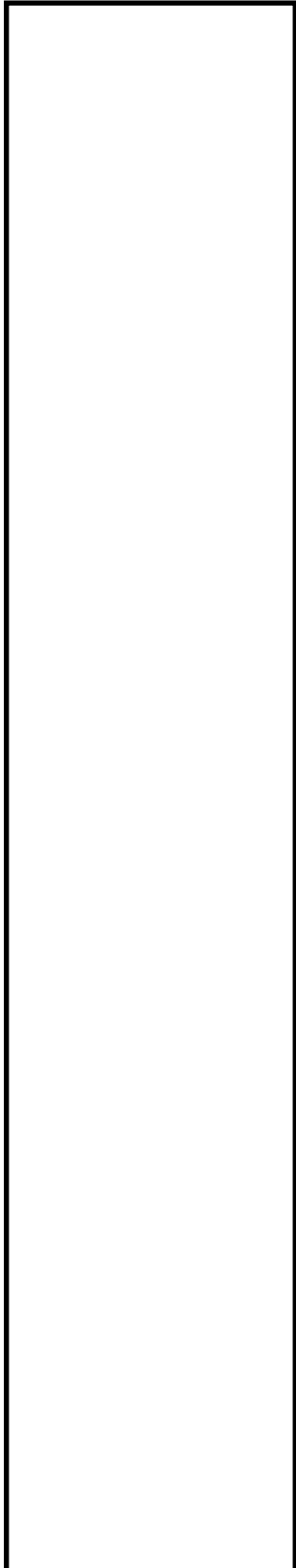
S

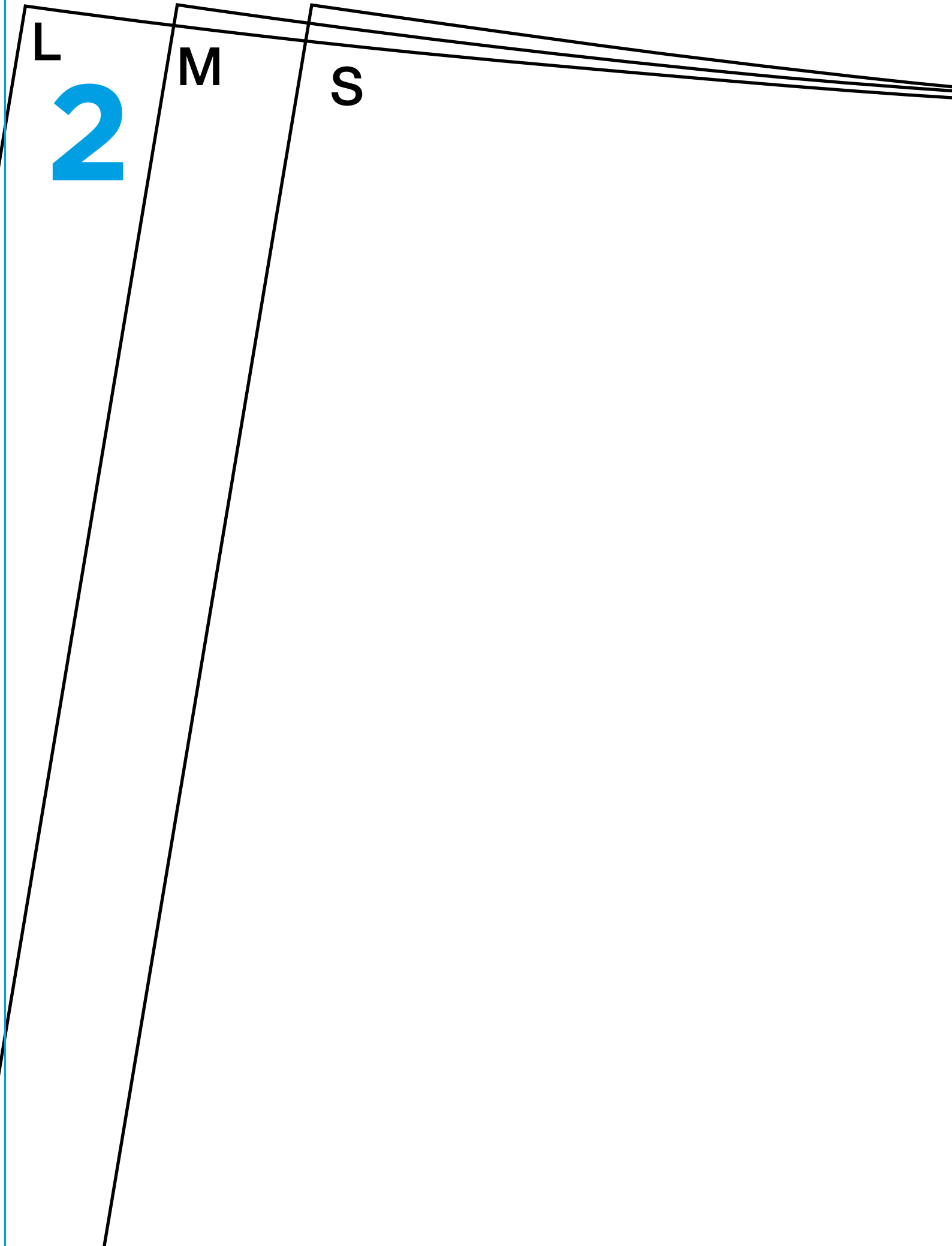
M

L

**Sewgirl**  
www.sewgirl.co.uk

1





L

2

M

S

**3**

# TIER SKIRT

by ***Sewgirl***

**2**

## LOWER PANEL

**Cut 2 on fold**

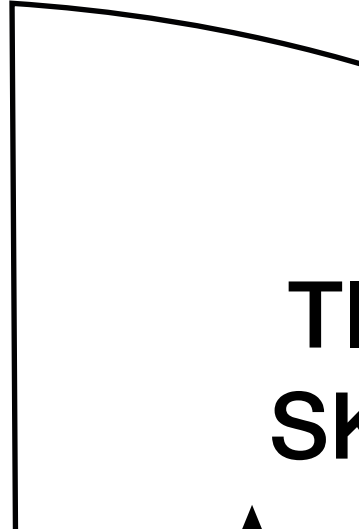
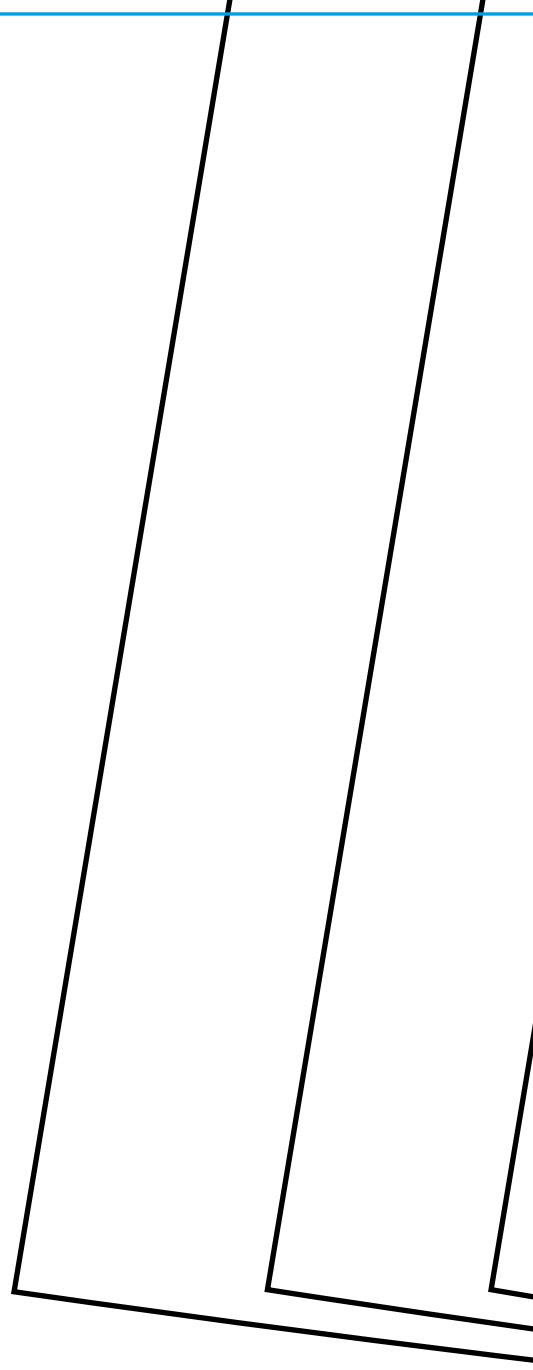
**Seam allowance 1cm included**

4



CENTRE FOLD

# TIER SKIRT



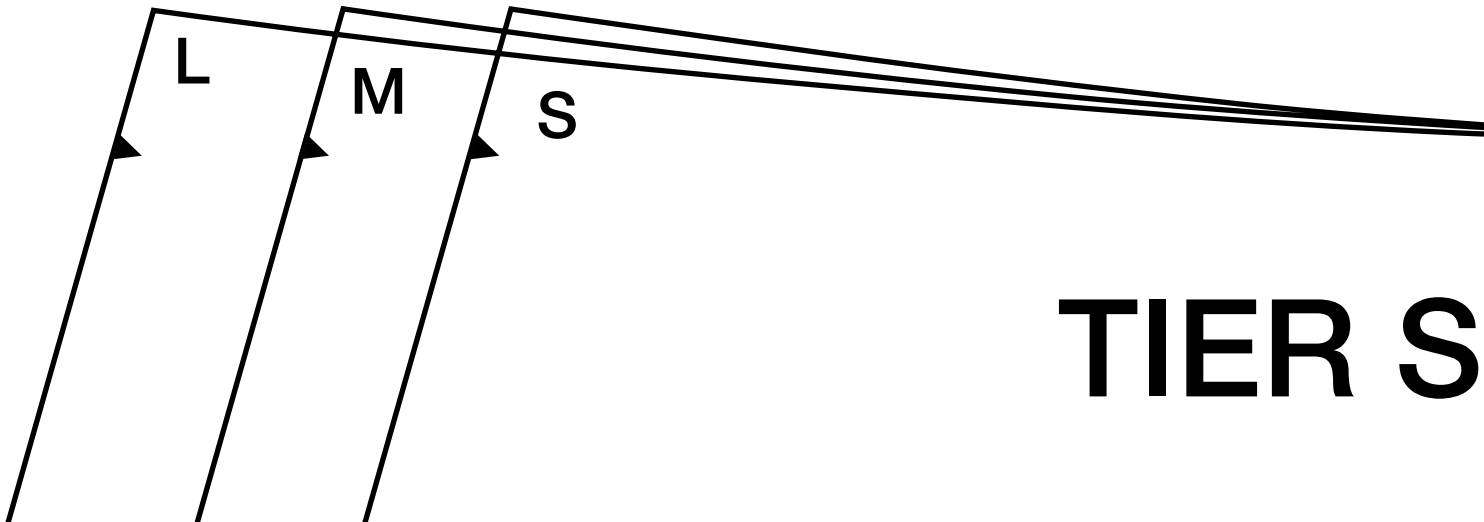
T  
SK

6

ER  
KIRT



7



**TIER S**

8



KIRT



9

4

TIE



L	M	S



**5**

**10**

**POCKET**  
Cut 2 pairs

**3**

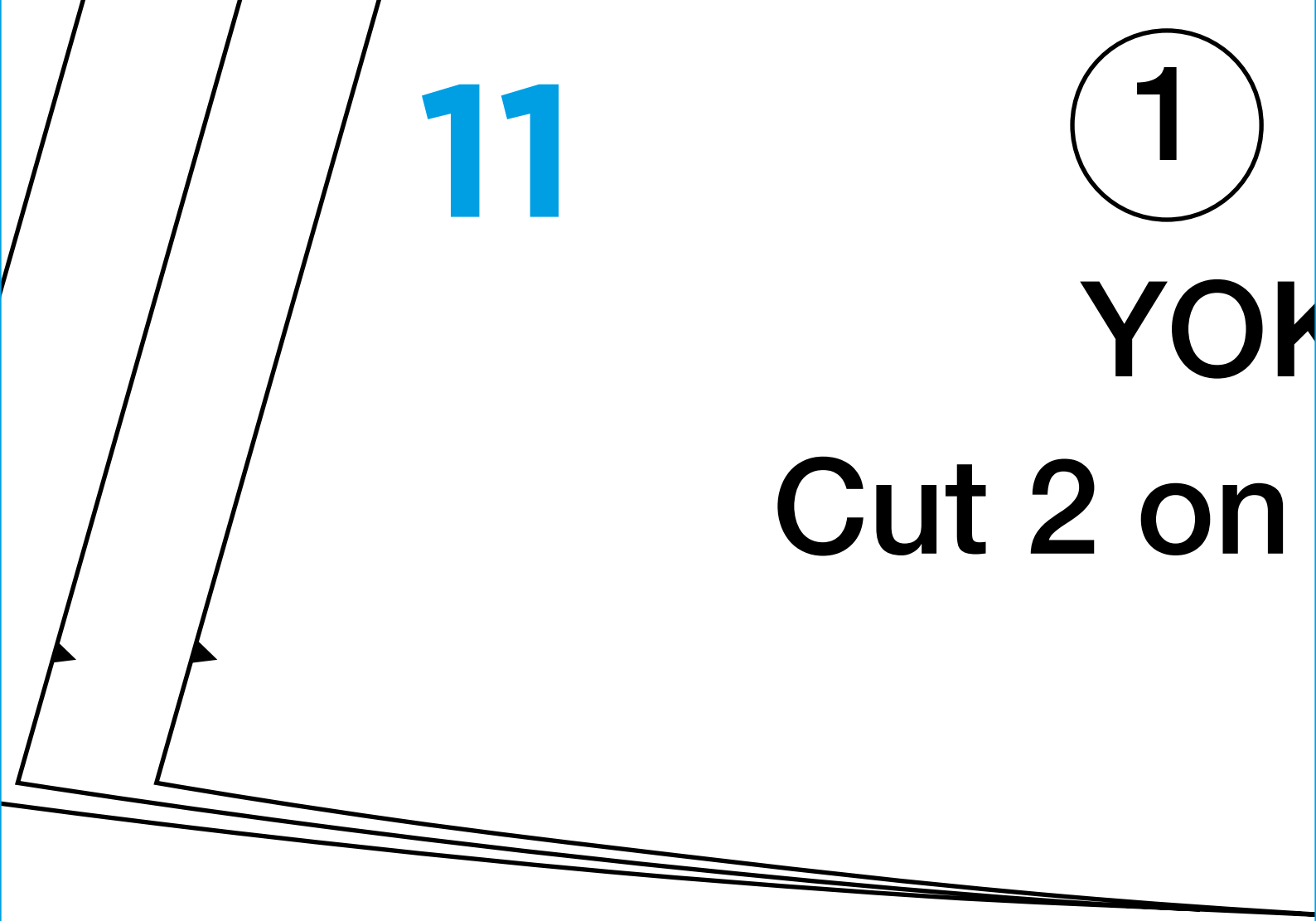
**WAISTBAND**  
Cut 2

**11**

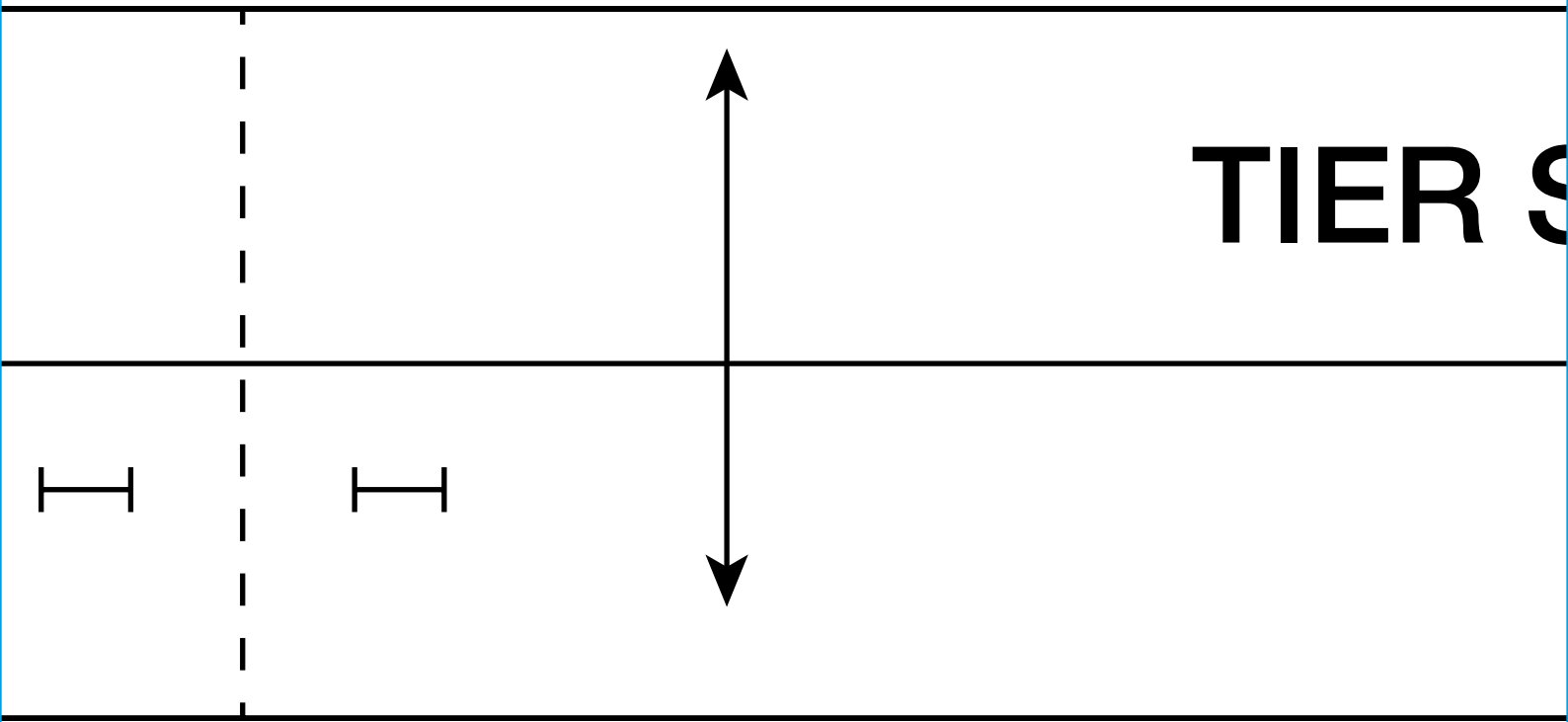
**1**

**YOK**

**Cut 2 on**



**TIER S**

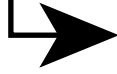


# 12

# KE

# fold

CENTRE FOLD



SKIRT	S	M	L

# 13

L	M	S
---	---	---