

**PRINT  
OUT  
& KEEP**

# PAULA SKIRT TEMPLATE

Use these guides to get started today

---

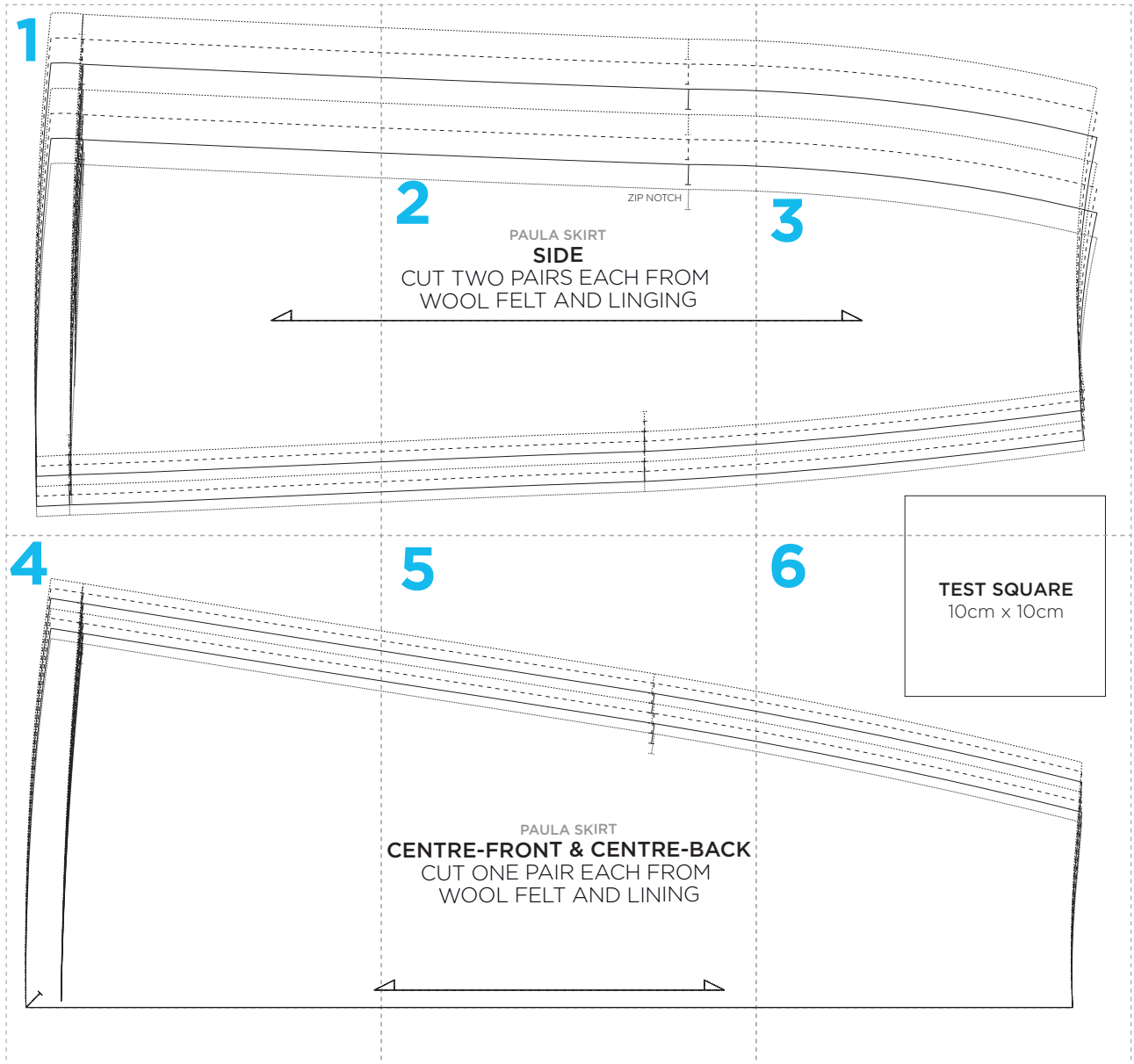
IN YOUR PRINT MENU, UNDER SIZE OPTIONS, BE SURE TO  
SELECT TO PRINT 'ACTUAL SIZE', INSTEAD OF 'FIT TO PAGE'

---

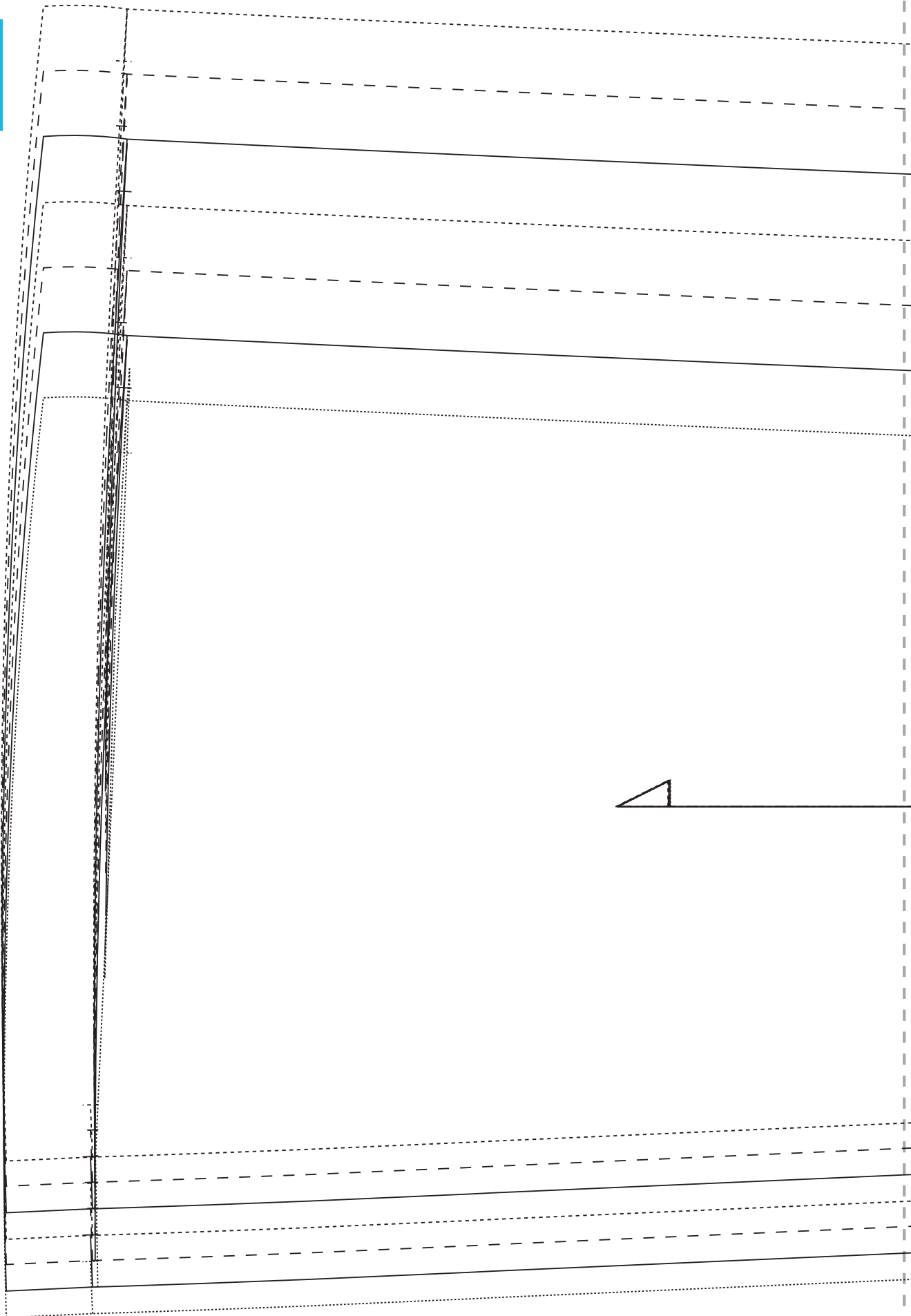
**Title:** Paula skirt  
**Designer:** Amanda Walker  
**Magazine page:** 34



## PAULA SKIRT PATTERN LAYOUT



1





The diagram shows two pieces of fabric for a skirt side. The top piece is a trapezoid with a curved top edge and a straight bottom edge. It has a vertical line on the right side with a notch at the bottom, labeled 'ZIP NOTCH'. The bottom piece is a trapezoid with a curved bottom edge and a straight top edge. It also has a vertical line on the right side with a notch at the top, labeled 'ZIP NOTCH'. The pieces are separated by a horizontal line.

2

ZIP NOTCH

PAULA SKIRT

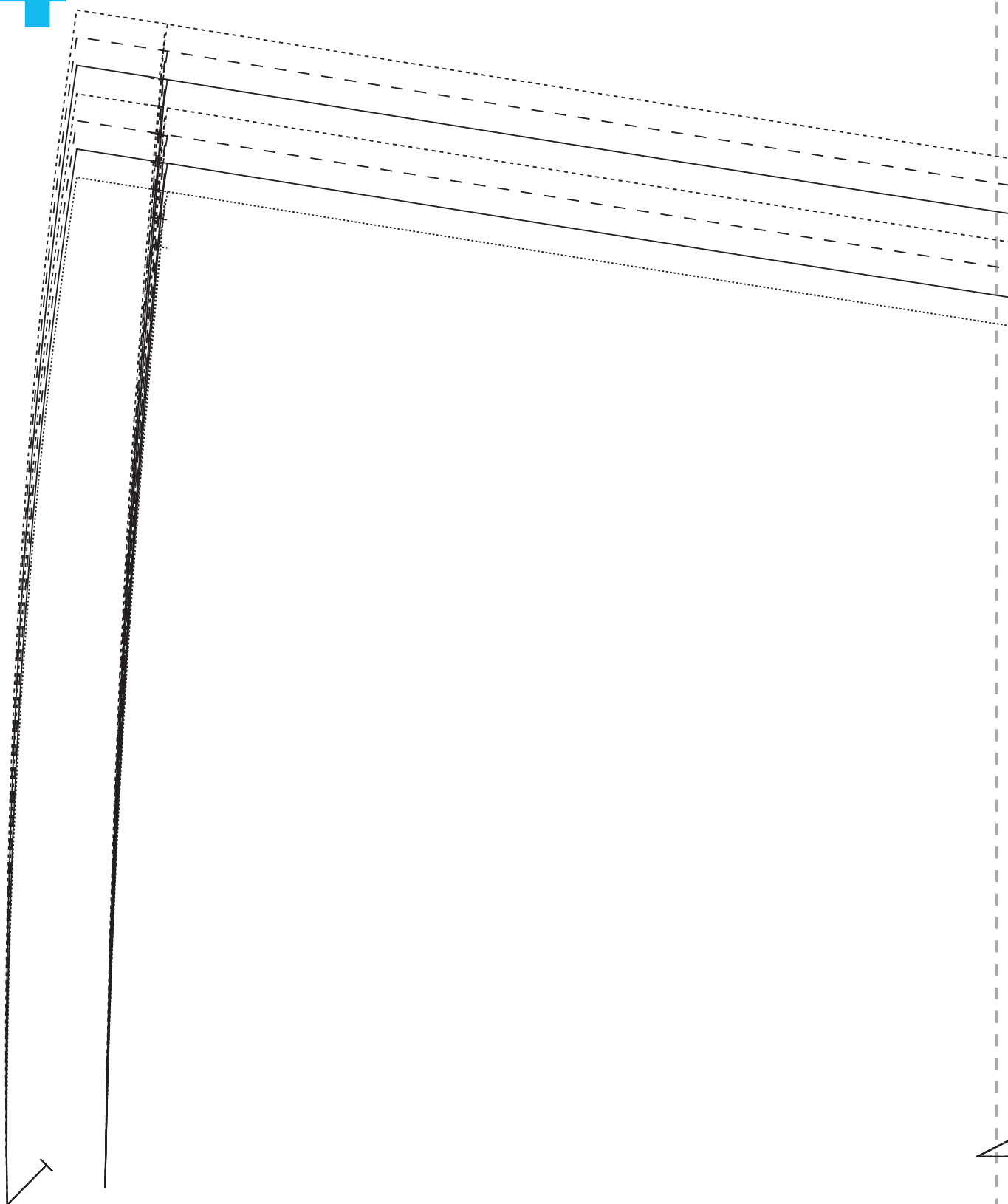
**SIDE**

CUT TWO PAIRS EACH FROM  
WOOL FELT AND LINGING

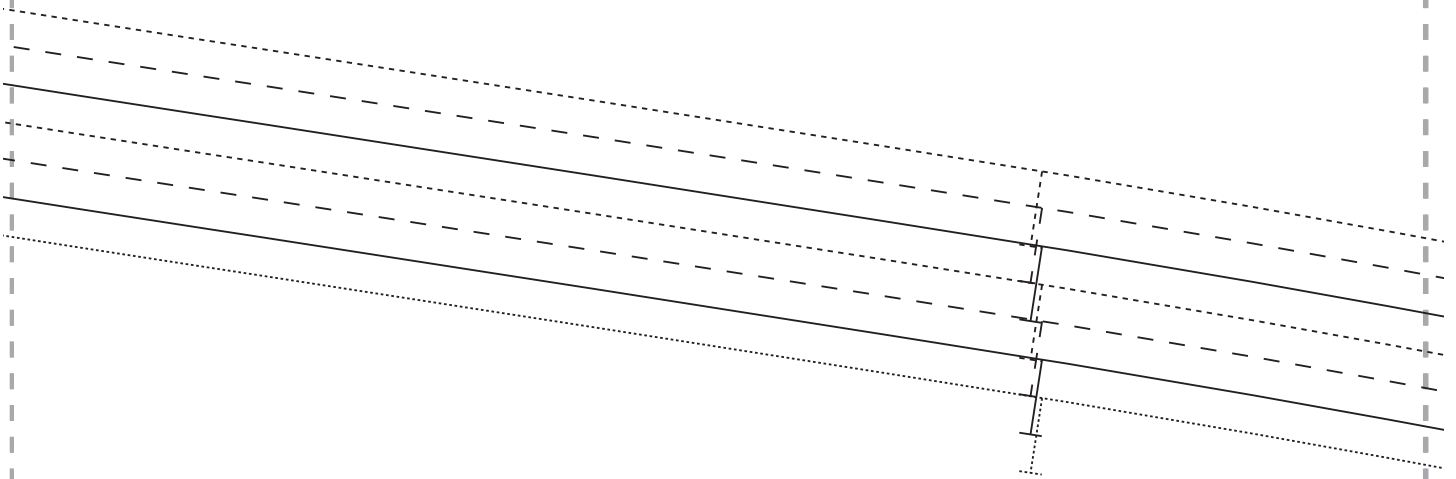
3



4



5



PAULA SKIRT

## **CENTRE-FRONT & CENTRE-BACK**

CUT ONE PAIR EACH FROM  
WOOL FELT AND LINING



6

# TEST SQUARE

10cm x 10cm

