

sew

Issue 97 May issue 2017

**PRINT
OUT
& KEEP**

PIPPA DRESS TEMPLATES

Use these guides to get started today

JUST PRINT OUT THE PAGE OR PAGES YOU
NEED FROM YOUR PRINT MENU

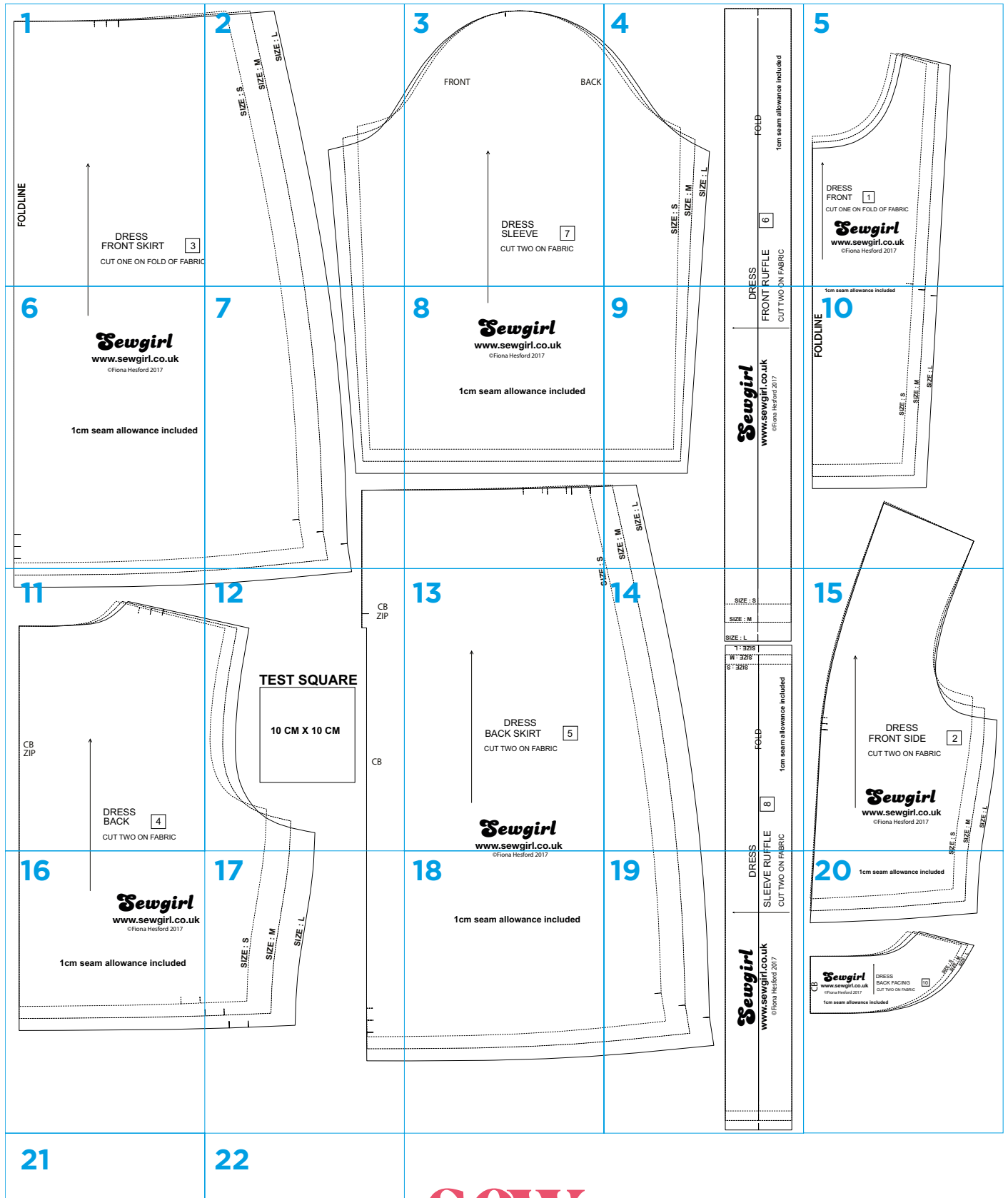
In your print menu, under Size options, be sure to
select to print 'Actual Size', instead of 'Fit to Page'

Title: Pippa Dress
Designer: Fiona Hesford
Magazine page: 39
Total 24 pages to print

© ACEVILLE PUBLICATIONS LTD | WWW.SEWMAG.CO.UK

All projects, templates and patterns are for personal home use only and cannot be sold or used for commercial purposes.

UK SIZE GUIDE	8-10 (small)	12-14 (medium)	16-18 (large)
Bust (cm)	82-86	91-96	100-106
Waist (cm)	65-69	74-79	84-89
Hips (cm)	90-94	99-104	109-114



1

FOLDLINE



DRESS
FRONT SKIRT

3

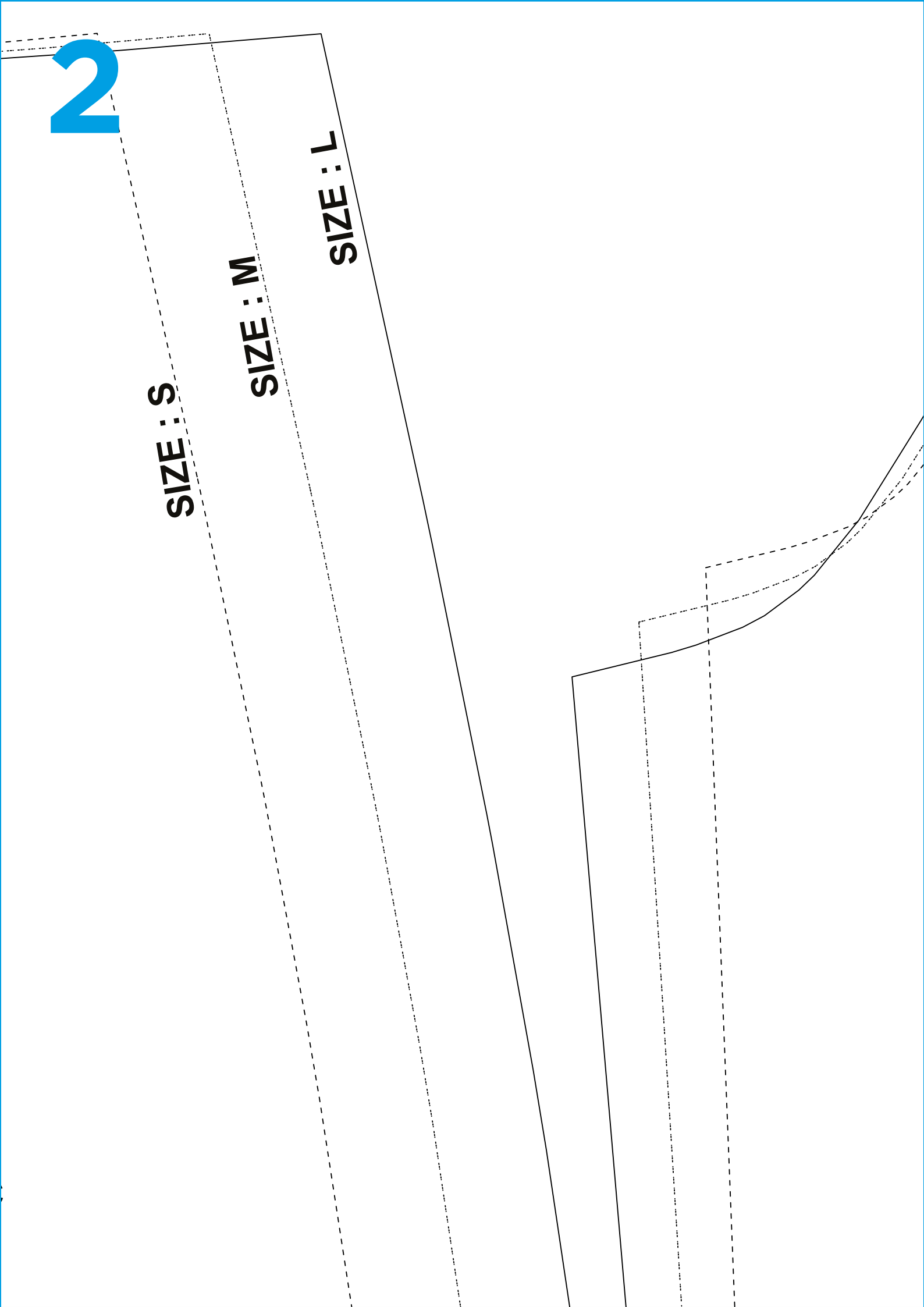
CUT ONE ON FOLD OF FABRIC

2

SIZE : S

SIZE : M

SIZE : L



3

FRONT

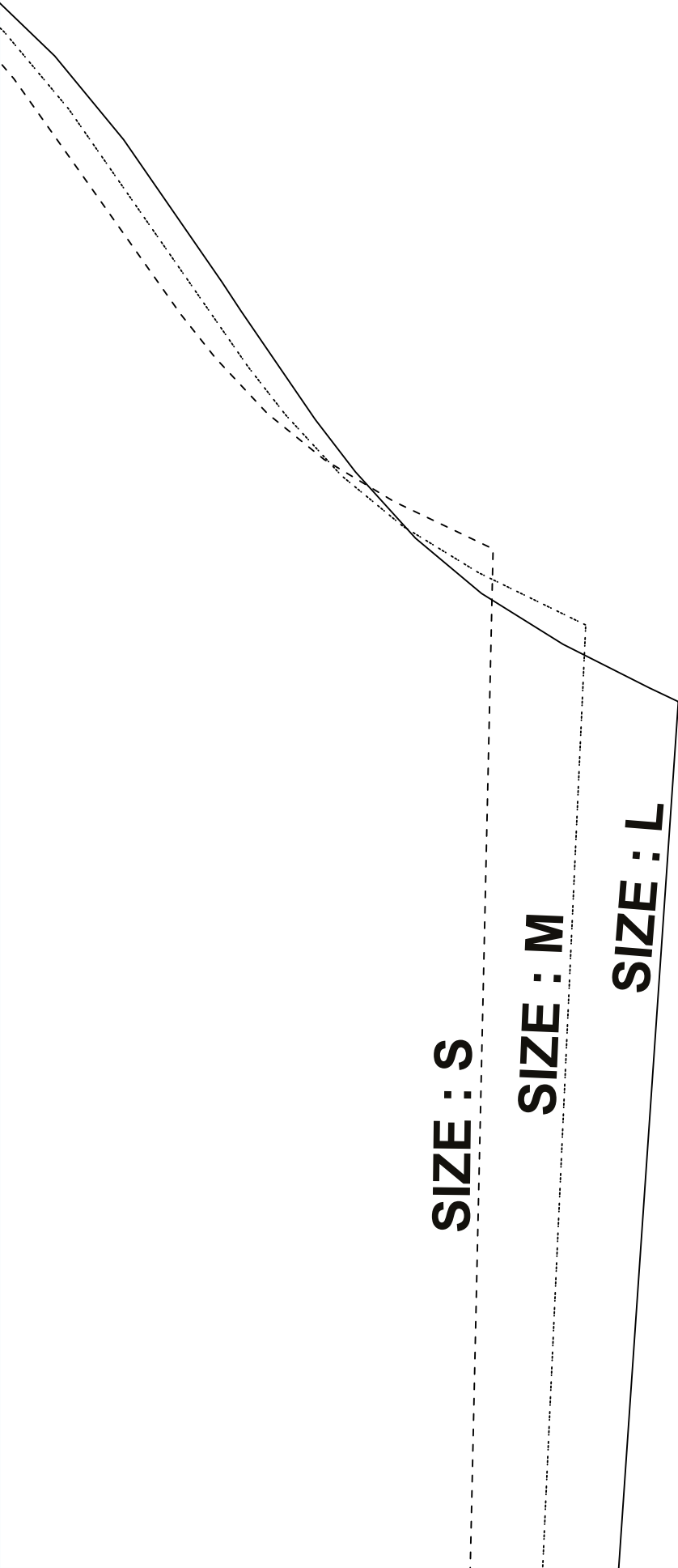
BACK

DRESS
SLEEVE

7

CUT TWO ON FABRIC

4



SIZE : S

SIZE : M

SIZE : L

ESS

RUFFLE

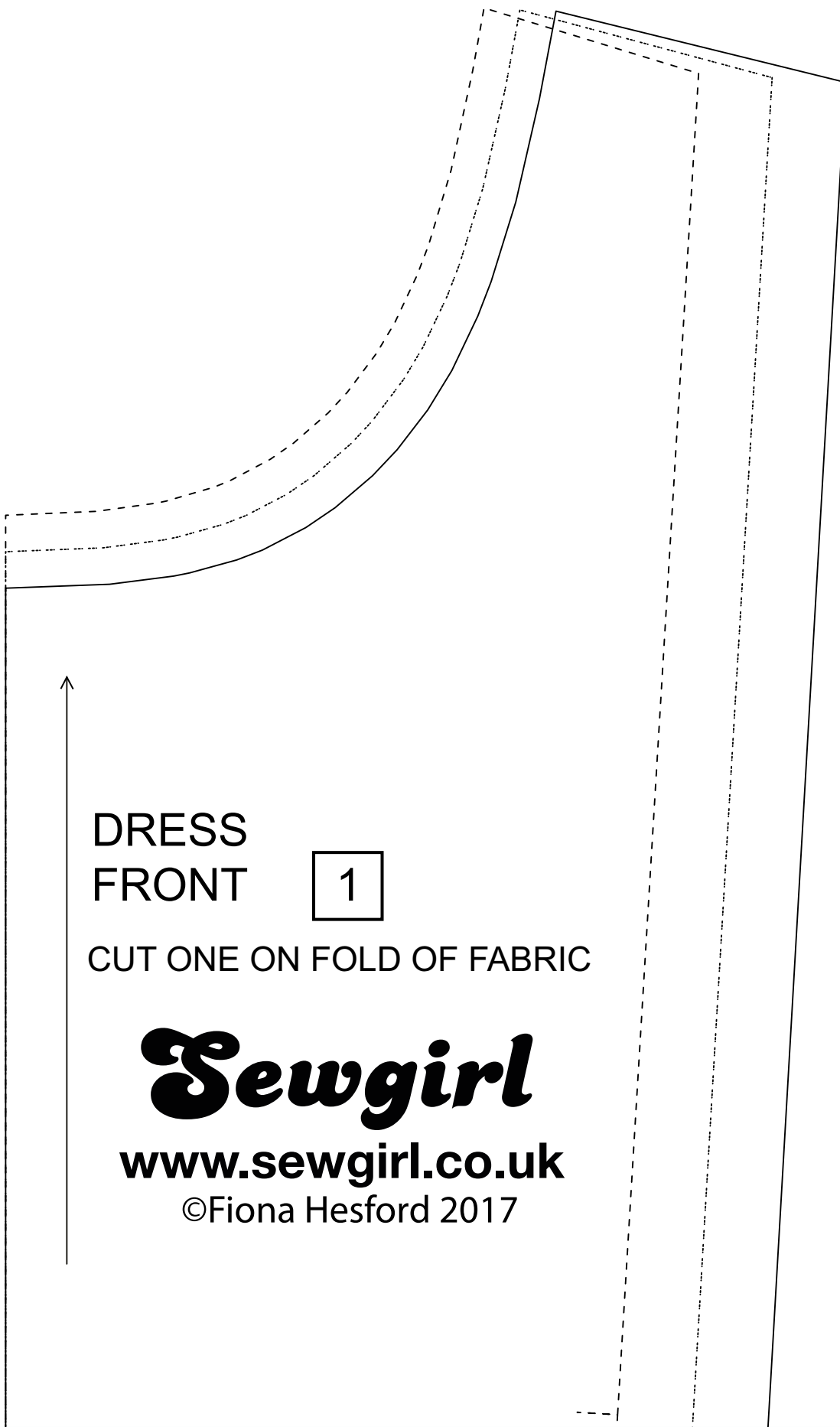
6

ON FABRIC

FOLD

1cm seam allowance included

5



DRESS
FRONT

1

CUT ONE ON FOLD OF FABRIC

Sewgirl

www.sewgirl.co.uk

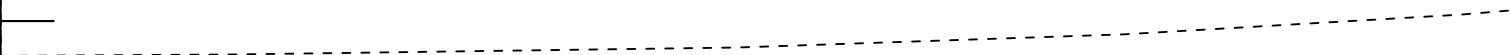
©Fiona Hesford 2017

6

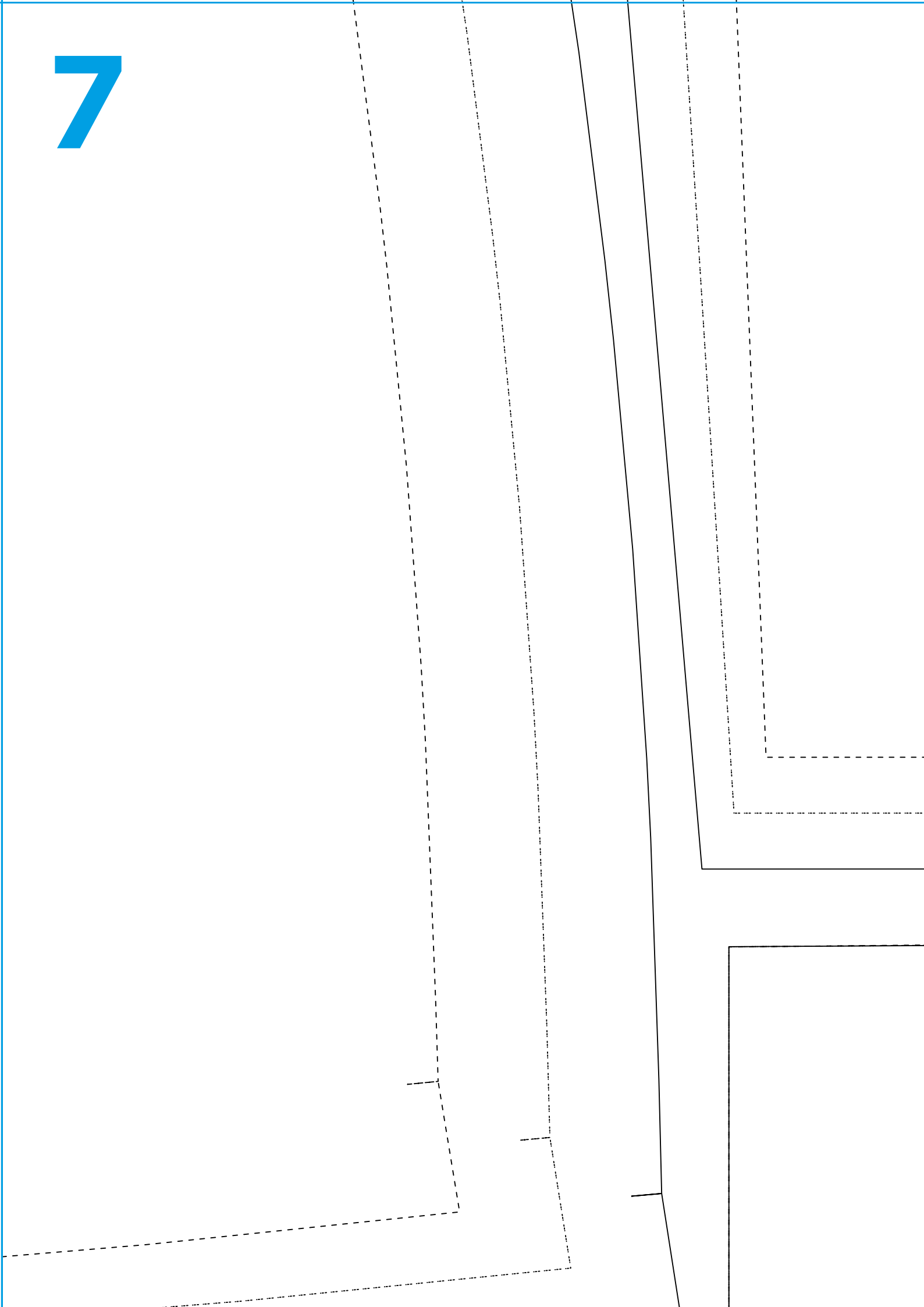
Sewgirl
www.sewgirl.co.uk

©Fiona Hesford 2017

1cm seam allowance included



7



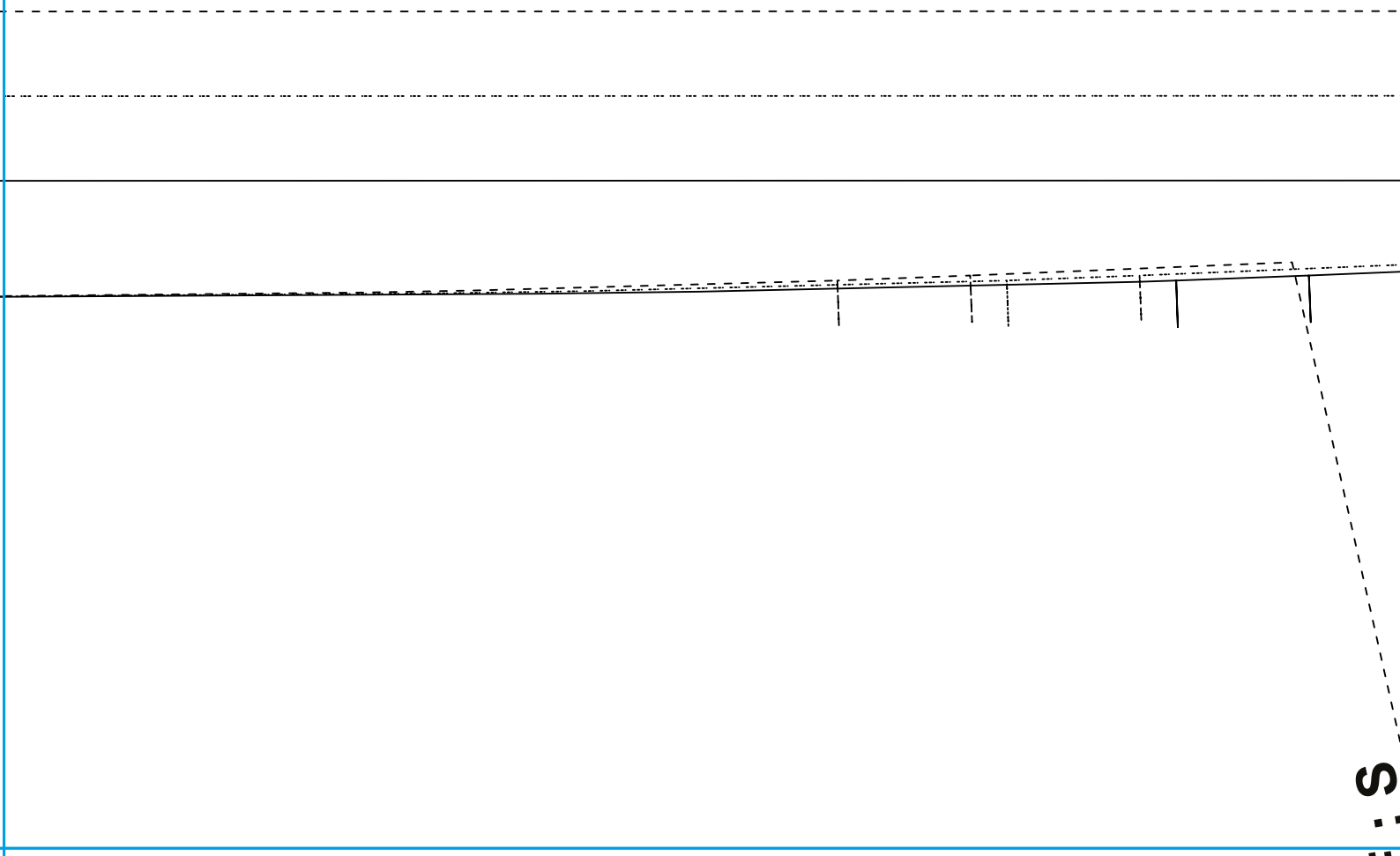
8

Sewgirl

www.sewgirl.co.uk

©Fiona Hesford 2017

1cm seam allowance included



S

9

SIZE : M

SIZE : L

Sewgirl

www.sewgirl.co.uk

©Fiona Hesford 2017

DR

FRONT

CUT TWO

1cm seam allowance included

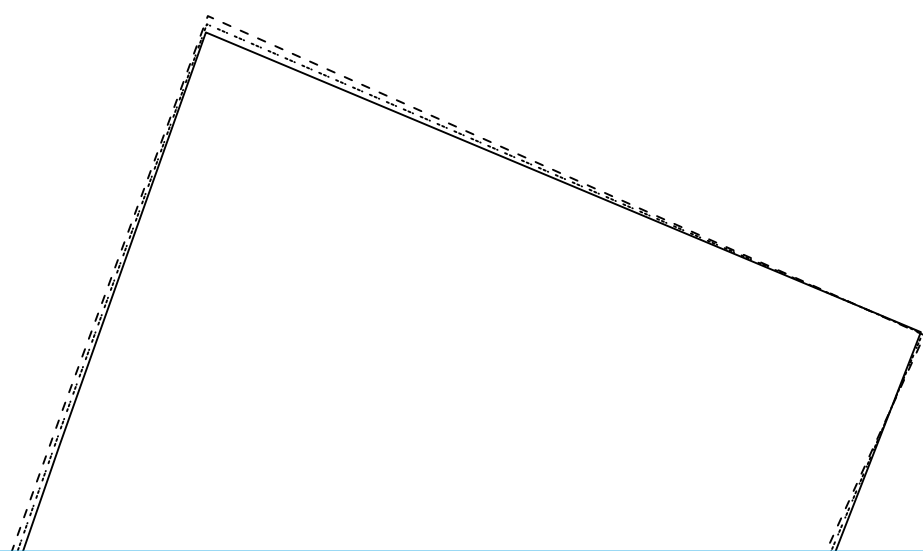
FOLDLINE

10

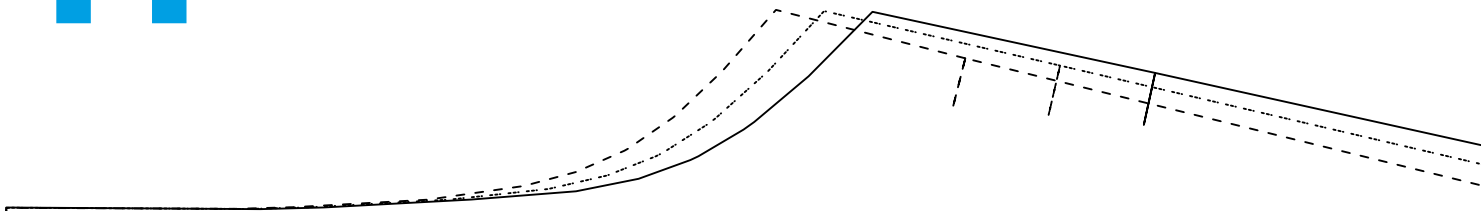
SIZE : S

SIZE : M

SIZE : L



11



CB
ZIP



DRESS
BACK

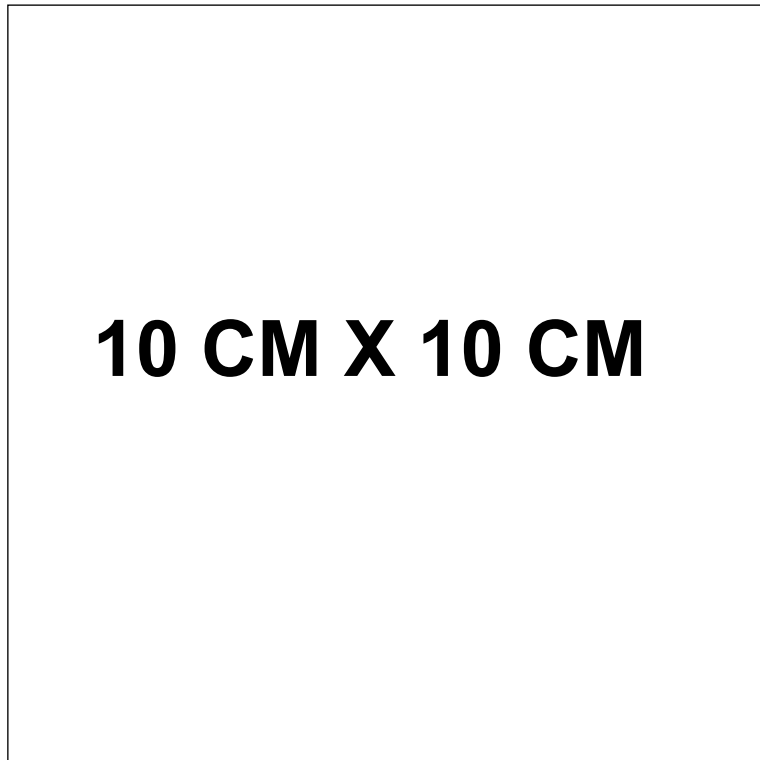
4

CUT TWO ON FABRIC

12

CB
ZIP

TEST SQUARE



10 CM X 10 CM

CB

13

SIZE



DRESS
BACK SKIRT

5

CUT TWO ON FABRIC

SIZE :

14

SIZE : S

SIZE : M

SIZE : L

SIZE : L

SIZE : M

SIZE : S

FOLD

8

1cm seam allowance included

S

FLE

BRIC

15

DRESS
FRONT SIDE

2

CUT TWO ON FABRIC

Sewgirl

www.sewgirl.co.uk

©Fiona Hesford 2017

SIZE : S

SIZE : M

SIZE : L

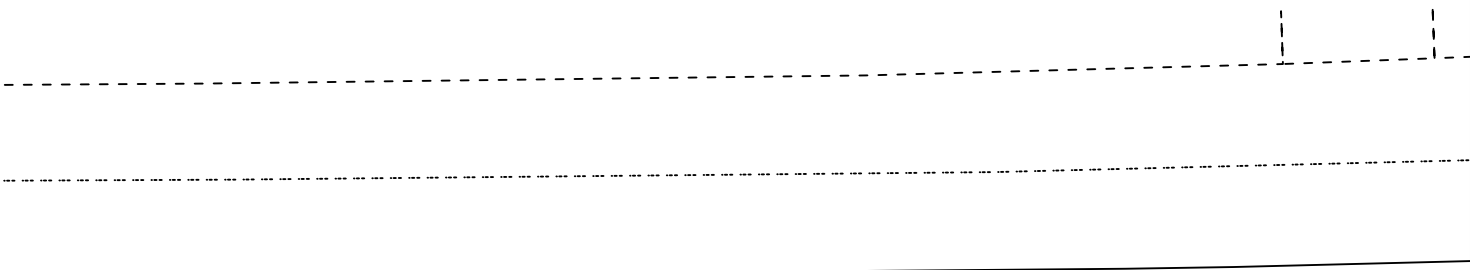
16

Sewgirl

www.sewgirl.co.uk

©Fiona Hesford 2017

1cm seam allowance included

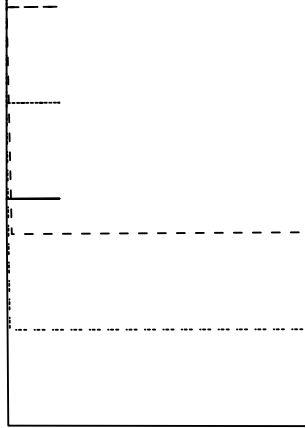


17

SIZE : S

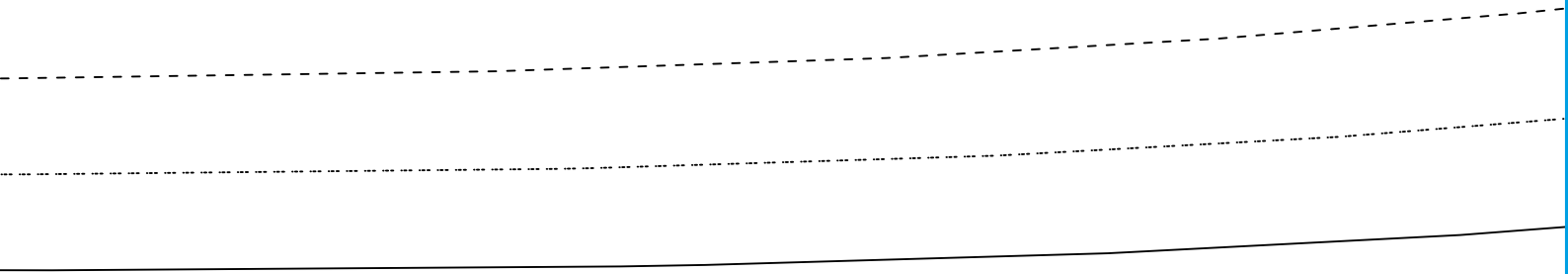
SIZE : M

SIZE : L

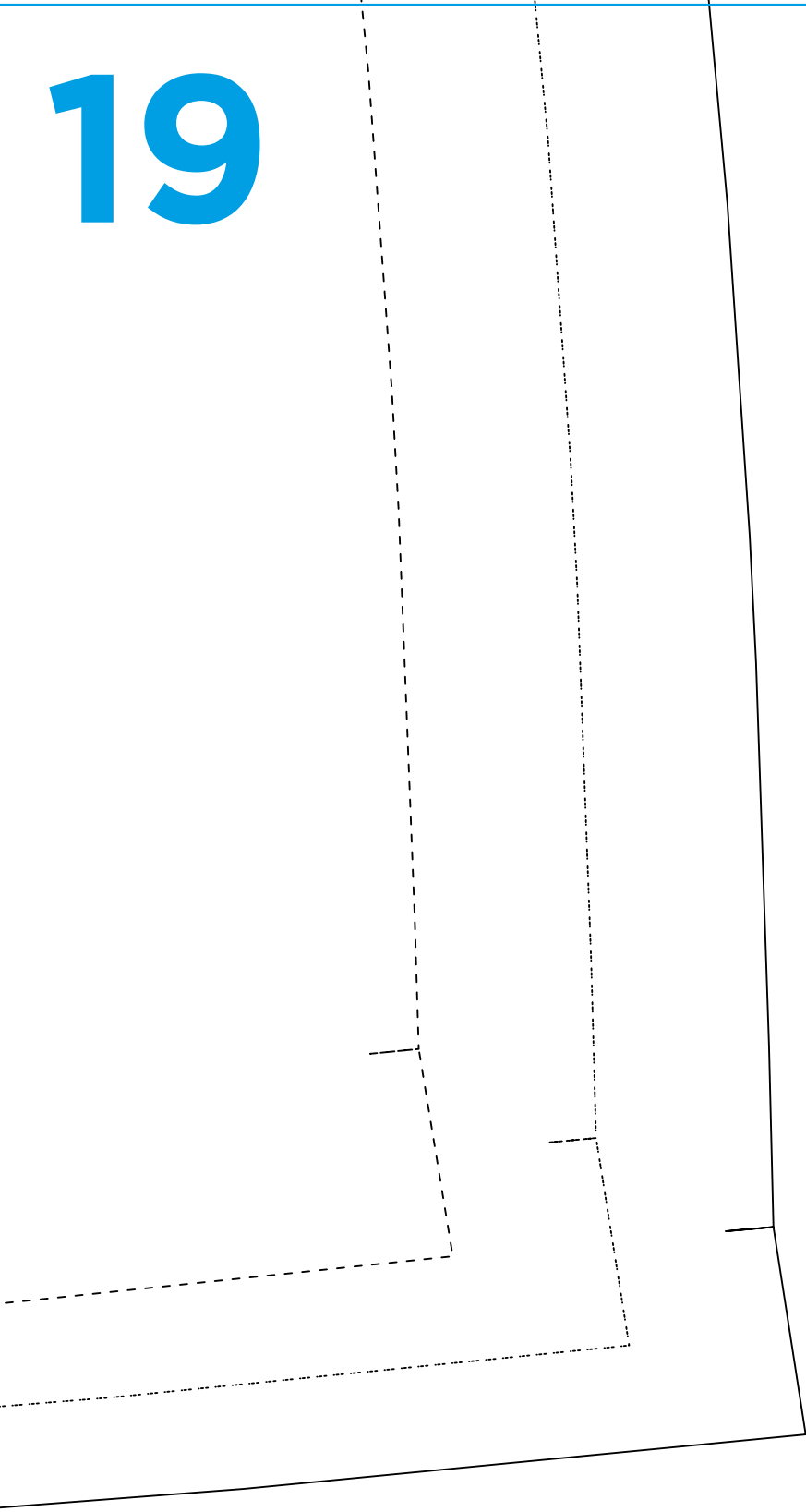


18

1cm seam allowance included



19



Sewgirl

www.sewgirl.co.uk

©Fiona Hesford 2017

DRES

SLEEVE RUF

CUT TWO ON FA

20

1cm seam allowance included

S

CB

Sewgirl

www.sewgirl.co.uk

©Fiona Hesford 2017

DRESS
BACK FACING
CUT TWO ON FABRIC

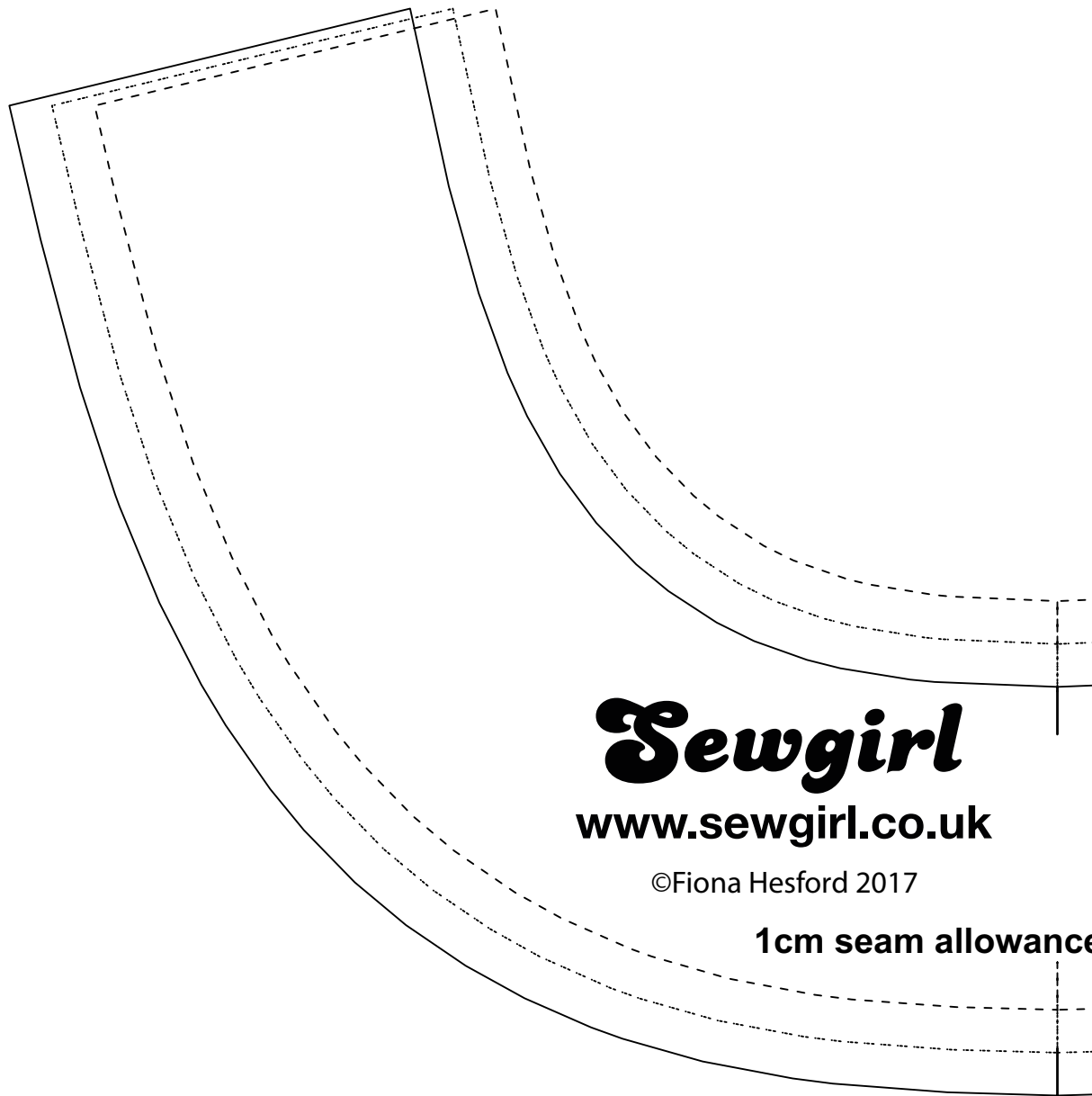
10

1cm seam allowance included

SIZE: S

SIZE: M

SIZE: L



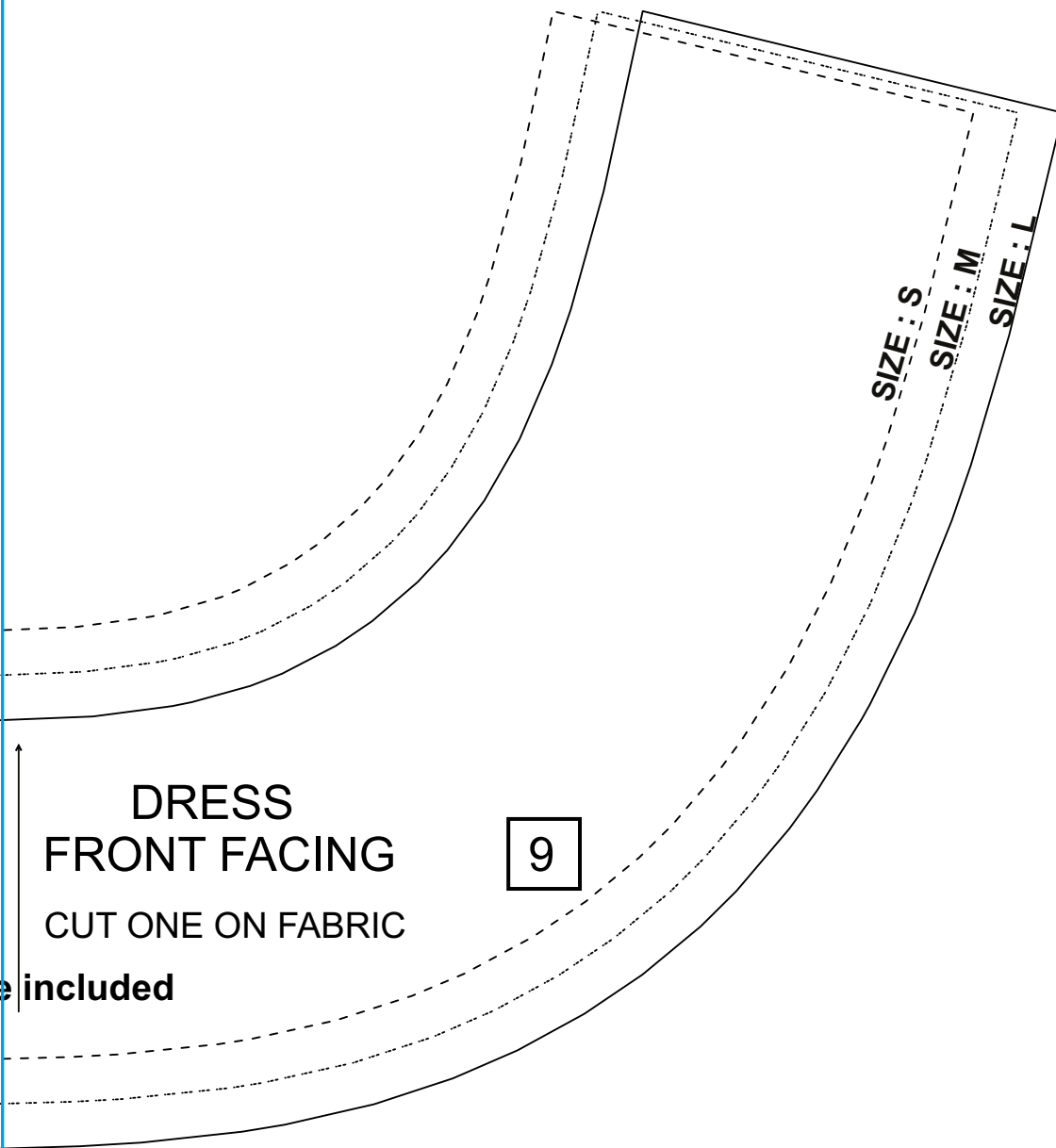
Sewgirl

www.sewgirl.co.uk

©Fiona Hesford 2017

1cm seam allowance

22



DRESS
FRONT FACING
CUT ONE ON FABRIC

9

SIZE : S
SIZE : M
SIZE : L

e included

