

sew

ISSUE 148 APRIL 2021

PATTERN DOWNLOAD

CUT OUT & KEEP

ROSIE DRESS

Designer: Posner & Posner

Magazine page: 17



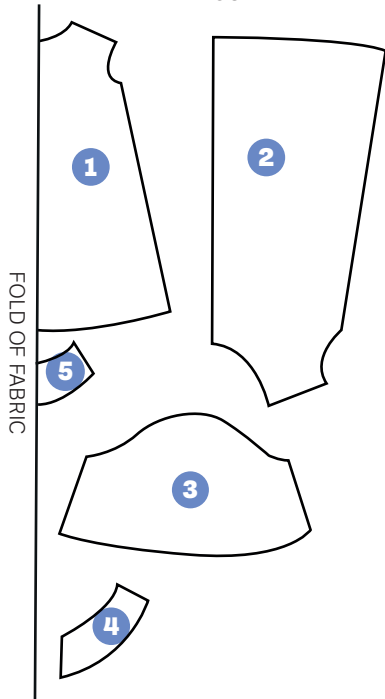
IN YOUR PRINT MENU, UNDER SIZE OPTIONS, BE SURE TO
SELECT '**ACTUAL SIZE/100%**', INSTEAD OF 'FIT TO PAGE'

© ACEVILLE PUBLICATIONS LTD | SEWMAG.CO.UK

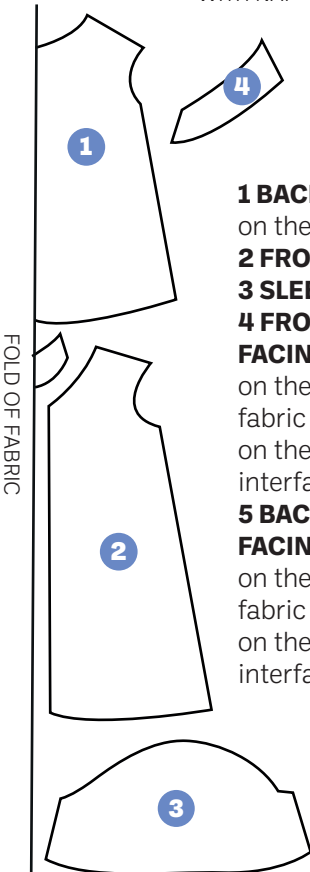
All projects, templates and patterns are for personal home use only and cannot be sold or used for commercial purposes.

CUTTING GUIDE

WITHOUT NAP

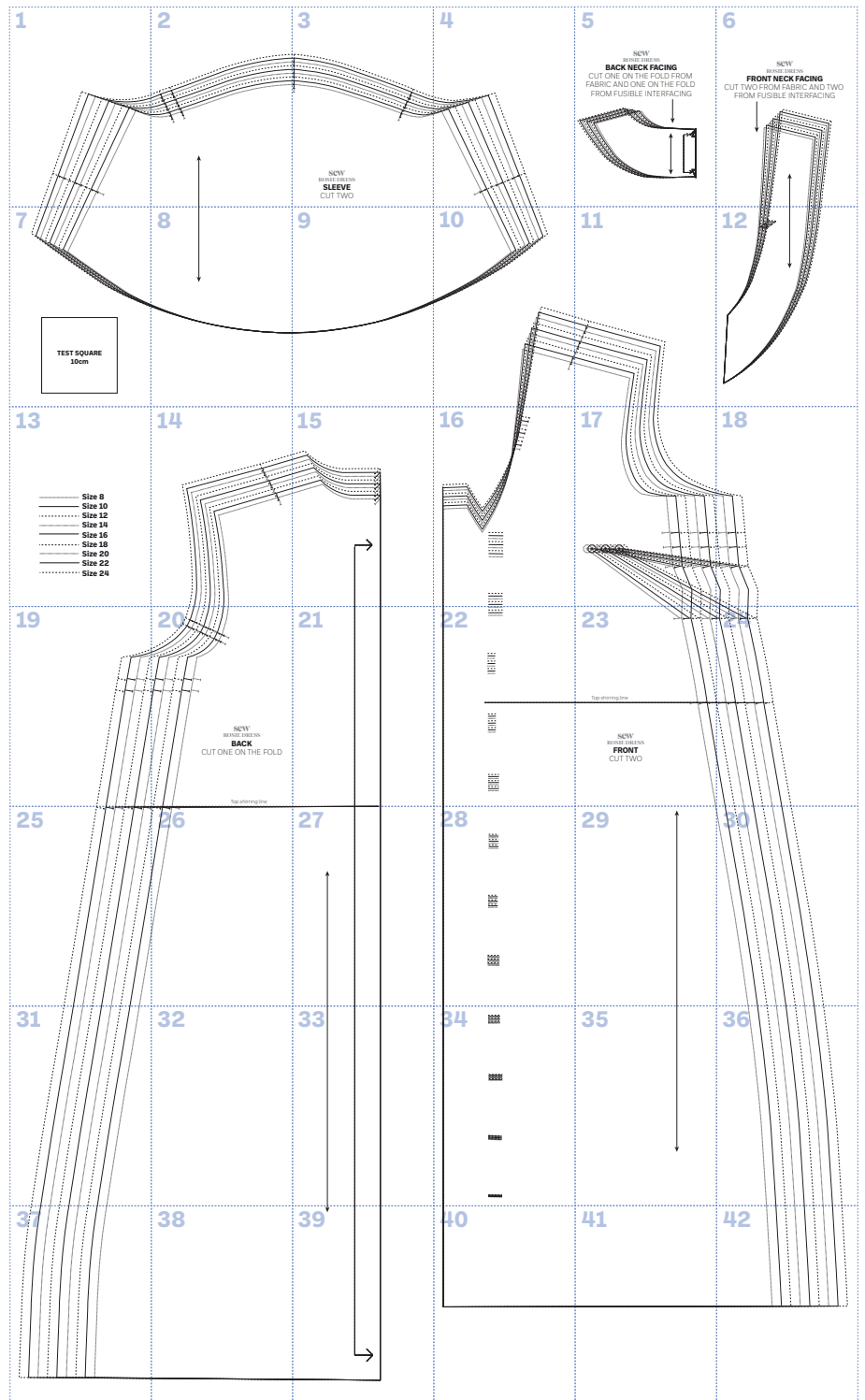


WITH NAP



- 1 BACK** Cut one on the fold
2 FRONT Cut two
3 SLEEVE Cut two
4 FRONT NECK FACING Cut two on the fold from fabric and two on the fold from interfacing
5 BACK NECK FACING Cut one on the fold from fabric and one on the fold from interfacing

PATTERN LAYOUT

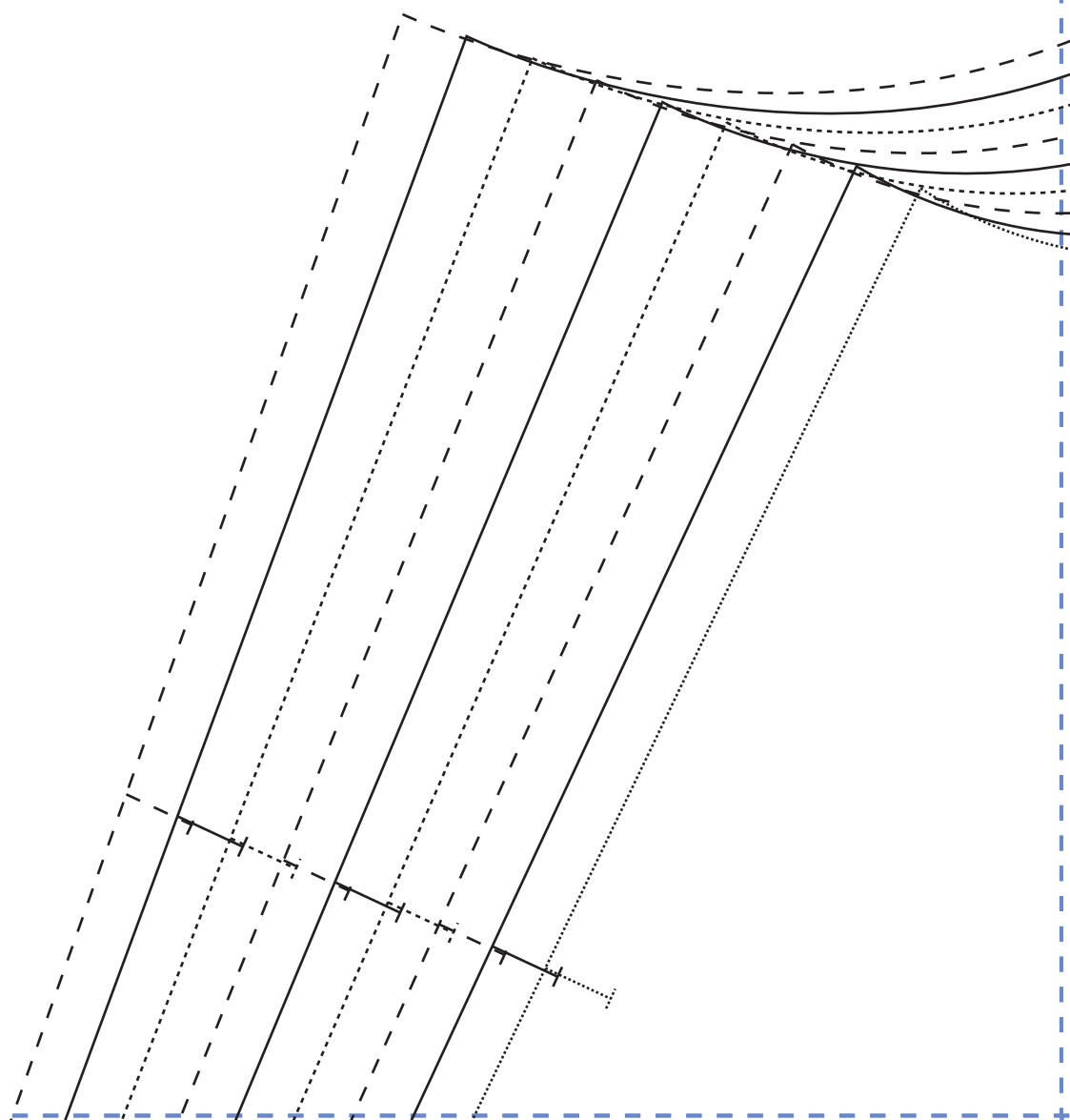


YOUR SIZING CHART

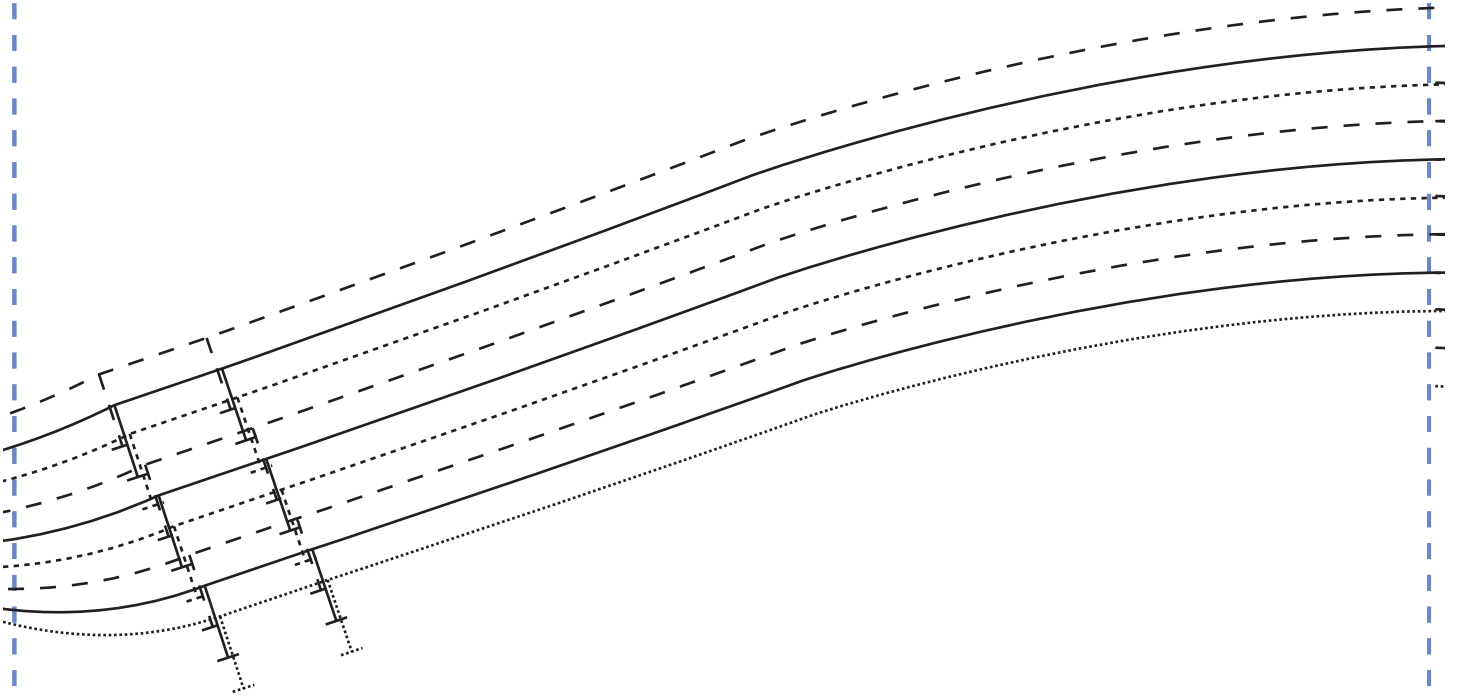
Once you have your body measurements, choose the closest size from the chart below. Remember, there will be variations depending on which fabric and pattern you choose, so always make a toile first.

	8	10	12	14	16	18	20	22	24
Bust cm	78	83	88	93	98	103	108	113	118
Waist cm	59	64	69	74	79	84	89	94	99
Hip cm	85	88	93	98	103	108	113	118	123
Back neck to waist	39	40	41	42	43	44	45	46	47

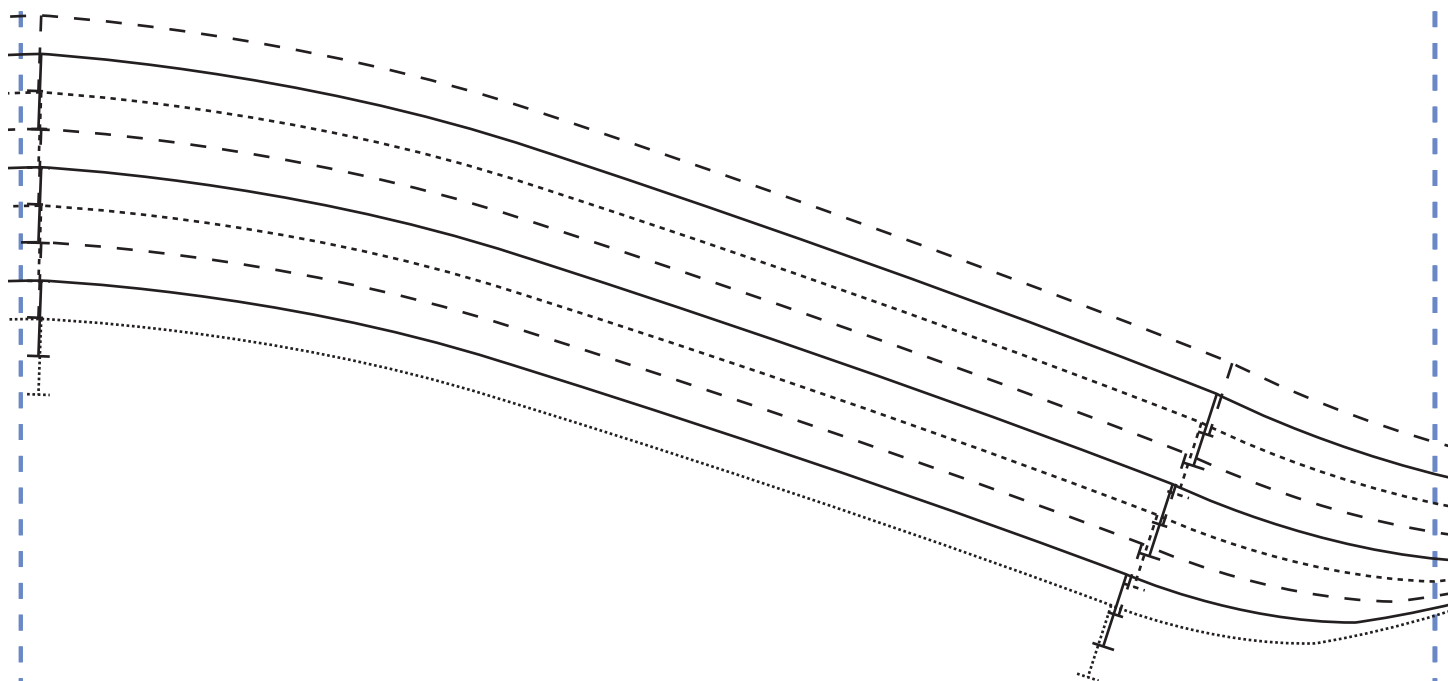
1



2

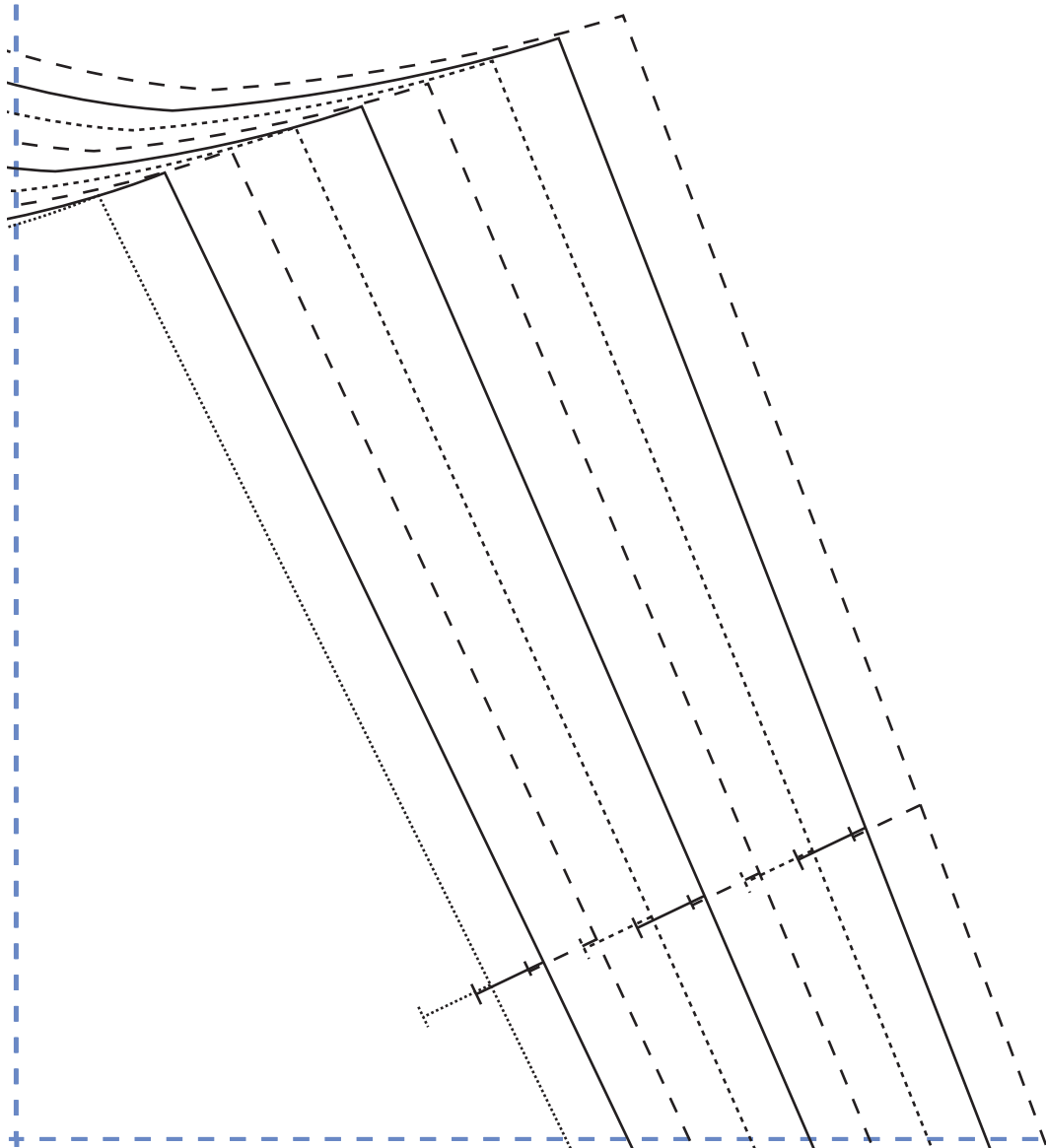


3



sew
ROSIE DRESS
SLEEVE
CUT TWO

4

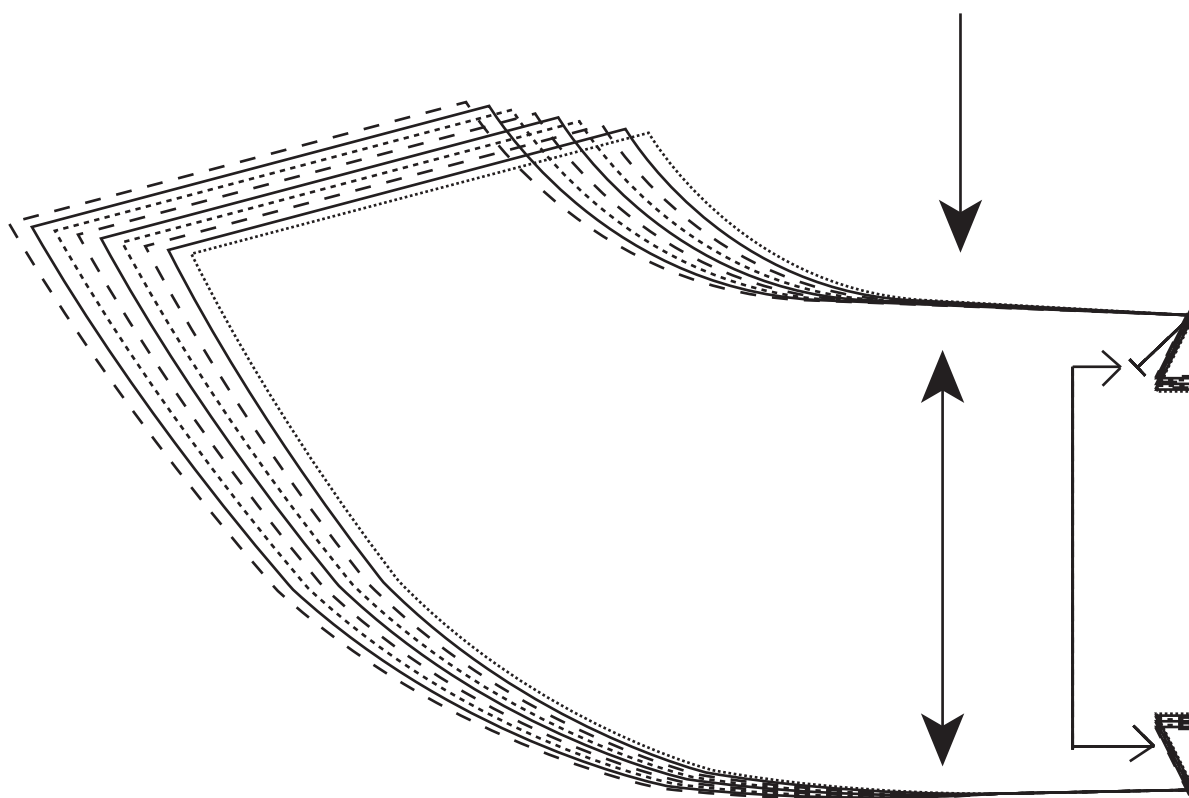


5

sew
ROSIE DRESS

BACK NECK FACING

CUT ONE ON THE FOLD FROM
FABRIC AND ONE ON THE FOLD FROM
FUSIBLE INTERFACING

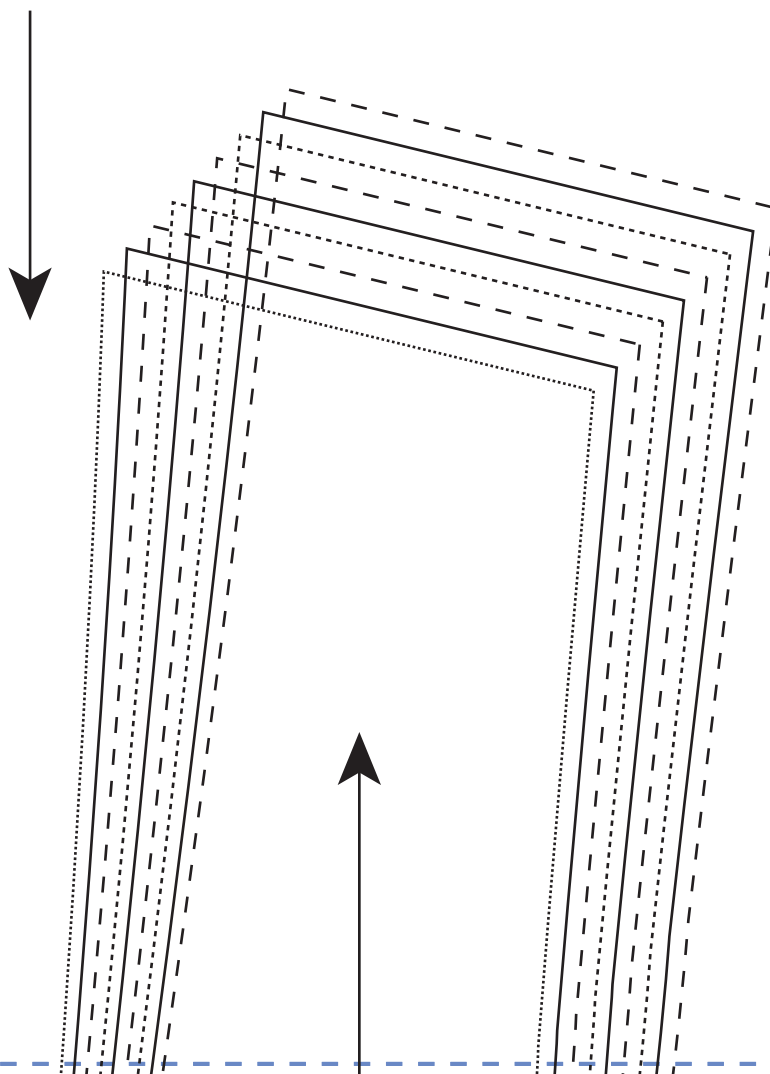


6

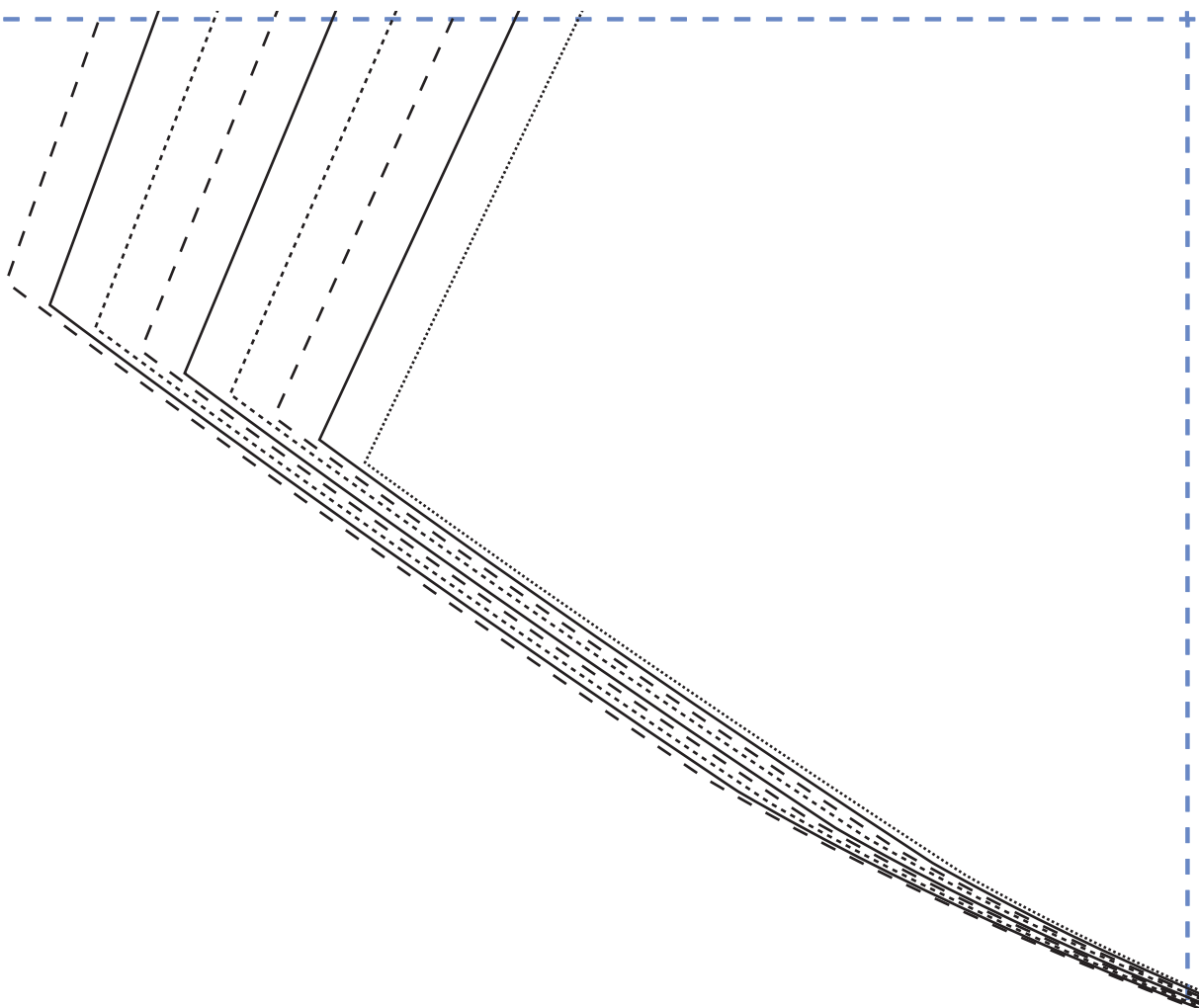
sew
ROSIE DRESS

FRONT NECK FACING

CUT TWO FROM FABRIC AND TWO
FROM FUSIBLE INTERFACING



7



TEST SQUARE
10cm

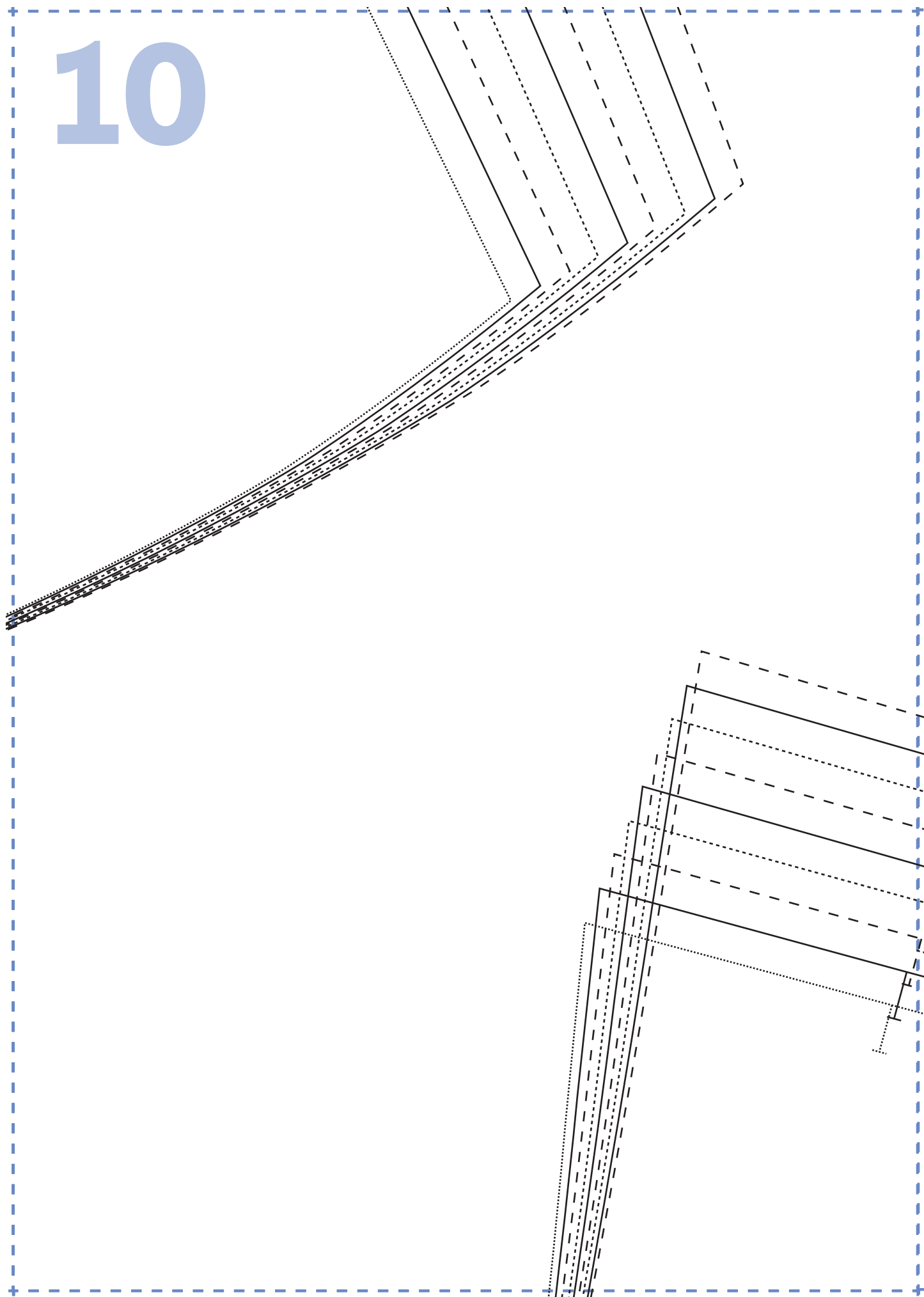
8



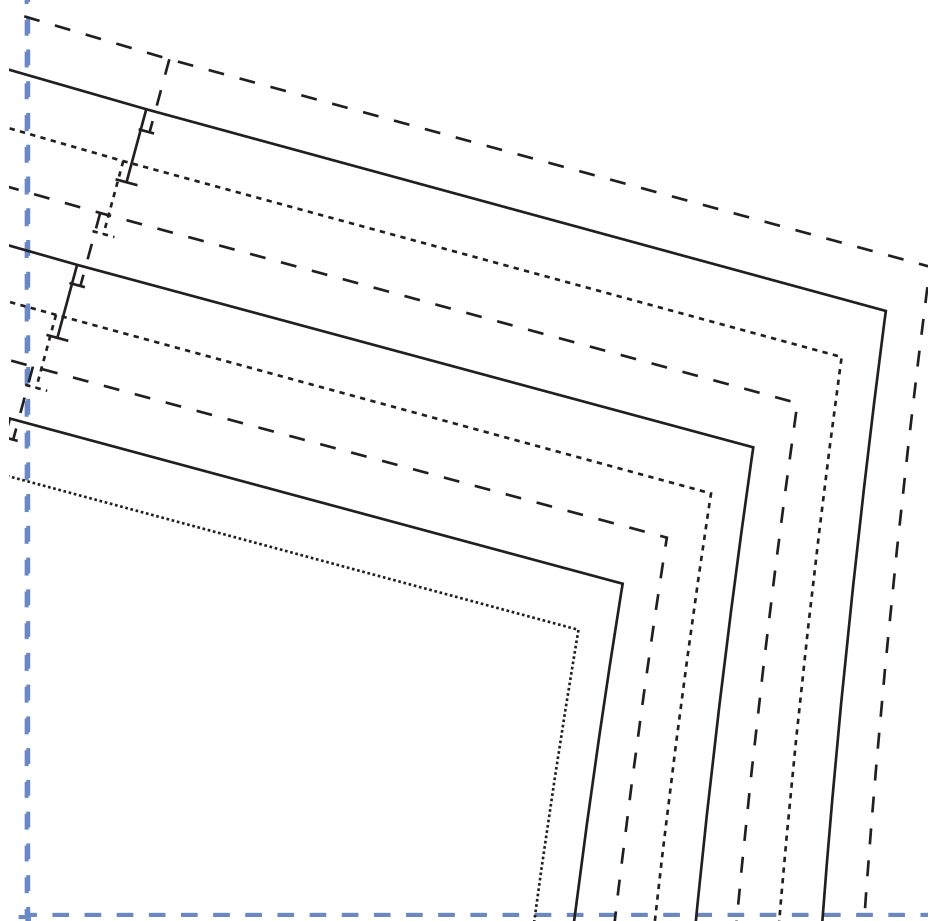
9



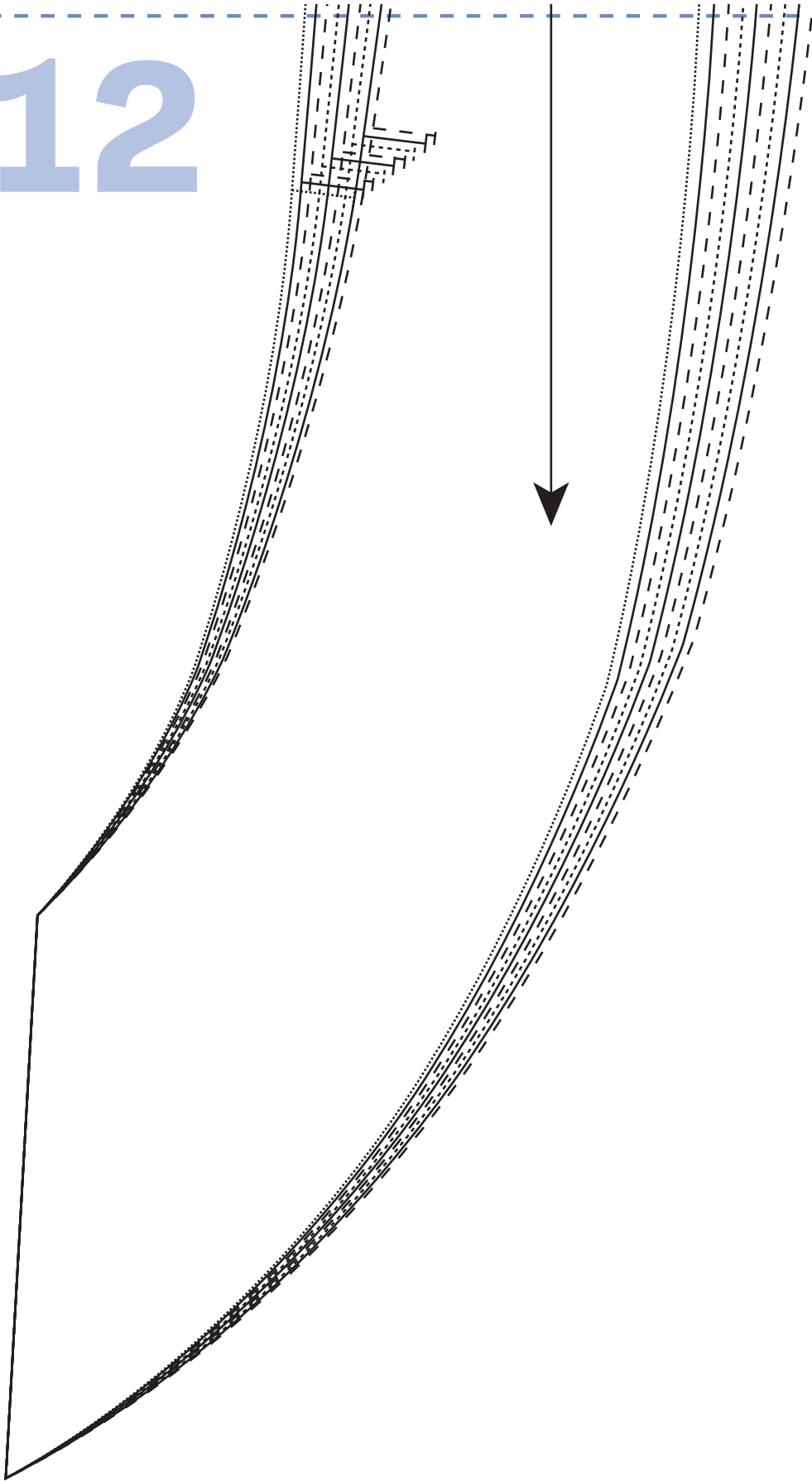
10



11



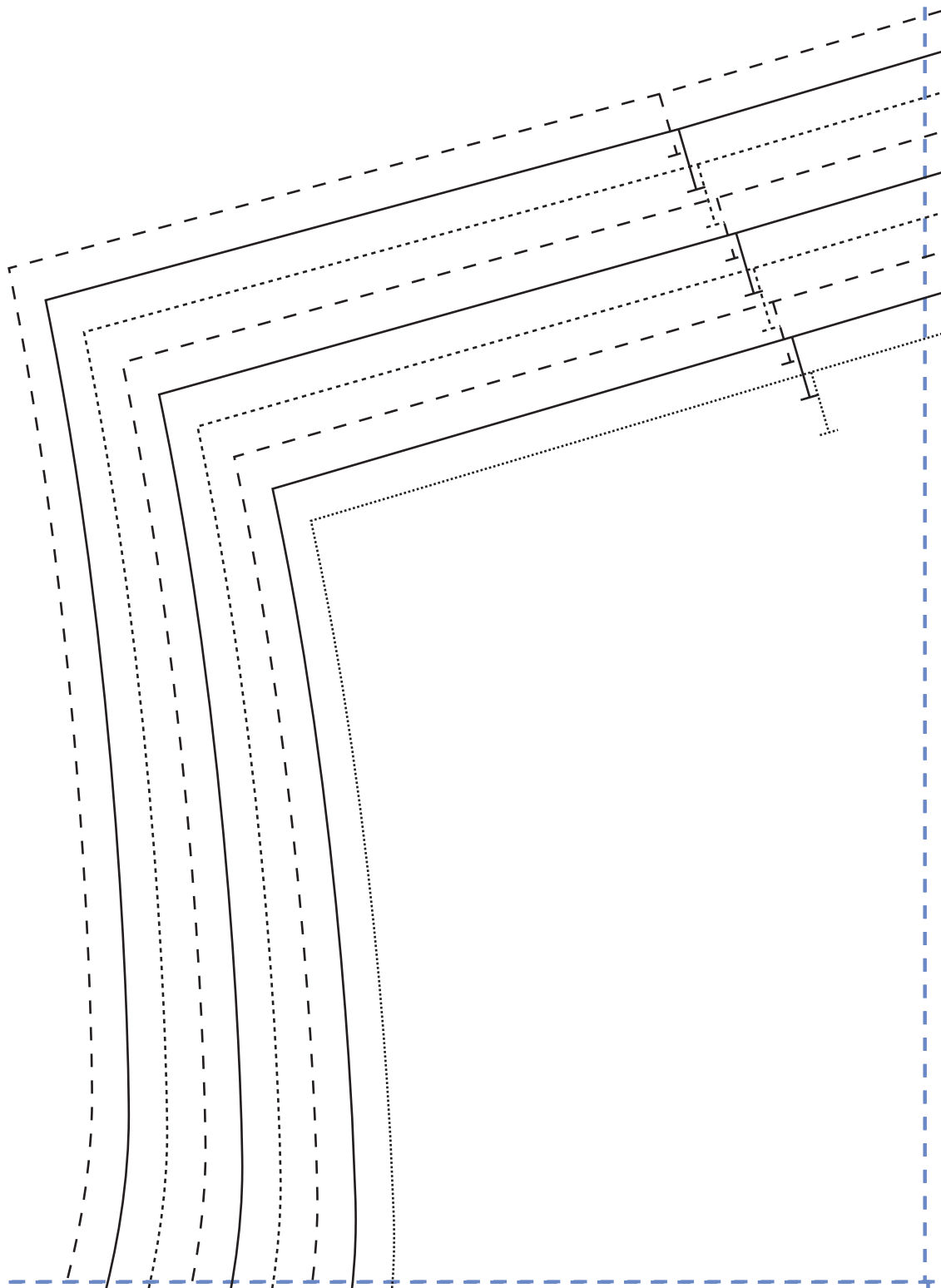
12



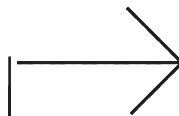
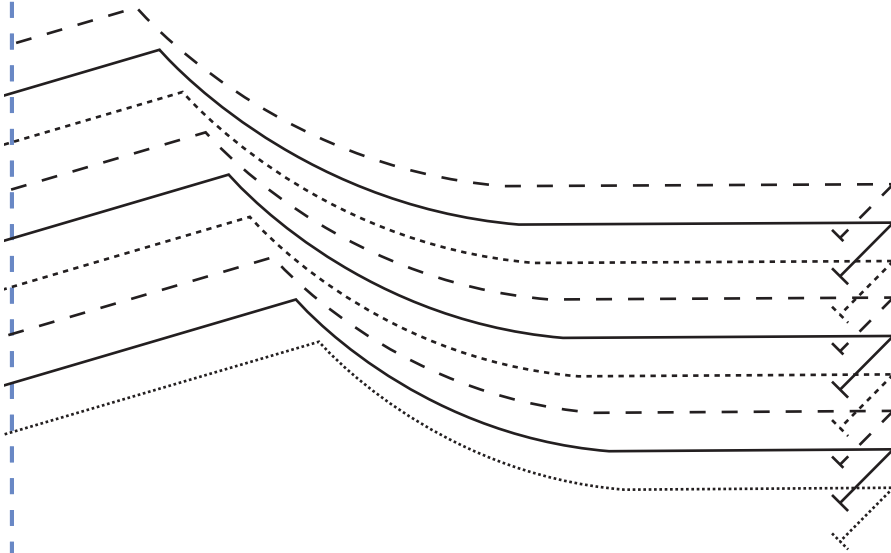
13

- **Size 8**
- _____ **Size 10**
- - - - - **Size 12**
- **Size 14**
- _____ **Size 16**
- - - - - **Size 18**
- **Size 20**
- _____ **Size 22**
- - - - - **Size 24**

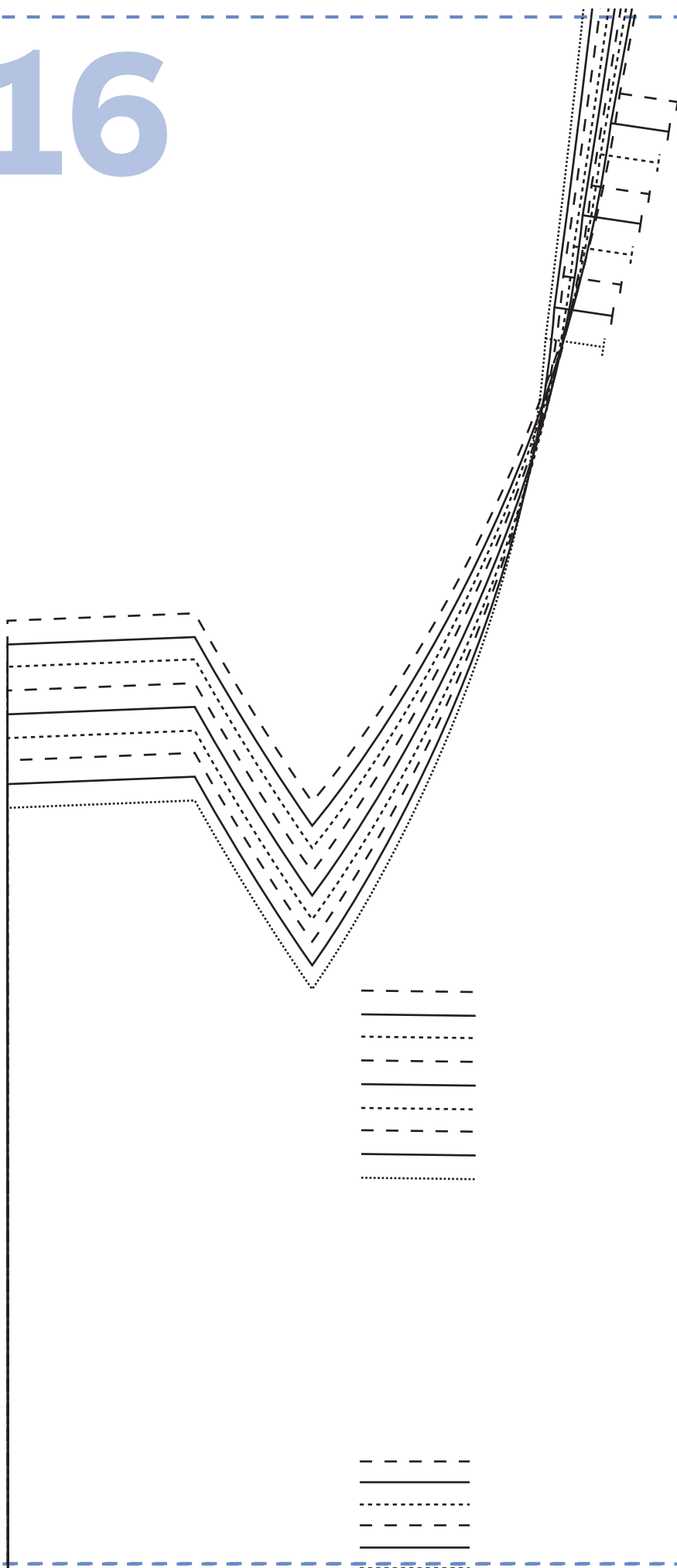
14



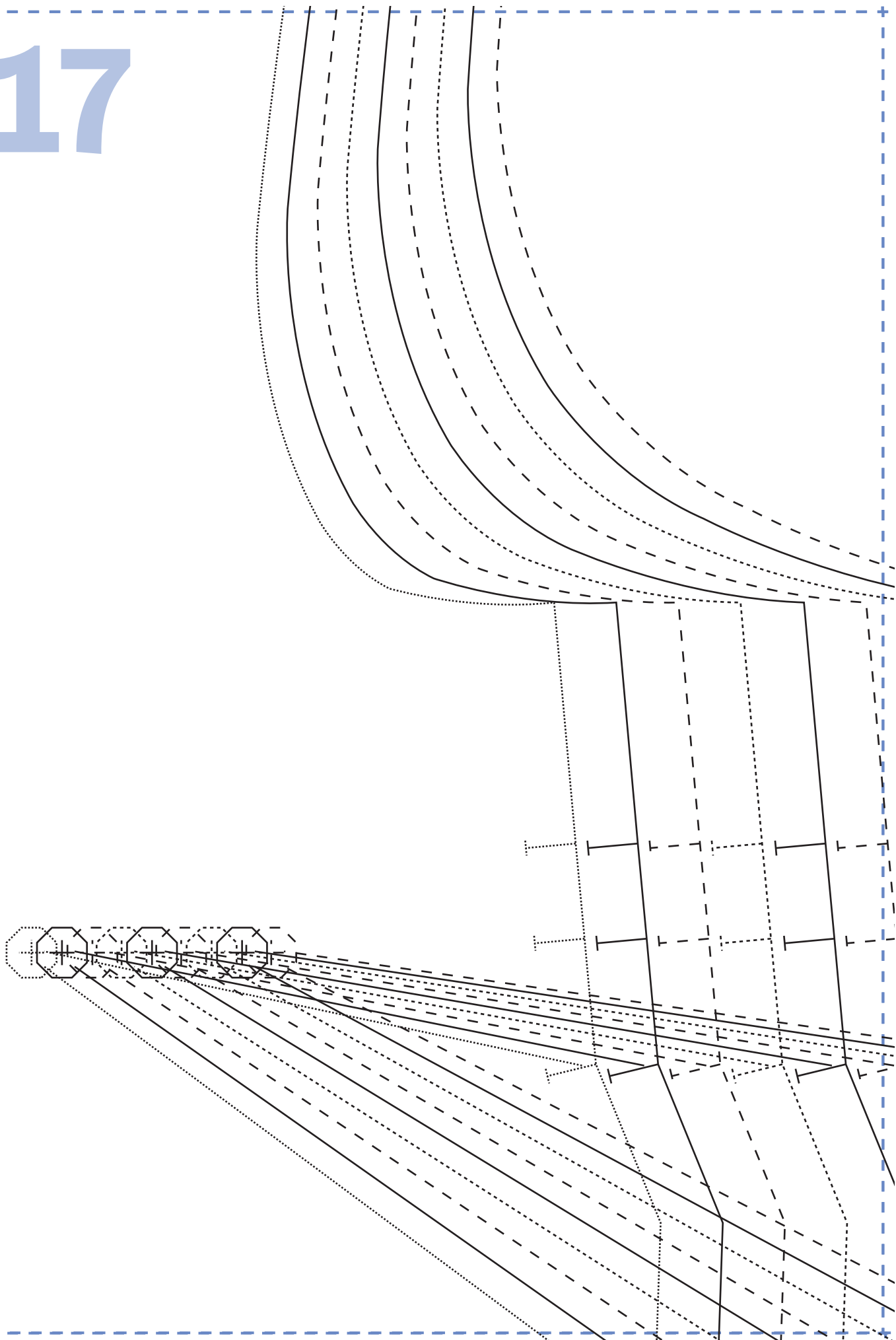
15



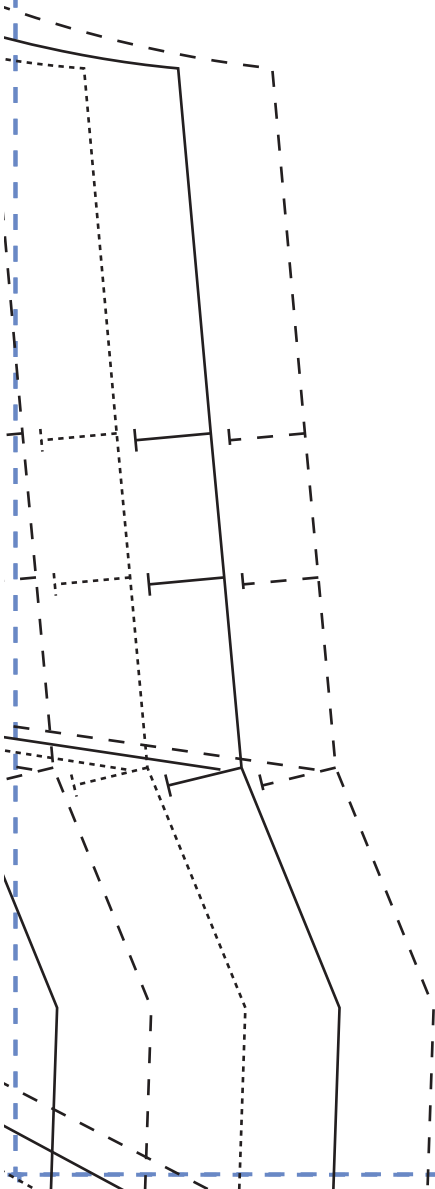
16



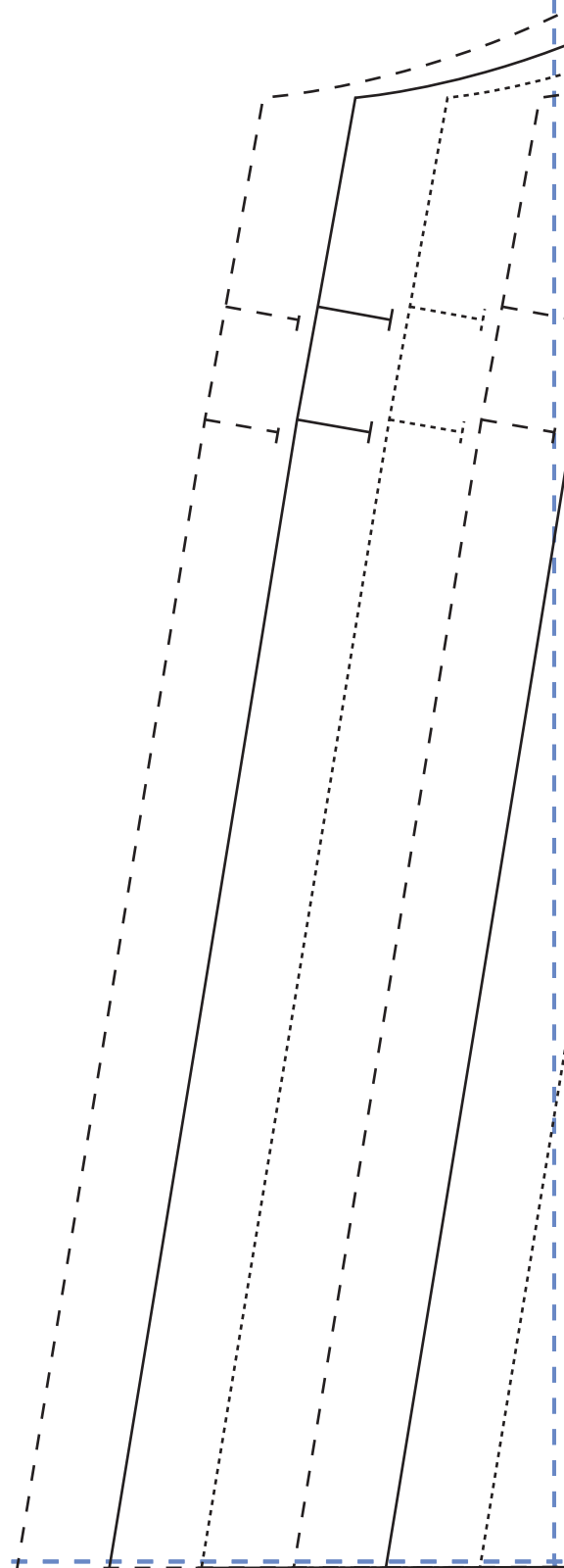
17



18



19



20

sew
ROSIE DRESS

BACK

CUT ONE ON THE FOLD

Top shirring line

21

22

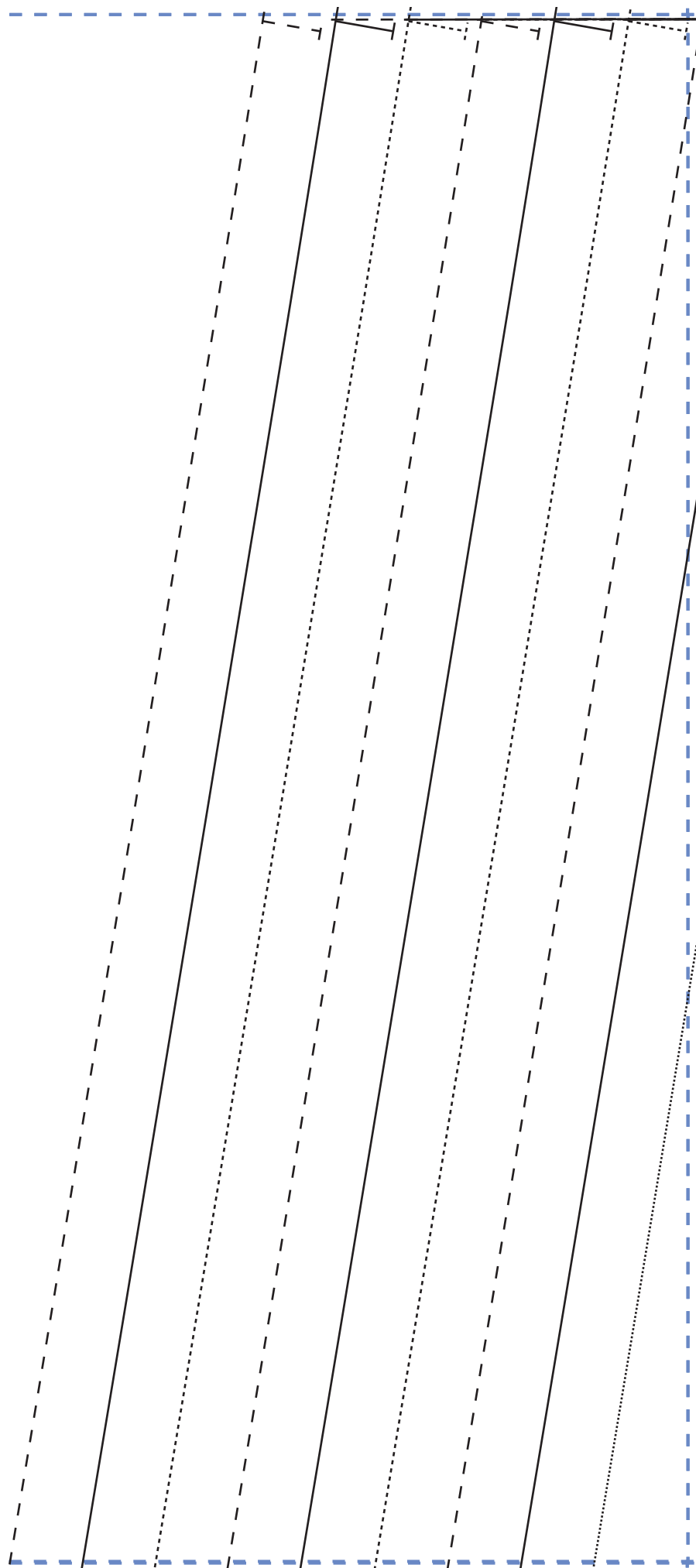
23

Top shirring line

sew
ROSIE DRESS
FRONT
CUT TWO

24

25

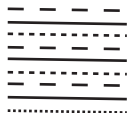
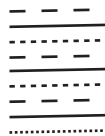
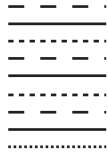


26

27



28

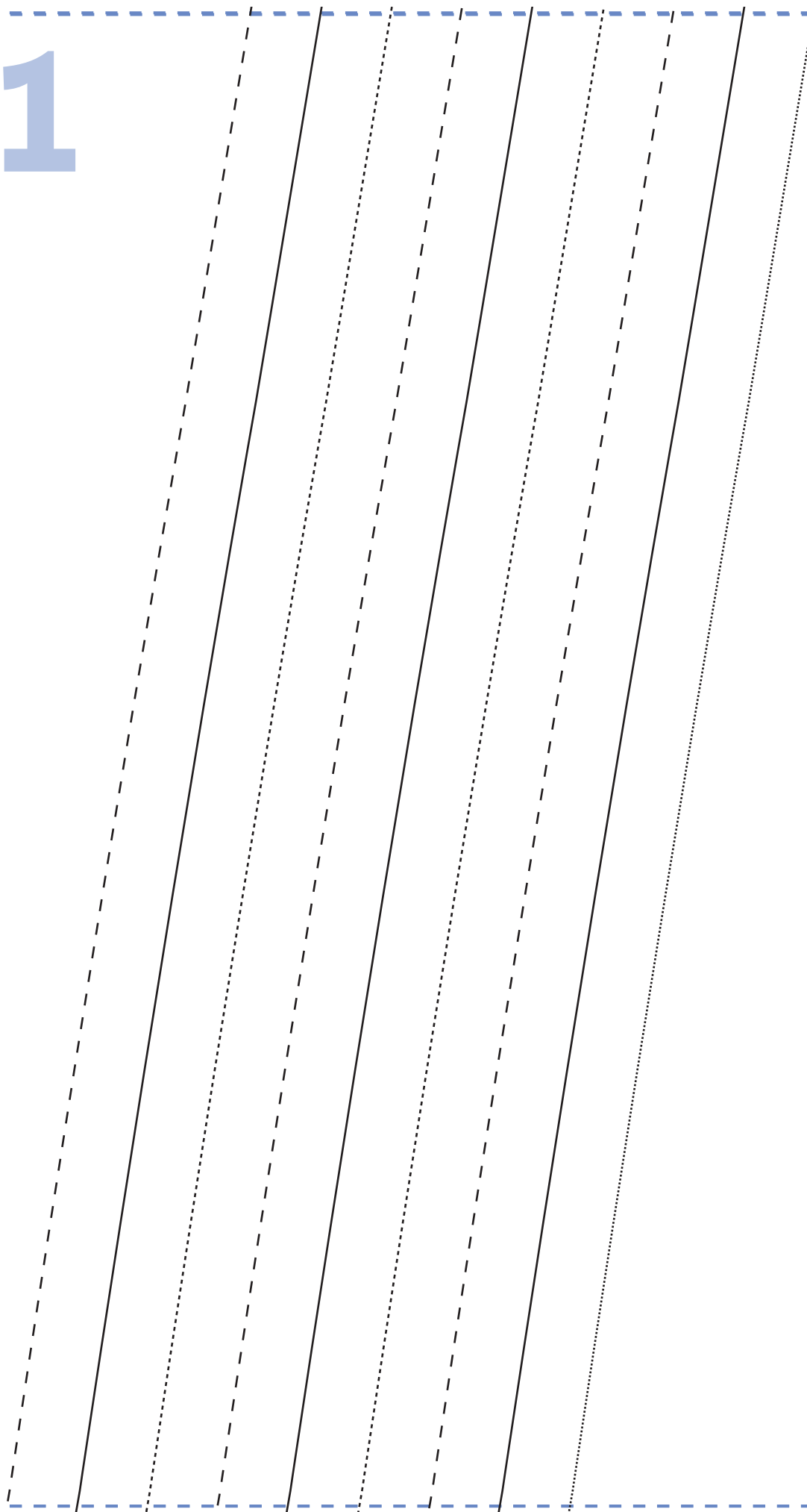


29



30

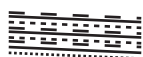
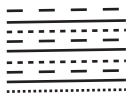
31



32

33

34



35

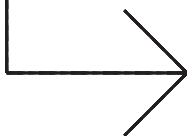


36

37

38

39



40

41

42