

sew

Issue 114 September 2018

PRINT
OUT
& KEEP

TINA TOP PATTERN

Use these guides to get started today

IN YOUR PRINT MENU, UNDER SIZE OPTIONS, BE SURE TO
SELECT TO PRINT 'ACTUAL SIZE', INSTEAD OF 'FIT TO PAGE'

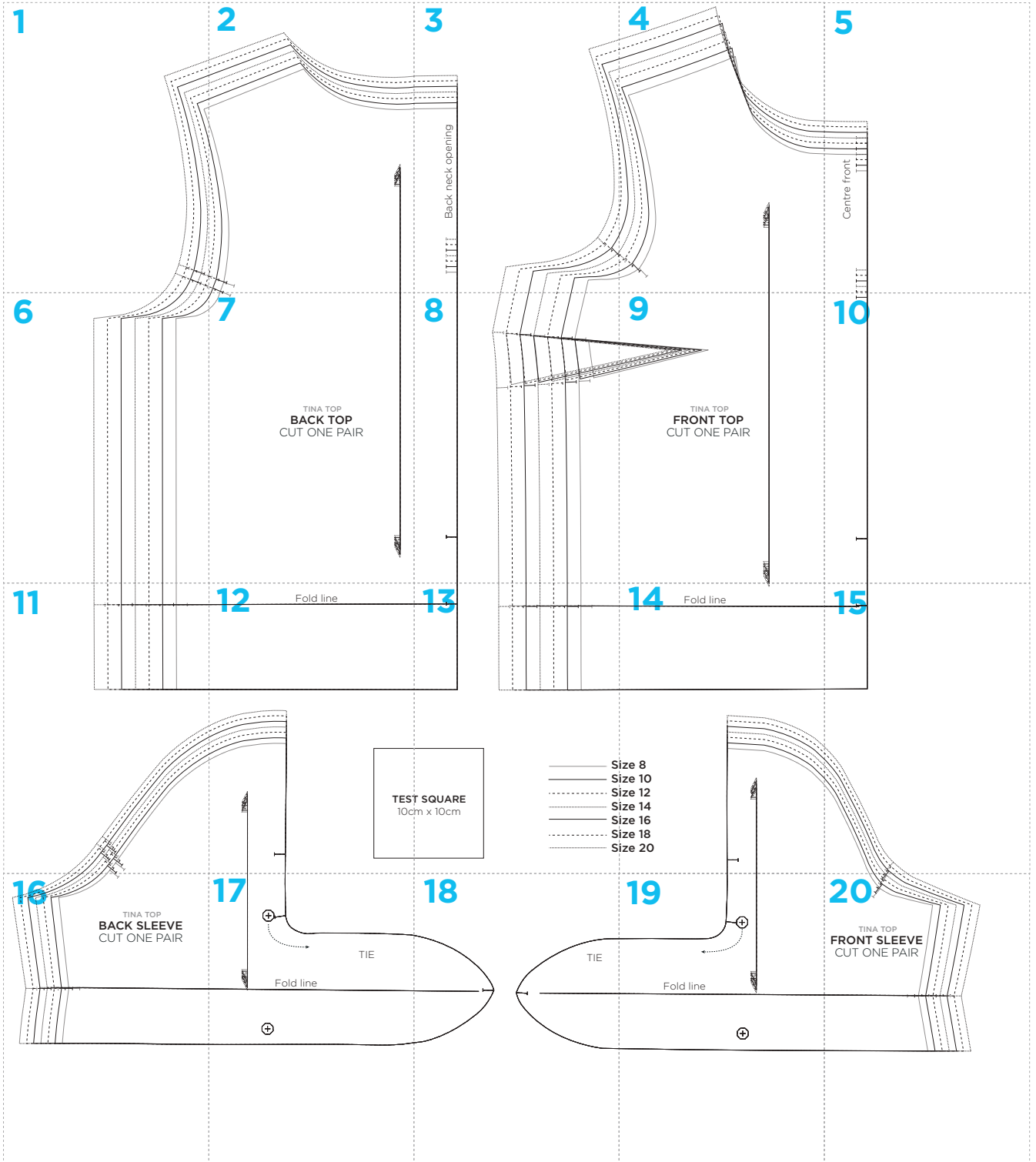
Title: Tina top
Designer: Amanda Walker
Magazine page: 28



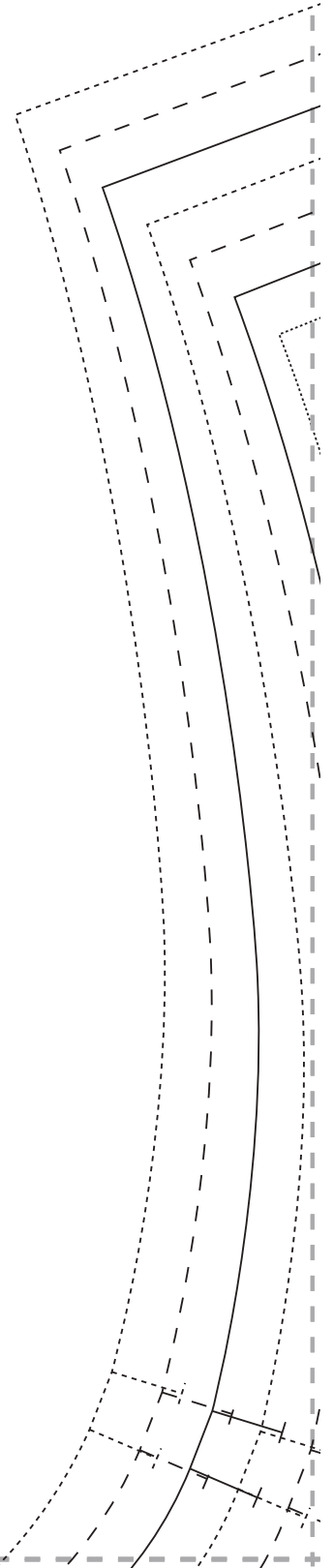
© ACEVILLE PUBLICATIONS LTD | SEWMAG.CO.UK

All projects, templates and patterns are for personal home use only and cannot be sold or used for commercial purposes.

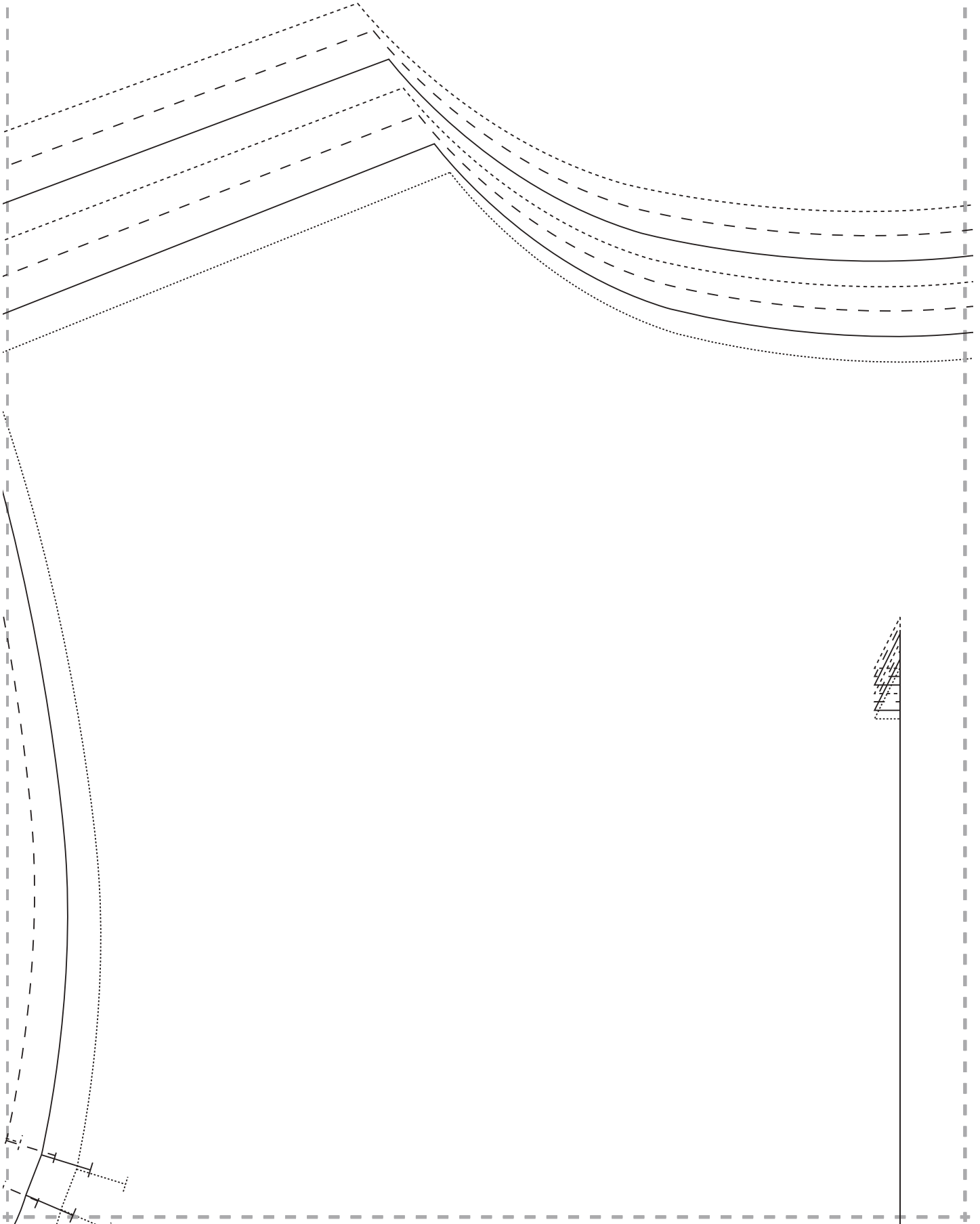
TINA TOP PATTERN LAYOUT



1

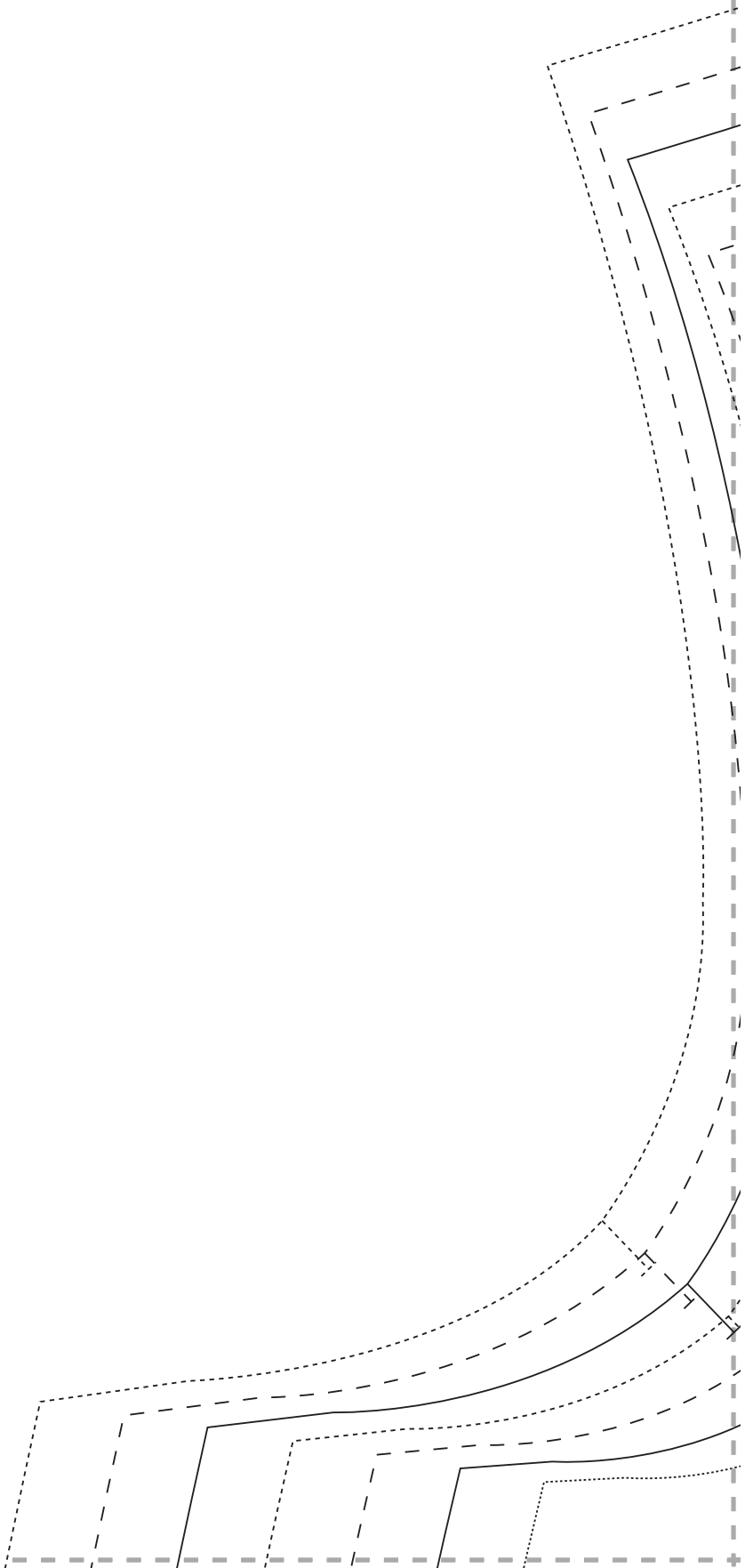


2

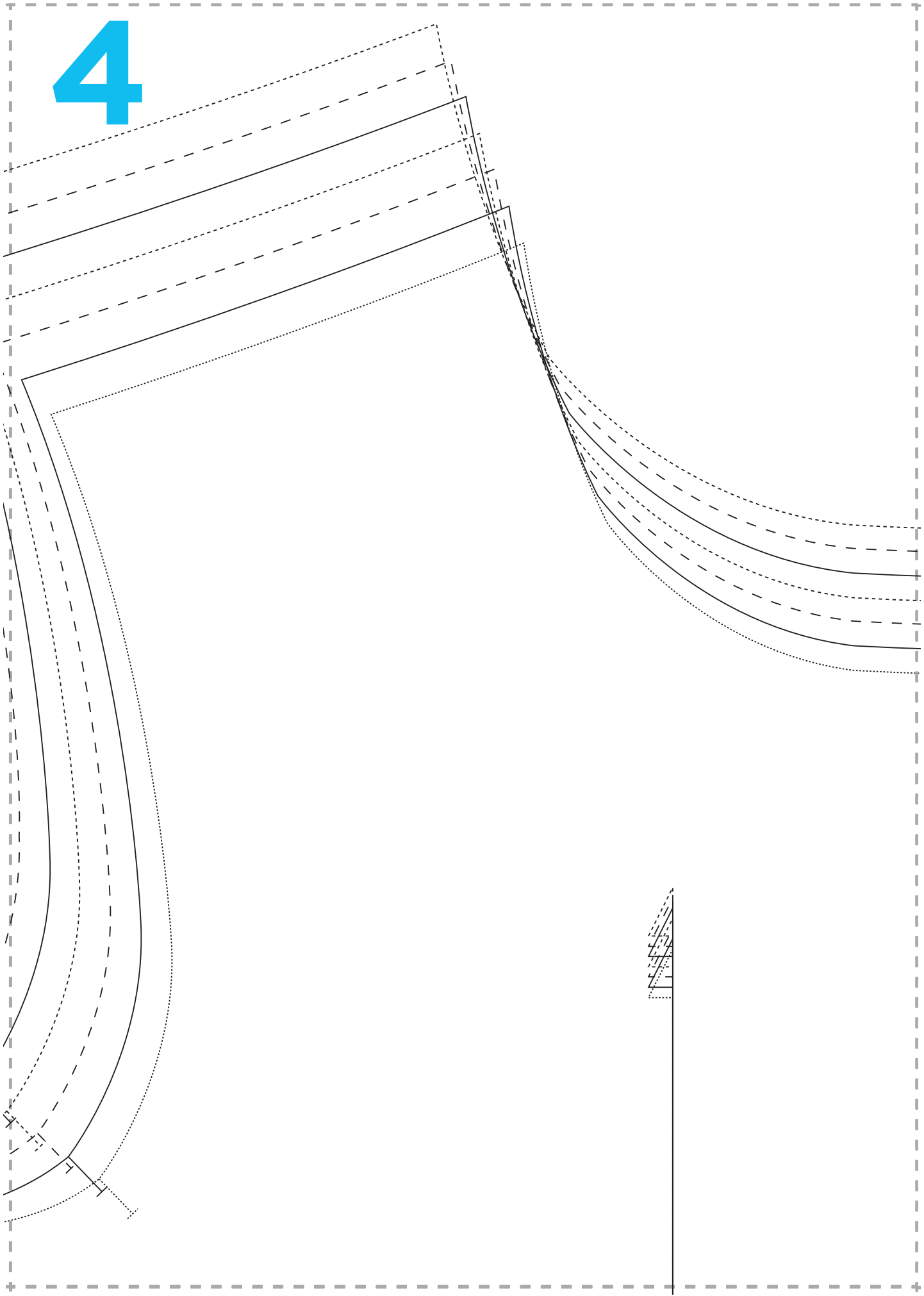


3

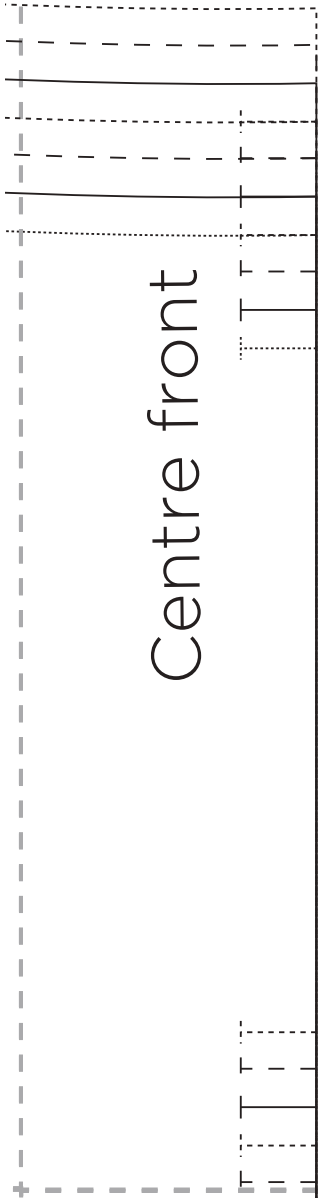
Back neck opening



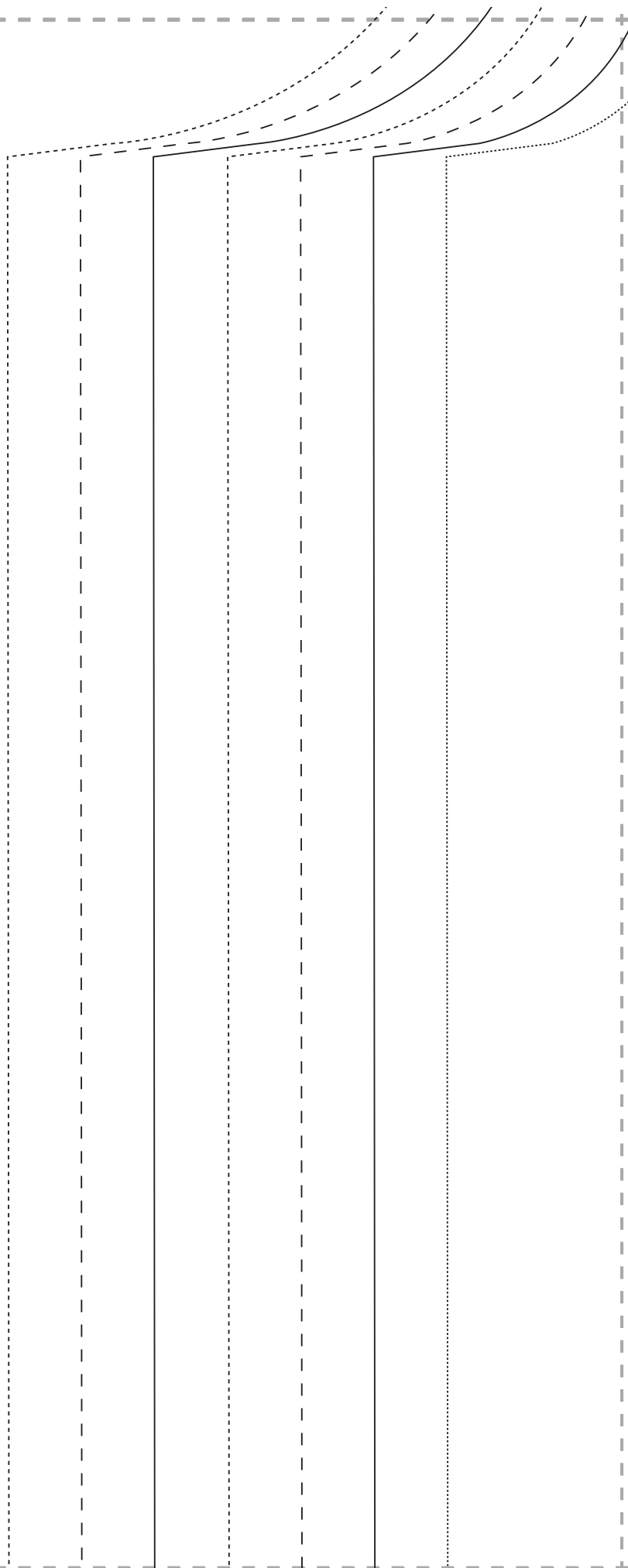
4



5



6



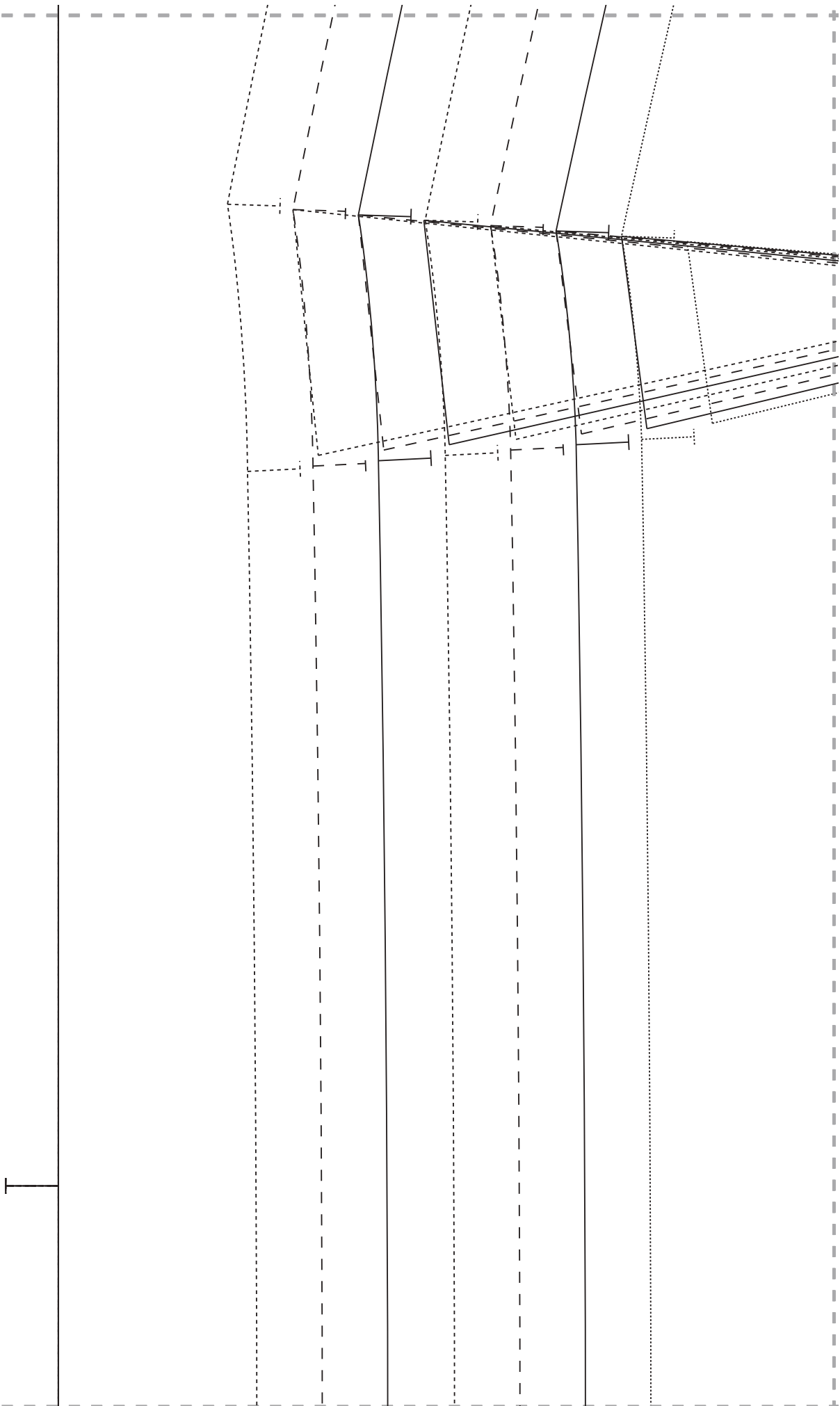


7

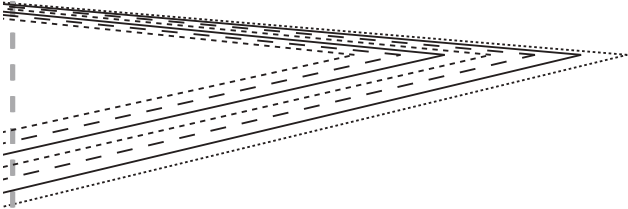
TINA TOP
BACK TOP
CUT ONE PAIR



8



9

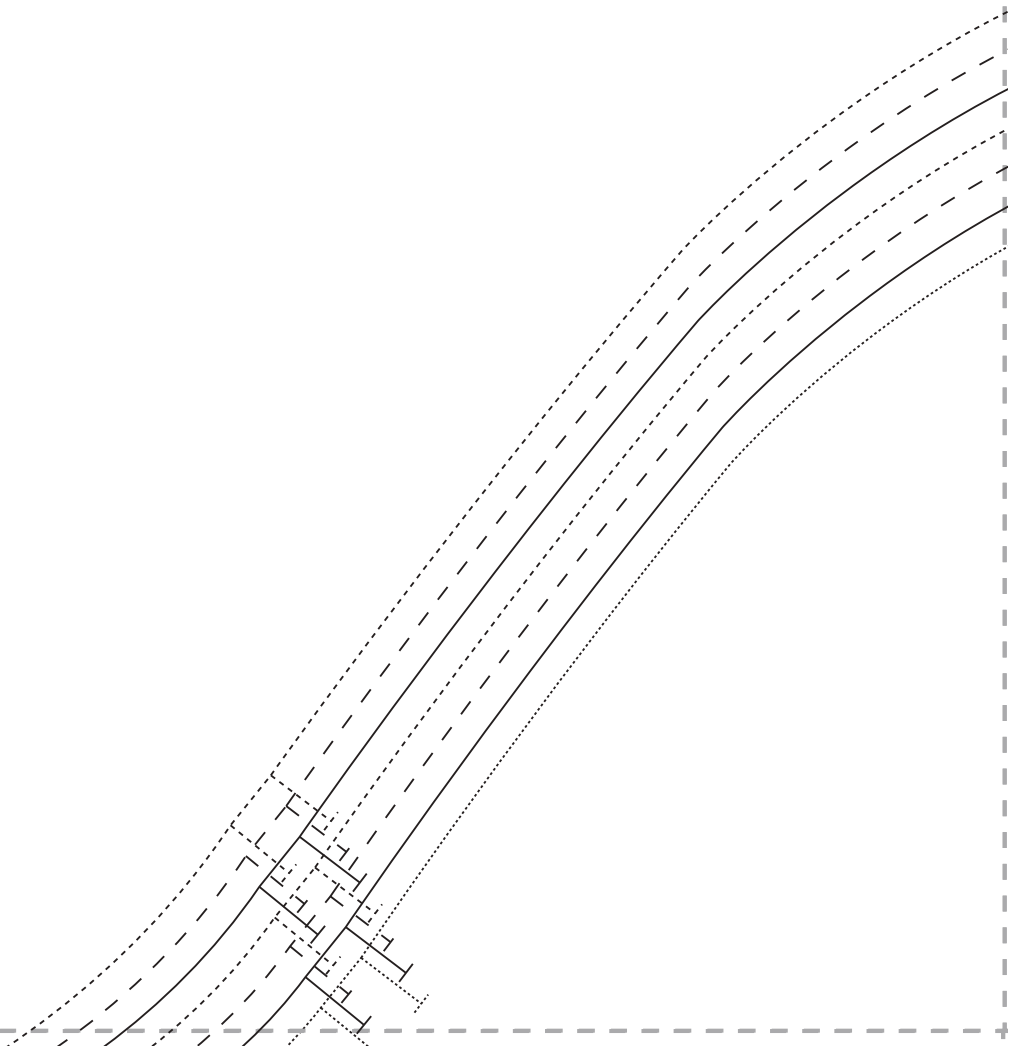
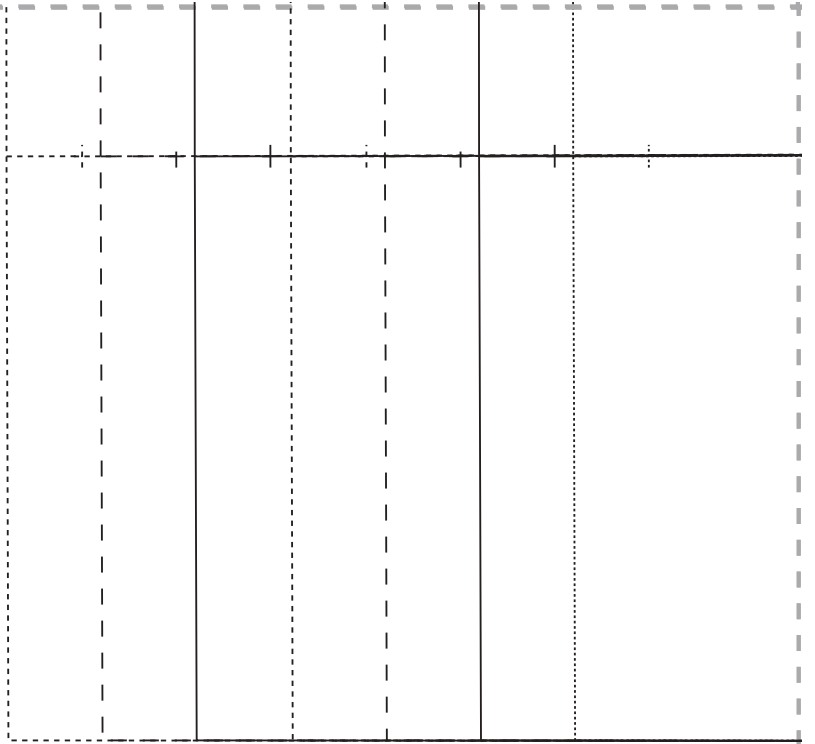


TINA TOP
FRONT TOP
CUT ONE PAIR



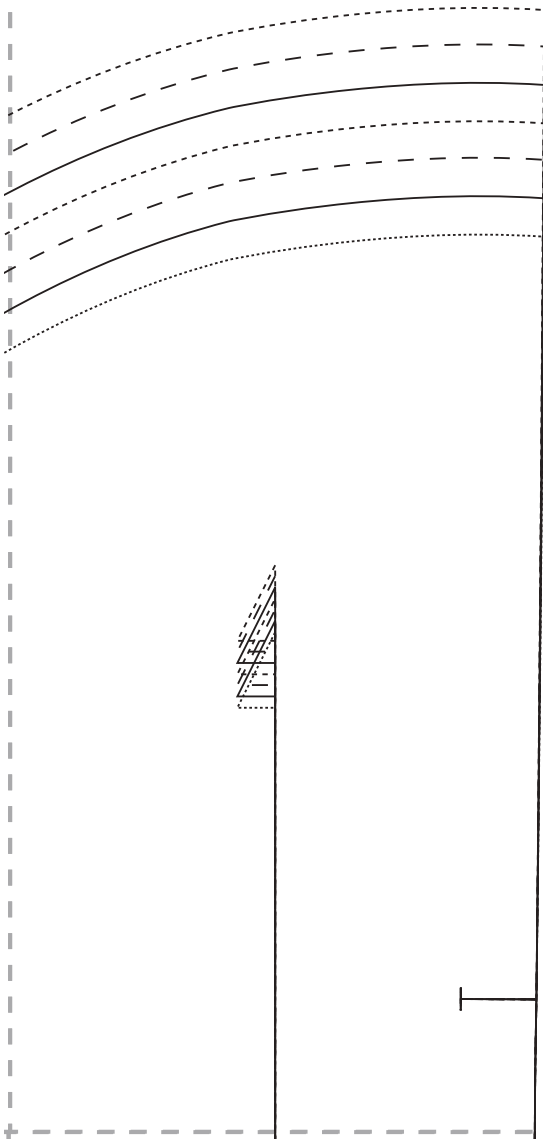
10

11



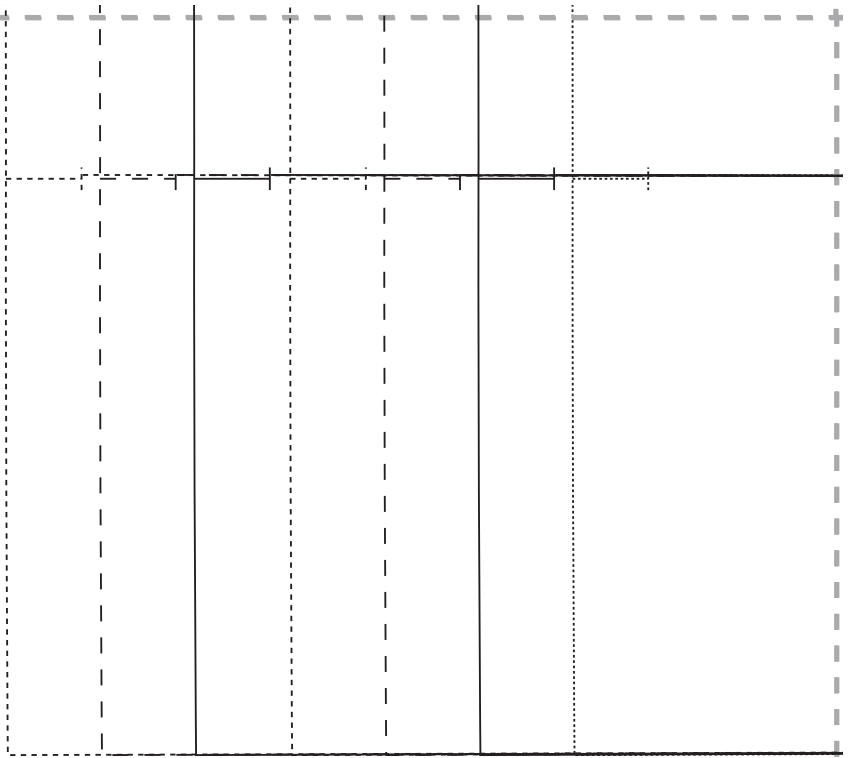
12

Fold line

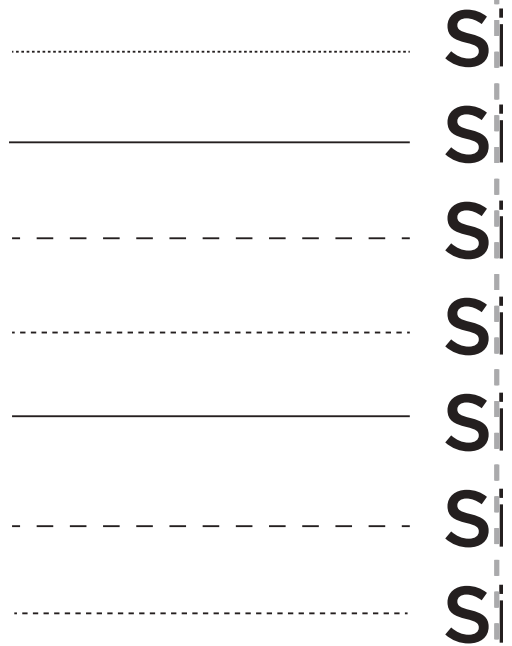


TEST
10cr

13



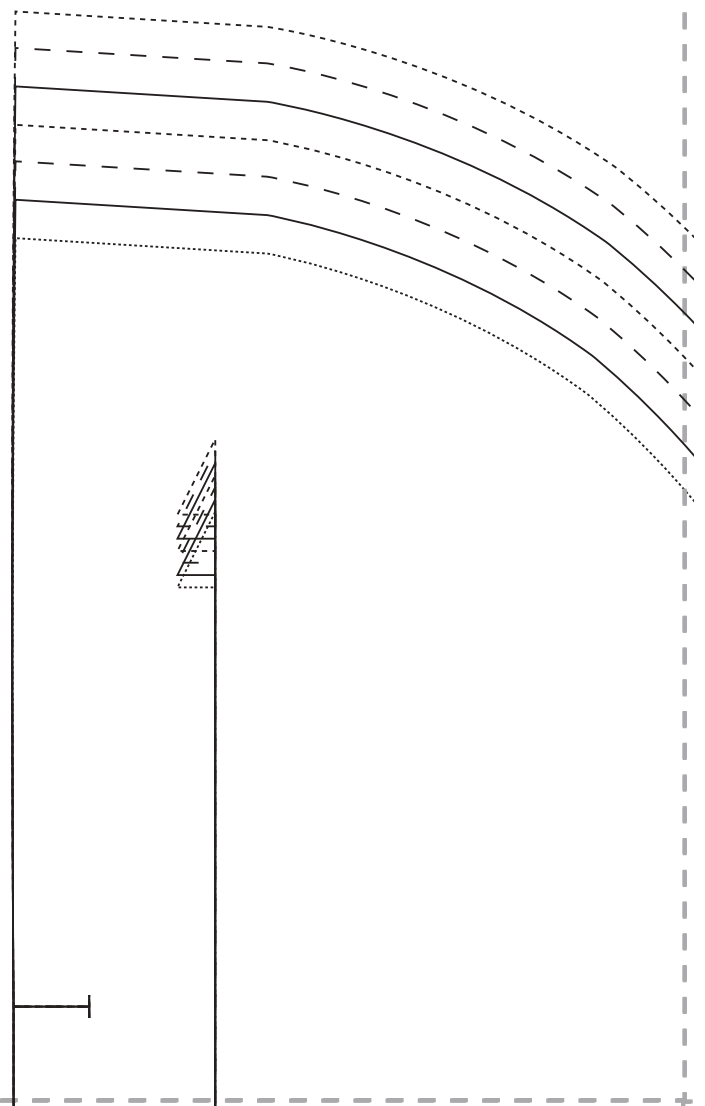
T SQUARE
15cm x 10cm



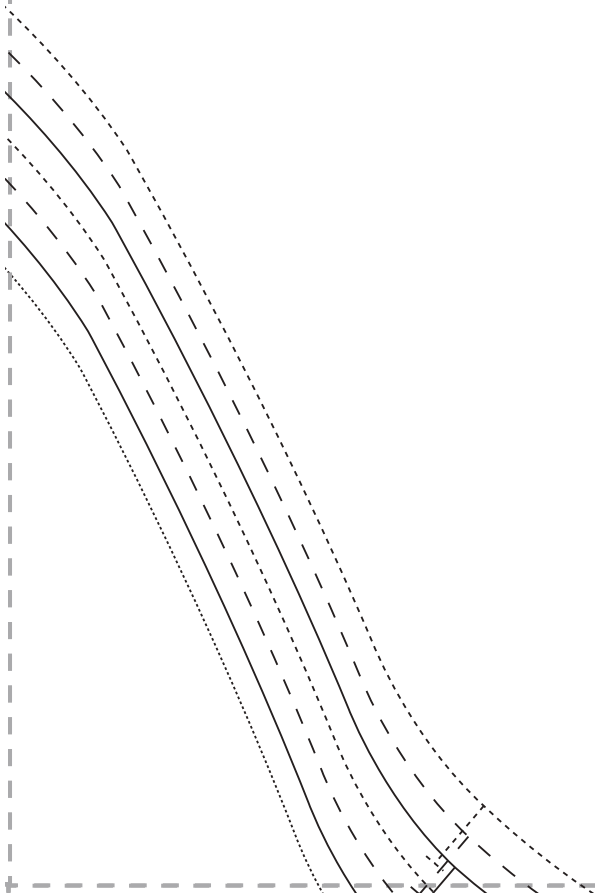
14

Fold line

- size 8
- size 10
- size 12
- size 14
- size 16
- size 18
- size 20



15

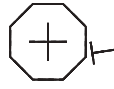


16

TINA TOP
BACK SLEEVE
CUT ONE PAIR



17

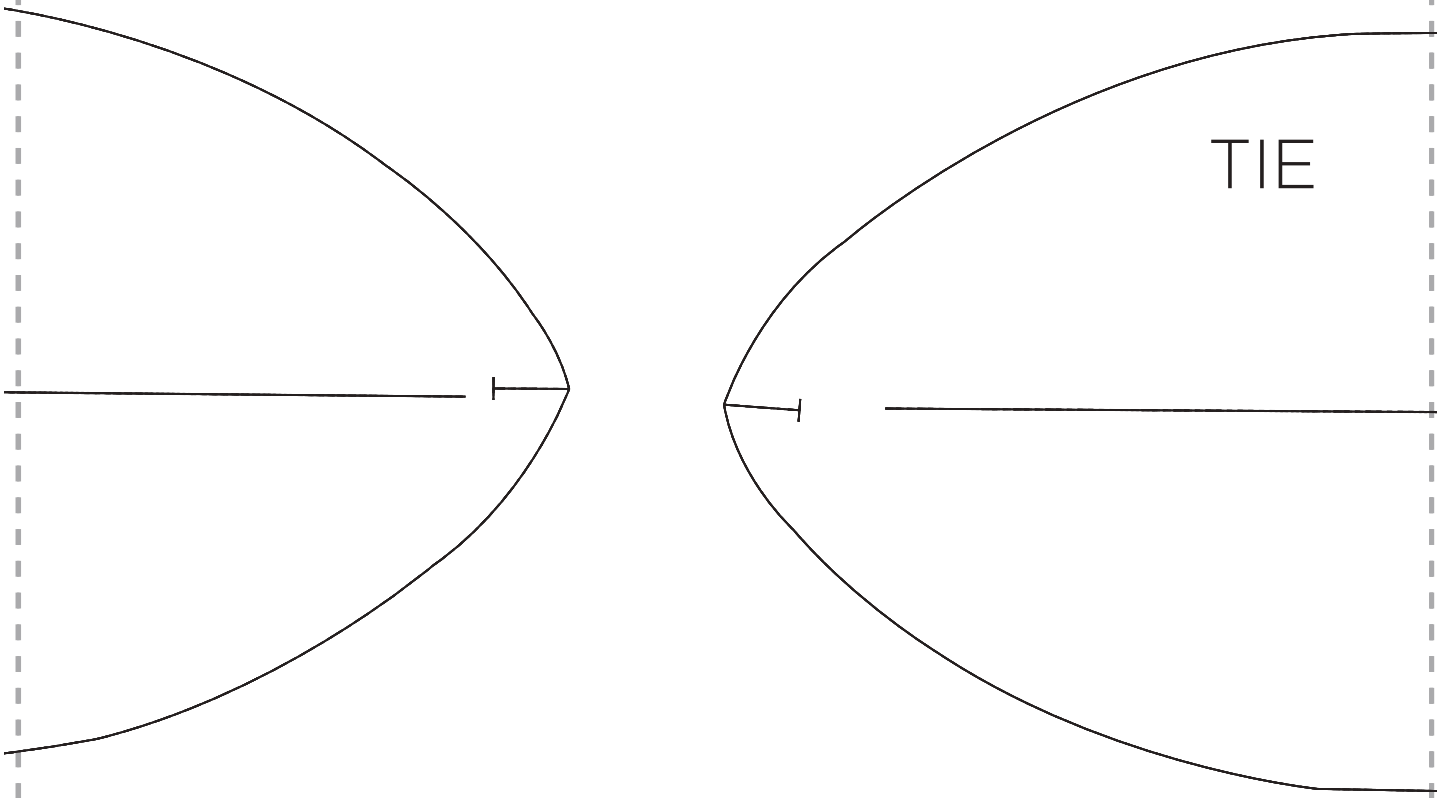


Fold line

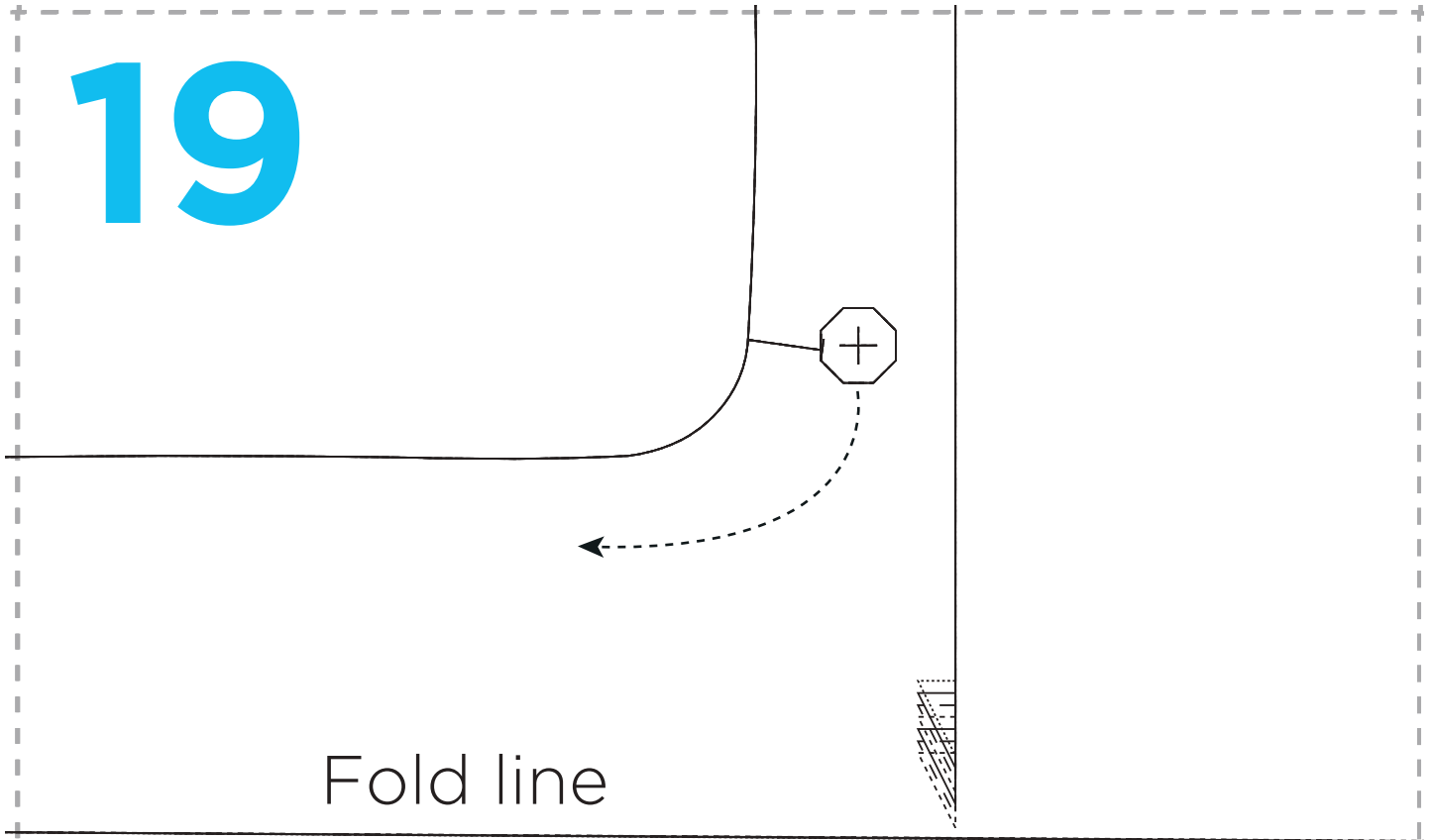
TIE



18



19



Fold line



20

TINA TOP
FRONT SLEEVE
CUT ONE PAIR

